

Weekly SLA Customer Report

Customer AUJ_Production
Database ID 41



=====
HARDDISK USAGE AUJDB_BI
=====

	Used disk space on / (GB)	Total disk space on / (GB)
25-10-2014	5	6
24-10-2014	5	6
23-10-2014	5	6
22-10-2014	5	6
21-10-2014	5	6
20-10-2014	5	6
19-10-2014	5	6

=====
HARDDISK USAGE AUJ_PRD_ORACLE1
=====

	Used disk space on \$1 (GB)	Total disk space on \$1 (GB)	Free disk space on \$1 (GB)
25-10-2014	119	290	67
24-10-2014	119	290	67
23-10-2014	119	290	67
22-10-2014	119	290	67
21-10-2014	119	290	67
20-10-2014	119	290	67
19-10-2014	118	290	67

Weekly SLA Customer Report

Customer AUJ_Production
Database ID 41



HARDDISK USAGE AUJ_PRD_ORACLE2

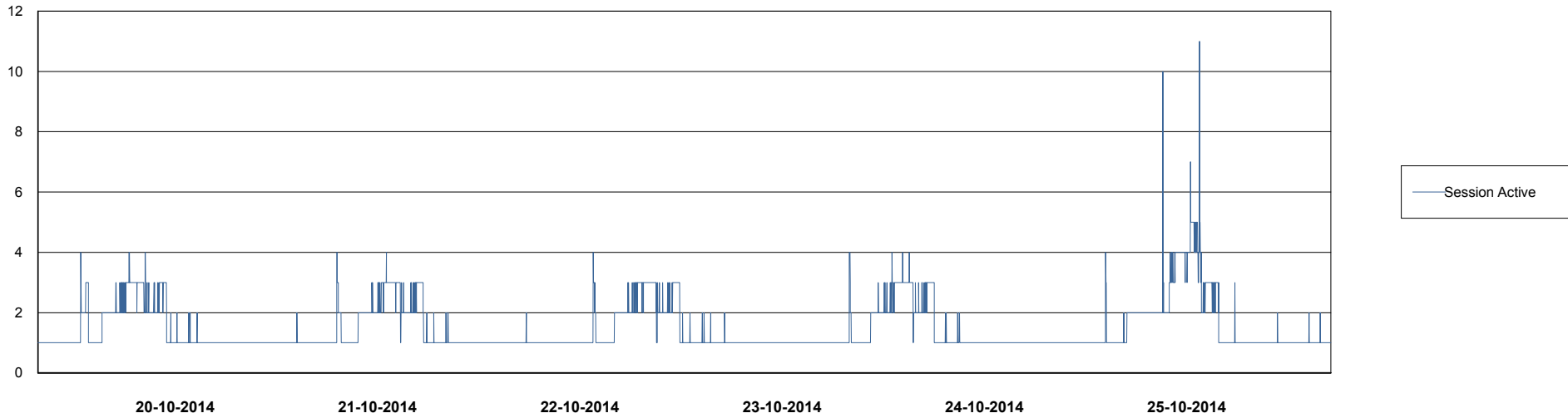
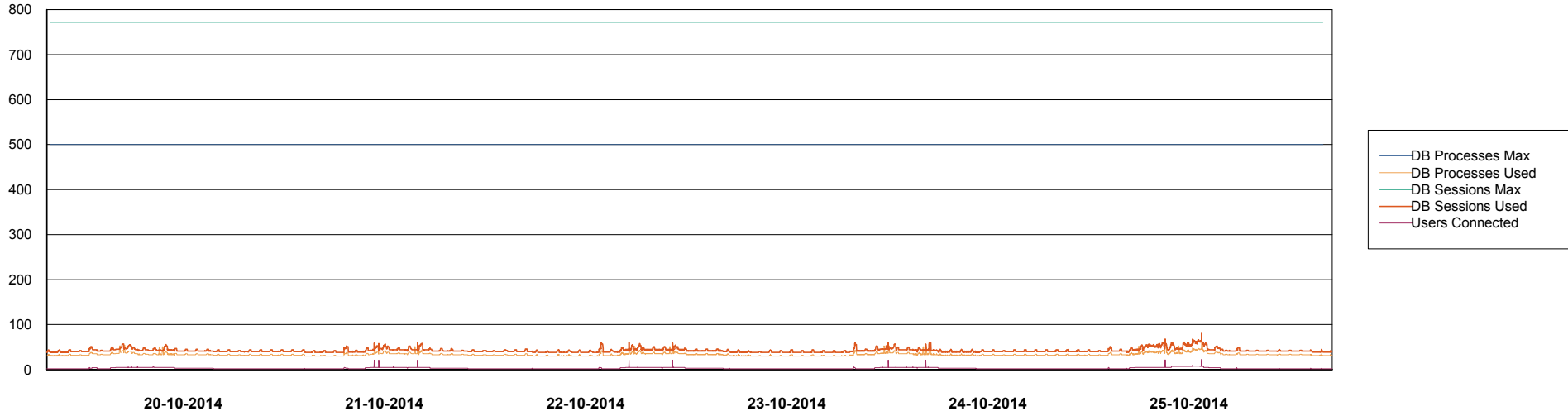
	Used disk space on \$1 (GB)	Total disk space on \$1 (GB)	Free disk space on \$1 (GB)
25-10-2014	6	109	98
24-10-2014	6	109	98
23-10-2014	6	109	98
22-10-2014	6	109	98
21-10-2014	6	109	98
20-10-2014	6	109	98
19-10-2014	6	109	98

Weekly SLA Customer Report

Customer AUJ_Production
Database ID 41



DATABASE PERFORMANCE AUJDB_BI

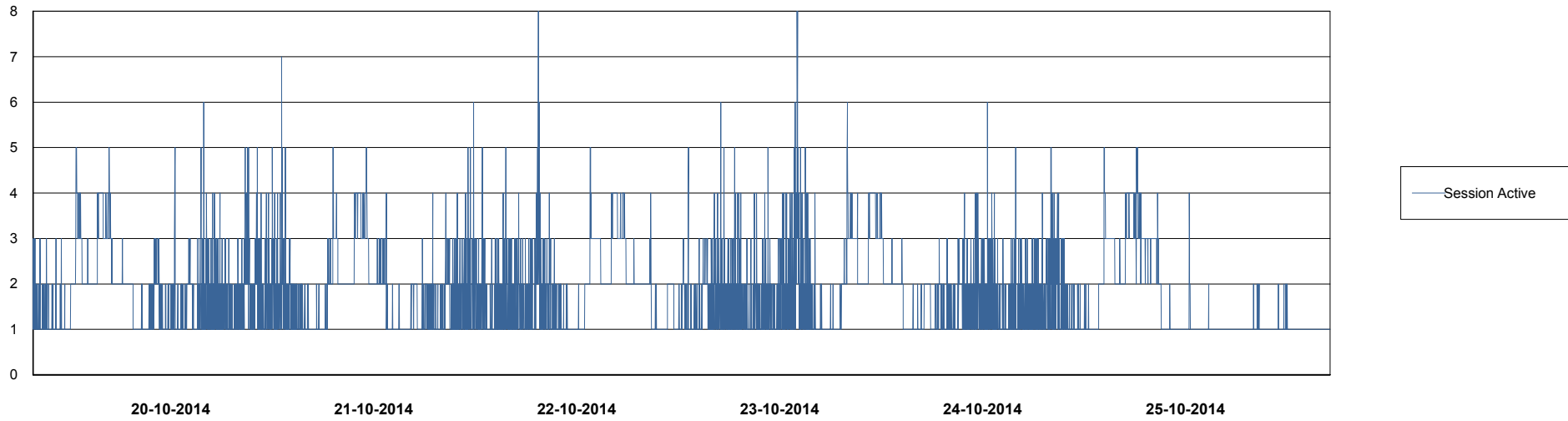
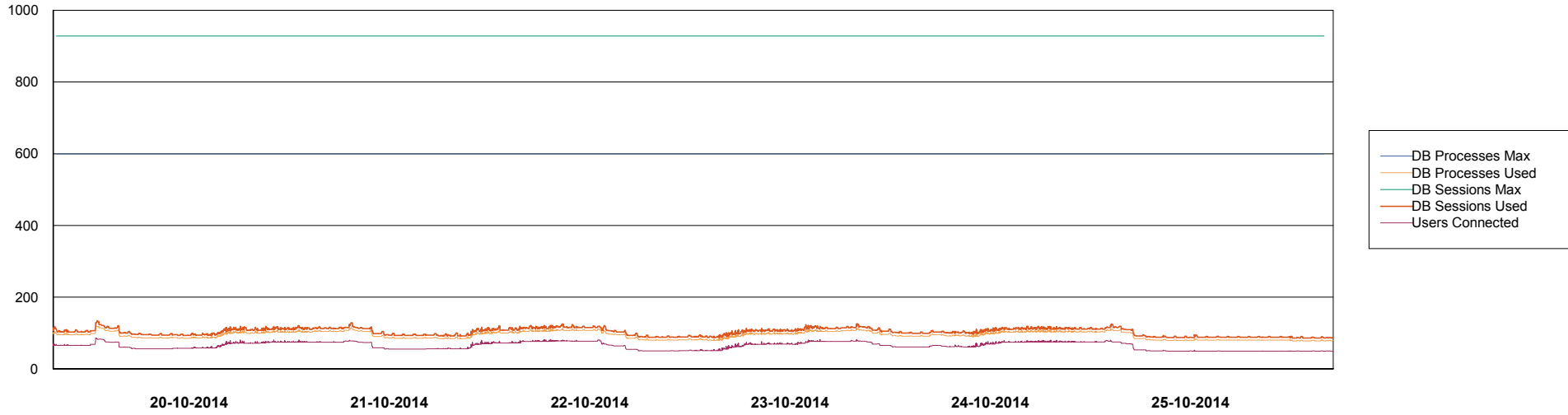


Weekly SLA Customer Report

Customer AUJ_Production
Database ID 41



DATABASE PERFORMANCE AUJDB_Production

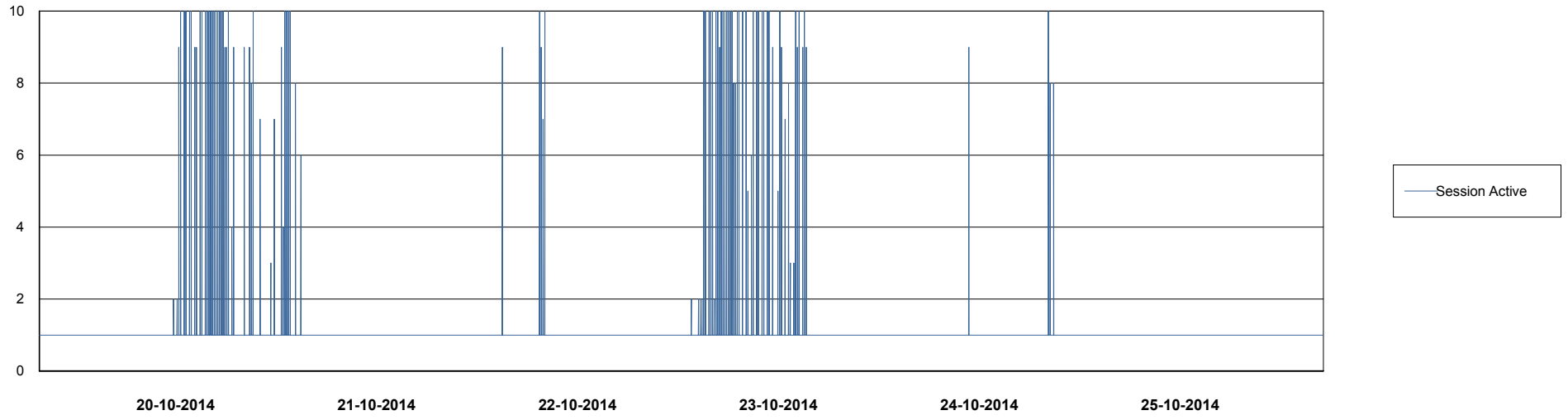
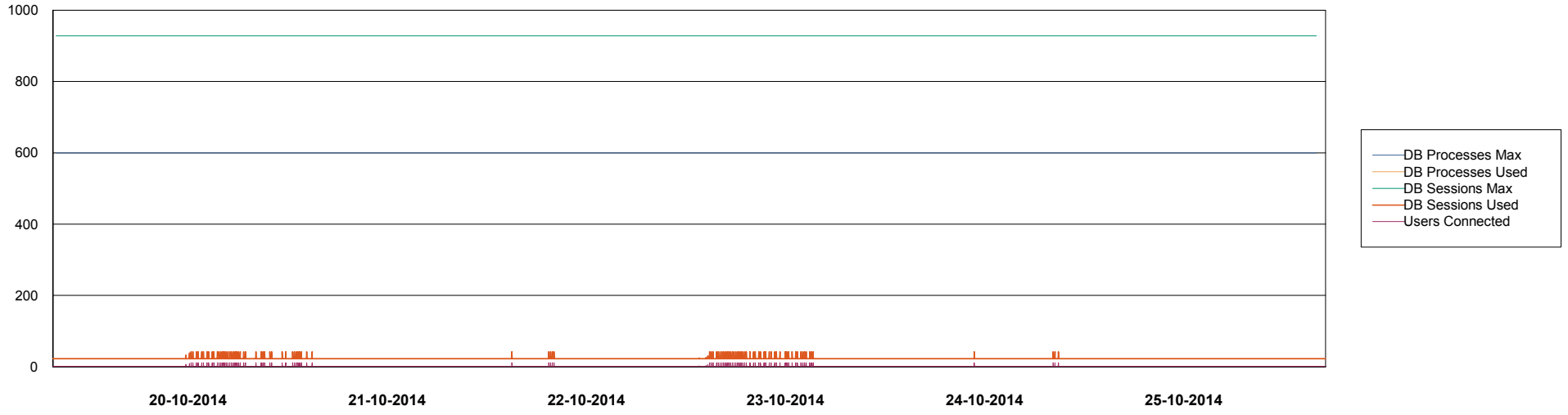


Weekly SLA Customer Report

Customer AUJ_Production
Database ID 41



DATABASE PERFORMANCE AUJDB_Standby

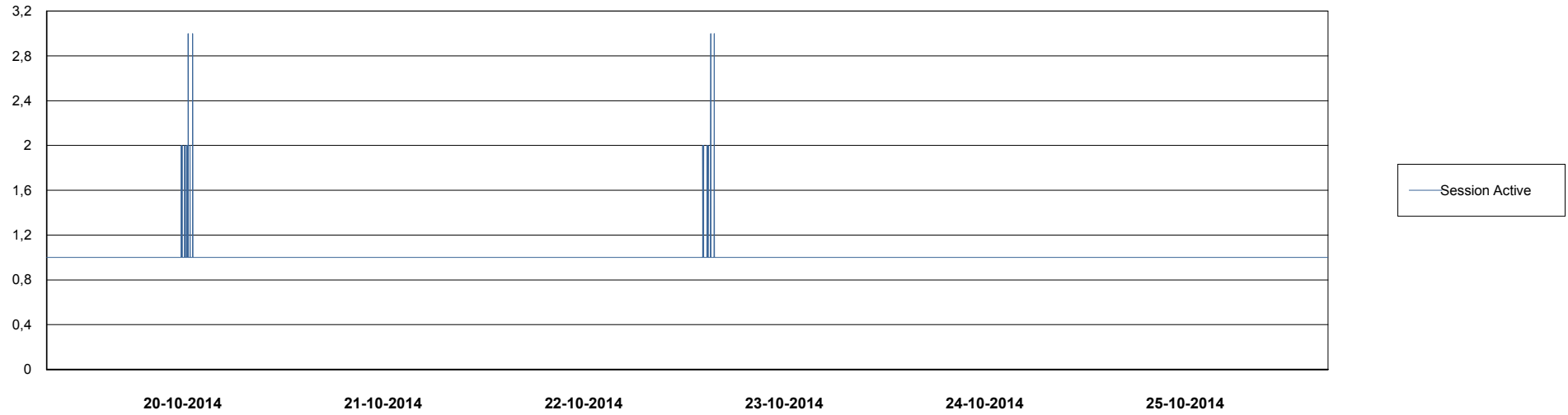
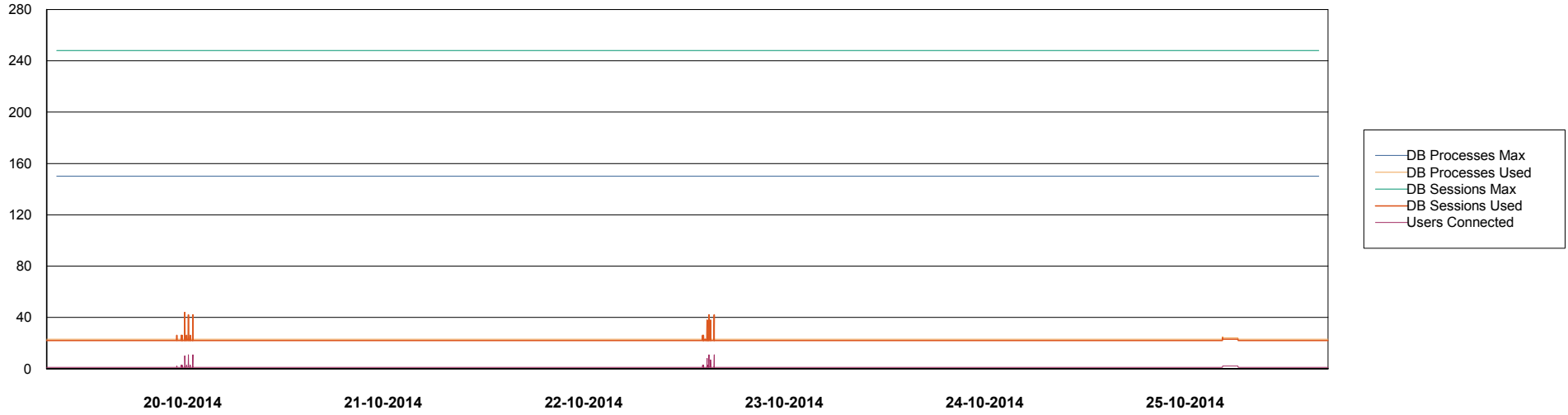


Weekly SLA Customer Report

Customer AUJ_Production
Database ID 41



DATABASE PERFORMANCE AUJDB3_Standby



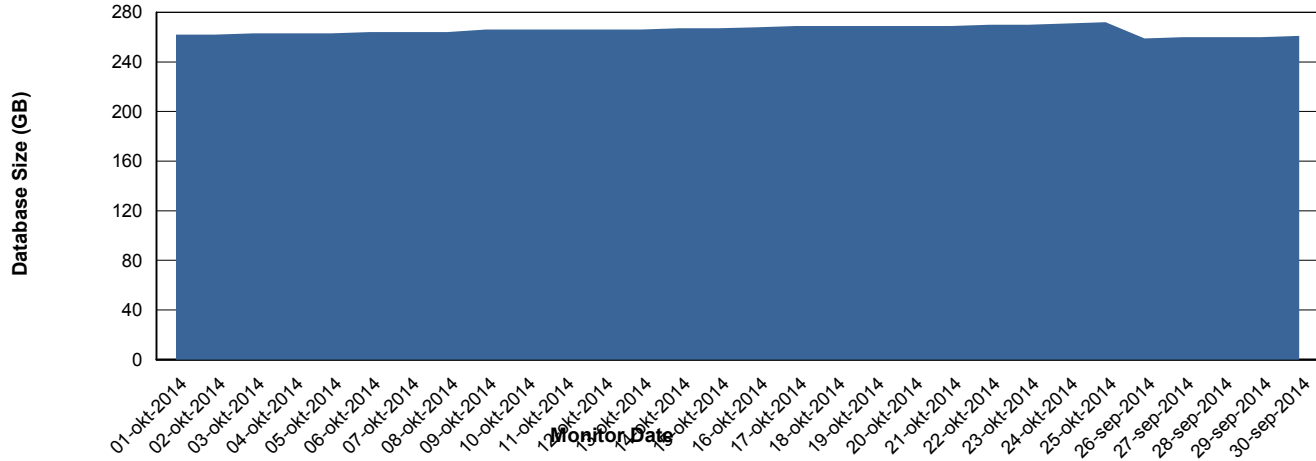
Weekly SLA Customer Report

Customer AUJ_Production
Database ID 41



=====
DATABASE SIZE AUJDB_Production
=====

Database growth over last month



Weekly SLA Customer Report

Customer AUJ_Production
 Database ID 41



=====
 DATABASE TABLESPACES AUJDB_BI
 =====

TOTAL DATABASE SIZE PER TABLESPACE

Date	Tablespace Name	Filesize (Gb)	Usedsize (Gb)	Percentage free
25-10-2014	ABSDATA	99	84	15
	INDX	164	141	14
24-10-2014	ABSDATA	99	84	15
	INDX	164	141	14
23-10-2014	ABSDATA	99	84	15
	INDX	164	141	14
22-10-2014	ABSDATA	99	84	15
	INDX	164	141	14
21-10-2014	ABSDATA	99	84	15
	INDX	164	141	14
20-10-2014	ABSDATA	99	84	15
	INDX	164	141	14
19-10-2014	ABSDATA	99	84	15
	INDX	164	141	14

Weekly SLA Customer Report

Customer AUJ_Production
 Database ID 41



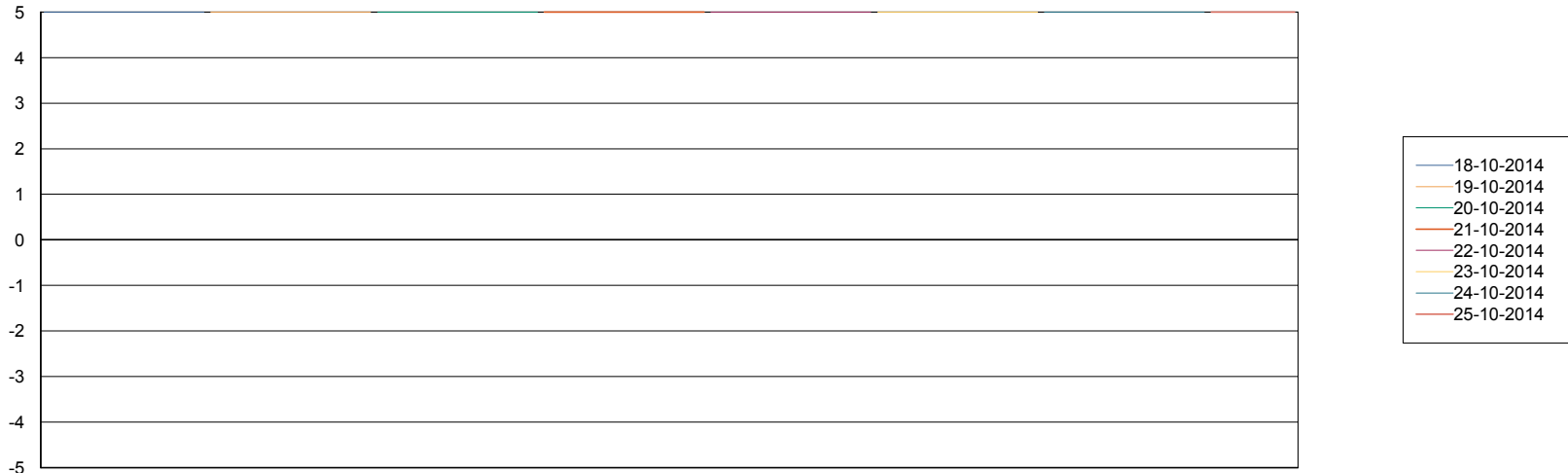
=====
 DATABASE TABLESPACES AUJDB_Production
 =====

TOTAL DATABASE SIZE PER TABLESPACE

Date	Tablespace Name	Filesize (Gb)	Usedsize (Gb)	Percentage free
25-10-2014	ABSDATA	139	118	15
	INDX	179	152	15
24-10-2014	ABSDATA	139	118	15
	INDX	179	152	15
23-10-2014	ABSDATA	139	117	16
	INDX	179	152	15
22-10-2014	ABSDATA	139	117	16
	INDX	179	151	16
21-10-2014	ABSDATA	139	117	16
	INDX	179	151	16
20-10-2014	ABSDATA	139	117	16
	INDX	179	151	16
19-10-2014	ABSDATA	139	116	17
	INDX	177	151	15

=====
 STANDBY DATABASE HEALTH AUJ_Production
 =====

Recovery lag for last 7 days



Weekly SLA Customer Report

Customer AUJ_Production
Database ID 41

