

Weekly SLA Customer Report

Customer NIX_Production
Database ID 51



=====
HARDDISK USAGE NIX_PRD_ABSAPP1
=====

	Total disk space on C (GB)	Free disk space on C (GB)
18-10-2014	136	85
17-10-2014	136	85
16-10-2014	136	86
15-10-2014	136	86
14-10-2014	136	86
13-10-2014	136	86
12-10-2014	136	86

=====
HARDDISK USAGE NIX_PRD_ABSWEB1
=====

	Total disk space on C (GB)	Free disk space on C (GB)
18-10-2014	930	730
17-10-2014	930	730
16-10-2014	930	730
15-10-2014	930	731
14-10-2014	930	731
13-10-2014	930	731
12-10-2014	930	731

Weekly SLA Customer Report

Customer NIX_Production
 Database ID 51



=====
 HARDDISK USAGE NIX_PRD_ORACLE_BI1
 =====

	Total disk space on C (GB)	Free disk space on C (GB)	Total disk space on D (GB)	Free disk space on D (GB)	Total disk space on E (GB)	Free disk space on E (GB)
18-10-2014	40	6	279	180	236	169
17-10-2014	40	6	279	180	236	168
16-10-2014	40	6	279	180	236	168
15-10-2014	40	6	279	180	236	168
14-10-2014	40	6	279	180	236	168
13-10-2014	40	6	279	180	236	168
12-10-2014	40	6	279	180	236	168

=====
 HARDDISK USAGE NIX_PRD_ORCDB1
 =====

	Total disk space on C (GB)	Free disk space on C (GB)	Total disk space on D (GB)	Free disk space on D (GB)	Total disk space on E (GB)	Free disk space on E (GB)
18-10-2014	136	69	136	36	136	51
17-10-2014	136	23	136	36	136	90
16-10-2014	136	21	136	35	136	100
15-10-2014	136	21	136	35	136	100
14-10-2014	136	21	136	35	136	100
13-10-2014	136	21	136	35	136	100
12-10-2014	136	21	136	35	136	100

Weekly SLA Customer Report

Customer NIX_Production
 Database ID 51



=====
 HARDDISK USAGE NIX_PRD_ORCDB2
 =====

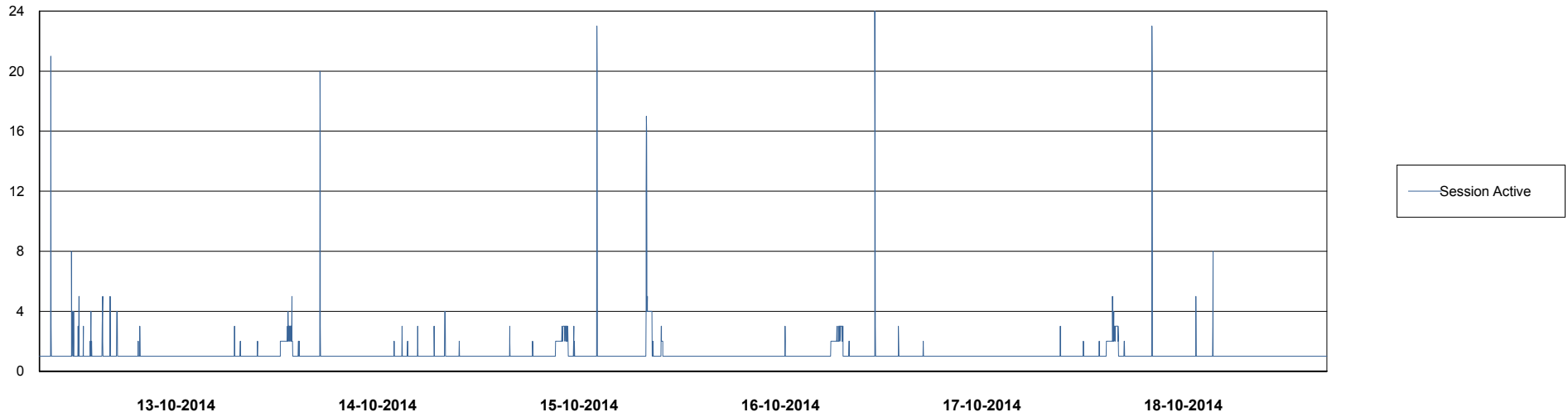
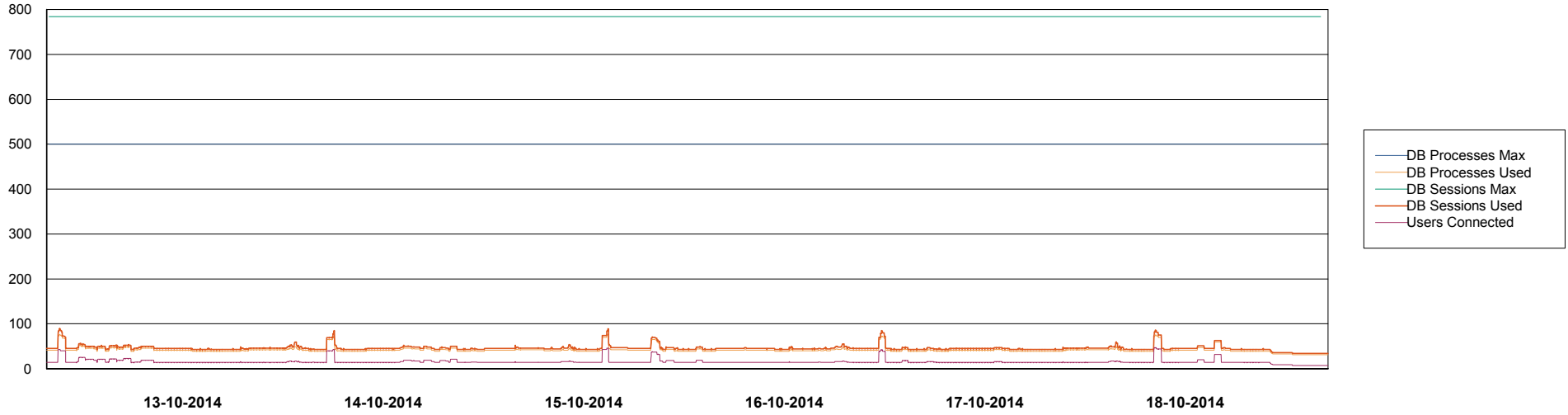
	Total disk space on C (GB)	Free disk space on C (GB)	Total disk space on D (GB)	Free disk space on D (GB)	Total disk space on E (GB)	Free disk space on E (GB)
18-10-2014	279	46	279	65	279	191
17-10-2014	279	44	279	55	279	97
16-10-2014	279	43	279	48	279	14
15-10-2014	279	45	279	48	279	6
14-10-2014	279	46	279	48	279	20
13-10-2014	279	46	279	48	279	51
12-10-2014	279	46	279	48	279	95

Weekly SLA Customer Report

Customer NIX_Production
Database ID 51



=====
DATABASE PERFORMANCE NIXDB_BI
=====



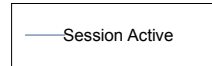
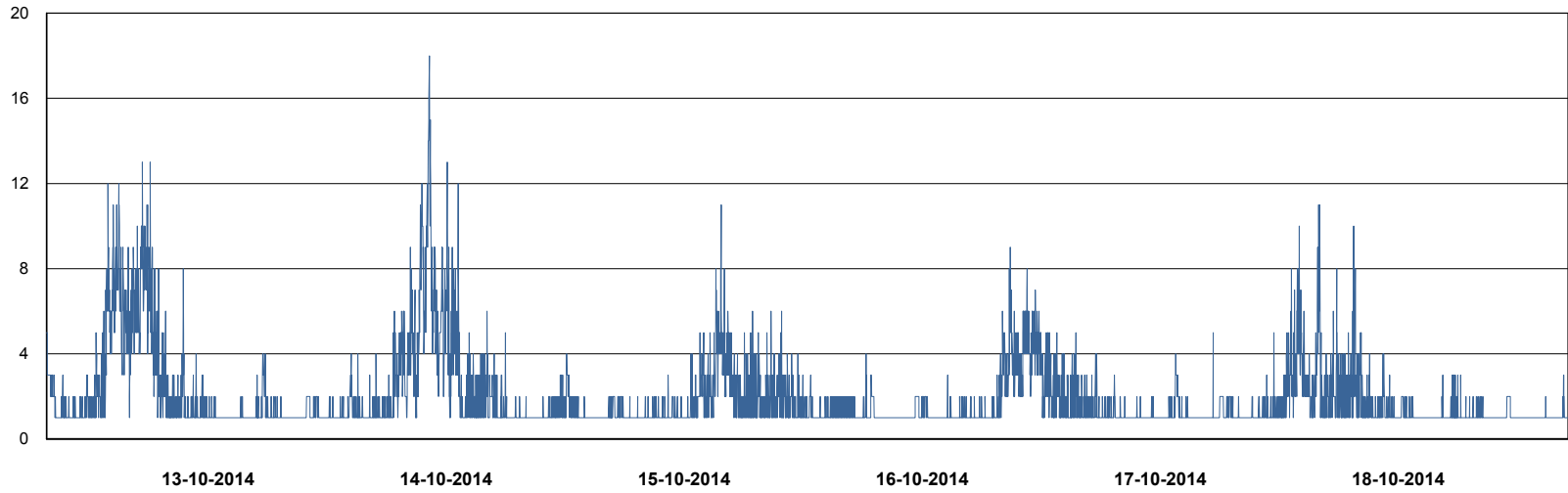
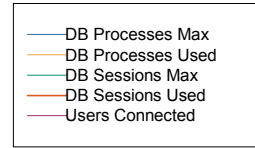
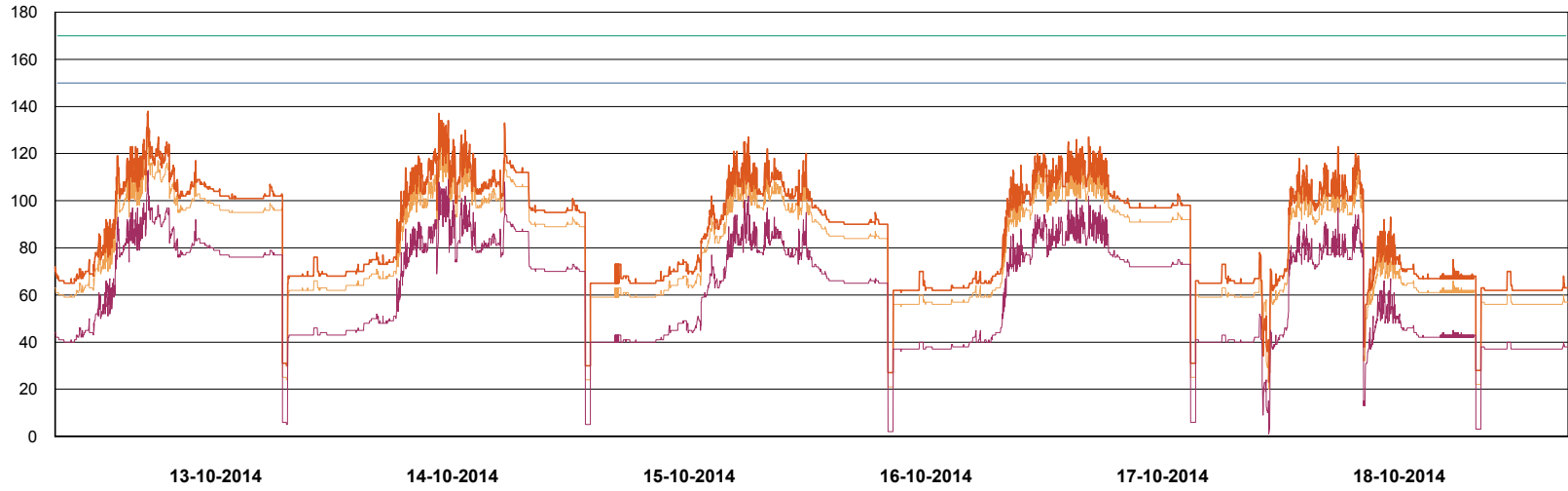
Weekly SLA Customer Report

Customer NIX_Production
Database ID 51



DATABASE PERFORMANCE

NIXDB_Production

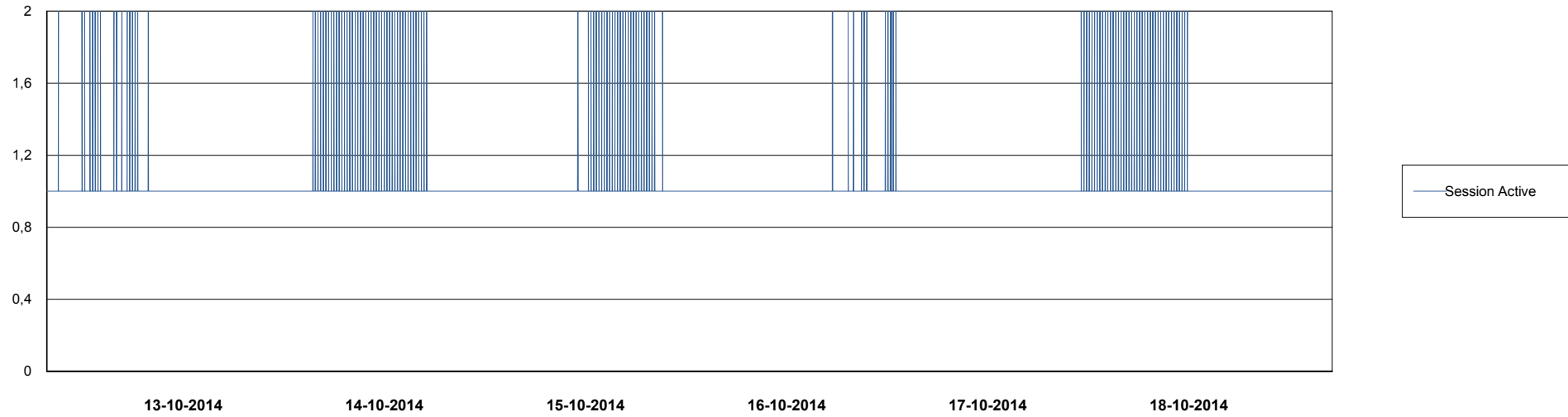
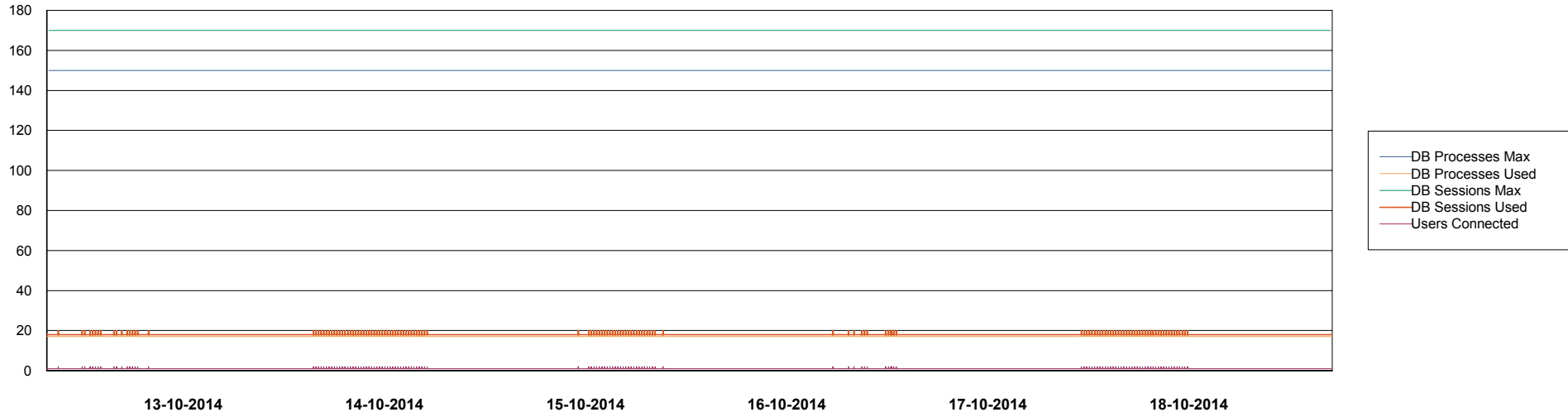


Weekly SLA Customer Report

Customer NIX_Production
Database ID 51



DATABASE PERFORMANCE NIXDB_Standby



Weekly SLA Customer Report

Customer NIX_Production
 Database ID 51



=====
 DATABASE TABLESPACES NIXDB_BI
 =====

TOTAL DATABASE SIZE PER TABLESPACE

Date	Tablespace Name	Filesize (Gb)	Usedsize (Gb)	Percentage free
18-10-2014	ABSDATA	20	17	15
	INDX	40	27	33
17-10-2014	ABSDATA	20	17	15
	INDX	40	27	33
16-10-2014	ABSDATA	20	17	15
	INDX	40	27	33
15-10-2014	ABSDATA	20	17	15
	INDX	40	27	33
14-10-2014	ABSDATA	20	17	15
	INDX	40	27	33
13-10-2014	ABSDATA	20	17	15
	INDX	40	27	33
12-10-2014	ABSDATA	20	17	15
	INDX	40	27	33

Weekly SLA Customer Report

Customer NIX_Production
 Database ID 51



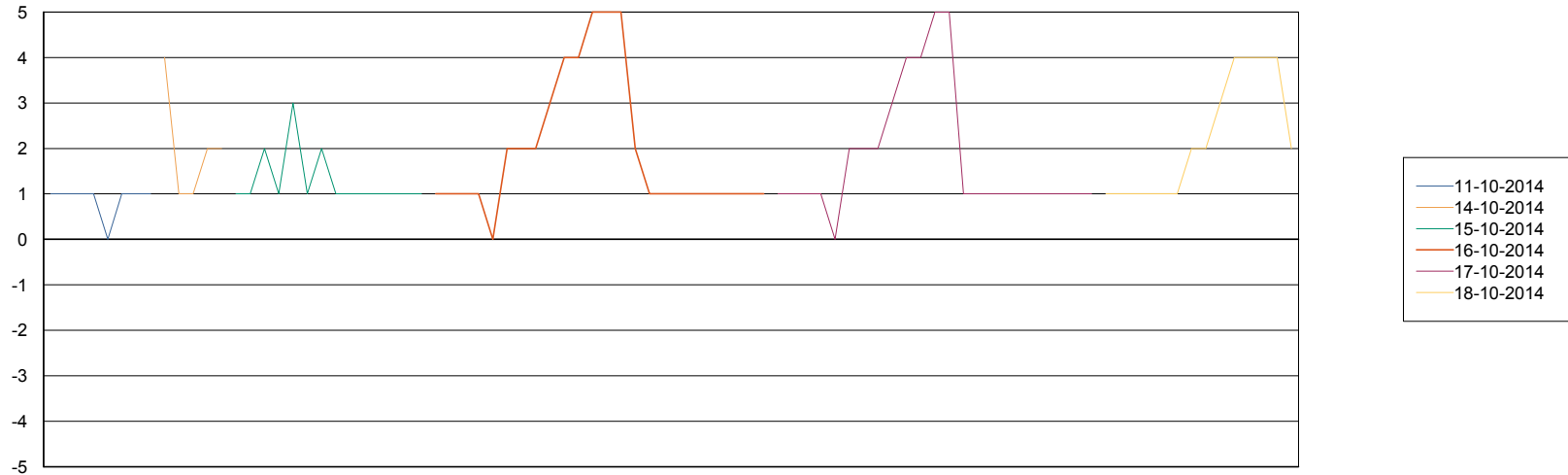
=====
 DATABASE TABLESPACES NIXDB_Production
 =====

TOTAL DATABASE SIZE PER TABLESPACE

Date	Tablespace Name	Filesize (Gb)	Usedsize (Gb)	Percentage free
18-10-2014	ABSDATA	40	28	30
	INDX	97	77	21
17-10-2014	ABSDATA	40	28	30
	INDX	97	77	21
16-10-2014	ABSDATA	40	28	30
	INDX	97	77	21
15-10-2014	ABSDATA	40	28	30
	INDX	97	77	21
14-10-2014	ABSDATA	40	28	30
	INDX	97	77	21
13-10-2014	ABSDATA	40	28	30
	INDX	97	76	22
12-10-2014	ABSDATA	40	28	30
	INDX	97	76	22

=====
 STANDBY DATABASE HEALTH NIX_Production
 =====

Recovery lag for last 7 days



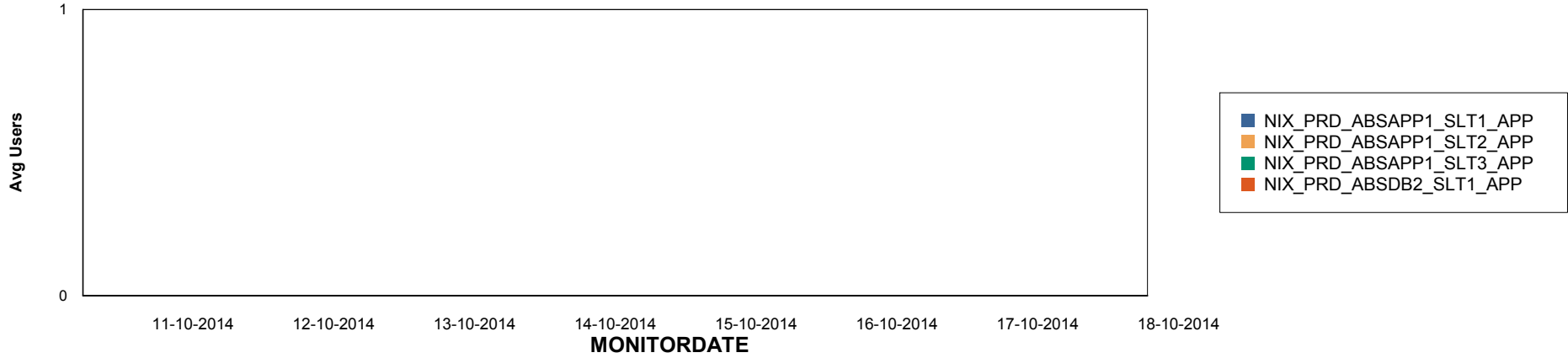
Weekly SLA Customer Report

Customer NIX_Production
Database ID 51

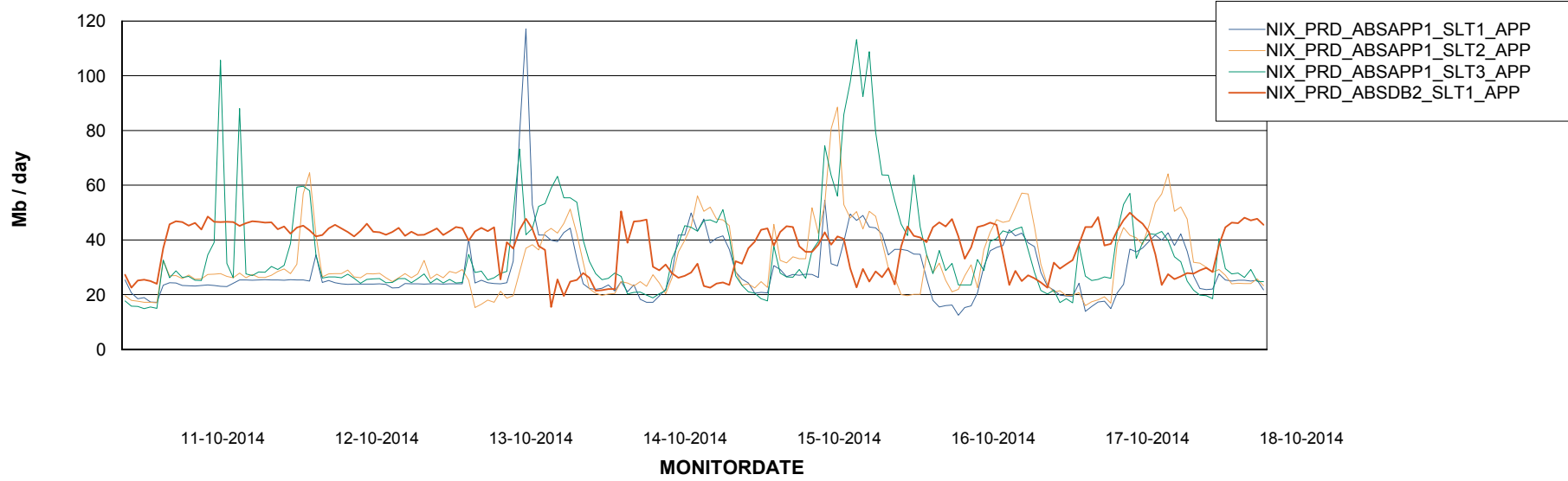


=====
ABSolute Application Server Services
=====

Disaster per ABS Server



Avg memory used per ABS Server Service



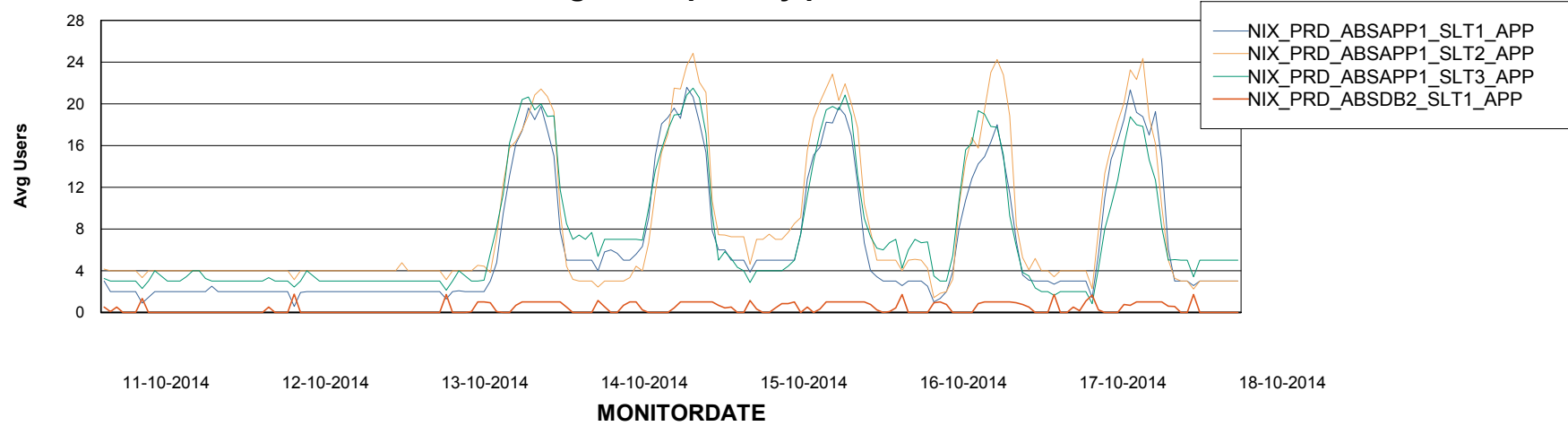
Weekly SLA Customer Report

Customer NIX_Production
Database ID 51



=====
ABSolute Application Server Services
=====

Avg users per day per ABS server



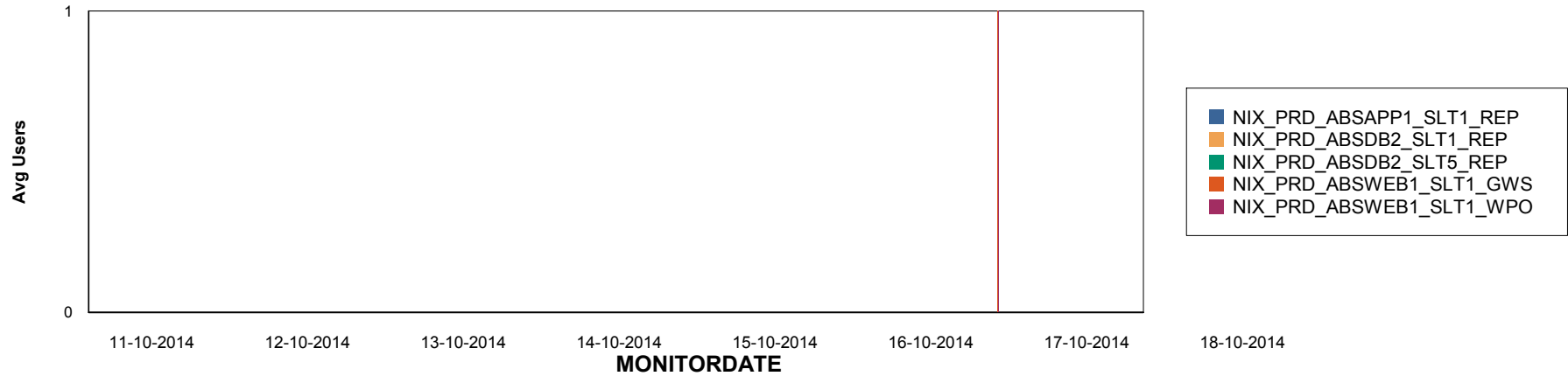
Weekly SLA Customer Report

Customer NIX_Production
Database ID 51

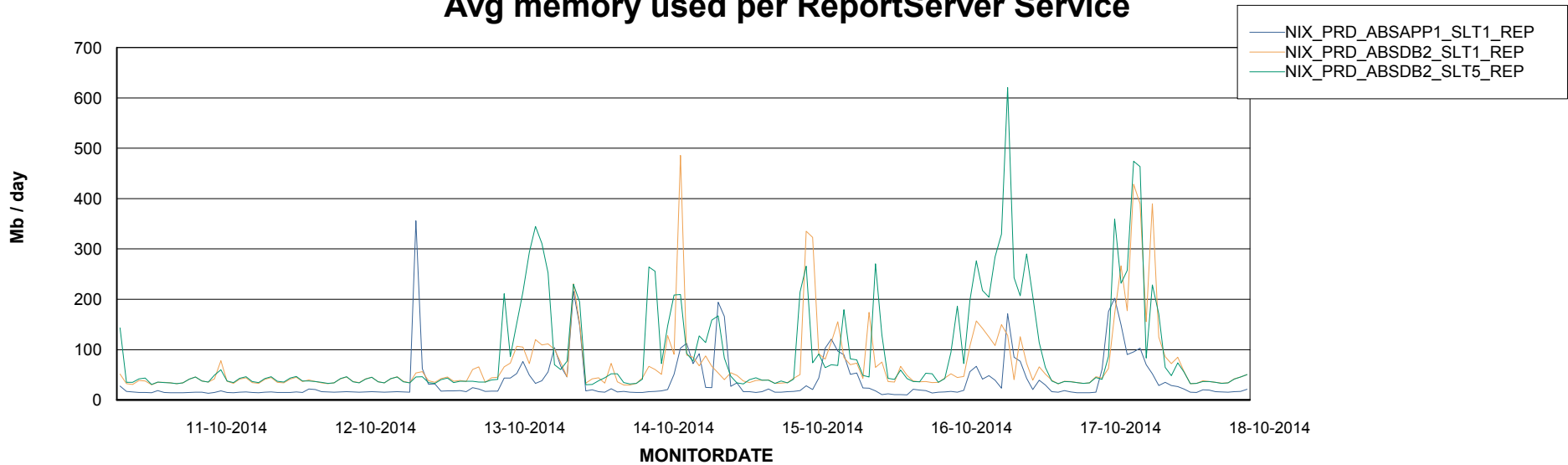


=====
ABSolute Application ReportServer Services
=====

Disaster per ReportServer



Avg memory used per ReportServer Service



Weekly SLA Customer Report

Customer NIX_Production
Database ID 51



Disaster per ABS component

