

Weekly SLA Customer Report

Customer LLG_Production
 Database ID 53



=====
 HARDDISK USAGE LLG_PRD_BI01
 =====

	Total disk space on C (GB)	Free disk space on C (GB)
18-10-2014	559	398
17-10-2014	559	398
16-10-2014	559	398
15-10-2014	559	398
14-10-2014	559	398
13-10-2014	559	398
12-10-2014	559	398

=====
 HARDDISK USAGE LLG_PRD_OR01
 =====

	Total disk space on C (GB)	Free disk space on C (GB)	Total disk space on D (GB)	Free disk space on D (GB)
18-10-2014	279	178	600	92
17-10-2014	279	178	600	57
16-10-2014	279	178	600	48
15-10-2014	279	178	600	56
14-10-2014	279	178	600	63
13-10-2014	279	178	600	78
12-10-2014	279	178	600	97

Weekly SLA Customer Report

Customer LLG_Production
 Database ID 53



=====
 HARDDISK USAGE LLG_PRD_OR2
 =====

	Total disk space on C (GB)	Free disk space on C (GB)	Total disk space on D (GB)	Free disk space on D (GB)
18-10-2014	293	249	545	127
17-10-2014	293	249	545	128
16-10-2014	293	249	545	129
15-10-2014	293	249	545	130
14-10-2014	293	249	545	131
13-10-2014	293	249	545	141
12-10-2014	293	249	545	151

=====
 HARDDISK USAGE LLG_PRD_vABS01
 =====

	Total disk space on C (GB)	Free disk space on C (GB)	Total disk space on D (GB)	Free disk space on D (GB)
18-10-2014	150	56	150	146
17-10-2014	150	65	150	146
16-10-2014	150	65	150	146
15-10-2014	150	65	150	146
14-10-2014	150	66	150	146
13-10-2014	150	66	150	146
12-10-2014	150	66	150	146

Weekly SLA Customer Report

Customer LLG_Production
Database ID 53



HARDDISK USAGE LLG_PRD_vABS02

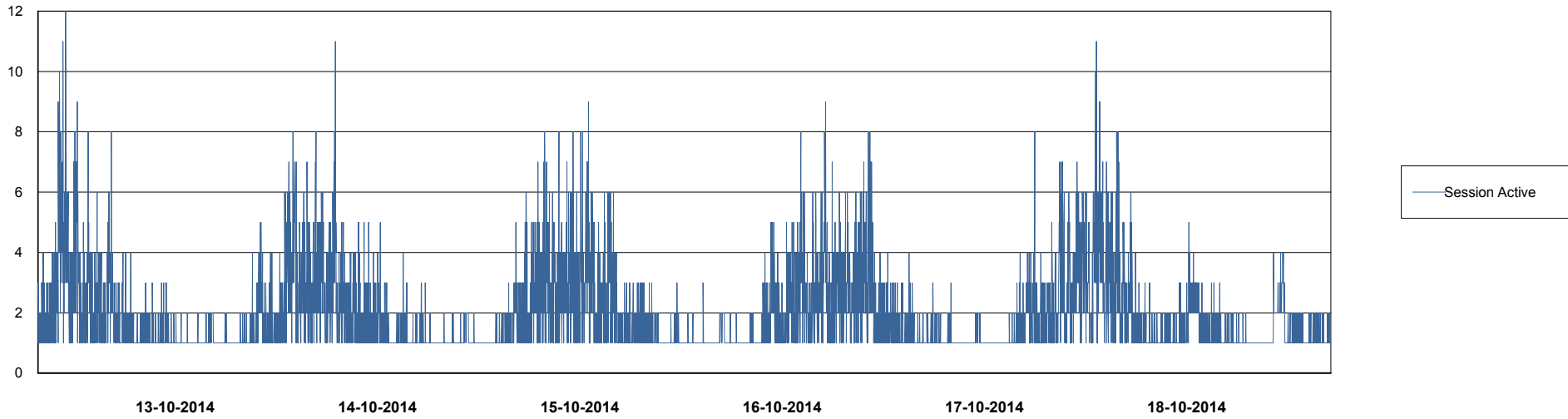
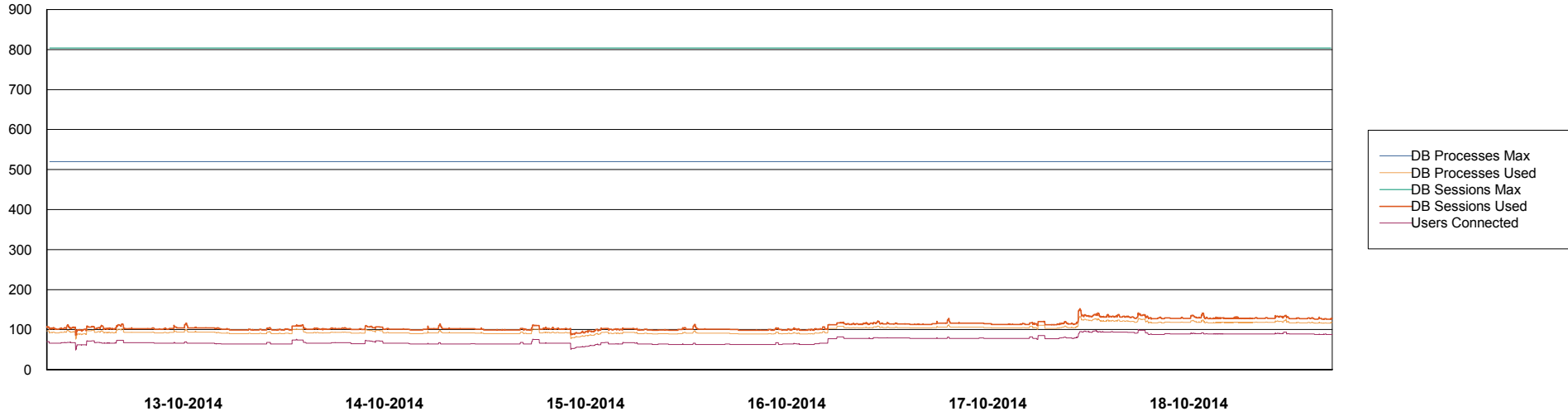
	Total disk space on C (GB)	Free disk space on C (GB)	Total disk space on D (GB)	Free disk space on D (GB)
18-10-2014	150	80	150	127
17-10-2014	150	88	150	127
16-10-2014	150	89	150	127
15-10-2014	150	89	150	127
14-10-2014	150	90	150	127
13-10-2014	150	90	150	127
12-10-2014	150	90	150	127

Weekly SLA Customer Report

Customer LLG_Production
Database ID 53



DATABASE PERFORMANCE LLGDB_Production

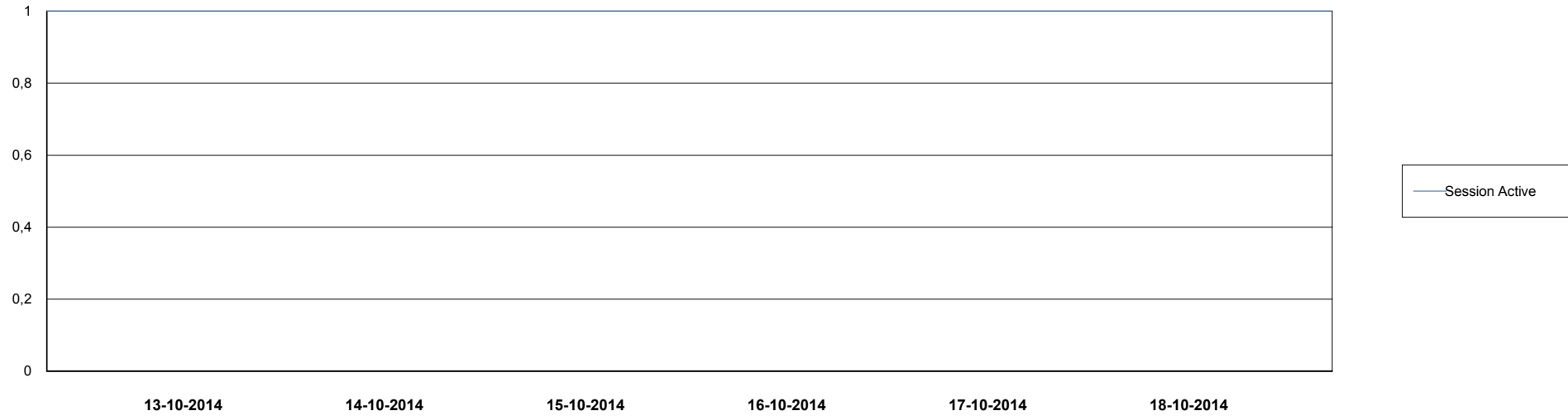
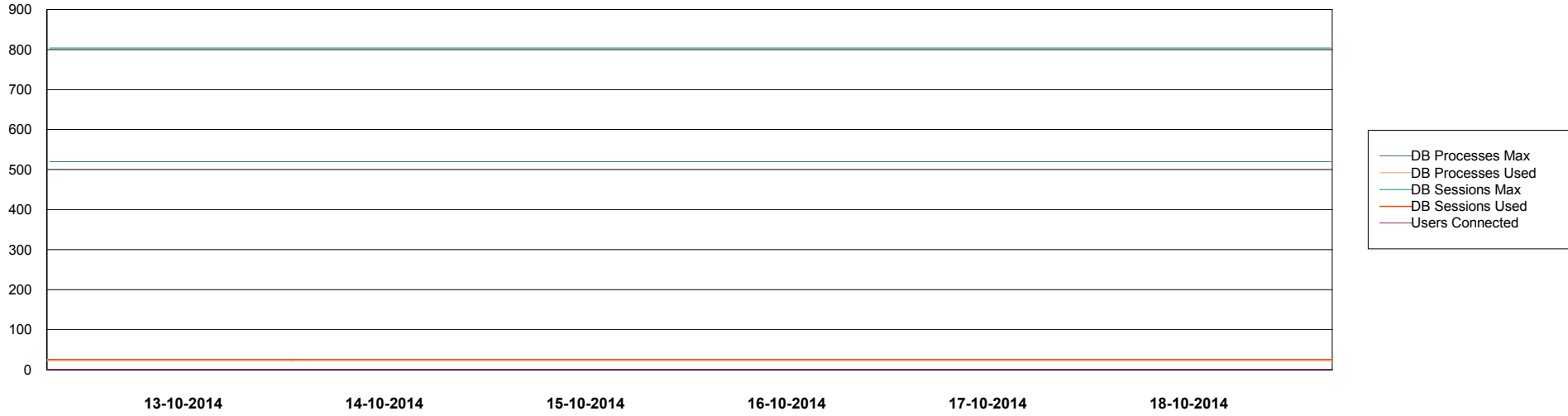


Weekly SLA Customer Report

Customer LLG_Production
Database ID 53



DATABASE PERFORMANCE LLGDB_Standby



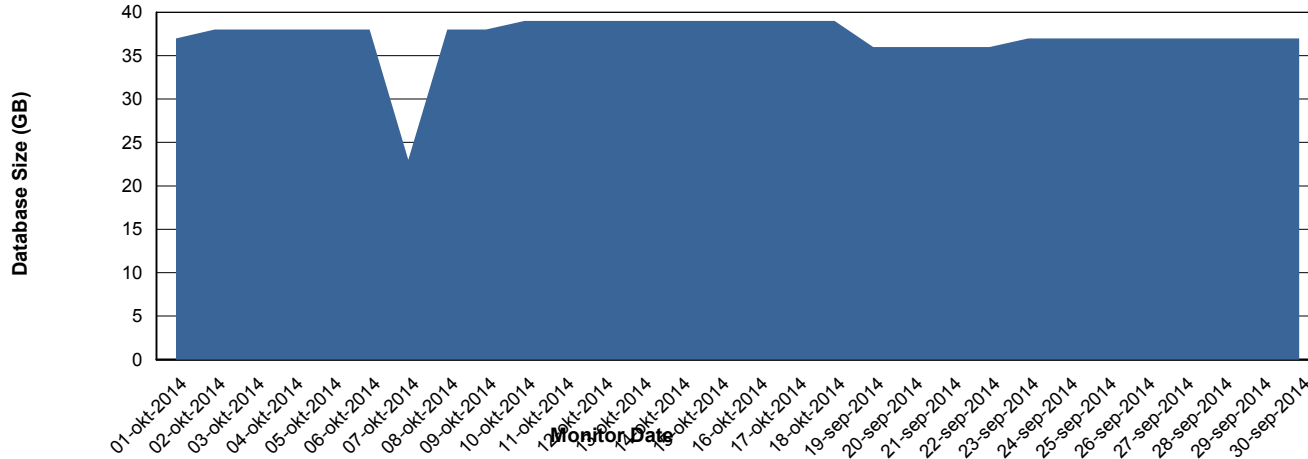
Weekly SLA Customer Report

Customer LLG_Production
 Database ID 53



=====
 DATABASE SIZE LLGDB_Production
 =====

Database growth over last month



=====
 DATABASE TABLESPACES LLGDB_Production
 =====

TOTAL DATABASE SIZE PER TABLESPACE

Date	Tablespace Name	Filesize (Gb)	Usedsize (Gb)	Percentage free
18-10-2014	ABSDATA	20	13	35
	INDX	40	24	40
17-10-2014	ABSDATA	20	13	35
	INDX	40	24	40
16-10-2014	ABSDATA	20	13	35
	INDX	40	24	40
15-10-2014	ABSDATA	20	13	35
	INDX	40	24	40
14-10-2014	ABSDATA	20	13	35
	INDX	40	24	40
13-10-2014	ABSDATA	20	13	35
	INDX	40	24	40
12-10-2014	ABSDATA	20	13	35
	INDX	40	23	43

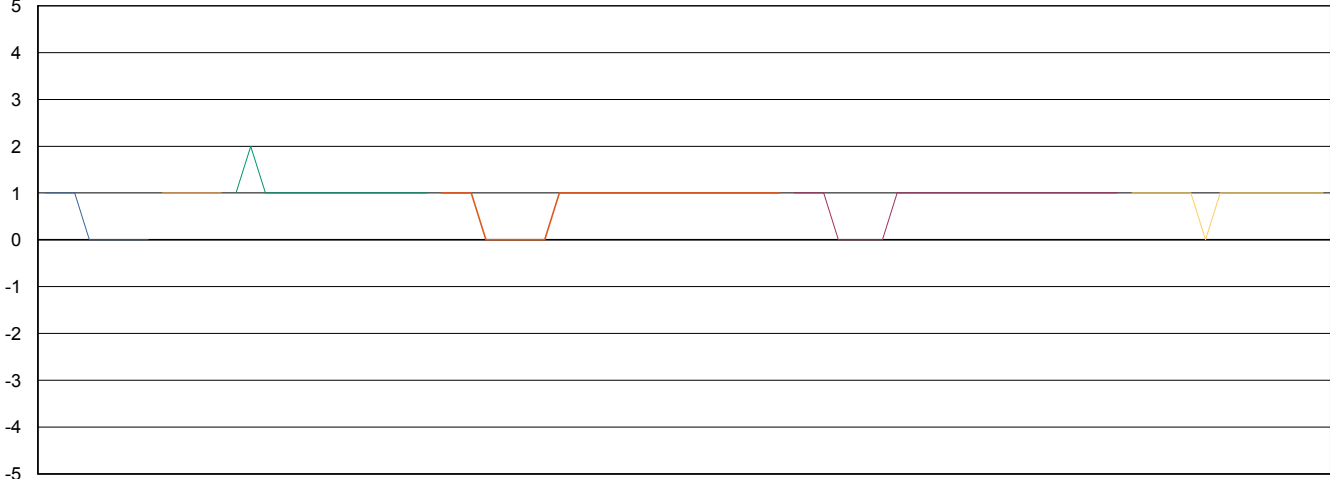
Weekly SLA Customer Report

Customer LLG_Production
Database ID 53



=====
STANDBY DATABASE HEALTH LLG_Production
=====

Recovery lag for last 7 days



- 11-10-2014
- 14-10-2014
- 15-10-2014
- 16-10-2014
- 17-10-2014
- 18-10-2014

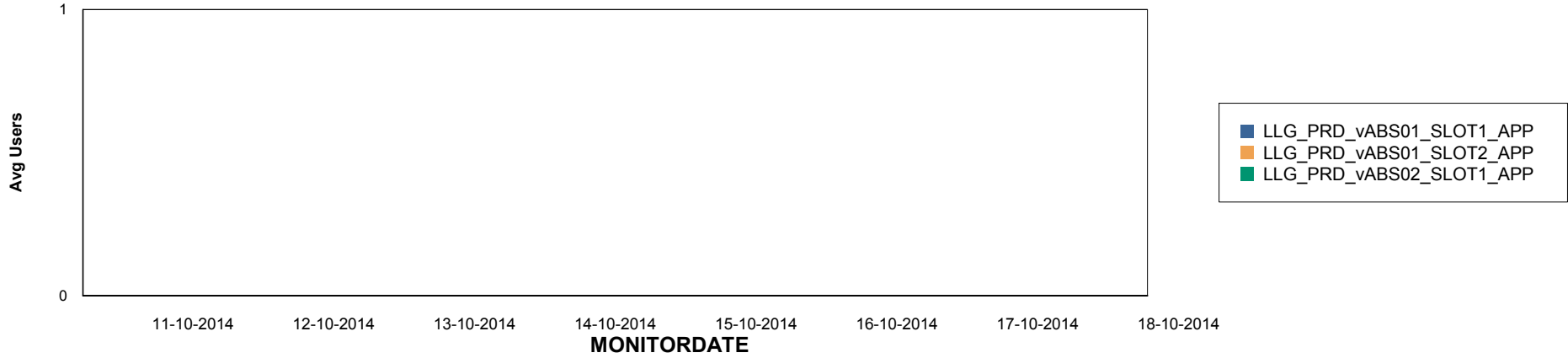
Weekly SLA Customer Report

Customer LLG_Production
Database ID 53

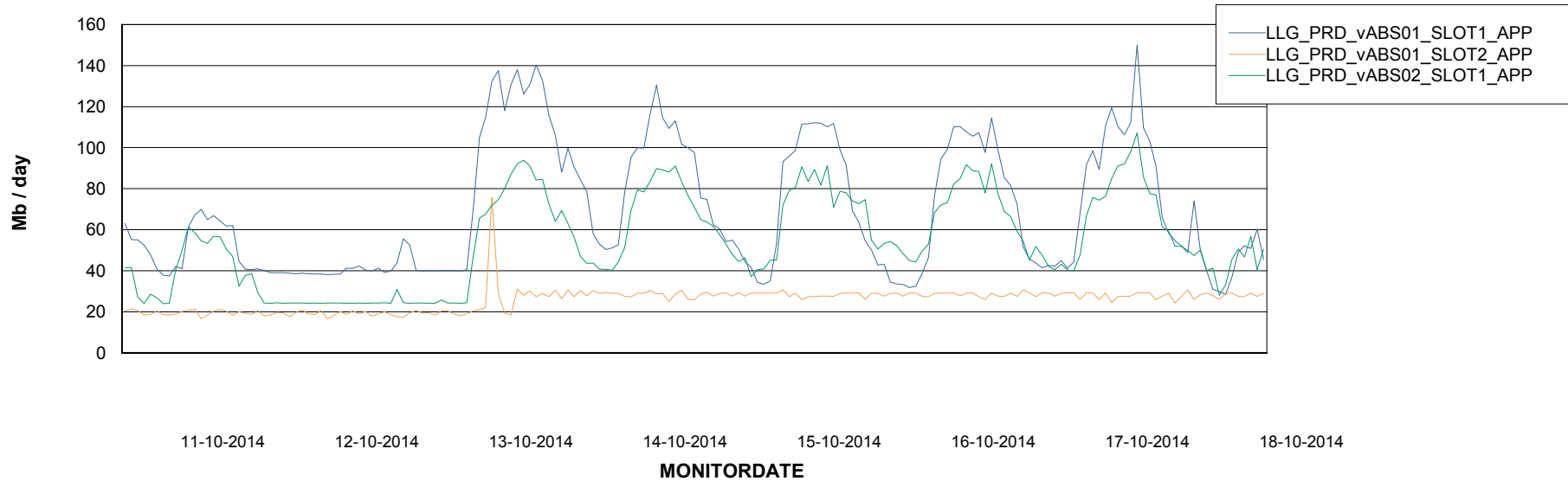


=====
ABSolute Application Server Services
=====

Disaster per ABS Server



Avg memory used per ABS Server Service



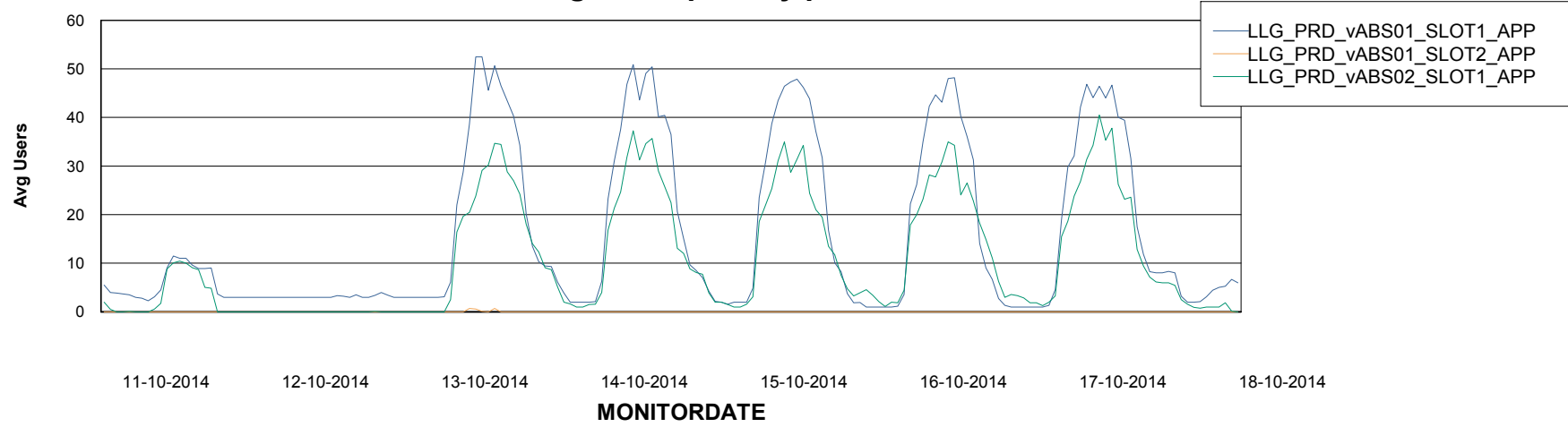
Weekly SLA Customer Report

Customer LLG_Production
Database ID 53



=====
ABSolute Application Server Services
=====

Avg users per day per ABS server



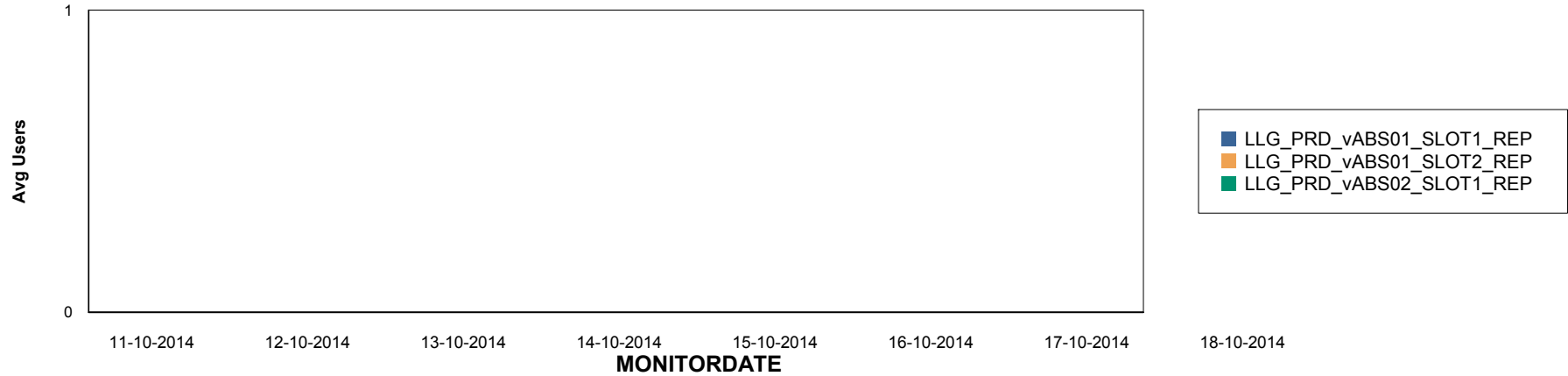
Weekly SLA Customer Report

Customer LLG_Production
Database ID 53

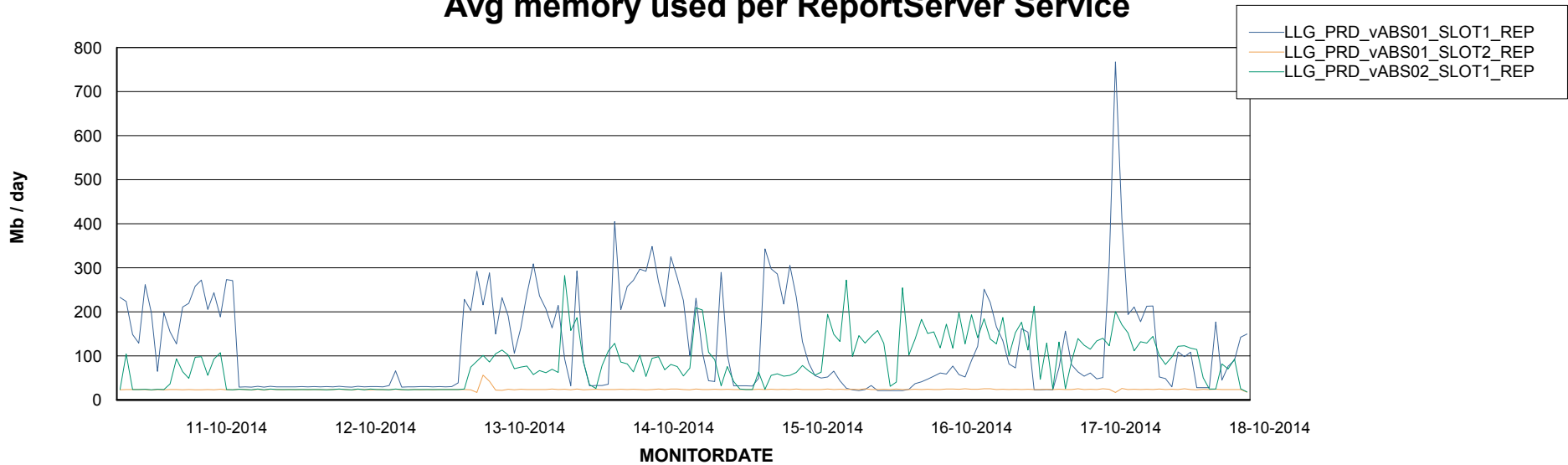


ABSSolute Application ReportServer Services

Disaster per ReportServer



Avg memory used per ReportServer Service



Weekly SLA Customer Report

Customer LLG_Production
Database ID 53



Disaster per ABS component

