

## Weekly SLA Customer Report

Customer     JWR Production  
 Database ID    43



=====  
 HARDDISK USAGE    JWR\_PRD\_JWR-ABS-01  
 =====

	Used disk space on / (GB)	Total disk space on / (GB)	Free disk space on / (GB)
18-10-2014	27	49	20
17-10-2014	27	49	20
16-10-2014	27	49	20
15-10-2014	27	49	20
14-10-2014	27	49	20
13-10-2014	29	49	18
12-10-2014	29	49	18

=====  
 HARDDISK USAGE    JWR\_PRD\_JWR-ABS-02  
 =====

	Used disk space on / (GB)	Total disk space on / (GB)	Free disk space on / (GB)
18-10-2014	25	49	21
17-10-2014	25	49	21
16-10-2014	25	49	21
15-10-2014	25	49	21
14-10-2014	25	49	22
13-10-2014	27	49	20
12-10-2014	27	49	20

## Weekly SLA Customer Report

Customer      JWR Production  
 Database ID    43



=====

HARDDISK USAGE    JWR\_PRD\_JWR-ODB-01

=====

	Used disk space on / (GB)	Total disk space on / (GB)	Free disk space on / (GB)
18-10-2014	74	90	11
17-10-2014	74	90	11
16-10-2014	74	90	11
15-10-2014	74	90	11
14-10-2014	74	90	11
13-10-2014	75	90	11
12-10-2014	74	90	11

=====

HARDDISK USAGE    JWR\_PRD\_JWR-ODB-02

=====

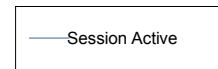
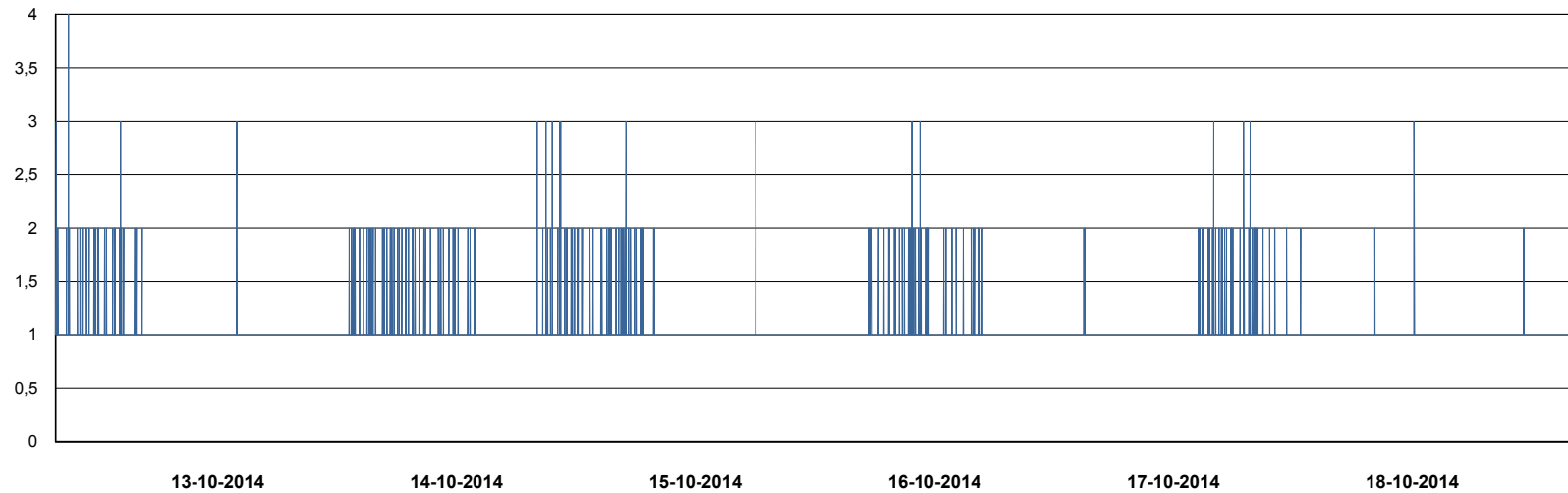
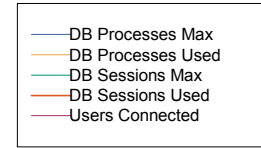
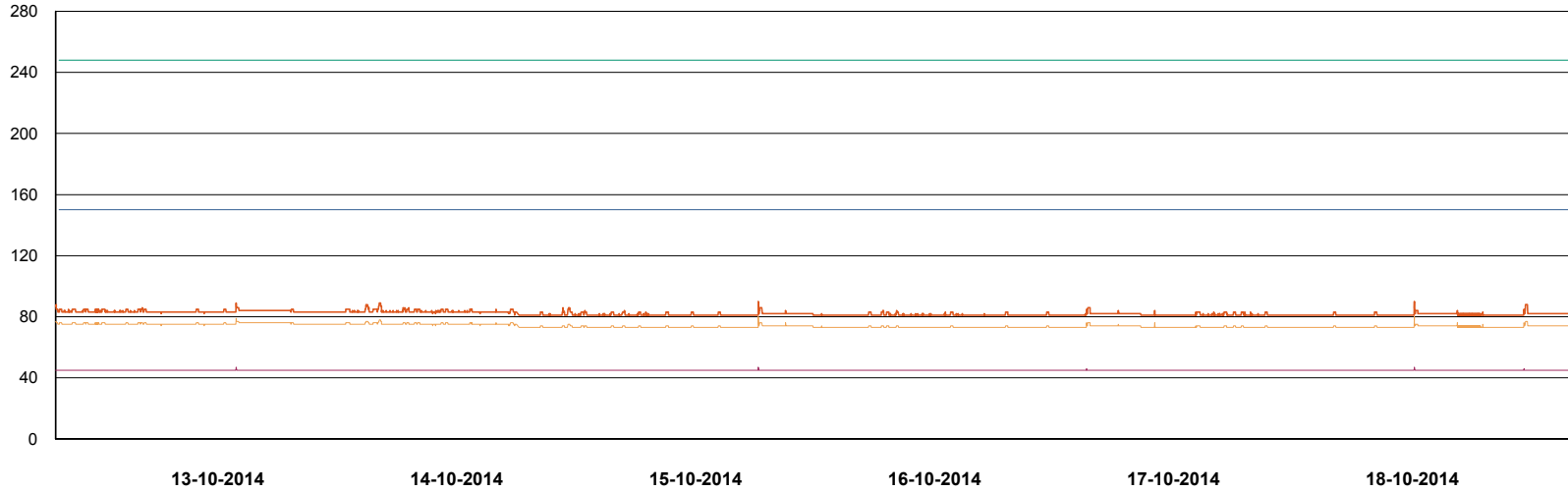
	Used disk space on / (GB)	Total disk space on / (GB)	Free disk space on / (GB)
18-10-2014	91	138	40
17-10-2014	91	138	39
16-10-2014	91	138	39
15-10-2014	92	138	39
14-10-2014	92	138	39
13-10-2014	92	138	39
12-10-2014	91	138	39

# Weekly SLA Customer Report

Customer JWR Production  
Database ID 43



DATABASE PERFORMANCE JWRDB\_Production



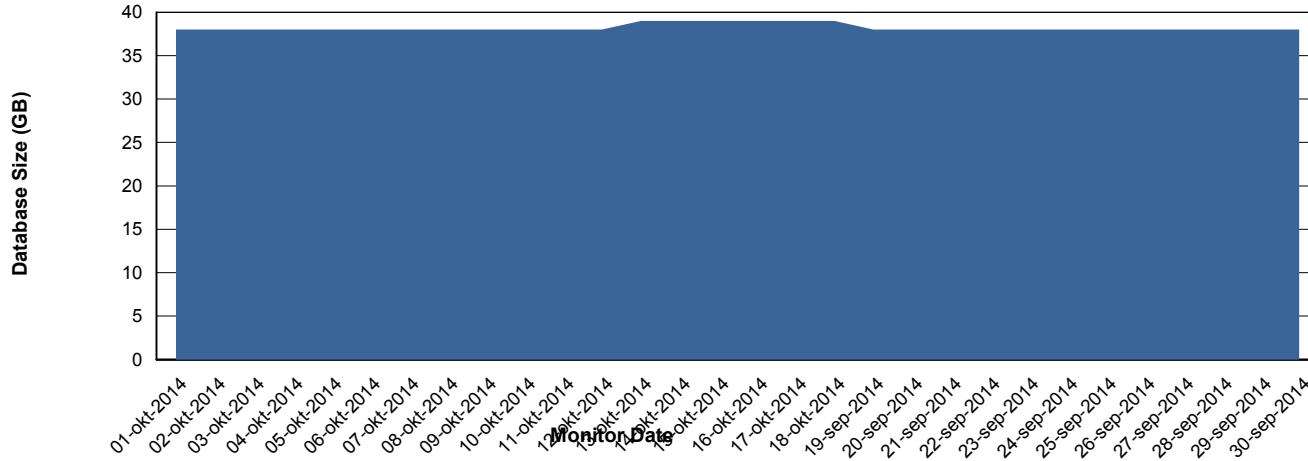
# Weekly SLA Customer Report

Customer JWR Production  
 Database ID 43



=====  
 DATABASE SIZE JWRDB\_Production  
 =====

## Database growth over last month



=====  
 DATABASE TABLESPACES JWRDB\_Production  
 =====

### TOTAL DATABASE SIZE PER TABLESPACE

Date	Tablespace Name	Filesize (Gb)	Usedsize (Gb)	Percentage free
18-10-2014	ABSDATA	15	11	27
	INDX	32	27	16
17-10-2014	ABSDATA	15	11	27
	INDX	32	27	16
16-10-2014	ABSDATA	15	11	27
	INDX	32	27	16
15-10-2014	ABSDATA	15	11	27
	INDX	32	27	16
14-10-2014	ABSDATA	15	11	27
	INDX	32	27	16
13-10-2014	ABSDATA	15	11	27
	INDX	32	26	19
12-10-2014	ABSDATA	15	11	27
	INDX	32	26	19

# Weekly SLA Customer Report

---

Customer     JWR Production  
Database ID   43



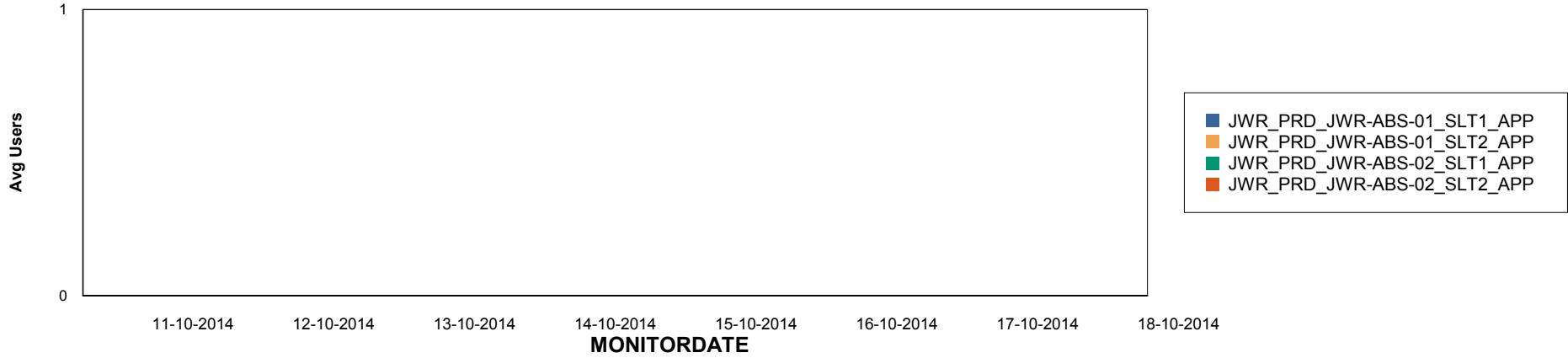
# Weekly SLA Customer Report

Customer JWR Production  
Database ID 43

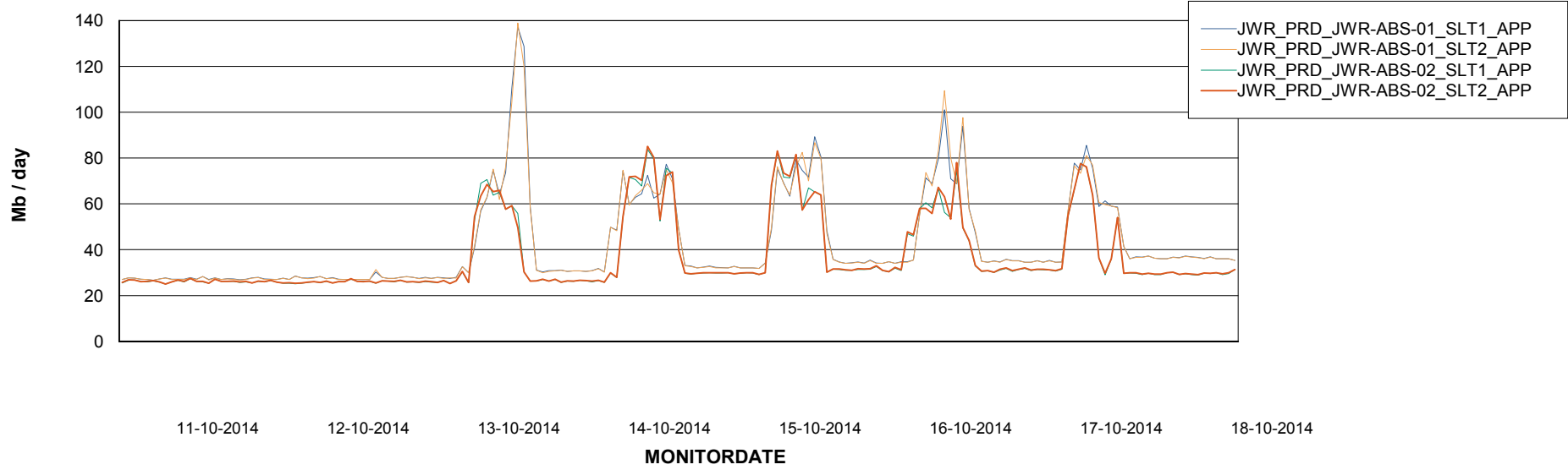


=====  
ABSolute Application Server Services  
=====

## Disaster per ABS Server



## Avg memory used per ABS Server Service



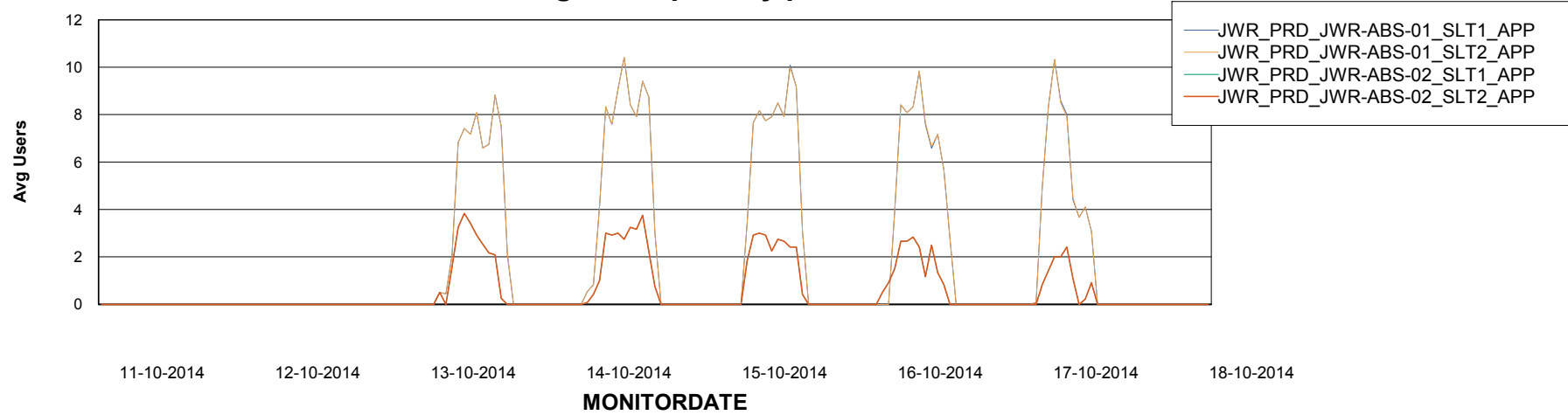
# Weekly SLA Customer Report

Customer JWR Production  
Database ID 43



=====  
ABSolute Application Server Services  
=====

### Avg users per day per ABS server



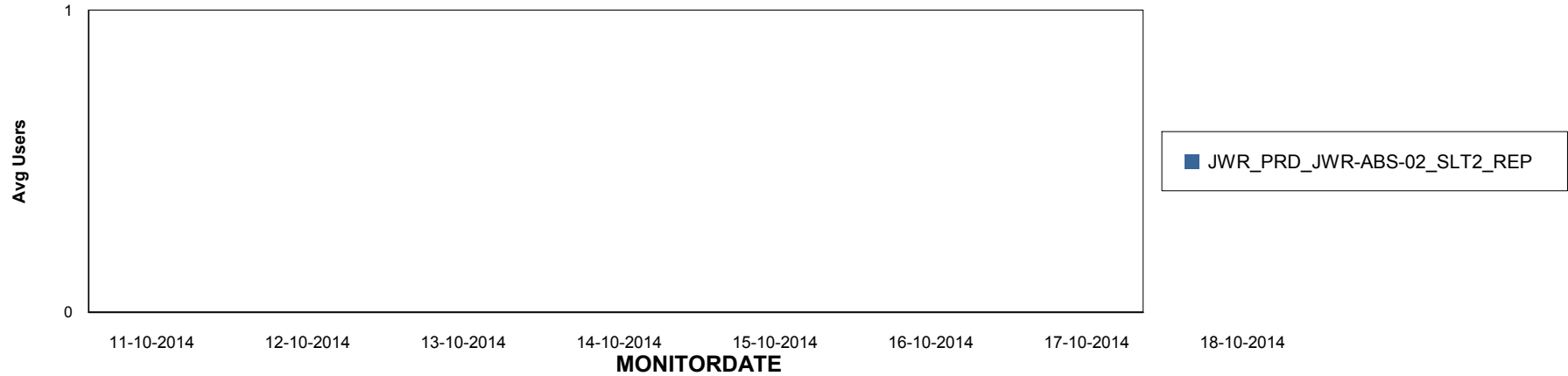
# Weekly SLA Customer Report

Customer JWR Production  
Database ID 43

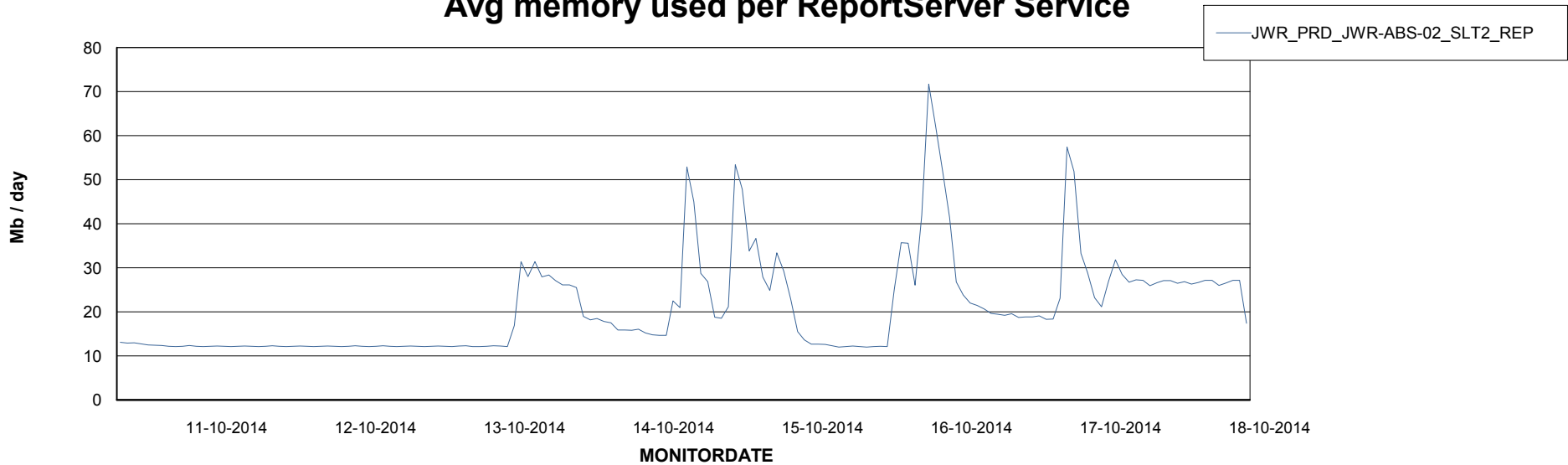


=====  
ABSolute Application ReportServer Services  
=====

## Disaster per ReportServer



## Avg memory used per ReportServer Service



# Weekly SLA Customer Report

Customer JWR Production  
Database ID 43



## Disaster per ABS component

