

Weekly SLA Customer Report

Customer RFL_Production
 Database ID 36



HARDDISK USAGE RFL_PRD_ORACLE1

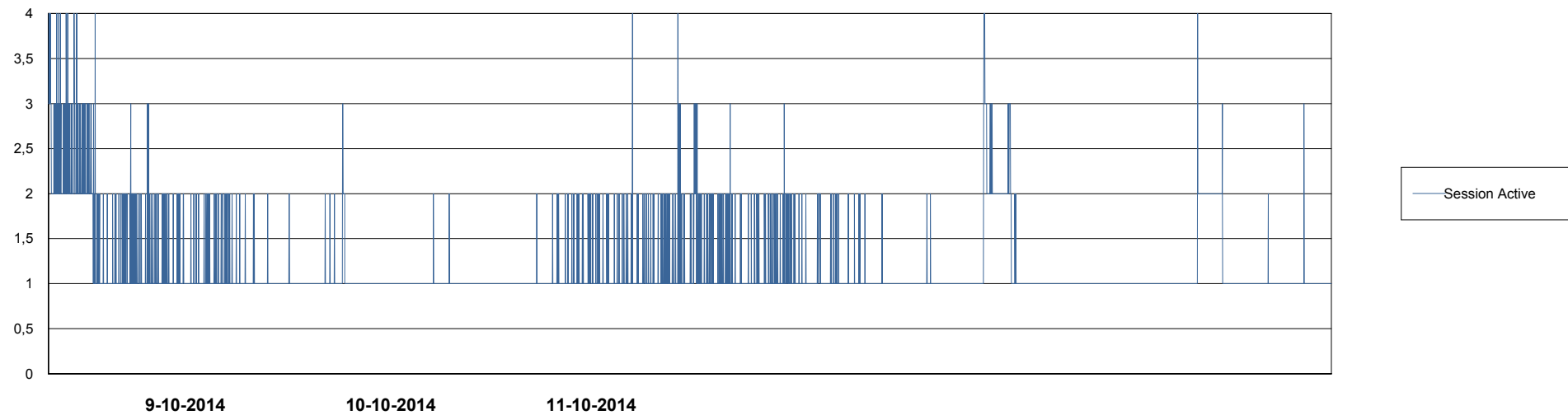
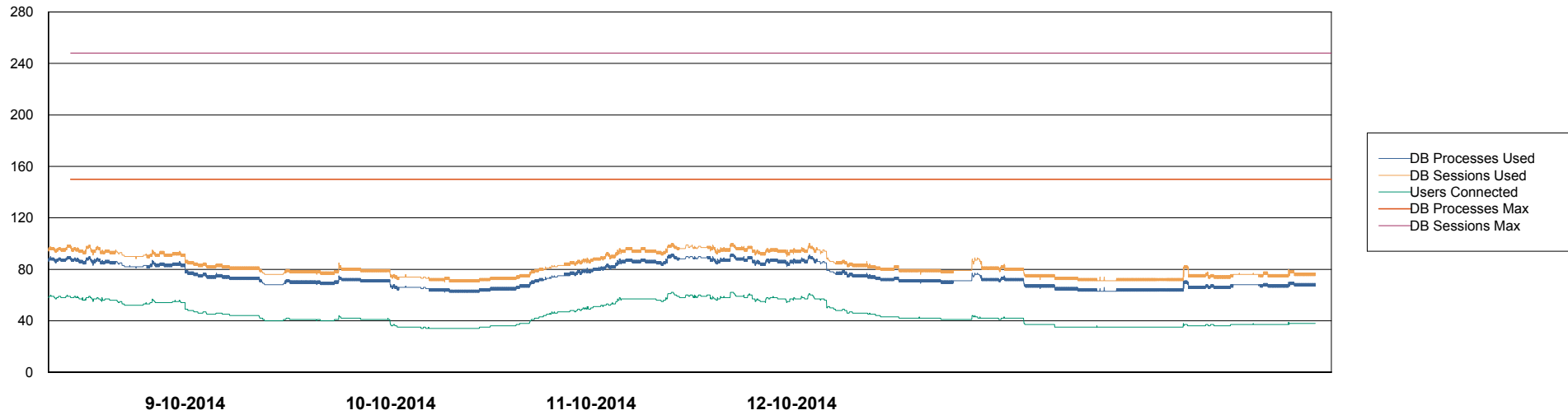
| | Total disk space on C (GB) | Free disk space on C (GB) | Total disk space on D (GB) | Free disk space on D (GB) | Total disk space on E (GB) | Free disk space on E (GB) |
|------------|----------------------------|---------------------------|----------------------------|---------------------------|----------------------------|---------------------------|
| 13-10-2014 | 279 | 0 | 137 | 0 | 137 | 0 |
| 12-10-2014 | 279 | 0 | 137 | 0 | 137 | 0 |
| 11-10-2014 | 279 | 132 | 137 | 100 | 137 | 71 |
| 10-10-2014 | 279 | 132 | 137 | 100 | 137 | 71 |
| 9-10-2014 | 279 | 132 | 137 | 100 | 137 | 72 |
| 8-10-2014 | 279 | 132 | 137 | 100 | 137 | 73 |

Weekly SLA Customer Report

Customer RFL_Production
Database ID 36



DATABASE PERFORMANCE RFLDB_Production

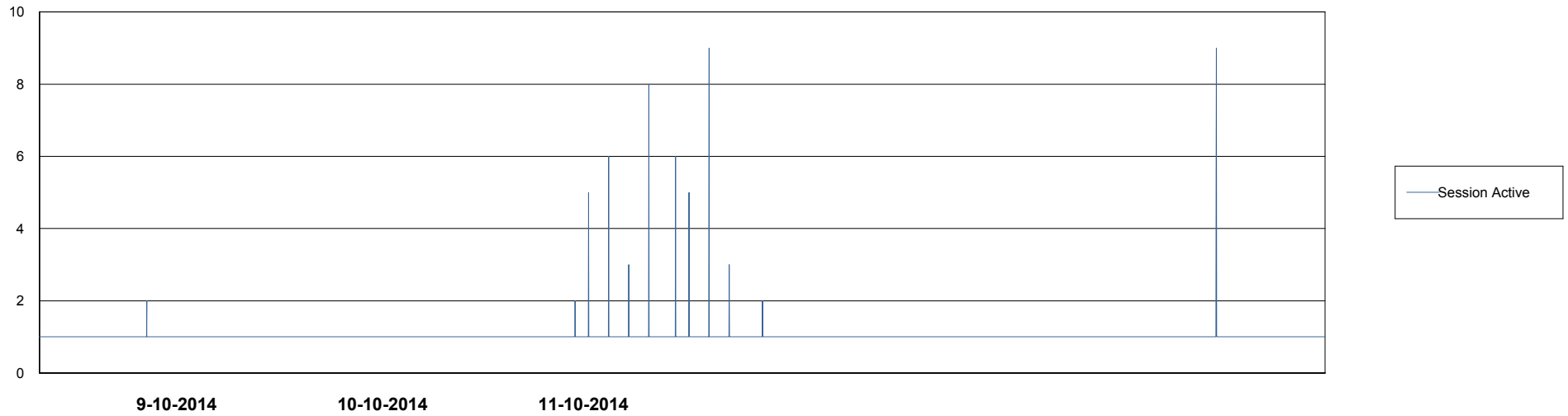
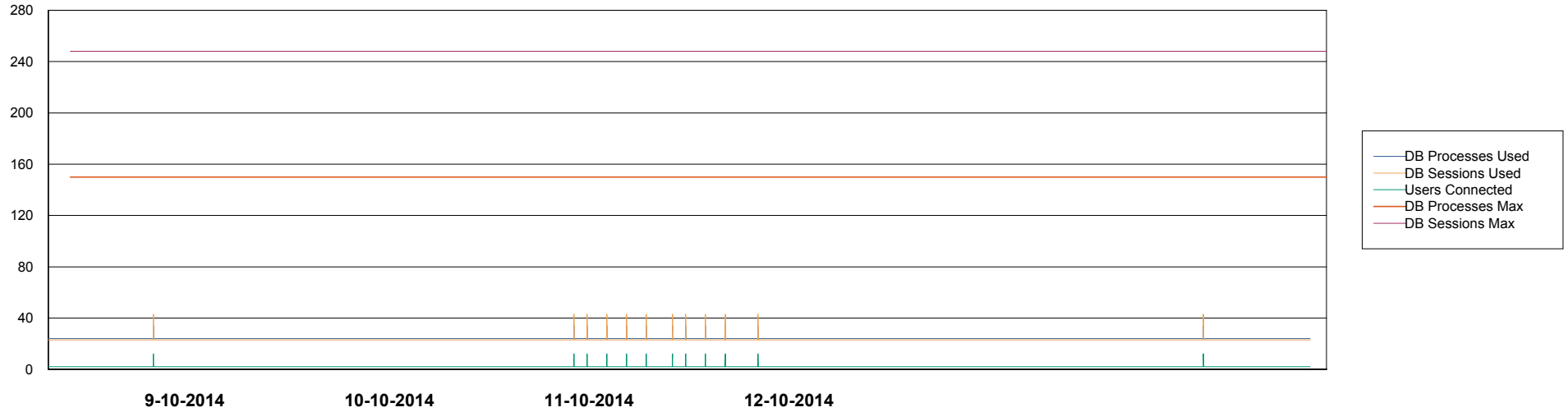


Weekly SLA Customer Report

Customer RFL_Production
Database ID 36



DATABASE PERFORMANCE RFLDB_Standby



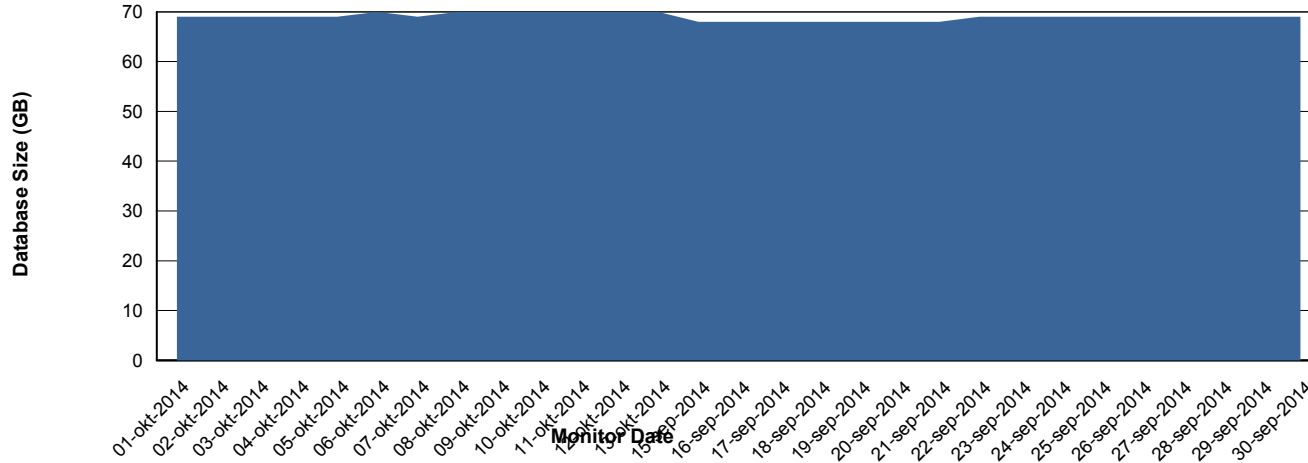
Weekly SLA Customer Report

Customer RFL_Production
 Database ID 36



DATABASE SIZE RFLDB_Production

Database growth over last month



DATABASE TABLESPACES RFLDB_Production

TOTAL DATABASE SIZE PER TABLESPACE

| Date | Tablespace Name | Filesize (Gb) | Usedsize (Gb) | Percentage free |
|------------|-----------------|---------------|---------------|-----------------|
| 13-10-2014 | ABSDATA | 21 | 17 | 19 |
| | INDX | 60 | 52 | 13 |
| 12-10-2014 | ABSDATA | 21 | 17 | 19 |
| | INDX | 60 | 52 | 13 |
| 11-10-2014 | ABSDATA | 21 | 17 | 19 |
| | INDX | 60 | 52 | 13 |
| 10-10-2014 | ABSDATA | 21 | 17 | 19 |
| | INDX | 60 | 52 | 13 |
| 9-10-2014 | ABSDATA | 21 | 17 | 19 |
| | INDX | 60 | 51 | 15 |
| 8-10-2014 | ABSDATA | 21 | 17 | 19 |
| | INDX | 60 | 51 | 15 |

