

# Weekly SLA Customer Report

Customer PCO Production  
 Database ID 44



HARDDISK USAGE PCO\_PRD\_ORACLE1

	Total disk space on C (GB)	Free disk space on C (GB)	Total disk space on D (GB)	Free disk space on D (GB)
12-10-2014	279	0	838	0
11-10-2014	279	218	838	138
10-10-2014	279	218	838	140
9-10-2014	279	218	838	143
8-10-2014	279	218	838	145

HARDDISK USAGE PCO\_PRD\_ORACLE2

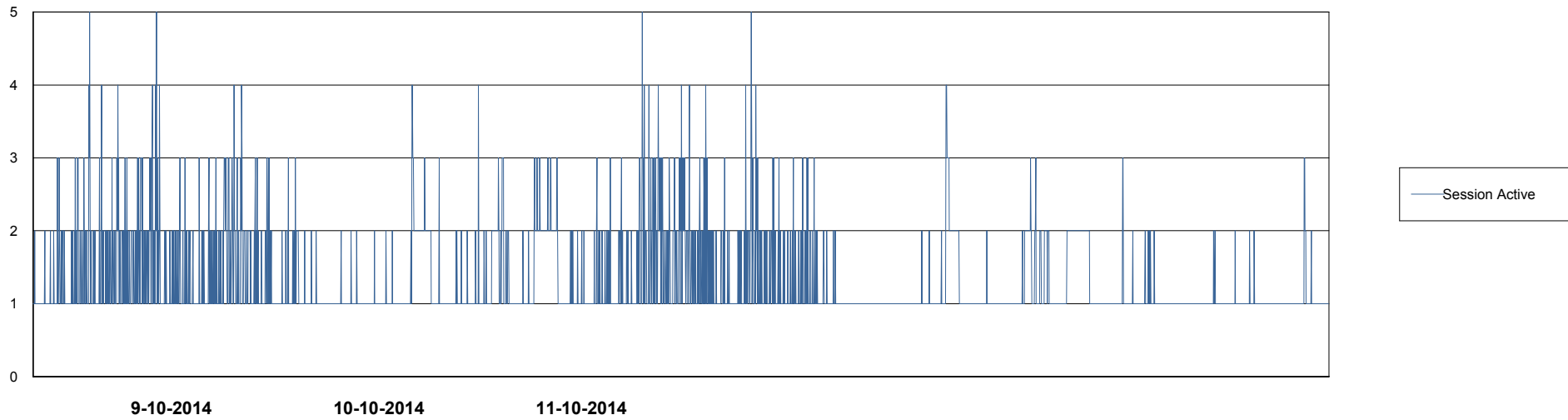
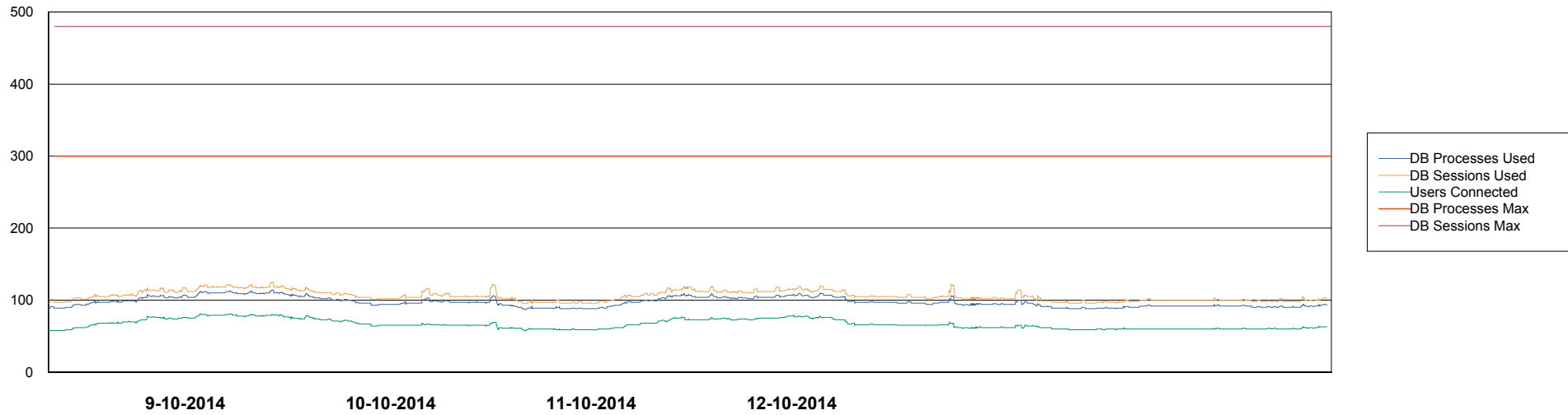
	Total disk space on C (GB)	Free disk space on C (GB)	Total disk space on D (GB)	Free disk space on D (GB)
12-10-2014	279	0	838	0
11-10-2014	279	224	838	556
10-10-2014	279	224	838	558
9-10-2014	279	224	838	561
8-10-2014	279	224	838	564

# Weekly SLA Customer Report

Customer PCO Production  
Database ID 44



## DATABASE PERFORMANCE PCODB\_Production

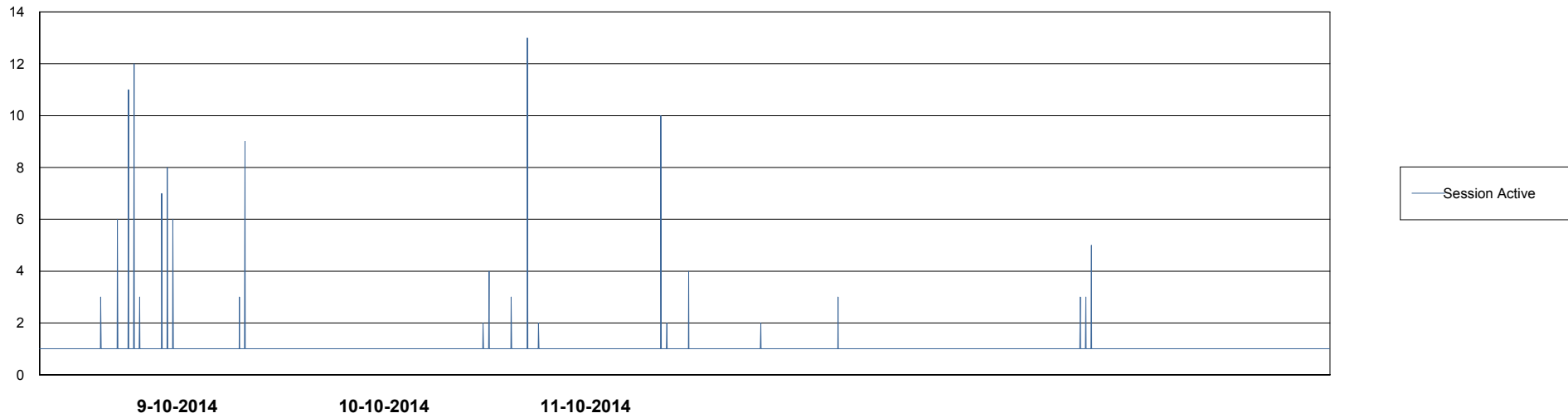
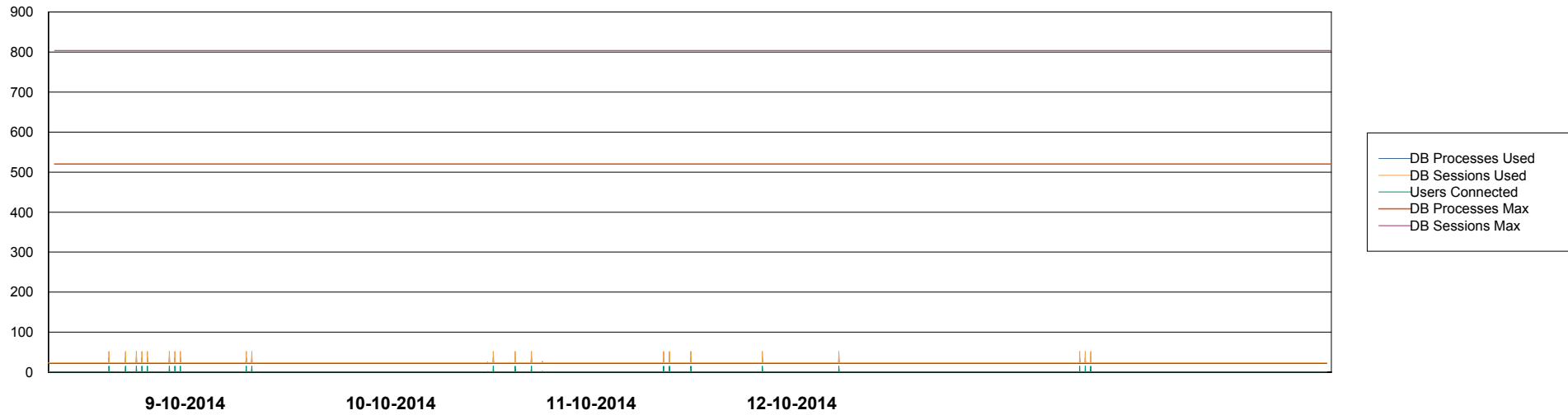


# Weekly SLA Customer Report

Customer PCO Production  
Database ID 44



## DATABASE PERFORMANCE PCODB\_Standby



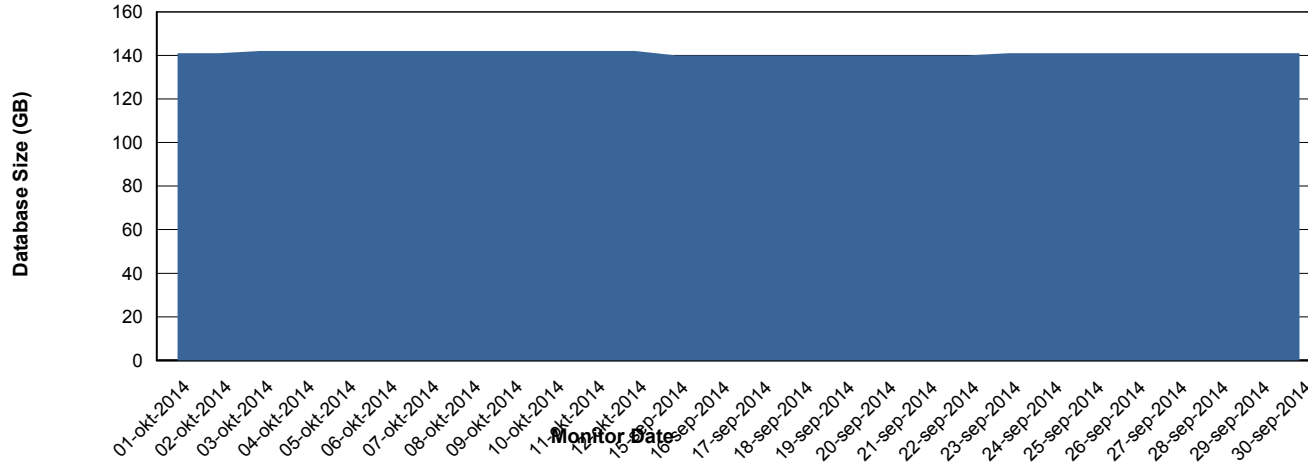
# Weekly SLA Customer Report

Customer PCO Production  
 Database ID 44



DATABASE SIZE PCODB\_Production

## Database growth over last month



DATABASE TABLESPACES PCODB\_Production

### TOTAL DATABASE SIZE PER TABLESPACE

Date	Tablespace Name	Filesize (Gb)	Usedsize (Gb)	Percentage free
12-10-2014	ABSDATA	72	58	19
	INDX	99	79	20
11-10-2014	ABSDATA	72	58	19
	INDX	99	79	20
10-10-2014	ABSDATA	72	58	19
	INDX	99	79	20
9-10-2014	ABSDATA	72	58	19
	INDX	99	79	20
8-10-2014	ABSDATA	72	58	19
	INDX	99	79	20

# Weekly SLA Customer Report

Customer PCO Production  
Database ID 44



STANDBY DATABASE HEALTH PCO Production

### Recovery lag for last 7 days

