

Weekly SLA Customer Report

Customer NIX_Production
 Database ID 51



HARDDISK USAGE NIX_PRD_ABSAPP1

	Total disk space on C (GB)	Free disk space on C (GB)
11-10-2014	136	86
10-10-2014	136	86
9-10-2014	136	86
8-10-2014	136	86

HARDDISK USAGE NIX_PRD_ABSWEB1

	Total disk space on C (GB)	Free disk space on C (GB)
11-10-2014	930	731
10-10-2014	930	731
9-10-2014	930	731
8-10-2014	930	731

HARDDISK USAGE NIX_PRD_ORACLE_B11

	Total disk space on C (GB)	Free disk space on C (GB)	Total disk space on D (GB)	Free disk space on D (GB)	Total disk space on E (GB)	Free disk space on E (GB)
11-10-2014	40	6	279	180	236	169
10-10-2014	40	6	279	180	236	169
9-10-2014	40	6	279	180	236	169

Weekly SLA Customer Report

Customer NIX_Production
 Database ID 51



	Total disk space on C (GB)	Free disk space on C (GB)	Total disk space on D (GB)	Free disk space on D (GB)	Total disk space on E (GB)	Free disk space on E (GB)
8-10-2014	40	6	279	180	236	169

HARDDISK USAGE NIX_PRD_ORCDB1

	Total disk space on C (GB)	Free disk space on C (GB)	Total disk space on D (GB)	Free disk space on D (GB)	Total disk space on E (GB)	Free disk space on E (GB)
11-10-2014	136	21	136	35	136	99
10-10-2014	136	21	136	35	136	100
9-10-2014	136	22	136	35	136	100
8-10-2014	136	22	136	35	136	100

HARDDISK USAGE NIX_PRD_ORCDB2

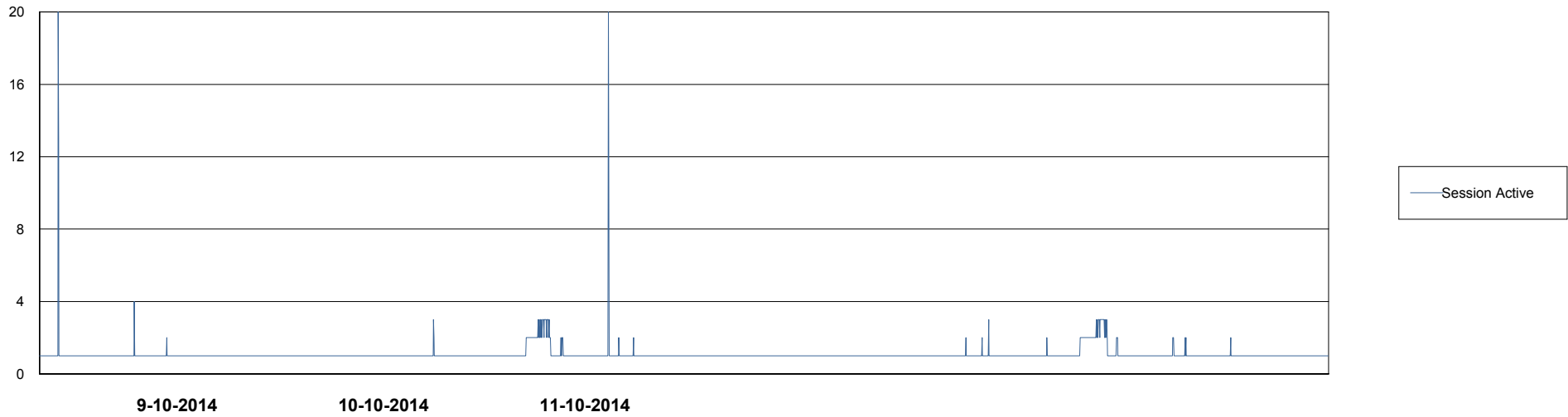
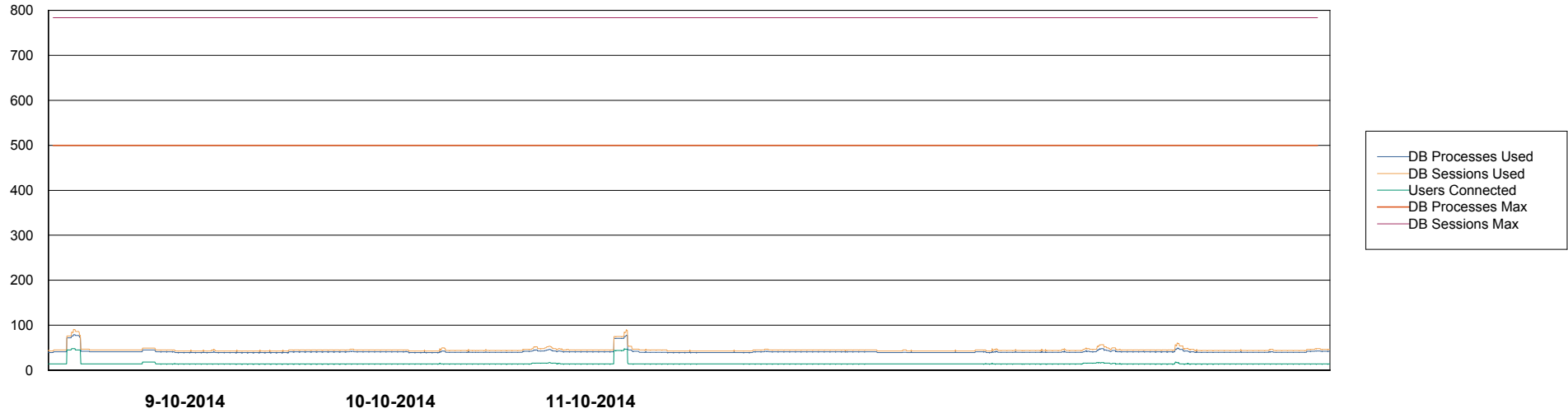
	Total disk space on C (GB)	Free disk space on C (GB)	Total disk space on D (GB)	Free disk space on D (GB)	Total disk space on E (GB)	Free disk space on E (GB)
11-10-2014	279	46	279	48	279	151
10-10-2014	279	47	279	48	279	170
9-10-2014	279	48	279	48	279	163
8-10-2014	279	48	279	48	279	165

Weekly SLA Customer Report

Customer NIX_Production
Database ID 51



DATABASE PERFORMANCE NIXDB_BI

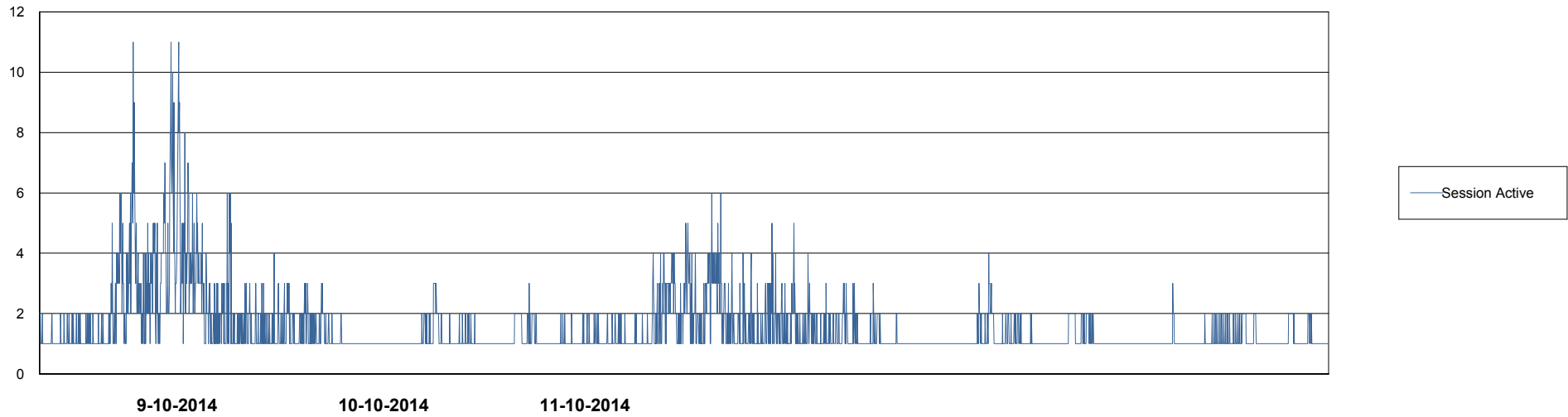
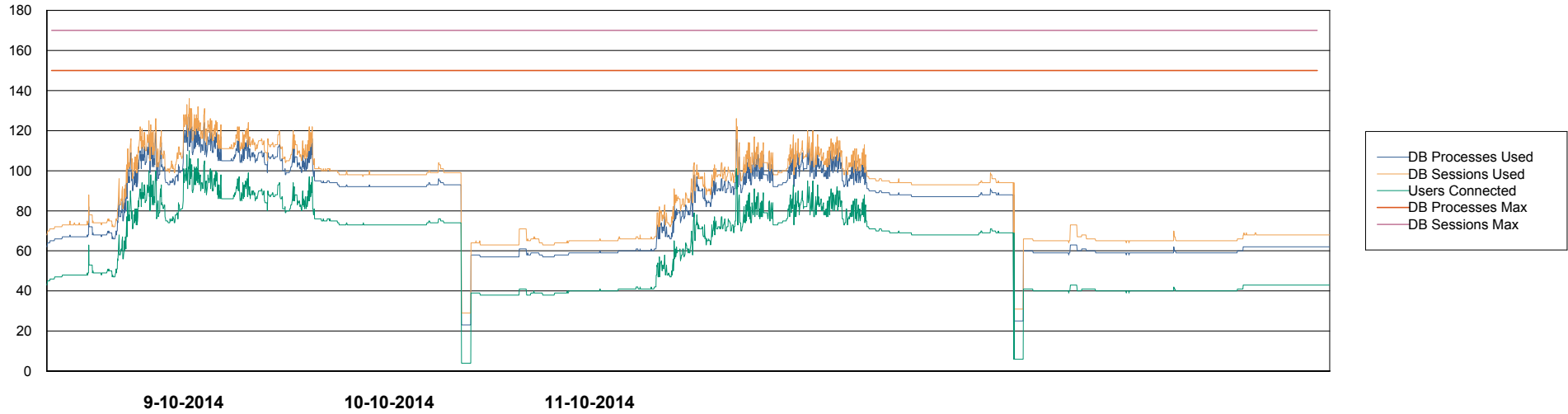


Weekly SLA Customer Report

Customer NIX_Production
Database ID 51



DATABASE PERFORMANCE NIXDB_Production

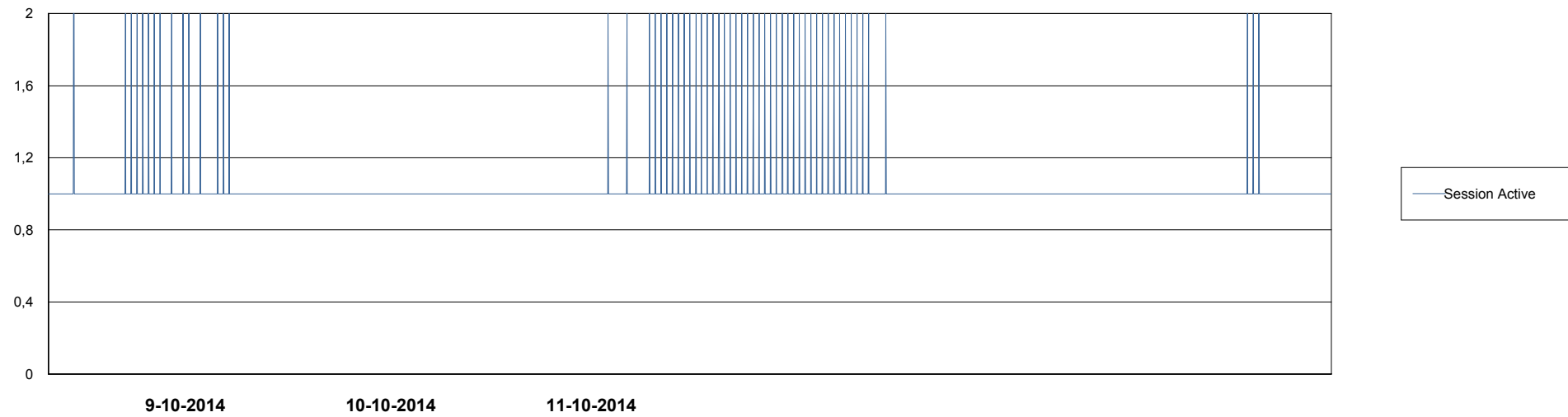
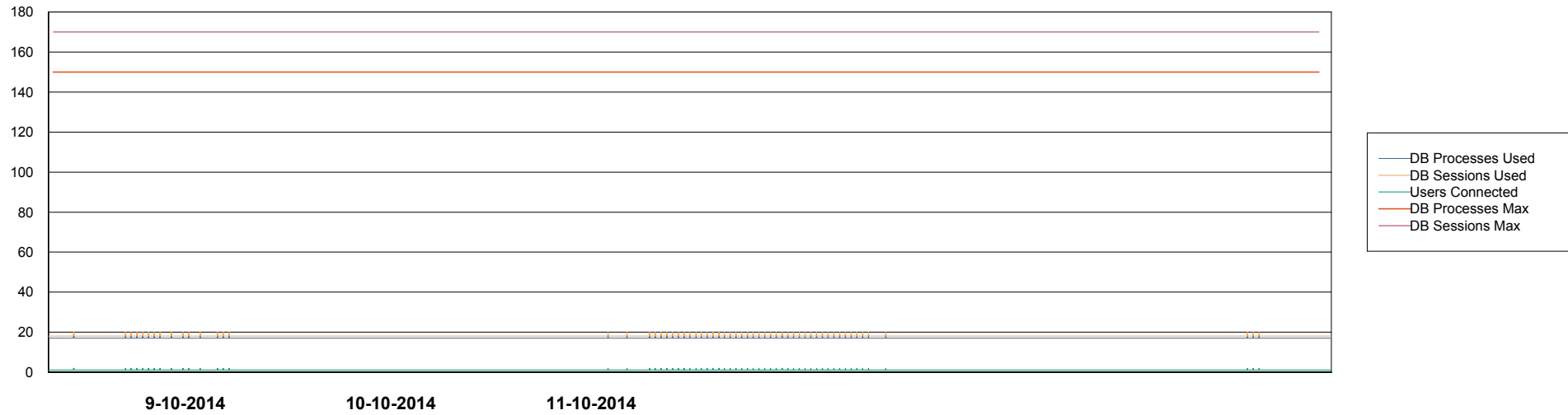


Weekly SLA Customer Report

Customer NIX_Production
Database ID 51



DATABASE PERFORMANCE NIXDB_Standby



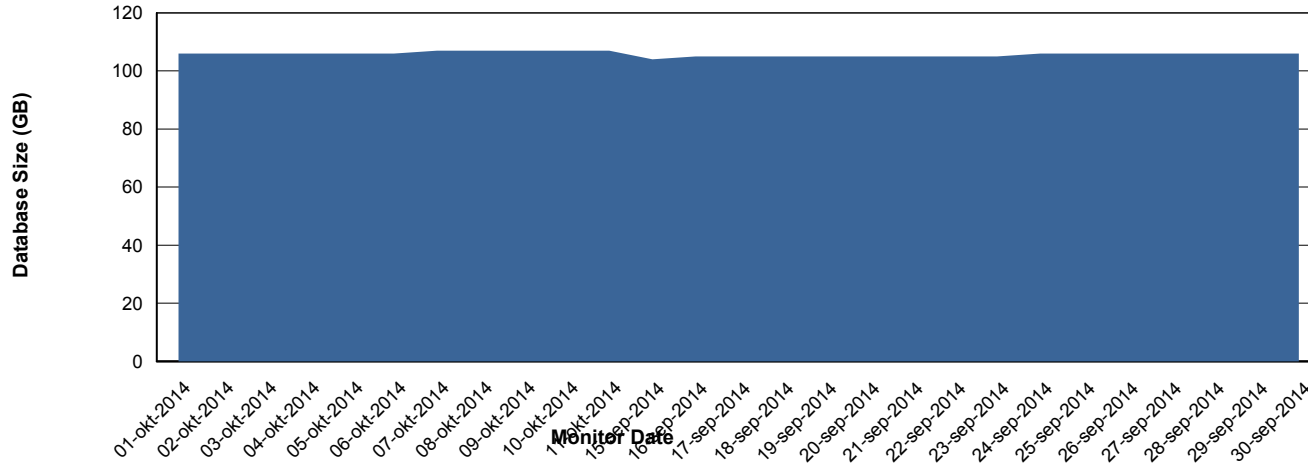
Weekly SLA Customer Report

Customer NIX_Production
Database ID 51



DATABASE SIZE NIXDB_Production

Database growth over last month



Weekly SLA Customer Report

Customer NIX_Production
 Database ID 51



=====
 DATABASE TABLESPACES NIXDB_BI
 =====

TOTAL DATABASE SIZE PER TABLESPACE

Date	Tablespace Name	Filesize (Gb)	Usedsize (Gb)	Percentage free
11-10-2014	ABSDATA	20	17	15
	INDX	40	27	33
10-10-2014	ABSDATA	20	17	15
	INDX	40	27	33
9-10-2014	ABSDATA	20	17	15
	INDX	40	27	33
8-10-2014	ABSDATA	20	17	15
	INDX	40	27	33

Weekly SLA Customer Report

Customer NIX_Production
 Database ID 51



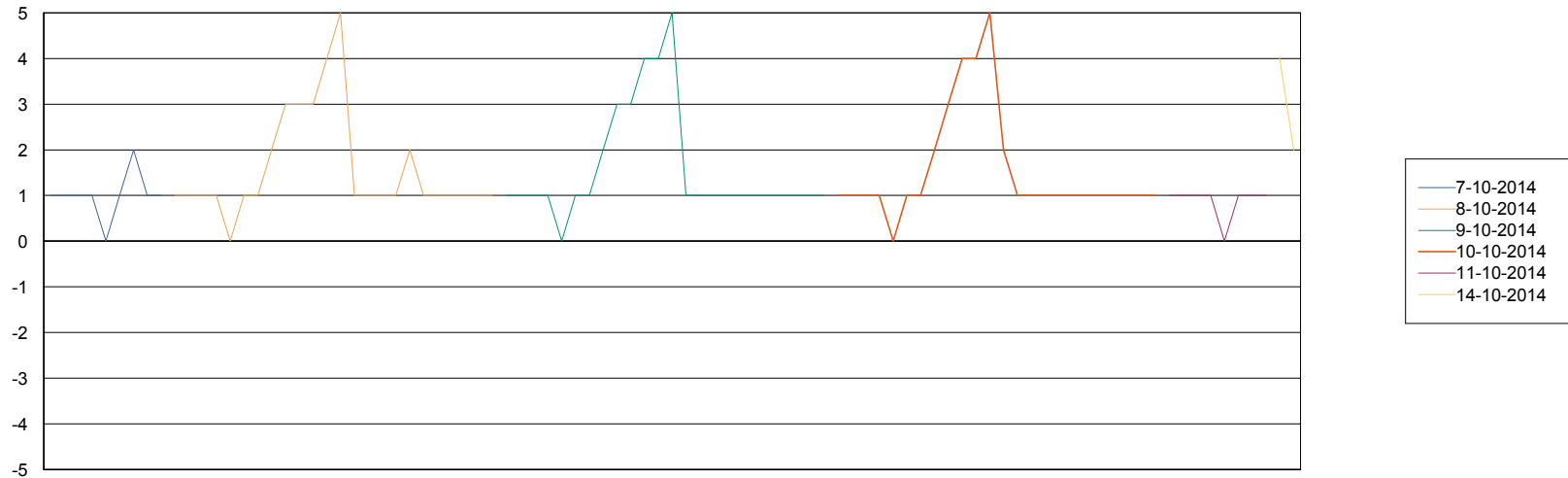
DATABASE TABLESPACES NIXDB_Production

TOTAL DATABASE SIZE PER TABLESPACE

Date	Tablespace Name	Filesize (Gb)	Usedsize (Gb)	Percentage free
11-10-2014	ABSDATA	40	28	30
	INDX	97	76	22
10-10-2014	ABSDATA	40	28	30
	INDX	97	76	22
9-10-2014	ABSDATA	40	28	30
	INDX	97	76	22
8-10-2014	ABSDATA	40	28	30
	INDX	97	76	22

STANDBY DATABASE HEALTH NIX_Production

Recovery lag for last 7 days



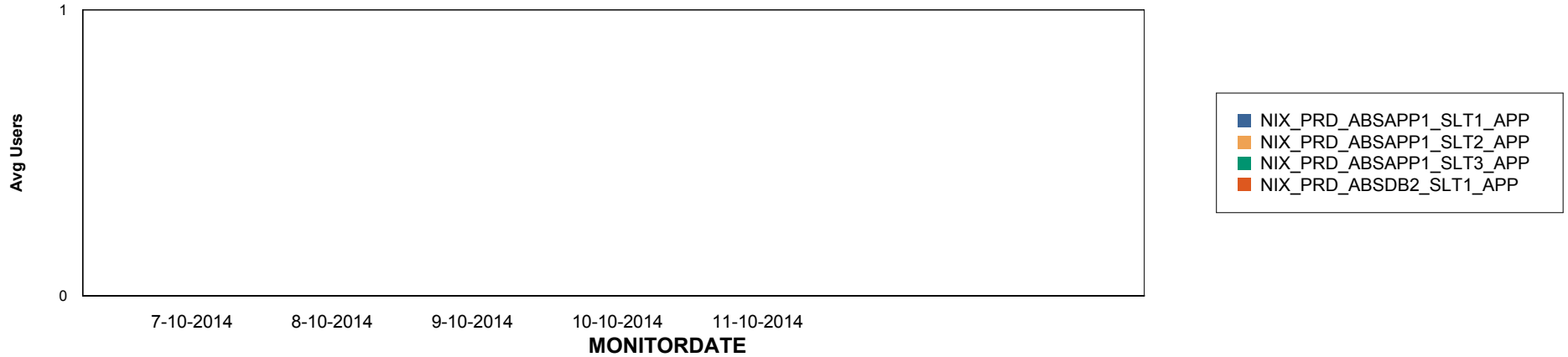
Weekly SLA Customer Report

Customer NIX_Production
Database ID 51

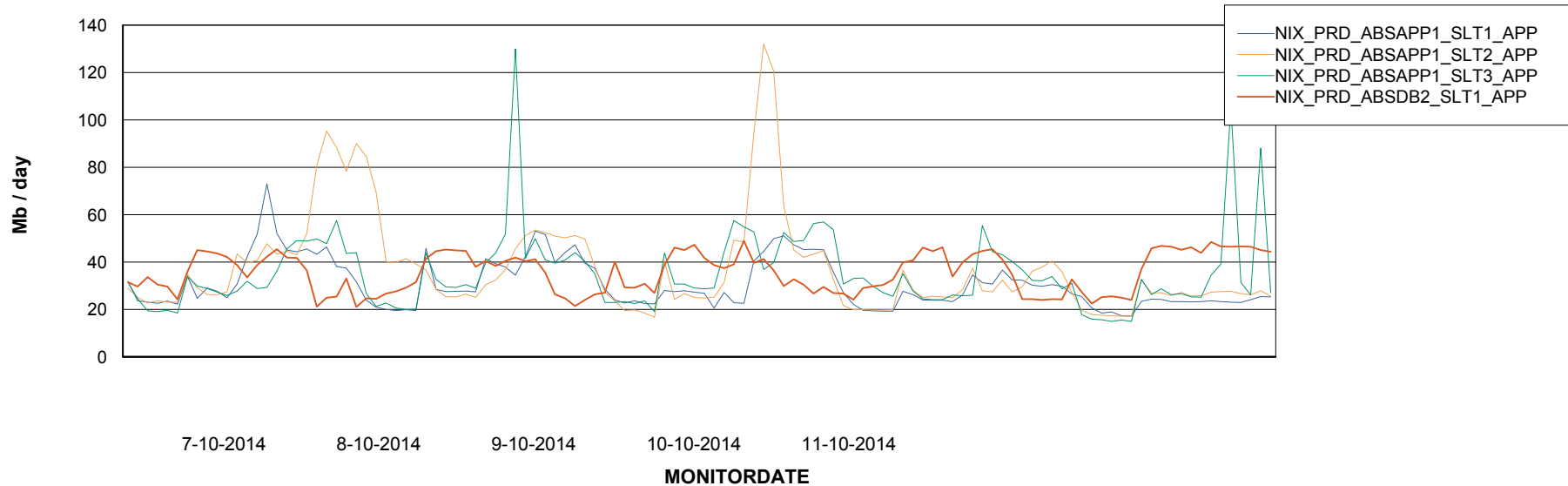


ABSolute Application Server Services

Disaster per ABS Server



Avg memory used per ABS Server Service



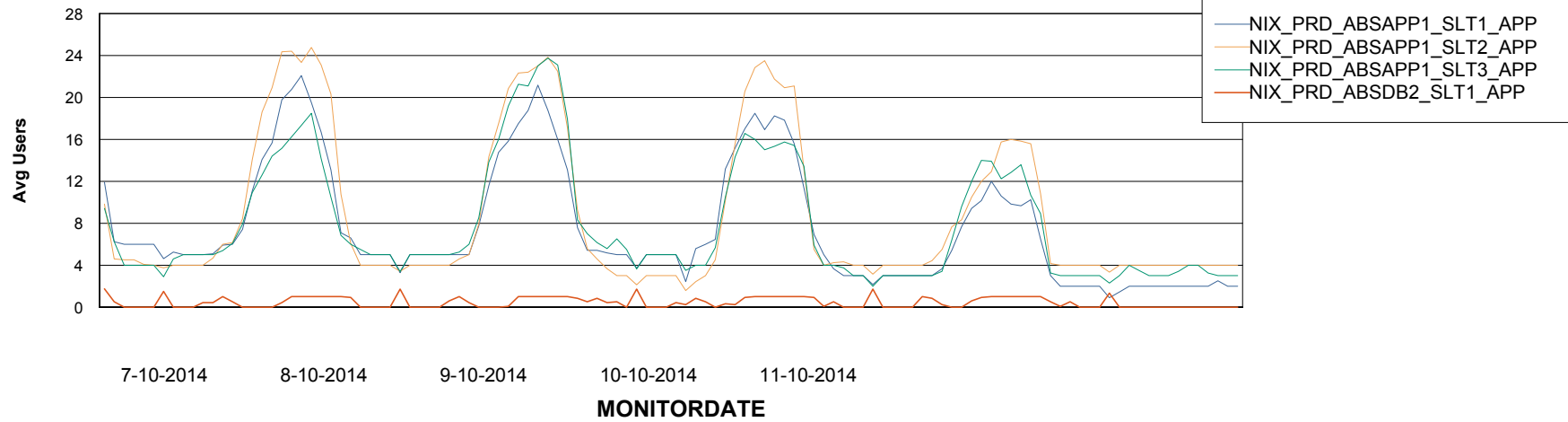
Weekly SLA Customer Report

Customer NIX_Production
Database ID 51



ABSolute Application Server Services

Avg users per day per ABS server



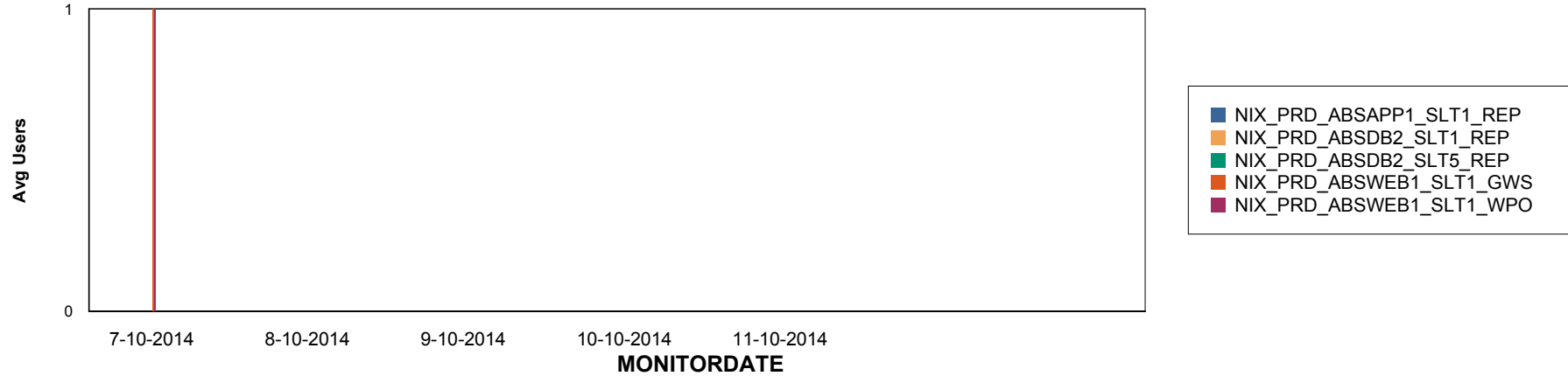
Weekly SLA Customer Report

Customer NIX_Production
Database ID 51

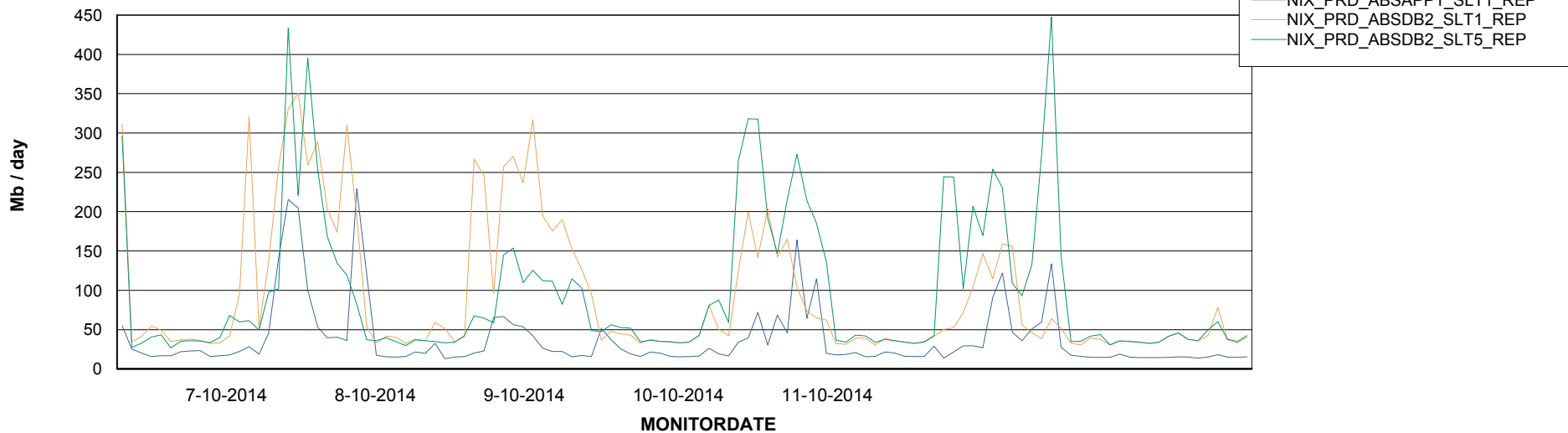


ABSolute Application ReportServer Services

Disaster per ReportServer



Avg memory used per ReportServer Service



Weekly SLA Customer Report

Customer NIX_Production
Database ID 51



Disaster per ABS component

