

Weekly SLA Customer Report

Customer FIS_Production
 Database ID 46



HARDDISK USAGE FIS_PRD_ORACLE1

	Total disk space on C (GB)	Free disk space on C (GB)	Total disk space on L (GB)	Free disk space on L (GB)	Total disk space on O (GB)	Free disk space on O (GB)
11-10-2014	279	240	279	82	186	54
10-10-2014	279	241	279	83	186	54
9-10-2014	279	241	279	84	186	54
8-10-2014	279	241	279	86	186	54

HARDDISK USAGE FIS_PRD_ORACLE2

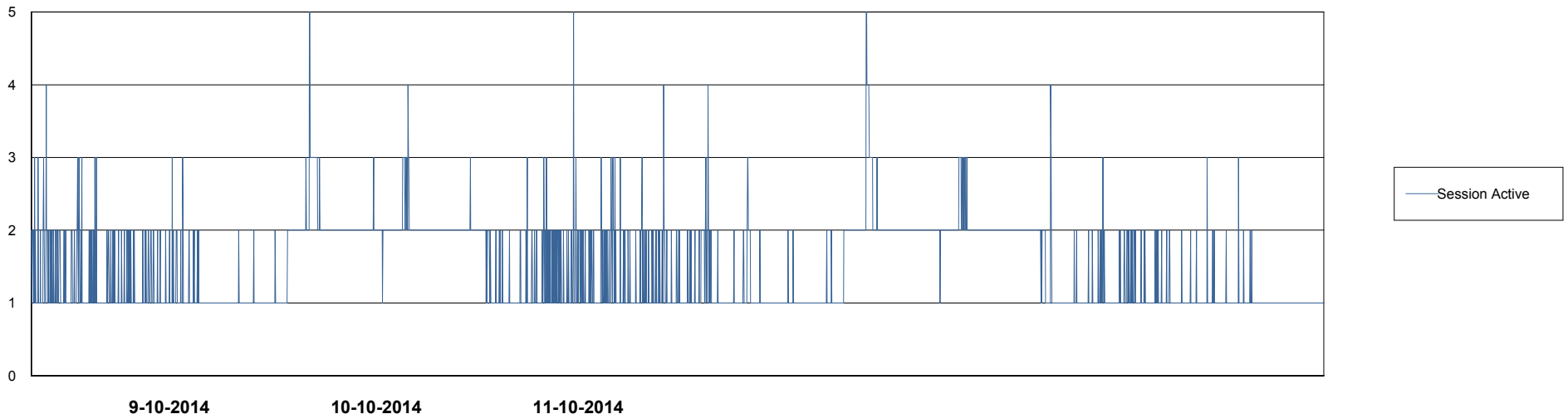
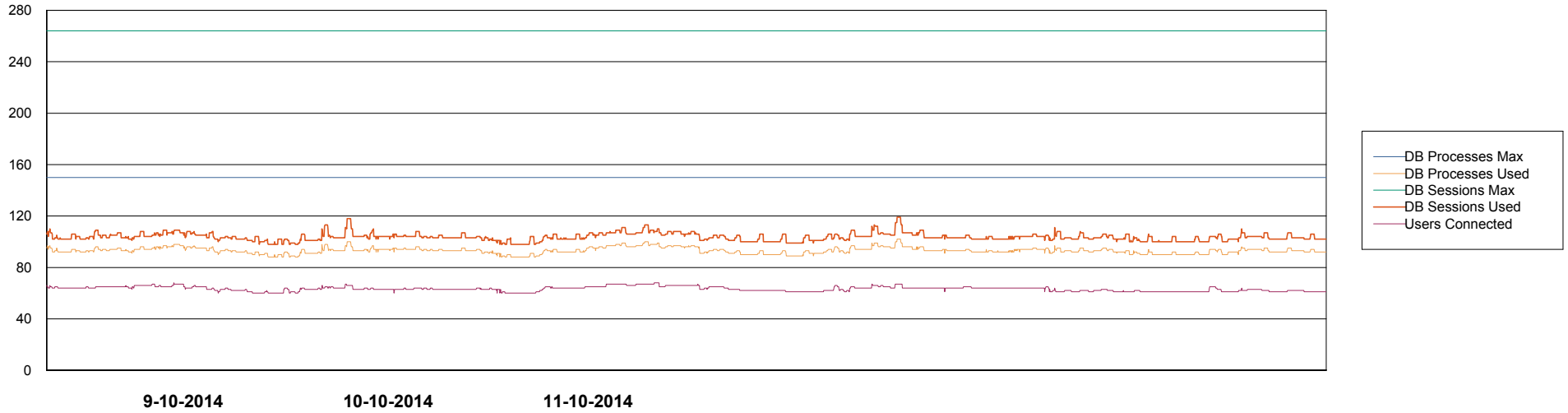
	Total disk space on C (GB)	Free disk space on C (GB)	Total disk space on L (GB)	Free disk space on L (GB)	Total disk space on O (GB)	Free disk space on O (GB)
11-10-2014	279	229	279	34	186	54
10-10-2014	279	229	279	35	186	54
9-10-2014	279	229	279	37	186	54
8-10-2014	279	229	279	38	186	54

Weekly SLA Customer Report

Customer FIS_Production
Database ID 46



DATABASE PERFORMANCE FISDB_Production

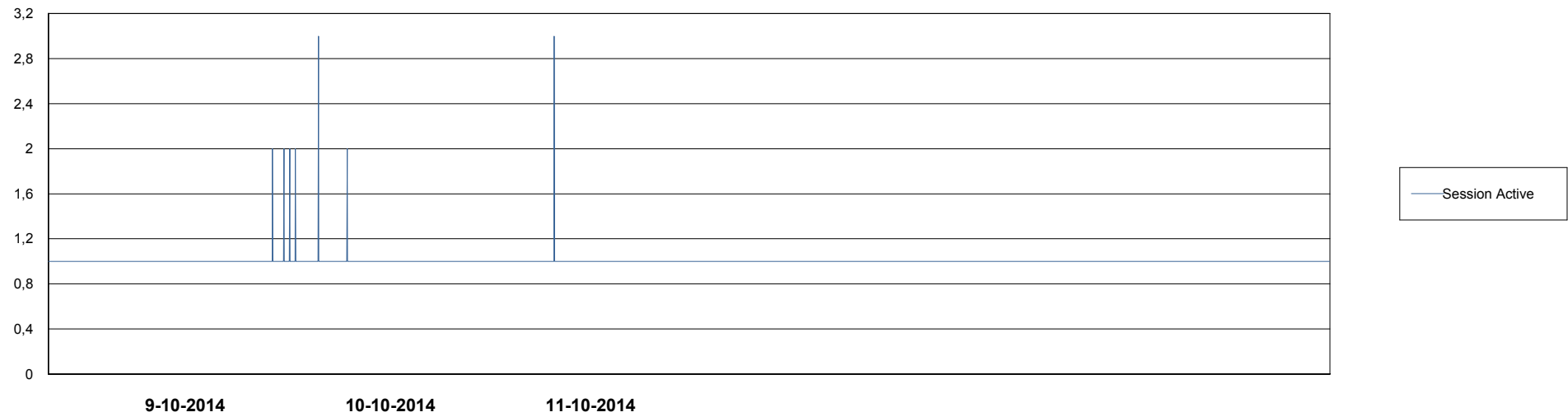
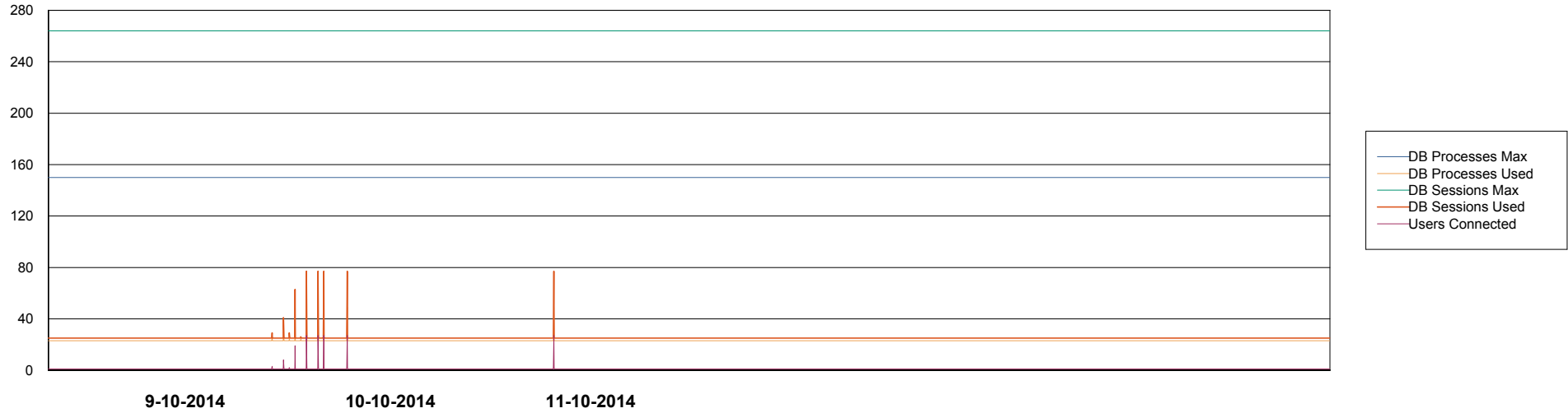


Weekly SLA Customer Report

Customer FIS_Production
Database ID 46



DATABASE PERFORMANCE FISDB_Standby



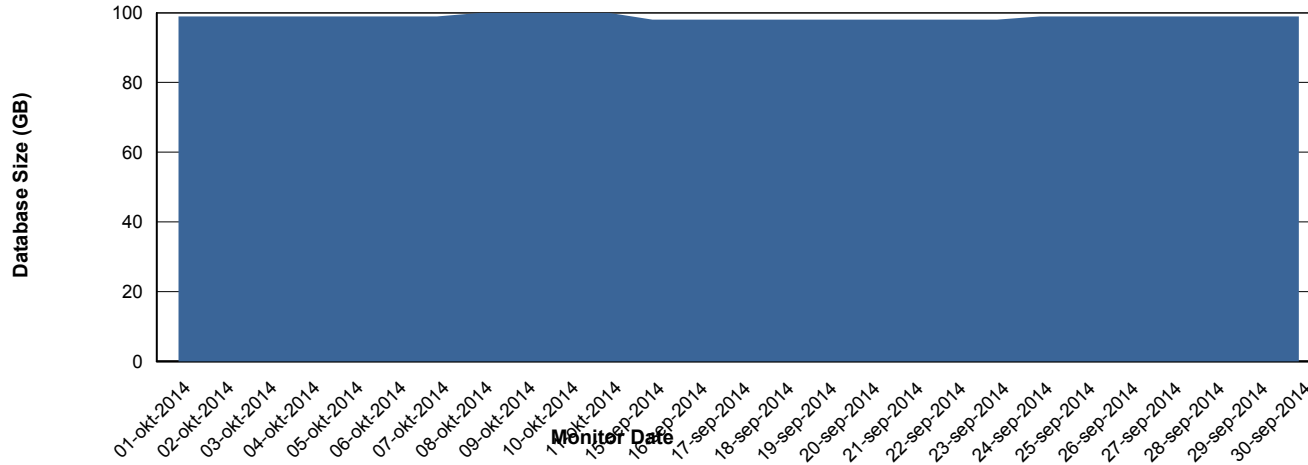
Weekly SLA Customer Report

Customer FIS_Production
 Database ID 46



=====
 DATABASE SIZE FISDB_Production
 =====

Database growth over last month



=====
 DATABASE TABLESPACES FISDB_Production
 =====

TOTAL DATABASE SIZE PER TABLESPACE

Date	Tablespace Name	Filesize (Gb)	Usedsize (Gb)	Percentage free
11-10-2014	ABSDATA	53	42	21
	INDX	65	54	17
10-10-2014	ABSDATA	53	42	21
	INDX	65	54	17
9-10-2014	ABSDATA	53	42	21
	INDX	65	54	17
8-10-2014	ABSDATA	53	42	21
	INDX	65	54	17

Weekly SLA Customer Report

Customer FIS_Production
Database ID 46



STANDBY DATABASE HEALTH FIS_Production

Recovery lag for last 7 days

