

Weekly SLA Customer Report

Customer BCH Production
 Database ID 28



HARDDISK USAGE BCH_PRD_ORCDB1

	Total disk space on C (GB)	Free disk space on C (GB)	Total disk space on D (GB)	Free disk space on D (GB)
11-10-2014	278	160	278	64
10-10-2014	278	161	278	66
9-10-2014	278	161	278	70
8-10-2014	278	161	278	73

HARDDISK USAGE BCH_PRD_ORCDB2

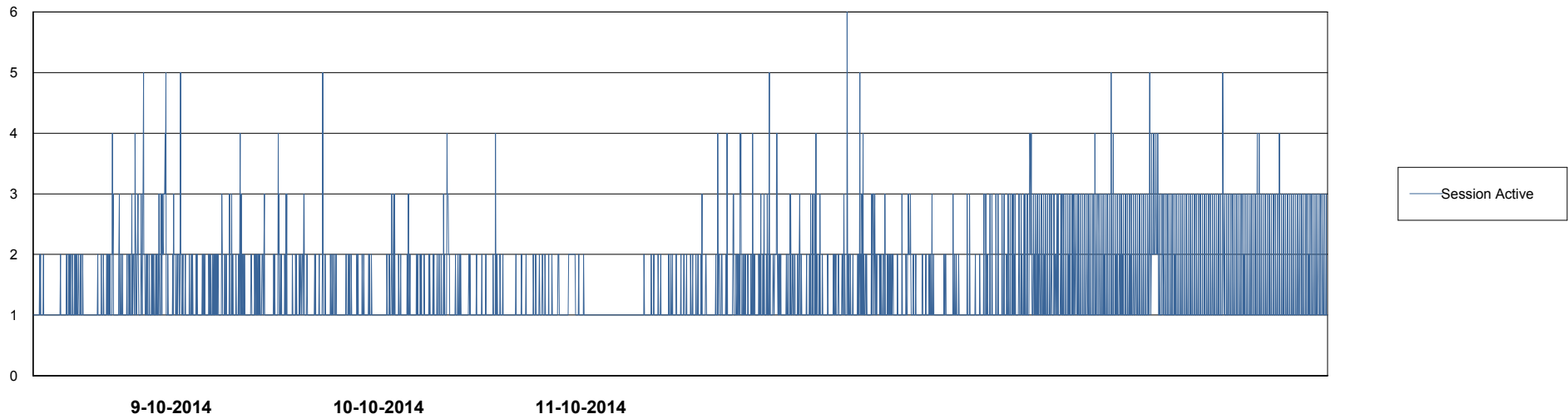
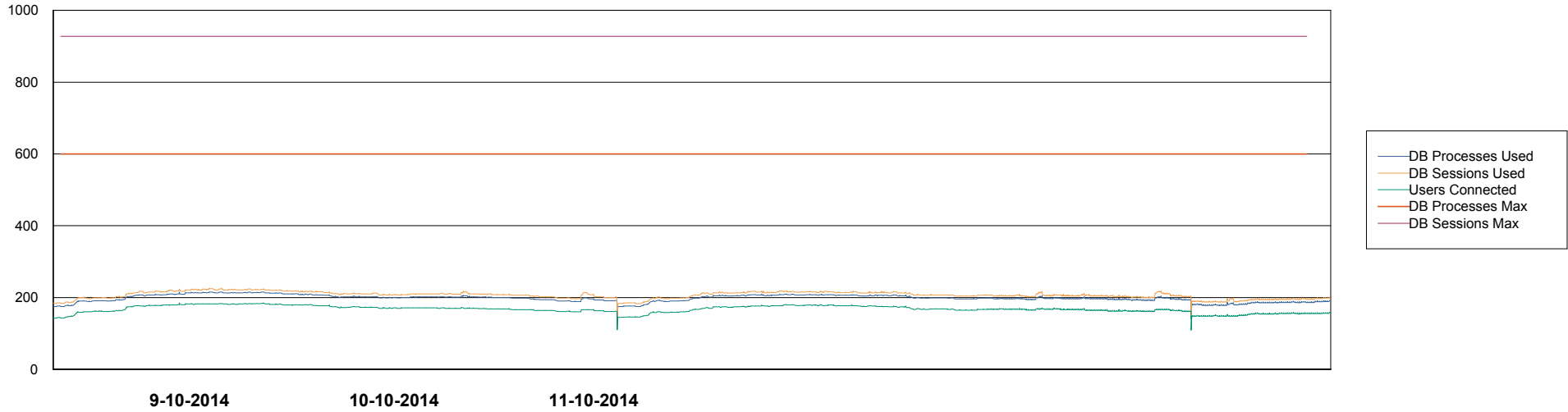
	Total disk space on C (GB)	Free disk space on C (GB)	Total disk space on D (GB)	Free disk space on D (GB)
11-10-2014	278	192	278	61
10-10-2014	278	192	278	63
9-10-2014	278	192	278	67
8-10-2014	278	192	278	70

Weekly SLA Customer Report

Customer BCH Production
Database ID 28



DATABASE PERFORMANCE BCHDB_Production

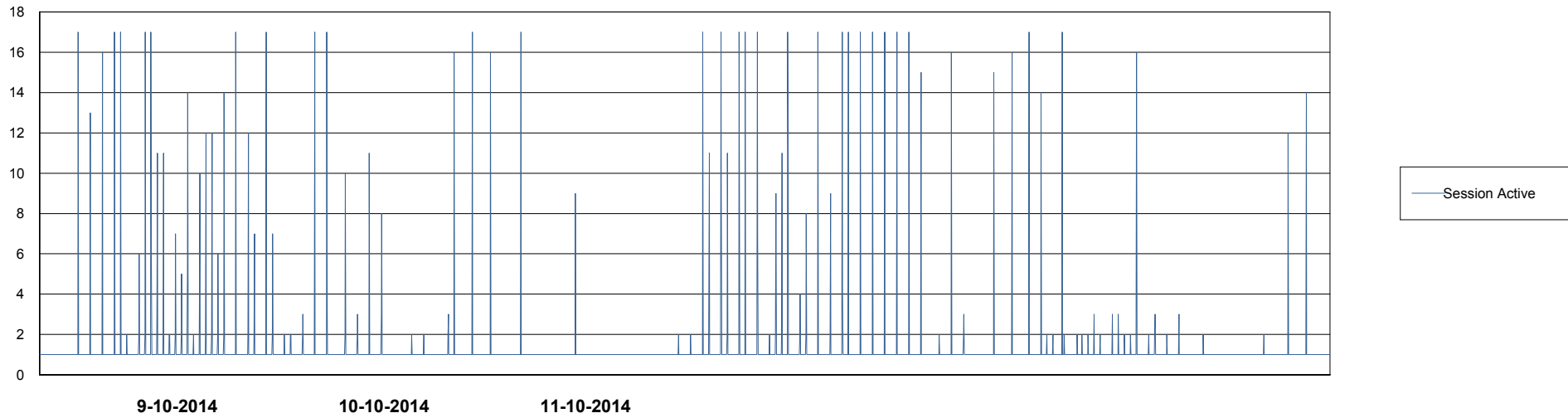
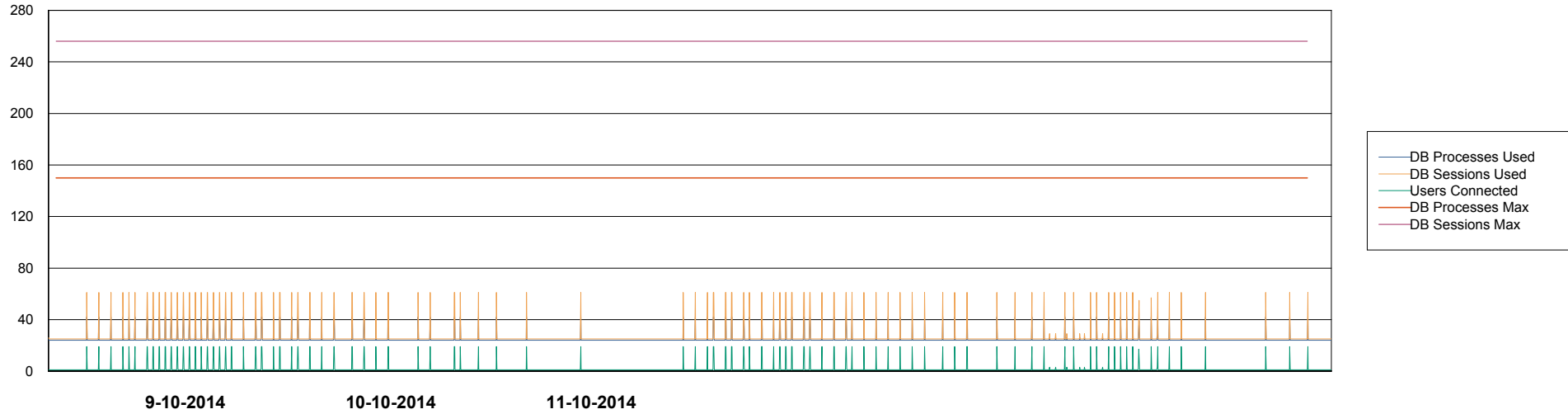


Weekly SLA Customer Report

Customer BCH Production
Database ID 28



DATABASE PERFORMANCE BCHDB_Standby



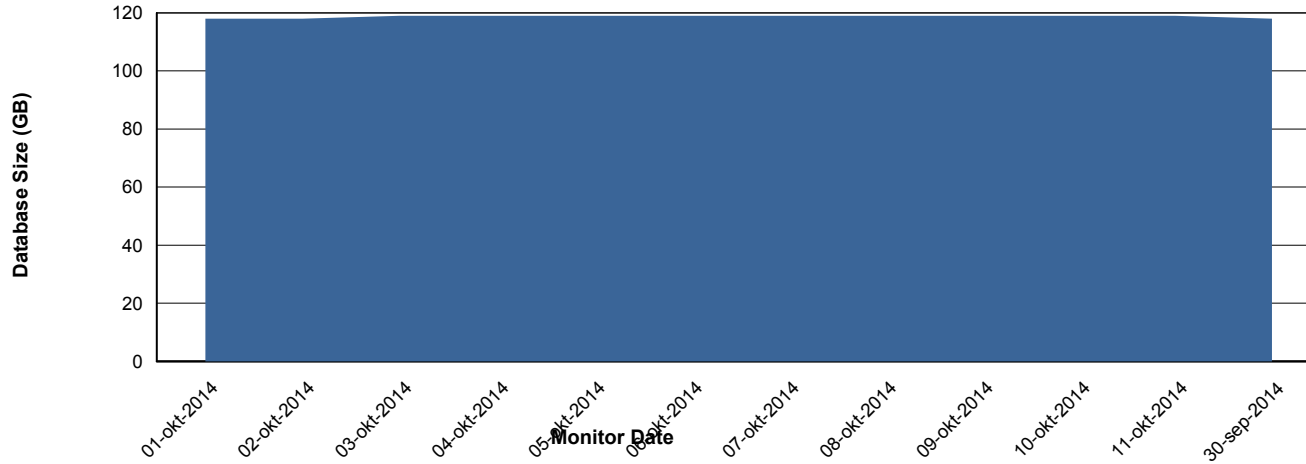
Weekly SLA Customer Report

Customer BCH Production
 Database ID 28



=====
 DATABASE SIZE BCHDB_Production
 =====

Database growth over last month



=====
 DATABASE TABLESPACES BCHDB_Production
 =====

TOTAL DATABASE SIZE PER TABLESPACE

Date	Tablespace Name	Filesize (Gb)	Usedsize (Gb)	Percentage free
11-10-2014	ABSDATA	27	22	19
	INDX	111	95	14
10-10-2014	ABSDATA	27	22	19
	INDX	111	95	14
9-10-2014	ABSDATA	27	22	19
	INDX	111	95	14
8-10-2014	ABSDATA	27	22	19
	INDX	111	95	14

Weekly SLA Customer Report

Customer BCH Production
Database ID 28



STANDBY DATABASE HEALTH BCH Production

Recovery lag for last 7 days

