

Weekly SLA Customer Report

Customer AUJ_Production
 Database ID 41



HARDDISK USAGE AUJDB_BI

	Used disk space on / (GB)	Total disk space on / (GB)
11-10-2014	5	6
10-10-2014	5	6
9-10-2014	5	6
8-10-2014	5	6

HARDDISK USAGE AUJ_PRD_ORACLE1

	Used disk space on \$1 (GB)	Total disk space on \$1 (GB)	Free disk space on \$1 (GB)
11-10-2014	113	290	67
10-10-2014	118	290	67
9-10-2014	131	290	67
8-10-2014	121	291	67

HARDDISK USAGE AUJ_PRD_ORACLE2

	Used disk space on \$1 (GB)	Total disk space on \$1 (GB)	Free disk space on \$1 (GB)
11-10-2014	6	109	98
10-10-2014	6	109	98
9-10-2014	6	109	98

Weekly SLA Customer Report

Customer AUJ_Production
Database ID 41



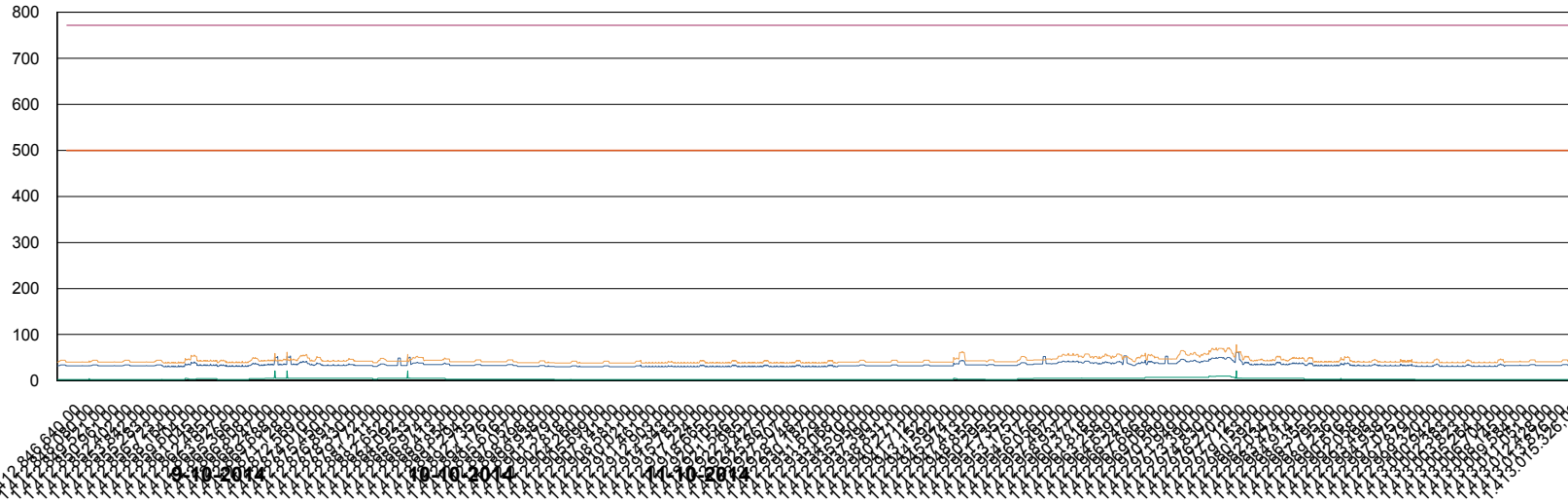
	Used disk space on \$1 (GB)	Total disk space on \$1 (GB)	Free disk space on \$1 (GB)
8-10-2014	6	109	98

Weekly SLA Customer Report

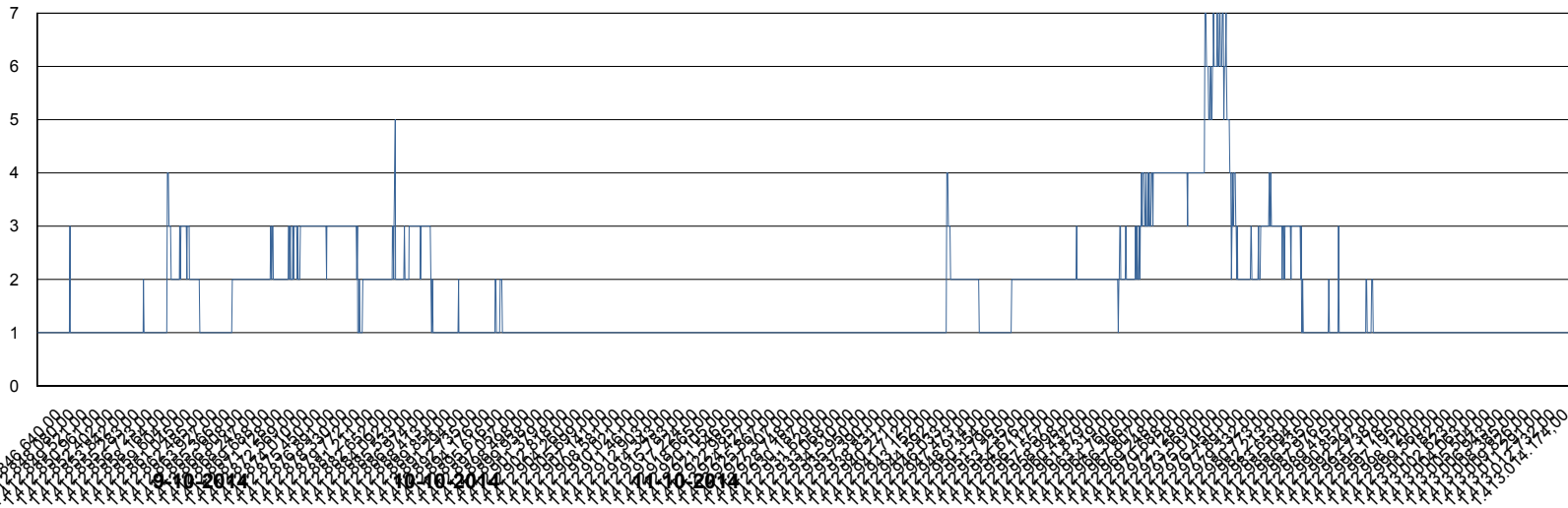
Customer AUJ_Production
Database ID 41



DATABASE PERFORMANCE AUJDB_BI



- DB Processes Used
- DB Sessions Used
- Users Connected
- DB Processes Max
- DB Sessions Max



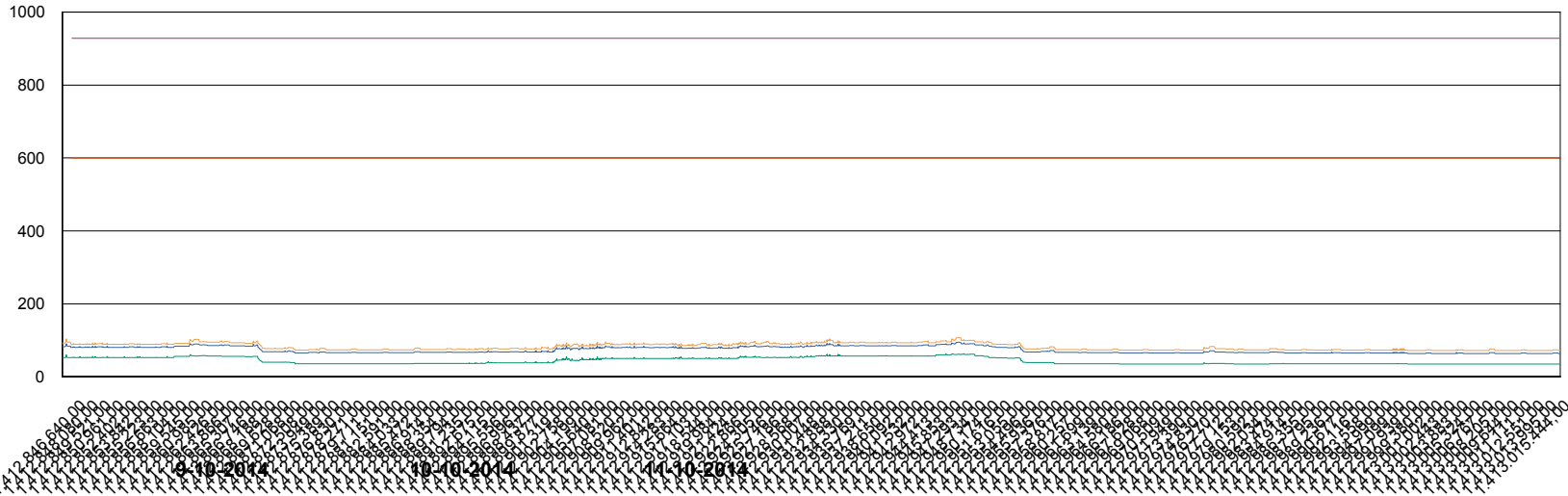
- Session Active

Weekly SLA Customer Report

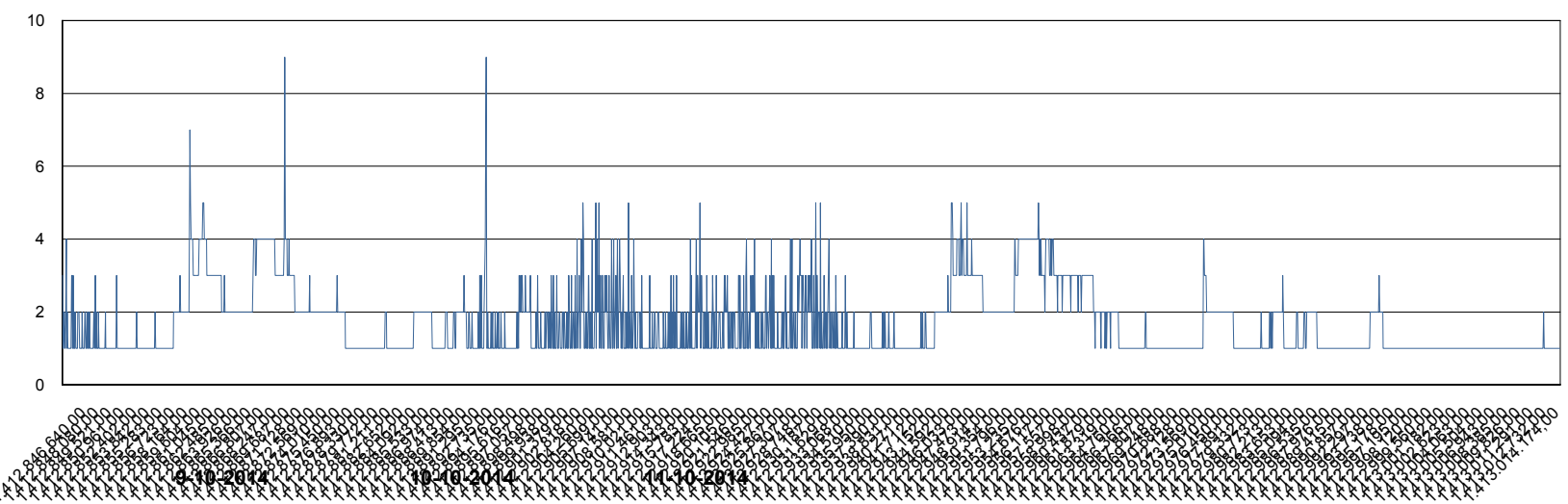
Customer AUJ_Production
Database ID 41



DATABASE PERFORMANCE AUJDB_Production



- DB Processes Used
- DB Sessions Used
- Users Connected
- DB Processes Max
- DB Sessions Max



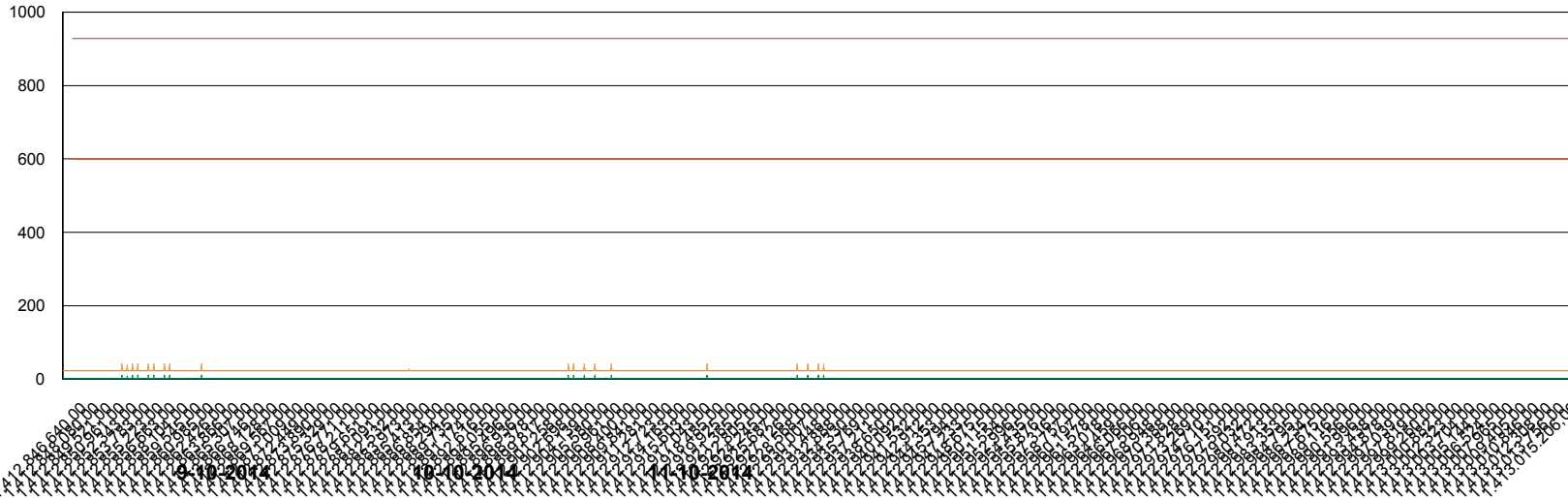
- Session Active

Weekly SLA Customer Report

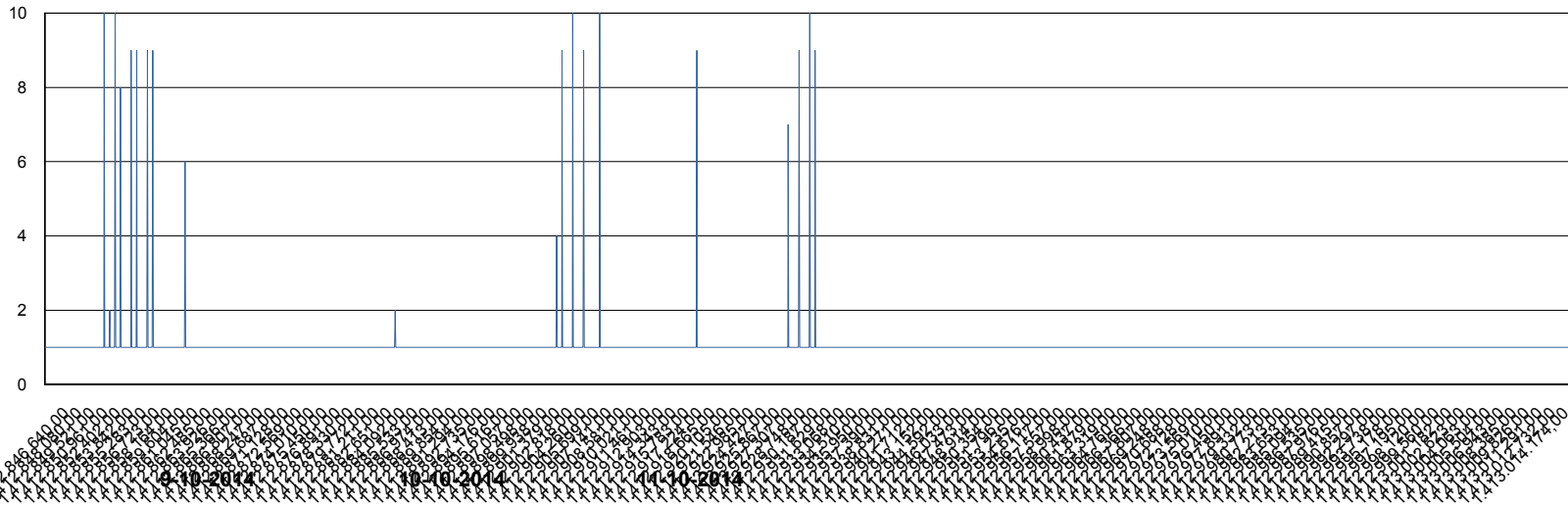
Customer AUJ_Production
Database ID 41



DATABASE PERFORMANCE AUJDB_Standby



- DB Processes Used
- DB Sessions Used
- Users Connected
- DB Processes Max
- DB Sessions Max



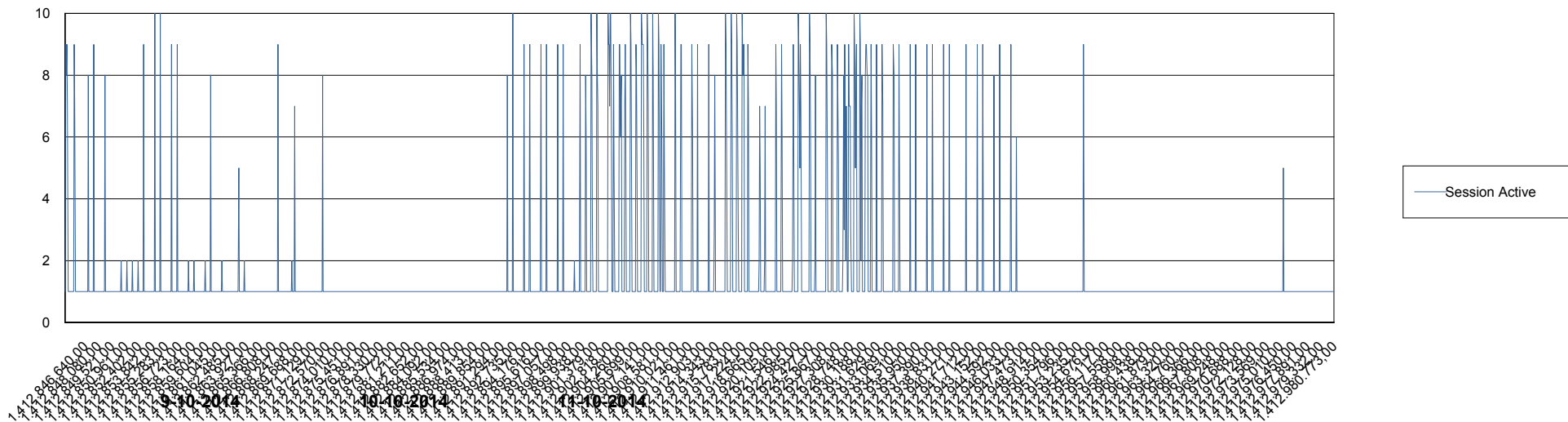
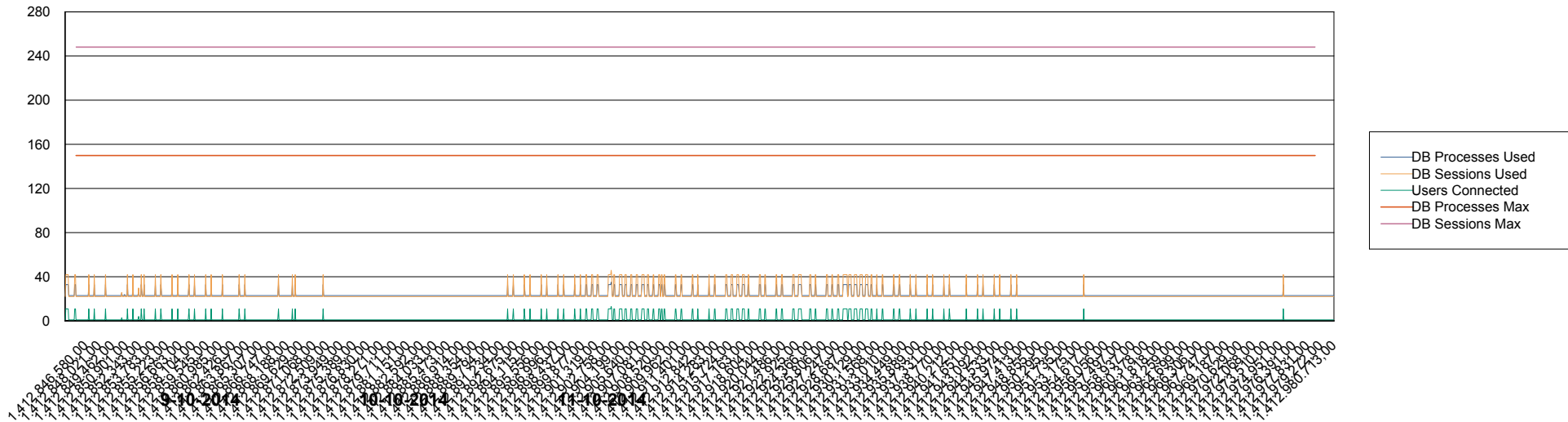
- Session Active

Weekly SLA Customer Report

Customer AUJ_Production
Database ID 41



DATABASE PERFORMANCE AUJDB3_Standby



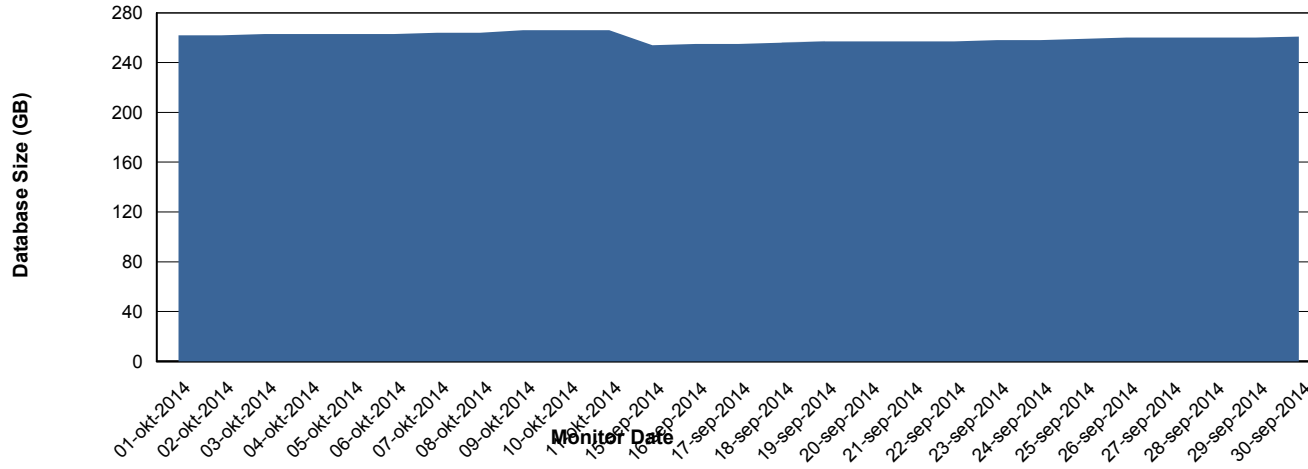
Weekly SLA Customer Report

Customer AUJ_Production
Database ID 41



DATABASE SIZE AUJDB_Production

Database growth over last month



Weekly SLA Customer Report

Customer AUJ_Production
 Database ID 41



=====
 DATABASE TABLESPACES AUJDB_BI
 =====

TOTAL DATABASE SIZE PER TABLESPACE

Date	Tablespace Name	Filesize (Gb)	Usedsize (Gb)	Percentage free
11-10-2014	ABSDATA	99	83	16
	INDX	164	140	15
10-10-2014	ABSDATA	99	83	16
	INDX	164	140	15
9-10-2014	ABSDATA	99	83	16
	INDX	164	140	15
8-10-2014	ABSDATA	99	83	16
	INDX	164	140	15

Weekly SLA Customer Report

Customer AUJ_Production
 Database ID 41



DATABASE TABLESPACES AUJDB_Production

TOTAL DATABASE SIZE PER TABLESPACE

Date	Tablespace Name	Filesize (Gb)	Usedsize (Gb)	Percentage free
11-10-2014	ABSDATA	139	115	17
	INDX	177	149	16
10-10-2014	ABSDATA	139	115	17
	INDX	177	149	16
9-10-2014	ABSDATA	139	115	17
	INDX	177	149	16
8-10-2014	ABSDATA	139	115	17
	INDX	177	149	16

STANDBY DATABASE HEALTH AUJ_Production

Recovery lag for last 7 days

