

## Weekly SLA Customer Report

Customer RFL\_Production  
 Database ID 36



=====  
 HARDDISK USAGE RFL\_PRD\_ORACLE1  
 =====

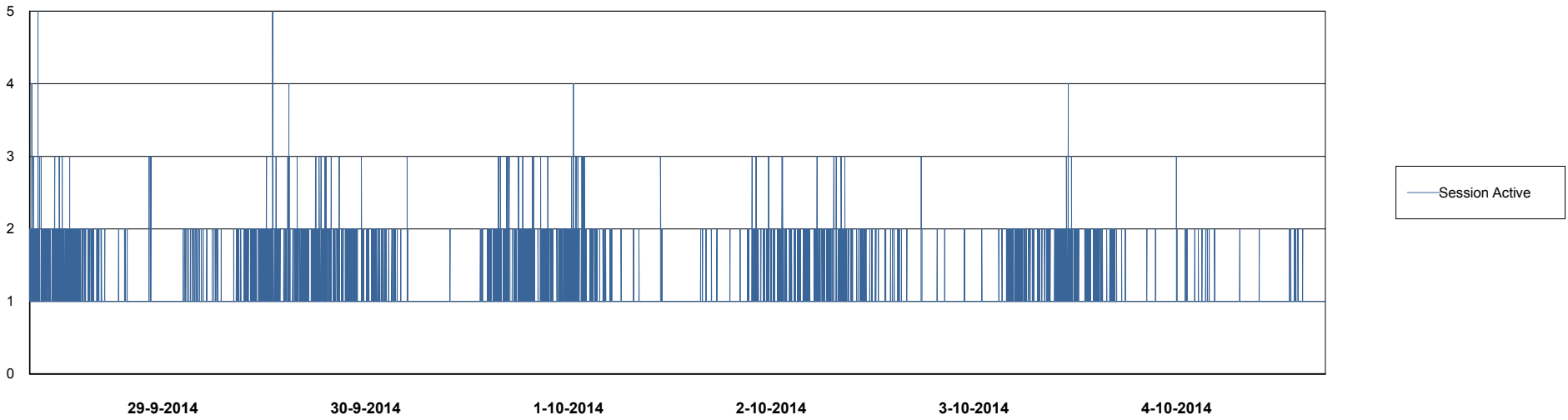
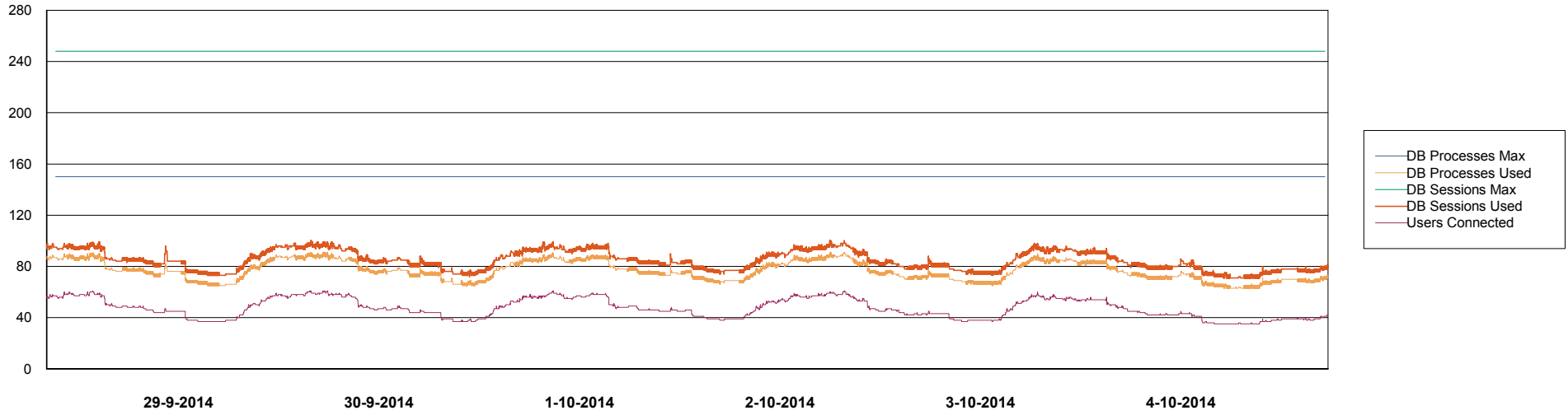
	Total disk space on C (GB)	Free disk space on C (GB)	Total disk space on D (GB)	Free disk space on D (GB)	Total disk space on E (GB)	Free disk space on E (GB)
<b>4-10-2014</b>	279	132	137	100	137	75
<b>3-10-2014</b>	279	132	137	100	137	75
<b>2-10-2014</b>	279	132	137	100	137	76
<b>1-10-2014</b>	279	132	137	100	137	77
<b>30-9-2014</b>	279	132	137	100	137	77
<b>29-9-2014</b>	279	132	137	100	137	78
<b>28-9-2014</b>	279	132	137	100	137	78

# Weekly SLA Customer Report

Customer RFL\_Production  
Database ID 36



## DATABASE PERFORMANCE RFLDB\_Production

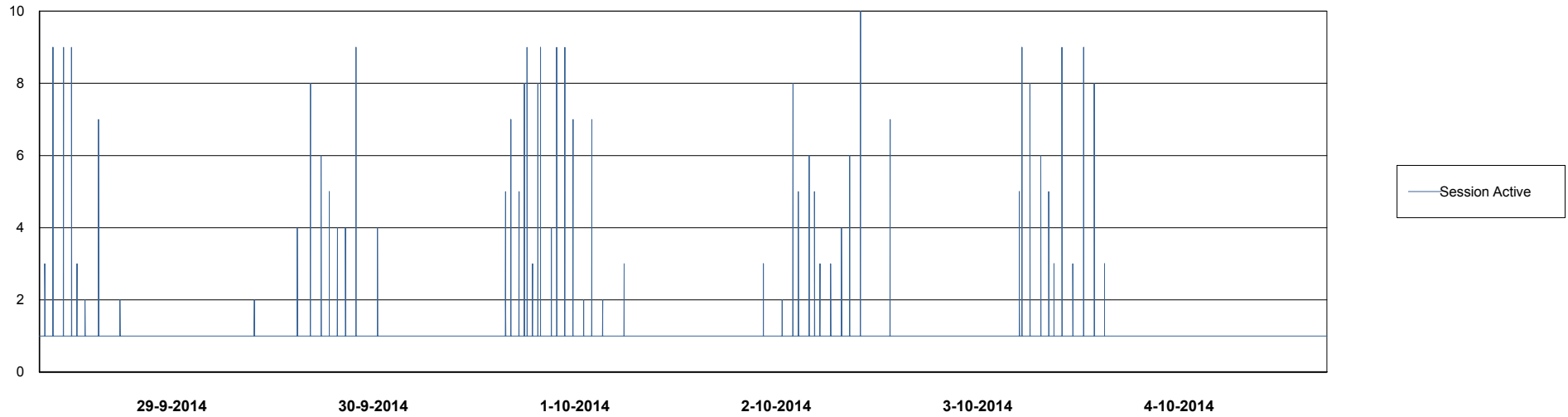
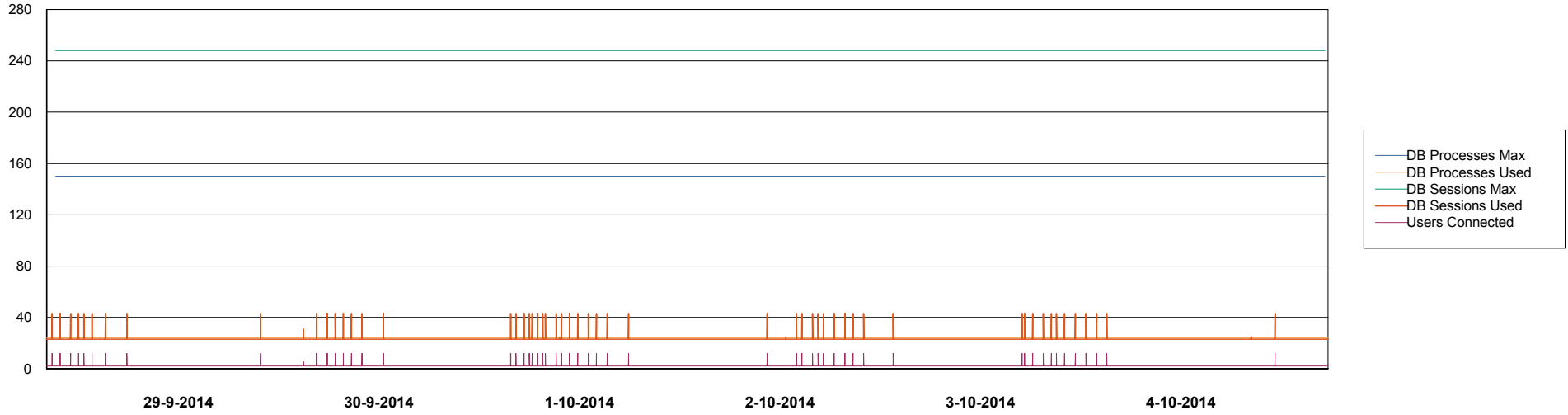


# Weekly SLA Customer Report

Customer RFL\_Production  
Database ID 36



## DATABASE PERFORMANCE RFLDB\_Standby



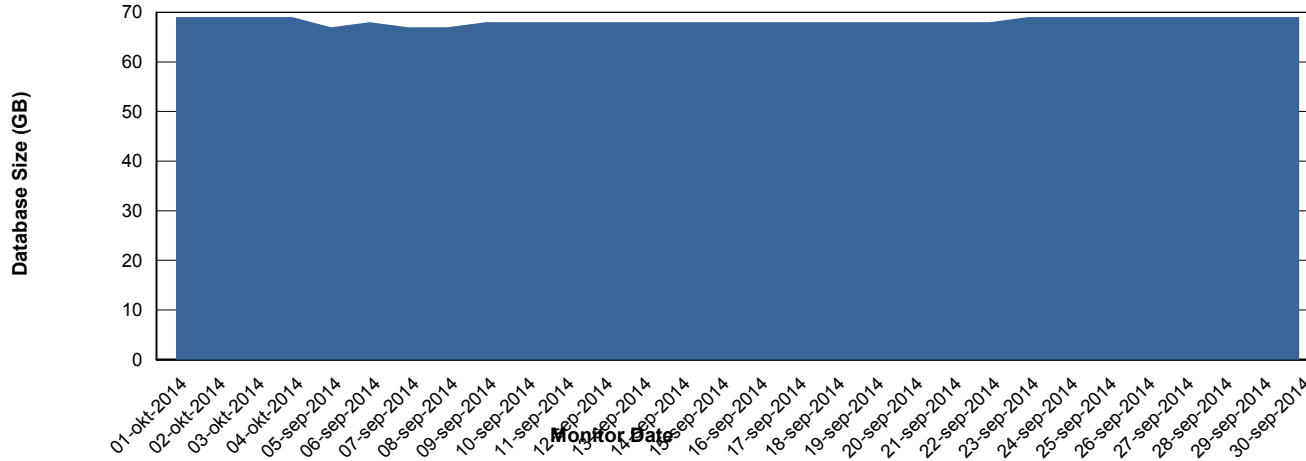
# Weekly SLA Customer Report

Customer RFL\_Production  
 Database ID 36



=====  
 DATABASE SIZE RFLDB\_Production  
 =====

## Database growth over last month



=====  
 DATABASE TABLESPACES RFLDB\_Production  
 =====

### TOTAL DATABASE SIZE PER TABLESPACE

Date	Tablespace Name	Filesize (Gb)	Usedsize (Gb)	Percentage free
4-10-2014	ABSDATA	21	17	19
	INDX	60	51	15
3-10-2014	ABSDATA	21	17	19
	INDX	60	51	15
2-10-2014	ABSDATA	21	17	19
	INDX	60	51	15
1-10-2014	ABSDATA	21	17	19
	INDX	60	51	15
30-9-2014	ABSDATA	21	17	19
	INDX	60	51	15
29-9-2014	ABSDATA	21	17	19
	INDX	60	51	15
28-9-2014	ABSDATA	21	17	19
	INDX	60	51	15

# Weekly SLA Customer Report

Customer RFL\_Production  
Database ID 36



=====  
STANDBY DATABASE HEALTH RFL\_Production  
=====

### Recovery lag for last 7 days

