

Weekly SLA Customer Report

Customer NIX_Production
 Database ID 51



=====
 HARDDISK USAGE NIX_PRD_ABSAPP1
 =====

	Total disk space on C (GB)	Free disk space on C (GB)
4-10-2014	136	86
3-10-2014	136	86
2-10-2014	136	86
1-10-2014	136	86
30-9-2014	136	86
29-9-2014	136	85
28-9-2014	136	86

=====
 HARDDISK USAGE NIX_PRD_ABSWEB1
 =====

	Total disk space on C (GB)	Free disk space on C (GB)
4-10-2014	930	732
3-10-2014	930	732
2-10-2014	930	732
1-10-2014	930	733
30-9-2014	930	733
29-9-2014	930	733
28-9-2014	930	733

Weekly SLA Customer Report

Customer NIX_Production
 Database ID 51



=====
 HARDDISK USAGE NIX_PRD_ORACLE_BI1
 =====

	Total disk space on C (GB)	Free disk space on C (GB)	Total disk space on D (GB)	Free disk space on D (GB)	Total disk space on E (GB)	Free disk space on E (GB)
4-10-2014	40	7	279	180	236	169
3-10-2014	40	7	279	180	236	169
2-10-2014	40	7	279	180	236	169
1-10-2014	40	7	279	180	236	169
30-9-2014	40	7	279	180	236	169
29-9-2014	40	7	279	180	236	168
28-9-2014	40	7	279	180	236	169

=====
 HARDDISK USAGE NIX_PRD_ORCDB1
 =====

	Total disk space on C (GB)	Free disk space on C (GB)	Total disk space on D (GB)	Free disk space on D (GB)	Total disk space on E (GB)	Free disk space on E (GB)
4-10-2014	136	22	136	35	136	97
3-10-2014	136	22	136	35	136	100
2-10-2014	136	22	136	35	136	100
1-10-2014	136	22	136	35	136	100
30-9-2014	136	21	136	35	136	100
29-9-2014	136	21	136	35	136	100
28-9-2014	136	21	136	35	136	100

Weekly SLA Customer Report

Customer NIX_Production
 Database ID 51



=====
 HARDDISK USAGE NIX_PRD_ORCDB2
 =====

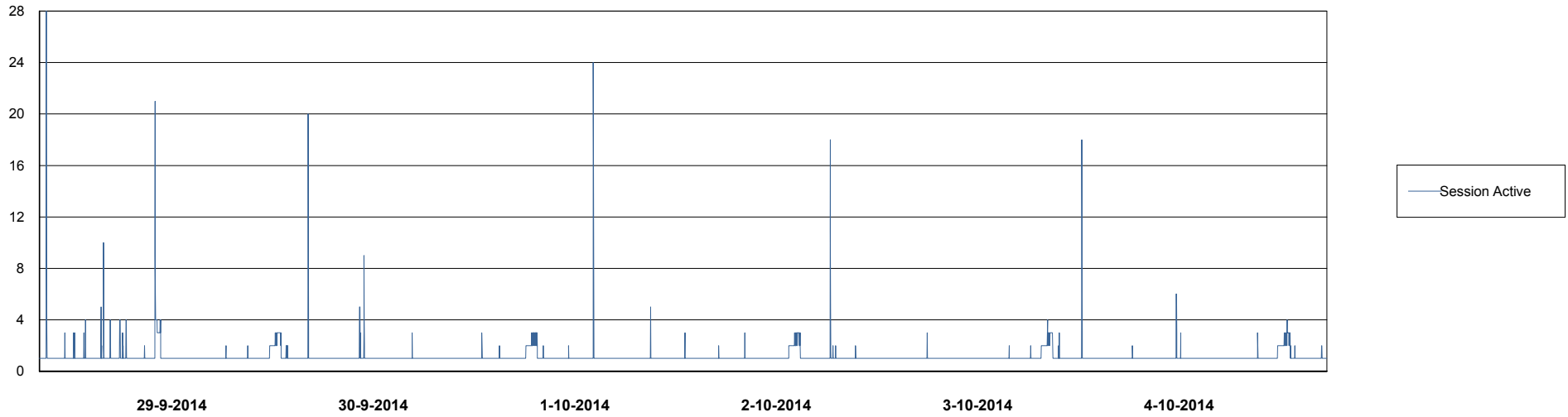
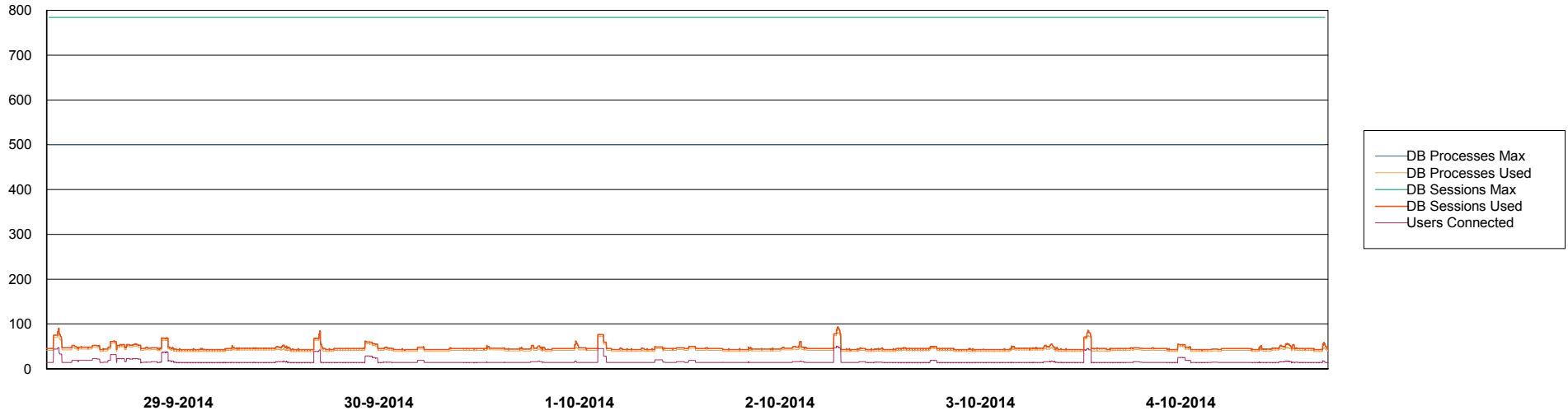
	Total disk space on C (GB)	Free disk space on C (GB)	Total disk space on D (GB)	Free disk space on D (GB)	Total disk space on E (GB)	Free disk space on E (GB)
4-10-2014	279	48	279	48	279	159
3-10-2014	279	48	279	48	279	194
2-10-2014	279	48	279	48	279	133
1-10-2014	279	48	279	48	279	74
30-9-2014	279	48	279	48	279	90
29-9-2014	279	48	279	48	279	46
28-9-2014	279	48	279	48	279	24

Weekly SLA Customer Report

Customer NIX_Production
Database ID 51



=====
DATABASE PERFORMANCE NIXDB_BI
=====



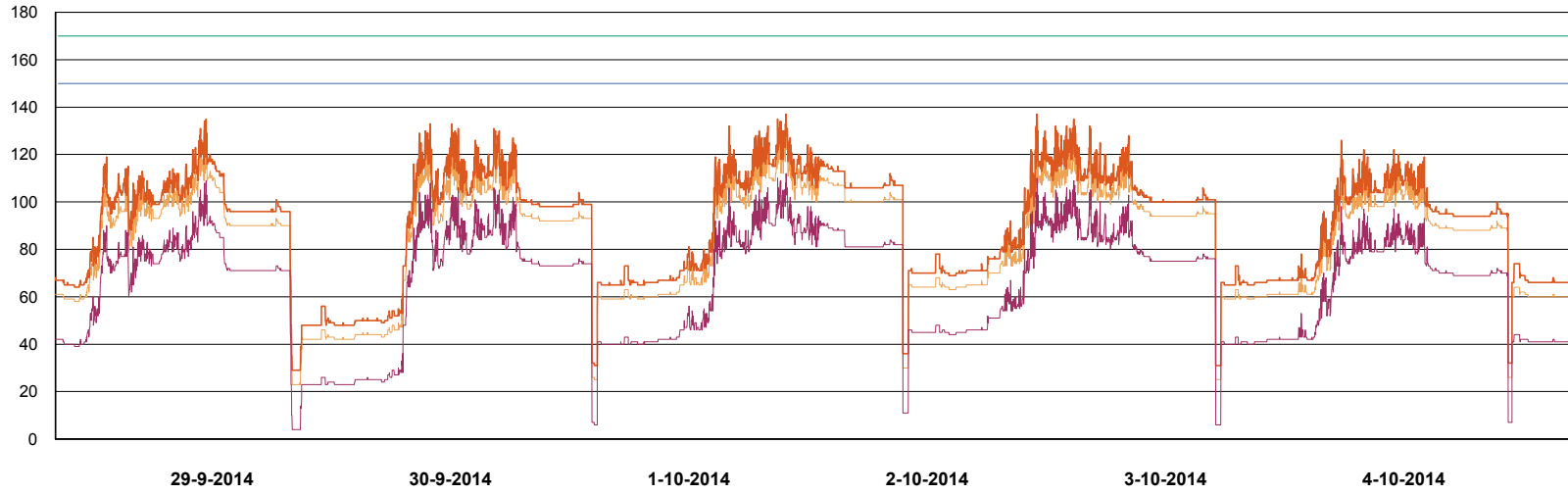
Weekly SLA Customer Report

Customer NIX_Production
Database ID 51

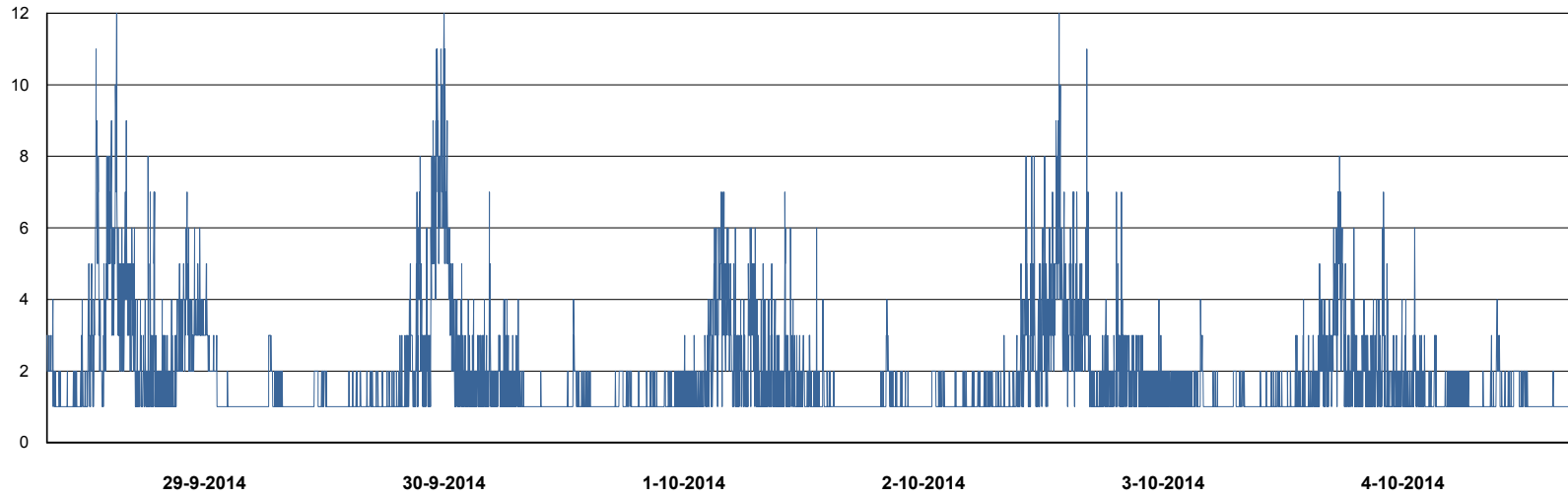


DATABASE PERFORMANCE

NIXDB_Production



- DB Processes Max
- DB Processes Used
- DB Sessions Max
- DB Sessions Used
- Users Connected



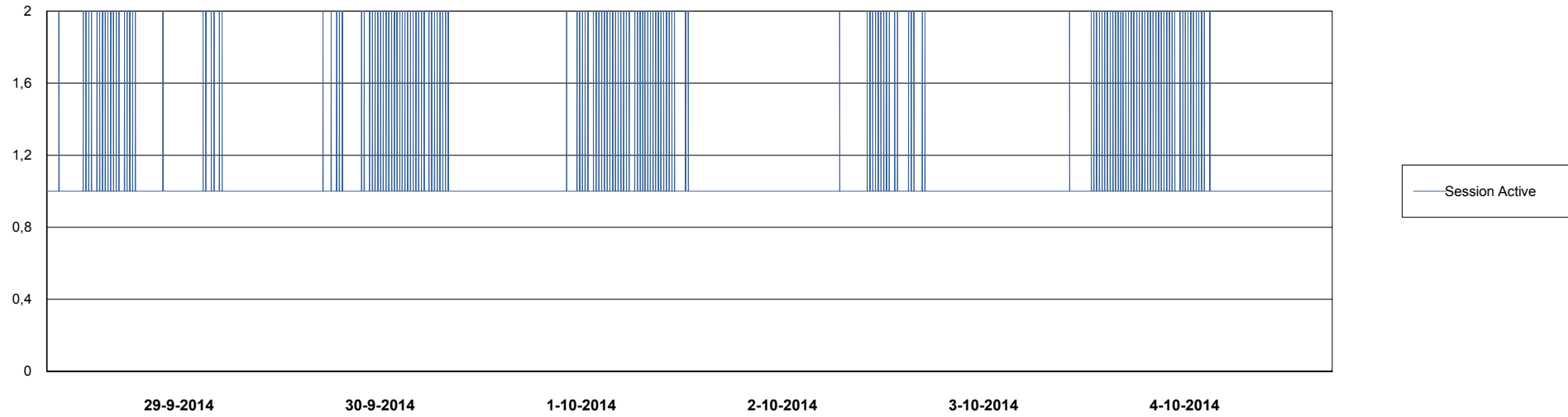
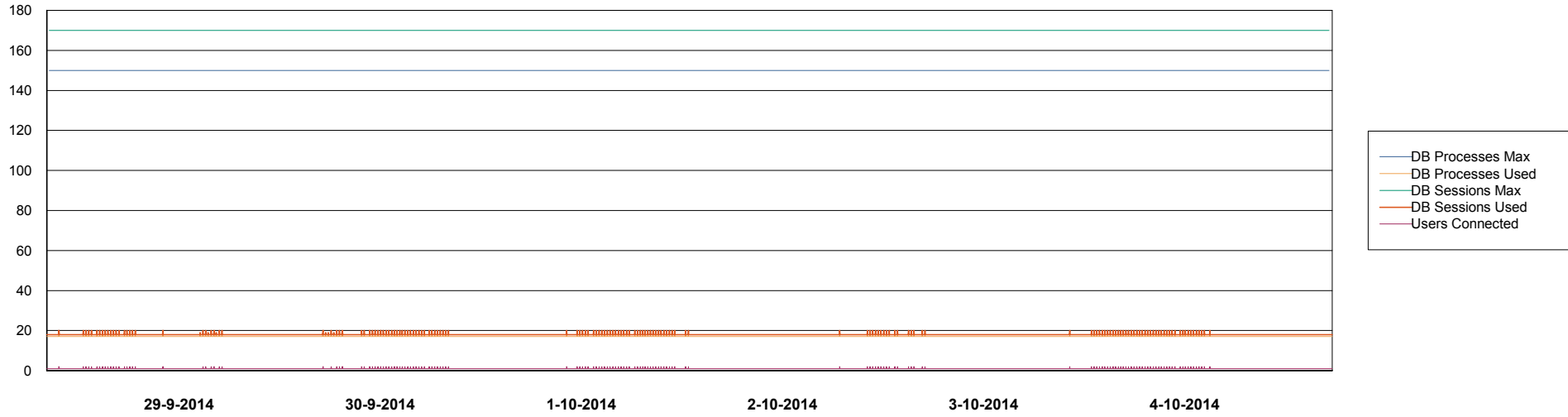
- Session Active

Weekly SLA Customer Report

Customer NIX_Production
Database ID 51



DATABASE PERFORMANCE NIXDB_Standby



Weekly SLA Customer Report

Customer NIX_Production
 Database ID 51



=====
 DATABASE TABLESPACES NIXDB_BI
 =====
 TOTAL DATABASE SIZE PER TABLESPACE

Date	Tablespace Name	Filesize (Gb)	Usedsize (Gb)	Percentage free
4-10-2014	ABSDATA	20	17	15
	INDX	40	27	33
3-10-2014	ABSDATA	20	17	15
	INDX	40	27	33
2-10-2014	ABSDATA	20	17	15
	INDX	40	27	33
1-10-2014	ABSDATA	20	17	15
	INDX	40	27	33
30-9-2014	ABSDATA	20	17	15
	INDX	40	27	33
29-9-2014	ABSDATA	20	17	15
	INDX	40	27	33
28-9-2014	ABSDATA	20	17	15
	INDX	40	27	33

Weekly SLA Customer Report

Customer NIX_Production
 Database ID 51



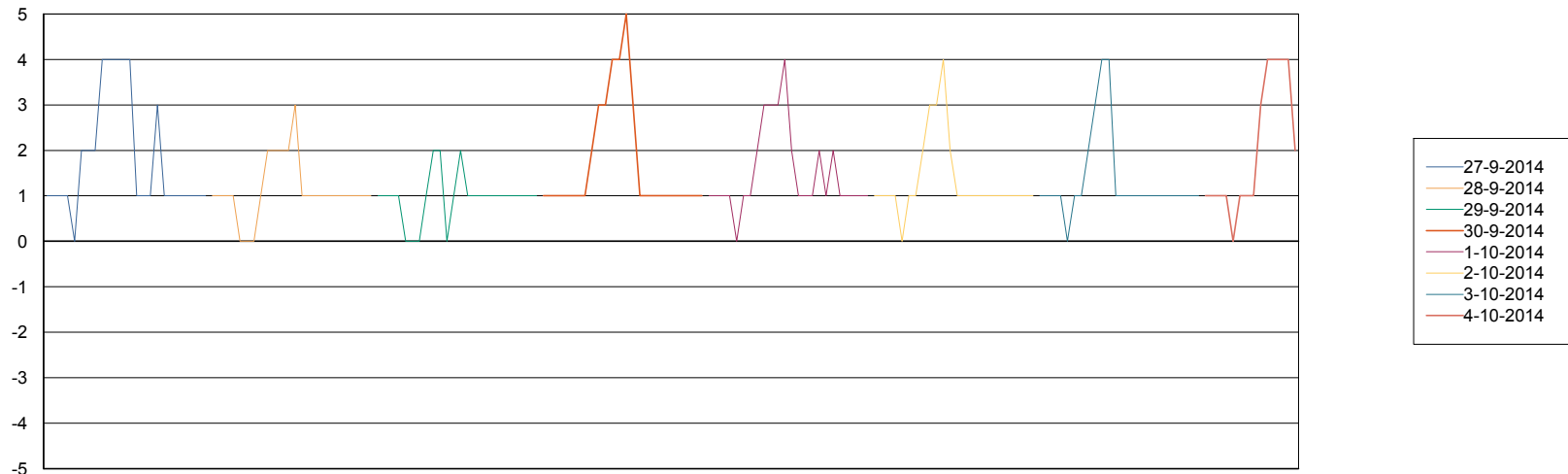
=====
 DATABASE TABLESPACES NIXDB_Production
 =====

TOTAL DATABASE SIZE PER TABLESPACE

Date	Tablespace Name	Filesize (Gb)	Usedsize (Gb)	Percentage free
4-10-2014	ABSDATA	40	28	30
	INDX	97	76	22
3-10-2014	ABSDATA	40	28	30
	INDX	97	76	22
2-10-2014	ABSDATA	40	28	30
	INDX	97	76	22
1-10-2014	ABSDATA	40	28	30
	INDX	97	76	22
30-9-2014	ABSDATA	40	28	30
	INDX	97	76	22
29-9-2014	ABSDATA	40	28	30
	INDX	97	75	23
28-9-2014	ABSDATA	40	28	30
	INDX	97	75	23

=====
 STANDBY DATABASE HEALTH NIX_Production
 =====

Recovery lag for last 7 days



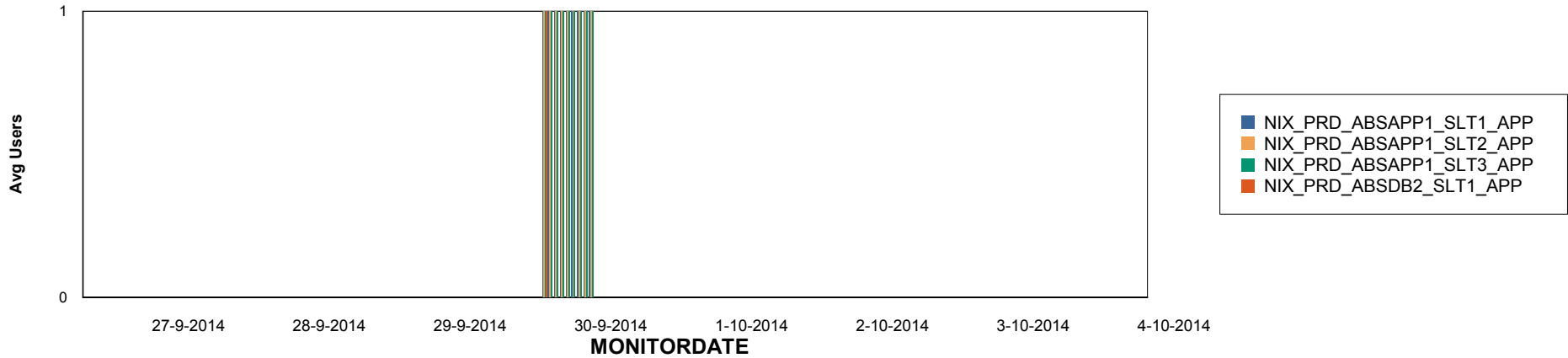
Weekly SLA Customer Report

Customer NIX_Production
Database ID 51

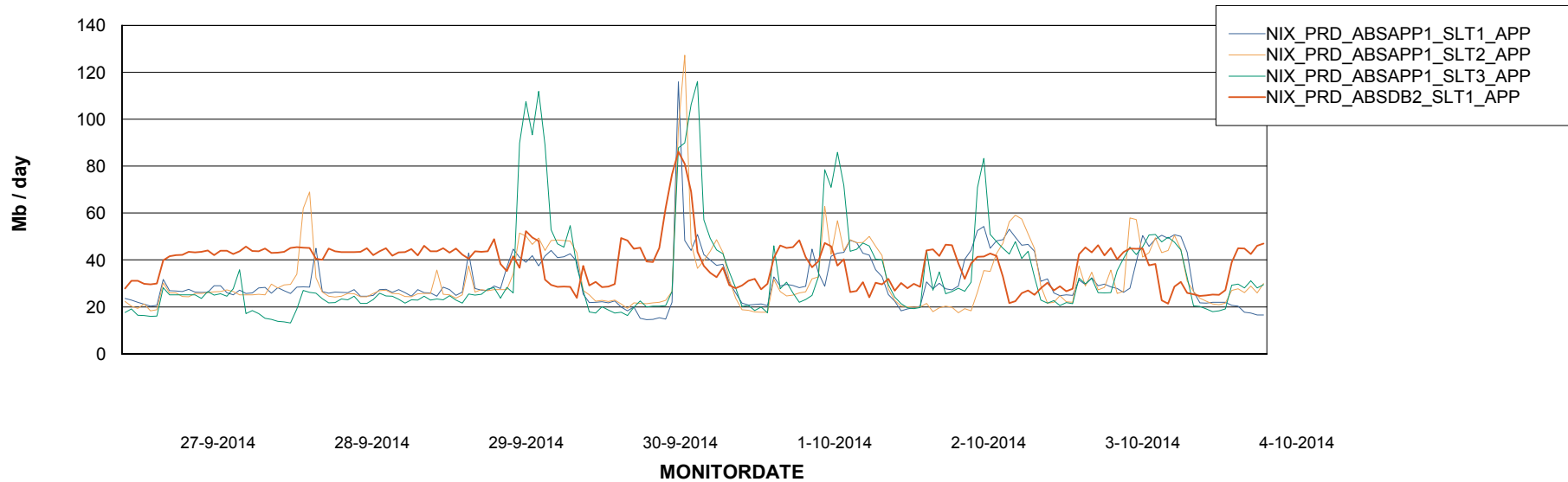


=====
ABSolute Application Server Services
=====

Disaster per ABS Server



Avg memory used per ABS Server Service



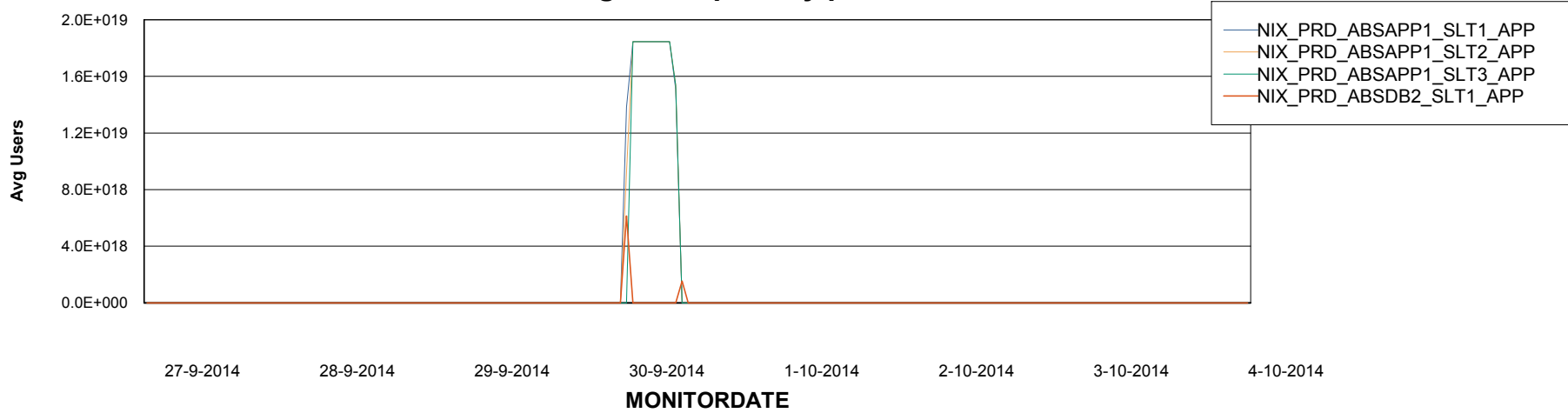
Weekly SLA Customer Report

Customer NIX_Production
Database ID 51



=====
ABSolute Application Server Services
=====

Avg users per day per ABS server



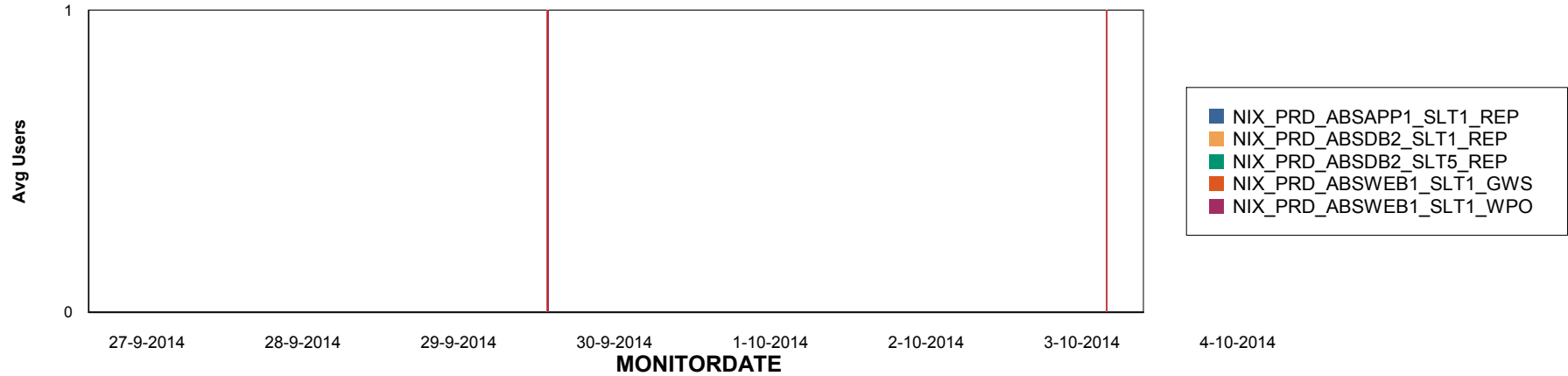
Weekly SLA Customer Report

Customer NIX_Production
Database ID 51

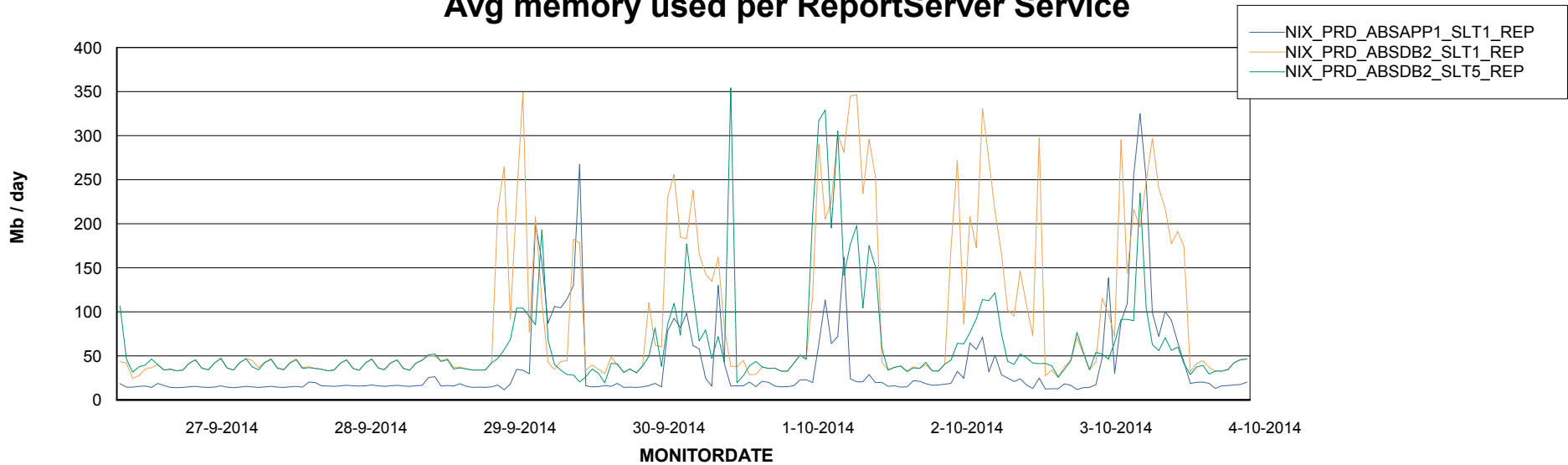


=====
ABSolute Application ReportServer Services
=====

Disaster per ReportServer



Avg memory used per ReportServer Service



Weekly SLA Customer Report

Customer NIX_Production
Database ID 51



Disaster per ABS component

