

## Weekly SLA Customer Report

Customer      JWR Production  
 Database ID    43



=====  
 HARDDISK USAGE    JWR\_PRD\_JWR-ABS-01  
 =====

	Used disk space on / (GB)	Total disk space on / (GB)	Free disk space on / (GB)
4-10-2014	27	49	20
3-10-2014	27	49	20
2-10-2014	27	49	20
1-10-2014	27	49	20
30-9-2014	27	49	20
29-9-2014	27	49	20
28-9-2014	27	49	20

=====  
 HARDDISK USAGE    JWR\_PRD\_JWR-ABS-02  
 =====

	Used disk space on / (GB)	Total disk space on / (GB)	Free disk space on / (GB)
4-10-2014	25	49	22
3-10-2014	25	49	22
2-10-2014	25	49	22
1-10-2014	25	49	22
30-9-2014	25	49	22
29-9-2014	25	49	22
28-9-2014	25	49	22

## Weekly SLA Customer Report

Customer      JWR Production  
 Database ID    43



=====

HARDDISK USAGE    JWR\_PRD\_JWR-ODB-01

=====

	Used disk space on / (GB)	Total disk space on / (GB)	Free disk space on / (GB)
4-10-2014	74	90	11
3-10-2014	74	90	11
2-10-2014	74	90	11
1-10-2014	74	90	11
30-9-2014	74	90	11
29-9-2014	74	90	11
28-9-2014	74	90	12

=====

HARDDISK USAGE    JWR\_PRD\_JWR-ODB-02

=====

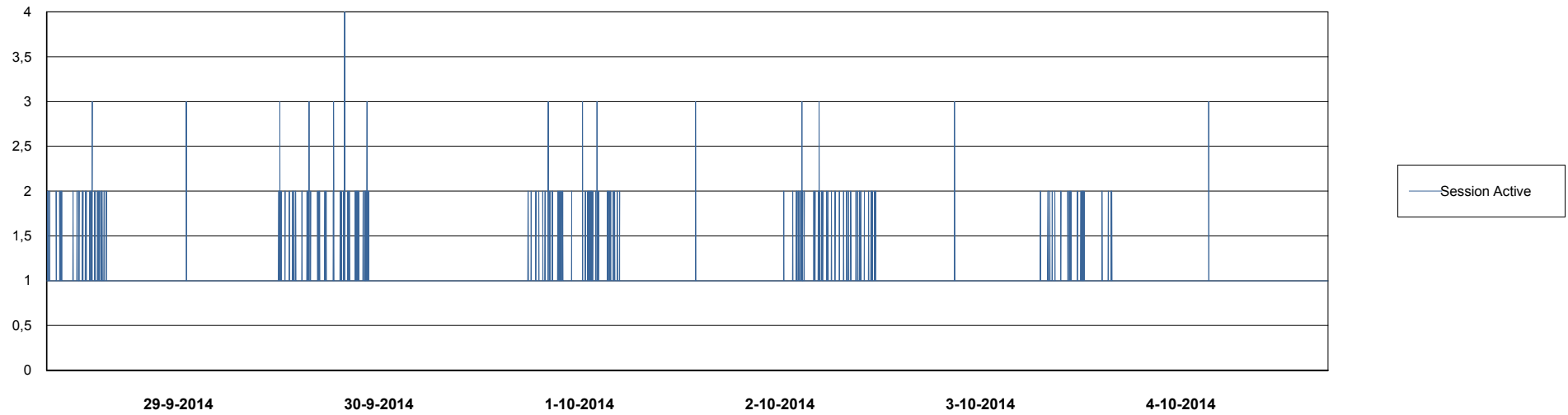
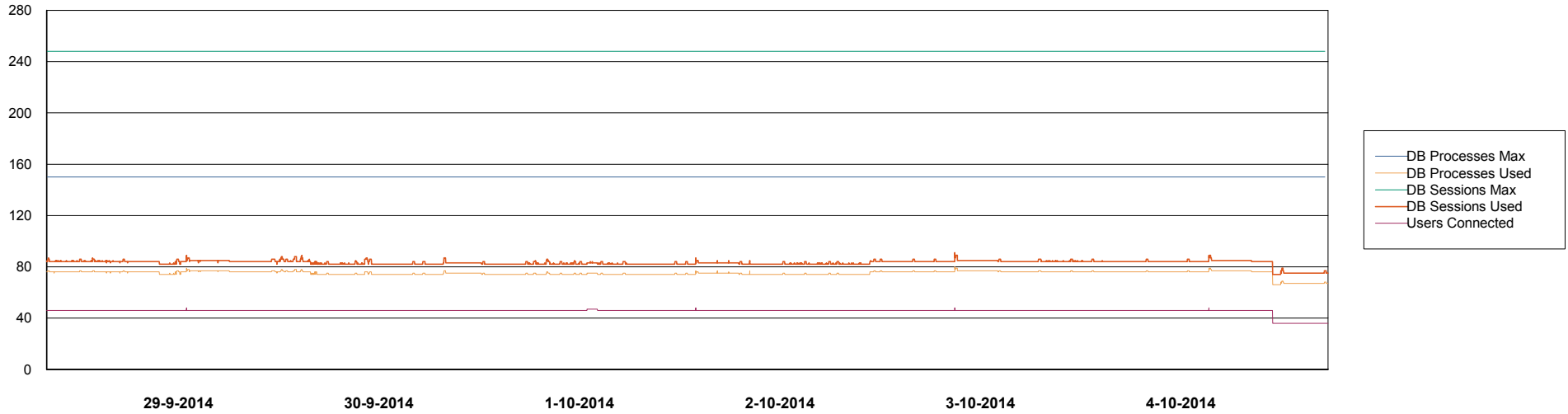
	Used disk space on / (GB)	Total disk space on / (GB)	Free disk space on / (GB)
4-10-2014	91	138	40
3-10-2014	91	138	39
2-10-2014	91	138	39
1-10-2014	91	138	39
30-9-2014	91	138	40
29-9-2014	91	138	39
28-9-2014	91	138	40

# Weekly SLA Customer Report

Customer JWR Production  
Database ID 43



DATABASE PERFORMANCE JWRDB\_Production



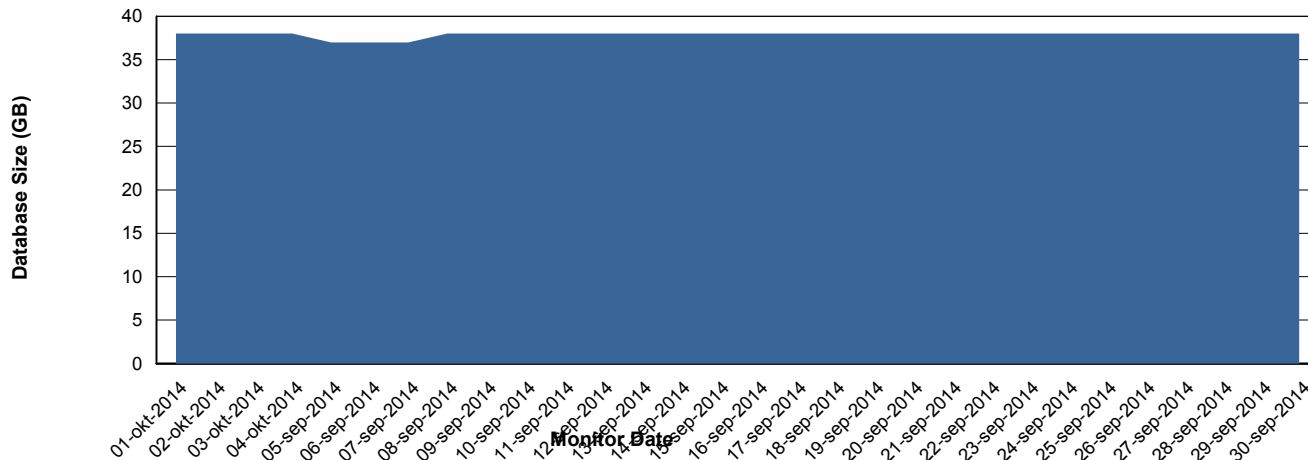
# Weekly SLA Customer Report

Customer JWR Production  
 Database ID 43



=====  
 DATABASE SIZE JWRDB\_Production  
 =====

## Database growth over last month



=====  
 DATABASE TABLESPACES JWRDB\_Production  
 =====

### TOTAL DATABASE SIZE PER TABLESPACE

Date	Tablespace Name	Filesize (Gb)	Usedsize (Gb)	Percentage free
4-10-2014	ABSDATA	15	11	27
	INDX	32	26	19
3-10-2014	ABSDATA	15	11	27
	INDX	32	26	19
2-10-2014	ABSDATA	15	11	27
	INDX	32	26	19
1-10-2014	ABSDATA	15	11	27
	INDX	32	26	19
30-9-2014	ABSDATA	15	11	27
	INDX	32	26	19
29-9-2014	ABSDATA	15	11	27
	INDX	32	26	19
28-9-2014	ABSDATA	15	11	27
	INDX	32	26	19

## Weekly SLA Customer Report

---

Customer     JWR Production  
Database ID   43



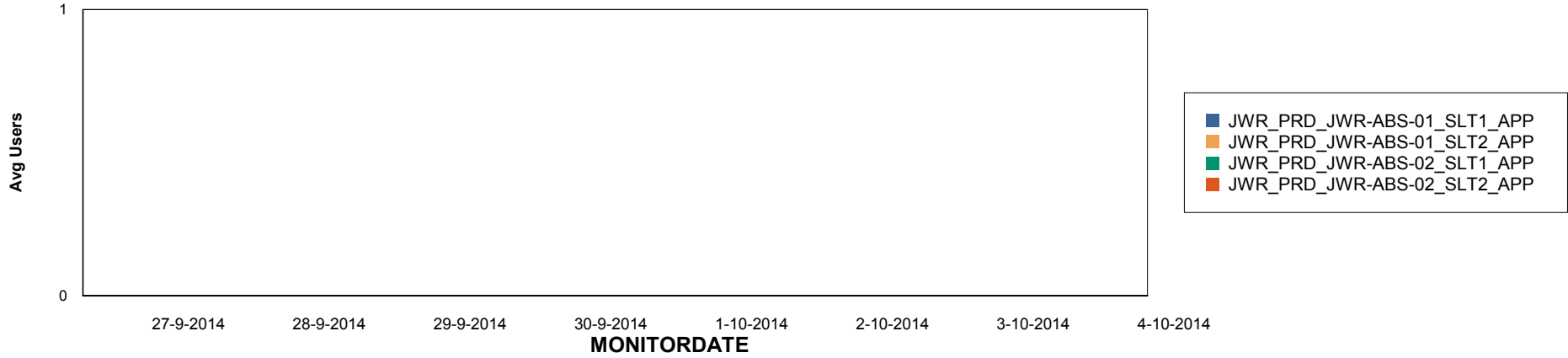
# Weekly SLA Customer Report

Customer JWR Production  
Database ID 43

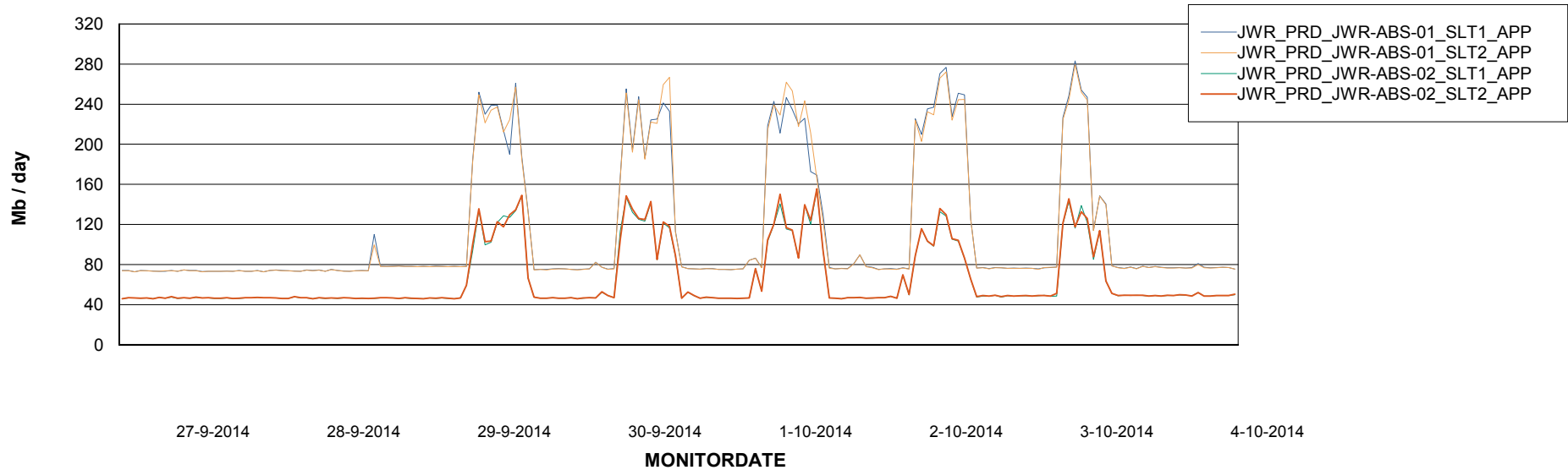


=====  
ABSolute Application Server Services  
=====

## Disaster per ABS Server



## Avg memory used per ABS Server Service



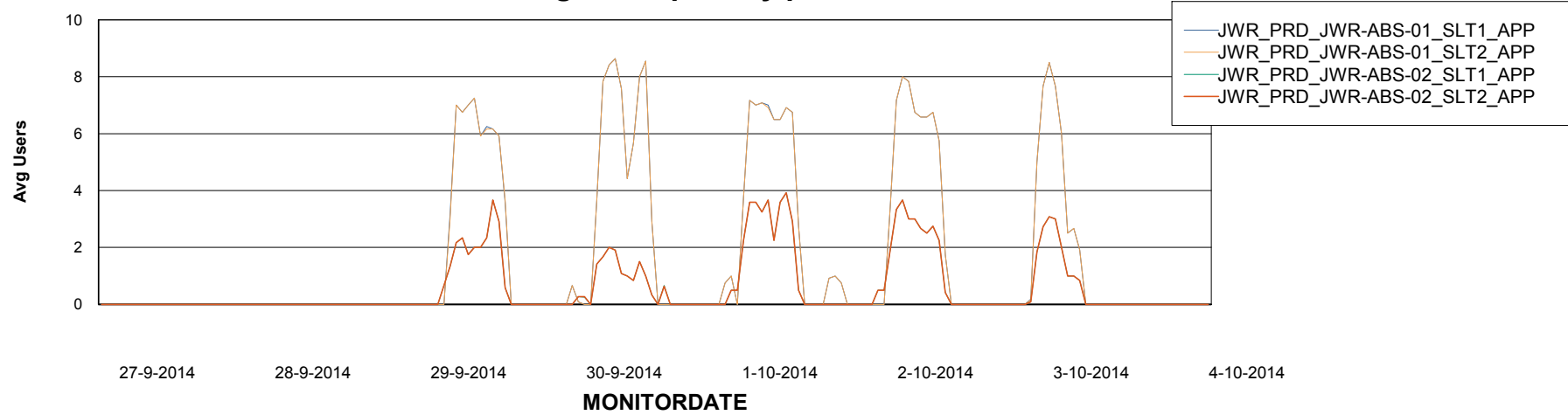
# Weekly SLA Customer Report

Customer JWR Production  
Database ID 43



=====  
ABSolute Application Server Services  
=====

### Avg users per day per ABS server



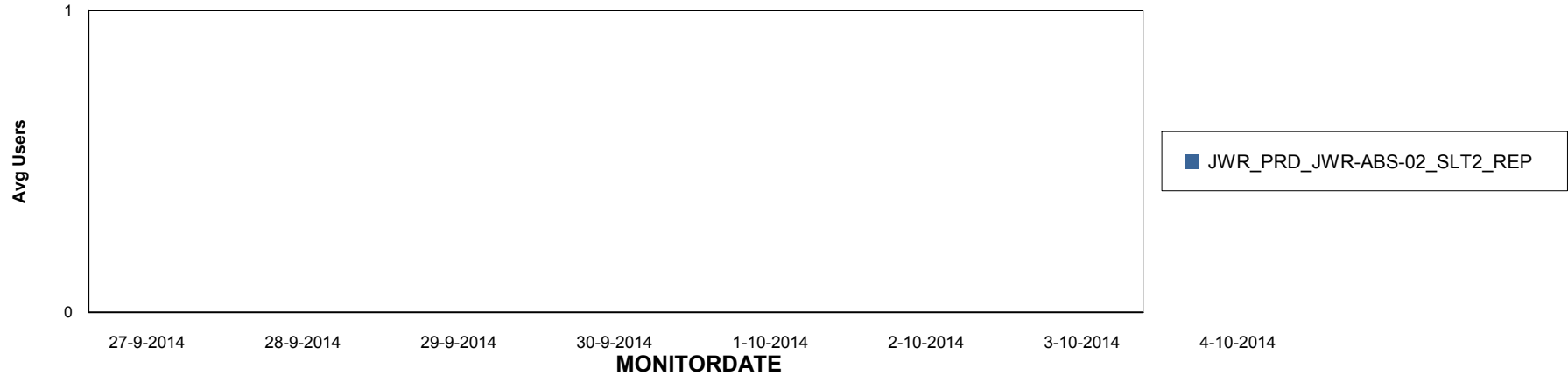
# Weekly SLA Customer Report

Customer JWR Production  
Database ID 43

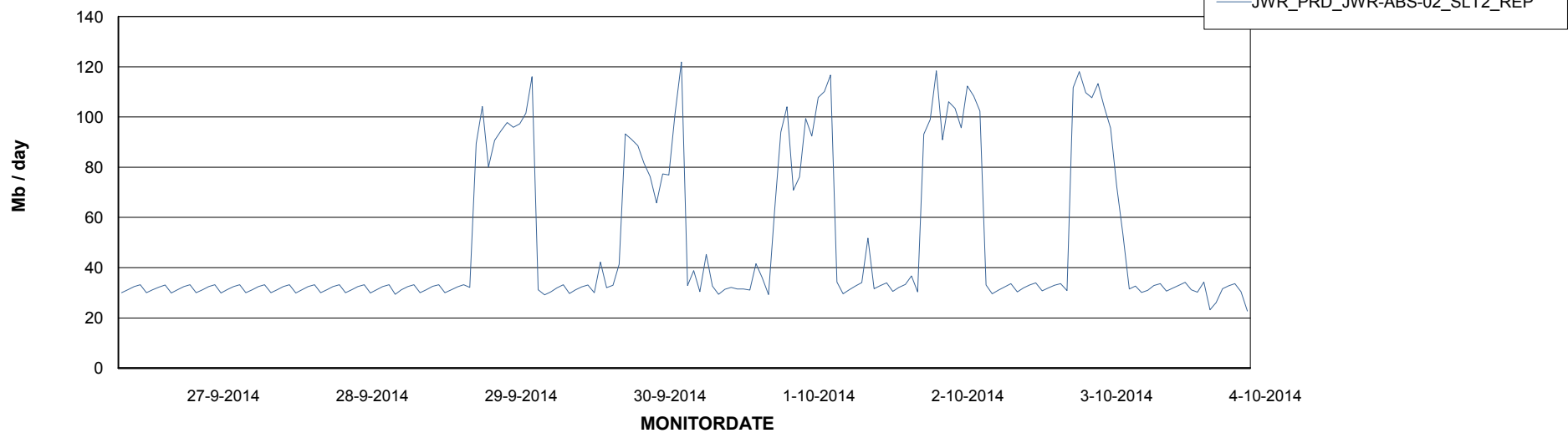


=====  
ABSolute Application ReportServer Services  
=====

## Disaster per ReportServer



## Avg memory used per ReportServer Service



# Weekly SLA Customer Report

Customer JWR Production  
Database ID 43



## Disaster per ABS component

