

## Weekly SLA Customer Report

Customer RFL\_Production  
 Database ID 36



=====  
 HARDDISK USAGE RFL\_PRD\_ORACLE1  
 =====

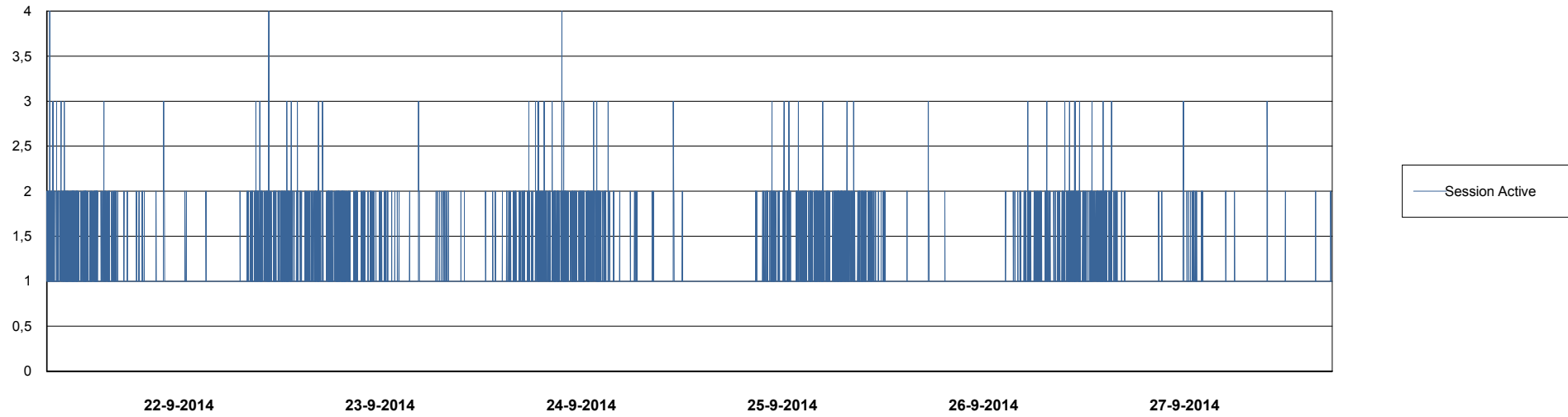
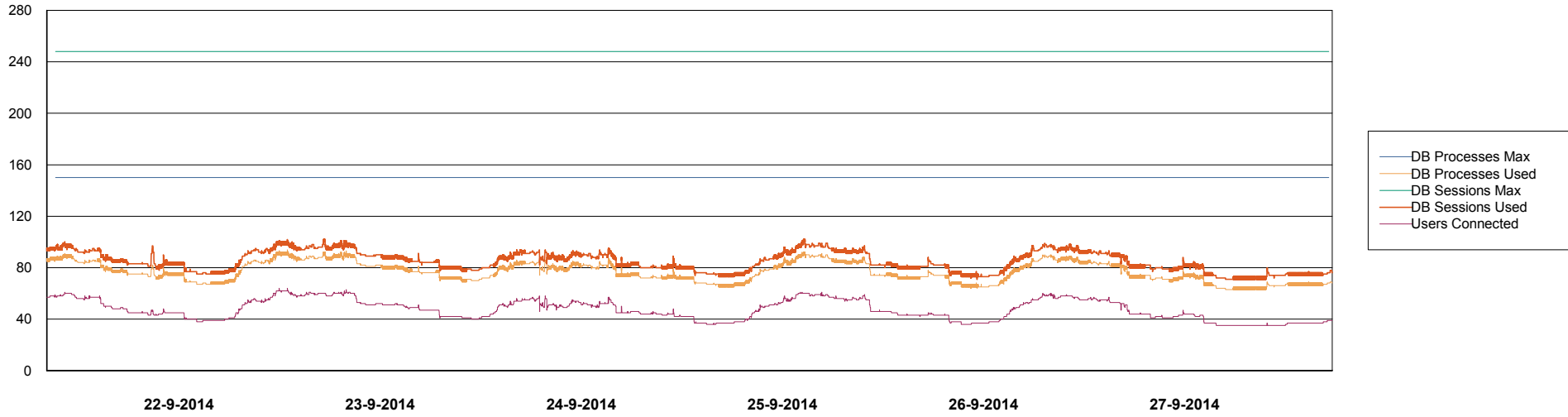
	Total disk space on C (GB)	Free disk space on C (GB)	Total disk space on D (GB)	Free disk space on D (GB)	Total disk space on E (GB)	Free disk space on E (GB)
27-9-2014	279	132	137	100	137	78
26-9-2014	279	132	137	100	137	79
25-9-2014	279	132	137	100	137	80
24-9-2014	279	132	137	100	137	80
23-9-2014	279	132	137	100	137	81
22-9-2014	279	85	137	100	137	81
21-9-2014	279	81	137	100	137	82

# Weekly SLA Customer Report

Customer RFL\_Production  
Database ID 36



## DATABASE PERFORMANCE RFLDB\_Production

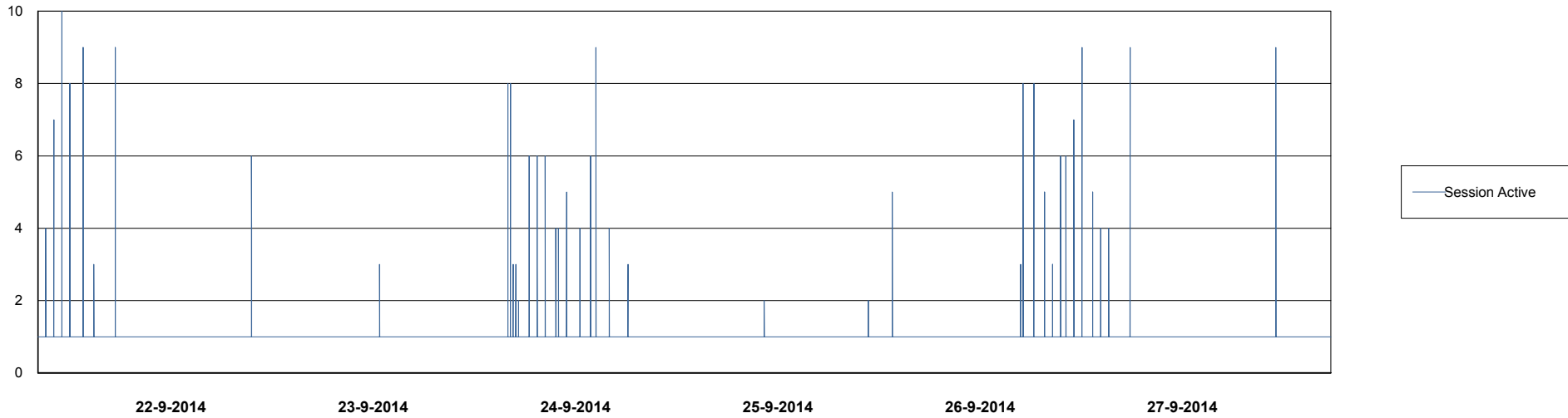
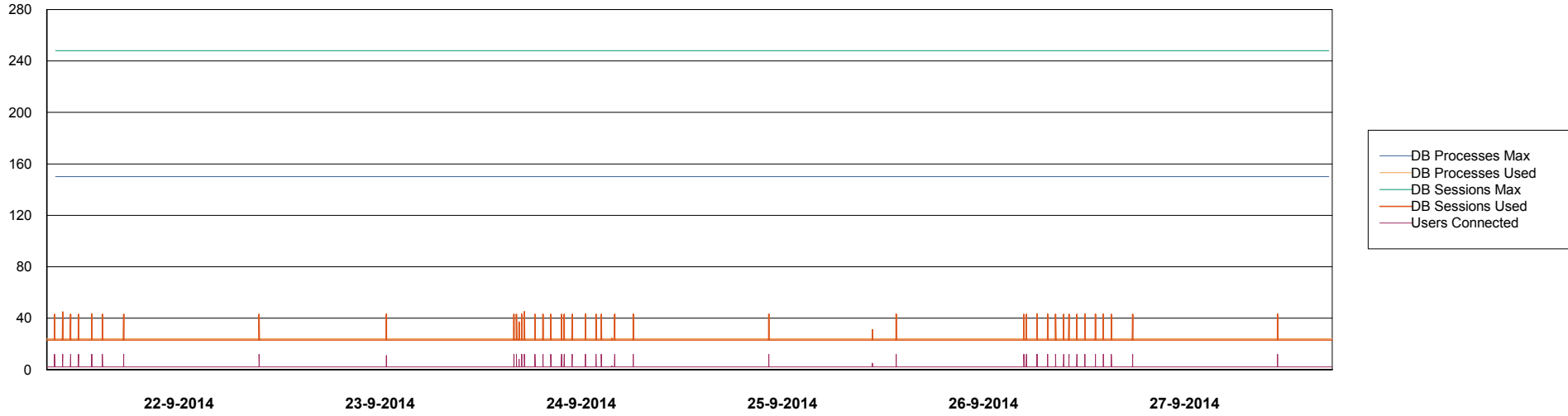


# Weekly SLA Customer Report

Customer RFL\_Production  
Database ID 36



=====  
DATABASE PERFORMANCE      RFLDB\_Standby      =====  
=====



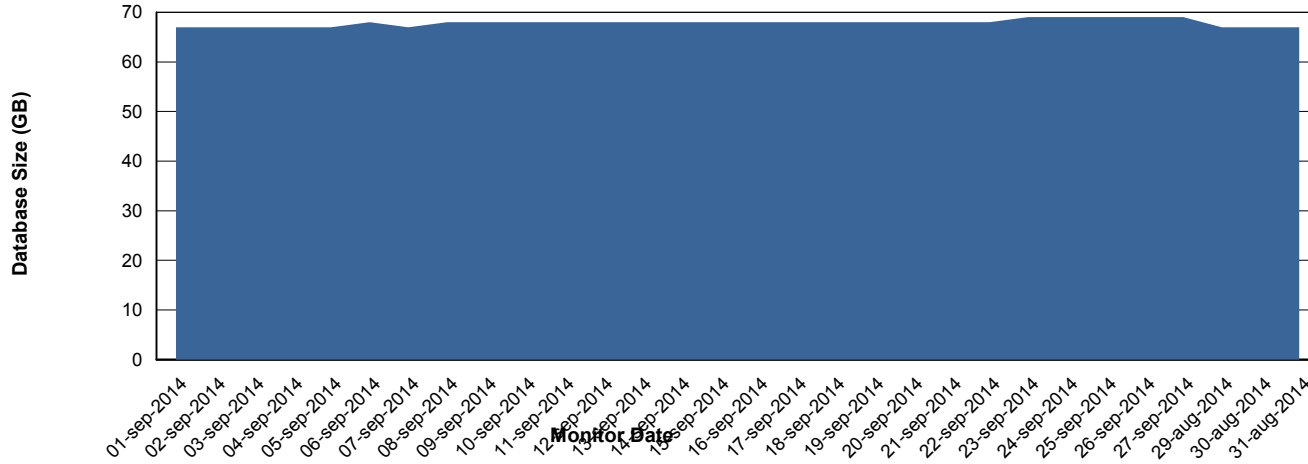
# Weekly SLA Customer Report

Customer RFL\_Production  
 Database ID 36



=====  
 DATABASE SIZE RFLDB\_Production  
 =====

## Database growth over last month



=====  
 DATABASE TABLESPACES RFLDB\_Production  
 =====

### TOTAL DATABASE SIZE PER TABLESPACE

Date	Tablespace Name	Filesize (Gb)	Usedsize (Gb)	Percentage free
27-9-2014	ABSDATA	21	17	19
	INDX	60	51	15
26-9-2014	ABSDATA	21	17	19
	INDX	60	51	15
25-9-2014	ABSDATA	21	17	19
	INDX	60	51	15
24-9-2014	ABSDATA	21	17	19
	INDX	60	51	15
23-9-2014	ABSDATA	21	17	19
	INDX	60	51	15
22-9-2014	ABSDATA	21	17	19
	INDX	60	50	17
21-9-2014	ABSDATA	21	17	19
	INDX	60	50	17

# Weekly SLA Customer Report

Customer RFL\_Production  
Database ID 36



=====  
STANDBY DATABASE HEALTH RFL\_Production  
=====

### Recovery lag for last 7 days

