

# Weekly SLA Customer Report

Customer NIX\_Production  
 Database ID 51



=====  
 HARDDISK USAGE NIX\_PRD\_ABSAPP1  
 =====

	Total disk space on C (GB)	Free disk space on C (GB)
27-9-2014	136	86
26-9-2014	136	86
25-9-2014	136	86
24-9-2014	136	86
23-9-2014	136	86
22-9-2014	136	86
21-9-2014	136	86

=====  
 HARDDISK USAGE NIX\_PRD\_ABSWEB1  
 =====

	Total disk space on C (GB)	Free disk space on C (GB)
27-9-2014	930	735
26-9-2014	930	735
25-9-2014	930	735
24-9-2014	930	735
23-9-2014	930	735
22-9-2014	930	735
21-9-2014	930	735

## Weekly SLA Customer Report

Customer      NIX\_Production  
 Database ID    51



=====  
 HARDDISK USAGE    NIX\_PRD\_ORACLE\_B11  
 =====

	Total disk space on C (GB)	Free disk space on C (GB)	Total disk space on D (GB)	Free disk space on D (GB)	Total disk space on E (GB)	Free disk space on E (GB)
27-9-2014	40	7	279	180	236	169
26-9-2014	40	7	279	180	236	169
25-9-2014	40	7	279	180	236	169
24-9-2014	40	7	279	178	236	167
23-9-2014	40	7	279	180	236	169
22-9-2014	40	7	279	180	236	169
21-9-2014	40	7	279	180	236	169

=====  
 HARDDISK USAGE    NIX\_PRD\_ORCDB1  
 =====

	Total disk space on C (GB)	Free disk space on C (GB)	Total disk space on D (GB)	Free disk space on D (GB)	Total disk space on E (GB)	Free disk space on E (GB)
27-9-2014	136	21	136	35	136	99
26-9-2014	136	21	136	35	136	100
25-9-2014	136	21	136	35	136	100
24-9-2014	136	21	136	35	136	101
23-9-2014	136	21	136	35	136	101
22-9-2014	136	21	136	35	136	101
21-9-2014	136	21	136	35	136	100

## Weekly SLA Customer Report

Customer      NIX\_Production  
 Database ID    51



=====  
 HARDDISK USAGE    NIX\_PRD\_ORCDB2  
 =====

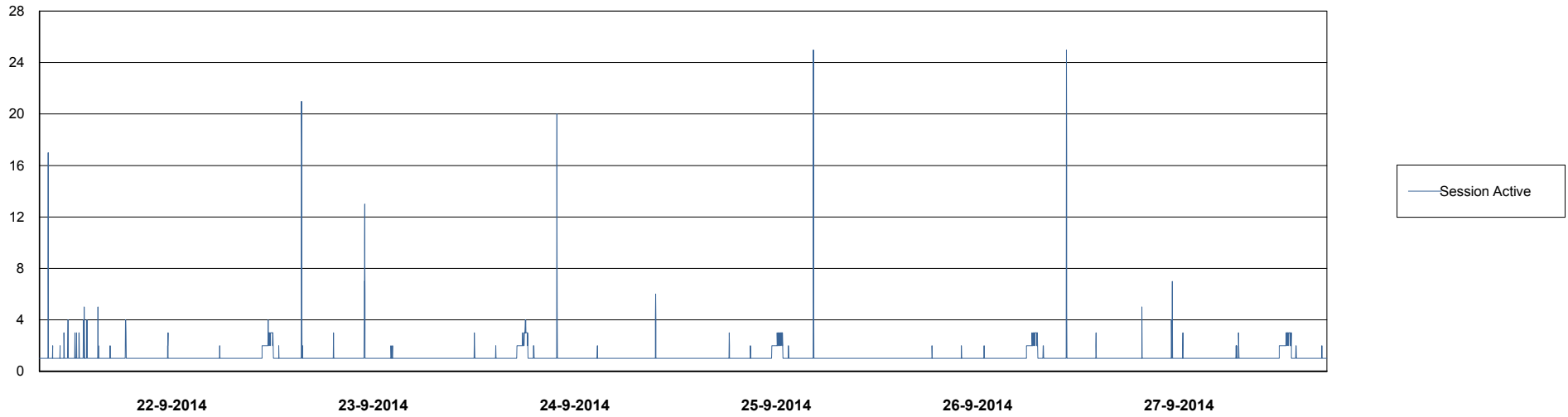
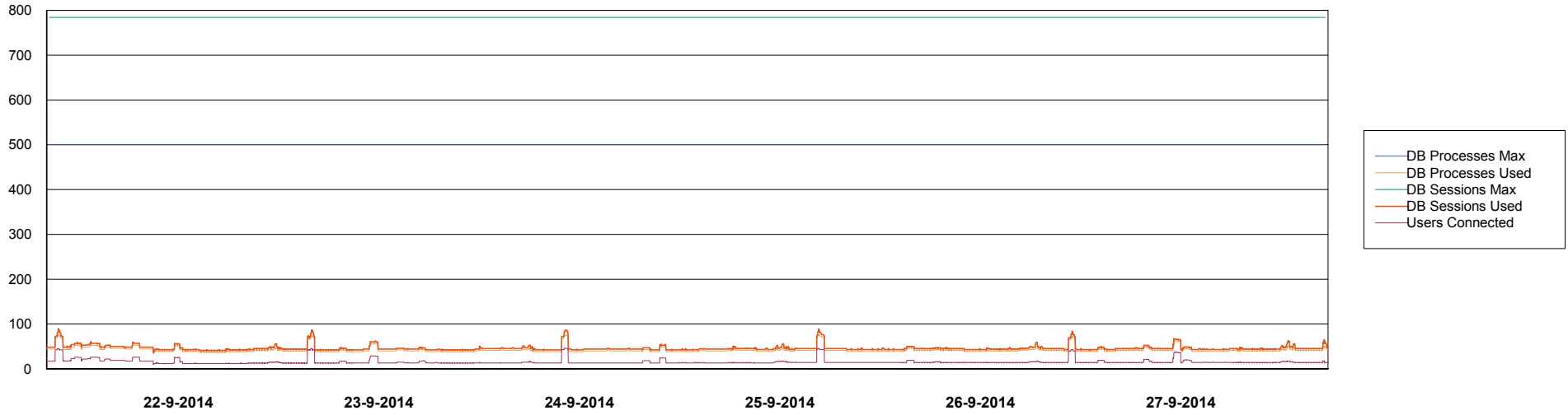
	Total disk space on C (GB)	Free disk space on C (GB)	Total disk space on D (GB)	Free disk space on D (GB)	Total disk space on E (GB)	Free disk space on E (GB)
27-9-2014	279	48	279	48	279	73
26-9-2014	279	48	279	48	279	107
25-9-2014	279	48	279	49	279	136
24-9-2014	279	48	279	49	279	164
23-9-2014	279	48	279	49	279	129
22-9-2014	279	48	279	49	279	65
21-9-2014	279	48	279	49	279	53

# Weekly SLA Customer Report

Customer NIX\_Production  
Database ID 51



DATABASE PERFORMANCE NIXDB\_BI



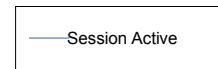
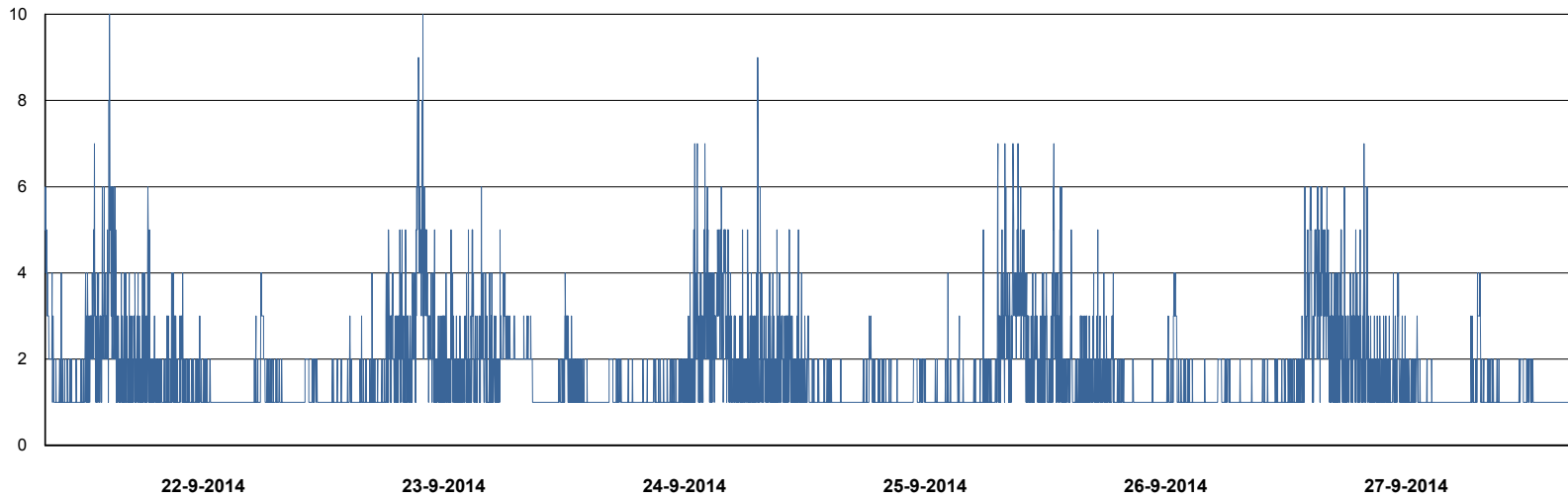
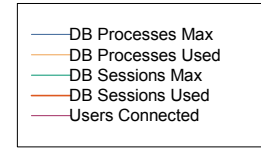
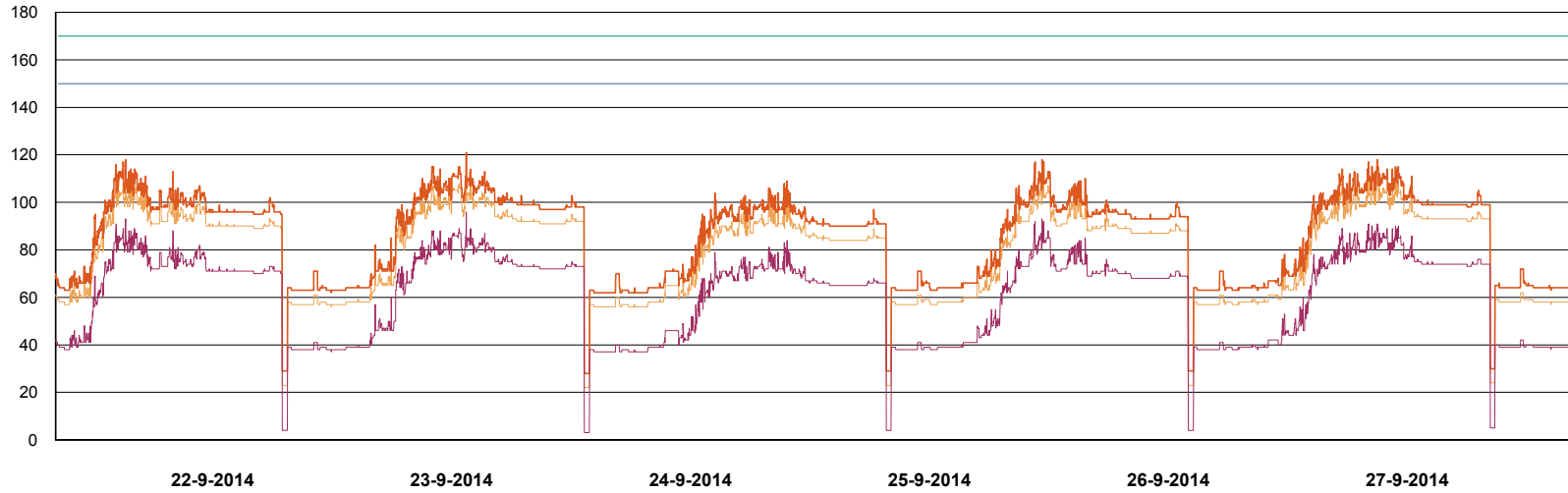
# Weekly SLA Customer Report

Customer NIX\_Production  
Database ID 51



## DATABASE PERFORMANCE

NIXDB\_Production

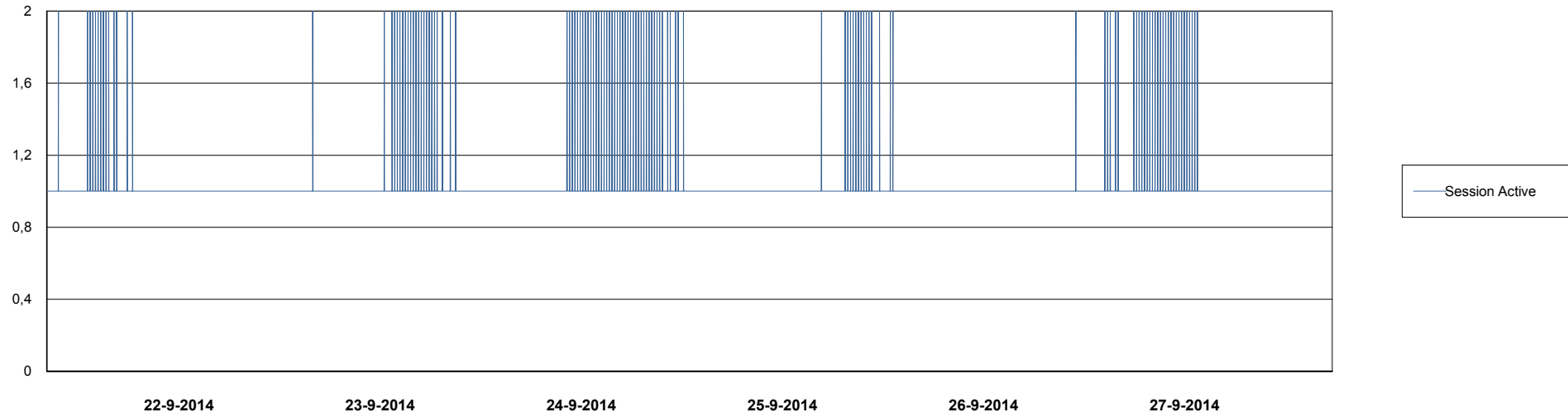
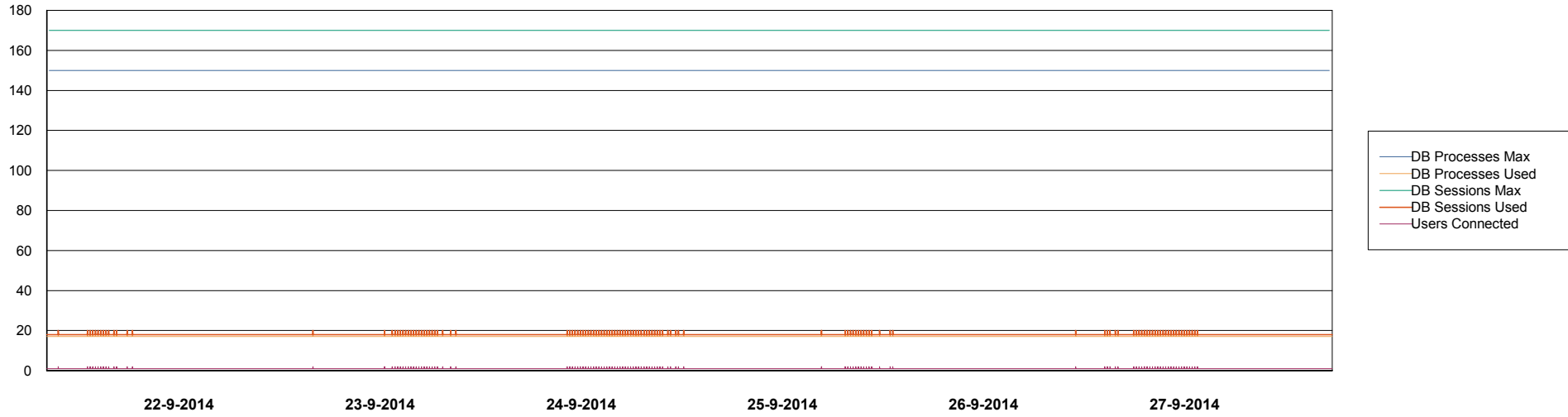


# Weekly SLA Customer Report

Customer NIX\_Production  
Database ID 51



DATABASE PERFORMANCE NIXDB\_Standby





# Weekly SLA Customer Report

Customer NIX\_Production  
 Database ID 51



=====  
 DATABASE TABLESPACES NIXDB\_BI  
 =====  
 TOTAL DATABASE SIZE PER TABLESPACE

Date	Tablespace Name	Filesize (Gb)	Usedsize (Gb)	Percentage free
27-9-2014	ABSDATA	20	17	15
	INDX	40	27	33
26-9-2014	ABSDATA	20	17	15
	INDX	40	27	33
25-9-2014	ABSDATA	20	17	15
	INDX	40	27	33
24-9-2014	ABSDATA	20	17	15
	INDX	40	27	33
23-9-2014	ABSDATA	20	17	15
	INDX	40	27	33
22-9-2014	ABSDATA	20	17	15
	INDX	40	27	33
21-9-2014	ABSDATA	20	17	15
	INDX	40	27	33

# Weekly SLA Customer Report

Customer NIX\_Production  
 Database ID 51



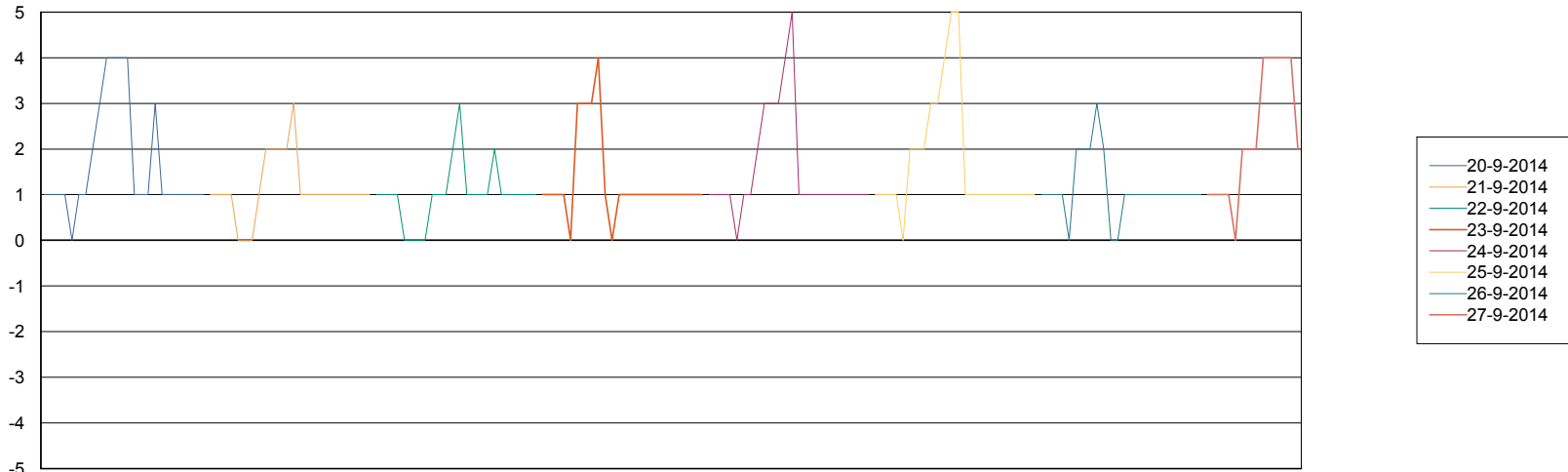
=====  
 DATABASE TABLESPACES NIXDB\_Production  
 =====

TOTAL DATABASE SIZE PER TABLESPACE

Date	Tablespace Name	Filesize (Gb)	Usedsize (Gb)	Percentage free
27-9-2014	ABSDATA	40	28	30
	INDX	97	75	23
26-9-2014	ABSDATA	40	28	30
	INDX	97	75	23
25-9-2014	ABSDATA	40	28	30
	INDX	97	75	23
24-9-2014	ABSDATA	40	28	30
	INDX	97	75	23
23-9-2014	ABSDATA	40	28	30
	INDX	97	75	23
22-9-2014	ABSDATA	40	28	30
	INDX	97	75	23
21-9-2014	ABSDATA	40	28	30
	INDX	97	75	23

=====  
 STANDBY DATABASE HEALTH NIX\_Production  
 =====

Recovery lag for last 7 days



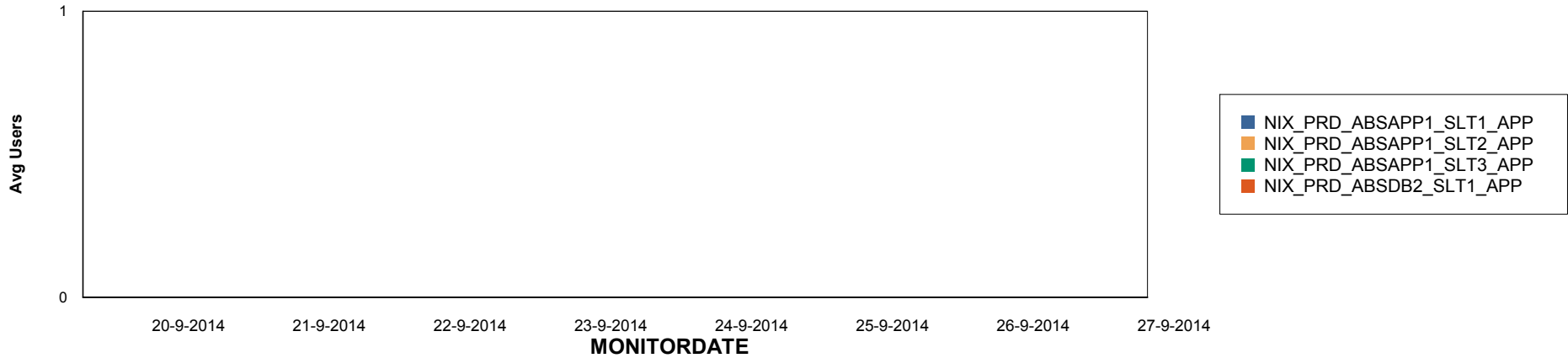
# Weekly SLA Customer Report

Customer NIX\_Production  
Database ID 51

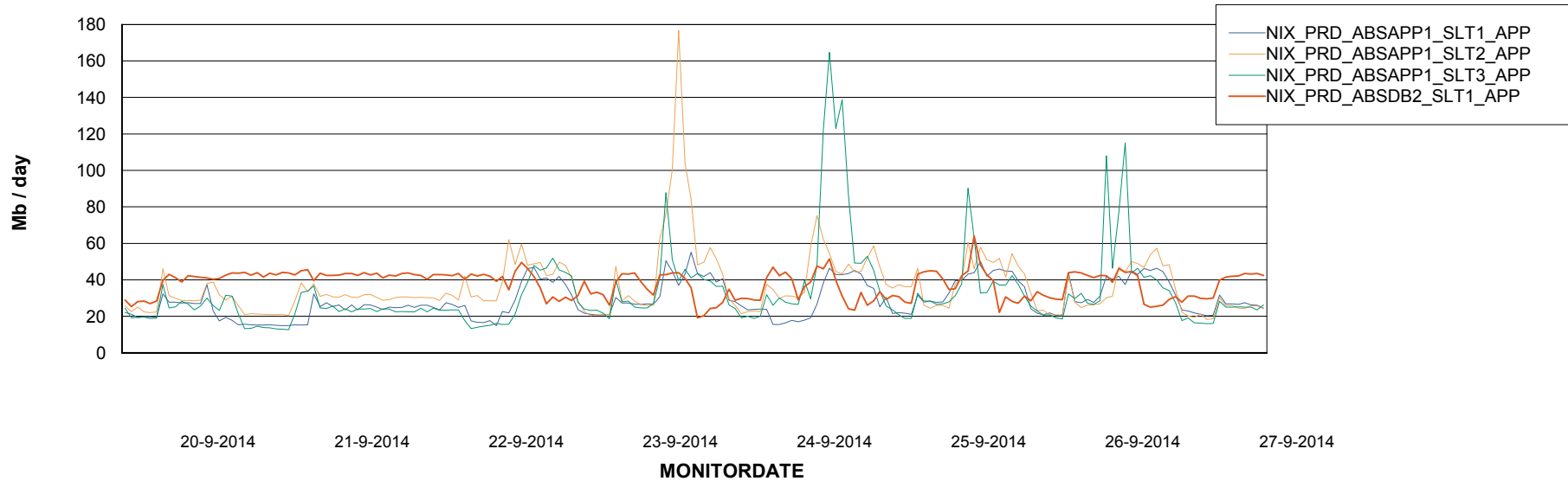


=====  
ABSolute Application Server Services  
=====

## Disaster per ABS Server



## Avg memory used per ABS Server Service



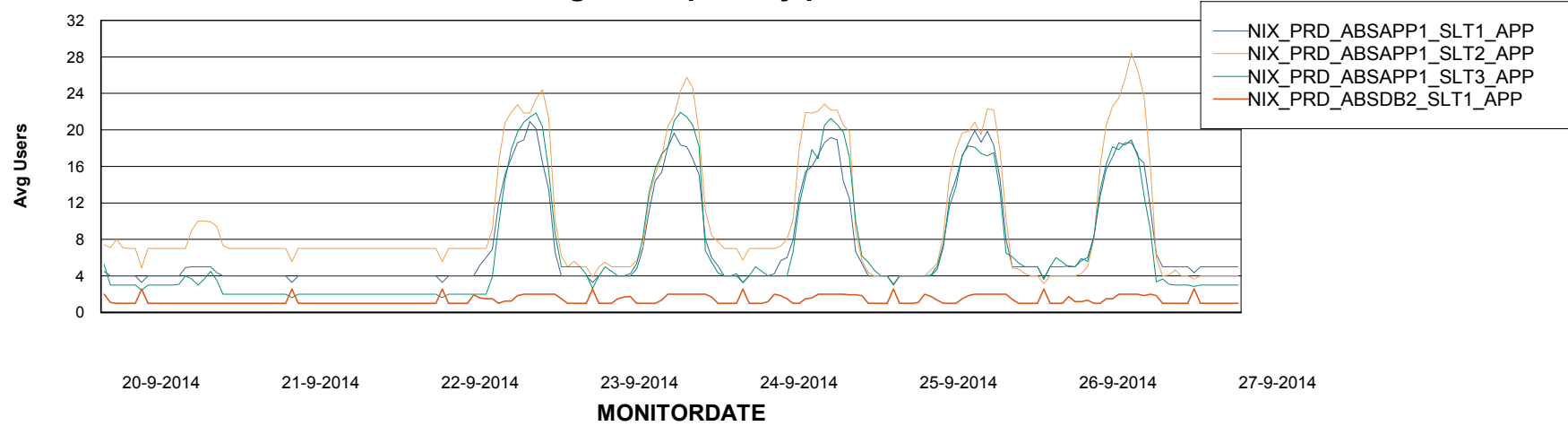
# Weekly SLA Customer Report

Customer NIX\_Production  
Database ID 51



=====  
ABSolute Application Server Services  
=====

### Avg users per day per ABS server



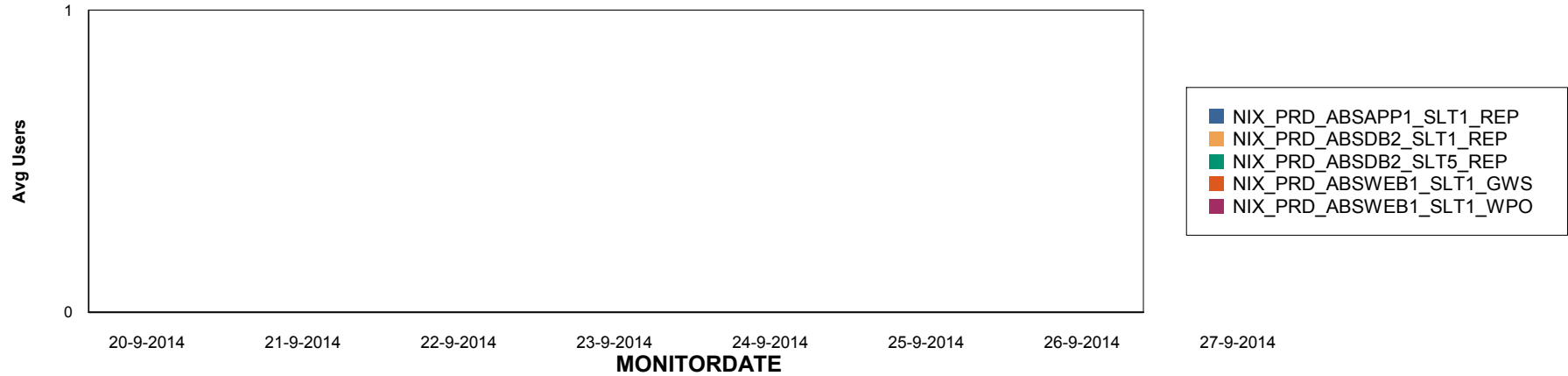
# Weekly SLA Customer Report

Customer NIX\_Production  
Database ID 51

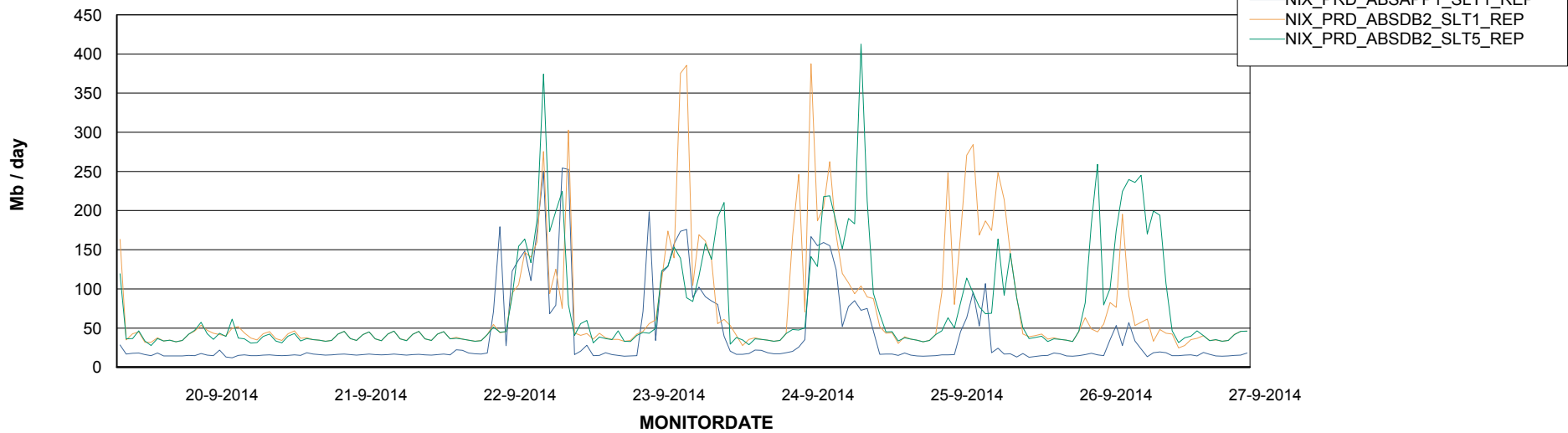


=====  
ABSolute Application ReportServer Services  
=====

## Disaster per ReportServer



## Avg memory used per ReportServer Service



# Weekly SLA Customer Report

Customer NIX\_Production  
Database ID 51



## Disaster per ABS component

