

## Weekly SLA Customer Report

Customer     JWR Production  
 Database ID    43



=====  
 HARDDISK USAGE    JWR\_PRD\_JWR-ABS-01  
 =====

	Used disk space on / (GB)	Total disk space on / (GB)	Free disk space on / (GB)
27-9-2014	27	49	20
26-9-2014	27	49	20
25-9-2014	27	49	20
24-9-2014	27	49	20
23-9-2014	27	49	20
22-9-2014	27	49	20
21-9-2014	27	49	20

=====  
 HARDDISK USAGE    JWR\_PRD\_JWR-ABS-02  
 =====

	Used disk space on / (GB)	Total disk space on / (GB)	Free disk space on / (GB)
27-9-2014	25	49	22
26-9-2014	25	49	22
25-9-2014	25	49	22
24-9-2014	25	49	22
23-9-2014	25	49	22
22-9-2014	25	49	22
21-9-2014	25	49	22

## Weekly SLA Customer Report

Customer      JWR Production  
 Database ID    43



=====

HARDDISK USAGE    JWR\_PRD\_JWR-ODB-01

=====

	Used disk space on / (GB)	Total disk space on / (GB)	Free disk space on / (GB)
27-9-2014	74	90	12
26-9-2014	74	90	12
25-9-2014	74	90	12
24-9-2014	74	90	12
23-9-2014	74	90	12
22-9-2014	74	90	11
21-9-2014	74	90	12

=====

HARDDISK USAGE    JWR\_PRD\_JWR-ODB-02

=====

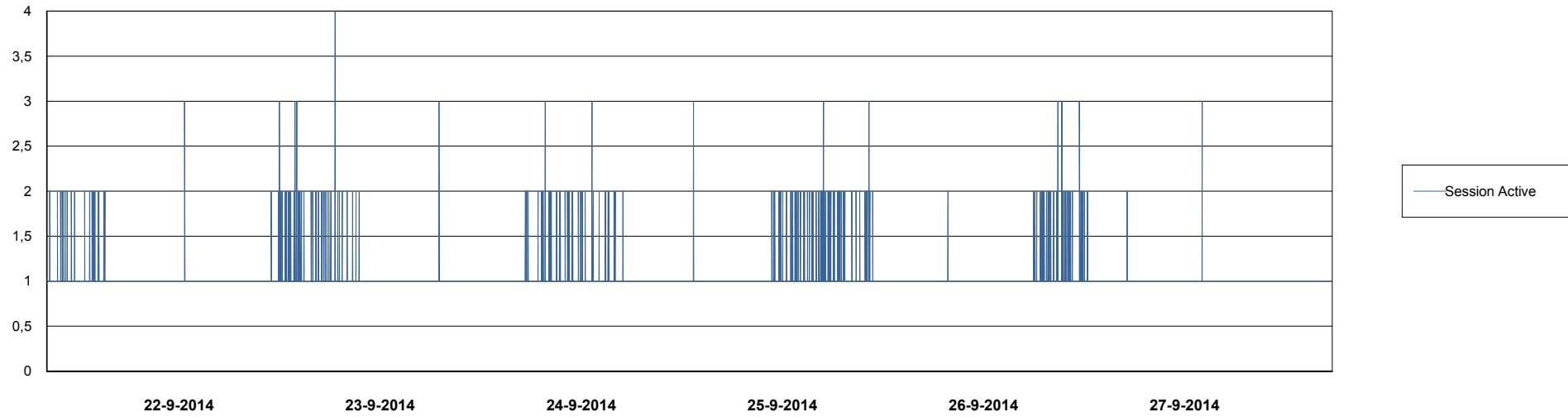
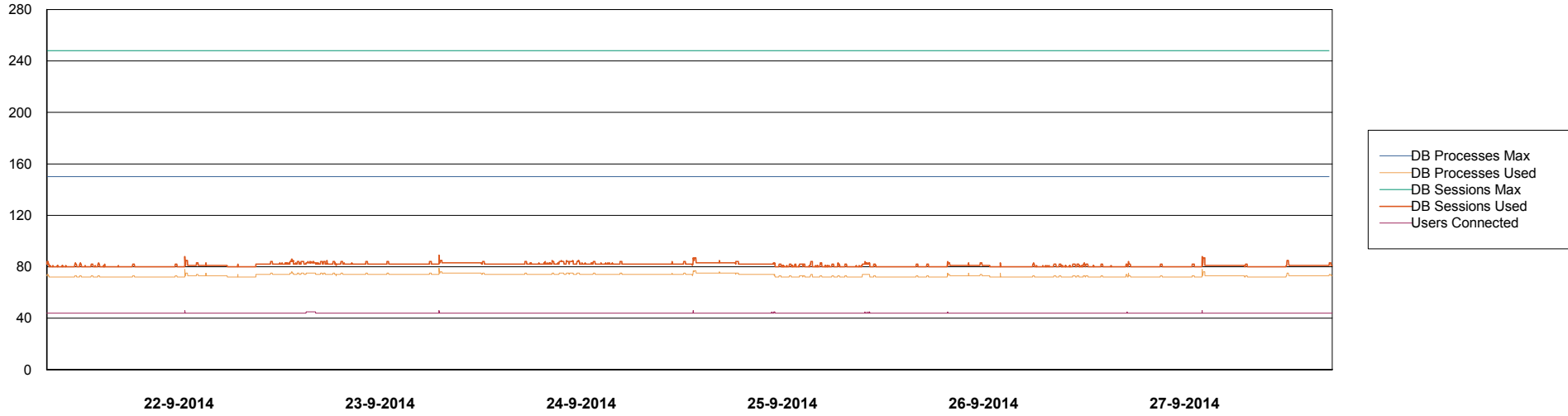
	Used disk space on / (GB)	Total disk space on / (GB)	Free disk space on / (GB)
27-9-2014	91	138	40
26-9-2014	91	138	40
25-9-2014	91	138	40
24-9-2014	91	138	40
23-9-2014	91	138	40
22-9-2014	91	138	39
21-9-2014	91	138	40

# Weekly SLA Customer Report

Customer JWR Production  
Database ID 43



DATABASE PERFORMANCE JWRDB\_Production



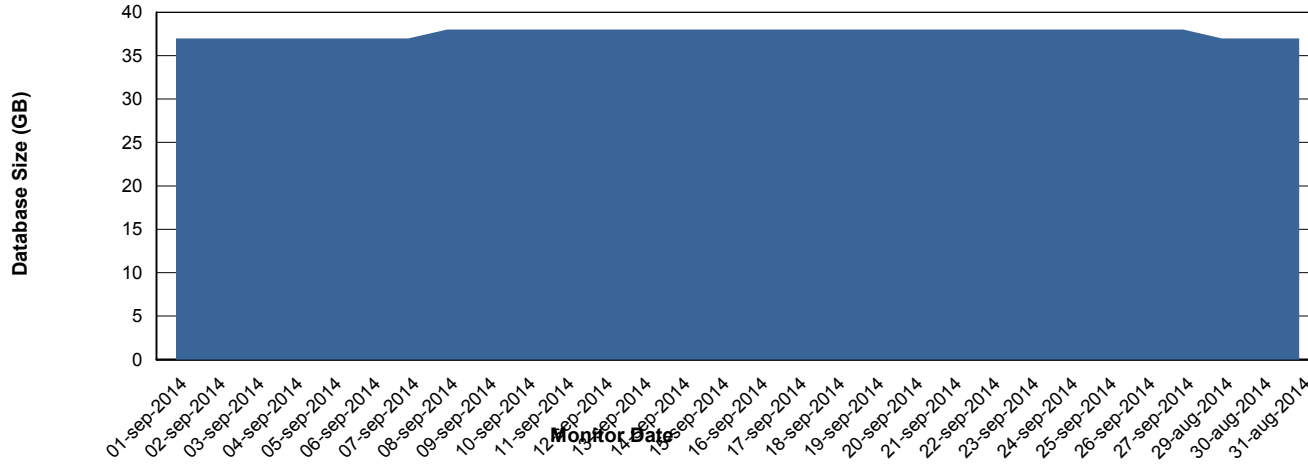
# Weekly SLA Customer Report

Customer JWR Production  
 Database ID 43



=====  
 DATABASE SIZE JWRDB\_Production  
 =====

## Database growth over last month



=====  
 DATABASE TABLESPACES JWRDB\_Production  
 =====

### TOTAL DATABASE SIZE PER TABLESPACE

Date	Tablespace Name	Filesize (Gb)	Usedsize (Gb)	Percentage free
27-9-2014	ABSDATA	15	11	27
	INDX	32	26	19
26-9-2014	ABSDATA	15	11	27
	INDX	32	26	19
25-9-2014	ABSDATA	15	11	27
	INDX	32	26	19
24-9-2014	ABSDATA	15	11	27
	INDX	32	26	19
23-9-2014	ABSDATA	15	11	27
	INDX	32	26	19
22-9-2014	ABSDATA	15	11	27
	INDX	32	26	19
21-9-2014	ABSDATA	15	11	27
	INDX	32	26	19

## Weekly SLA Customer Report

---

Customer     JWR Production  
Database ID   43



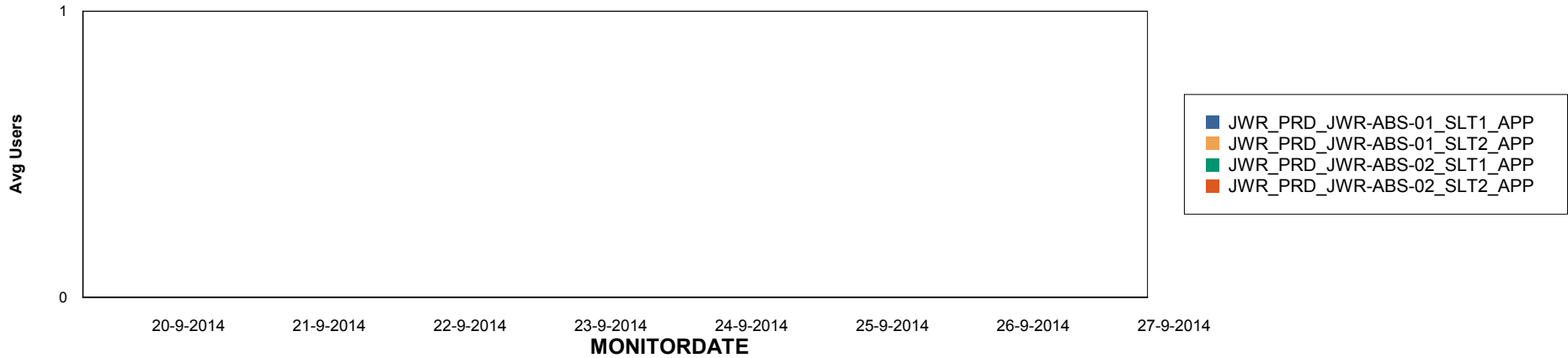
# Weekly SLA Customer Report

Customer JWR Production  
Database ID 43

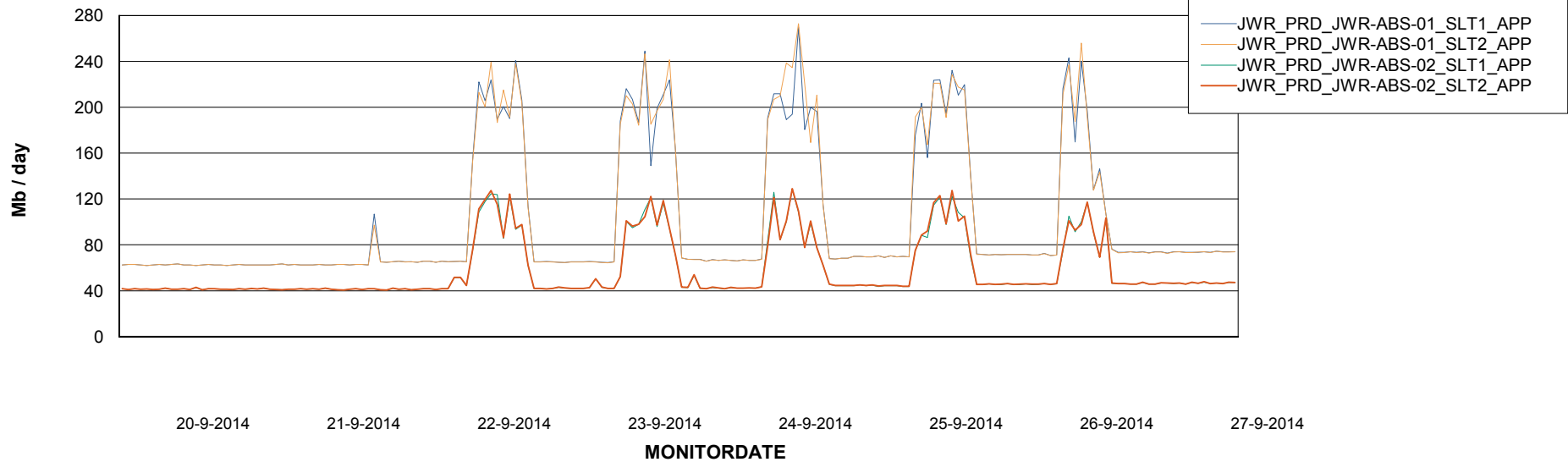


=====  
ABSolute Application Server Services  
=====

## Disaster per ABS Server



## Avg memory used per ABS Server Service



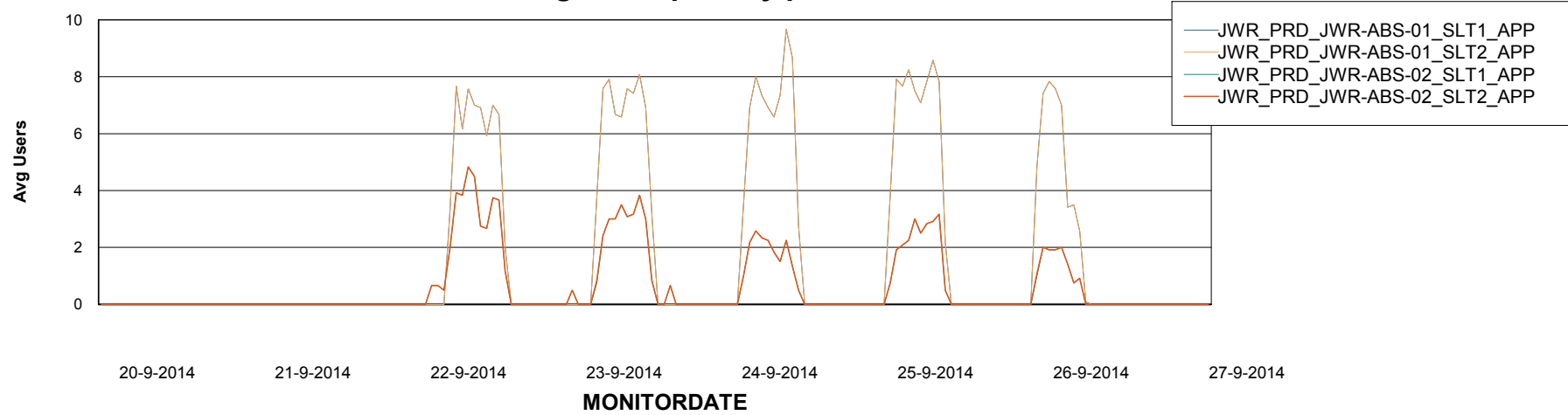
# Weekly SLA Customer Report

Customer JWR Production  
Database ID 43



=====  
ABSolute Application Server Services  
=====

### Avg users per day per ABS server



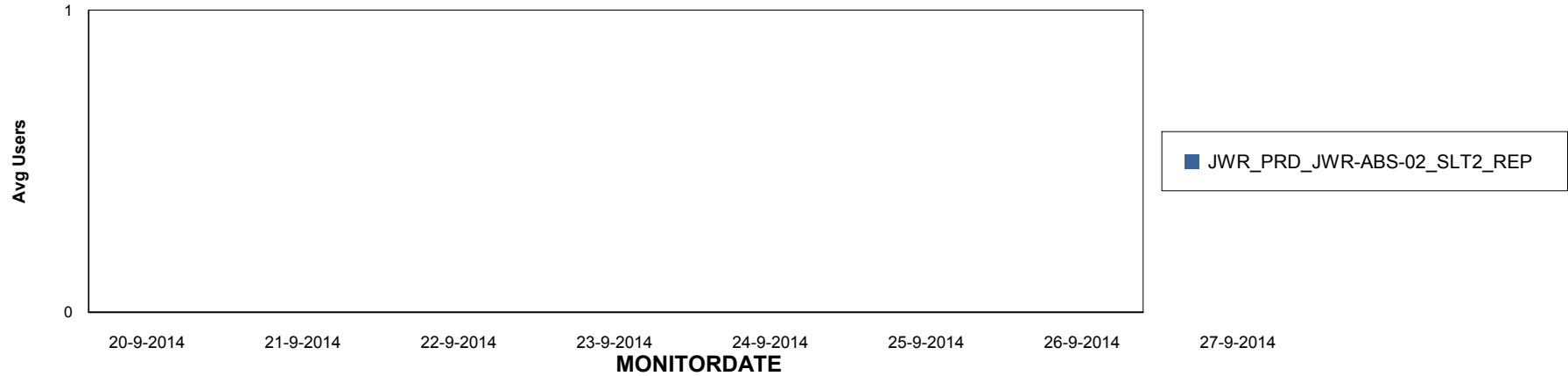
# Weekly SLA Customer Report

Customer JWR Production  
Database ID 43

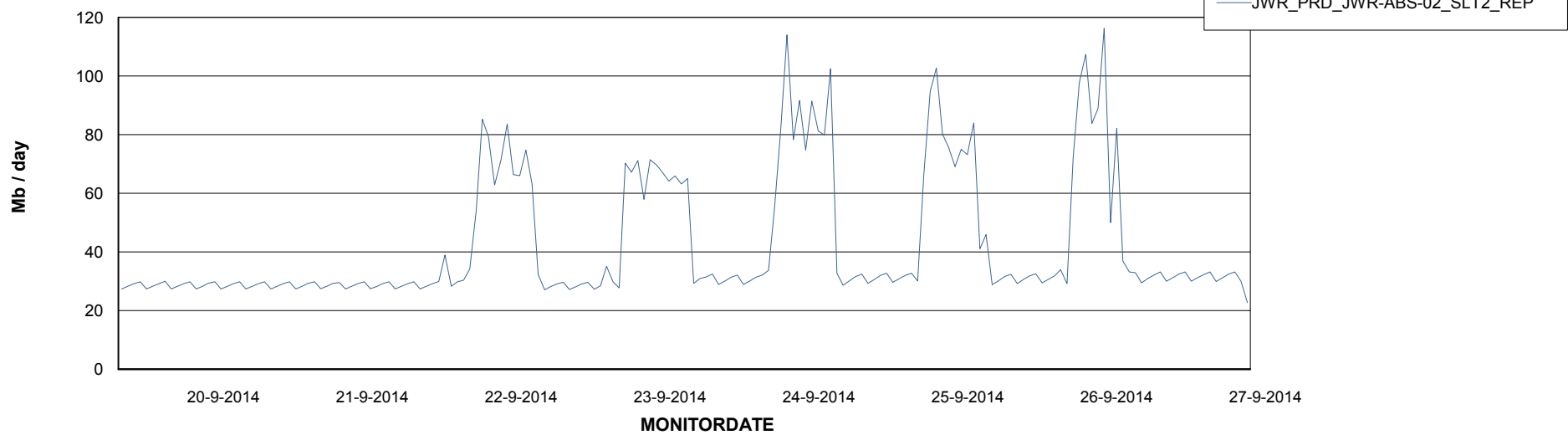


=====  
ABSolute Application ReportServer Services  
=====

## Disaster per ReportServer



## Avg memory used per ReportServer Service



# Weekly SLA Customer Report

Customer JWR Production  
Database ID 43



## Disaster per ABS component

