

# Weekly SLA Customer Report

Customer PCO Production  
 Database ID 44



=====  
 HARDDISK USAGE PCO\_PRD\_ORACLE1  
 =====

	Total disk space on C (GB)	Free disk space on C (GB)	Total disk space on D (GB)	Free disk space on D (GB)
20-9-2014	279	218	838	205
19-9-2014	279	218	838	206
18-9-2014	279	218	838	209
17-9-2014	279	218	838	212
16-9-2014	279	218	838	215
15-9-2014	279	218	838	219
14-9-2014	279	218	838	222

=====  
 HARDDISK USAGE PCO\_PRD\_ORACLE2  
 =====

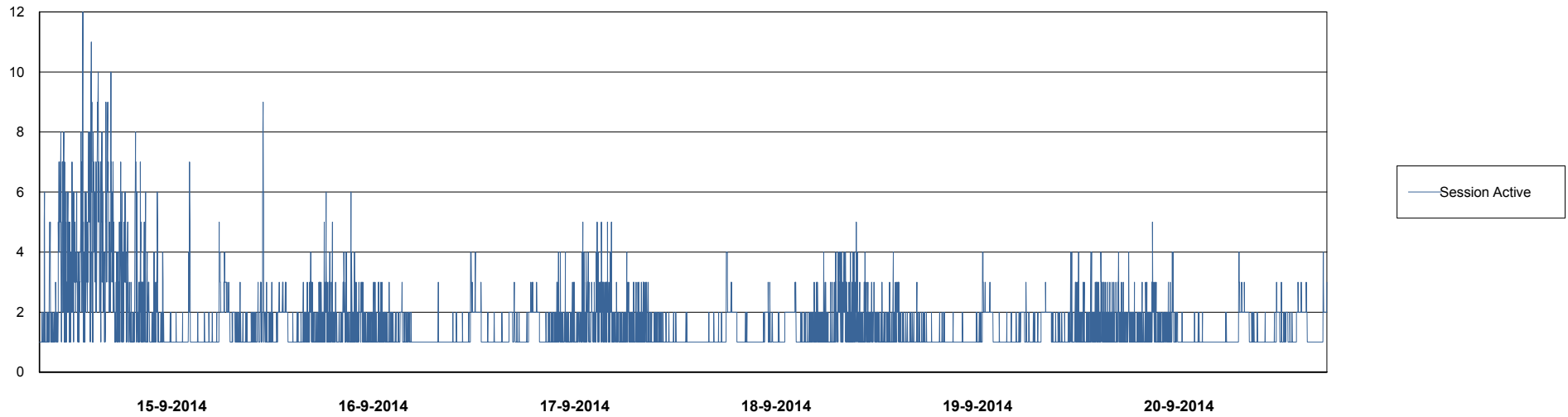
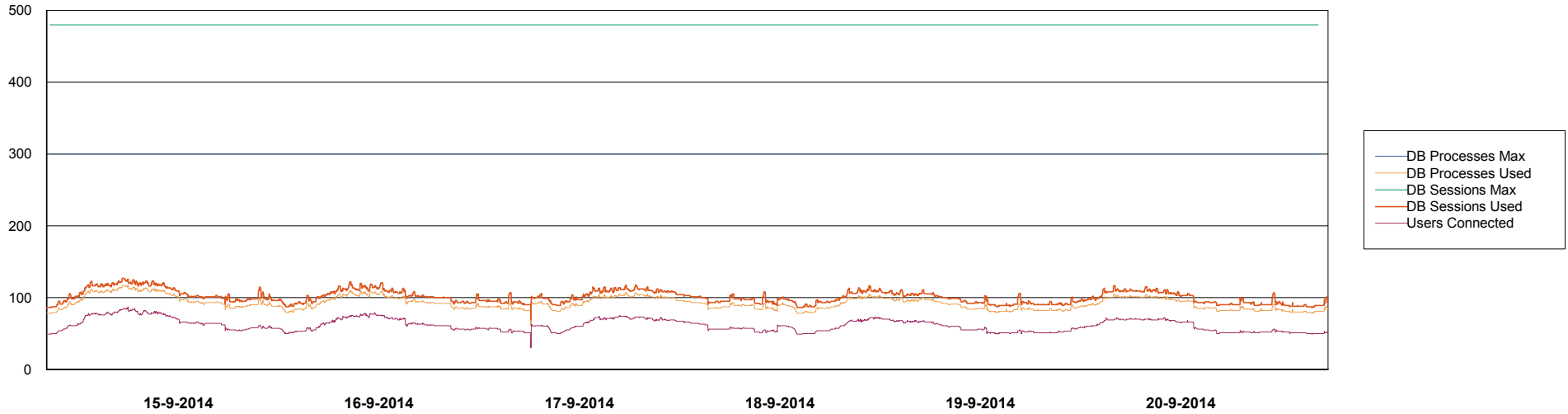
	Total disk space on C (GB)	Free disk space on C (GB)	Total disk space on D (GB)	Free disk space on D (GB)
20-9-2014	279	224	838	465
19-9-2014	279	224	838	467
18-9-2014	279	224	838	470
17-9-2014	279	224	838	473
16-9-2014	279	224	838	476
15-9-2014	279	224	838	480
14-9-2014	279	224	838	483

# Weekly SLA Customer Report

Customer PCO Production  
Database ID 44



DATABASE PERFORMANCE PCODB\_Production

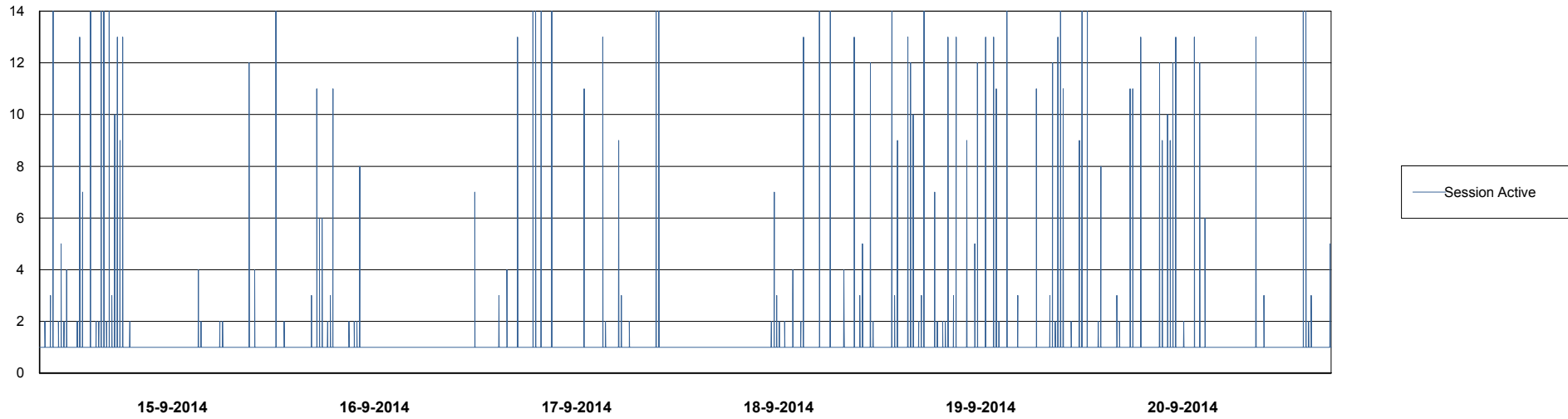
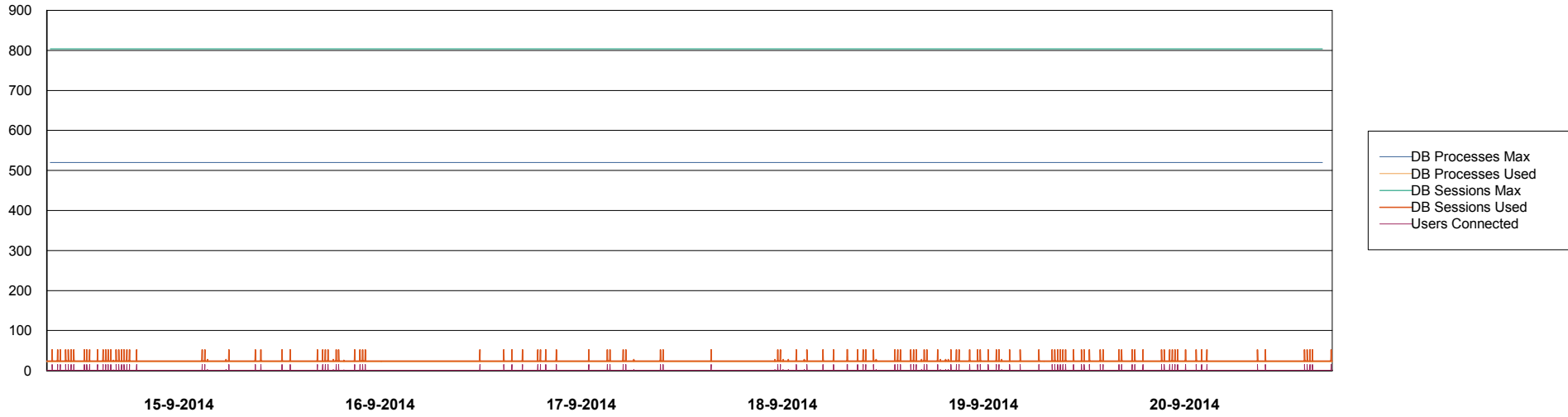


# Weekly SLA Customer Report

Customer PCO Production  
Database ID 44



DATABASE PERFORMANCE PCODB\_Standby



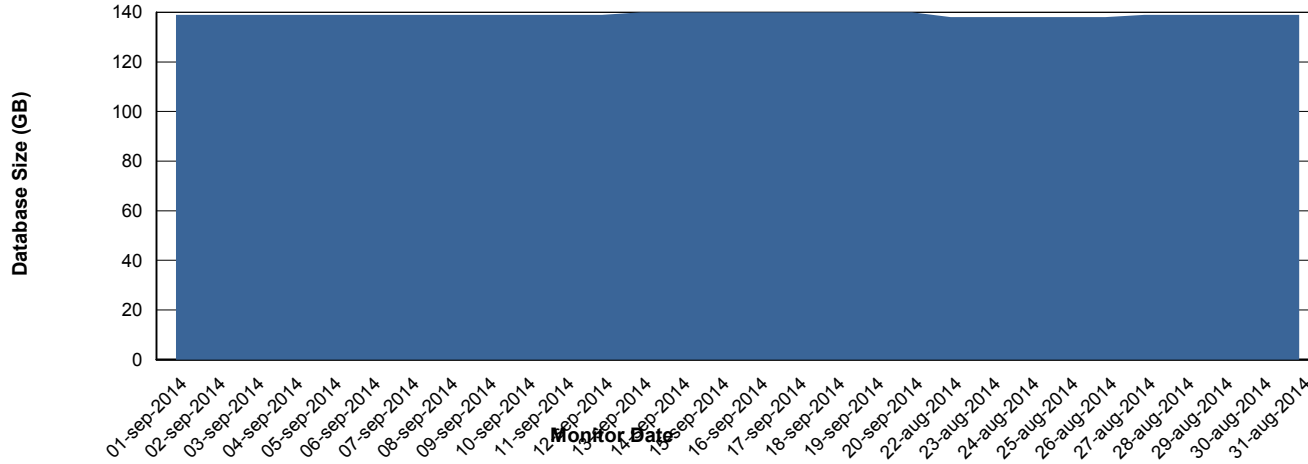
# Weekly SLA Customer Report

Customer PCO Production  
 Database ID 44



=====  
 DATABASE SIZE PCODB\_Production  
 =====

## Database growth over last month



=====  
 DATABASE TABLESPACES PCODB\_Production  
 =====

### TOTAL DATABASE SIZE PER TABLESPACE

Date	Tablespace Name	Filesize (Gb)	Usedsize (Gb)	Percentage free
20-9-2014	ABSDATA	72	58	19
	INDX	99	78	21
19-9-2014	ABSDATA	72	58	19
	INDX	99	78	21
18-9-2014	ABSDATA	72	58	19
	INDX	99	78	21
17-9-2014	ABSDATA	72	58	19
	INDX	99	78	21
16-9-2014	ABSDATA	72	57	21
	INDX	99	78	21
15-9-2014	ABSDATA	72	57	21
	INDX	99	78	21
14-9-2014	ABSDATA	72	57	21
	INDX	99	78	21

# Weekly SLA Customer Report

Customer PCO Production  
Database ID 44



=====  
STANDBY DATABASE HEALTH PCO Production  
=====

### Recovery lag for last 7 days

