

# Weekly SLA Customer Report

Customer NIX\_Production  
 Database ID 51



=====  
 HARDDISK USAGE NIX\_PRD\_ABSAPP1  
 =====

	Total disk space on C (GB)	Free disk space on C (GB)
20-9-2014	136	86
19-9-2014	136	86
18-9-2014	136	86
17-9-2014	136	86
16-9-2014	136	86
15-9-2014	136	86
14-9-2014	136	86

=====  
 HARDDISK USAGE NIX\_PRD\_ABSWEB1  
 =====

	Total disk space on C (GB)	Free disk space on C (GB)
20-9-2014	930	735
19-9-2014	930	736
18-9-2014	930	736
17-9-2014	930	736
16-9-2014	930	736
15-9-2014	930	736
14-9-2014	930	735

## Weekly SLA Customer Report

Customer      NIX\_Production  
 Database ID    51



=====  
 HARDDISK USAGE    NIX\_PRD\_ORACLE\_BI1  
 =====

	Total disk space on C (GB)	Free disk space on C (GB)	Total disk space on D (GB)	Free disk space on D (GB)	Total disk space on E (GB)	Free disk space on E (GB)
20-9-2014	40	7	279	180	236	169
19-9-2014	40	7	279	180	236	169
18-9-2014	40	7	279	180	236	169
17-9-2014	40	7	279	180	236	169
16-9-2014	40	7	279	180	236	169
15-9-2014	40	7	279	180	236	169
14-9-2014	40	7	279	180	236	169

=====  
 HARDDISK USAGE    NIX\_PRD\_ORCDB1  
 =====

	Total disk space on C (GB)	Free disk space on C (GB)	Total disk space on D (GB)	Free disk space on D (GB)	Total disk space on E (GB)	Free disk space on E (GB)
20-9-2014	136	21	136	35	136	99
19-9-2014	136	21	136	35	136	101
18-9-2014	136	21	136	35	136	101
17-9-2014	136	21	136	35	136	100
16-9-2014	136	21	136	35	136	100
15-9-2014	136	21	136	35	136	101
14-9-2014	136	21	136	35	136	101

## Weekly SLA Customer Report

Customer      NIX\_Production  
 Database ID    51



=====  
 HARDDISK USAGE    NIX\_PRD\_ORCDB2  
 =====

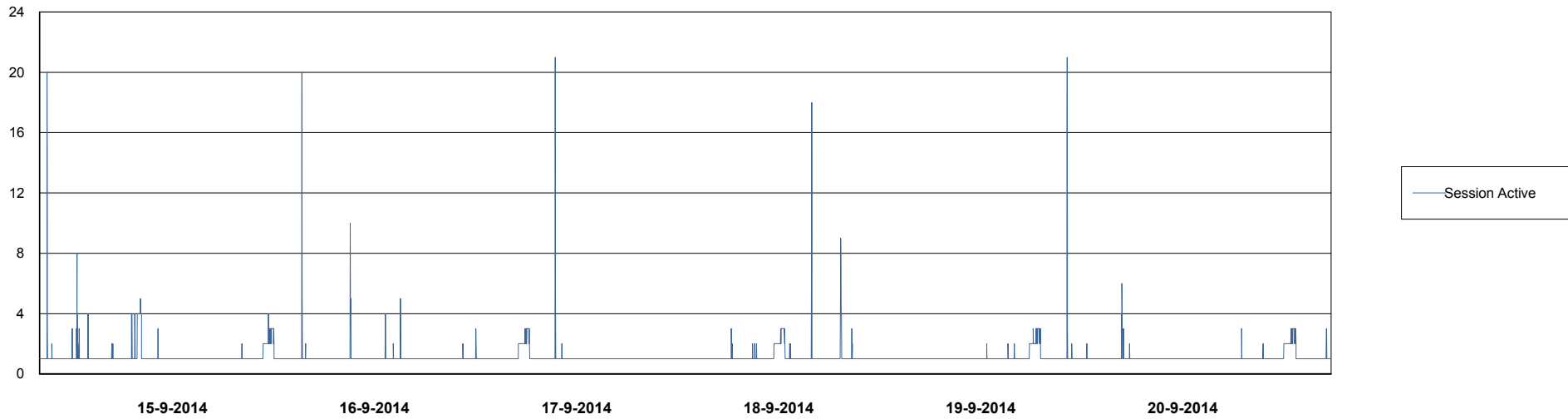
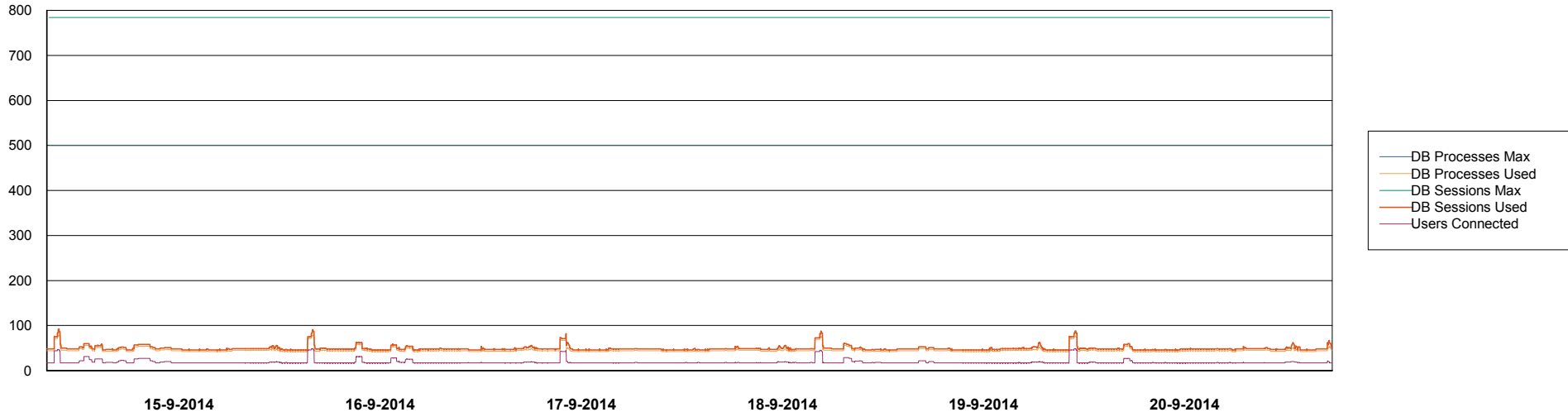
	Total disk space on C (GB)	Free disk space on C (GB)	Total disk space on D (GB)	Free disk space on D (GB)	Total disk space on E (GB)	Free disk space on E (GB)
20-9-2014	279	48	279	49	279	103
19-9-2014	279	48	279	49	279	136
18-9-2014	279	48	279	49	279	164
17-9-2014	279	48	279	49	279	126
16-9-2014	279	48	279	49	279	53
15-9-2014	279	48	279	49	279	82
14-9-2014	279	48	279	49	279	111

# Weekly SLA Customer Report

Customer NIX\_Production  
Database ID 51



DATABASE PERFORMANCE NIXDB\_BI

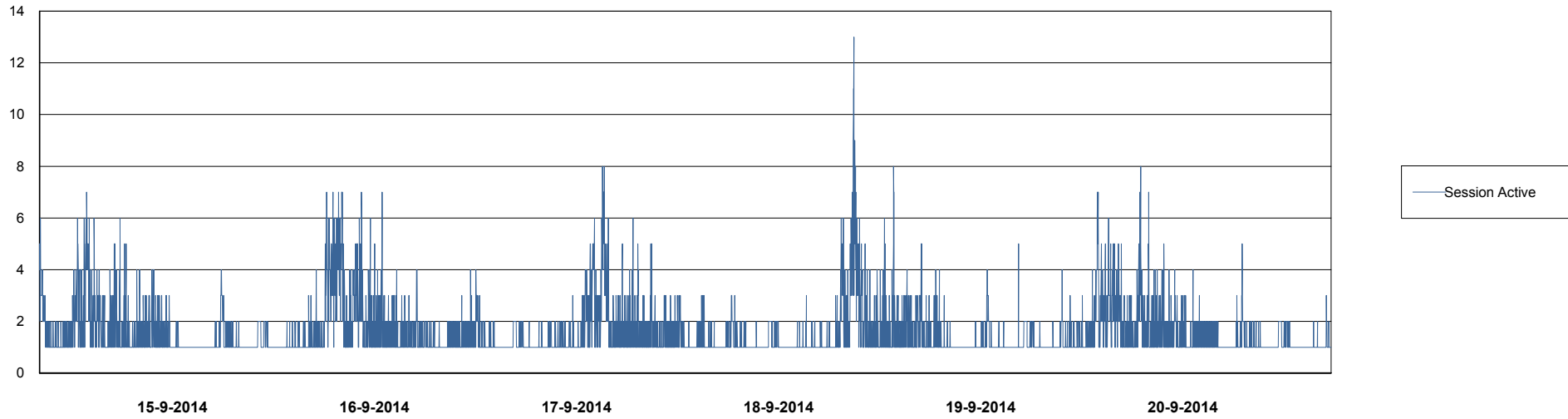
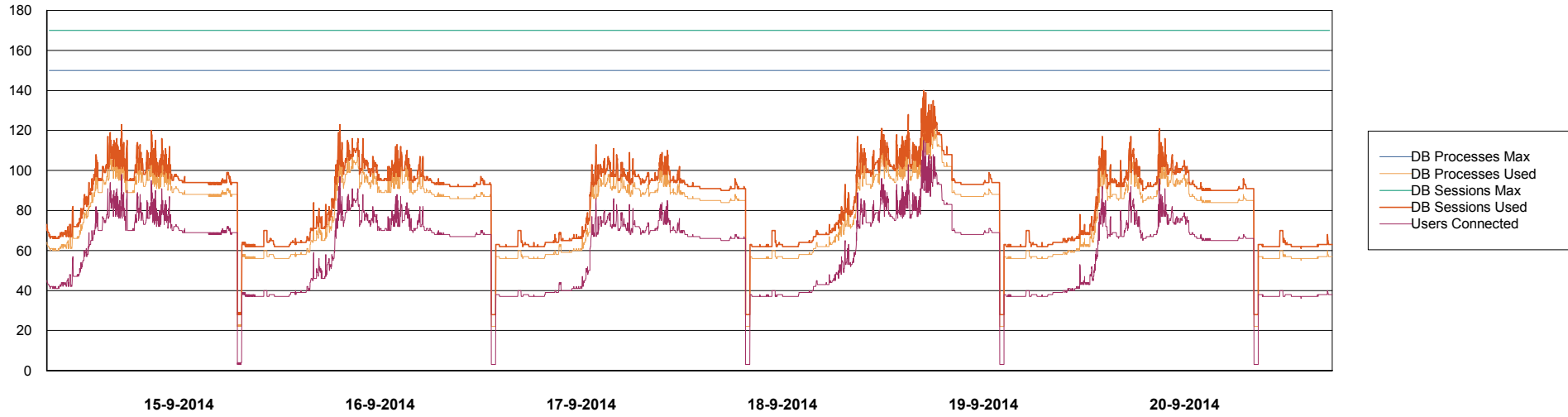


# Weekly SLA Customer Report

Customer NIX\_Production  
Database ID 51



DATABASE PERFORMANCE NIXDB\_Production

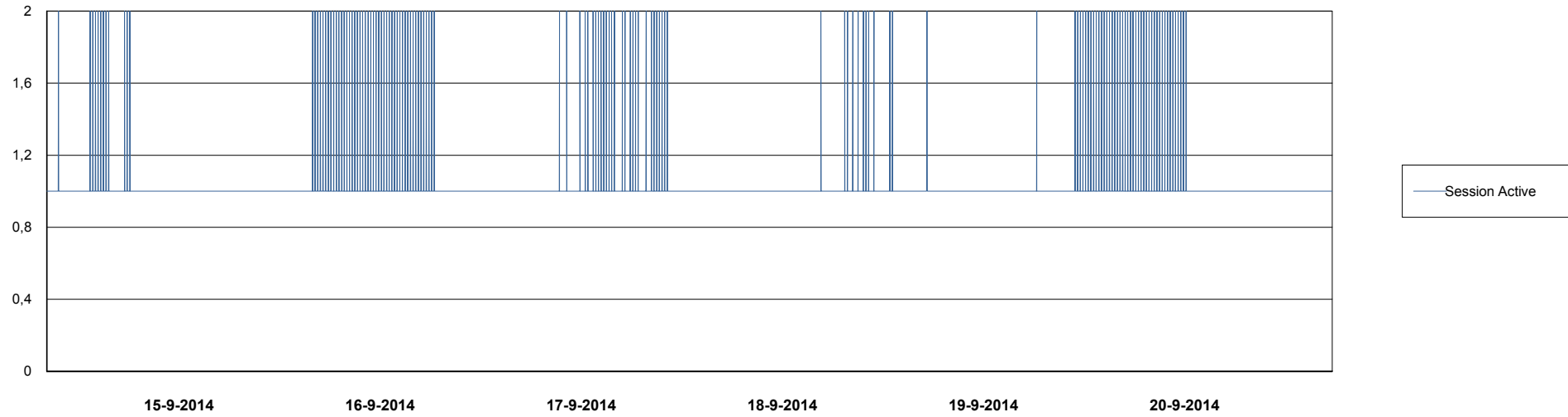
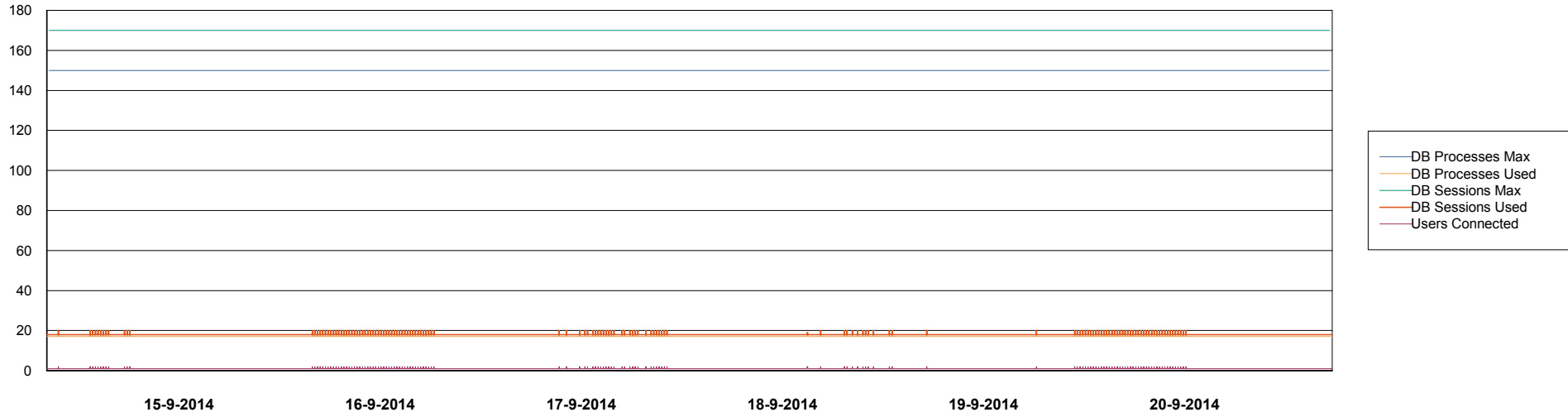


# Weekly SLA Customer Report

Customer NIX\_Production  
Database ID 51



## DATABASE PERFORMANCE NIXDB\_Standby





# Weekly SLA Customer Report

Customer NIX\_Production  
 Database ID 51



=====  
 DATABASE TABLESPACES NIXDB\_BI  
 =====

TOTAL DATABASE SIZE PER TABLESPACE

Date	Tablespace Name	Filesize (Gb)	Usedsize (Gb)	Percentage free
20-9-2014	ABSDATA	20	17	15
	INDX	40	27	33
19-9-2014	ABSDATA	20	17	15
	INDX	40	27	33
18-9-2014	ABSDATA	20	17	15
	INDX	40	27	33
17-9-2014	ABSDATA	20	17	15
	INDX	40	27	33
16-9-2014	ABSDATA	20	17	15
	INDX	40	27	33
15-9-2014	ABSDATA	20	17	15
	INDX	40	26	35
14-9-2014	ABSDATA	20	17	15
	INDX	40	26	35

# Weekly SLA Customer Report

Customer NIX\_Production  
 Database ID 51



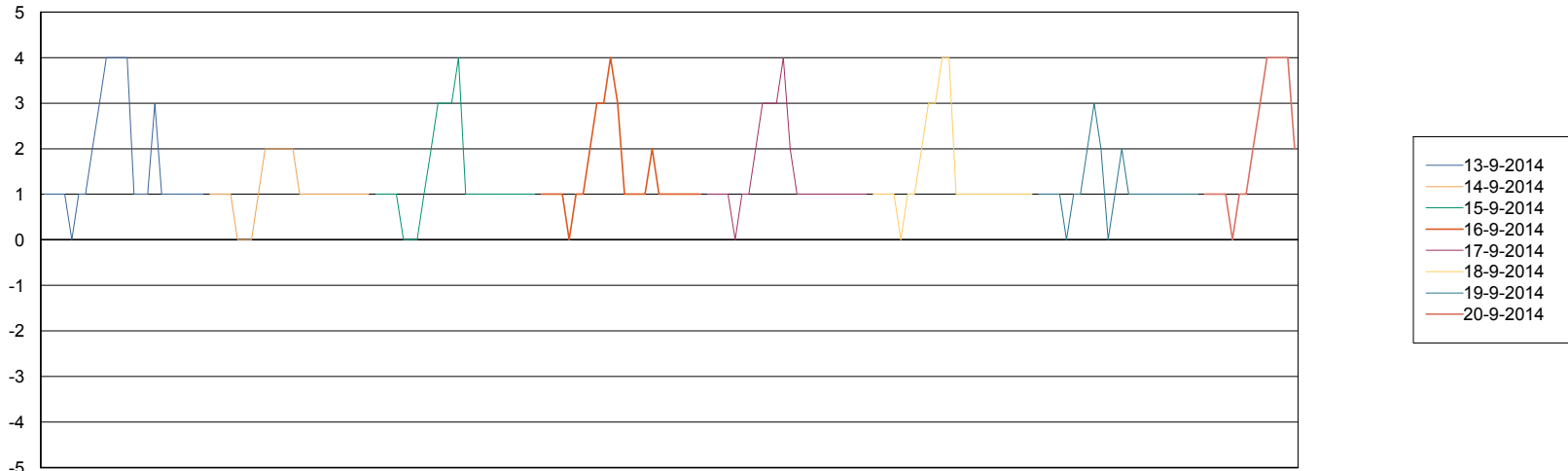
=====  
 DATABASE TABLESPACES NIXDB\_Production  
 =====

TOTAL DATABASE SIZE PER TABLESPACE

Date	Tablespace Name	Filesize (Gb)	Usedsize (Gb)	Percentage free
20-9-2014	ABSDATA	40	27	33
	INDX	97	75	23
19-9-2014	ABSDATA	40	27	33
	INDX	97	75	23
18-9-2014	ABSDATA	40	27	33
	INDX	97	75	23
17-9-2014	ABSDATA	40	27	33
	INDX	97	75	23
16-9-2014	ABSDATA	40	27	33
	INDX	97	75	23
15-9-2014	ABSDATA	40	27	33
	INDX	97	74	24
14-9-2014	ABSDATA	40	27	33
	INDX	97	74	24

=====  
 STANDBY DATABASE HEALTH NIX\_Production  
 =====

Recovery lag for last 7 days



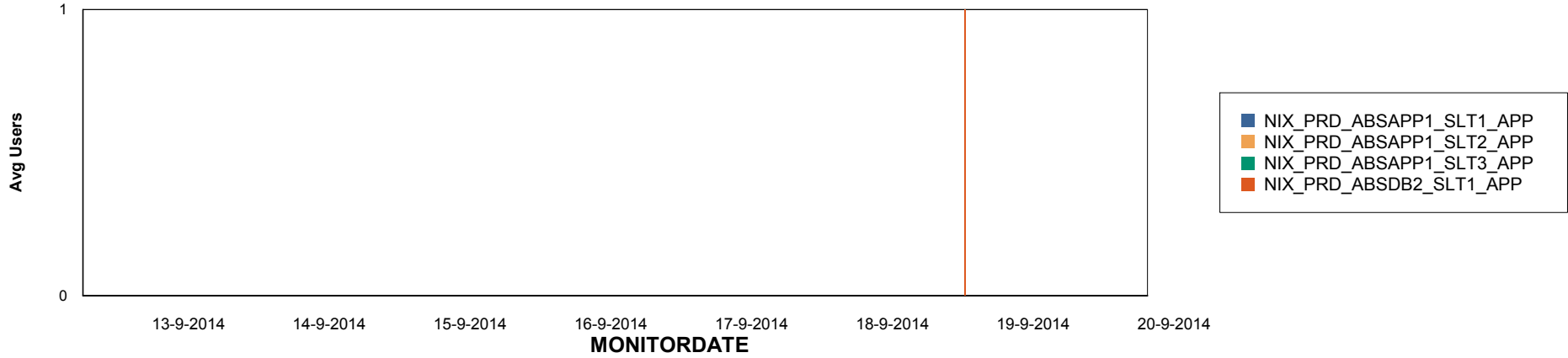
# Weekly SLA Customer Report

Customer NIX\_Production  
Database ID 51

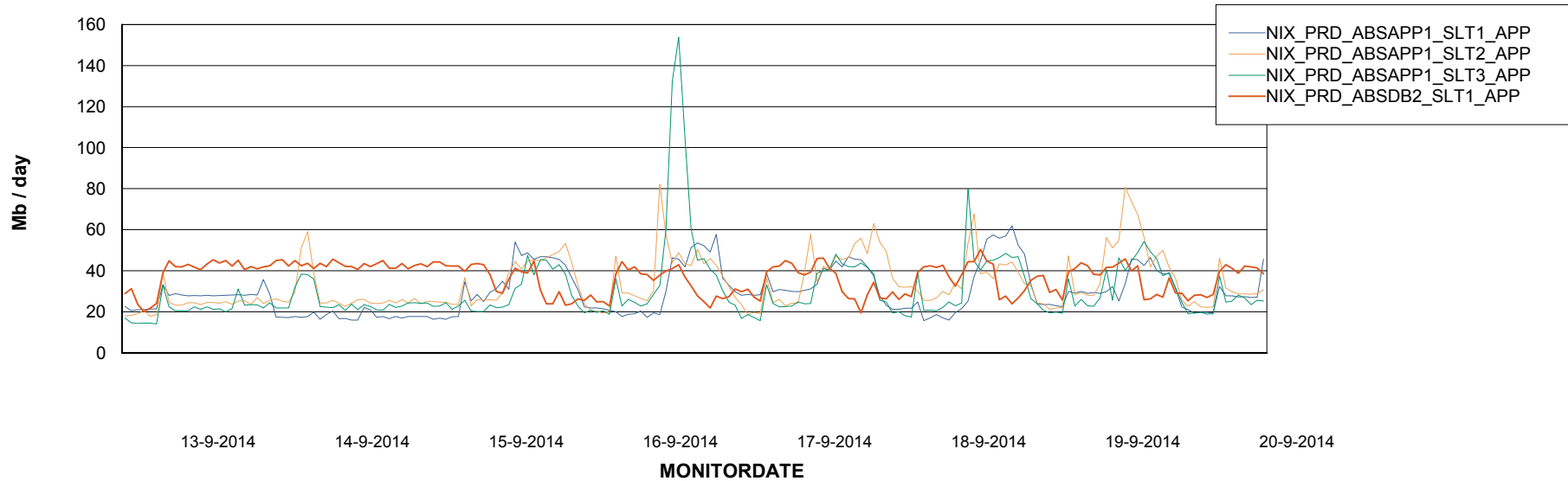


=====  
ABSolute Application Server Services  
=====

## Disaster per ABS Server



## Avg memory used per ABS Server Service



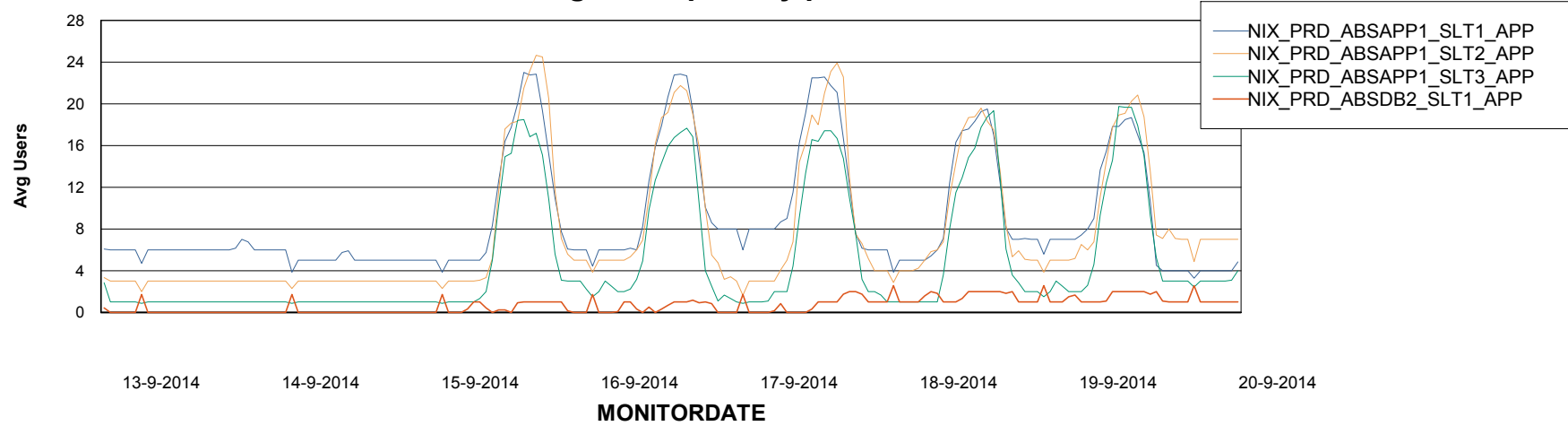
# Weekly SLA Customer Report

Customer NIX\_Production  
Database ID 51



=====  
ABSolute Application Server Services  
=====

### Avg users per day per ABS server



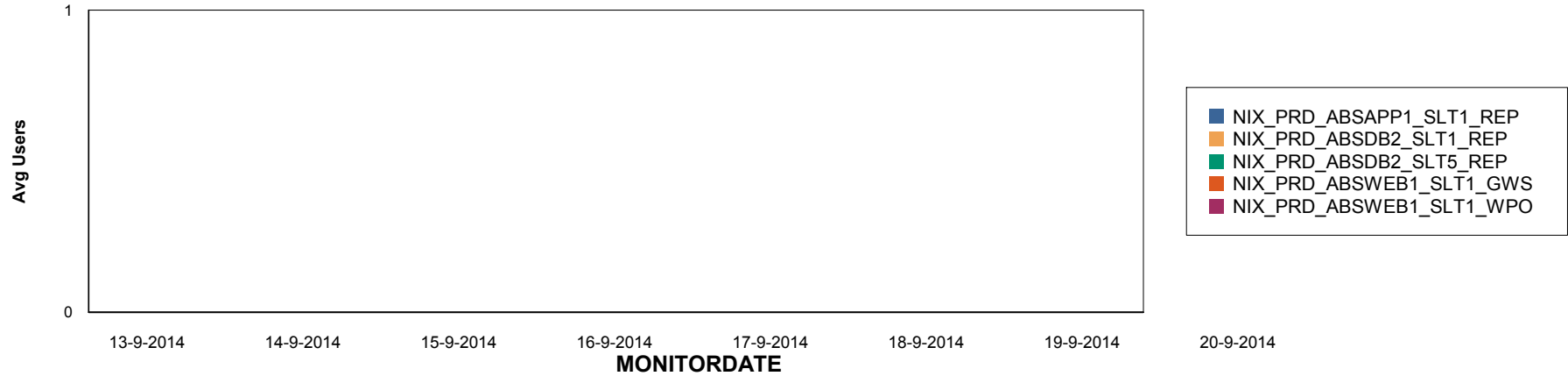
# Weekly SLA Customer Report

Customer NIX\_Production  
Database ID 51

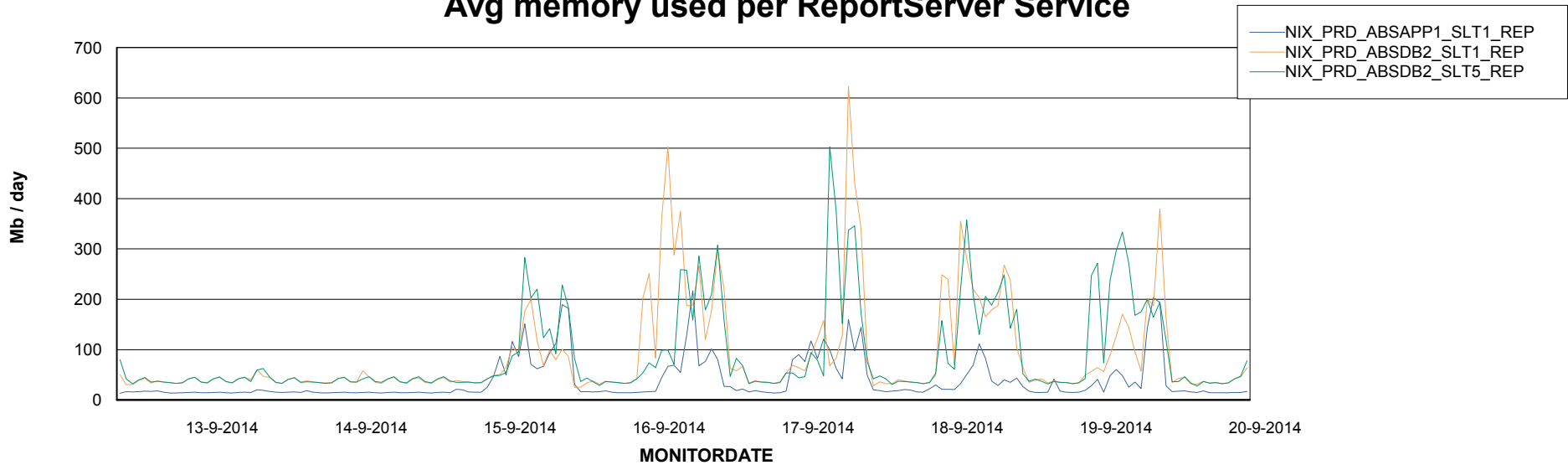


=====  
ABSolute Application ReportServer Services  
=====

## Disaster per ReportServer



## Avg memory used per ReportServer Service



# Weekly SLA Customer Report

Customer NIX\_Production  
Database ID 51



## Disaster per ABS component

