

Weekly SLA Customer Report

Customer JWR Production
 Database ID 43



=====
 HARDDISK USAGE JWR_PRD_JWR-ABS-01
 =====

	Used disk space on / (GB)	Total disk space on / (GB)	Free disk space on / (GB)
20-9-2014	27	49	20
19-9-2014	27	49	20
18-9-2014	27	49	20
17-9-2014	27	49	20
16-9-2014	27	49	20
15-9-2014	27	49	20
14-9-2014	27	49	20

=====
 HARDDISK USAGE JWR_PRD_JWR-ABS-02
 =====

	Used disk space on / (GB)	Total disk space on / (GB)	Free disk space on / (GB)
20-9-2014	25	49	22
19-9-2014	25	49	22
18-9-2014	25	49	22
17-9-2014	25	49	22
16-9-2014	25	49	22
15-9-2014	25	49	22
14-9-2014	25	49	22

Weekly SLA Customer Report

Customer JWR Production
 Database ID 43



=====

HARDDISK USAGE JWR_PRD_JWR-ODB-01

=====

	Used disk space on / (GB)	Total disk space on / (GB)	Free disk space on / (GB)
20-9-2014	74	90	12
19-9-2014	74	90	12
18-9-2014	74	90	12
17-9-2014	74	90	12
16-9-2014	74	90	12
15-9-2014	74	90	11
14-9-2014	74	90	12

=====

HARDDISK USAGE JWR_PRD_JWR-ODB-02

=====

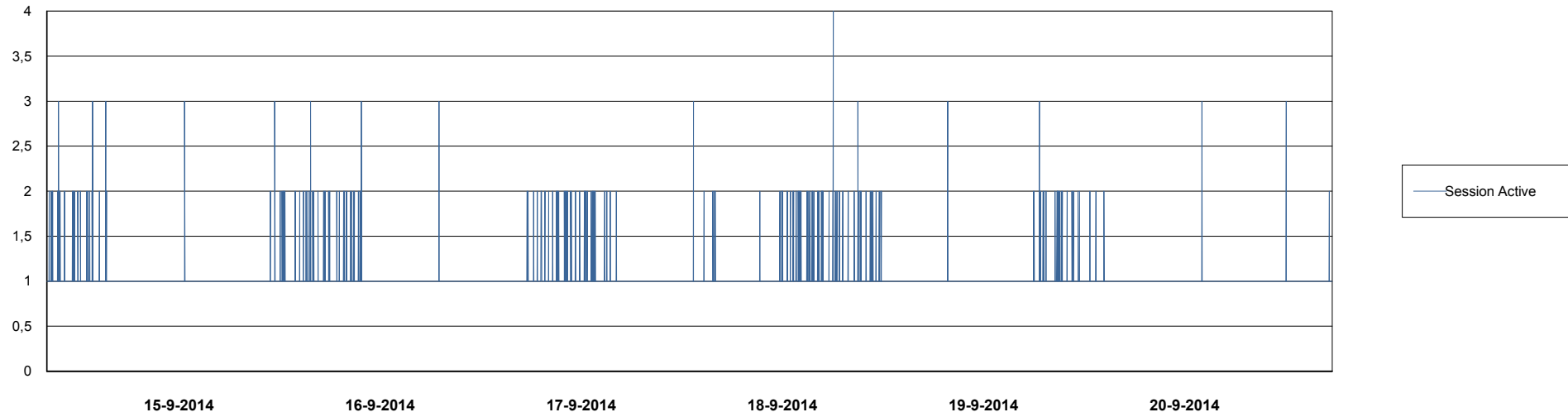
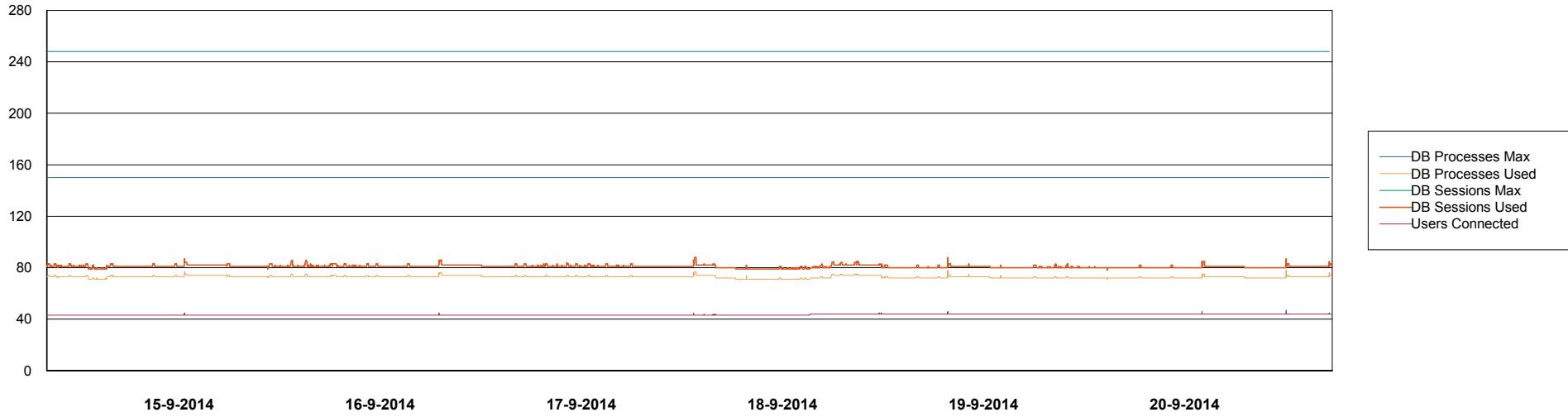
	Used disk space on / (GB)	Total disk space on / (GB)	Free disk space on / (GB)
20-9-2014	91	138	40
19-9-2014	91	138	40
18-9-2014	91	138	40
17-9-2014	91	138	40
16-9-2014	91	138	40
15-9-2014	91	138	40
14-9-2014	91	138	40

Weekly SLA Customer Report

Customer JWR Production
Database ID 43



DATABASE PERFORMANCE JWRDB_Production



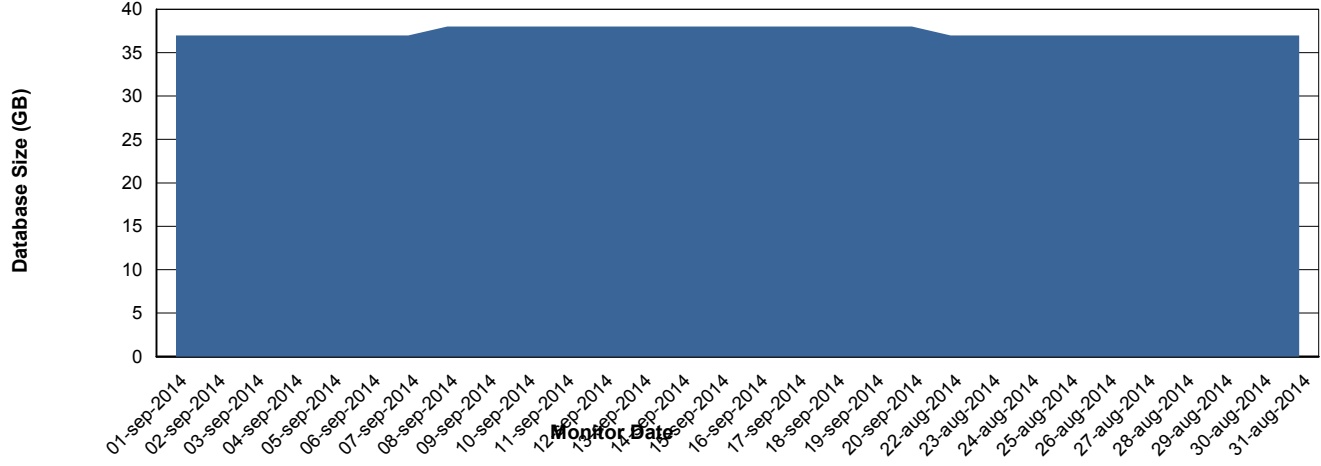
Weekly SLA Customer Report

Customer JWR Production
 Database ID 43



=====
 DATABASE SIZE JWRDB_Production
 =====

Database growth over last month



=====
 DATABASE TABLESPACES JWRDB_Production
 =====

TOTAL DATABASE SIZE PER TABLESPACE

Date	Tablespace Name	Filesize (Gb)	Usedsize (Gb)	Percentage free
20-9-2014	ABSDATA	15	11	27
	INDX	32	26	19
19-9-2014	ABSDATA	15	11	27
	INDX	32	26	19
18-9-2014	ABSDATA	15	11	27
	INDX	32	26	19
17-9-2014	ABSDATA	15	11	27
	INDX	32	26	19
16-9-2014	ABSDATA	15	11	27
	INDX	32	26	19
15-9-2014	ABSDATA	15	11	27
	INDX	32	26	19
14-9-2014	ABSDATA	15	11	27
	INDX	32	26	19

Weekly SLA Customer Report

Customer JWR Production
Database ID 43



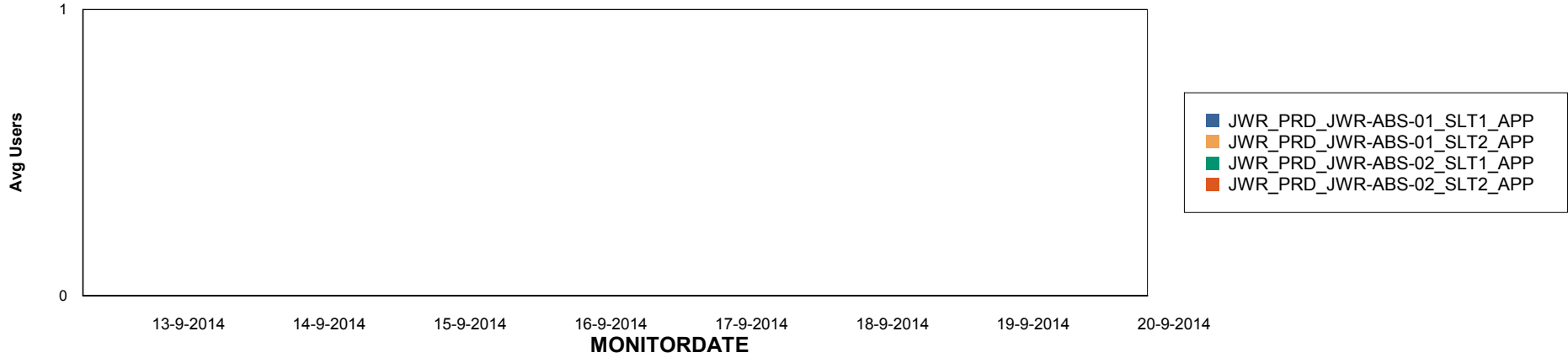
Weekly SLA Customer Report

Customer JWR Production
Database ID 43

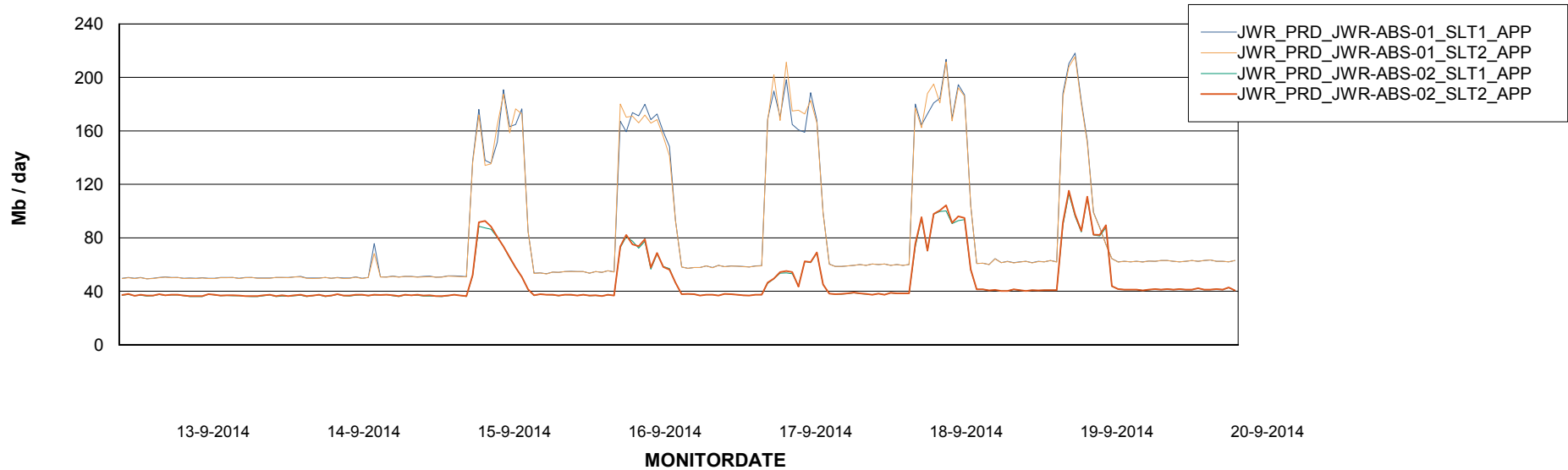


ABSolute Application Server Services

Disaster per ABS Server



Avg memory used per ABS Server Service



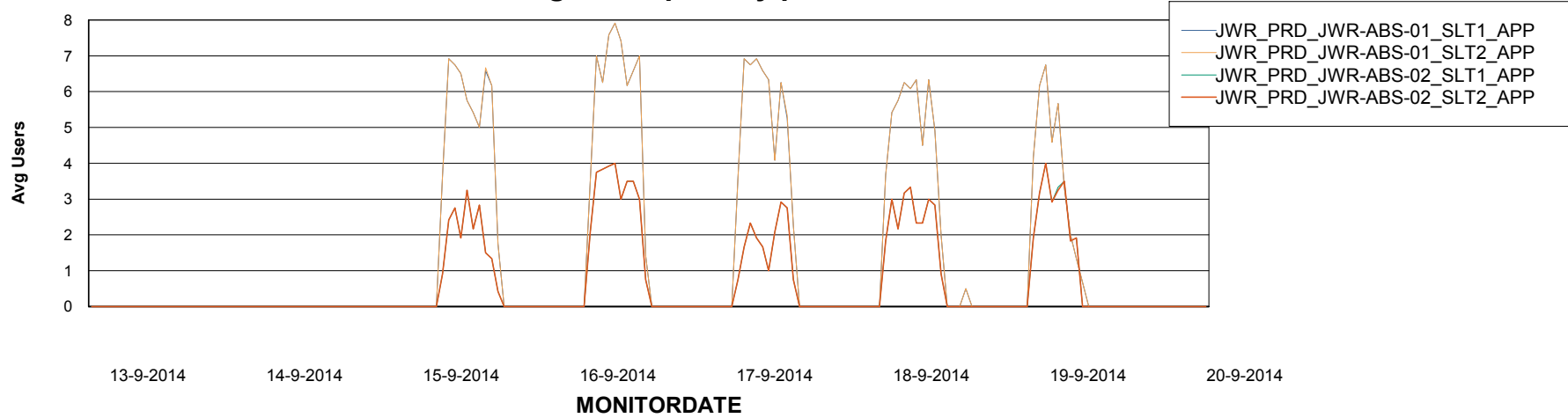
Weekly SLA Customer Report

Customer JWR Production
Database ID 43



=====
ABSolute Application Server Services
=====

Avg users per day per ABS server



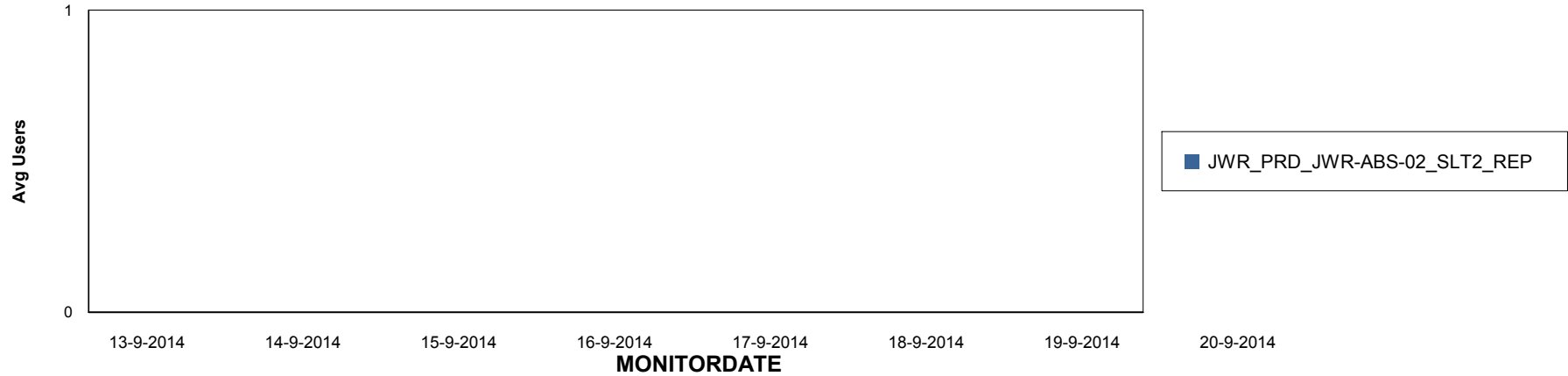
Weekly SLA Customer Report

Customer JWR Production
Database ID 43

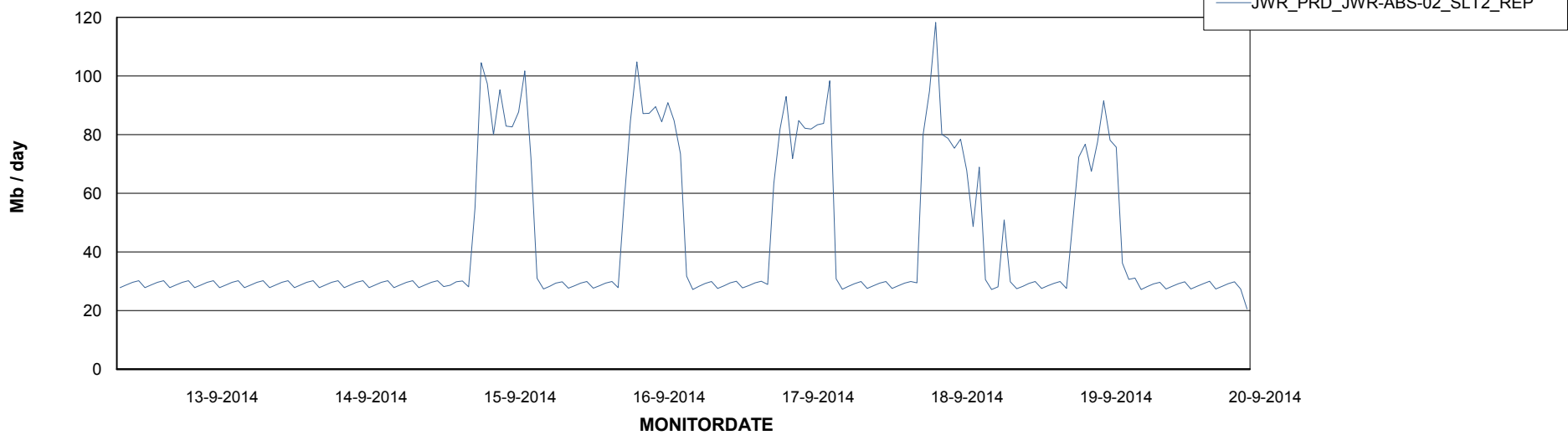


=====
ABSolute Application ReportServer Services
=====

Disaster per ReportServer



Avg memory used per ReportServer Service



Weekly SLA Customer Report

Customer JWR Production
Database ID 43



Disaster per ABS component

