

## Weekly SLA Customer Report

Customer      BCH Production  
 Database ID    28



=====  
 HARDDISK USAGE    BCH\_PRD\_ABSAPP1  
 =====

	Total disk space on C (GB)	Free disk space on C (GB)	Total disk space on D (GB)	Free disk space on D (GB)
14-9-2014	45	9	30	30

=====  
 HARDDISK USAGE    BCH\_PRD\_ABSAPP2  
 =====

	Total disk space on C (GB)	Free disk space on C (GB)	Total disk space on D (GB)	Free disk space on D (GB)
14-9-2014	45	9	30	30

=====  
 HARDDISK USAGE    BCH\_PRD\_ABSAPP3  
 =====

	Total disk space on C (GB)	Free disk space on C (GB)	Total disk space on D (GB)	Free disk space on D (GB)
14-9-2014	45	12	30	30

## Weekly SLA Customer Report

Customer      BCH Production  
 Database ID    28



=====

HARDDISK USAGE    BCH\_PRD\_ABSWEB1

=====

	Used disk space on C (GB)	Total disk space on C (GB)	Free disk space on C (GB)
20-9-2014	31	0	0
19-9-2014	31	0	0
18-9-2014	31	0	0
17-9-2014	31	0	0
16-9-2014	31	0	0
15-9-2014	31	0	0
14-9-2014	31	45	14

=====

HARDDISK USAGE    BCH\_PRD\_ABSWEB2

=====

	Used disk space on C (GB)	Total disk space on C (GB)	Free disk space on C (GB)
20-9-2014	30	0	0
19-9-2014	30	0	0
18-9-2014	30	0	0
17-9-2014	30	0	0
16-9-2014	30	0	0
15-9-2014	30	0	0
14-9-2014	30	45	15

## Weekly SLA Customer Report

Customer      BCH Production  
 Database ID    28



=====  
 HARDDISK USAGE    BCH\_PRD\_ORCDB1  
 =====

	Total disk space on C (GB)	Free disk space on C (GB)	Total disk space on D (GB)	Free disk space on D (GB)
14-9-2014	278	164	278	64

=====  
 HARDDISK USAGE    BCH\_PRD\_ORCDB2  
 =====

	Total disk space on C (GB)	Free disk space on C (GB)	Total disk space on D (GB)	Free disk space on D (GB)
14-9-2014	278	194	278	61

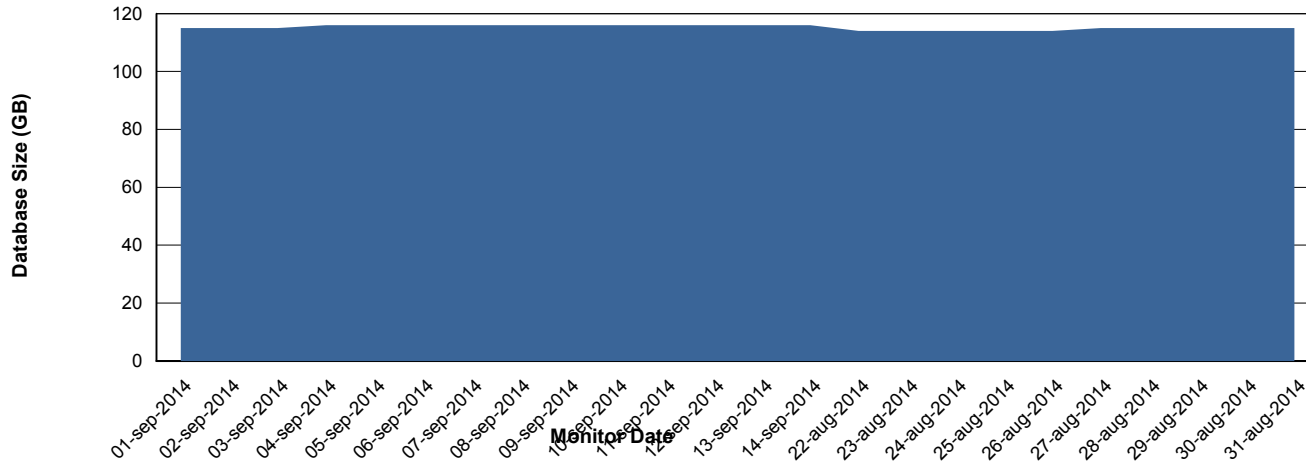
# Weekly SLA Customer Report

Customer BCH Production  
 Database ID 28



=====  
 DATABASE SIZE BCHDB\_Production  
 =====

## Database growth over last month



=====  
 DATABASE TABLESPACES BCHDB\_Production  
 =====

### TOTAL DATABASE SIZE PER TABLESPACE

Date	Tablespace Name	Filesize (Gb)	Usedsize (Gb)	Percentage free
14-9-2014	ABSDATA	26	0	100
	INDX	110	97	12

# Weekly SLA Customer Report

Customer BCH Production  
Database ID 28



=====  
STANDBY DATABASE HEALTH BCH Production  
=====

### Recovery lag for last 7 days



# Weekly SLA Customer Report

Customer BCH Production  
Database ID 28

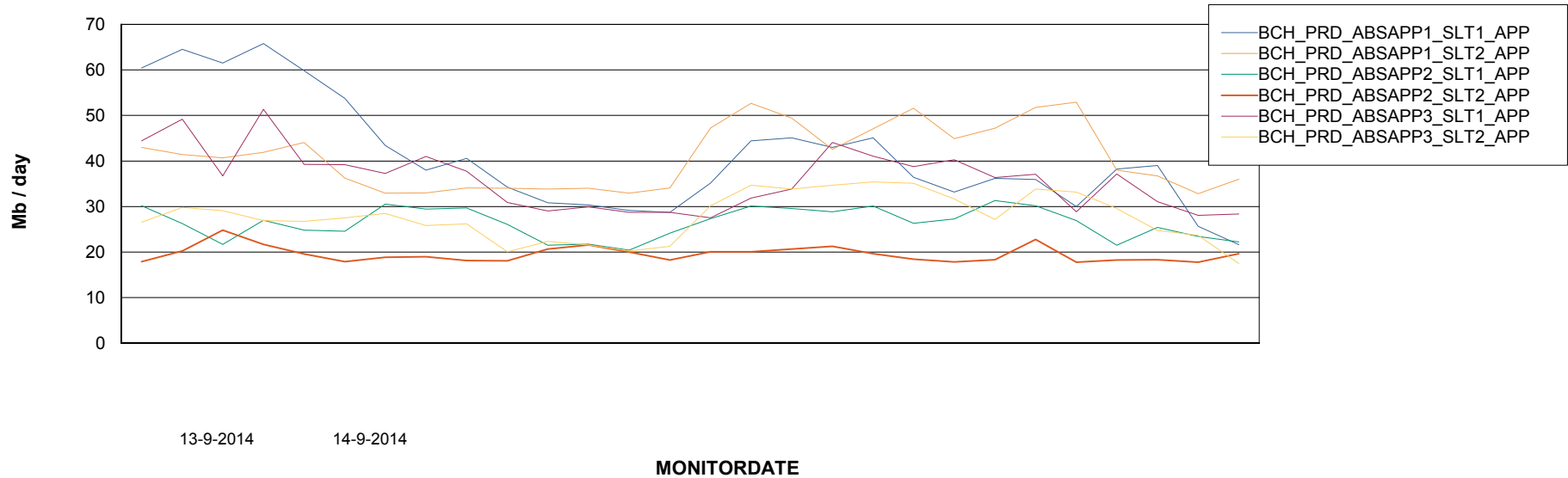


## ABSSolute Application Server Services

### Disaster per ABS Server



### Avg memory used per ABS Server Service





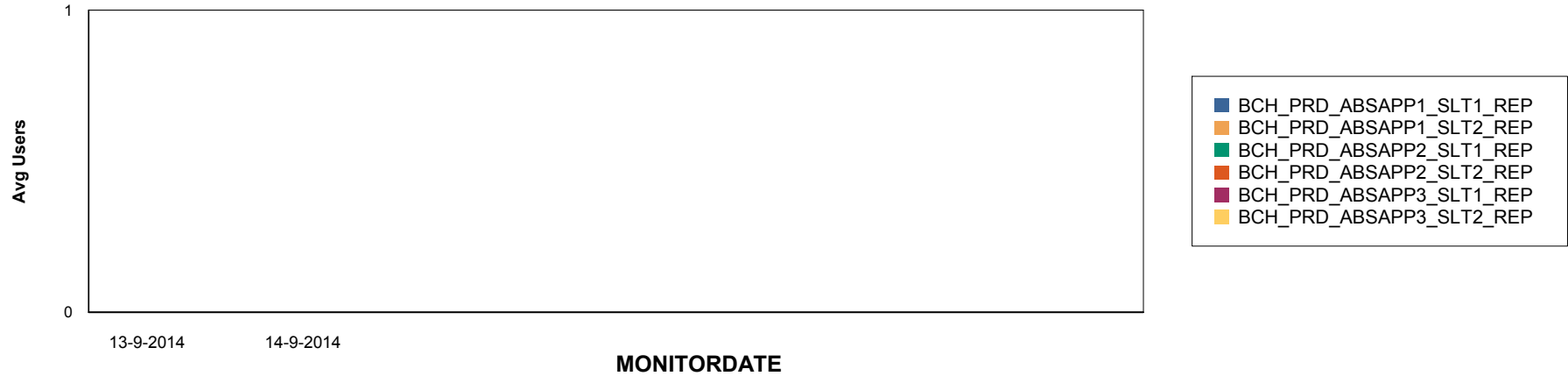
# Weekly SLA Customer Report

Customer BCH Production  
Database ID 28

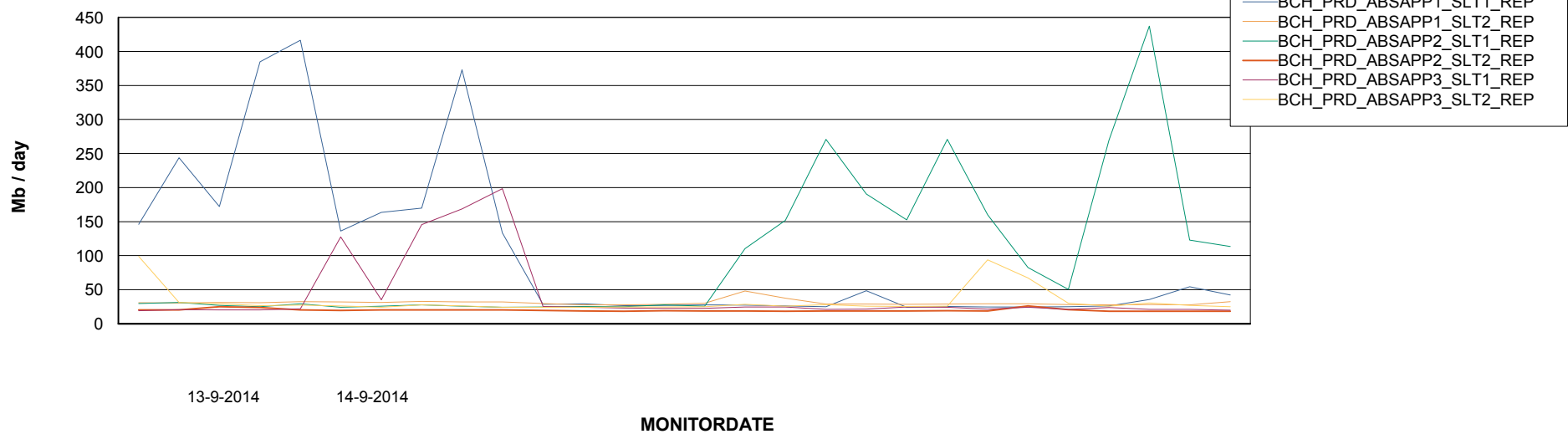


## ABSSolute Application ReportServer Services

### Disaster per ReportServer



### Avg memory used per ReportServer Service

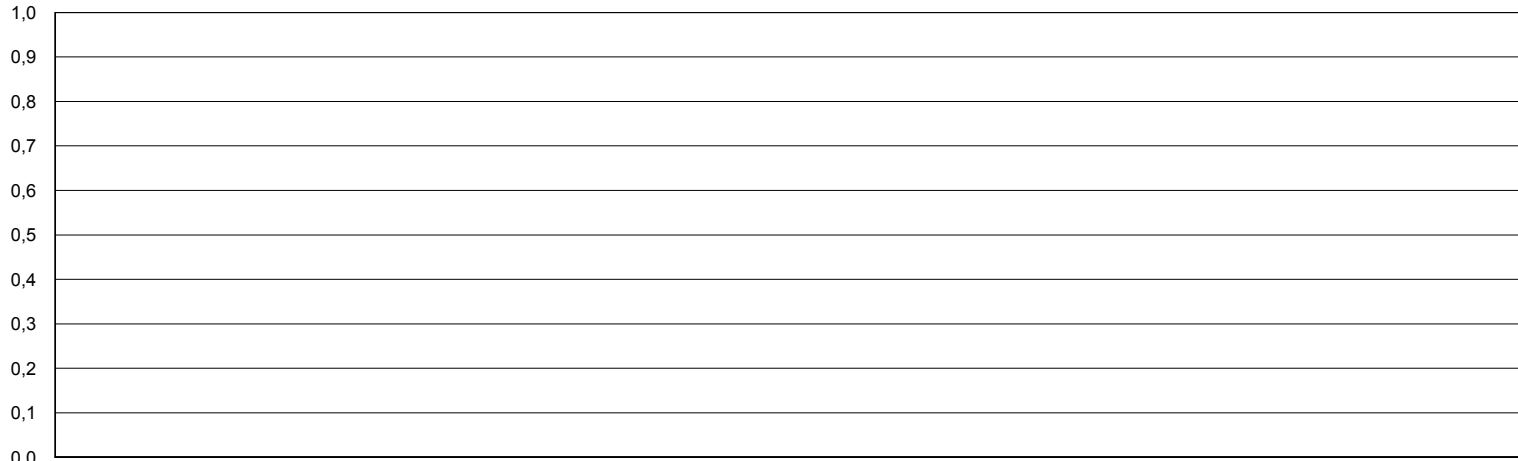


# Weekly SLA Customer Report

Customer BCH Production  
Database ID 28



## Disaster per ABS component



- BCH\_PRD\_ABSAPP1\_SLT1\_APP
- BCH\_PRD\_ABSAPP1\_SLT1\_REP
- BCH\_PRD\_ABSAPP1\_SLT2\_APP
- BCH\_PRD\_ABSAPP1\_SLT2\_REP
- BCH\_PRD\_ABSAPP2\_SLT1\_APP
- BCH\_PRD\_ABSAPP2\_SLT1\_REP
- BCH\_PRD\_ABSAPP2\_SLT2\_APP
- BCH\_PRD\_ABSAPP2\_SLT2\_REP
- BCH\_PRD\_ABSAPP3\_SLT1\_APP
- BCH\_PRD\_ABSAPP3\_SLT1\_REP
- BCH\_PRD\_ABSAPP3\_SLT2\_APP
- BCH\_PRD\_ABSAPP3\_SLT2\_REP

14-9-2014