

# Weekly SLA Customer Report

Customer AUJ\_Production  
 Database ID 41



=====  
 HARDDISK USAGE AUJDB\_BI  
 =====

	Used disk space on / (GB)	Total disk space on / (GB)
20-9-2014	5	6
19-9-2014	5	6
18-9-2014	5	6
17-9-2014	5	6
16-9-2014	5	6
15-9-2014	5	6
14-9-2014	5	6

=====  
 HARDDISK USAGE AUJ\_PRD\_ORACLE1  
 =====

	Used disk space on \$1 (GB)	Total disk space on \$1 (GB)	Free disk space on \$1 (GB)
20-9-2014	114	290	67
19-9-2014	115	290	67
18-9-2014	115	290	67
17-9-2014	115	290	67
16-9-2014	115	290	67
15-9-2014	114	290	67
14-9-2014	114	290	67

## Weekly SLA Customer Report

Customer     AUJ\_Production  
 Database ID     41



=====  
 HARDDISK USAGE     AUJ\_PRD\_ORACLE2  
 =====

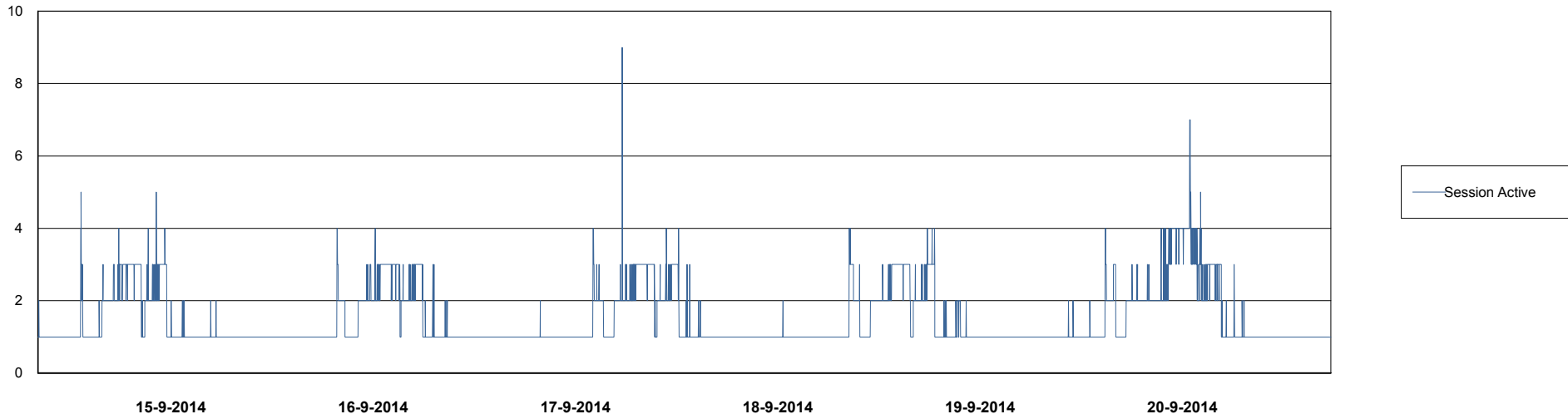
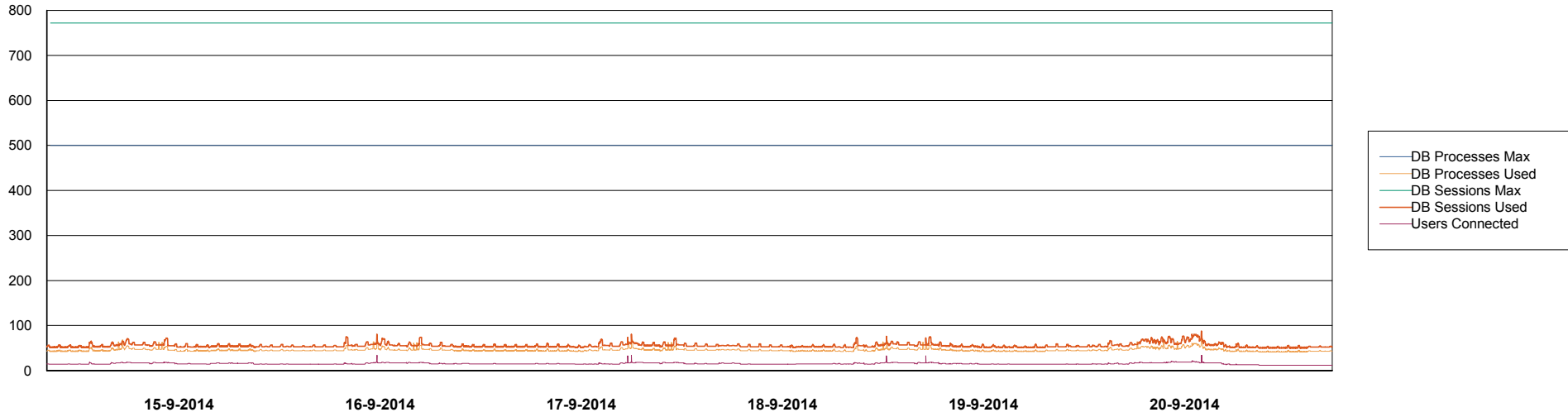
	Used disk space on \$1 (GB)	Total disk space on \$1 (GB)	Free disk space on \$1 (GB)
20-9-2014	6	109	98
19-9-2014	6	109	98
18-9-2014	6	109	98
17-9-2014	6	109	98
16-9-2014	6	109	98
15-9-2014	6	109	98
14-9-2014	6	109	98

# Weekly SLA Customer Report

Customer AUJ\_Production  
Database ID 41



DATABASE PERFORMANCE AUJDB\_BI

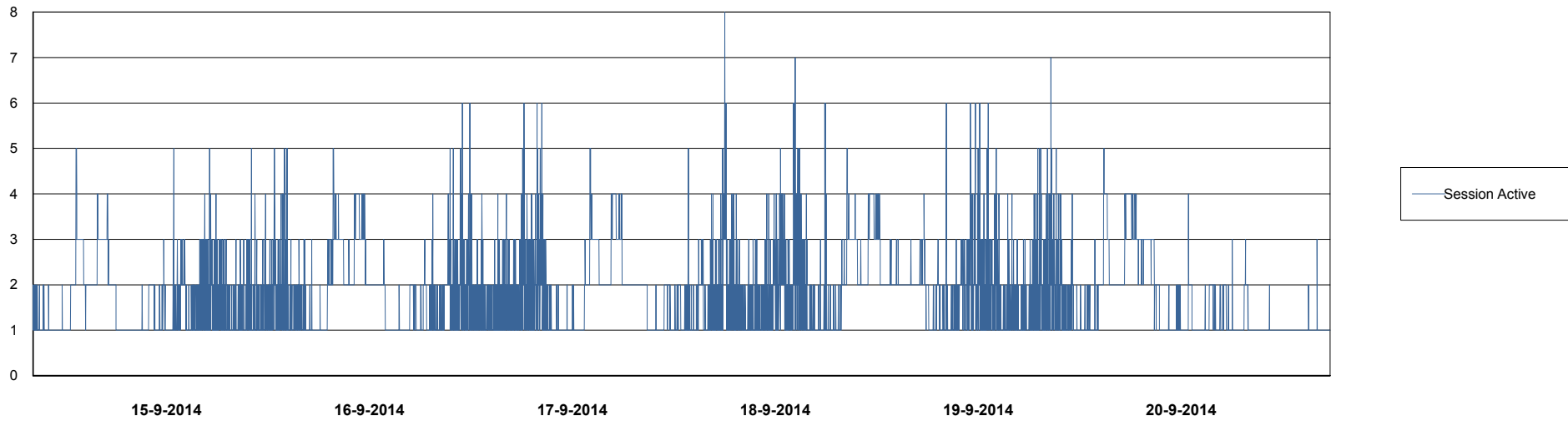
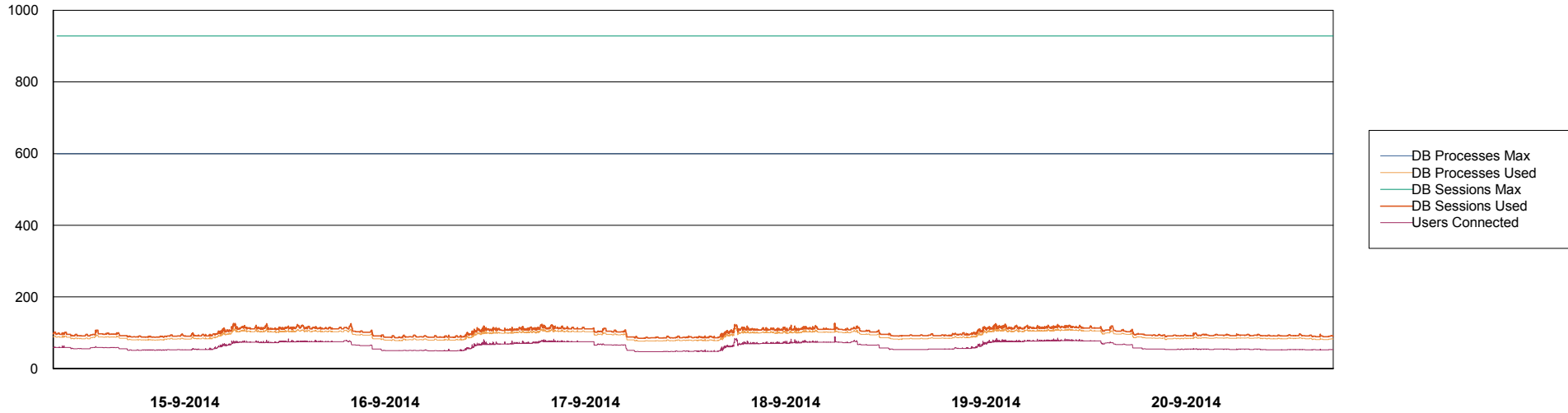


# Weekly SLA Customer Report

Customer AUJ\_Production  
Database ID 41



DATABASE PERFORMANCE AUJDB\_Production

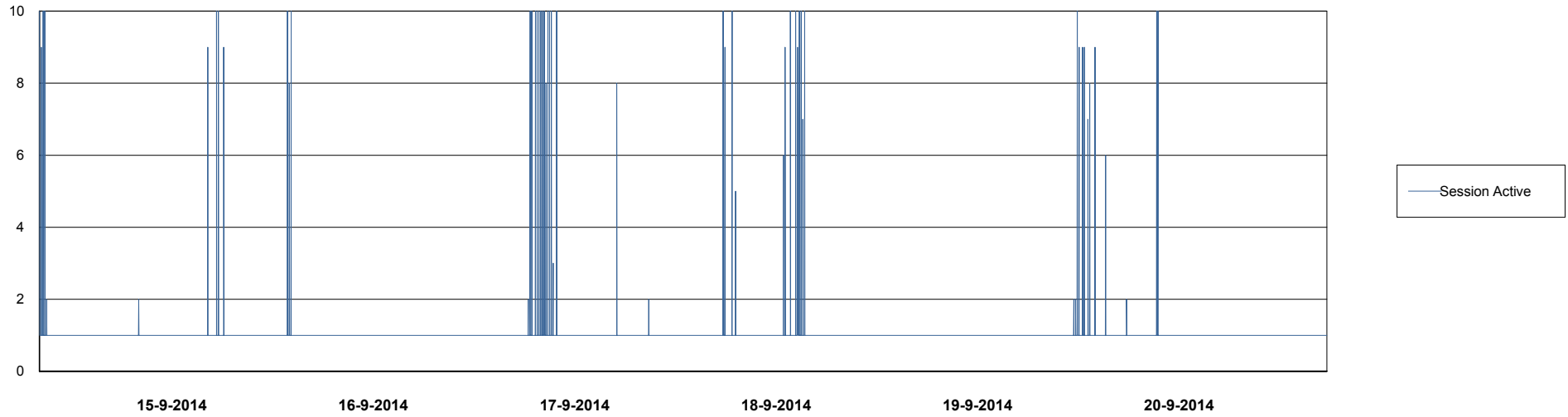
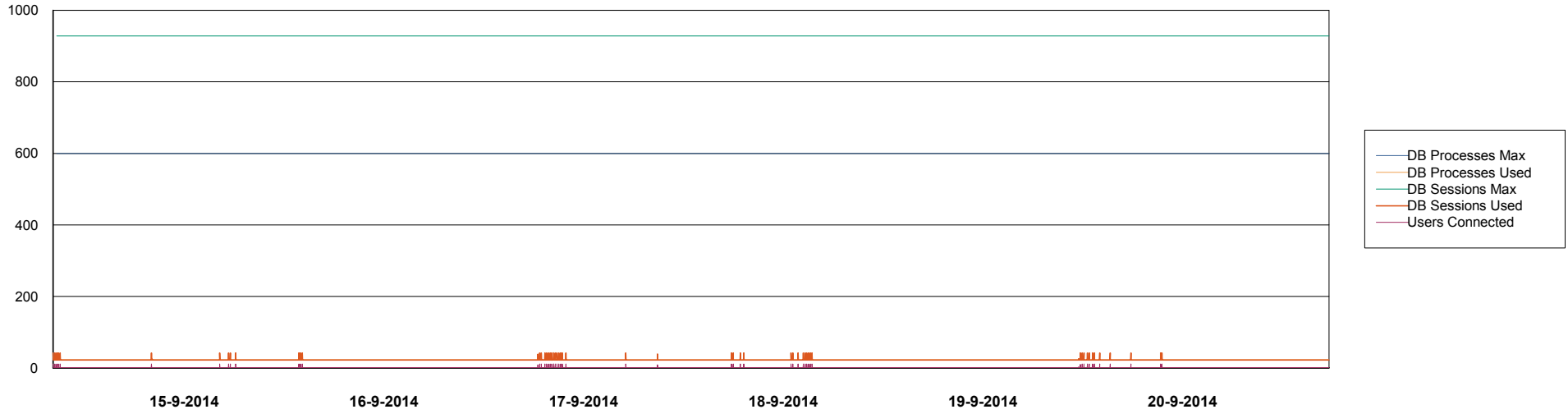


# Weekly SLA Customer Report

Customer AUJ\_Production  
Database ID 41



## DATABASE PERFORMANCE AUJDB\_Standby

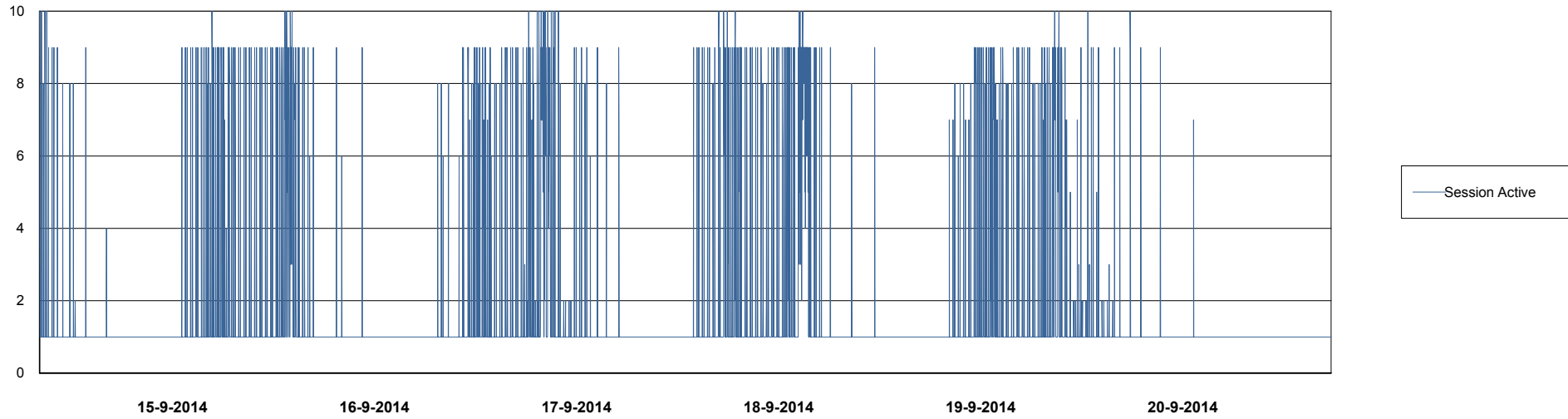
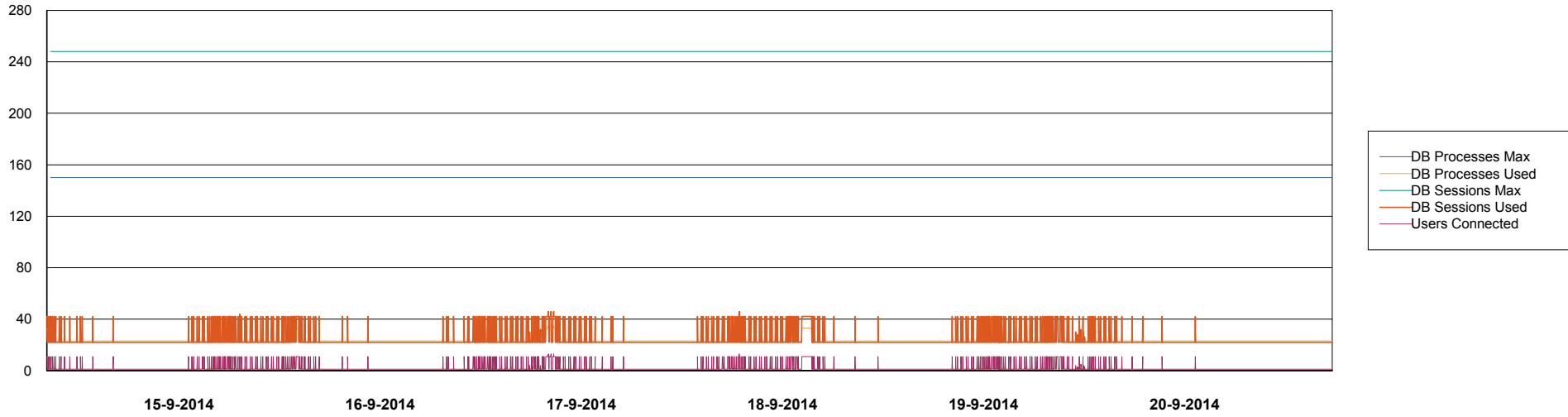


# Weekly SLA Customer Report

Customer AUJ\_Production  
Database ID 41



## DATABASE PERFORMANCE AUJDB3\_Standby



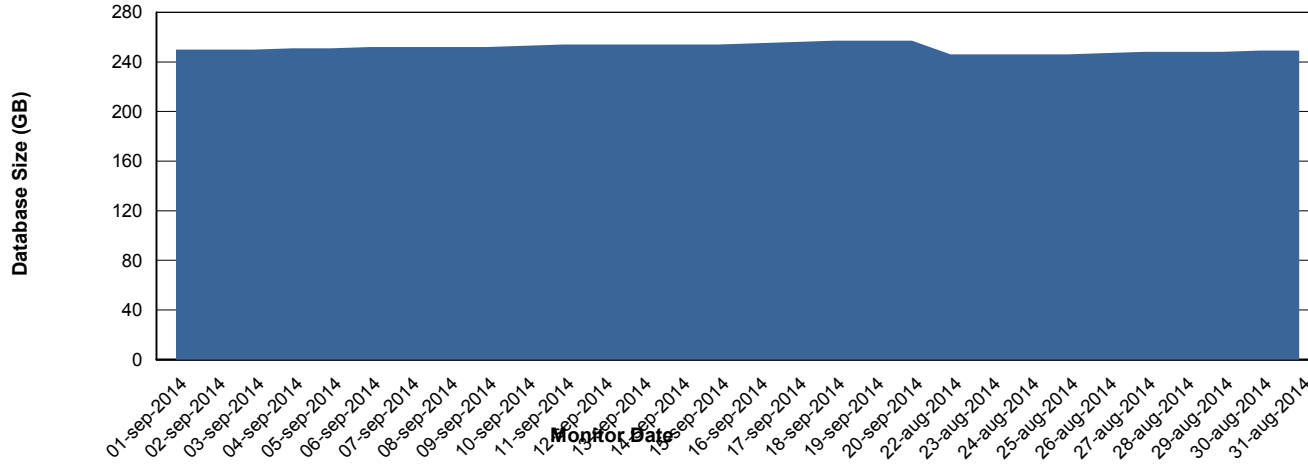
# Weekly SLA Customer Report

Customer AUJ\_Production  
Database ID 41



=====  
DATABASE SIZE AUJDB\_Production  
=====

## Database growth over last month



# Weekly SLA Customer Report

Customer AUJ\_Production  
 Database ID 41



=====  
 DATABASE TABLESPACES AUJDB\_BI  
 =====

TOTAL DATABASE SIZE PER TABLESPACE

Date	Tablespace Name	Filesize (Gb)	Usedsize (Gb)	Percentage free
20-9-2014	ABSDATA	99	82	17
	INDX	164	137	16
19-9-2014	ABSDATA	99	82	17
	INDX	164	137	16
18-9-2014	ABSDATA	99	82	17
	INDX	164	137	16
17-9-2014	ABSDATA	99	82	17
	INDX	164	137	16
16-9-2014	ABSDATA	99	82	17
	INDX	164	137	16
15-9-2014	ABSDATA	99	82	17
	INDX	164	137	16
14-9-2014	ABSDATA	99	82	17
	INDX	164	137	16

# Weekly SLA Customer Report

Customer AUJ\_Production  
 Database ID 41



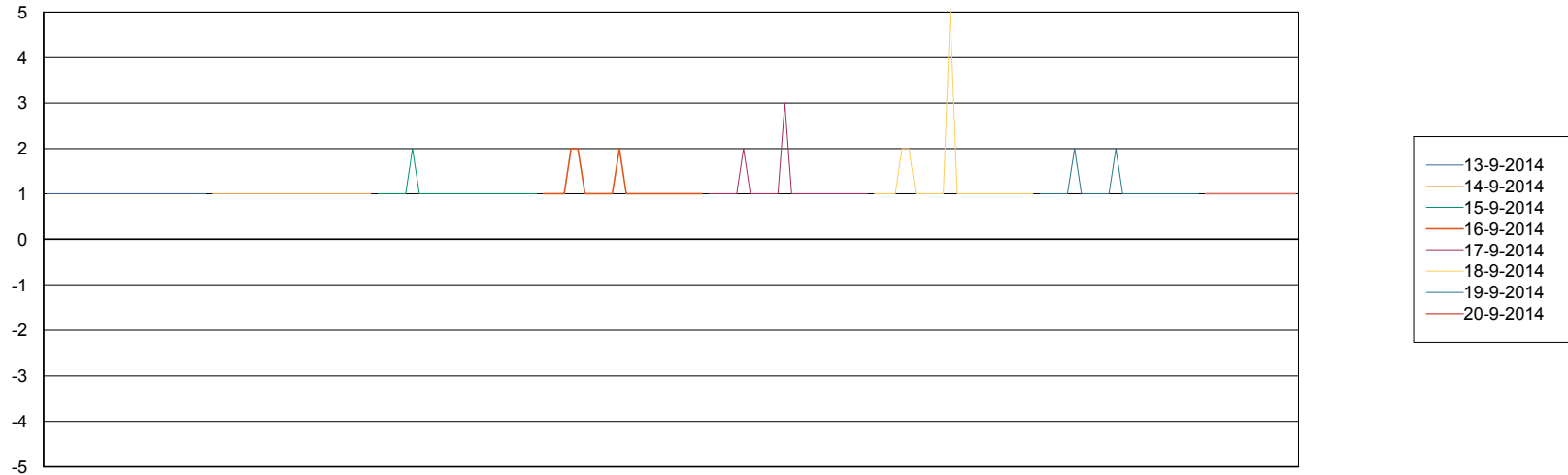
=====  
 DATABASE TABLESPACES AUJDB\_Production  
 =====

TOTAL DATABASE SIZE PER TABLESPACE

Date	Tablespace Name	Filesize (Gb)	Usedsize (Gb)	Percentage free
20-9-2014	ABSDATA	139	112	19
	INDX	177	144	19
19-9-2014	ABSDATA	139	112	19
	INDX	177	144	19
18-9-2014	ABSDATA	139	112	19
	INDX	177	143	19
17-9-2014	ABSDATA	139	111	20
	INDX	177	143	19
16-9-2014	ABSDATA	139	111	20
	INDX	177	142	20
15-9-2014	ABSDATA	139	111	20
	INDX	177	142	20
14-9-2014	ABSDATA	139	111	20
	INDX	177	142	20

=====  
 STANDBY DATABASE HEALTH AUJ\_Production  
 =====

Recovery lag for last 7 days



# Weekly SLA Customer Report

---

Customer AUJ\_Production  
Database ID 41

