

Weekly SLA Customer Report

Customer RFL_Production
 Database ID 36



=====
 HARDDISK USAGE RFL_PRD_ORACLE1
 =====

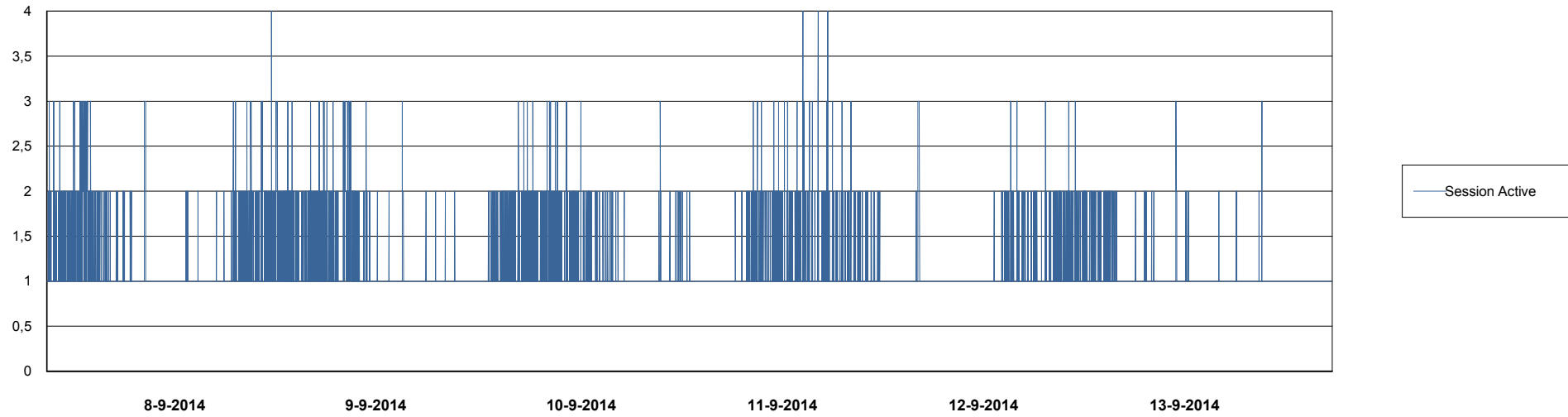
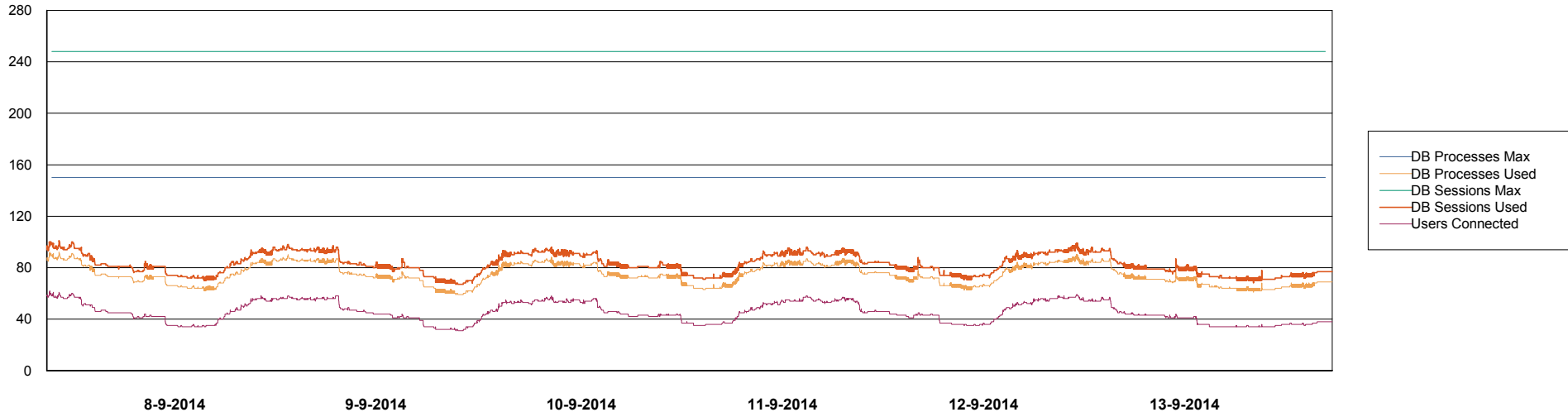
	Total disk space on C (GB)	Free disk space on C (GB)	Total disk space on D (GB)	Free disk space on D (GB)	Total disk space on E (GB)	Free disk space on E (GB)
13-9-2014	279	81	137	100	137	85
12-9-2014	279	81	137	100	137	86
11-9-2014	279	81	137	100	137	86
10-9-2014	279	81	137	100	137	87
9-9-2014	279	81	137	100	137	88
8-9-2014	279	82	137	100	137	88
7-9-2014	279	83	137	101	137	89

Weekly SLA Customer Report

Customer RFL_Production
Database ID 36



DATABASE PERFORMANCE RFLDB_Production

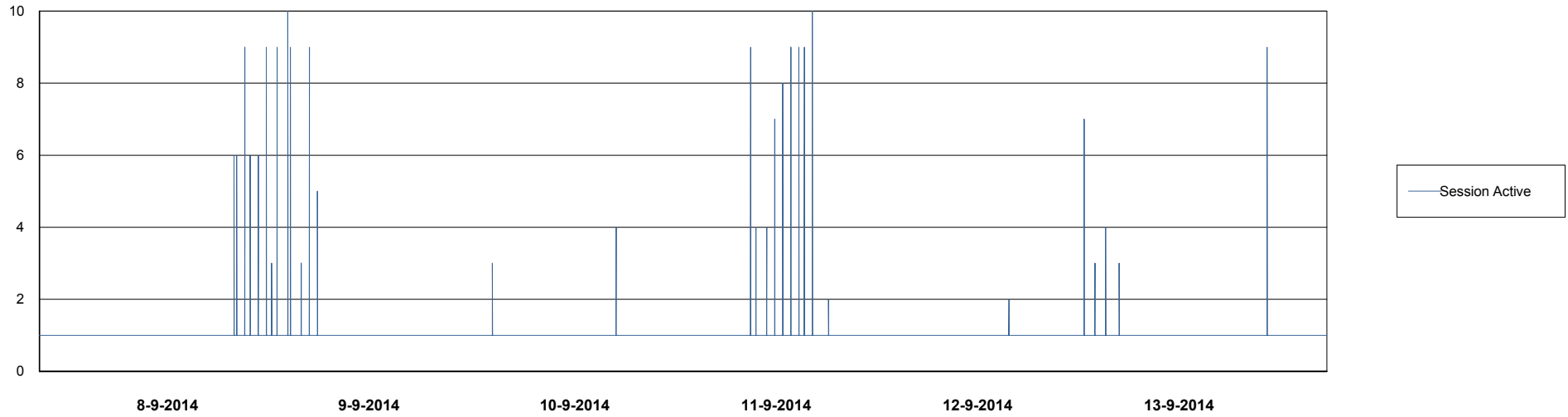
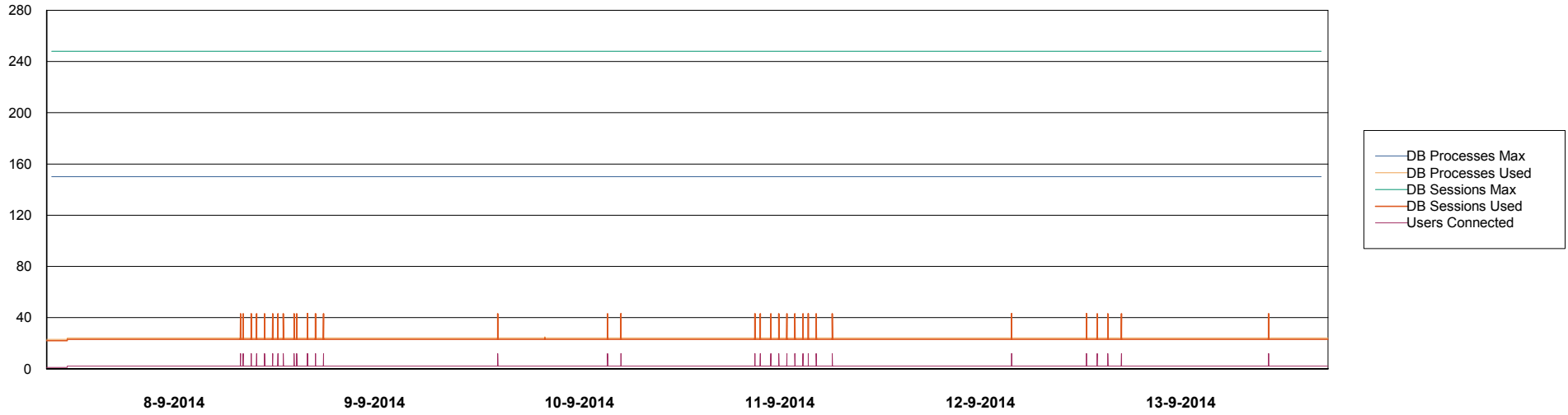


Weekly SLA Customer Report

Customer RFL_Production
Database ID 36



DATABASE PERFORMANCE RFLDB_Standby



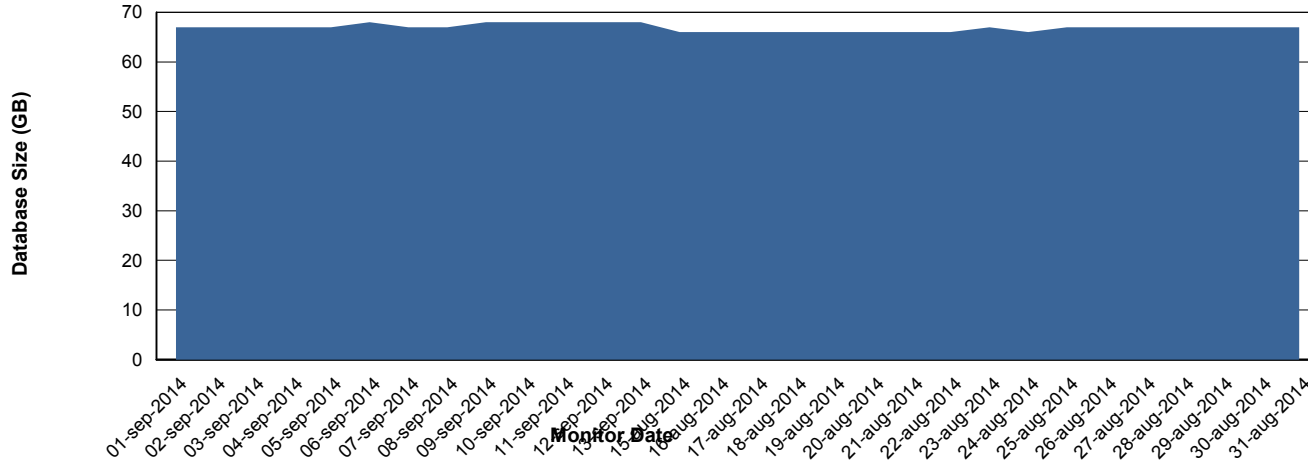
Weekly SLA Customer Report

Customer RFL_Production
 Database ID 36



=====
 DATABASE SIZE RFLDB_Production
 =====

Database growth over last month



=====
 DATABASE TABLESPACES RFLDB_Production
 =====

TOTAL DATABASE SIZE PER TABLESPACE

Date	Tablespace Name	Filesize (Gb)	Usedsize (Gb)	Percentage free
13-9-2014	ABSDATA	21	17	19
	INDX	60	50	17
12-9-2014	ABSDATA	21	17	19
	INDX	60	50	17
11-9-2014	ABSDATA	21	17	19
	INDX	60	50	17
10-9-2014	ABSDATA	21	17	19
	INDX	60	50	17
9-9-2014	ABSDATA	21	17	19
	INDX	60	50	17
8-9-2014	ABSDATA	21	17	19
	INDX	60	50	17
7-9-2014	ABSDATA	20	17	15
	INDX	58	50	14

