

Weekly SLA Customer Report

Customer NIX_Production
Database ID 51



=====
HARDDISK USAGE NIX_PRD_ABSAPP1
=====

	Total disk space on C (GB)	Free disk space on C (GB)
13-9-2014	136	86
12-9-2014	136	86
11-9-2014	136	86
10-9-2014	136	86
9-9-2014	136	86
8-9-2014	136	86
7-9-2014	136	86

=====
HARDDISK USAGE NIX_PRD_ABSWEB1
=====

	Total disk space on C (GB)	Free disk space on C (GB)
13-9-2014	930	736
12-9-2014	930	736
11-9-2014	930	736
10-9-2014	930	736
9-9-2014	930	737
8-9-2014	930	737
7-9-2014	930	737

Weekly SLA Customer Report

Customer NIX_Production
 Database ID 51



=====
 HARDDISK USAGE NIX_PRD_ORACLE_B11
 =====

	Total disk space on C (GB)	Free disk space on C (GB)	Total disk space on D (GB)	Free disk space on D (GB)	Total disk space on E (GB)	Free disk space on E (GB)
13-9-2014	40	7	279	180	236	169
12-9-2014	40	7	279	172	236	169
11-9-2014	40	7	279	172	236	161
10-9-2014	40	7	279	177	236	163
9-9-2014	40	7	279	180	236	170
8-9-2014	40	7	279	180	236	169
7-9-2014	40	7	279	180	236	170

=====
 HARDDISK USAGE NIX_PRD_ORCDB1
 =====

	Total disk space on C (GB)	Free disk space on C (GB)	Total disk space on D (GB)	Free disk space on D (GB)	Total disk space on E (GB)	Free disk space on E (GB)
13-9-2014	136	21	136	35	136	100
12-9-2014	136	21	136	35	136	101
11-9-2014	136	21	136	35	136	101
10-9-2014	136	21	136	35	136	101
9-9-2014	136	21	136	35	136	101
8-9-2014	136	21	136	35	136	101
7-9-2014	136	21	136	35	136	101

Weekly SLA Customer Report

Customer NIX_Production
 Database ID 51



=====
 HARDDISK USAGE NIX_PRD_ORCDB2
 =====

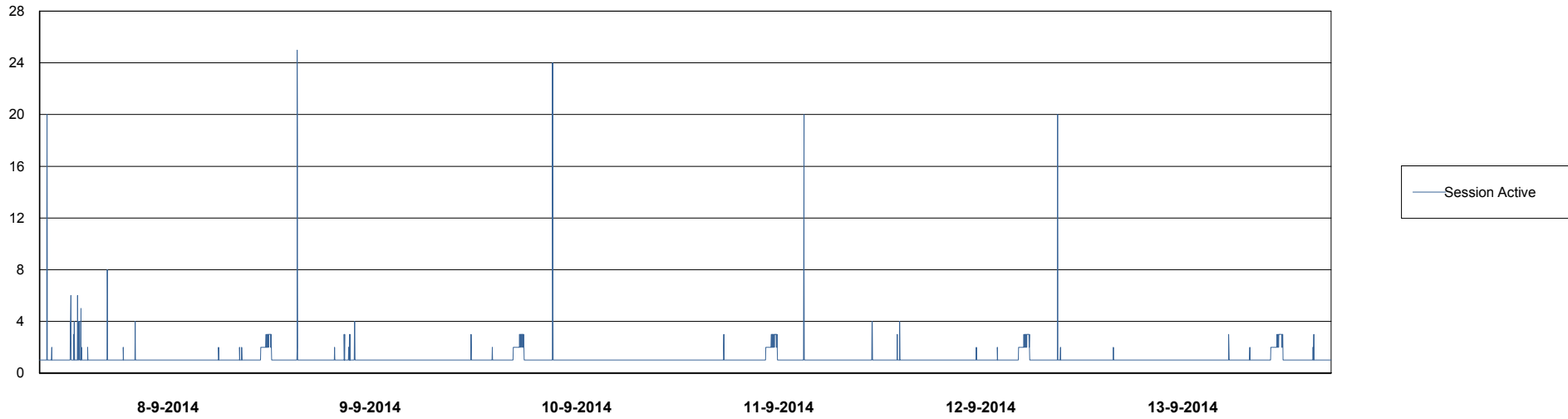
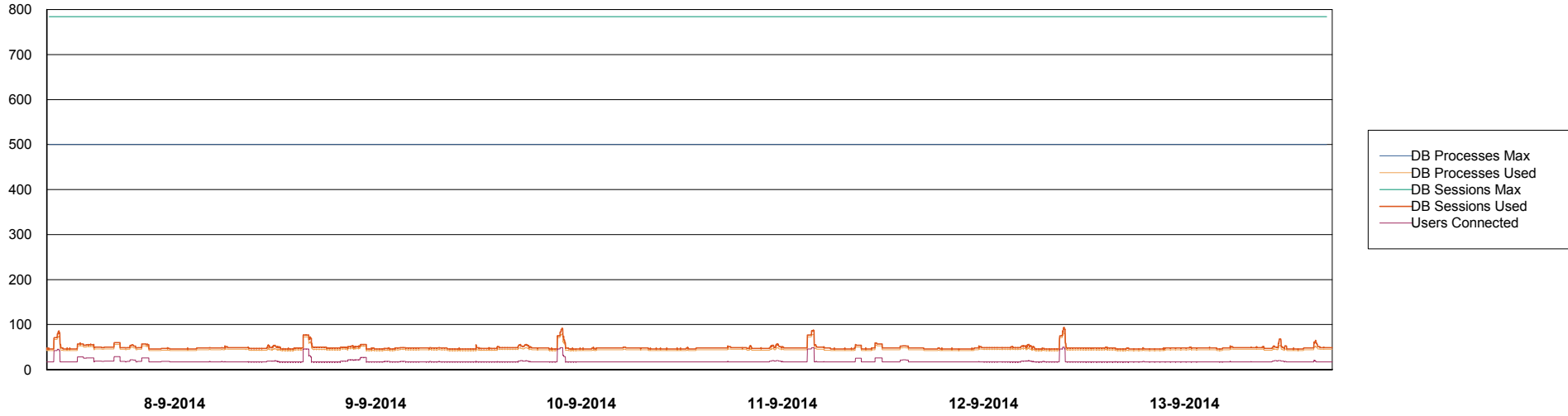
	Total disk space on C (GB)	Free disk space on C (GB)	Total disk space on D (GB)	Free disk space on D (GB)	Total disk space on E (GB)	Free disk space on E (GB)
13-9-2014	279	49	279	49	279	157
12-9-2014	279	49	279	49	279	179
11-9-2014	279	49	279	49	279	178
10-9-2014	279	49	279	49	279	179
9-9-2014	279	49	279	49	279	179
8-9-2014	279	49	279	49	279	125
7-9-2014	279	49	279	49	279	111

Weekly SLA Customer Report

Customer NIX_Production
Database ID 51



DATABASE PERFORMANCE NIXDB_BI

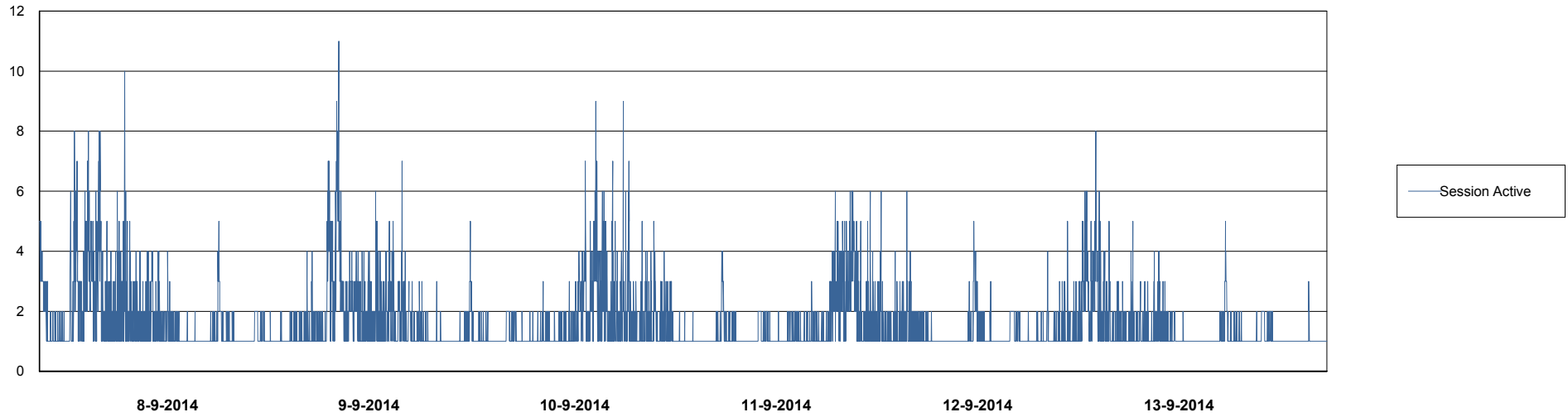
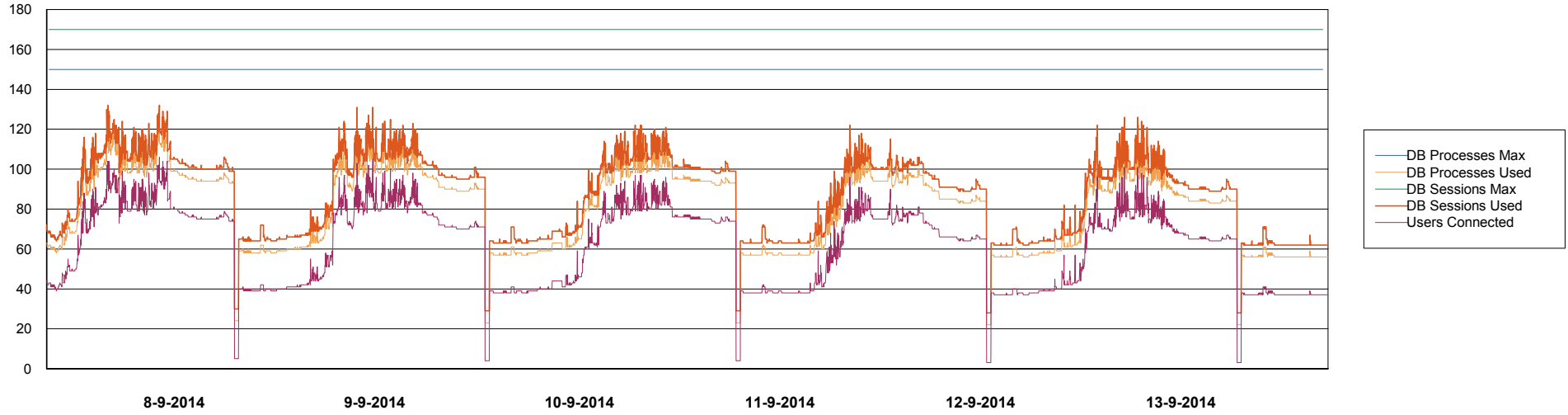


Weekly SLA Customer Report

Customer NIX_Production
Database ID 51



DATABASE PERFORMANCE NIXDB_Production

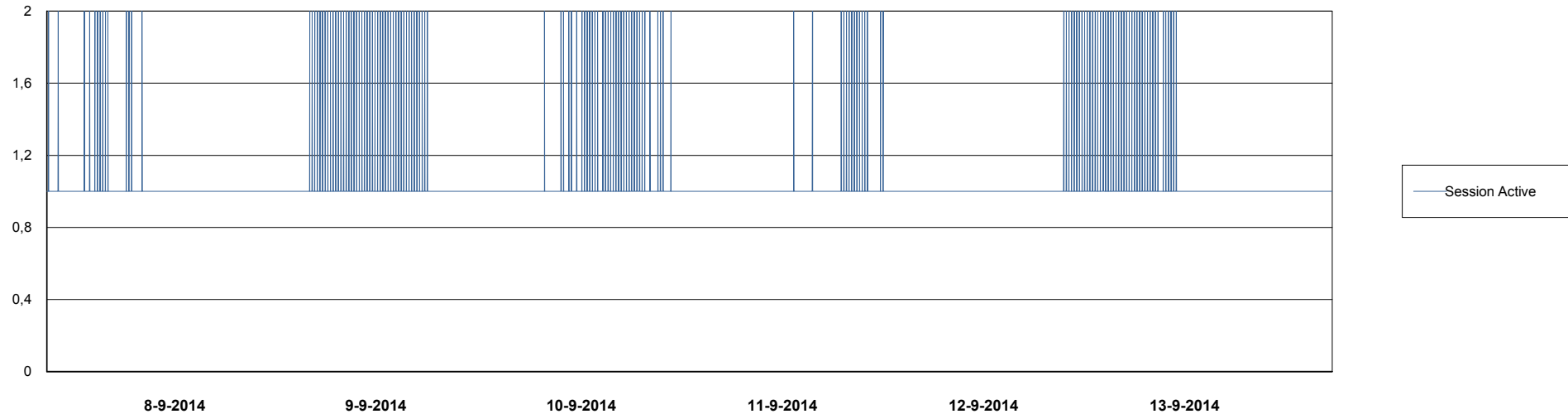
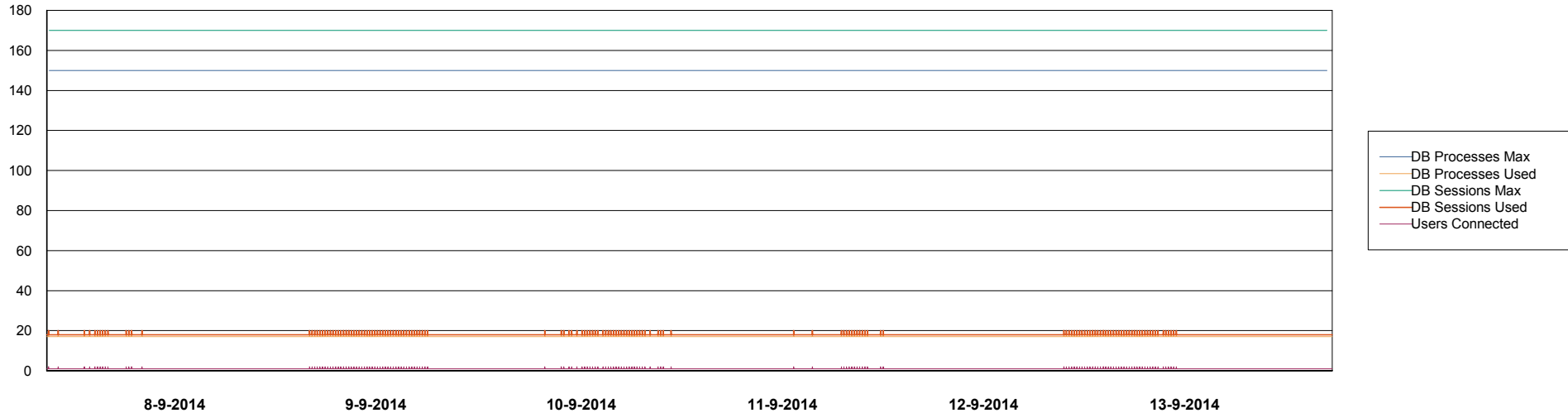


Weekly SLA Customer Report

Customer NIX_Production
Database ID 51



DATABASE PERFORMANCE NIXDB_Standby



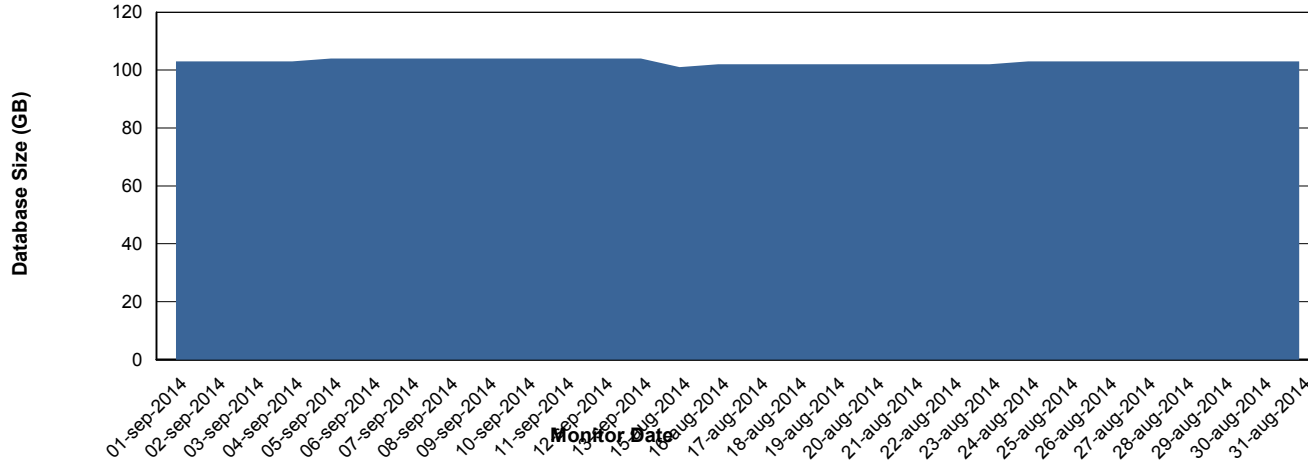
Weekly SLA Customer Report

Customer NIX_Production
Database ID 51



=====
DATABASE SIZE NIXDB_Production
=====
=====

Database growth over last month



Weekly SLA Customer Report

Customer NIX_Production
 Database ID 51



=====
 DATABASE TABLESPACES NIXDB_BI
 =====

TOTAL DATABASE SIZE PER TABLESPACE

Date	Tablespace Name	Filesize (Gb)	Usedsize (Gb)	Percentage free
13-9-2014	ABSDATA	20	17	15
	INDX	40	26	35
12-9-2014	ABSDATA	20	17	15
	INDX	40	26	35
11-9-2014	ABSDATA	20	17	15
	INDX	40	26	35
10-9-2014	ABSDATA	20	17	15
	INDX	40	26	35
9-9-2014	ABSDATA	20	17	15
	INDX	40	26	35
8-9-2014	ABSDATA	20	17	15
	INDX	40	26	35
7-9-2014	ABSDATA	20	17	15
	INDX	40	26	35

Weekly SLA Customer Report

Customer NIX_Production
 Database ID 51



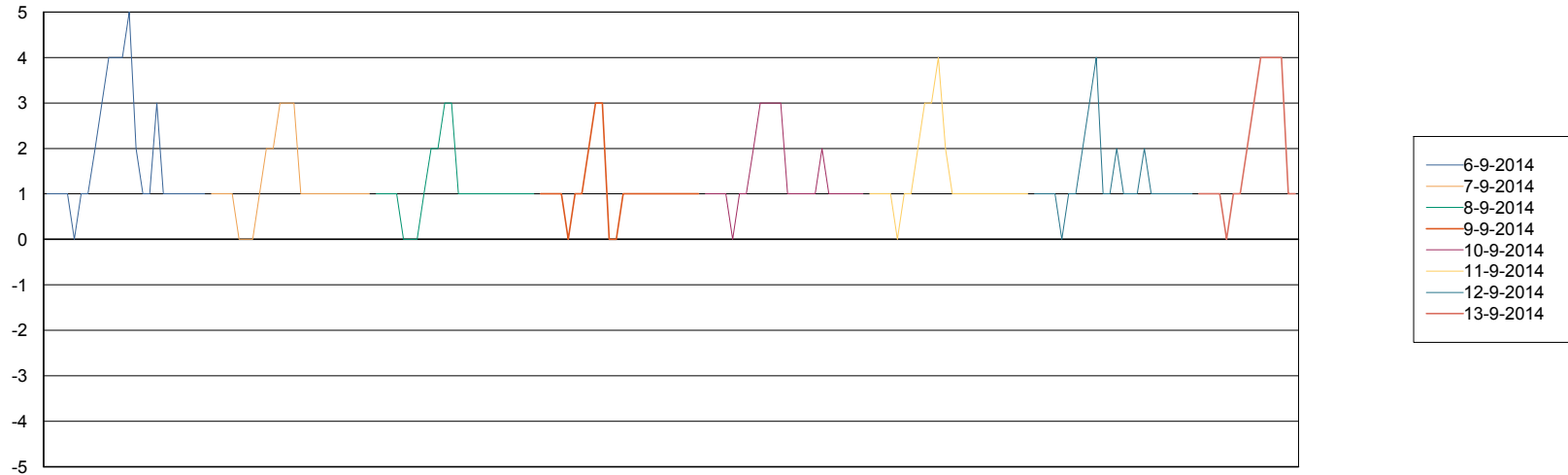
=====
 DATABASE TABLESPACES NIXDB_Production
 =====

TOTAL DATABASE SIZE PER TABLESPACE

Date	Tablespace Name	Filesize (Gb)	Usedsize (Gb)	Percentage free
13-9-2014	ABSDATA	40	27	33
	INDX	97	74	24
12-9-2014	ABSDATA	40	27	33
	INDX	97	74	24
11-9-2014	ABSDATA	40	27	33
	INDX	97	74	24
10-9-2014	ABSDATA	40	27	33
	INDX	97	74	24
9-9-2014	ABSDATA	40	27	33
	INDX	97	74	24
8-9-2014	ABSDATA	40	27	33
	INDX	97	74	24
7-9-2014	ABSDATA	40	27	33
	INDX	97	74	24

=====
 STANDBY DATABASE HEALTH NIX_Production
 =====

Recovery lag for last 7 days



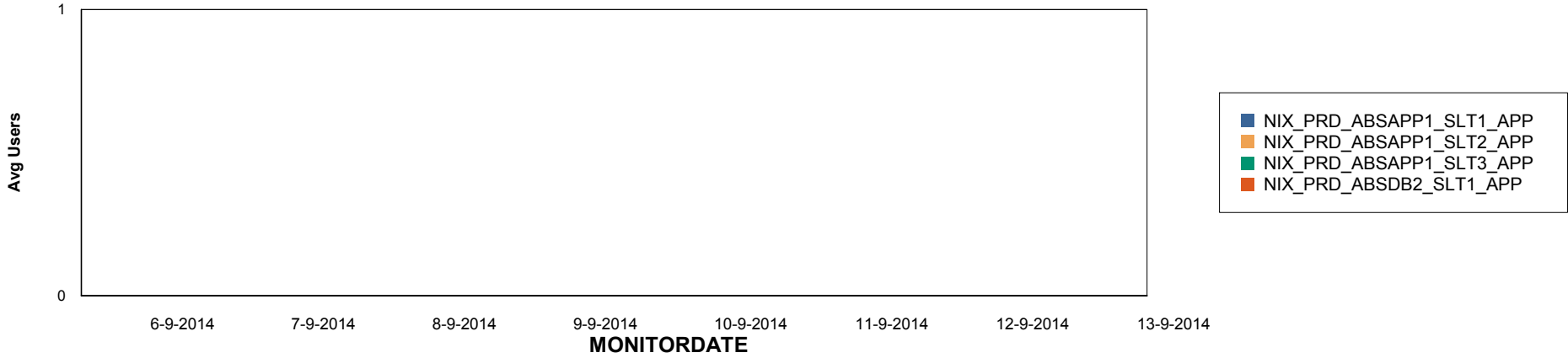
Weekly SLA Customer Report

Customer NIX_Production
Database ID 51

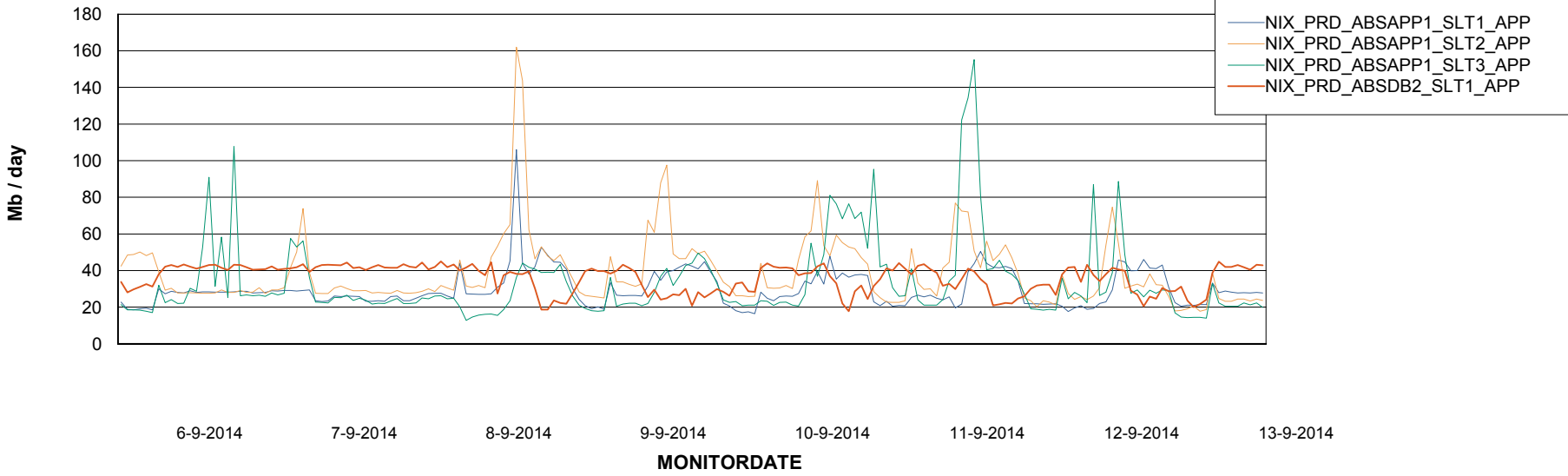


=====
ABSolute Application Server Services
=====

Disaster per ABS Server



Avg memory used per ABS Server Service



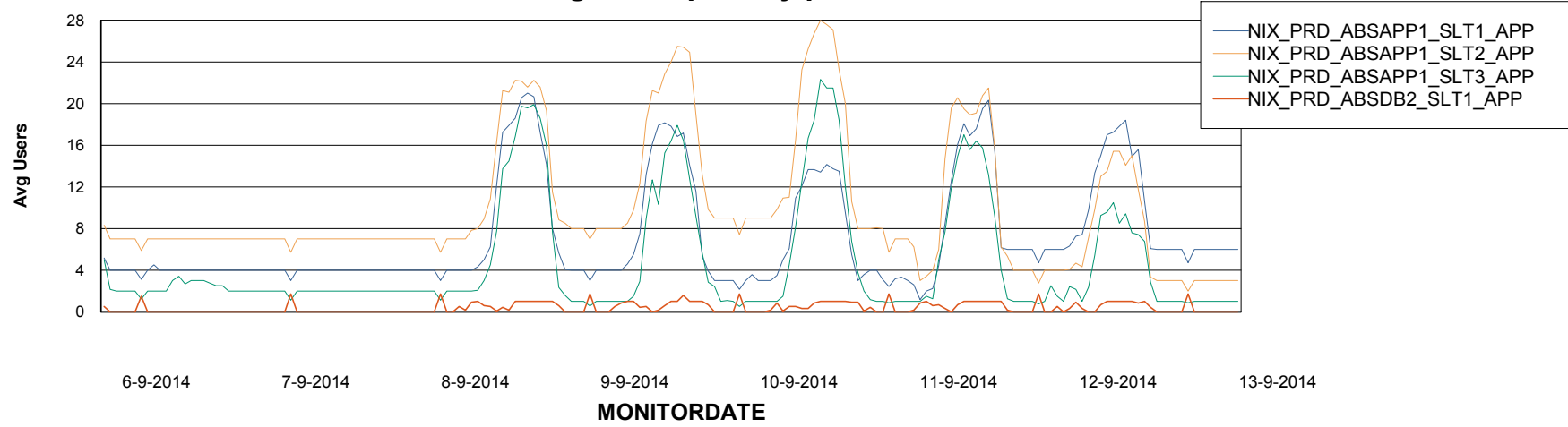
Weekly SLA Customer Report

Customer NIX_Production
Database ID 51



=====
ABSolute Application Server Services
=====

Avg users per day per ABS server



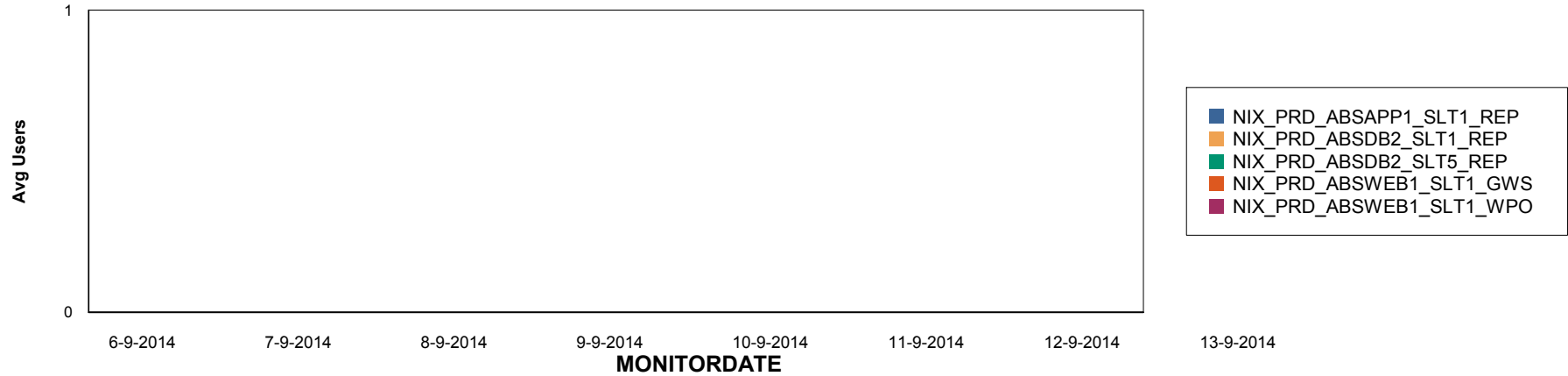
Weekly SLA Customer Report

Customer NIX_Production
Database ID 51

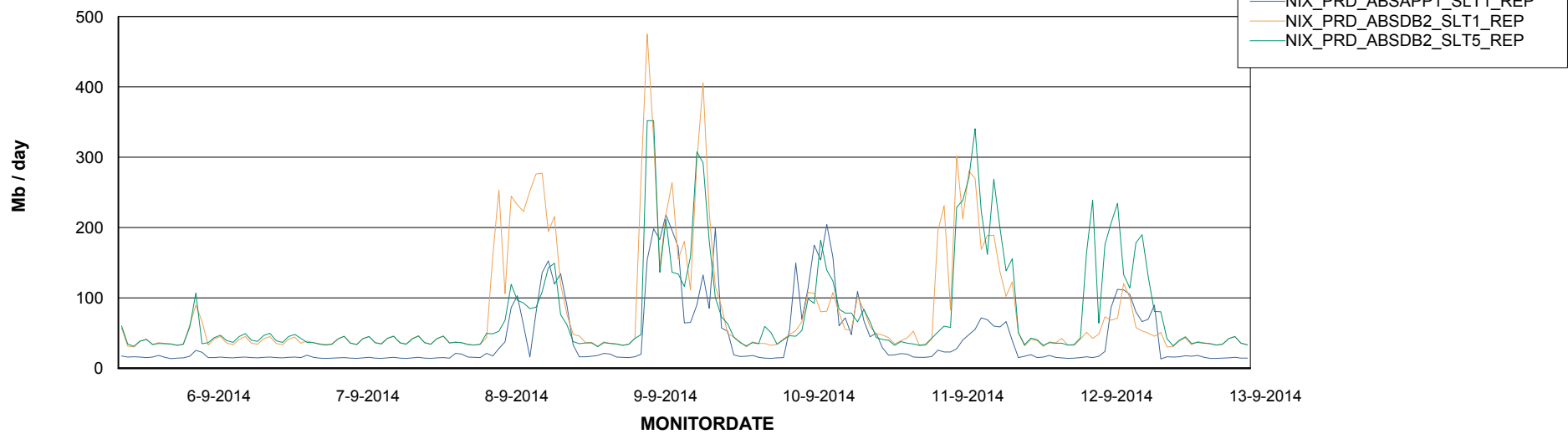


=====
ABSolute Application ReportServer Services
=====

Disaster per ReportServer



Avg memory used per ReportServer Service



Weekly SLA Customer Report

Customer NIX_Production
Database ID 51



Disaster per ABS component

