

# Weekly SLA Customer Report

Customer LLG\_Production  
 Database ID 53



=====  
 HARDDISK USAGE LLG\_PRD\_BI01  
 =====

	Total disk space on C (GB)	Free disk space on C (GB)
13-9-2014	559	399
12-9-2014	559	399
11-9-2014	559	399
10-9-2014	559	399
9-9-2014	559	399
8-9-2014	559	399
7-9-2014	559	399

=====  
 HARDDISK USAGE LLG\_PRD\_OR1  
 =====

	Total disk space on C (GB)	Free disk space on C (GB)	Total disk space on D (GB)	Free disk space on D (GB)
13-9-2014	279	178	600	99
12-9-2014	279	178	600	104
11-9-2014	279	178	600	110
10-9-2014	279	178	600	116
9-9-2014	279	178	600	122
8-9-2014	279	178	600	134
7-9-2014	279	178	600	148

## Weekly SLA Customer Report

Customer      LLG\_Production  
 Database ID    53



=====

HARDDISK USAGE    LLG\_PRD\_OR2

=====

	Total disk space on C (GB)	Free disk space on C (GB)	Total disk space on D (GB)	Free disk space on D (GB)
13-9-2014	293	250	545	239
12-9-2014	293	250	545	240
11-9-2014	293	250	545	241
10-9-2014	293	250	545	242
9-9-2014	293	250	545	243
8-9-2014	293	250	545	250
7-9-2014	293	250	545	260

=====

HARDDISK USAGE    LLG\_PRD\_vABS01

=====

	Total disk space on C (GB)	Free disk space on C (GB)	Total disk space on D (GB)	Free disk space on D (GB)
13-9-2014	150	41	150	146
12-9-2014	150	55	150	146
11-9-2014	150	67	150	146
10-9-2014	150	67	150	146
9-9-2014	150	67	150	146
8-9-2014	150	67	150	146
7-9-2014	150	67	150	146

## Weekly SLA Customer Report

Customer      LLG\_Production  
 Database ID    53



=====  
 HARDDISK USAGE    LLG\_PRD\_vABS02  
 =====

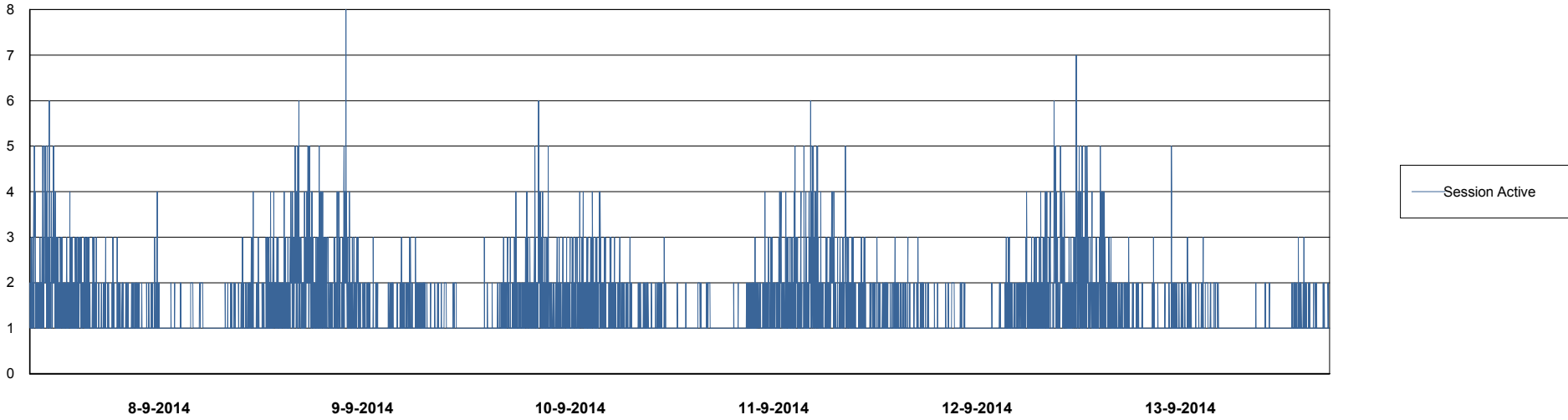
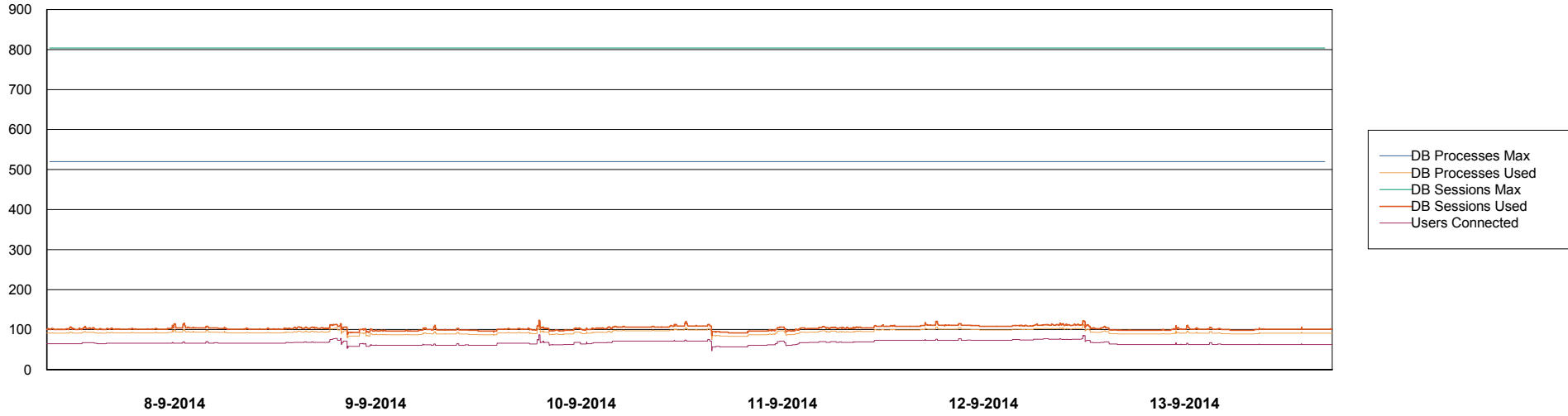
	Total disk space on C (GB)	Free disk space on C (GB)	Total disk space on D (GB)	Free disk space on D (GB)
13-9-2014	150	29	150	143
12-9-2014	150	33	150	143
11-9-2014	150	33	150	143
10-9-2014	150	33	150	143
9-9-2014	150	34	150	143
8-9-2014	150	34	150	143
7-9-2014	150	34	150	143

# Weekly SLA Customer Report

Customer LLG\_Production  
Database ID 53



DATABASE PERFORMANCE LLGDB\_Production

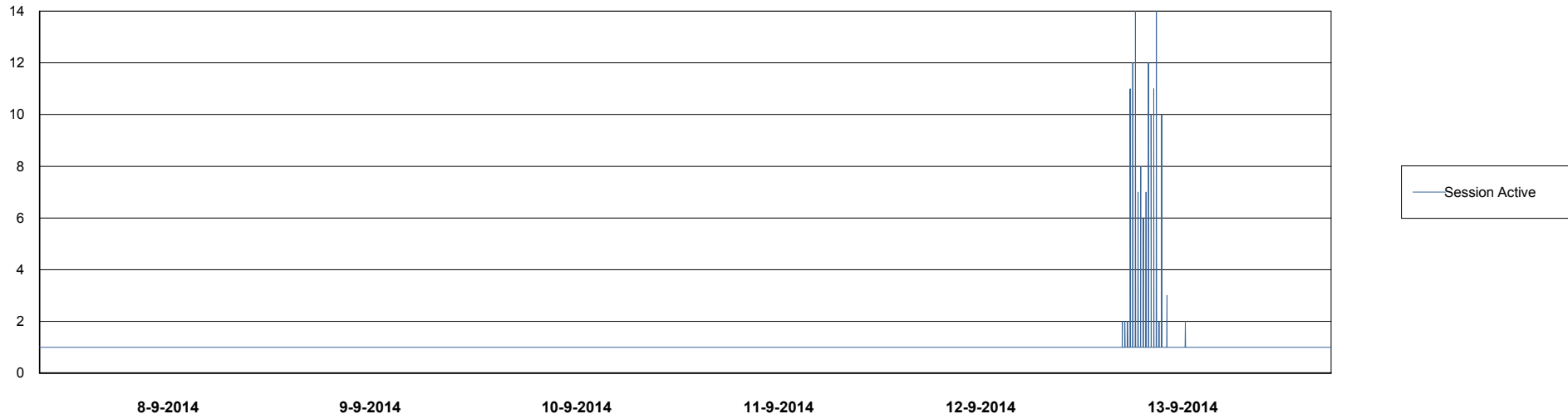
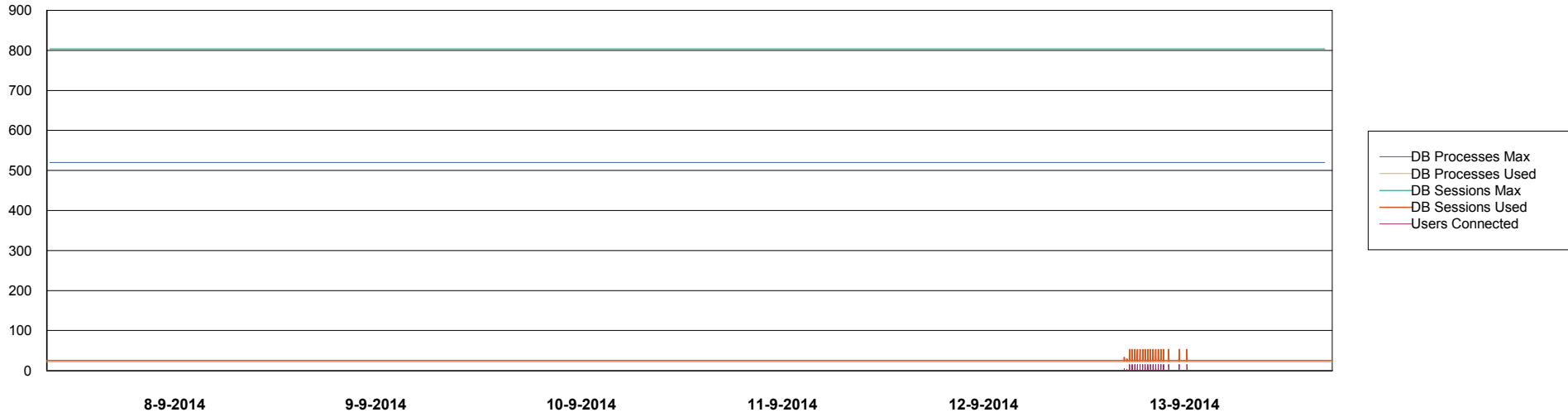


# Weekly SLA Customer Report

Customer LLG\_Production  
Database ID 53



DATABASE PERFORMANCE LLGDB\_Standby



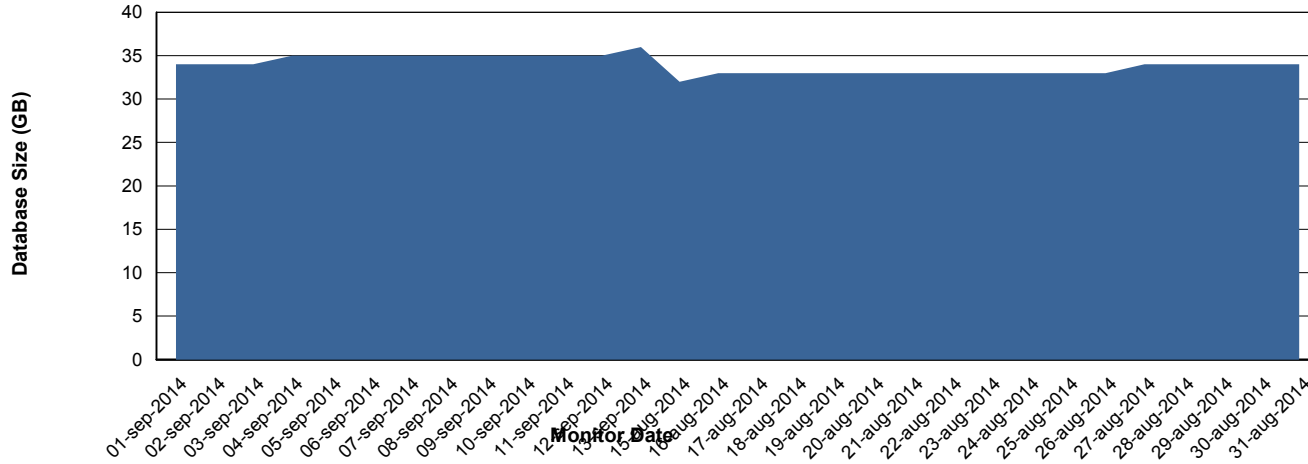
# Weekly SLA Customer Report

Customer LLG\_Production  
 Database ID 53



=====  
 DATABASE SIZE LLGDB\_Production  
 =====

## Database growth over last month



=====  
 DATABASE TABLESPACES LLGDB\_Production  
 =====

### TOTAL DATABASE SIZE PER TABLESPACE

Date	Tablespace Name	Filesize (Gb)	Usedsize (Gb)	Percentage free
13-9-2014	ABSDATA	20	12	40
	INDX	40	21	48
12-9-2014	ABSDATA	20	12	40
	INDX	40	21	48
11-9-2014	ABSDATA	20	12	40
	INDX	40	21	48
10-9-2014	ABSDATA	20	12	40
	INDX	40	21	48
9-9-2014	ABSDATA	20	12	40
	INDX	40	21	48
8-9-2014	ABSDATA	20	12	40
	INDX	40	21	48
7-9-2014	ABSDATA	20	12	40
	INDX	40	21	48

# Weekly SLA Customer Report

Customer LLG\_Production  
Database ID 53



=====  
STANDBY DATABASE HEALTH LLG\_Production  
=====

### Recovery lag for last 7 days



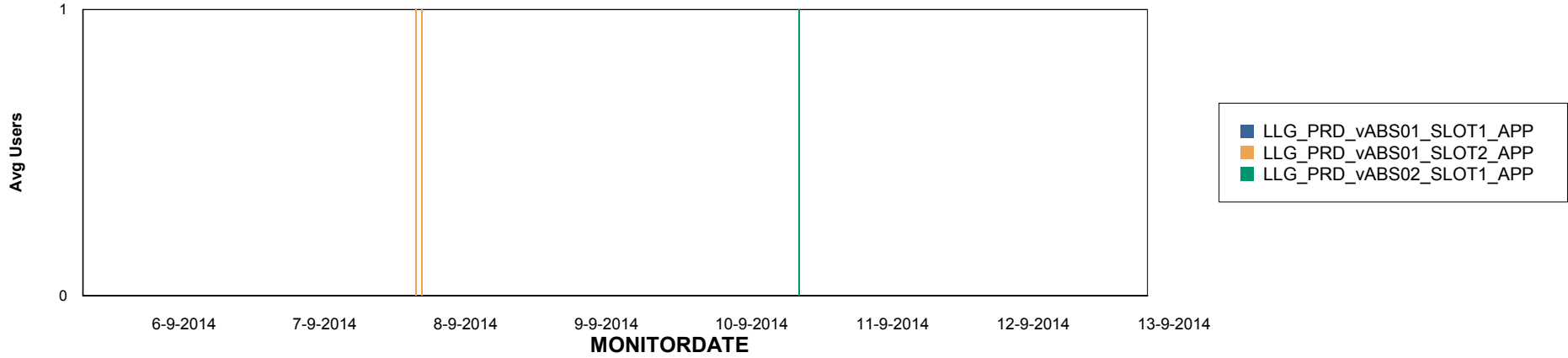
# Weekly SLA Customer Report

Customer LLG\_Production  
Database ID 53

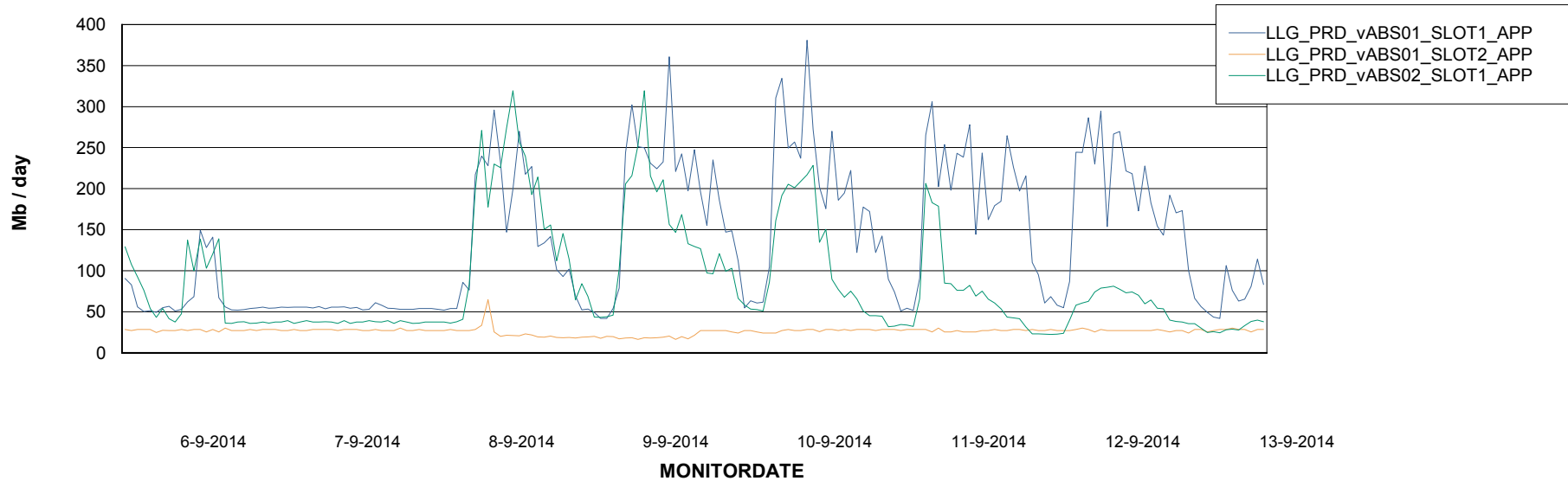


## ABSolute Application Server Services

### Disaster per ABS Server



### Avg memory used per ABS Server Service



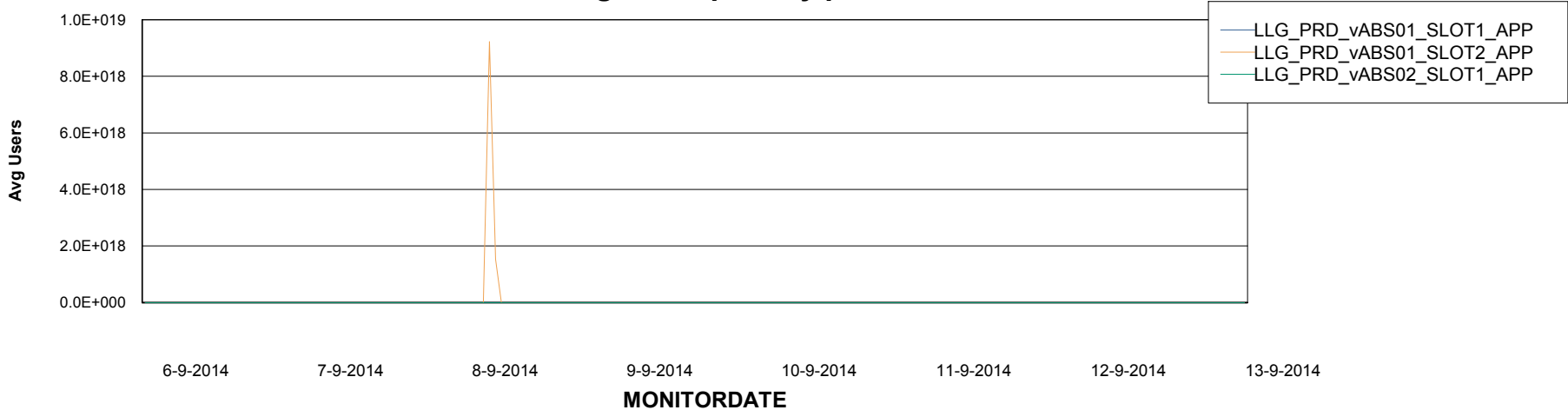
# Weekly SLA Customer Report

Customer LLG\_Production  
Database ID 53



=====  
ABSolute Application Server Services  
=====

### Avg users per day per ABS server



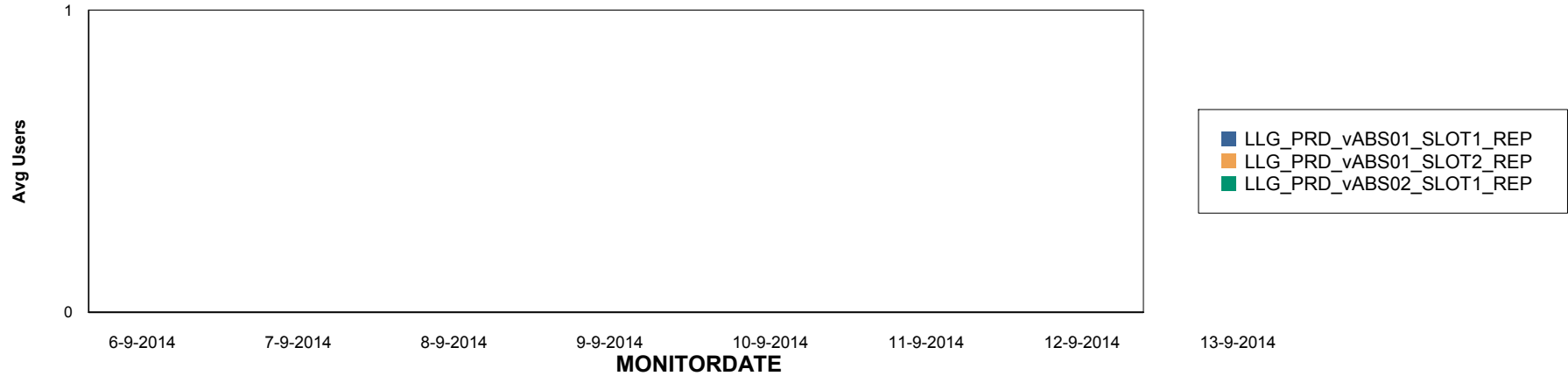
# Weekly SLA Customer Report

Customer LLG\_Production  
Database ID 53

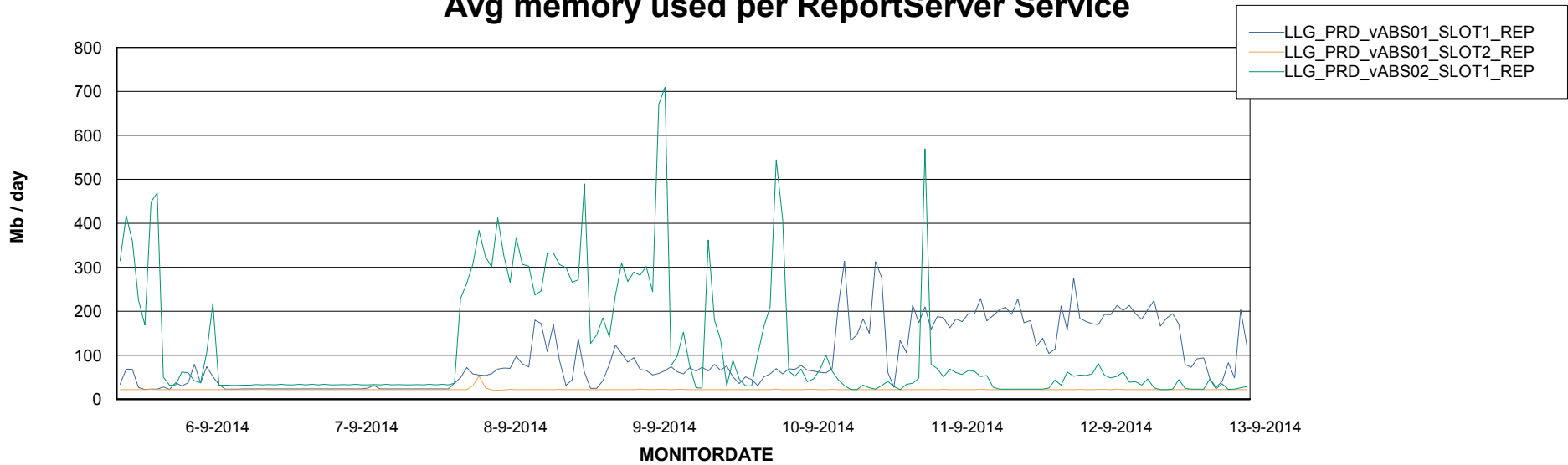


=====  
ABSolute Application ReportServer Services  
=====

## Disaster per ReportServer



## Avg memory used per ReportServer Service



# Weekly SLA Customer Report

Customer LLG\_Production  
Database ID 53



## Disaster per ABS component

