

Weekly SLA Customer Report

Customer JWR Production
 Database ID 43



=====
 HARDDISK USAGE JWR_PRD_JWR-ABS-01
 =====

	Used disk space on / (GB)	Total disk space on / (GB)	Free disk space on / (GB)
13-9-2014	27	49	20
12-9-2014	27	49	20
11-9-2014	27	49	20
10-9-2014	27	49	20
9-9-2014	27	49	20
8-9-2014	27	49	20
7-9-2014	27	49	20

=====
 HARDDISK USAGE JWR_PRD_JWR-ABS-02
 =====

	Used disk space on / (GB)	Total disk space on / (GB)	Free disk space on / (GB)
13-9-2014	25	49	22
12-9-2014	24	49	22
11-9-2014	24	49	22
10-9-2014	24	49	22
9-9-2014	24	49	22
8-9-2014	24	49	22
7-9-2014	24	49	22

Weekly SLA Customer Report

Customer JWR Production
 Database ID 43



=====
 HARDDISK USAGE JWR_PRD_JWR-ODB-01
 =====

	Used disk space on / (GB)	Total disk space on / (GB)	Free disk space on / (GB)
13-9-2014	74	90	12
12-9-2014	74	90	11
11-9-2014	74	90	11
10-9-2014	74	90	11
9-9-2014	74	90	11
8-9-2014	74	90	11
7-9-2014	74	90	12

=====
 HARDDISK USAGE JWR_PRD_JWR-ODB-02
 =====

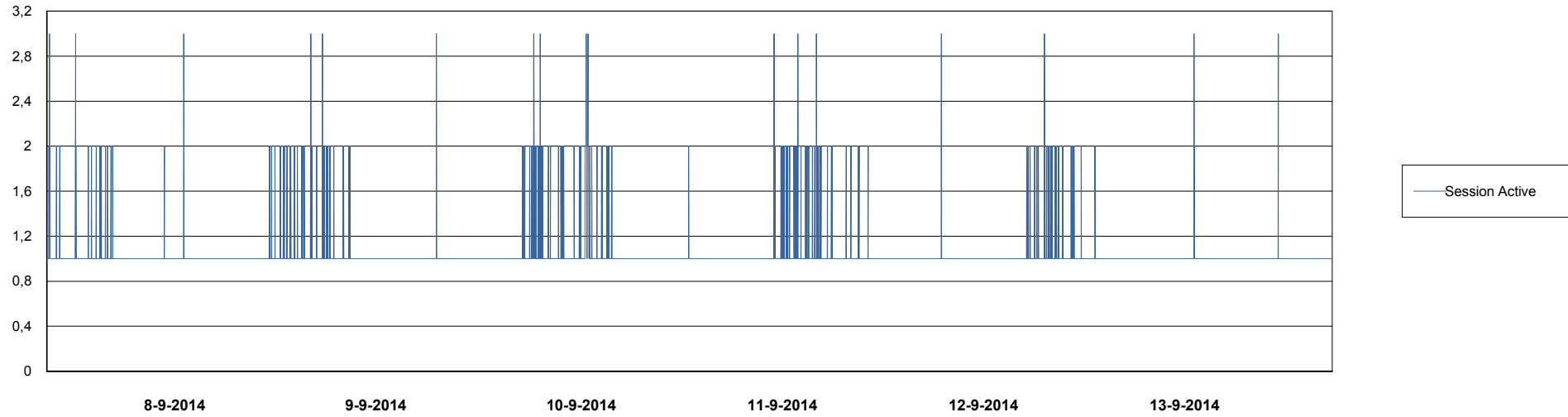
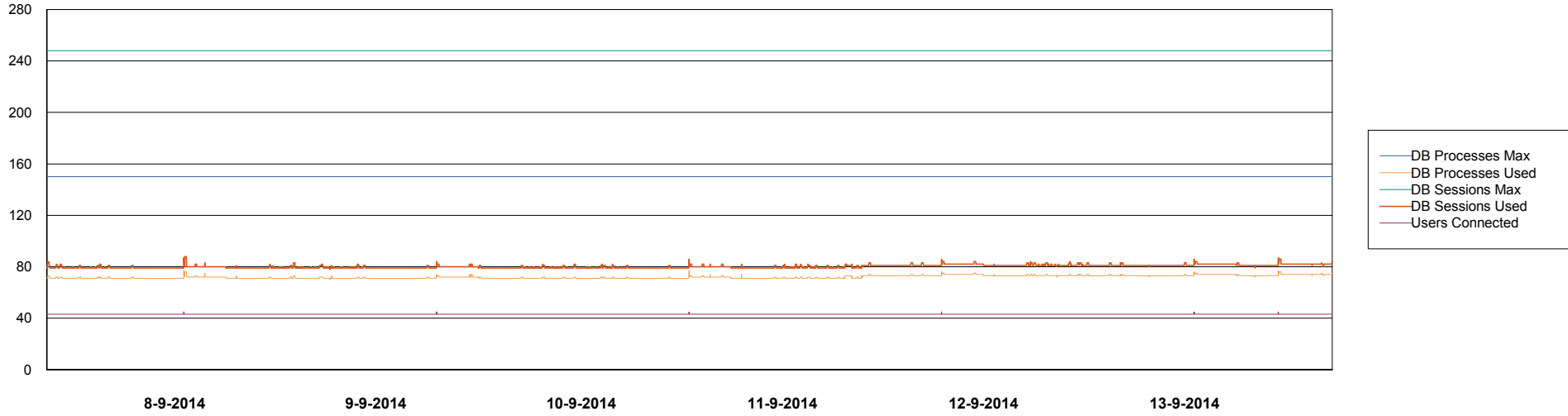
	Used disk space on / (GB)	Total disk space on / (GB)	Free disk space on / (GB)
13-9-2014	91	138	40
12-9-2014	91	138	39
11-9-2014	91	138	39
10-9-2014	91	138	39
9-9-2014	91	138	40
8-9-2014	91	138	39
7-9-2014	91	138	40

Weekly SLA Customer Report

Customer JWR Production
Database ID 43



DATABASE PERFORMANCE JWRDB_Production



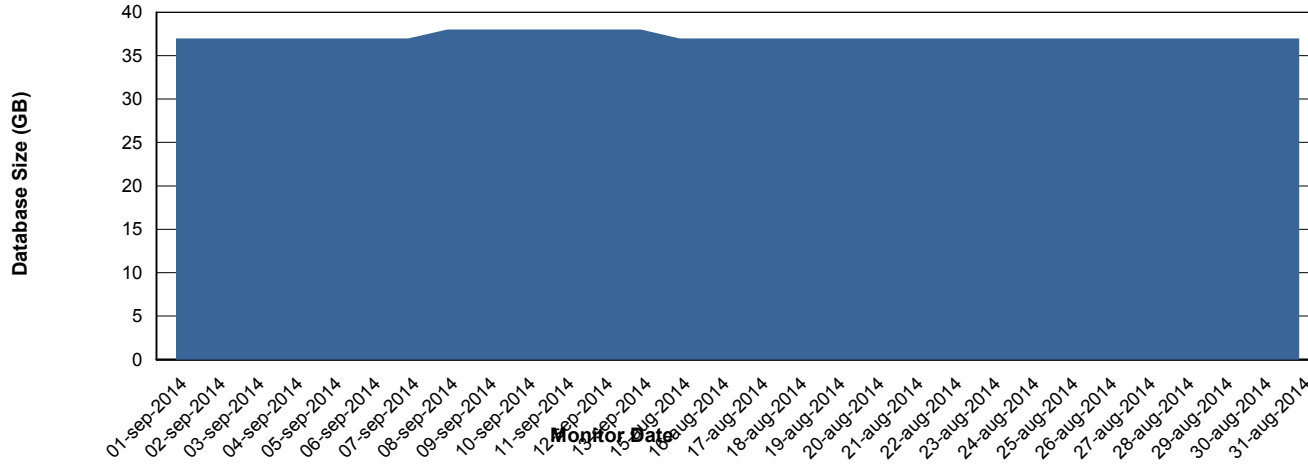
Weekly SLA Customer Report

Customer JWR Production
 Database ID 43



=====
 DATABASE SIZE JWRDB_Production
 =====

Database growth over last month



=====
 DATABASE TABLESPACES JWRDB_Production
 =====

TOTAL DATABASE SIZE PER TABLESPACE

Date	Tablespace Name	Filesize (Gb)	Usedsize (Gb)	Percentage free
13-9-2014	ABSDATA	15	11	27
	INDX	32	26	19
12-9-2014	ABSDATA	15	11	27
	INDX	32	26	19
11-9-2014	ABSDATA	15	11	27
	INDX	32	26	19
10-9-2014	ABSDATA	15	11	27
	INDX	32	26	19
9-9-2014	ABSDATA	15	11	27
	INDX	32	26	19
8-9-2014	ABSDATA	15	11	27
	INDX	32	26	19
7-9-2014	ABSDATA	15	11	27
	INDX	32	26	19

Weekly SLA Customer Report

Customer JWR Production
Database ID 43



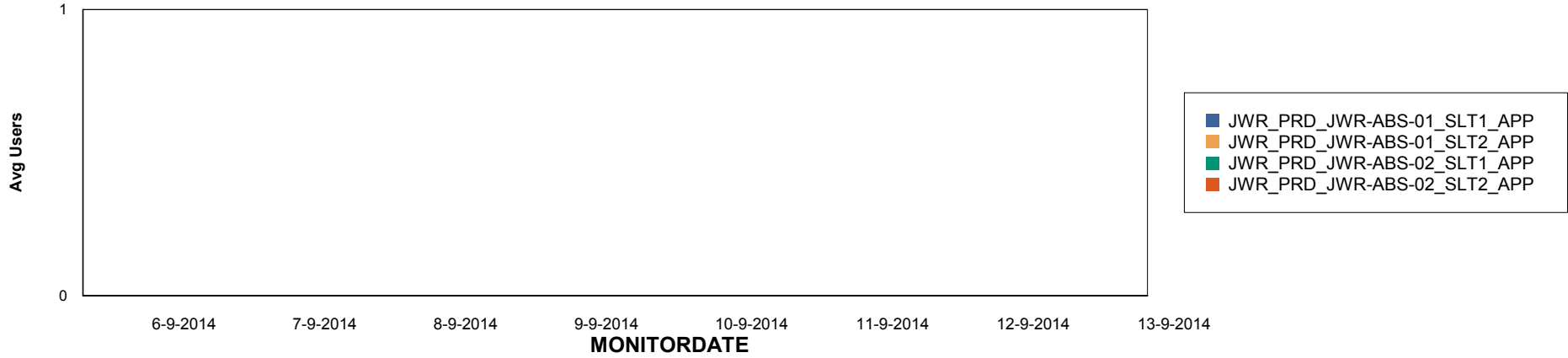
Weekly SLA Customer Report

Customer JWR Production
Database ID 43

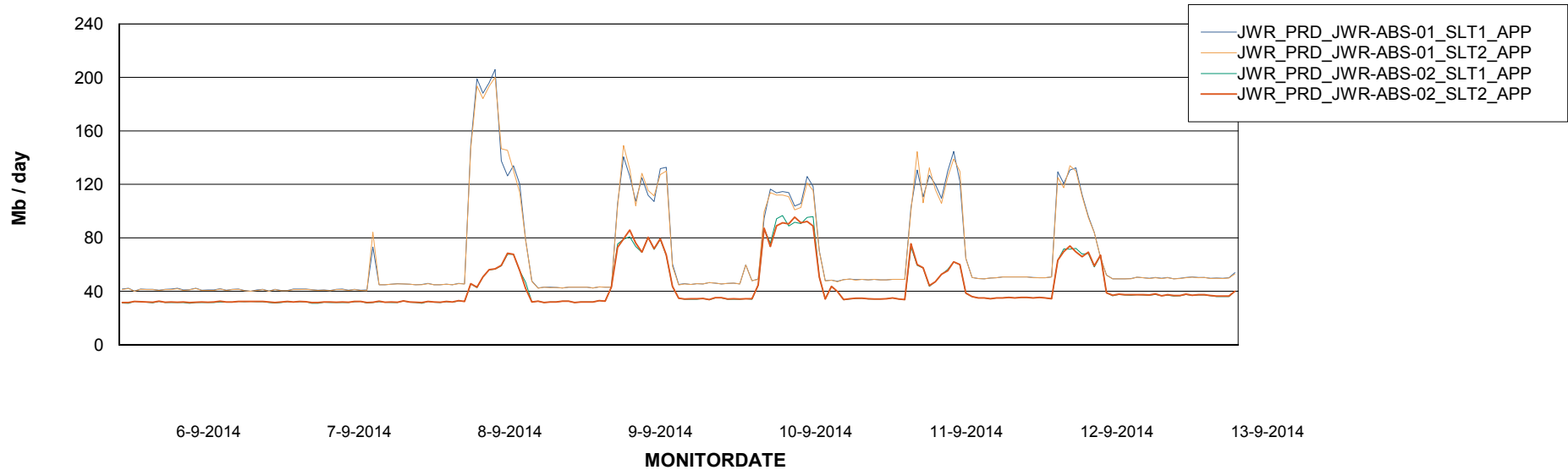


=====
ABSolute Application Server Services
=====

Disaster per ABS Server



Avg memory used per ABS Server Service



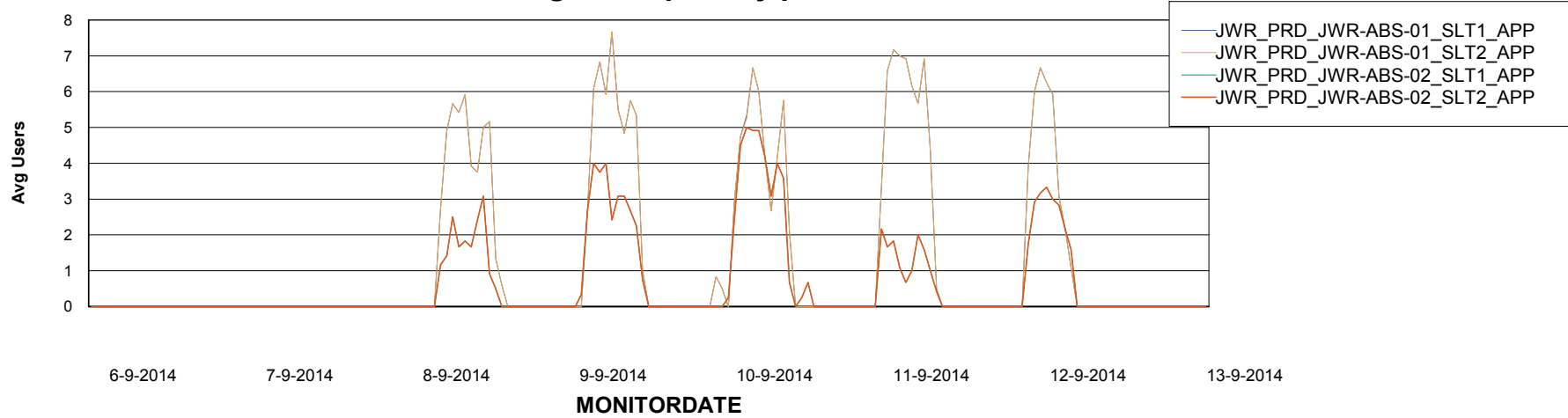
Weekly SLA Customer Report

Customer JWR Production
Database ID 43



=====
ABSolute Application Server Services
=====

Avg users per day per ABS server



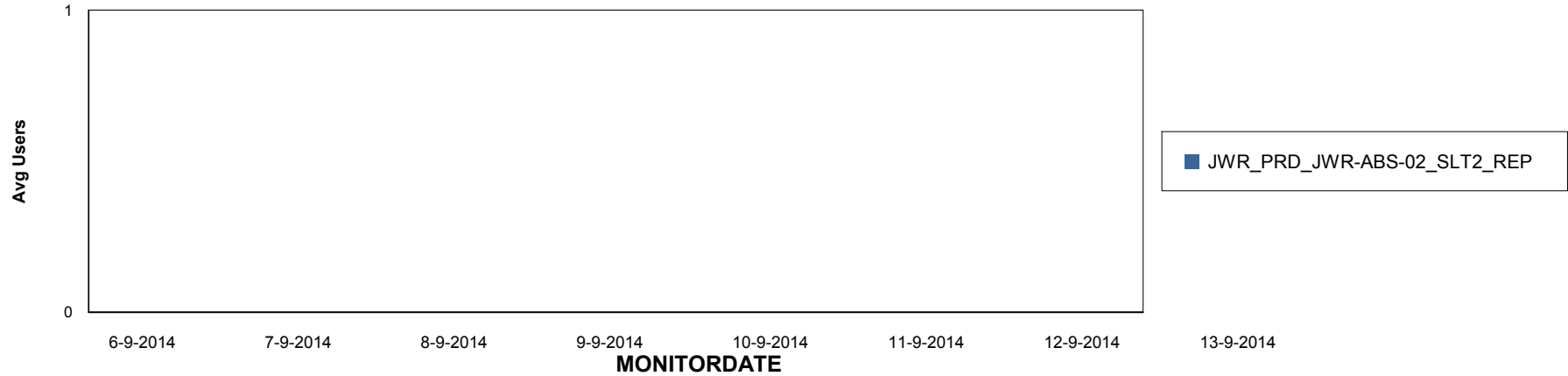
Weekly SLA Customer Report

Customer JWR Production
Database ID 43

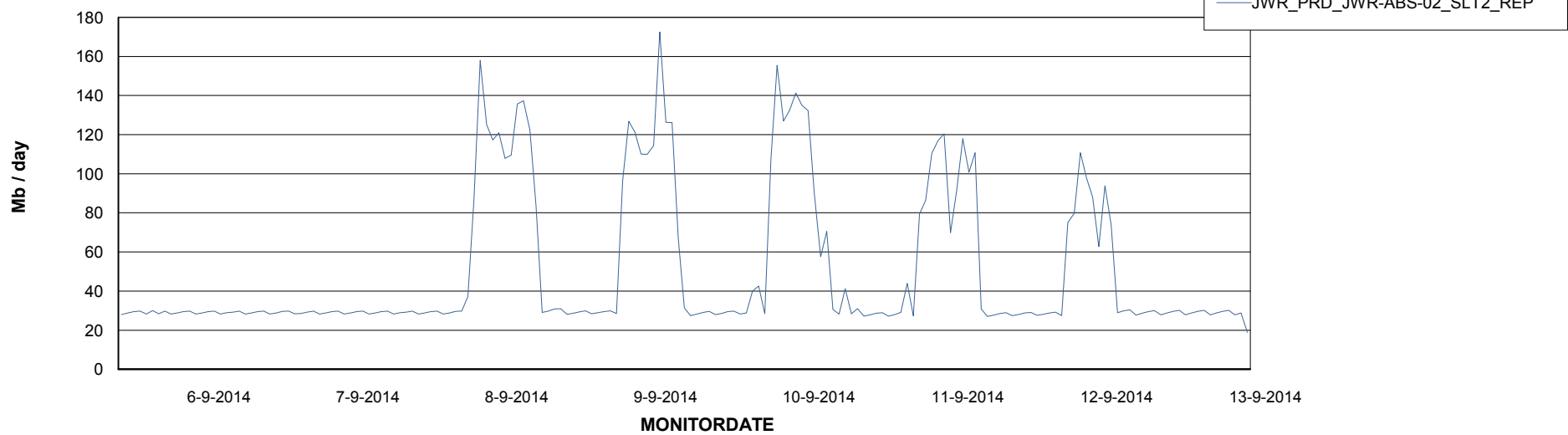


=====
ABSolute Application ReportServer Services
=====

Disaster per ReportServer



Avg memory used per ReportServer Service



Weekly SLA Customer Report

Customer JWR Production
Database ID 43



Disaster per ABS component

