

Weekly SLA Customer Report

Customer DFD Production
 Database ID 39



=====
 HARDDISK USAGE DFD_PRD_ABSWEB
 =====

	Total disk space on C (GB)	Free disk space on C (GB)
13-9-2014	60	27
12-9-2014	60	27
11-9-2014	60	27
10-9-2014	60	27
9-9-2014	60	27
8-9-2014	60	27
7-9-2014	60	27

=====
 HARDDISK USAGE DFD_PRD_ORACLE2
 =====

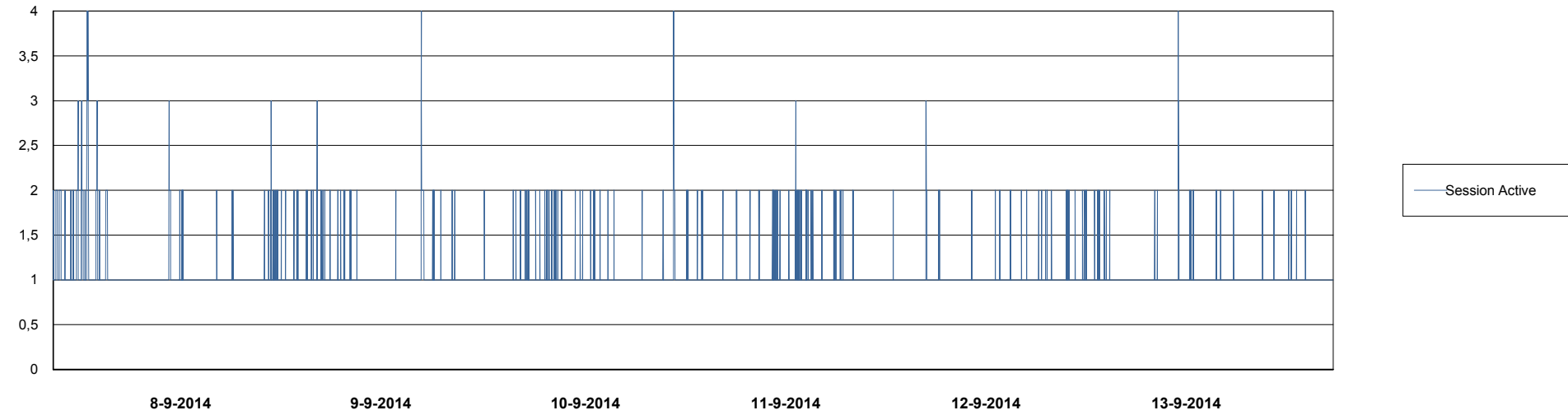
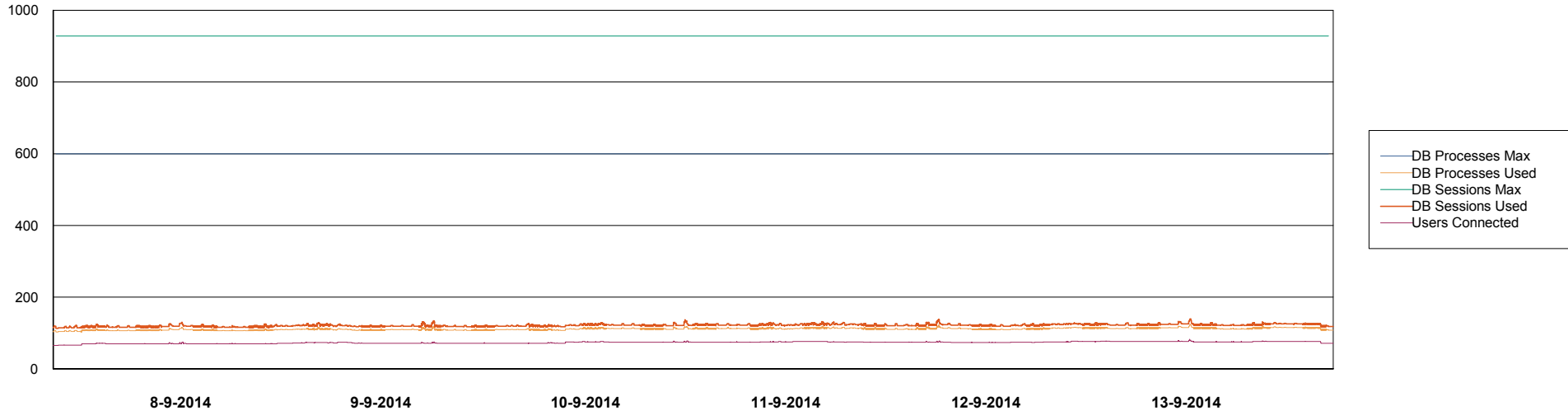
	Total disk space on C (GB)	Free disk space on C (GB)	Total disk space on D (GB)	Free disk space on D (GB)	Total disk space on E (GB)	Free disk space on E (GB)	Total disk space on F (GB)	Free disk space on F (GB)
13-9-2014	78	59	479	358	400	120	800	764
12-9-2014	78	59	479	358	400	121	800	764
11-9-2014	78	59	479	358	400	122	800	764
10-9-2014	78	59	479	358	400	123	800	764
9-9-2014	78	59	479	358	400	124	800	764
8-9-2014	78	59	479	358	400	125	800	764
7-9-2014	78	59	479	358	400	125	800	764

Weekly SLA Customer Report

Customer DFD Production
Database ID 39



DATABASE PERFORMANCE DFDDB_Production

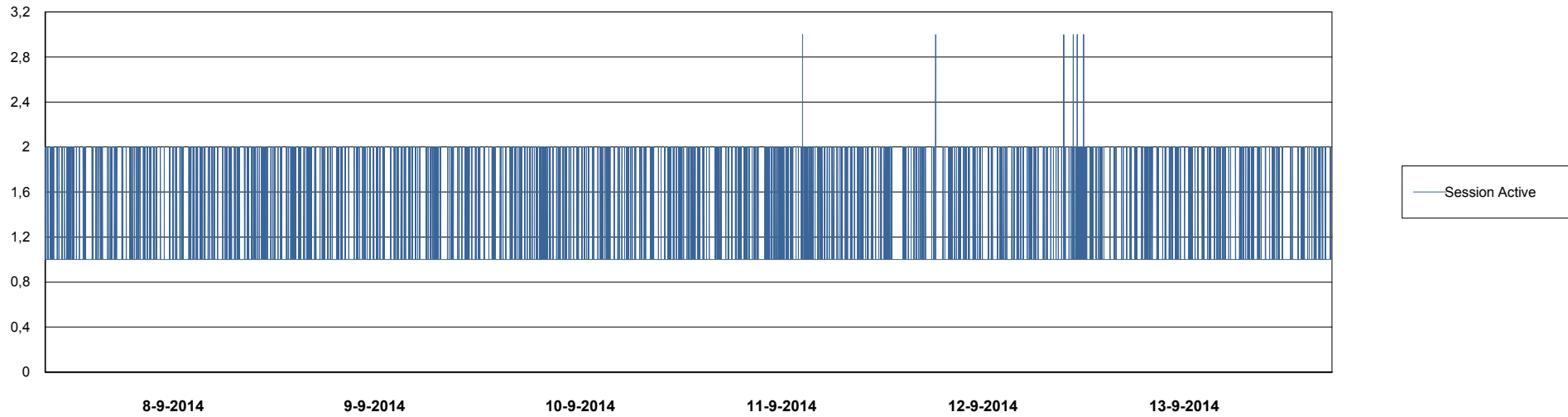
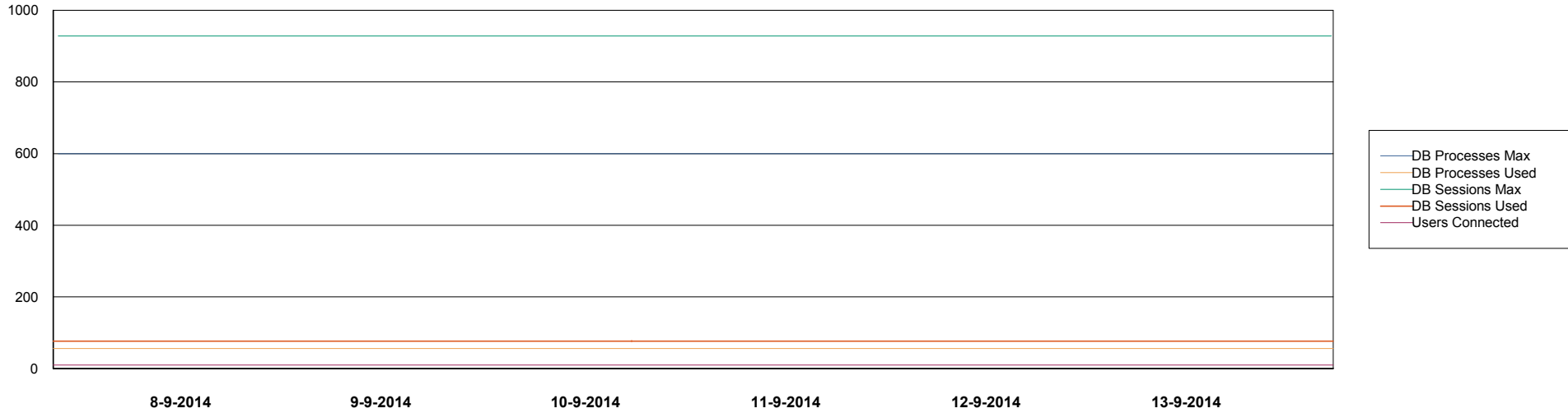


Weekly SLA Customer Report

Customer DFD Production
Database ID 39



DATABASE PERFORMANCE DFDDB_Standby



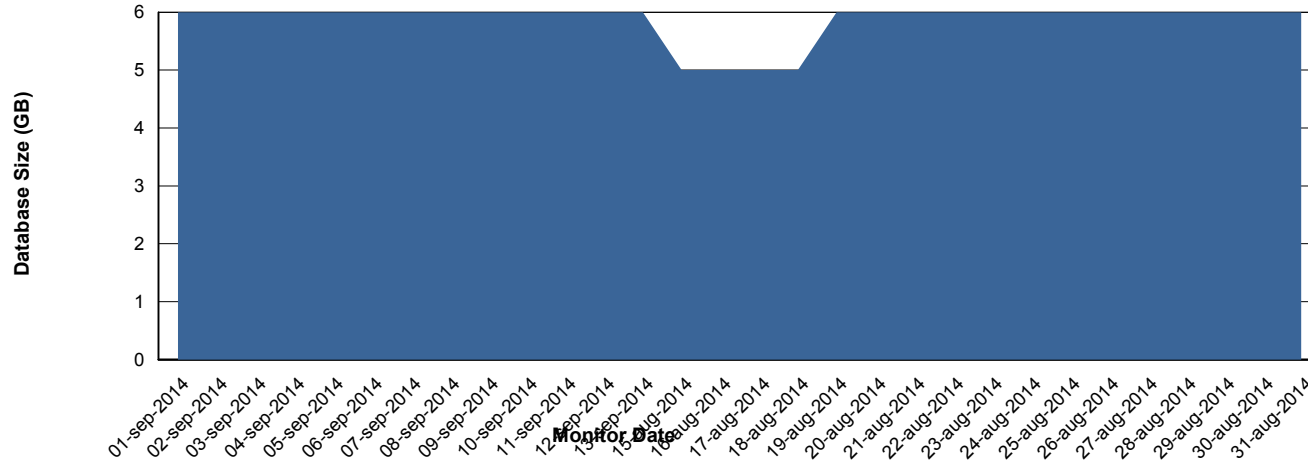
Weekly SLA Customer Report

Customer DFD Production
 Database ID 39



=====
 DATABASE SIZE DFDDB_Production
 =====

Database growth over last month



=====
 DATABASE TABLESPACES DFDDB_Production
 =====

TOTAL DATABASE SIZE PER TABLESPACE

Date	Tablespace Name	Filesize (Gb)	Usedsize (Gb)	Percentage free
13-9-2014	ABSDATA	5	0	100
	INDX	10	0	100
12-9-2014	ABSDATA	5	0	100
	INDX	10	0	100
11-9-2014	ABSDATA	5	0	100
	INDX	10	0	100
10-9-2014	ABSDATA	5	0	100
	INDX	10	0	100
9-9-2014	ABSDATA	5	0	100
	INDX	10	0	100
8-9-2014	ABSDATA	5	0	100
	INDX	10	0	100
7-9-2014	ABSDATA	5	0	100
	INDX	10	0	100

Weekly SLA Customer Report

Customer DFD Production
Database ID 39



=====
STANDBY DATABASE HEALTH DFD Production
=====

Recovery lag for last 7 days



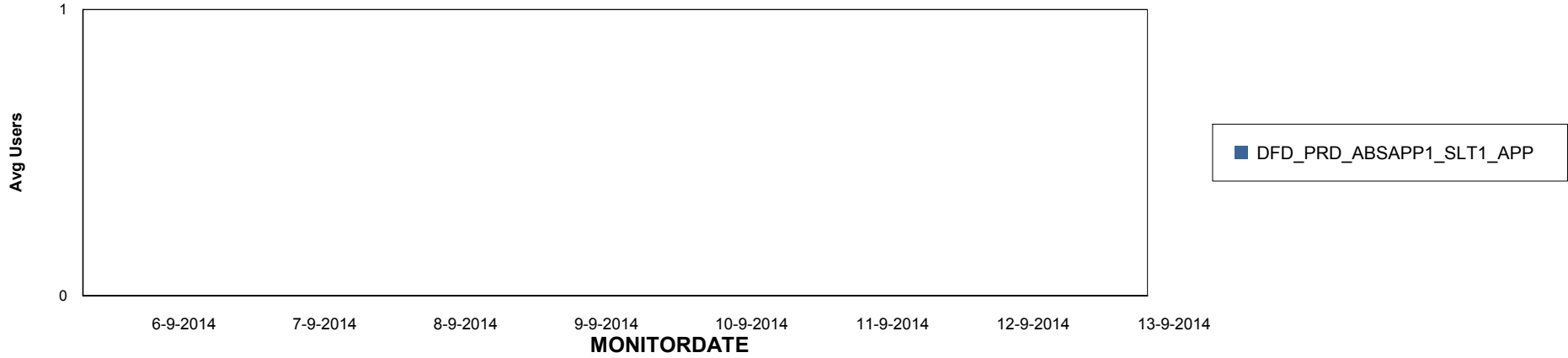
Weekly SLA Customer Report

Customer DFD Production
Database ID 39

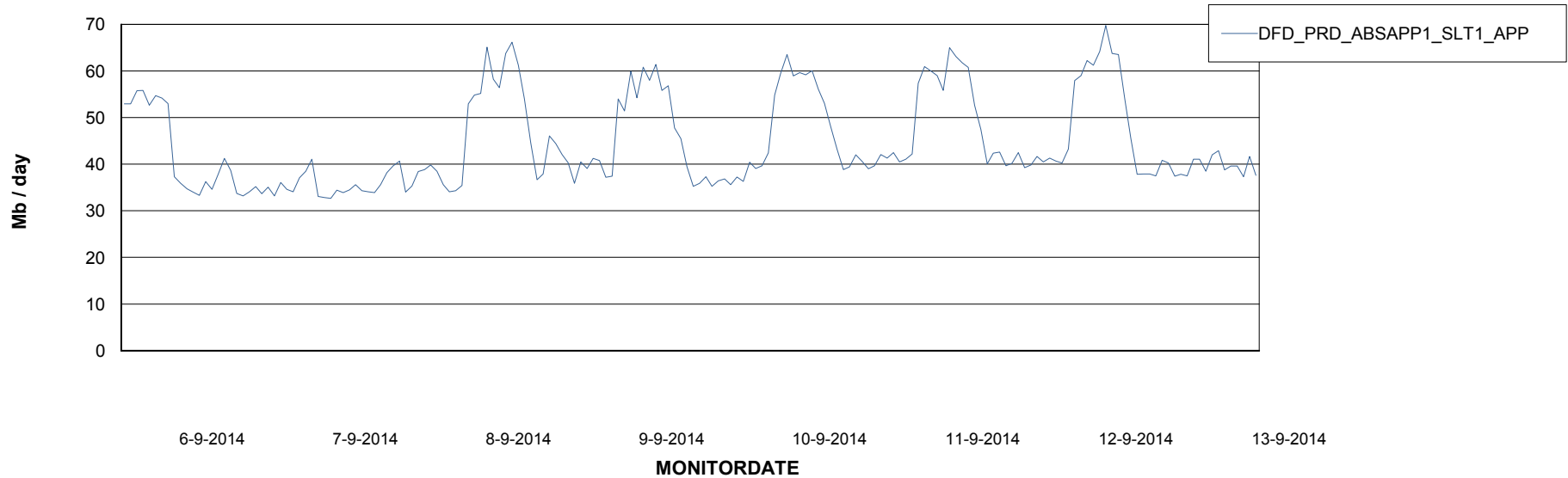


=====
ABSolute Application Server Services
=====

Disaster per ABS Server



Avg memory used per ABS Server Service



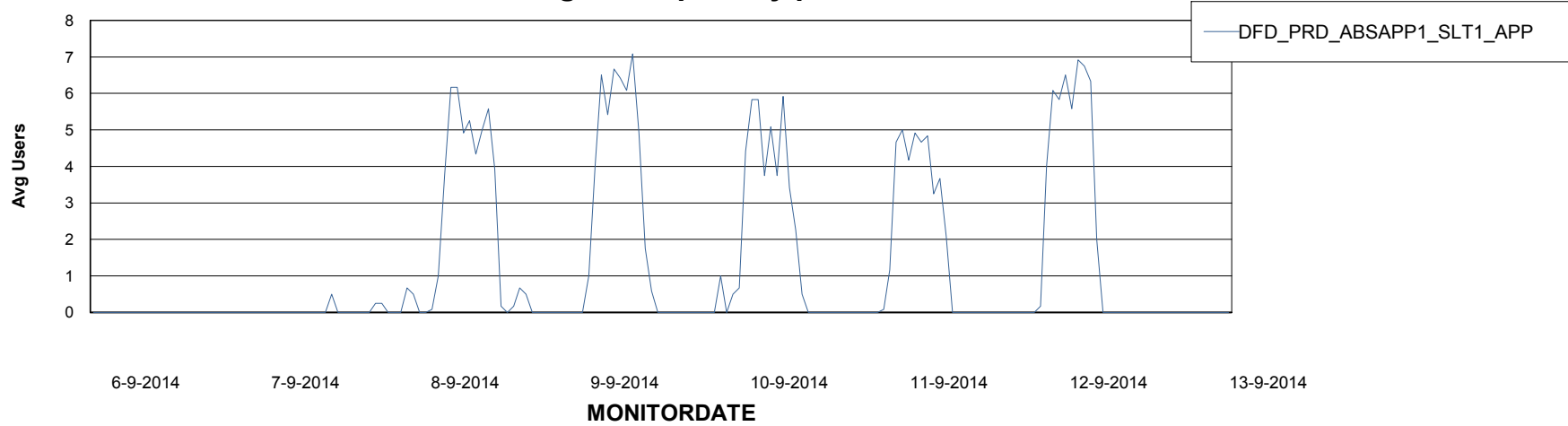
Weekly SLA Customer Report

Customer DFD Production
Database ID 39



=====
ABSolute Application Server Services
=====

Avg users per day per ABS server



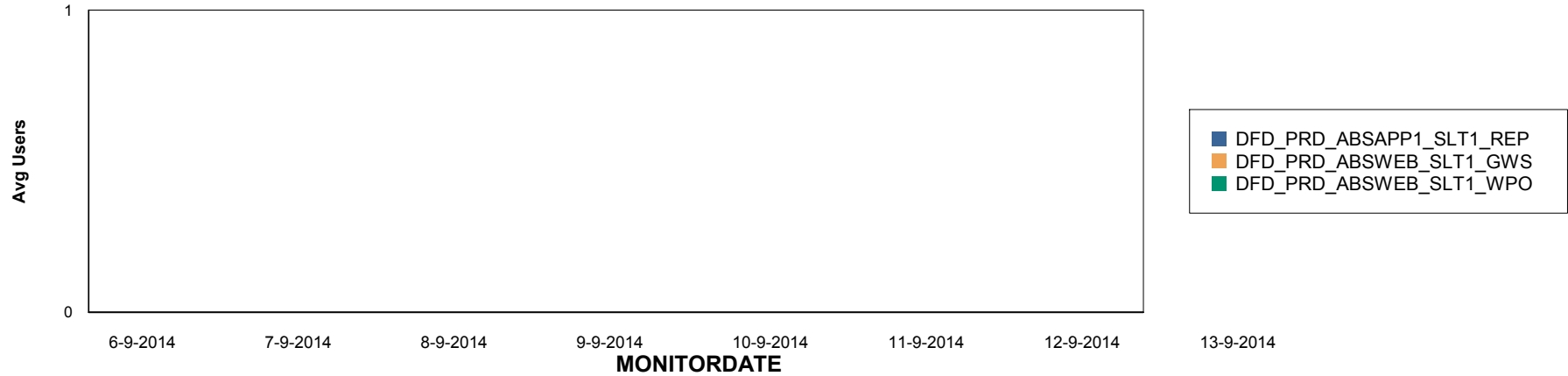
Weekly SLA Customer Report

Customer DFD Production
Database ID 39

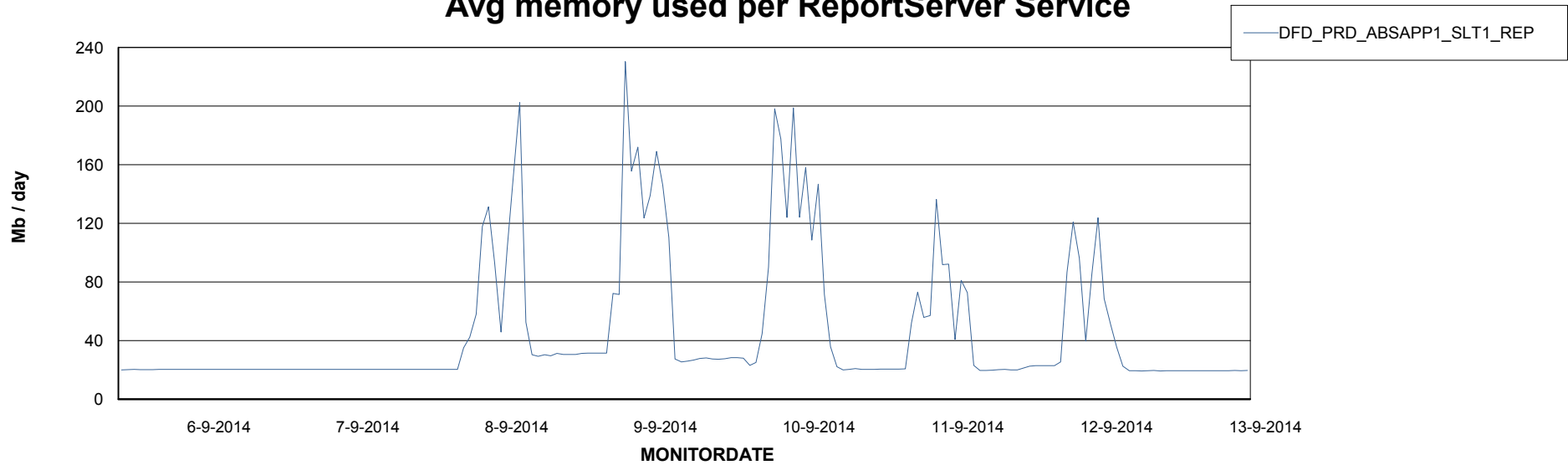


=====
ABSolute Application ReportServer Services
=====

Disaster per ReportServer



Avg memory used per ReportServer Service



Weekly SLA Customer Report

Customer DFD Production
Database ID 39



Disaster per ABS component

