

## Weekly SLA Customer Report

Customer      CSC\_Production  
 Database ID    50



=====  
 HARDDISK USAGE    CSC\_PRD\_ABSSRV  
 =====

|           | Total disk space<br>on C (GB) | Free disk space<br>on C (GB) | Total disk space<br>on D (GB) | Free disk space<br>on D (GB) | Total disk space<br>on E (GB) | Free disk space<br>on E (GB) |
|-----------|-------------------------------|------------------------------|-------------------------------|------------------------------|-------------------------------|------------------------------|
| 13-9-2014 | 102                           | 72                           | 220                           | 155                          | 225                           | 82                           |
| 12-9-2014 | 102                           | 72                           | 220                           | 155                          | 225                           | 85                           |
| 11-9-2014 | 102                           | 72                           | 220                           | 155                          | 225                           | 88                           |
| 10-9-2014 | 102                           | 72                           | 220                           | 155                          | 225                           | 91                           |
| 9-9-2014  | 102                           | 72                           | 220                           | 155                          | 225                           | 95                           |
| 8-9-2014  | 102                           | 72                           | 220                           | 155                          | 225                           | 99                           |
| 7-9-2014  | 102                           | 72                           | 220                           | 155                          | 225                           | 100                          |

=====  
 HARDDISK USAGE    CSC\_PRD\_ABS01  
 =====

|           | Total disk space<br>on C (GB) | Free disk space<br>on C (GB) | Total disk space<br>on D (GB) | Free disk space<br>on D (GB) | Total disk space<br>on E (GB) | Free disk space<br>on E (GB) |
|-----------|-------------------------------|------------------------------|-------------------------------|------------------------------|-------------------------------|------------------------------|
| 13-9-2014 | 110                           | 59                           | 210                           | 116                          | 300                           | 131                          |
| 12-9-2014 | 110                           | 59                           | 210                           | 116                          | 300                           | 129                          |
| 11-9-2014 | 110                           | 60                           | 210                           | 116                          | 300                           | 132                          |
| 10-9-2014 | 110                           | 58                           | 210                           | 116                          | 300                           | 136                          |
| 9-9-2014  | 110                           | 56                           | 210                           | 116                          | 300                           | 138                          |
| 8-9-2014  | 110                           | 57                           | 210                           | 117                          | 300                           | 146                          |
| 7-9-2014  | 110                           | 57                           | 210                           | 118                          | 300                           | 152                          |

## Weekly SLA Customer Report

Customer      CSC\_Production  
 Database ID    50



=====  
 HARDDISK USAGE    CSC\_PRD\_ABS02  
 =====

|           | Total disk space<br>on C (GB) | Free disk space<br>on C (GB) |
|-----------|-------------------------------|------------------------------|
| 13-9-2014 | 80                            | 31                           |
| 12-9-2014 | 80                            | 31                           |
| 11-9-2014 | 80                            | 31                           |
| 10-9-2014 | 80                            | 31                           |
| 9-9-2014  | 80                            | 31                           |
| 8-9-2014  | 80                            | 31                           |
| 7-9-2014  | 80                            | 31                           |

=====  
 HARDDISK USAGE    CSC\_PRD\_WEBSRV  
 =====

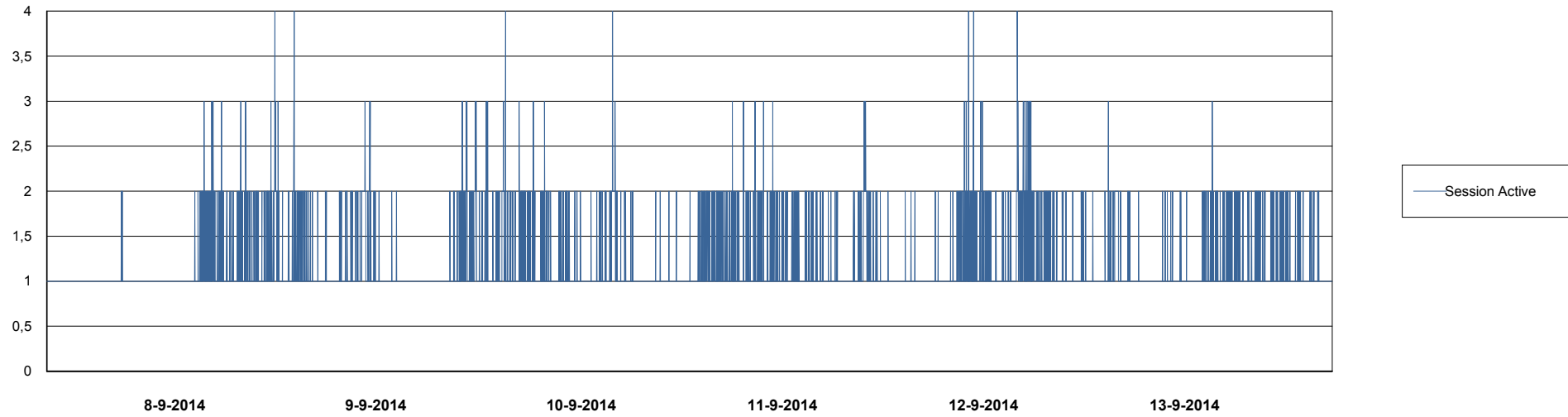
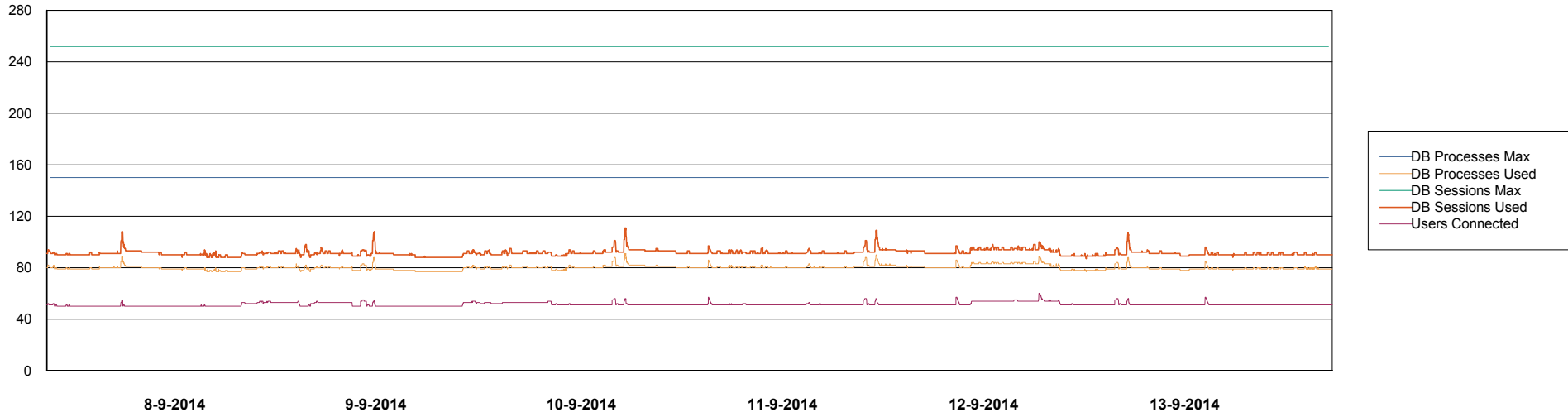
|           | Used disk space<br>on C (GB) | Total disk space<br>on C (GB) | Free disk space<br>on C (GB) |
|-----------|------------------------------|-------------------------------|------------------------------|
| 13-9-2014 | 34                           | 59                            | 25                           |
| 12-9-2014 | 34                           | 59                            | 25                           |
| 11-9-2014 | 34                           | 59                            | 25                           |
| 10-9-2014 | 33                           | 59                            | 26                           |
| 9-9-2014  | 32                           | 59                            | 26                           |
| 8-9-2014  | 32                           | 59                            | 26                           |
| 7-9-2014  | 32                           | 59                            | 26                           |

# Weekly SLA Customer Report

Customer CSC\_Production  
Database ID 50



DATABASE PERFORMANCE CSCDB\_Production

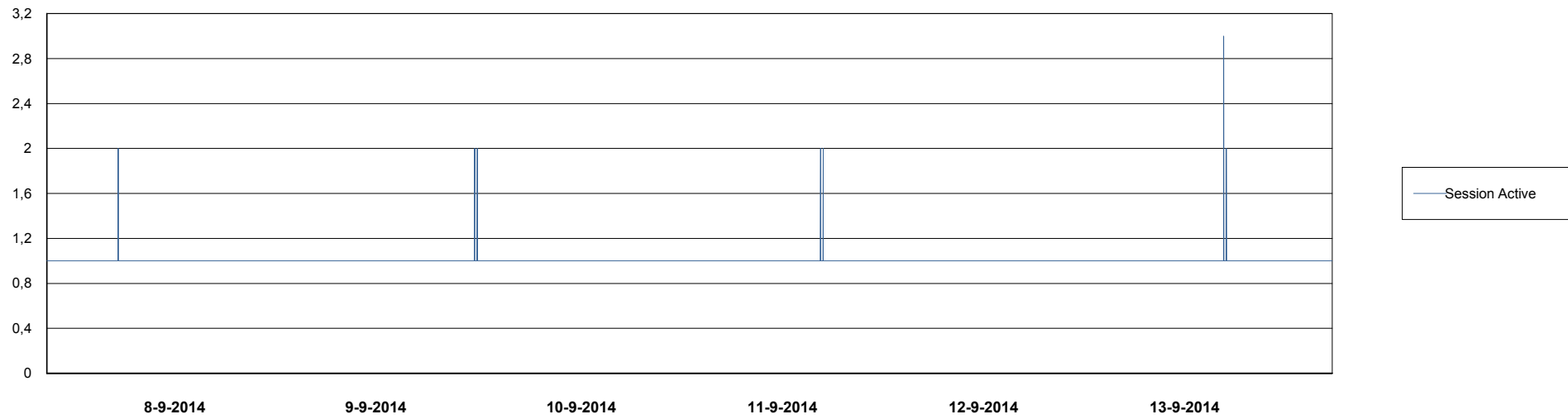
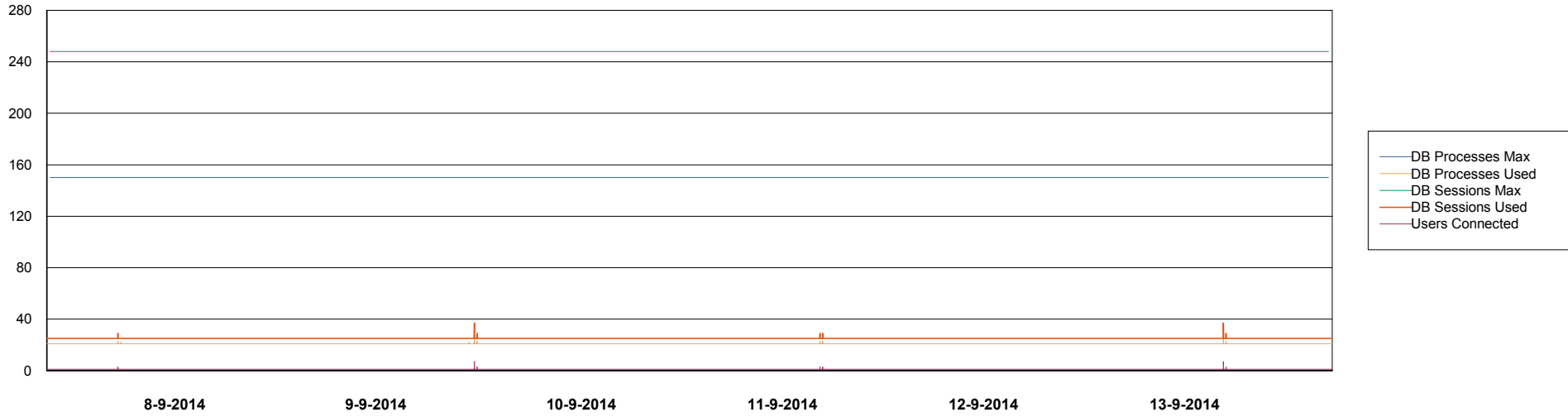


# Weekly SLA Customer Report

Customer CSC\_Production  
Database ID 50



DATABASE PERFORMANCE CSCDB\_Standby



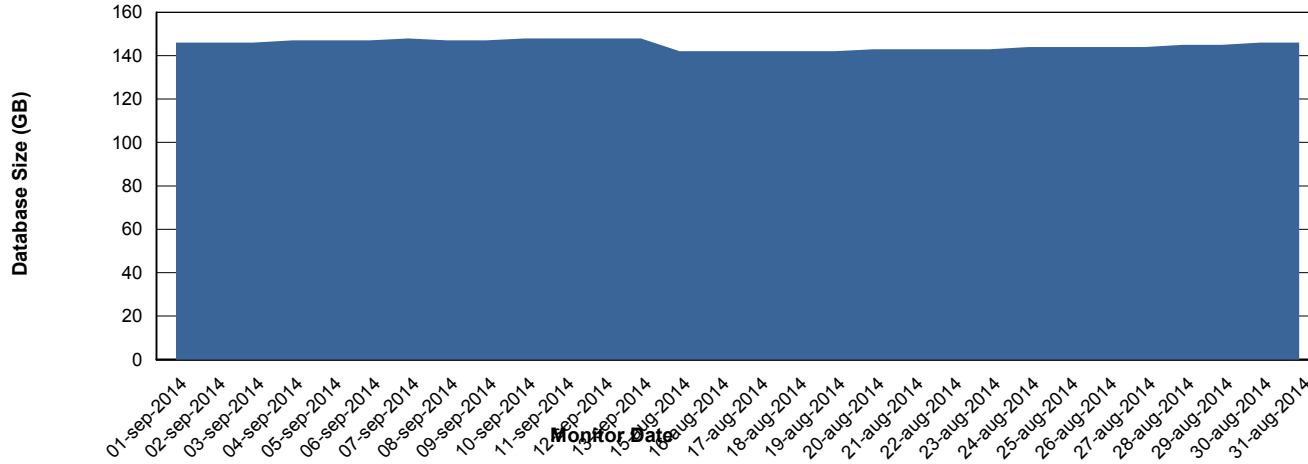
# Weekly SLA Customer Report

Customer CSC\_Production  
 Database ID 50



=====  
 DATABASE SIZE CSCDB\_Production  
 =====

## Database growth over last month



=====  
 DATABASE TABLESPACES CSCDB\_Production  
 =====

### TOTAL DATABASE SIZE PER TABLESPACE

| Date      | Tablespace Name | Filesize (Gb) | Usedsize (Gb) | Percentage free |
|-----------|-----------------|---------------|---------------|-----------------|
| 13-9-2014 | ABSDATA         | 49            | 40            | 18              |
|           | INDX            | 127           | 106           | 17              |
| 12-9-2014 | ABSDATA         | 49            | 40            | 18              |
|           | INDX            | 127           | 106           | 17              |
| 11-9-2014 | ABSDATA         | 49            | 40            | 18              |
|           | INDX            | 127           | 106           | 17              |
| 10-9-2014 | ABSDATA         | 49            | 40            | 18              |
|           | INDX            | 127           | 105           | 17              |
| 9-9-2014  | ABSDATA         | 49            | 40            | 18              |
|           | INDX            | 127           | 105           | 17              |
| 8-9-2014  | ABSDATA         | 49            | 40            | 18              |
|           | INDX            | 127           | 105           | 17              |
| 7-9-2014  | ABSDATA         | 47            | 40            | 15              |
|           | INDX            | 122           | 105           | 14              |

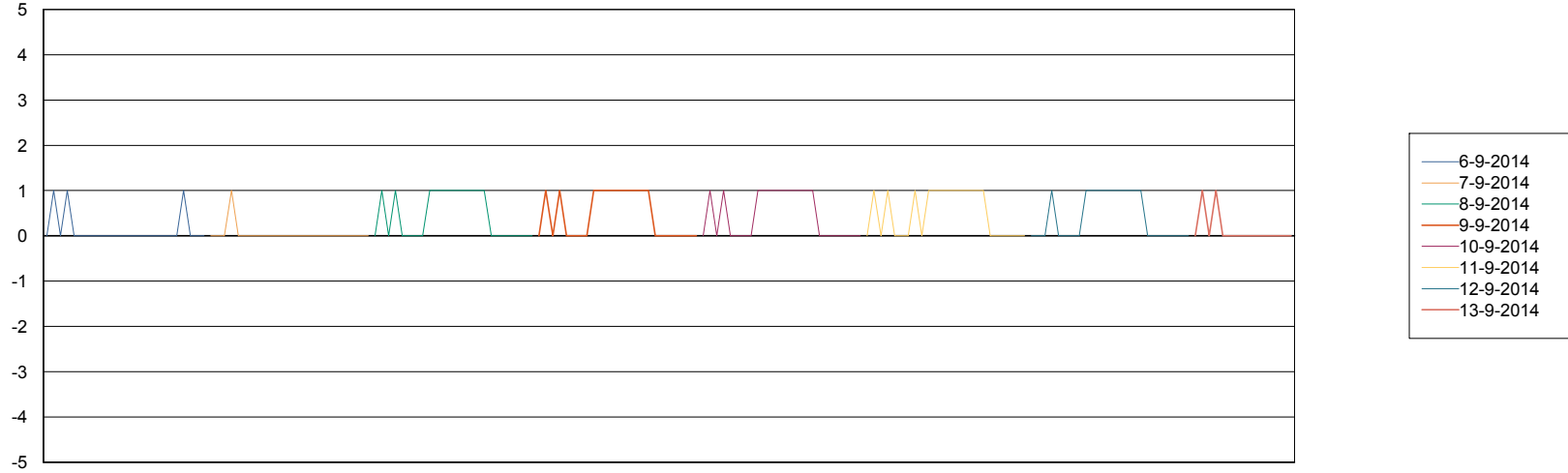
# Weekly SLA Customer Report

Customer CSC\_Production  
Database ID 50



=====  
STANDBY DATABASE HEALTH CSC\_Production  
=====

### Recovery lag for last 7 days



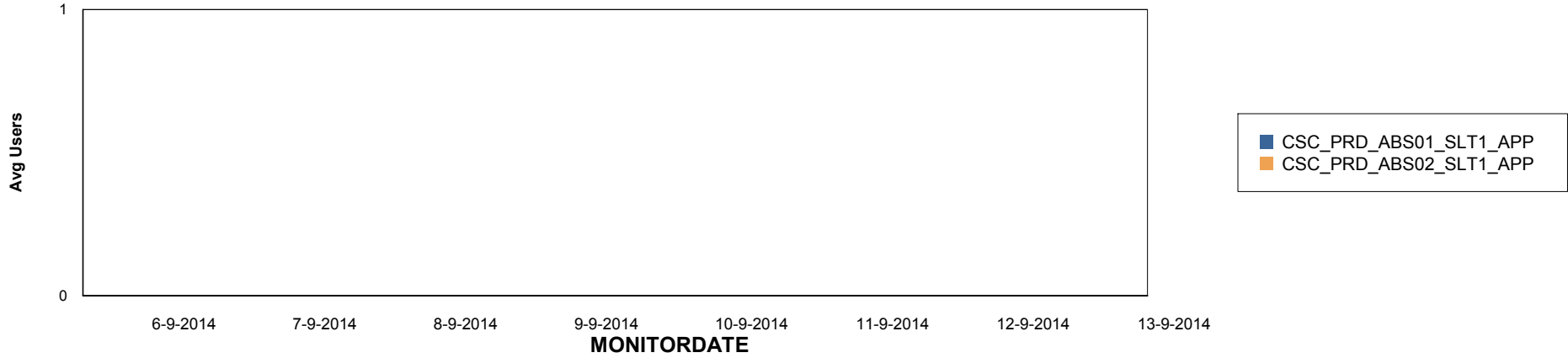
# Weekly SLA Customer Report

Customer CSC\_Production  
Database ID 50

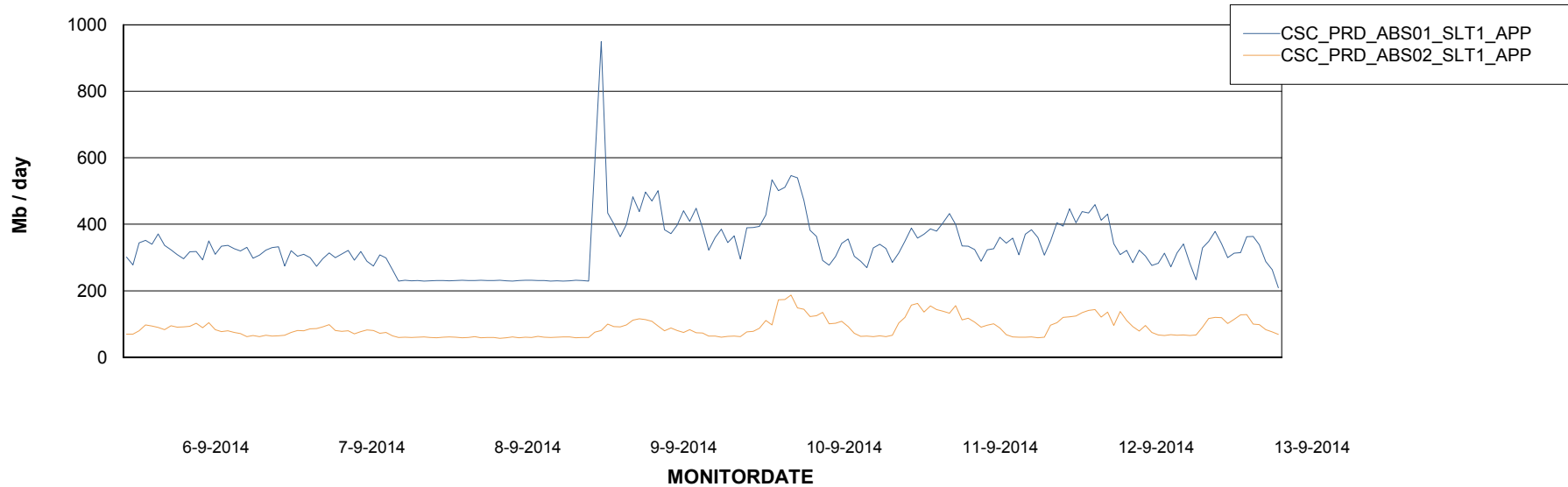


=====  
ABSolute Application Server Services  
=====

## Disaster per ABS Server



## Avg memory used per ABS Server Service



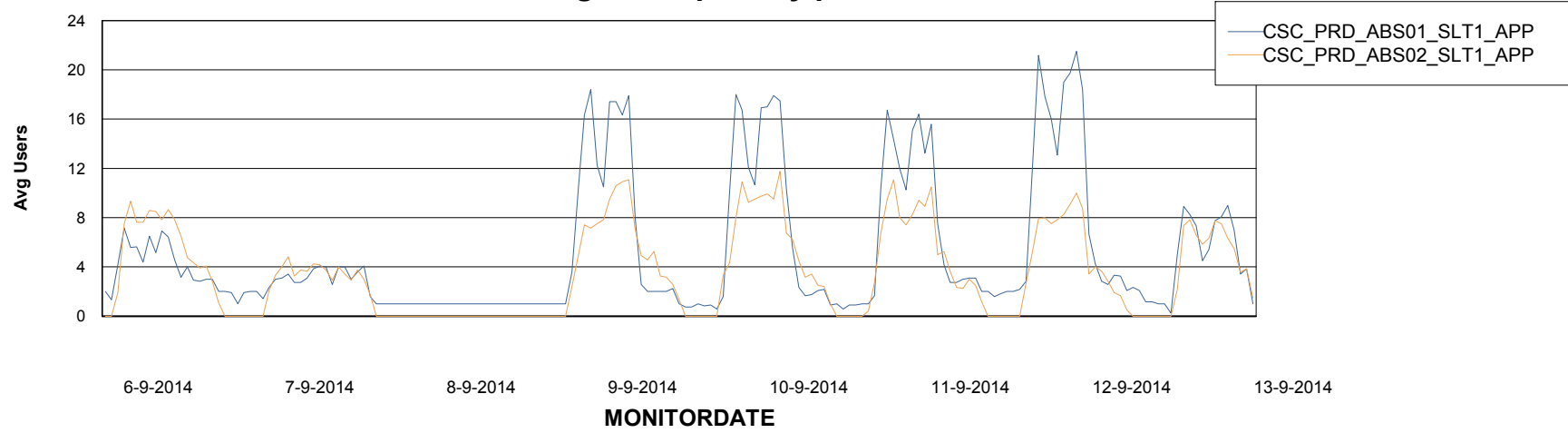
# Weekly SLA Customer Report

Customer CSC\_Production  
Database ID 50



=====  
ABSolute Application Server Services  
=====

### Avg users per day per ABS server



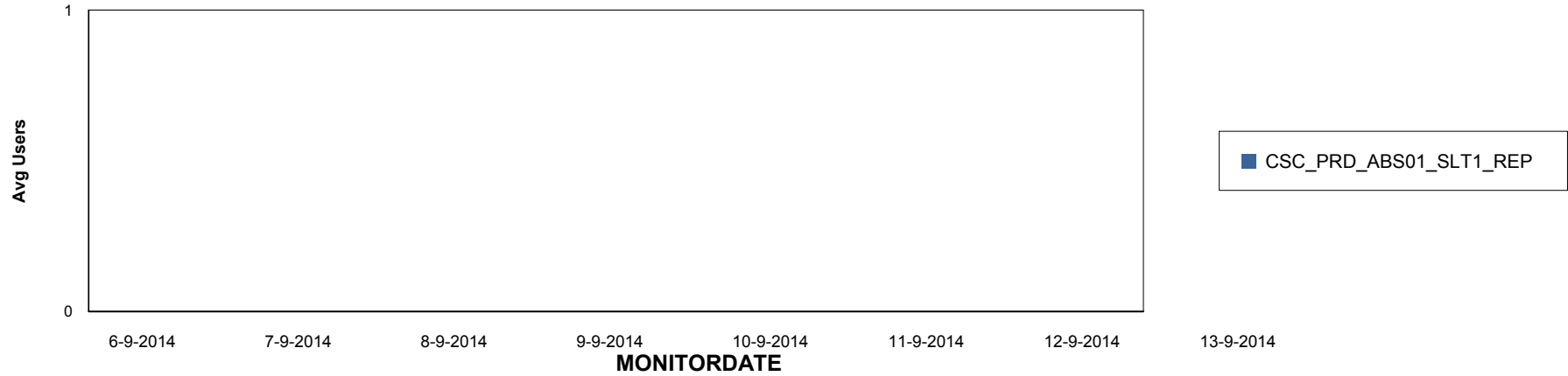
# Weekly SLA Customer Report

Customer CSC\_Production  
Database ID 50

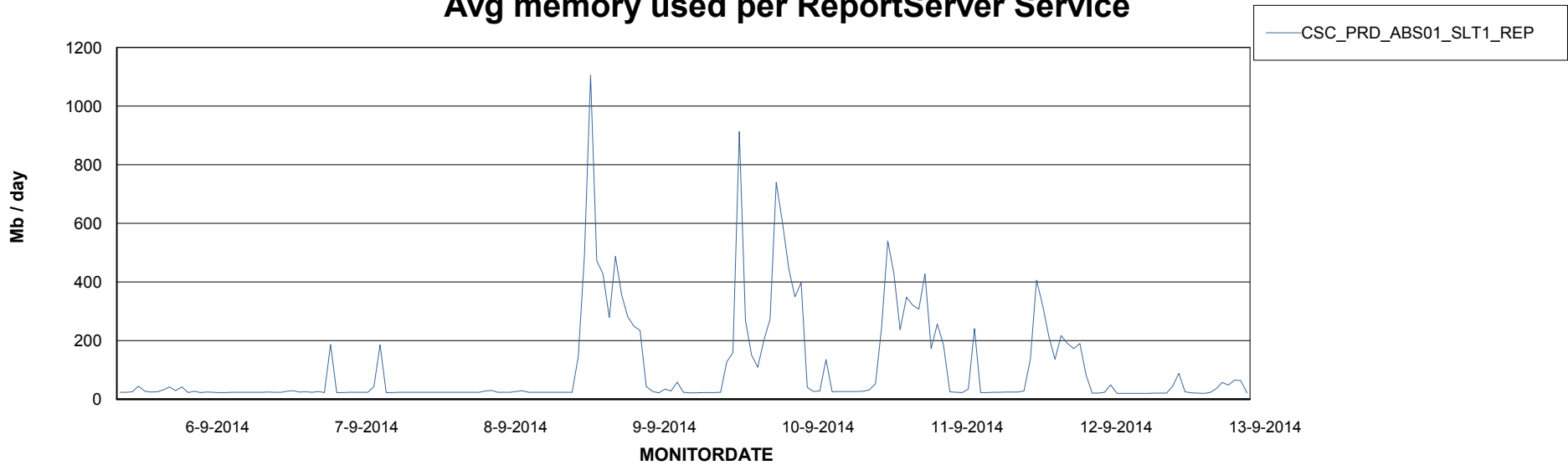


=====  
ABSolute Application ReportServer Services  
=====

## Disaster per ReportServer



## Avg memory used per ReportServer Service



# Weekly SLA Customer Report

Customer CSC\_Production  
Database ID 50



## Disaster per ABS component

