

# Weekly SLA Customer Report

Customer AUJ\_Production  
Database ID 41



=====  
HARDDISK USAGE AUJDB\_BI  
=====

	Used disk space on / (GB)	Total disk space on / (GB)
13-9-2014	5	6
12-9-2014	5	6
11-9-2014	5	6
10-9-2014	5	6
9-9-2014	5	6
8-9-2014	5	6
7-9-2014	5	6

=====  
HARDDISK USAGE AUJ\_PRD\_ORACLE1  
=====

	Used disk space on \$1 (GB)	Total disk space on \$1 (GB)	Free disk space on \$1 (GB)
13-9-2014	114	290	67
12-9-2014	114	290	67
11-9-2014	114	290	67
10-9-2014	114	290	67
9-9-2014	114	290	67
8-9-2014	114	290	67
7-9-2014	114	290	67

# Weekly SLA Customer Report

Customer AUJ\_Production  
Database ID 41



HARDDISK USAGE AUJ\_PRD\_ORACLE2

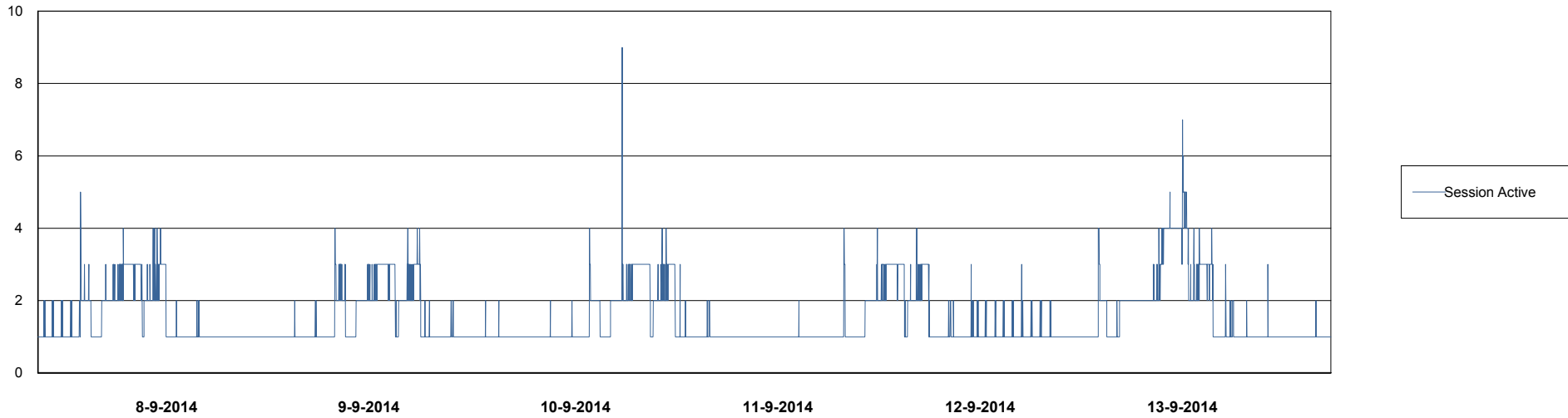
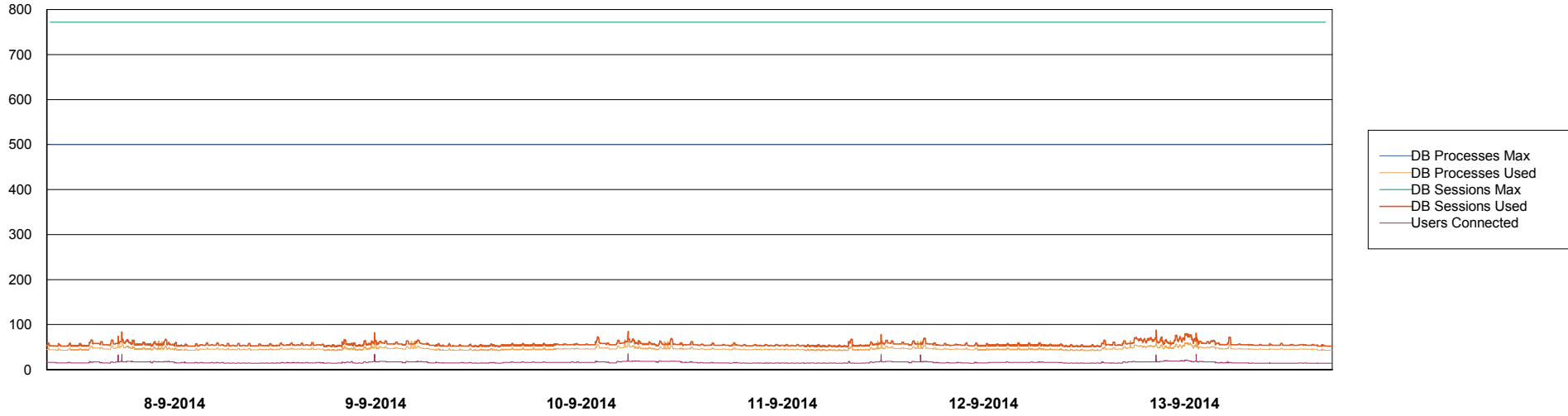
	Used disk space on \$1 (GB)	Total disk space on \$1 (GB)	Free disk space on \$1 (GB)
13-9-2014	6	109	98
12-9-2014	6	109	98
11-9-2014	6	109	98
10-9-2014	6	109	98
9-9-2014	6	109	98
8-9-2014	6	109	98
7-9-2014	6	109	98

# Weekly SLA Customer Report

Customer AUJ\_Production  
Database ID 41



DATABASE PERFORMANCE AUJDB\_BI

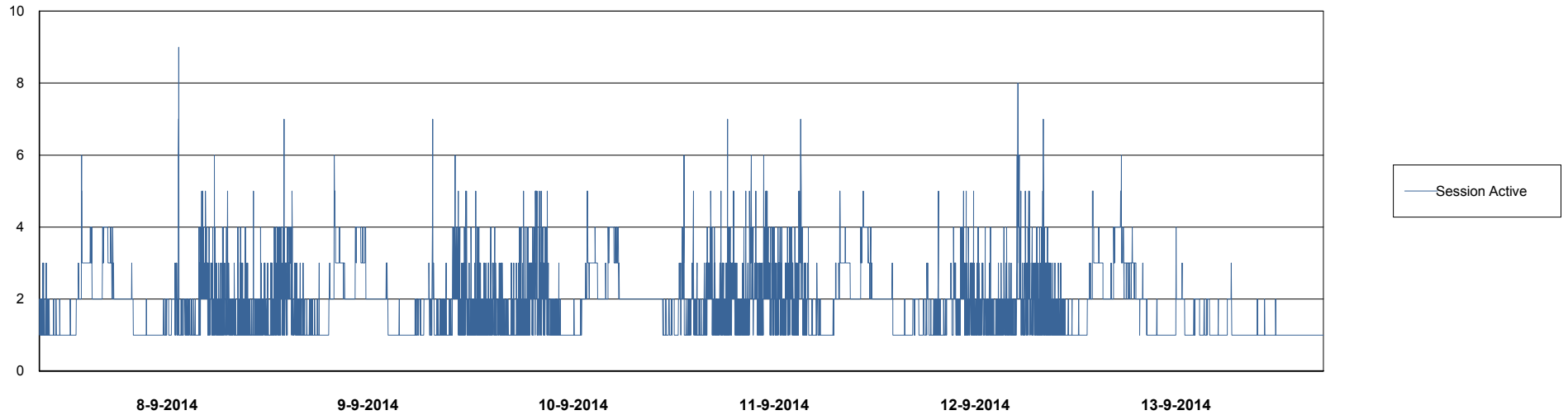
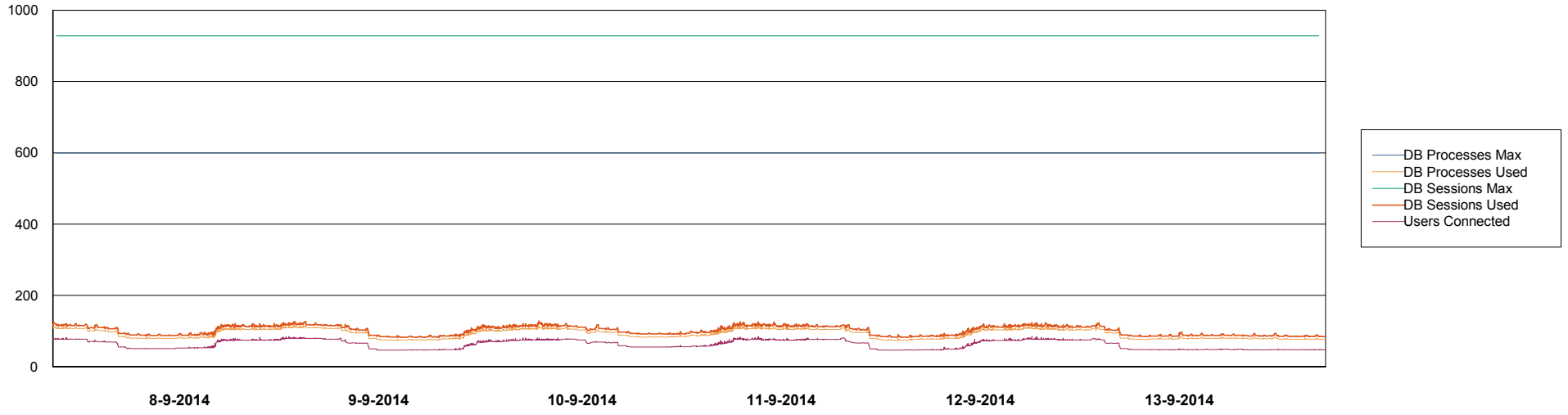


# Weekly SLA Customer Report

Customer AUJ\_Production  
Database ID 41



DATABASE PERFORMANCE AUJDB\_Production



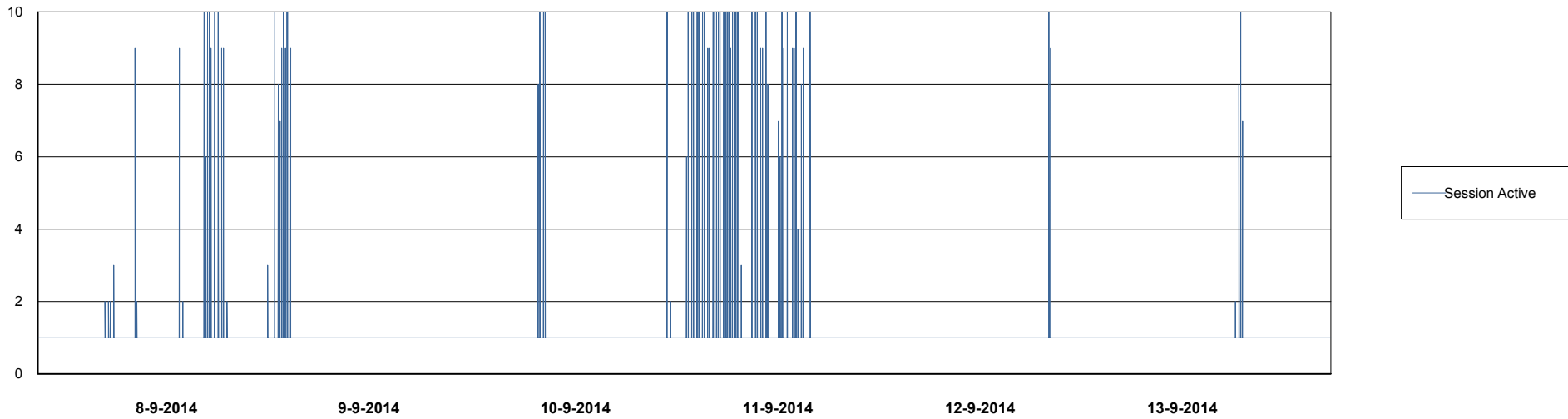
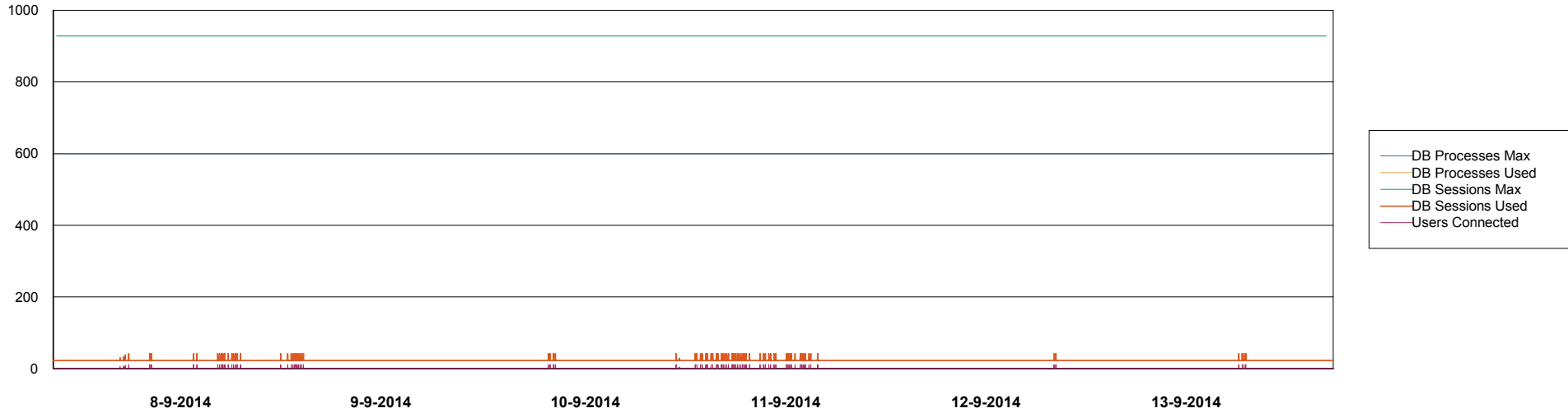
# Weekly SLA Customer Report

Customer AUJ\_Production  
Database ID 41



## DATABASE PERFORMANCE

AUJDB\_Standby

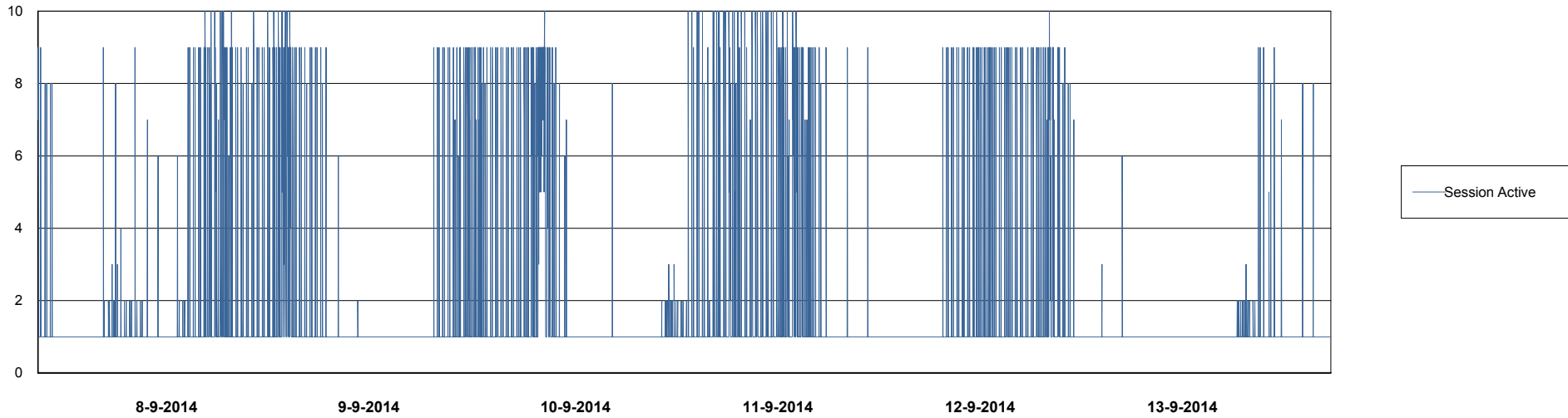
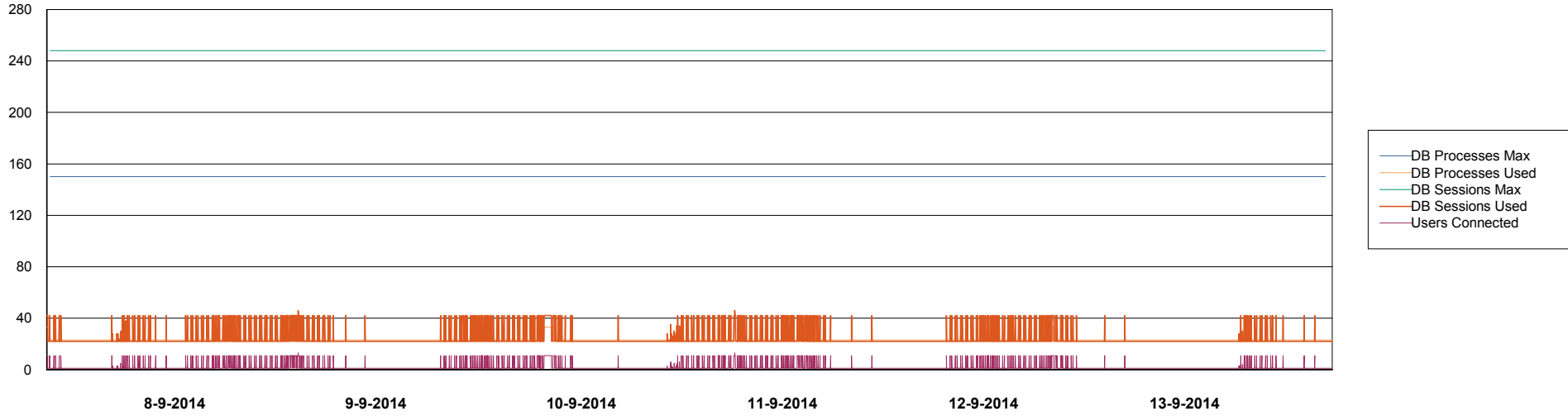


# Weekly SLA Customer Report

Customer AUJ\_Production  
Database ID 41



DATABASE PERFORMANCE AUJDB3\_Standby



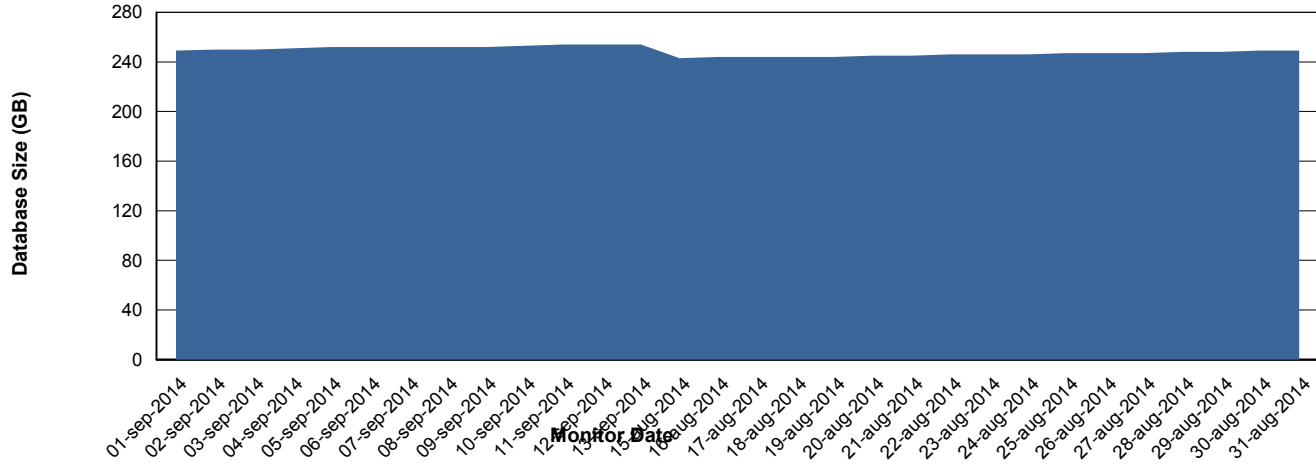
# Weekly SLA Customer Report

Customer AUJ\_Production  
Database ID 41



=====  
DATABASE SIZE AUJDB\_Production  
=====

## Database growth over last month



# Weekly SLA Customer Report

Customer AUJ\_Production  
 Database ID 41



=====  
 DATABASE TABLESPACES AUJDB\_BI  
 =====

TOTAL DATABASE SIZE PER TABLESPACE

Date	Tablespace Name	Filesize (Gb)	Usedsize (Gb)	Percentage free
13-9-2014	ABSDATA	99	82	17
	INDX	164	137	16
12-9-2014	ABSDATA	99	82	17
	INDX	164	137	16
11-9-2014	ABSDATA	99	82	17
	INDX	164	137	16
10-9-2014	ABSDATA	99	82	17
	INDX	164	136	17
9-9-2014	ABSDATA	99	81	18
	INDX	164	136	17
8-9-2014	ABSDATA	99	81	18
	INDX	164	136	17
7-9-2014	ABSDATA	99	81	18
	INDX	164	136	17

# Weekly SLA Customer Report

Customer AUJ\_Production  
 Database ID 41



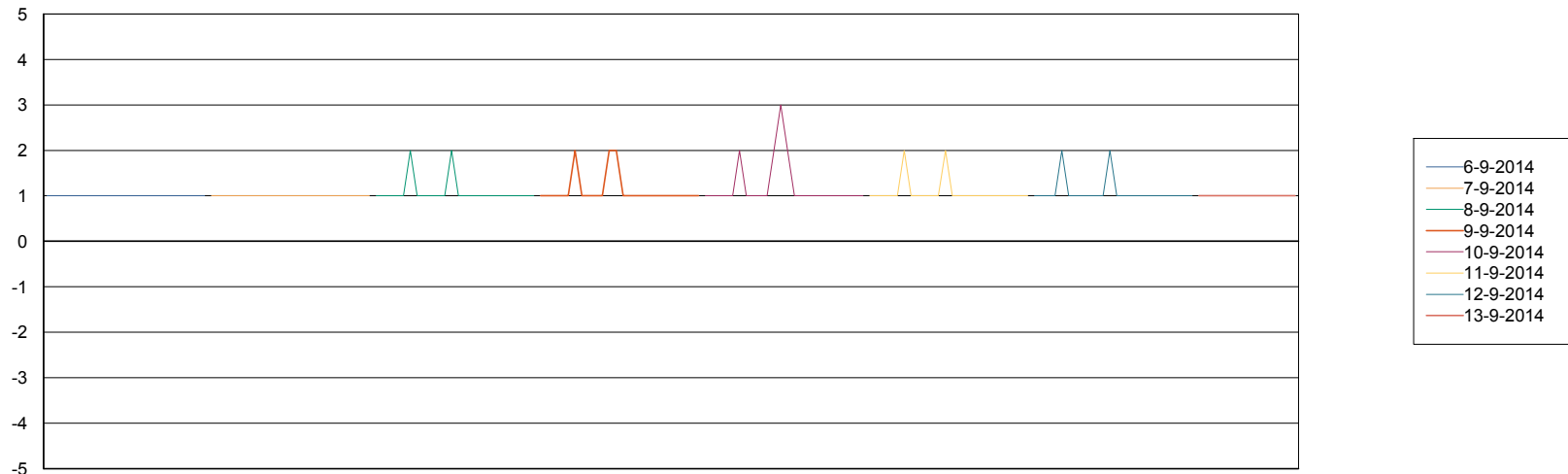
=====  
 DATABASE TABLESPACES AUJDB\_Production  
 =====

TOTAL DATABASE SIZE PER TABLESPACE

Date	Tablespace Name	Filesize (Gb)	Usedsize (Gb)	Percentage free
13-9-2014	ABSDATA	139	111	20
	INDX	177	142	20
12-9-2014	ABSDATA	139	111	20
	INDX	177	142	20
11-9-2014	ABSDATA	139	110	21
	INDX	177	142	20
10-9-2014	ABSDATA	139	110	21
	INDX	177	142	20
9-9-2014	ABSDATA	139	110	21
	INDX	177	141	20
8-9-2014	ABSDATA	139	110	21
	INDX	177	141	20
7-9-2014	ABSDATA	139	110	21
	INDX	177	140	21

=====  
 STANDBY DATABASE HEALTH AUJ\_Production  
 =====

Recovery lag for last 7 days



# Weekly SLA Customer Report

---

Customer AUJ\_Production  
Database ID 41

