

Weekly SLA Customer Report

Customer RFL_Production
Database ID 36



=====
HARDDISK USAGE RFL_PRD_ORACLE1
=====

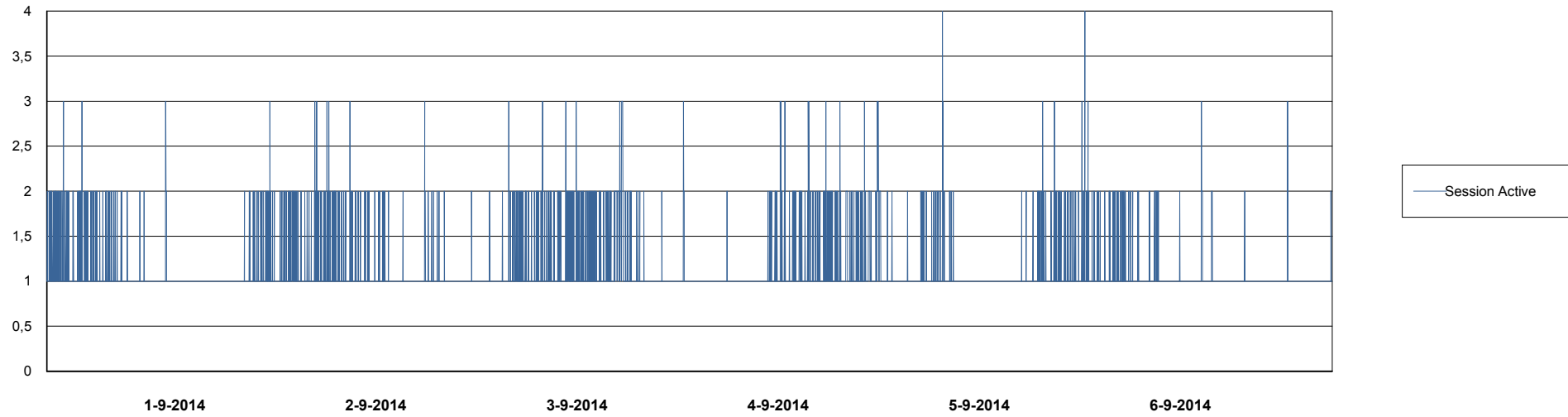
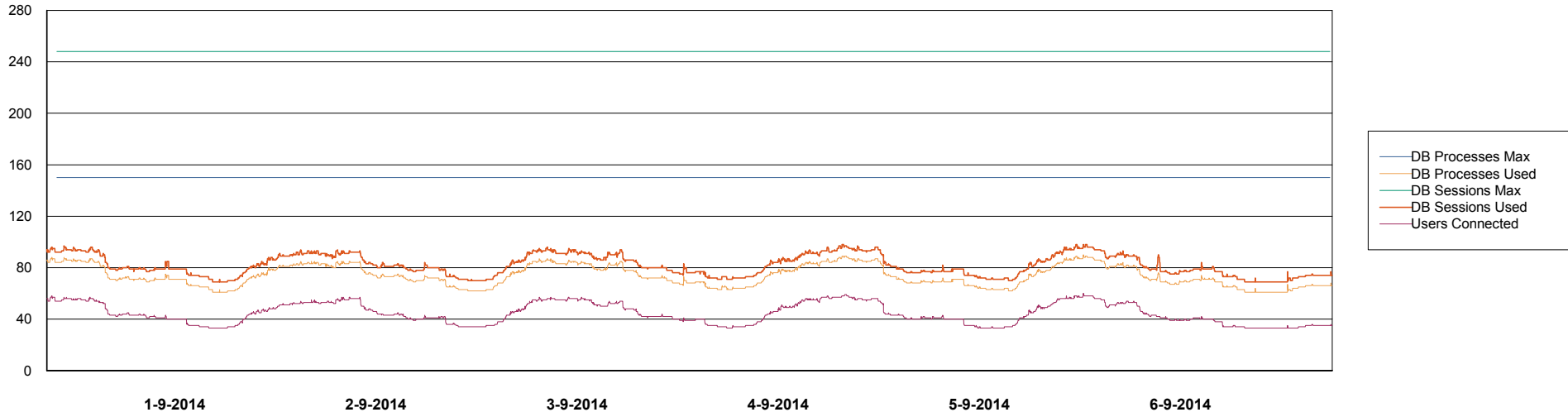
	Total disk space on C (GB)	Free disk space on C (GB)	Total disk space on D (GB)	Free disk space on D (GB)	Total disk space on E (GB)	Free disk space on E (GB)
6-9-2014	279	83	137	101	137	89
5-9-2014	279	83	137	101	137	90
4-9-2014	279	83	137	101	137	90
3-9-2014	279	83	137	101	137	91
2-9-2014	279	83	137	101	137	92
1-9-2014	279	83	137	101	137	92
31-8-2014	279	83	137	101	137	93

Weekly SLA Customer Report

Customer RFL_Production
Database ID 36



DATABASE PERFORMANCE RFLDB_Production

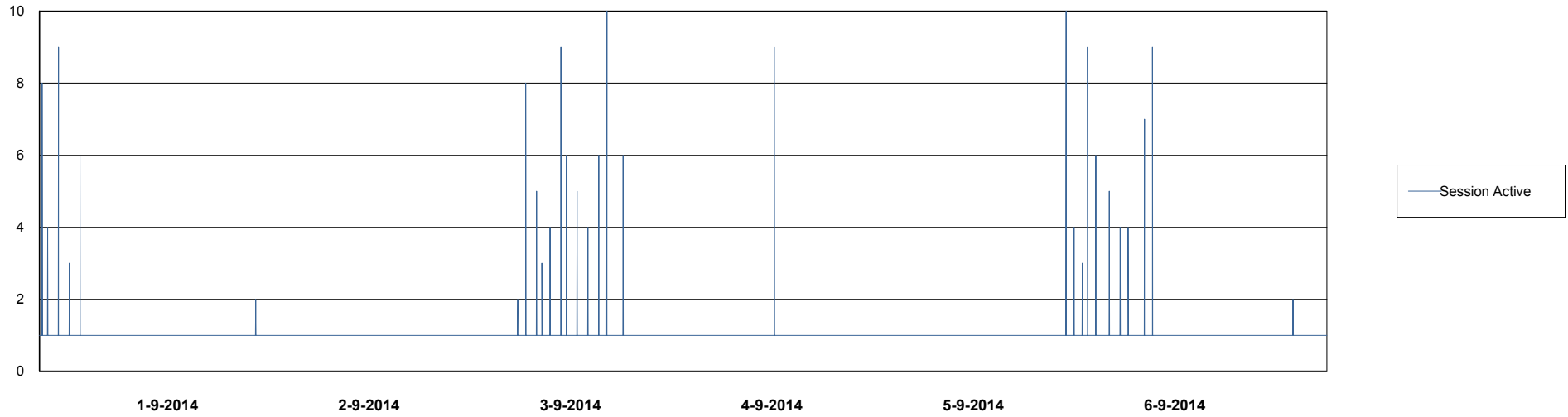
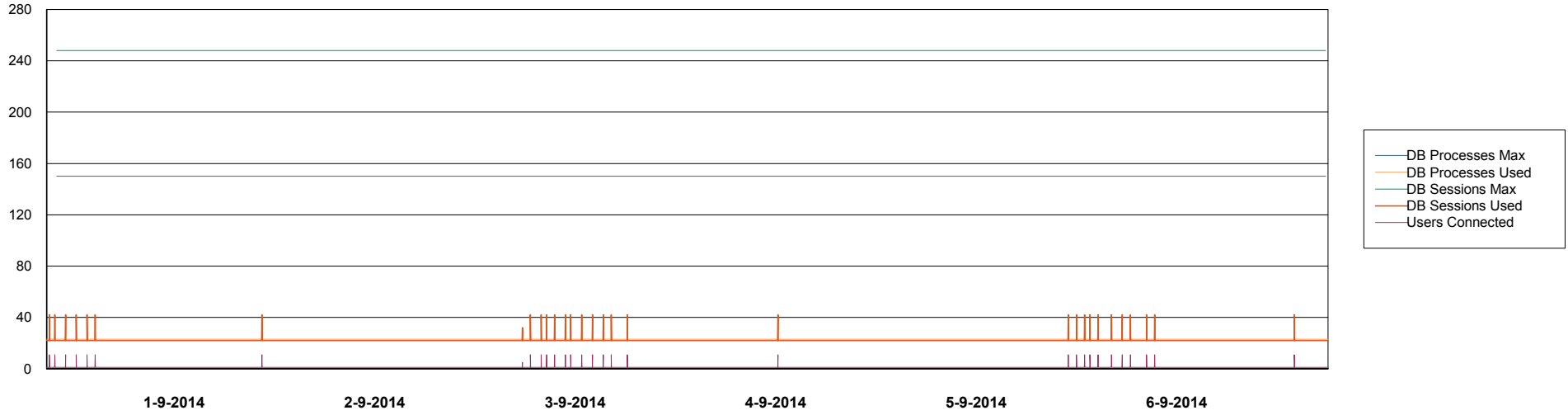


Weekly SLA Customer Report

Customer RFL_Production
Database ID 36



=====
DATABASE PERFORMANCE RFLDB_Standby
=====



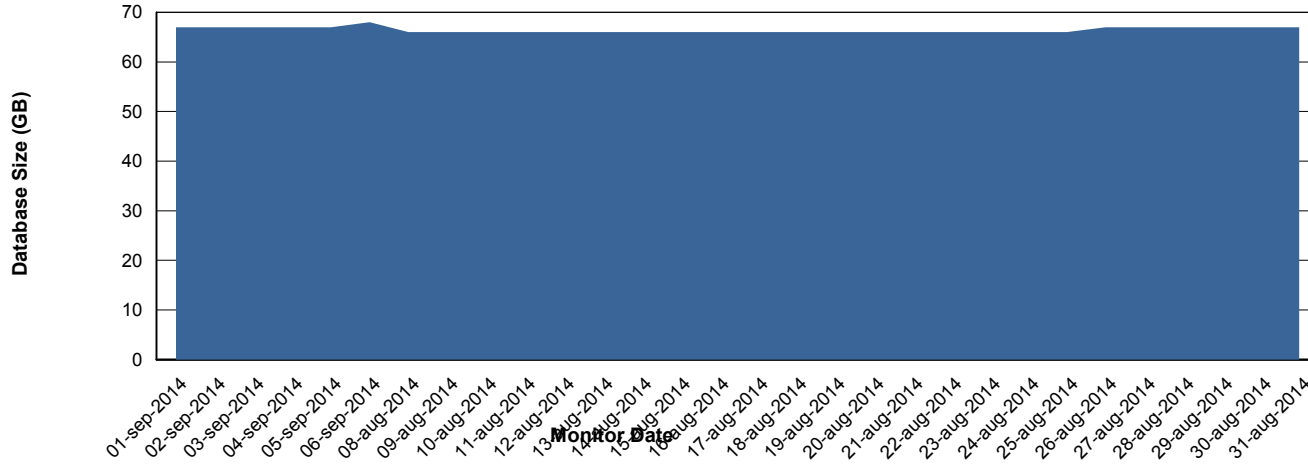
Weekly SLA Customer Report

Customer RFL_Production
 Database ID 36



=====
 DATABASE SIZE RFLDB_Production
 =====

Database growth over last month



=====
 DATABASE TABLESPACES RFLDB_Production
 =====

TOTAL DATABASE SIZE PER TABLESPACE

Date	Tablespace Name	Filesize (Gb)	Usedsize (Gb)	Percentage free
6-9-2014	ABSDATA	20	17	15
	INDX	58	50	14
5-9-2014	ABSDATA	20	17	15
	INDX	58	50	14
4-9-2014	ABSDATA	20	17	15
	INDX	58	49	16
3-9-2014	ABSDATA	20	17	15
	INDX	58	49	16
2-9-2014	ABSDATA	20	17	15
	INDX	58	49	16
1-9-2014	ABSDATA	20	17	15
	INDX	58	49	16
31-8-2014	ABSDATA	20	17	15
	INDX	58	49	16

Weekly SLA Customer Report

Customer RFL_Production
Database ID 36



=====
STANDBY DATABASE HEALTH RFL_Production
=====

Recovery lag for last 7 days

