

Weekly SLA Customer Report

Customer NIX_Production
Database ID 51



=====
HARDDISK USAGE NIX_PRD_ABSAPP1
=====

	Total disk space on C (GB)	Free disk space on C (GB)
6-9-2014	136	86
5-9-2014	136	86
4-9-2014	136	86
3-9-2014	136	87
2-9-2014	136	87
1-9-2014	136	87
31-8-2014	136	87

=====
HARDDISK USAGE NIX_PRD_ABSWEB1
=====

	Total disk space on C (GB)	Free disk space on C (GB)
6-9-2014	930	738
5-9-2014	930	738
4-9-2014	930	738
3-9-2014	930	738
2-9-2014	930	739
1-9-2014	930	740
31-8-2014	930	740

Weekly SLA Customer Report

Customer NIX_Production
 Database ID 51



=====
 HARDDISK USAGE NIX_PRD_ORACLE_B11
 =====

	Total disk space on C (GB)	Free disk space on C (GB)	Total disk space on D (GB)	Free disk space on D (GB)	Total disk space on E (GB)	Free disk space on E (GB)
6-9-2014	40	7	279	180	236	170
5-9-2014	40	7	279	180	236	170
4-9-2014	40	7	279	180	236	170
3-9-2014	40	7	279	178	236	165
2-9-2014	40	7	279	180	236	170
1-9-2014	40	7	279	180	236	170
31-8-2014	40	7	279	180	236	170

=====
 HARDDISK USAGE NIX_PRD_ORCDB1
 =====

	Total disk space on C (GB)	Free disk space on C (GB)	Total disk space on D (GB)	Free disk space on D (GB)	Total disk space on E (GB)	Free disk space on E (GB)
6-9-2014	136	21	136	35	136	100
5-9-2014	136	21	136	35	136	102
4-9-2014	136	21	136	35	136	102
3-9-2014	136	21	136	35	136	102
2-9-2014	136	21	136	35	136	102
1-9-2014	136	21	136	35	136	102
31-8-2014	136	21	136	35	136	101

Weekly SLA Customer Report

Customer NIX_Production
 Database ID 51



=====

HARDDISK USAGE NIX_PRD_ORCDB2

=====

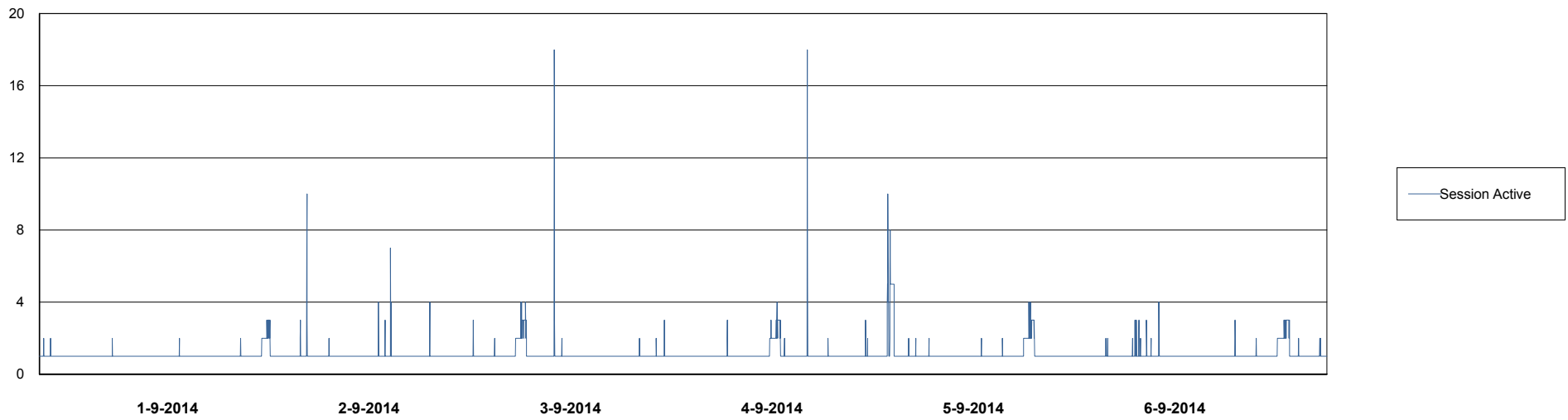
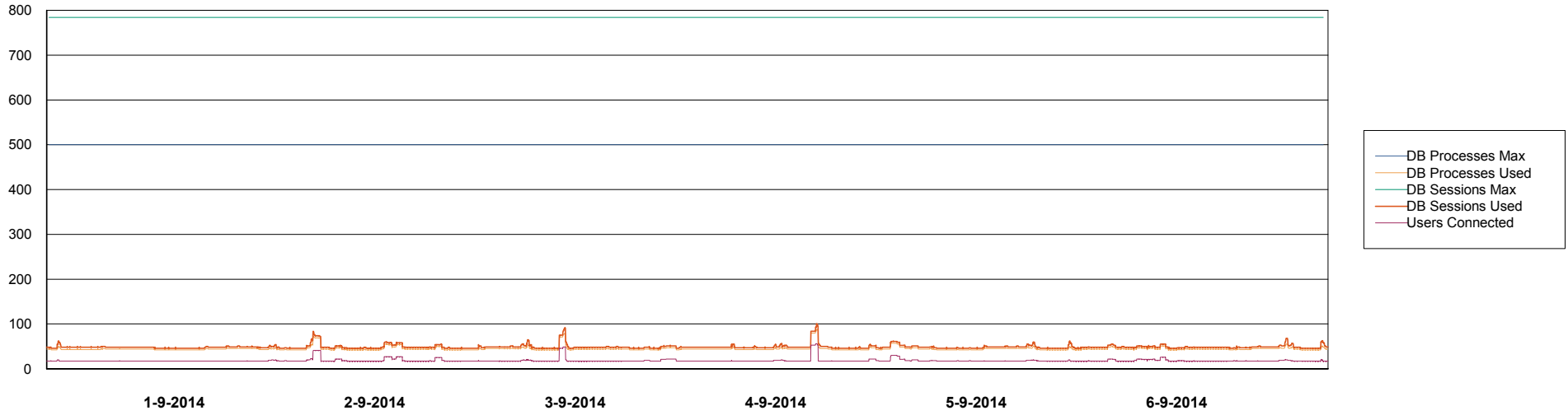
	Total disk space on C (GB)	Free disk space on C (GB)	Total disk space on D (GB)	Free disk space on D (GB)	Total disk space on E (GB)	Free disk space on E (GB)
6-9-2014	279	49	279	49	279	160
5-9-2014	279	49	279	49	279	180
4-9-2014	279	49	279	49	279	179
3-9-2014	279	49	279	49	279	150
2-9-2014	279	49	279	49	279	101
1-9-2014	279	49	279	49	279	86
31-8-2014	279	49	279	49	279	119

Weekly SLA Customer Report

Customer NIX_Production
Database ID 51



DATABASE PERFORMANCE NIXDB_BI

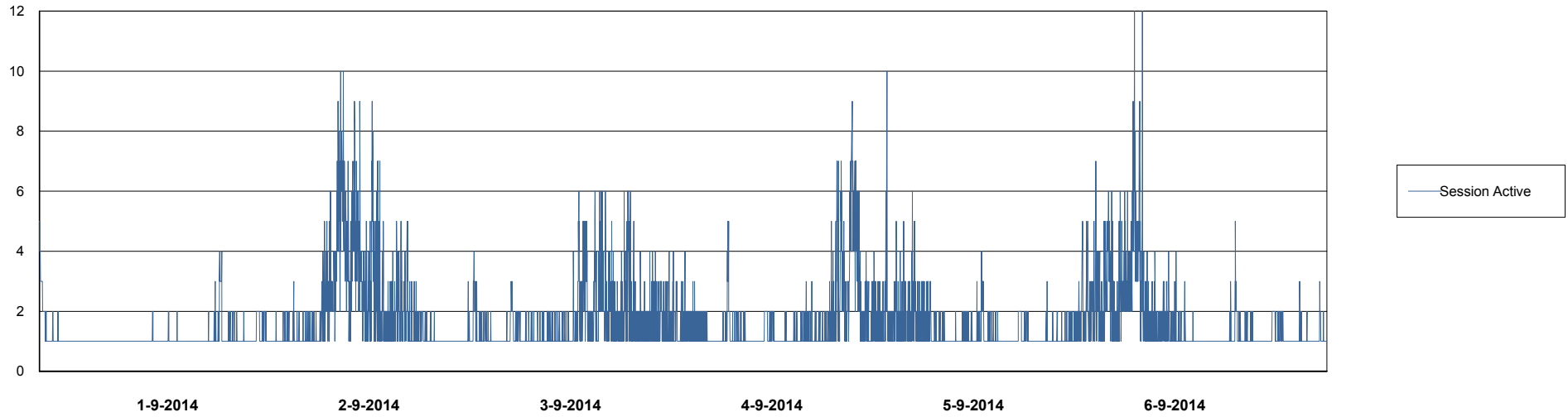
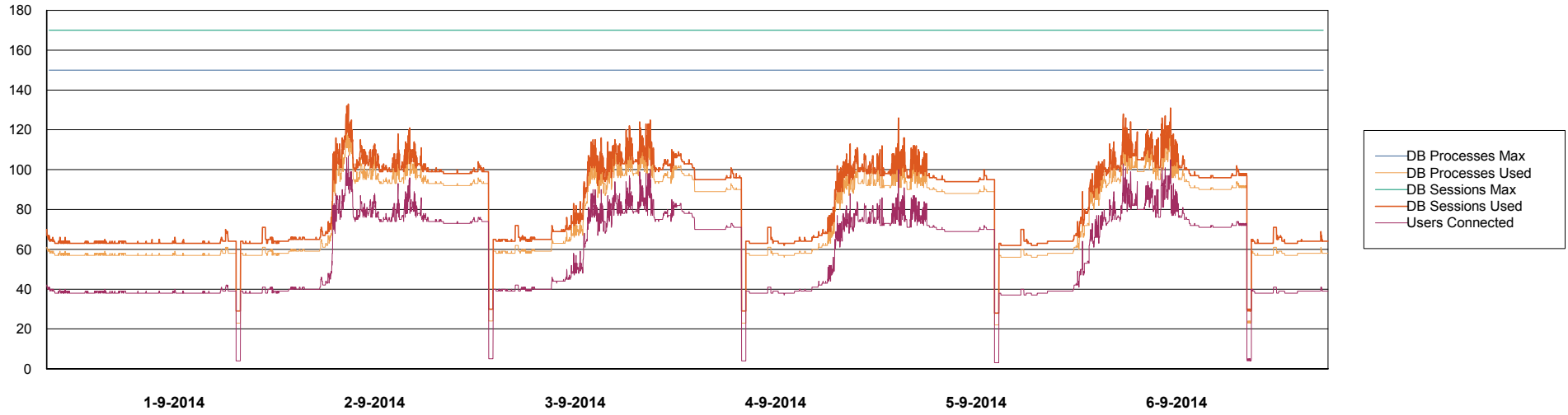


Weekly SLA Customer Report

Customer NIX_Production
Database ID 51



DATABASE PERFORMANCE NIXDB_Production

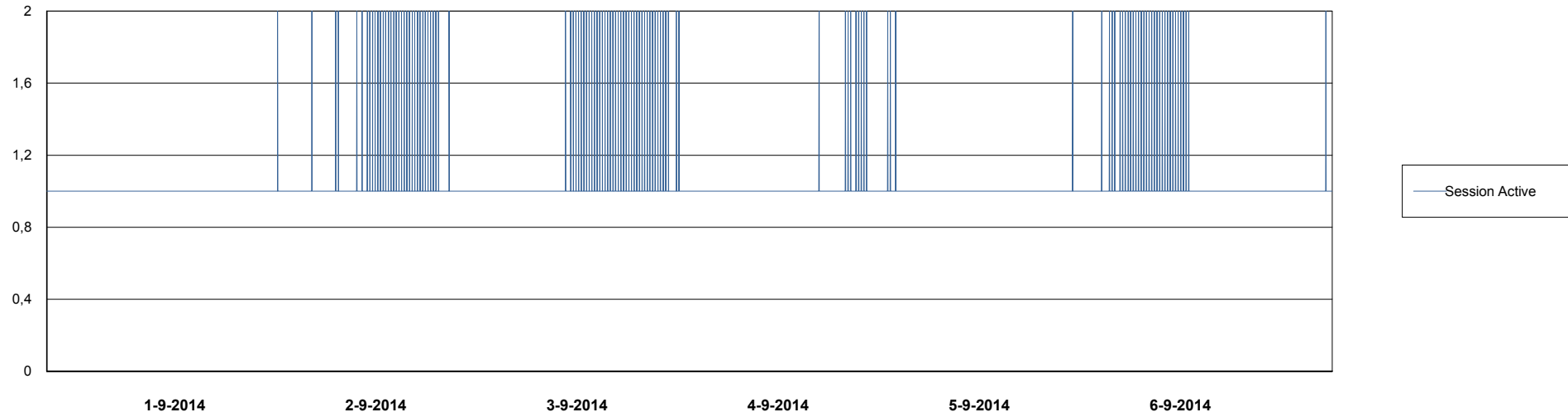
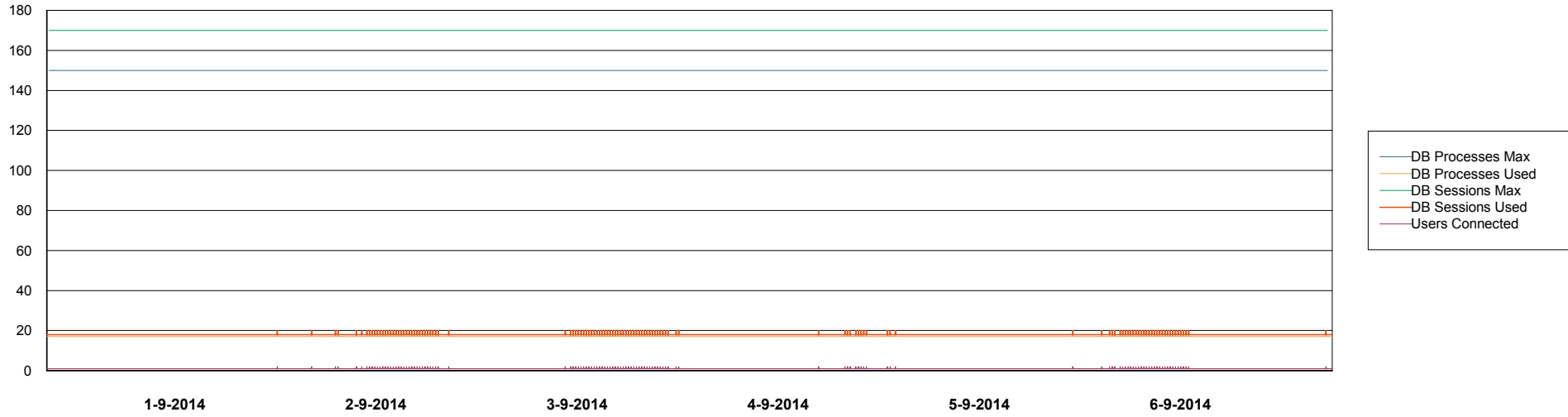


Weekly SLA Customer Report

Customer NIX_Production
Database ID 51



DATABASE PERFORMANCE NIXDB_Standby



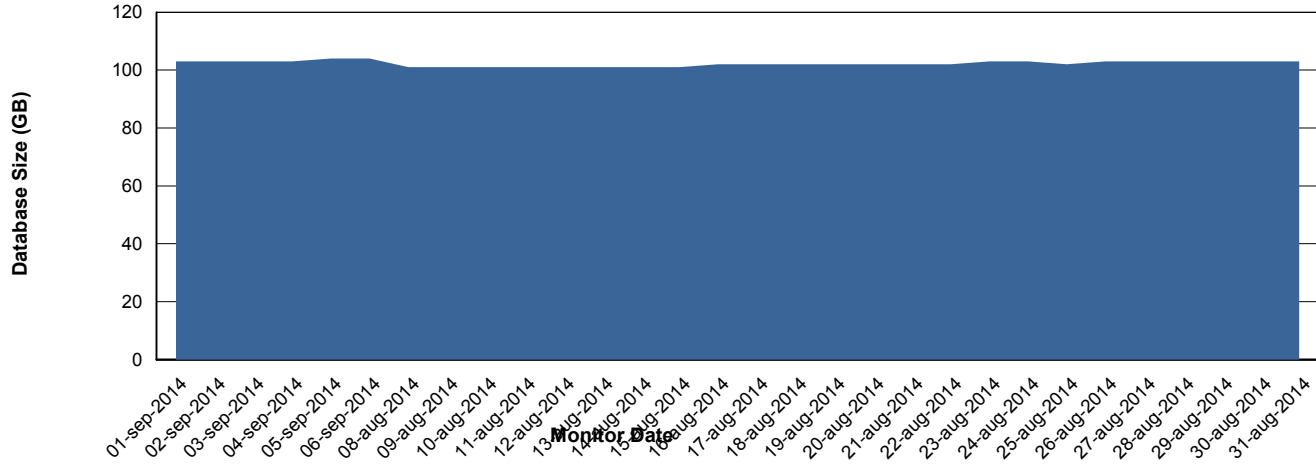
Weekly SLA Customer Report

Customer NIX_Production
Database ID 51



=====
DATABASE SIZE NIXDB_Production
=====

Database growth over last month



Weekly SLA Customer Report

Customer NIX_Production
 Database ID 51



=====
 DATABASE TABLESPACES NIXDB_BI
 =====

TOTAL DATABASE SIZE PER TABLESPACE

Date	Tablespace Name	Filesize (Gb)	Usedsize (Gb)	Percentage free
6-9-2014	ABSDATA	20	17	15
	INDX	40	26	35
5-9-2014	ABSDATA	20	17	15
	INDX	40	26	35
4-9-2014	ABSDATA	20	17	15
	INDX	40	26	35
3-9-2014	ABSDATA	20	17	15
	INDX	40	26	35
2-9-2014	ABSDATA	20	17	15
	INDX	40	26	35
1-9-2014	ABSDATA	20	17	15
	INDX	40	26	35
31-8-2014	ABSDATA	20	17	15
	INDX	40	26	35

Weekly SLA Customer Report

Customer NIX_Production
 Database ID 51



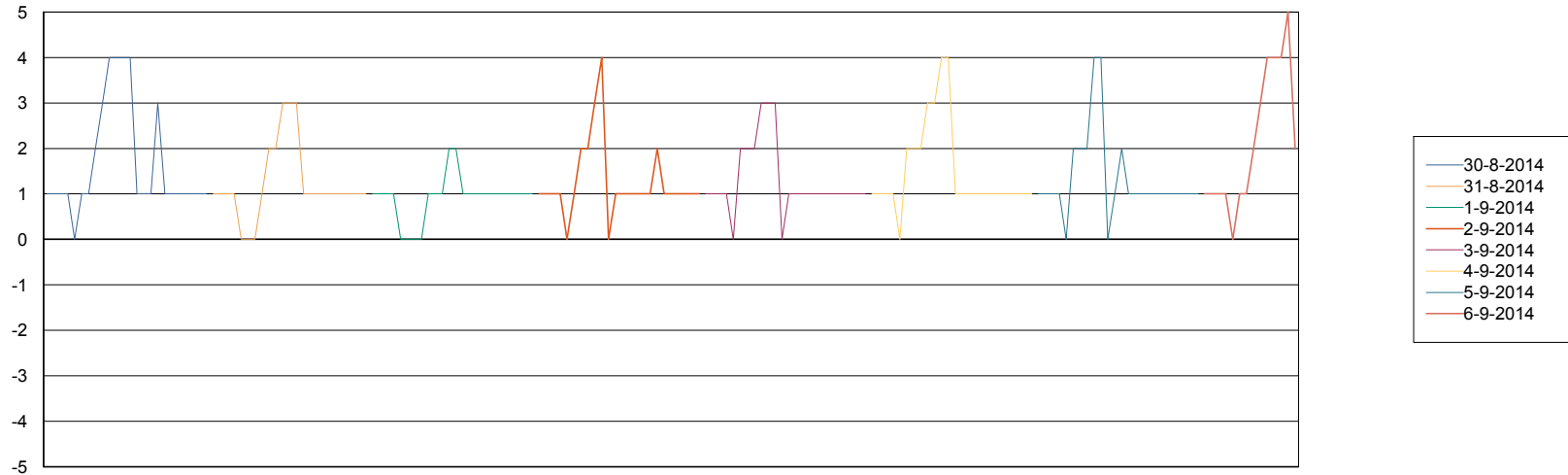
=====
 DATABASE TABLESPACES NIXDB_Production
 =====

TOTAL DATABASE SIZE PER TABLESPACE

Date	Tablespace Name	Filesize (Gb)	Usedsize (Gb)	Percentage free
6-9-2014	ABSDATA	40	27	33
	INDX	97	74	24
5-9-2014	ABSDATA	40	27	33
	INDX	97	74	24
4-9-2014	ABSDATA	40	27	33
	INDX	97	74	24
3-9-2014	ABSDATA	40	27	33
	INDX	97	74	24
2-9-2014	ABSDATA	40	27	33
	INDX	97	73	25
1-9-2014	ABSDATA	40	27	33
	INDX	97	73	25
31-8-2014	ABSDATA	40	27	33
	INDX	97	73	25

=====
 STANDBY DATABASE HEALTH NIX_Production
 =====

Recovery lag for last 7 days



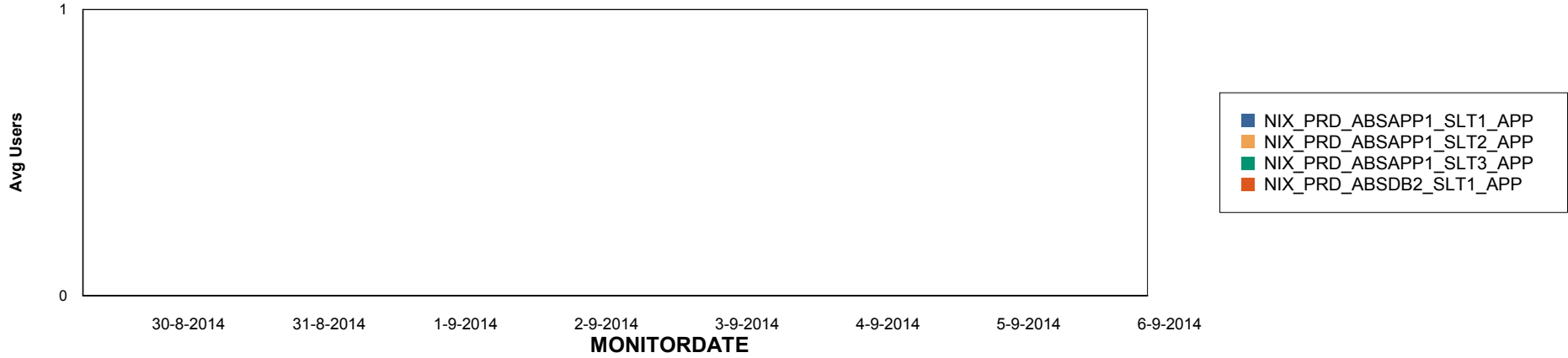
Weekly SLA Customer Report

Customer NIX_Production
Database ID 51

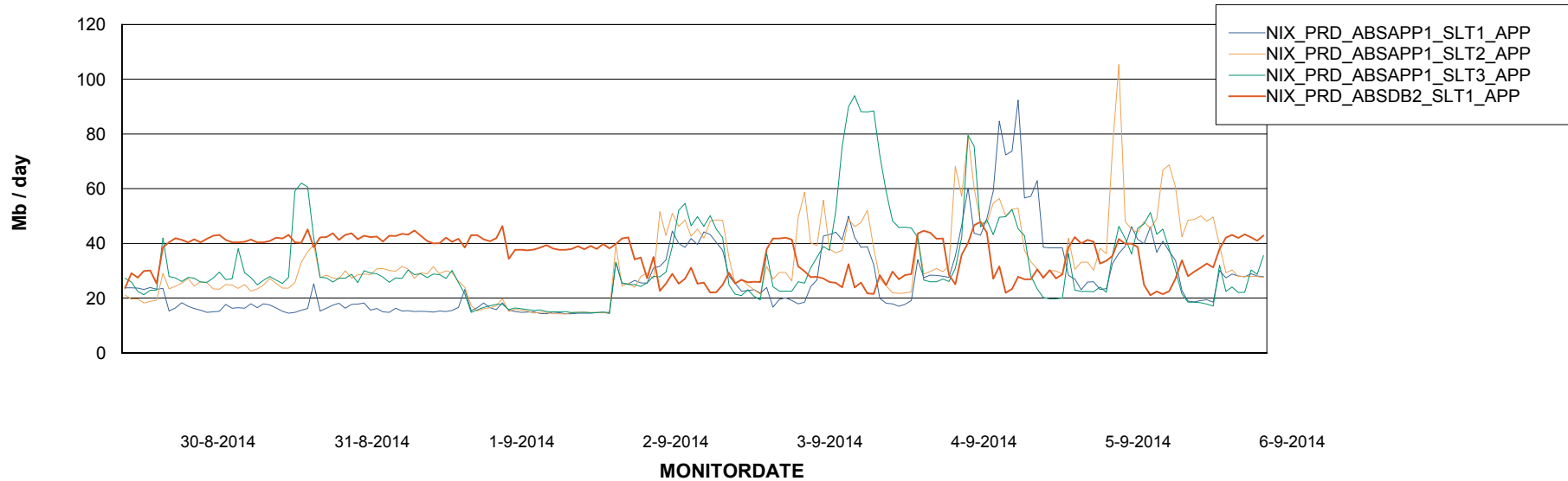


ABSolute Application Server Services

Disaster per ABS Server



Avg memory used per ABS Server Service



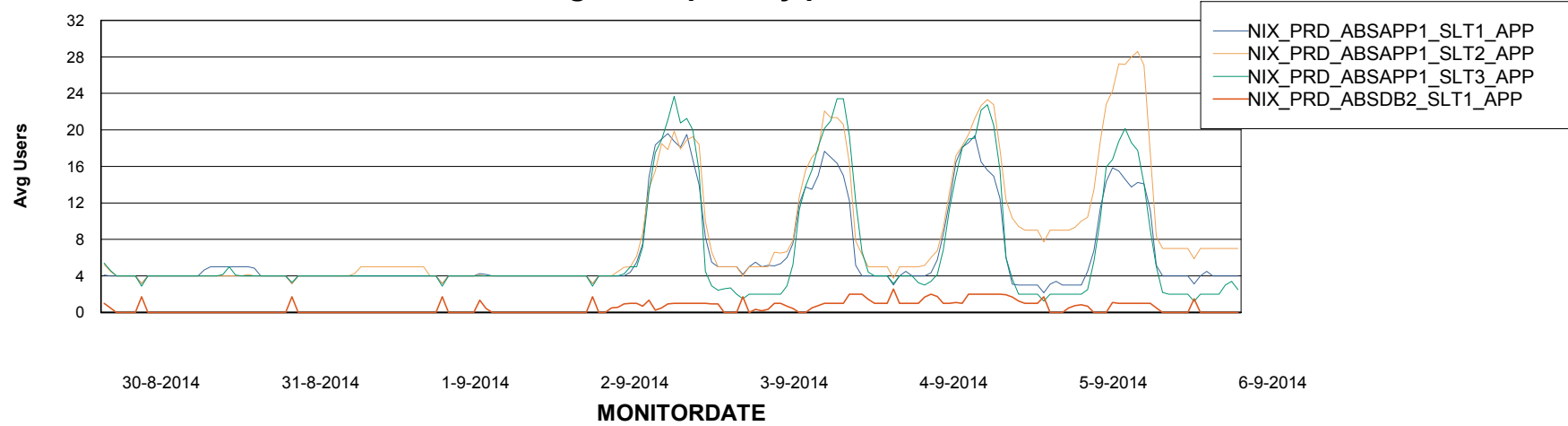
Weekly SLA Customer Report

Customer NIX_Production
Database ID 51



=====
ABSolute Application Server Services
=====

Avg users per day per ABS server



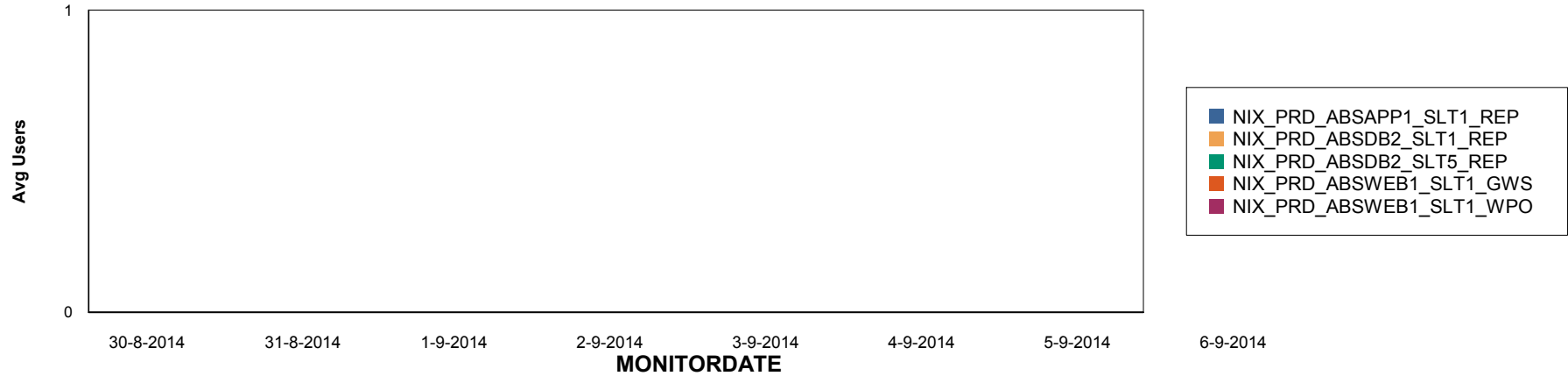
Weekly SLA Customer Report

Customer NIX_Production
Database ID 51

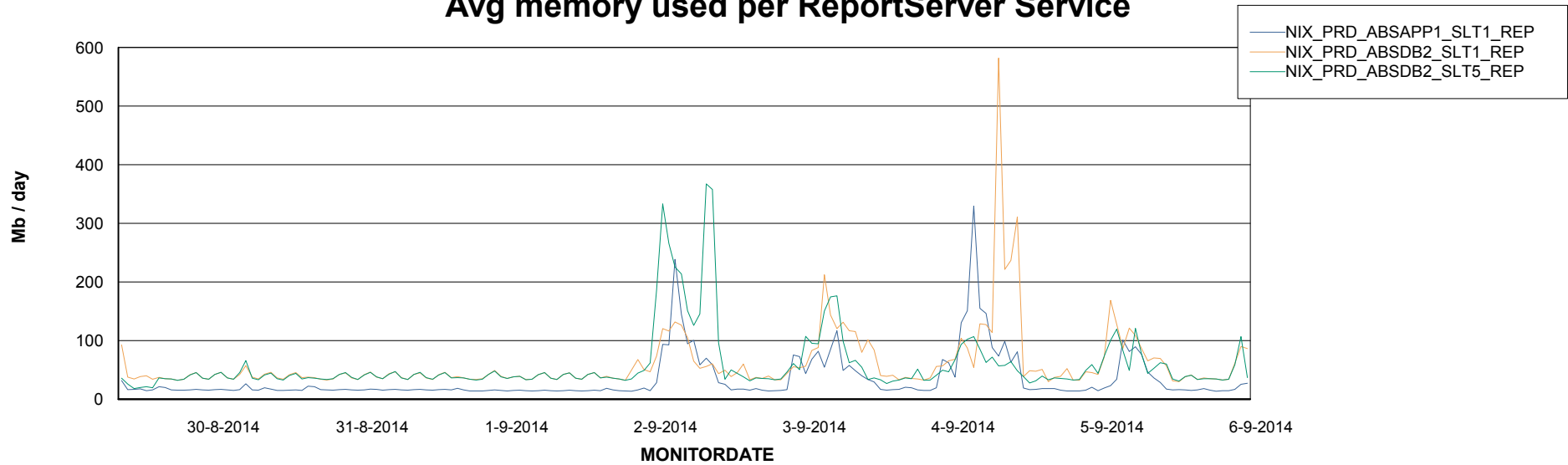


=====
ABSolute Application ReportServer Services
=====

Disaster per ReportServer



Avg memory used per ReportServer Service



Weekly SLA Customer Report

Customer NIX_Production
Database ID 51



Disaster per ABS component

