

Weekly SLA Customer Report

Customer FIS_Production
 Database ID 46



=====
 HARDDISK USAGE FIS_PRD_ORACLE1
 =====

	Total disk space on C (GB)	Free disk space on C (GB)	Total disk space on L (GB)	Free disk space on L (GB)	Total disk space on O (GB)	Free disk space on O (GB)
6-9-2014	279	241	279	126	186	56
5-9-2014	279	241	279	128	186	56
4-9-2014	279	241	279	129	186	56
3-9-2014	279	241	279	130	186	56
2-9-2014	279	241	279	132	186	56
1-9-2014	279	241	279	133	186	58
31-8-2014	279	241	279	135	186	60

=====
 HARDDISK USAGE FIS_PRD_ORACLE2
 =====

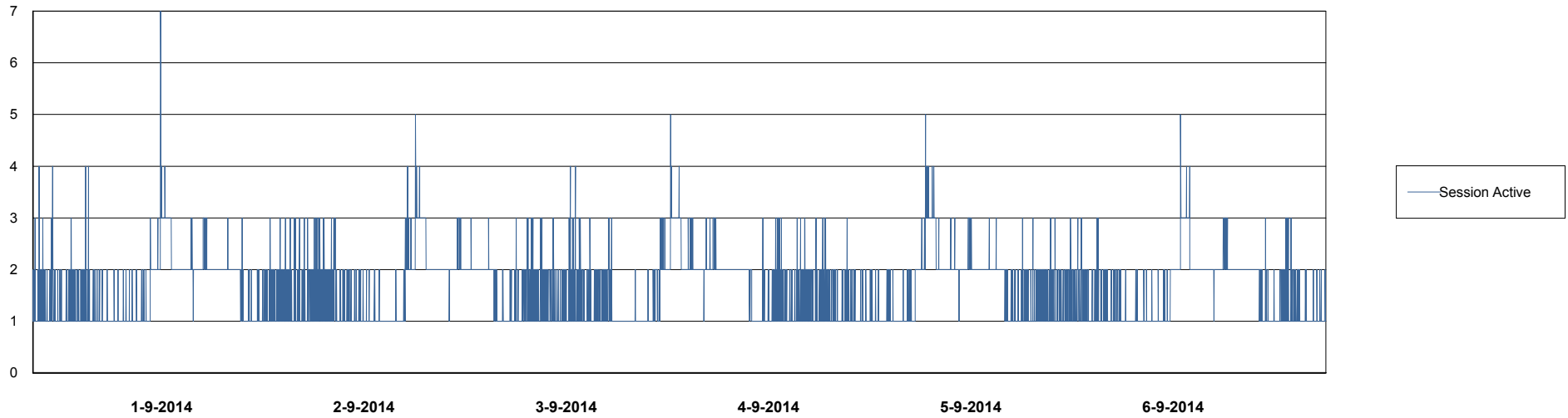
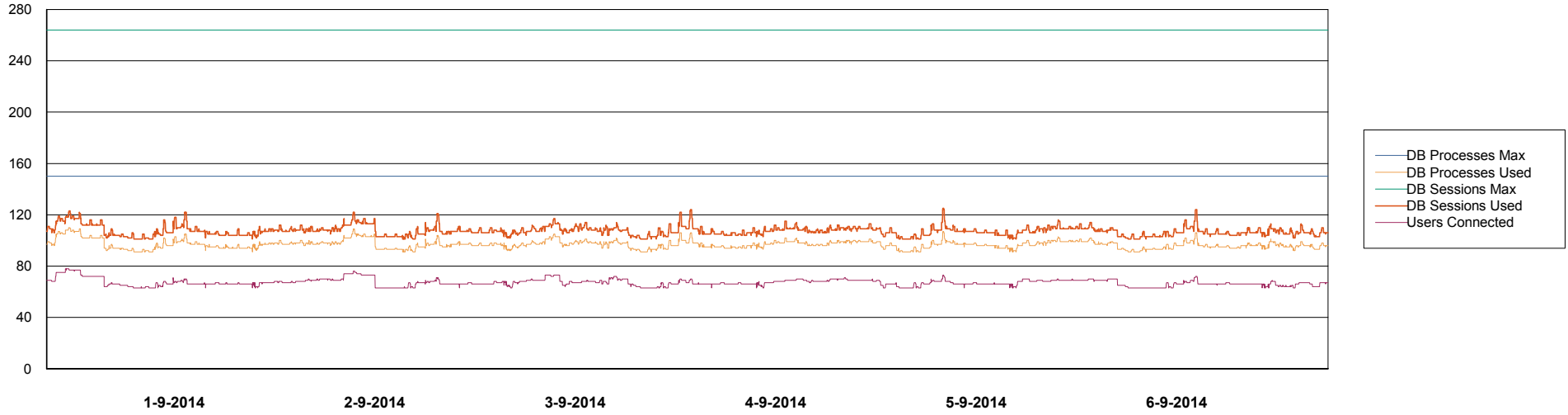
	Total disk space on C (GB)	Free disk space on C (GB)	Total disk space on L (GB)	Free disk space on L (GB)	Total disk space on O (GB)	Free disk space on O (GB)
6-9-2014	279	229	279	78	186	56
5-9-2014	279	229	279	79	186	56
4-9-2014	279	229	279	81	186	56
3-9-2014	279	229	279	82	186	56
2-9-2014	279	229	279	83	186	56
1-9-2014	279	229	279	85	186	58
31-8-2014	279	229	279	86	186	60

Weekly SLA Customer Report

Customer FIS_Production
Database ID 46



DATABASE PERFORMANCE FISDB_Production

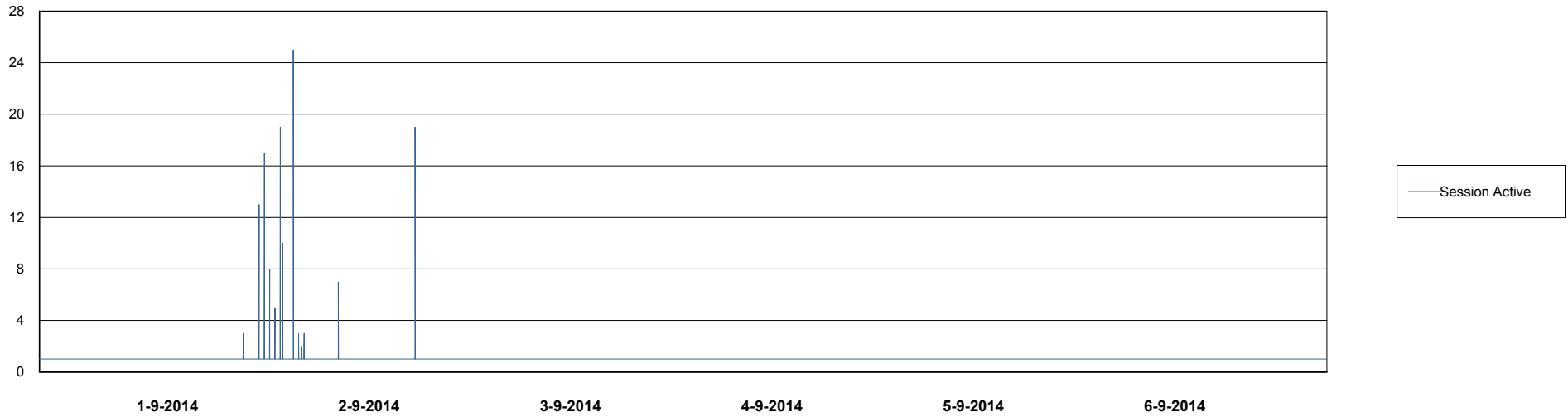
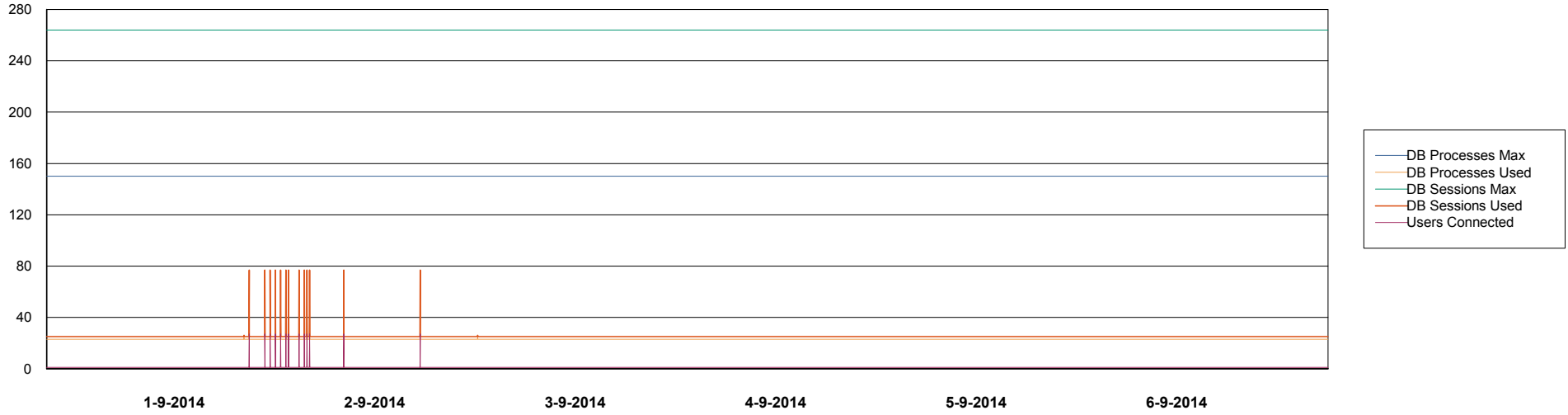


Weekly SLA Customer Report

Customer FIS_Production
Database ID 46



DATABASE PERFORMANCE FISDB_Standby



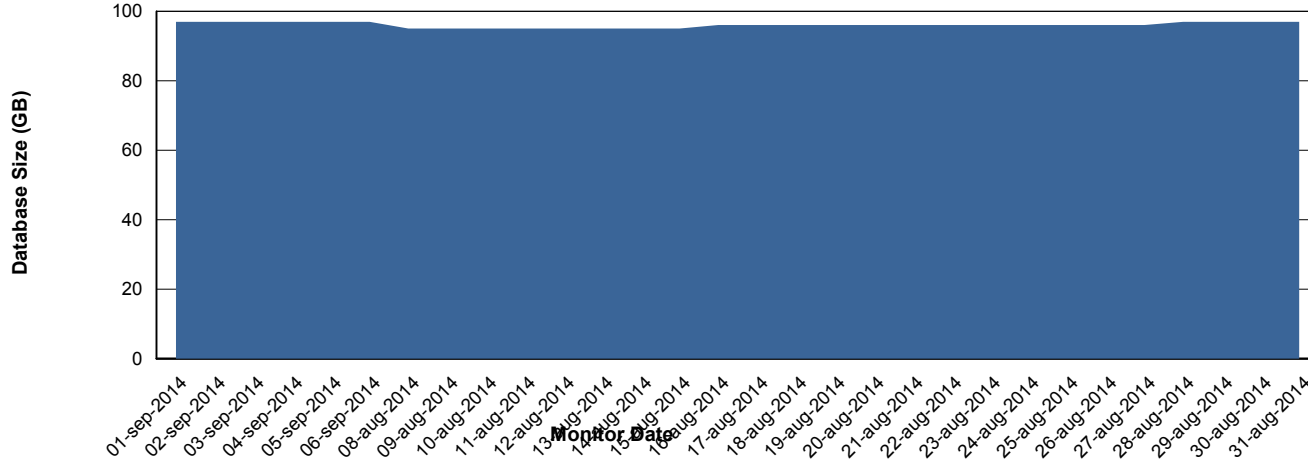
Weekly SLA Customer Report

Customer FIS_Production
 Database ID 46



=====
 DATABASE SIZE FISDB_Production
 =====

Database growth over last month



=====
 DATABASE TABLESPACES FISDB_Production
 =====

TOTAL DATABASE SIZE PER TABLESPACE

Date	Tablespace Name	Filesize (Gb)	Usedsize (Gb)	Percentage free
6-9-2014	ABSDATA	53	41	23
	INDX	63	50	21
5-9-2014	ABSDATA	53	41	23
	INDX	63	50	21
4-9-2014	ABSDATA	53	41	23
	INDX	63	50	21
3-9-2014	ABSDATA	53	41	23
	INDX	63	50	21
2-9-2014	ABSDATA	53	40	25
	INDX	63	50	21
1-9-2014	ABSDATA	53	40	25
	INDX	63	50	21
31-8-2014	ABSDATA	51	40	22
	INDX	61	50	18

Weekly SLA Customer Report

Customer FIS_Production
Database ID 46



=====
STANDBY DATABASE HEALTH FIS_Production
=====

Recovery lag for last 7 days

