

Weekly SLA Customer Report

Customer BCH Production
Database ID 28



=====
HARDDISK USAGE BCH_PRD_ABSAPP1
=====

	Total disk space on C (GB)	Free disk space on C (GB)	Total disk space on D (GB)	Free disk space on D (GB)
6-9-2014	45	9	30	30
5-9-2014	45	9	30	30
4-9-2014	45	9	30	30
3-9-2014	45	9	30	30
2-9-2014	45	9	30	30
1-9-2014	45	9	30	30
31-8-2014	45	9	30	30

=====
HARDDISK USAGE BCH_PRD_ABSAPP2
=====

	Total disk space on C (GB)	Free disk space on C (GB)	Total disk space on D (GB)	Free disk space on D (GB)
6-9-2014	45	9	30	30
5-9-2014	45	9	30	30
4-9-2014	45	9	30	30
3-9-2014	45	9	30	30
2-9-2014	45	9	30	30
1-9-2014	45	9	30	30
31-8-2014	45	9	30	30

Weekly SLA Customer Report

Customer BCH Production
 Database ID 28



=====
 HARDDISK USAGE BCH_PRD_ABSAPP3
 =====

	Total disk space on C (GB)	Free disk space on C (GB)	Total disk space on D (GB)	Free disk space on D (GB)
6-9-2014	45	12	30	30
5-9-2014	45	12	30	30
4-9-2014	45	12	30	30
3-9-2014	45	12	30	30
2-9-2014	45	12	30	30
1-9-2014	45	12	30	30
31-8-2014	45	12	30	30

=====
 HARDDISK USAGE BCH_PRD_ABSWEB1
 =====

	Used disk space on C (GB)	Total disk space on C (GB)	Free disk space on C (GB)
6-9-2014	31	45	14
5-9-2014	31	45	14
4-9-2014	30	45	14
3-9-2014	30	45	14
2-9-2014	30	45	14
1-9-2014	30	45	15
31-8-2014	30	45	15

Weekly SLA Customer Report

Customer BCH Production
 Database ID 28



=====

HARDDISK USAGE BCH_PRD_ABSWEB2

=====

	Used disk space on C (GB)	Total disk space on C (GB)	Free disk space on C (GB)
6-9-2014	29	45	15
5-9-2014	29	45	16
4-9-2014	29	45	16
3-9-2014	29	45	16
2-9-2014	29	45	16
1-9-2014	29	45	16
31-8-2014	29	45	16

=====

HARDDISK USAGE BCH_PRD_ORCDB1

=====

	Total disk space on C (GB)	Free disk space on C (GB)	Total disk space on D (GB)	Free disk space on D (GB)
6-9-2014	278	162	278	84
5-9-2014	278	163	278	87
4-9-2014	278	163	278	90
3-9-2014	278	163	278	63
2-9-2014	278	163	278	47
1-9-2014	278	163	278	49
31-8-2014	278	163	278	51

Weekly SLA Customer Report

Customer BCH Production
 Database ID 28



=====

HARDDISK USAGE BCH_PRD_ORCDB2

=====

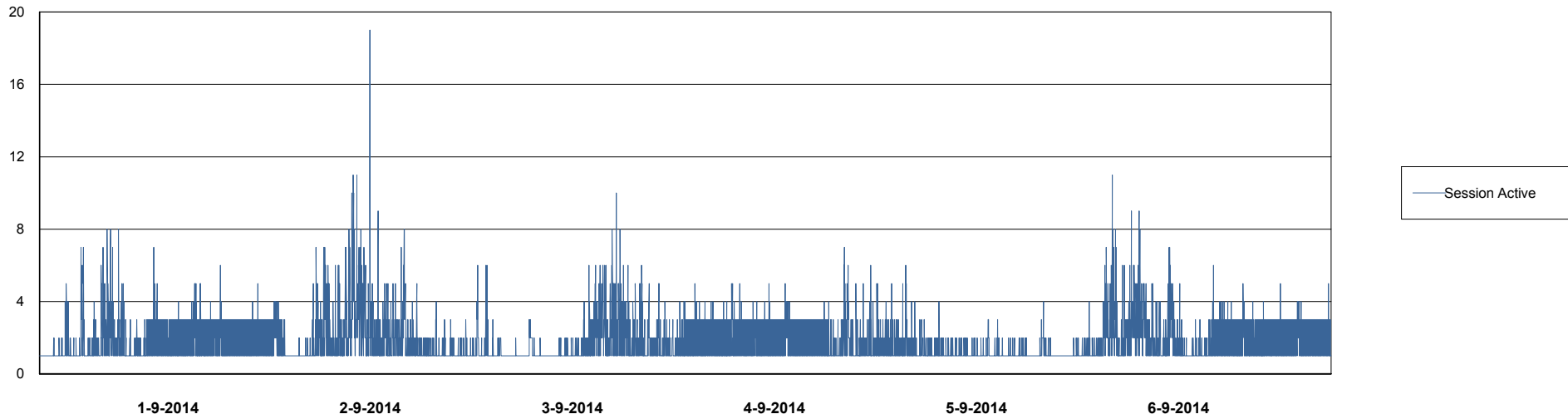
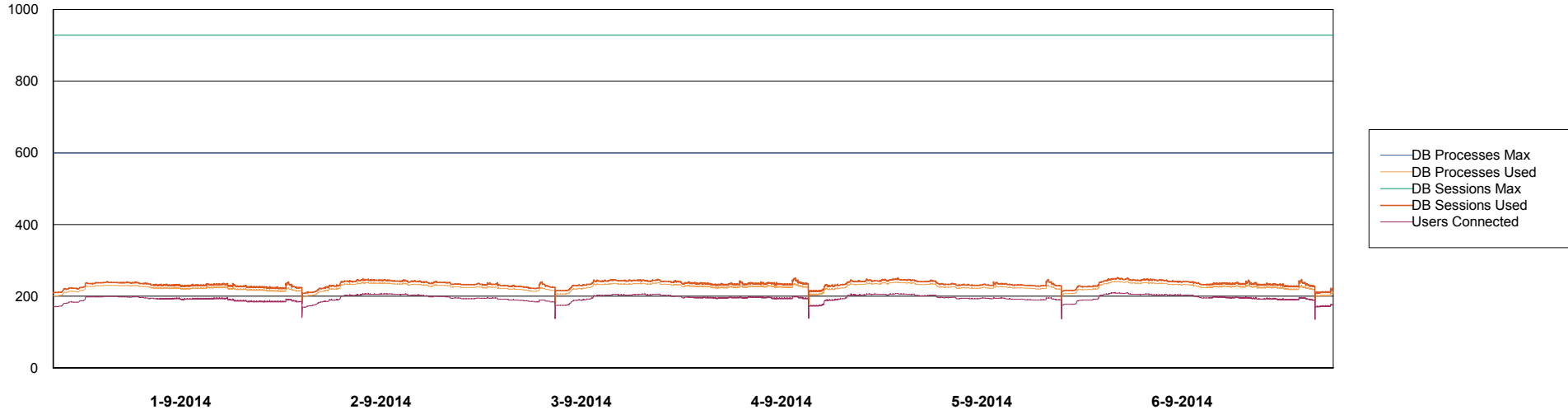
	Total disk space on C (GB)	Free disk space on C (GB)	Total disk space on D (GB)	Free disk space on D (GB)
6-9-2014	278	195	278	81
5-9-2014	278	195	278	84
4-9-2014	278	195	278	87
3-9-2014	278	195	278	60
2-9-2014	278	195	278	44
1-9-2014	278	195	278	46
31-8-2014	278	195	278	48

Weekly SLA Customer Report

Customer BCH Production
Database ID 28



DATABASE PERFORMANCE BCHDB_Production

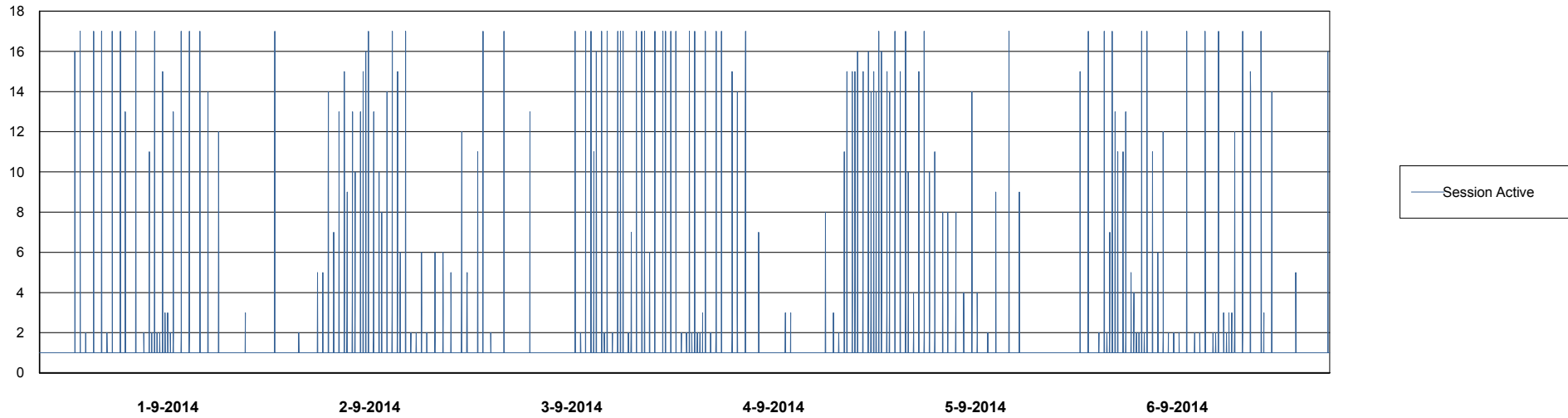
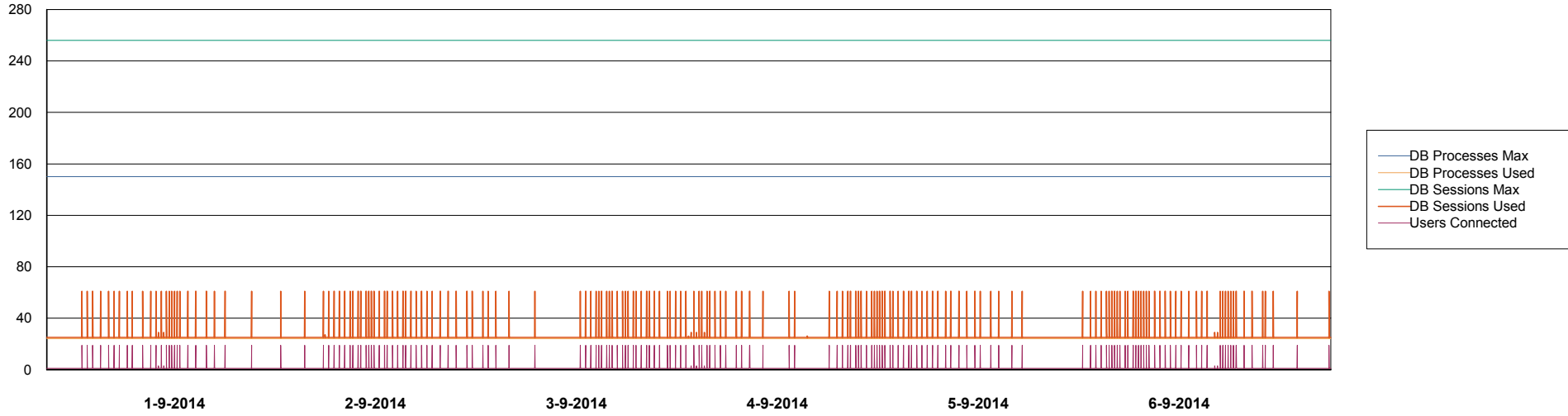


Weekly SLA Customer Report

Customer BCH Production
Database ID 28



DATABASE PERFORMANCE BCHDB_Standby



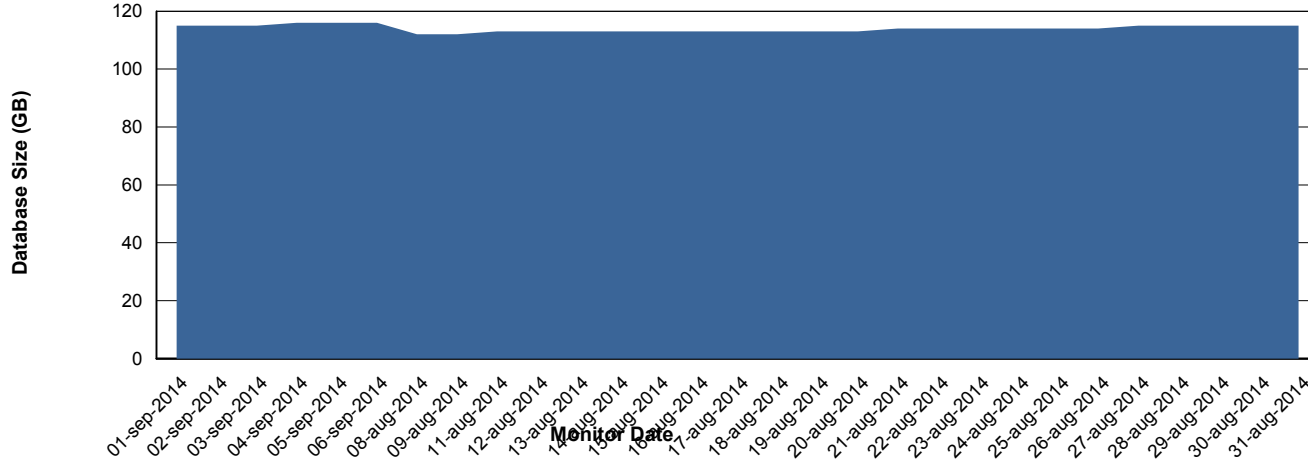
Weekly SLA Customer Report

Customer BCH Production
 Database ID 28



=====
 DATABASE SIZE BCHDB_Production
 =====

Database growth over last month



=====
 DATABASE TABLESPACES BCHDB_Production
 =====

TOTAL DATABASE SIZE PER TABLESPACE

Date	Tablespace Name	Filesize (Gb)	Usedsize (Gb)	Percentage free
6-9-2014	ABSDATA	26	0	100
	INDX	108	95	12
5-9-2014	ABSDATA	26	0	100
	INDX	108	95	12
4-9-2014	ABSDATA	26	0	100
	INDX	108	95	12
3-9-2014	ABSDATA	26	0	100
	INDX	108	95	12
2-9-2014	ABSDATA	26	0	100
	INDX	108	92	15
1-9-2014	ABSDATA	26	0	100
	INDX	108	92	15
31-8-2014	ABSDATA	26	0	100
	INDX	108	92	15

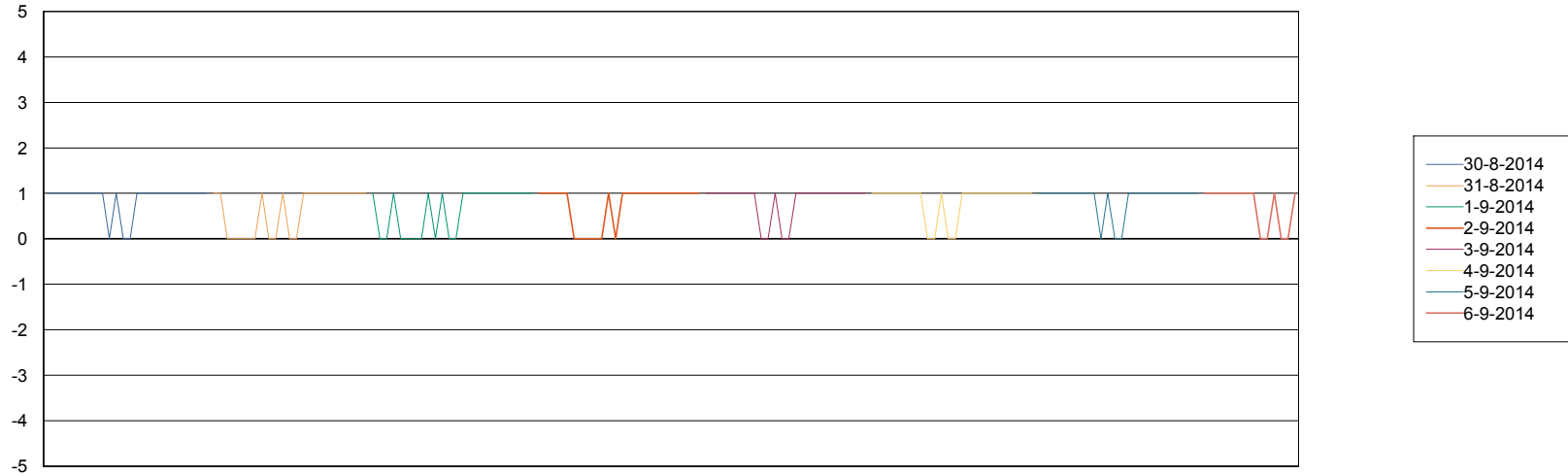
Weekly SLA Customer Report

Customer BCH Production
Database ID 28



=====
STANDBY DATABASE HEALTH BCH Production
=====

Recovery lag for last 7 days



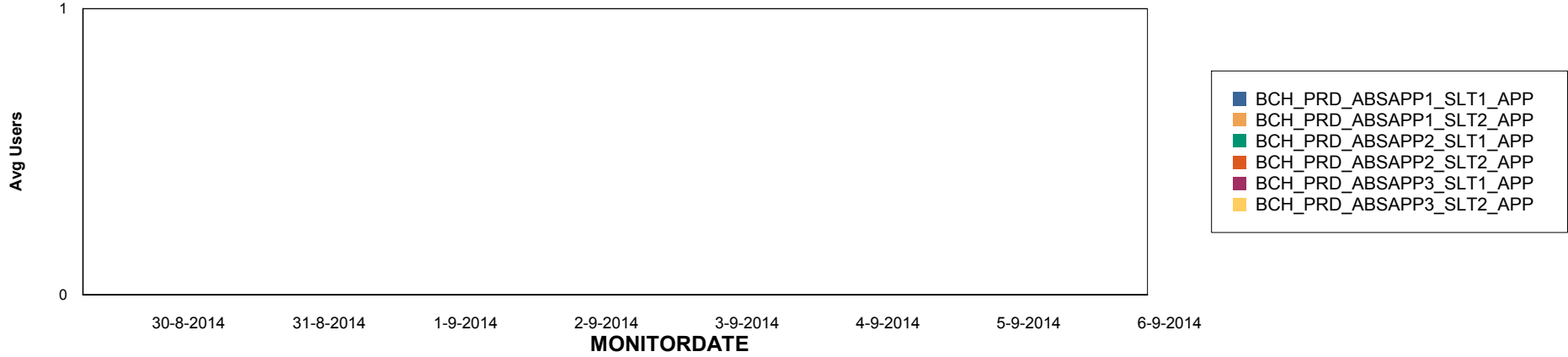
Weekly SLA Customer Report

Customer BCH Production
Database ID 28

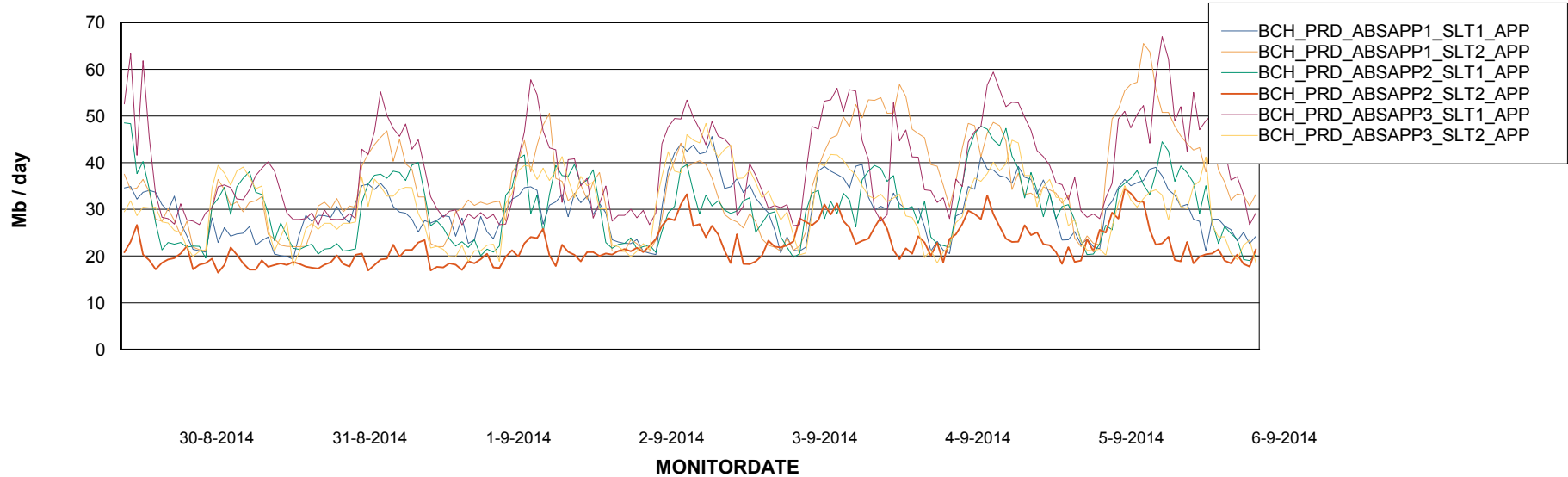


=====
ABSolute Application Server Services
=====

Disaster per ABS Server



Avg memory used per ABS Server Service



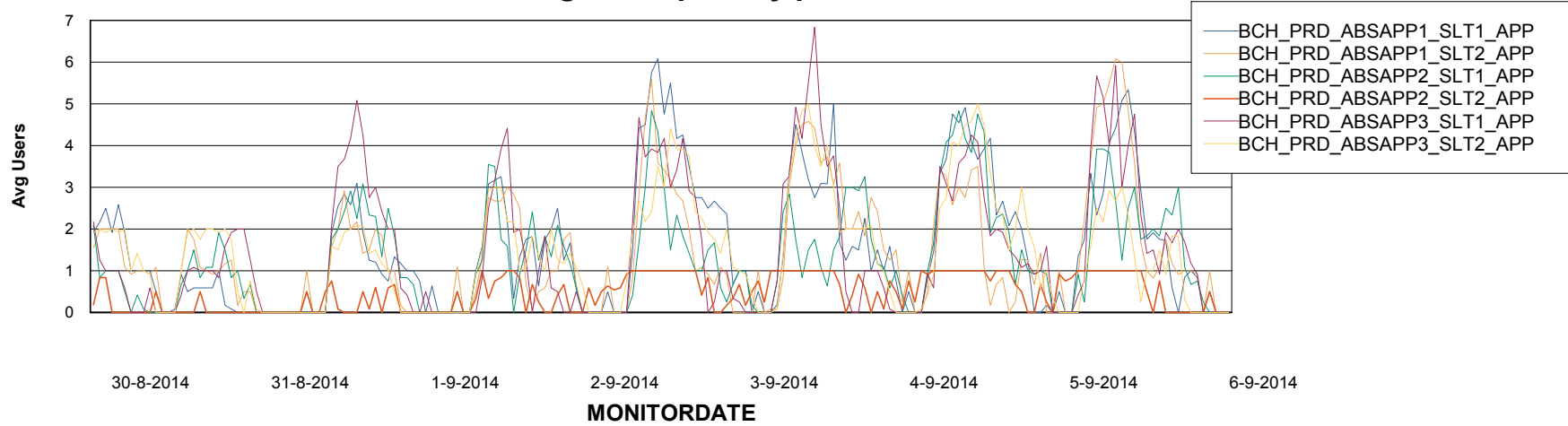
Weekly SLA Customer Report

Customer BCH Production
Database ID 28



=====
ABSolute Application Server Services
=====

Avg users per day per ABS server



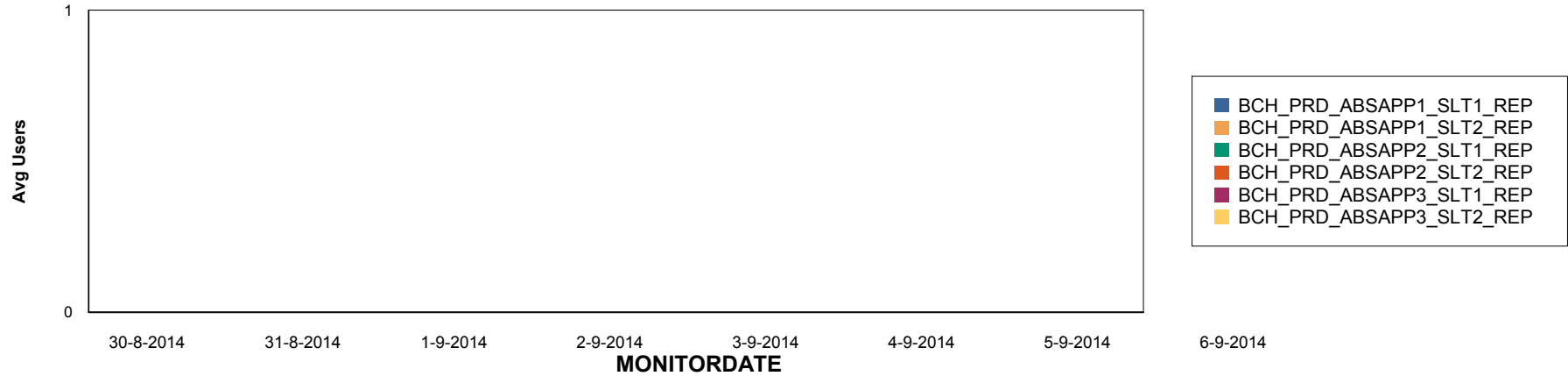
Weekly SLA Customer Report

Customer BCH Production
Database ID 28

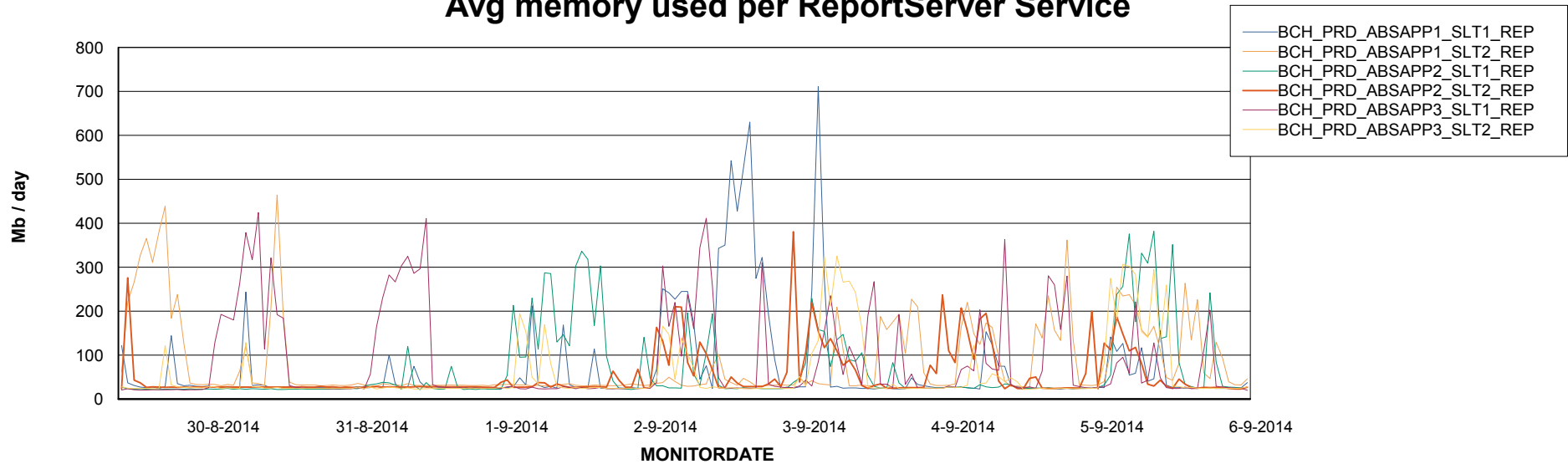


=====
ABSolute Application ReportServer Services
=====

Disaster per ReportServer



Avg memory used per ReportServer Service



Weekly SLA Customer Report

Customer BCH Production
Database ID 28



Disaster per ABS component

