

Weekly SLA Customer Report

Customer NIX_Production
 Database ID 51



=====
 HARDDISK USAGE NIX_PRD_ABSAPP1
 =====

	Total disk space on C (GB)	Free disk space on C (GB)
30-8-2014	136	87
29-8-2014	136	87
28-8-2014	136	87
27-8-2014	136	87
26-8-2014	136	87
25-8-2014	136	87
24-8-2014	136	87

=====
 HARDDISK USAGE NIX_PRD_ABSWEB1
 =====

	Total disk space on C (GB)	Free disk space on C (GB)	Total disk space on E (GB)	Free disk space on E (GB)
30-8-2014	930	740	0	0
29-8-2014	930	742	0	0
28-8-2014	930	743	0	0
27-8-2014	930	745	0	0
26-8-2014	930	728	0	0
25-8-2014	930	726	0	0
24-8-2014	930	724	0	0

Weekly SLA Customer Report

Customer NIX_Production
 Database ID 51



=====
 HARDDISK USAGE NIX_PRD_ORACLE_B11
 =====

	Total disk space on C (GB)	Free disk space on C (GB)	Total disk space on D (GB)	Free disk space on D (GB)	Total disk space on E (GB)	Free disk space on E (GB)
30-8-2014	40	7	279	180	236	170
29-8-2014	40	7	279	180	236	170
28-8-2014	40	7	279	179	236	168
27-8-2014	40	7	279	178	236	166
26-8-2014	40	7	279	180	236	170
25-8-2014	40	7	279	180	236	170
24-8-2014	40	7	279	180	236	170

=====
 HARDDISK USAGE NIX_PRD_ORCDB1
 =====

	Total disk space on C (GB)	Free disk space on C (GB)	Total disk space on D (GB)	Free disk space on D (GB)	Total disk space on E (GB)	Free disk space on E (GB)
30-8-2014	136	21	136	35	136	101
29-8-2014	136	21	136	35	136	102
28-8-2014	136	21	136	35	136	102
27-8-2014	136	21	136	35	136	102
26-8-2014	136	21	136	35	136	102
25-8-2014	136	21	136	35	136	102
24-8-2014	136	21	136	35	136	102

Weekly SLA Customer Report

Customer NIX_Production
 Database ID 51



=====
 HARDDISK USAGE NIX_PRD_ORCDB2
 =====

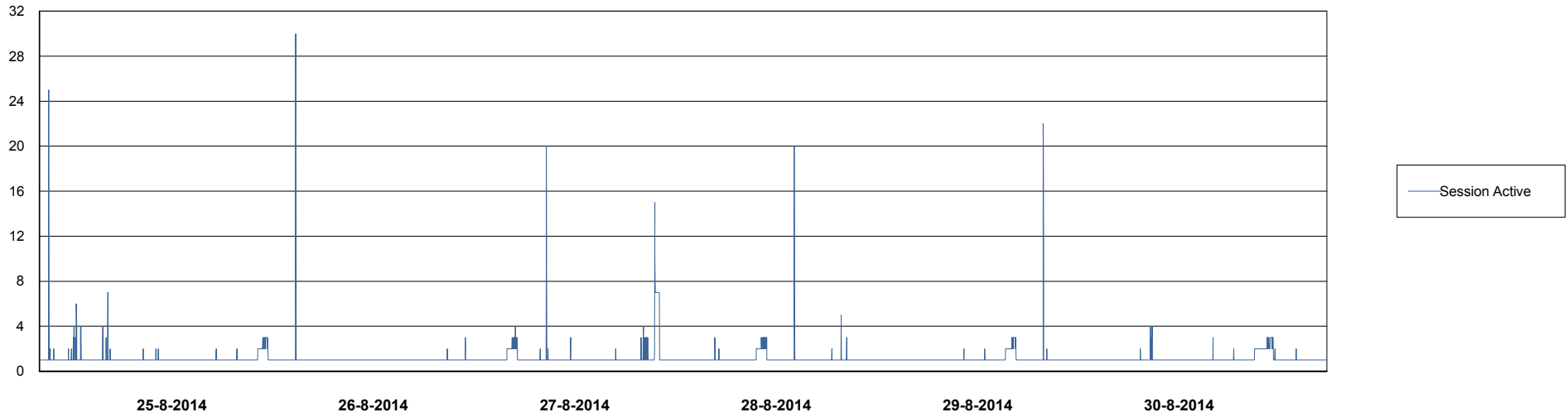
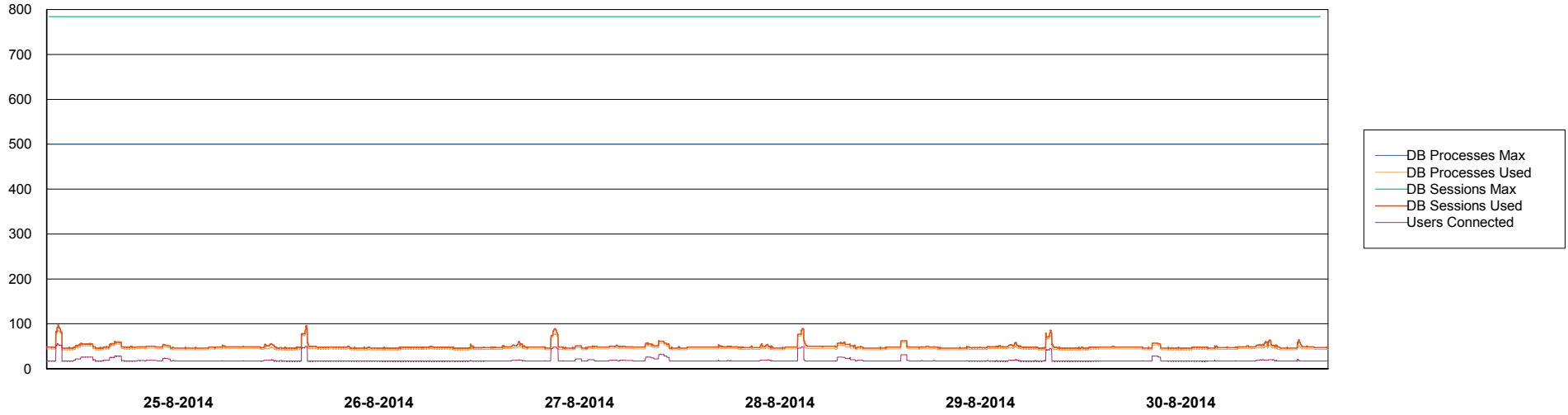
	Total disk space on C (GB)	Free disk space on C (GB)	Total disk space on D (GB)	Free disk space on D (GB)	Total disk space on E (GB)	Free disk space on E (GB)
30-8-2014	279	49	279	49	279	173
29-8-2014	279	49	279	49	279	195
28-8-2014	279	49	279	49	279	183
27-8-2014	279	49	279	49	279	156
26-8-2014	279	48	279	49	279	88
25-8-2014	279	48	279	49	279	60
24-8-2014	279	48	279	49	279	87

Weekly SLA Customer Report

Customer NIX_Production
Database ID 51



DATABASE PERFORMANCE NIXDB_BI



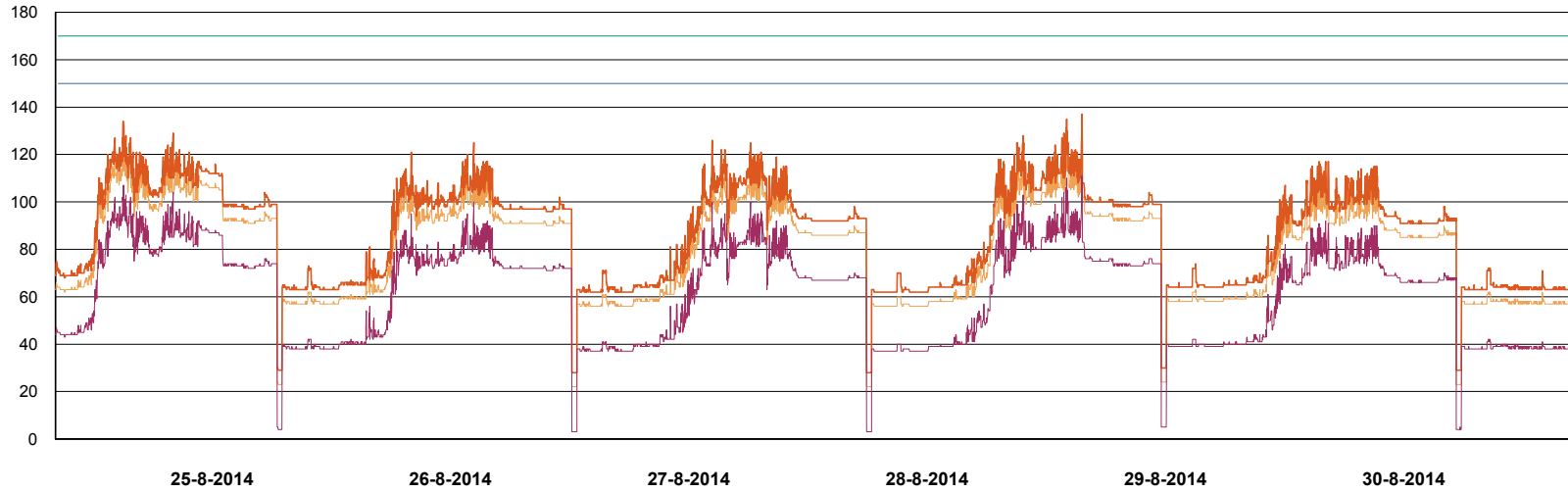
Weekly SLA Customer Report

Customer NIX_Production
Database ID 51

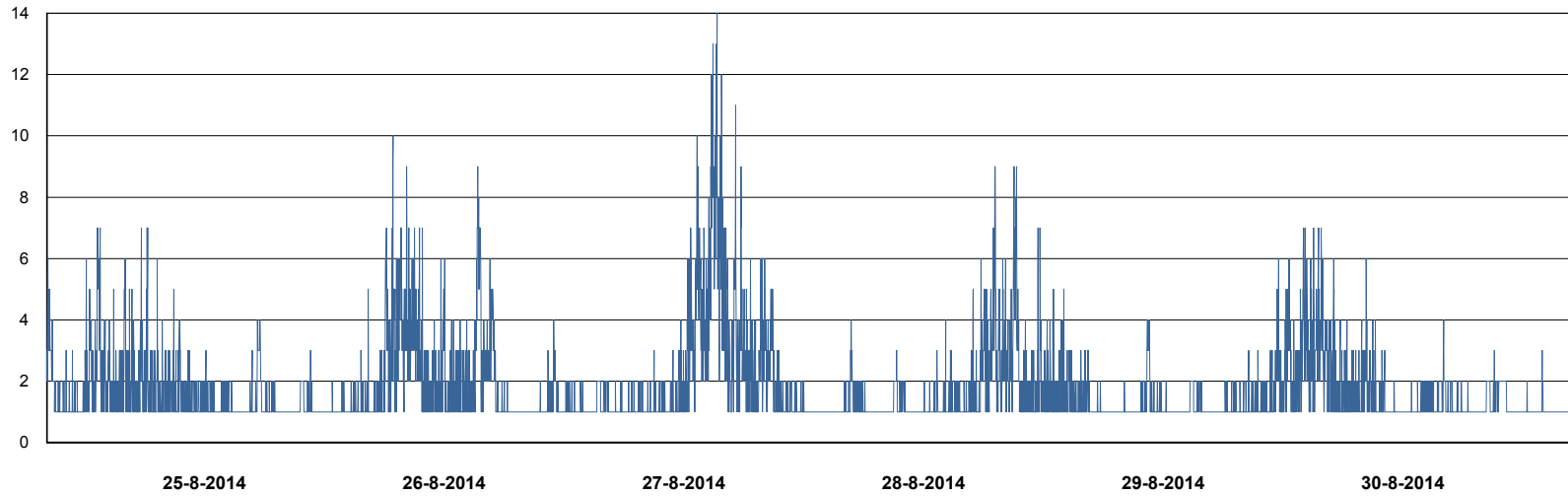


DATABASE PERFORMANCE

NIXDB_Production



- DB Processes Max
- DB Processes Used
- DB Sessions Max
- DB Sessions Used
- Users Connected



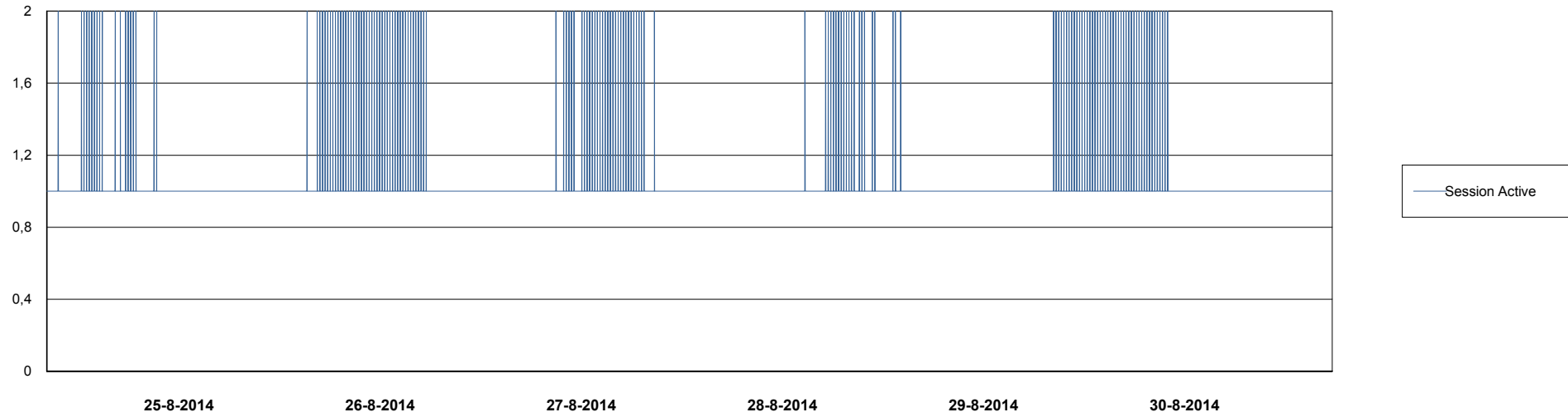
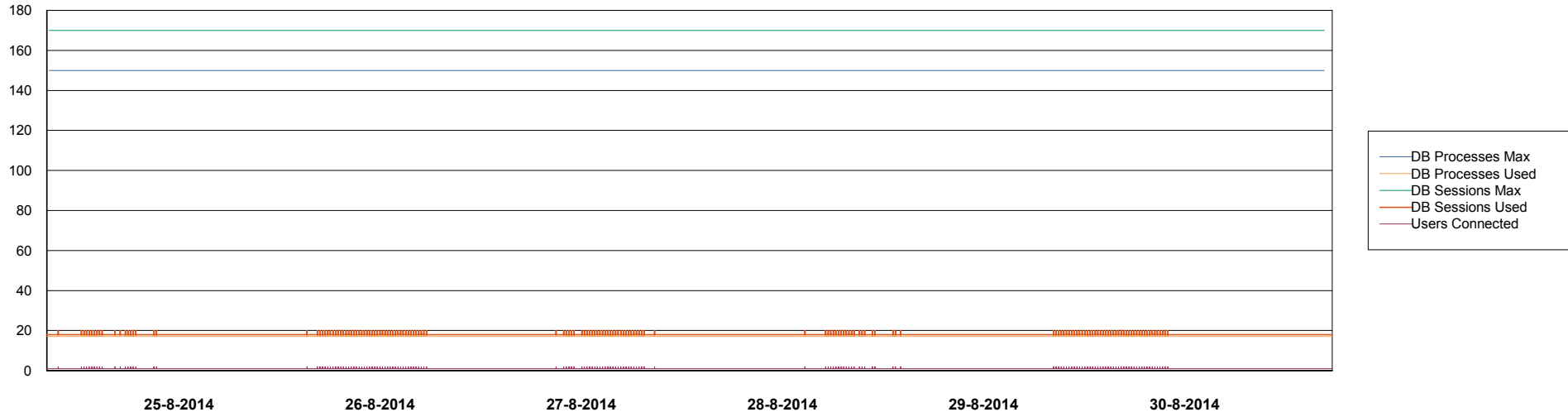
- Session Active

Weekly SLA Customer Report

Customer NIX_Production
Database ID 51



DATABASE PERFORMANCE NIXDB_Standby



Weekly SLA Customer Report

Customer NIX_Production
 Database ID 51



=====
 DATABASE TABLESPACES NIXDB_BI
 =====
 TOTAL DATABASE SIZE PER TABLESPACE

Date	Tablespace Name	Filesize (Gb)	Usedsize (Gb)	Percentage free
30-8-2014	ABSDATA	20	17	15
	INDX	40	26	35
29-8-2014	ABSDATA	20	17	15
	INDX	40	26	35
28-8-2014	ABSDATA	20	17	15
	INDX	40	26	35
27-8-2014	ABSDATA	20	17	15
	INDX	40	26	35
26-8-2014	ABSDATA	20	17	15
	INDX	40	26	35
25-8-2014	ABSDATA	20	17	15
	INDX	40	26	35
24-8-2014	ABSDATA	20	17	15
	INDX	40	26	35

Weekly SLA Customer Report

Customer NIX_Production
 Database ID 51



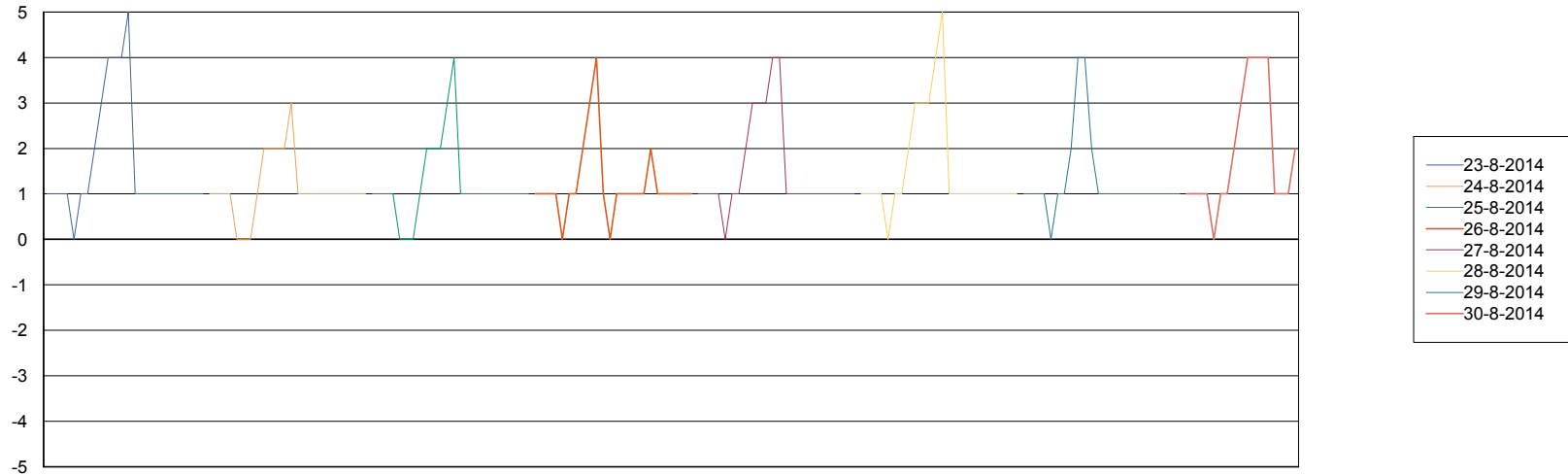
=====
 DATABASE TABLESPACES NIXDB_Production
 =====

TOTAL DATABASE SIZE PER TABLESPACE

Date	Tablespace Name	Filesize (Gb)	Usedsize (Gb)	Percentage free
30-8-2014	ABSDATA	40	27	33
	INDX	97	73	25
29-8-2014	ABSDATA	40	27	33
	INDX	97	73	25
28-8-2014	ABSDATA	40	27	33
	INDX	97	73	25
27-8-2014	ABSDATA	40	27	33
	INDX	97	73	25
26-8-2014	ABSDATA	40	27	33
	INDX	97	73	25
25-8-2014	ABSDATA	40	27	33
	INDX	97	73	25
24-8-2014	ABSDATA	40	27	33
	INDX	97	73	25

=====
 STANDBY DATABASE HEALTH NIX_Production
 =====

Recovery lag for last 7 days



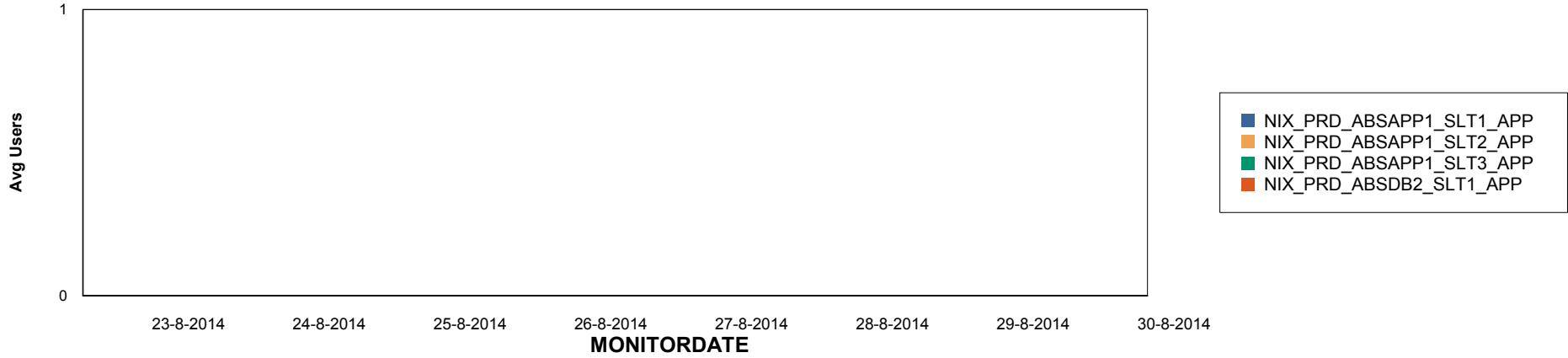
Weekly SLA Customer Report

Customer NIX_Production
Database ID 51

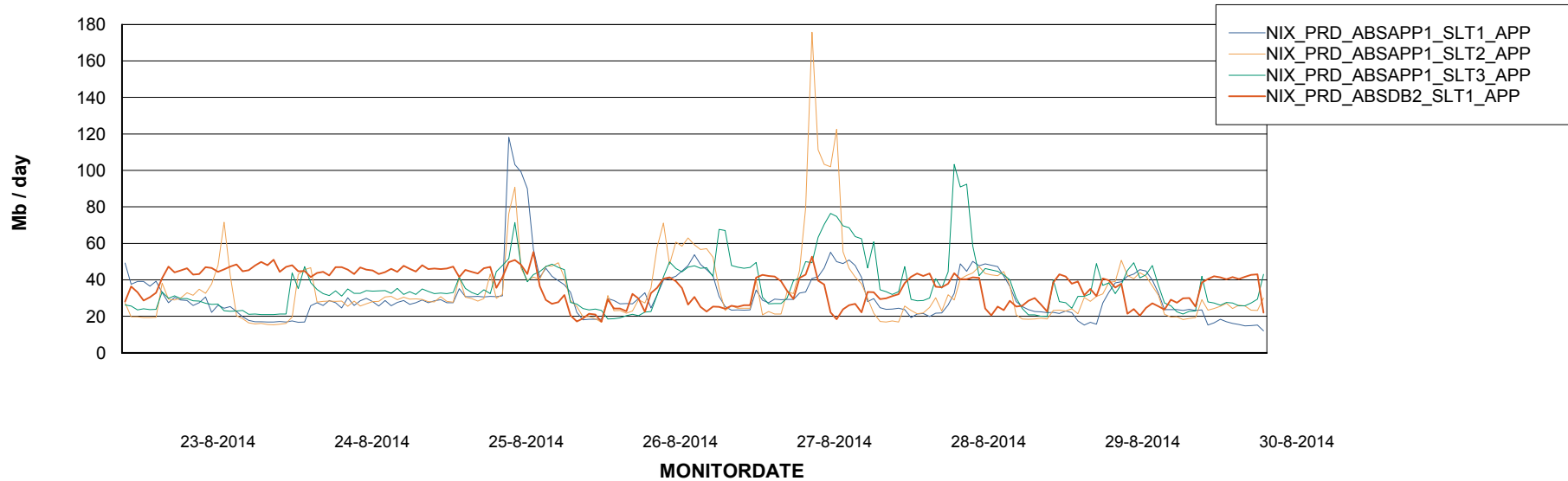


=====
ABSolute Application Server Services
=====

Disaster per ABS Server



Avg memory used per ABS Server Service



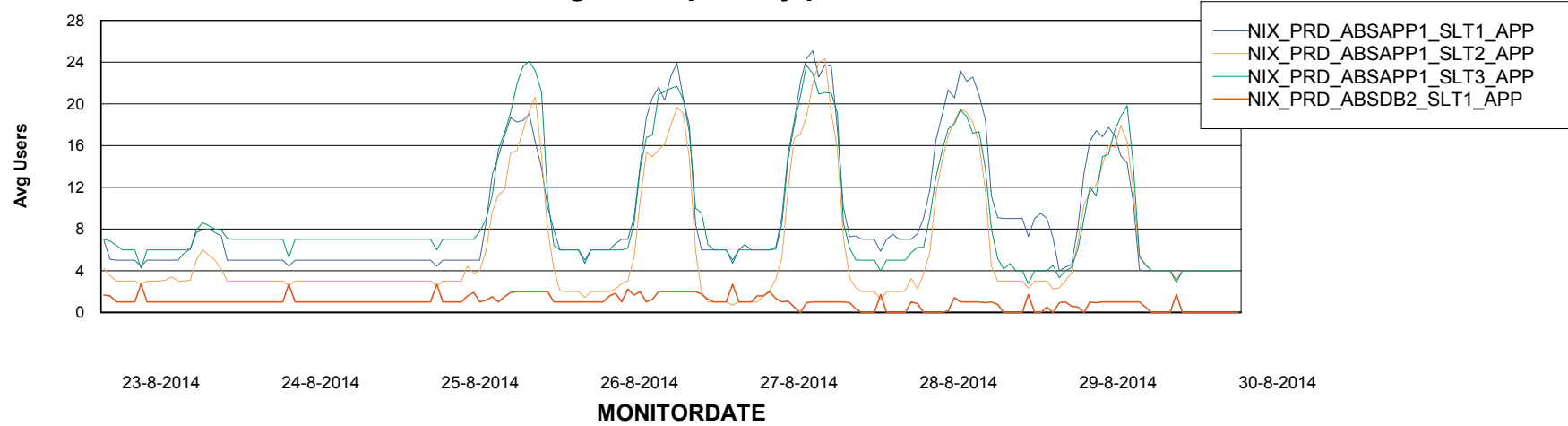
Weekly SLA Customer Report

Customer NIX_Production
Database ID 51



=====
ABSolute Application Server Services
=====

Avg users per day per ABS server



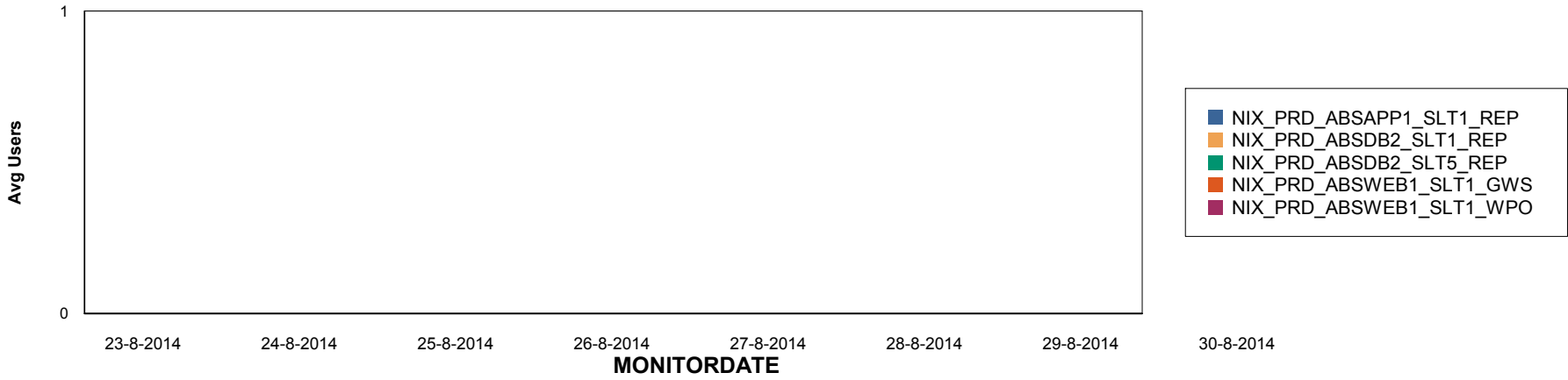
Weekly SLA Customer Report

Customer NIX_Production
Database ID 51

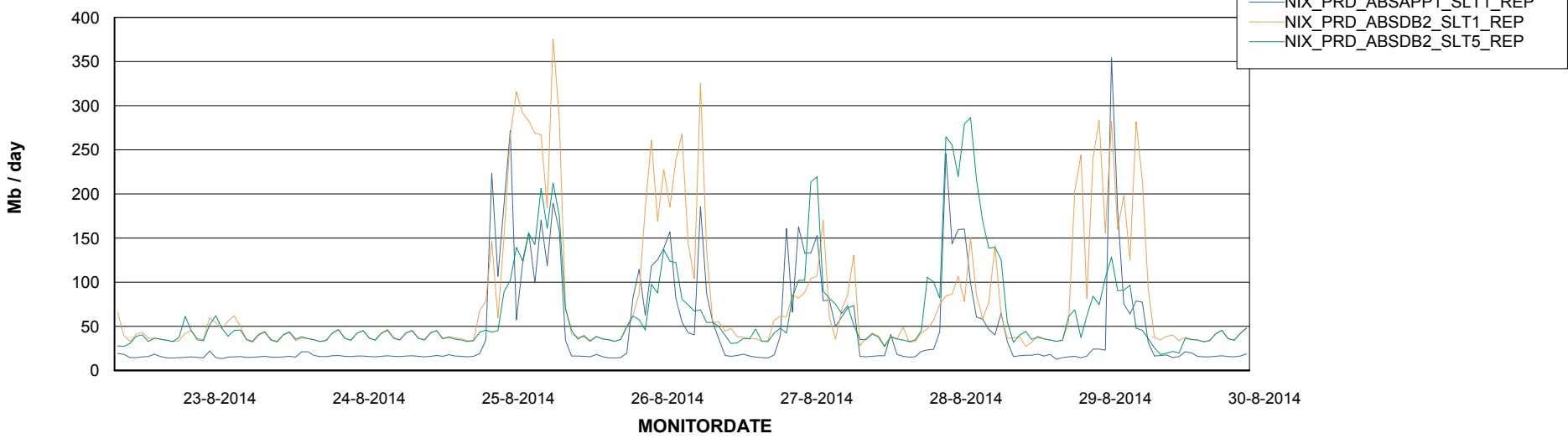


=====
ABSolute Application ReportServer Services
=====

Disaster per ReportServer



Avg memory used per ReportServer Service



Weekly SLA Customer Report

Customer NIX_Production
Database ID 51



Disaster per ABS component

