

Weekly SLA Customer Report

Customer LLG_Production
 Database ID 53



=====
 HARDDISK USAGE LLG_PRD_BI01
 =====

	Total disk space on C (GB)	Free disk space on C (GB)
30-8-2014	559	399
29-8-2014	559	399
28-8-2014	559	399
27-8-2014	559	399
26-8-2014	559	399
25-8-2014	559	399
24-8-2014	559	400

=====
 HARDDISK USAGE LLG_PRD_OR01
 =====

	Total disk space on C (GB)	Free disk space on C (GB)	Total disk space on D (GB)	Free disk space on D (GB)
30-8-2014	279	178	600	93
29-8-2014	279	178	600	93
28-8-2014	279	178	600	91
27-8-2014	279	178	600	97
26-8-2014	279	178	600	108
25-8-2014	279	178	600	122
24-8-2014	279	178	600	127

Weekly SLA Customer Report

Customer LLG_Production
 Database ID 53



=====
 HARDDISK USAGE LLG_PRD_OR2
 =====

	Total disk space on C (GB)	Free disk space on C (GB)	Total disk space on D (GB)	Free disk space on D (GB)
30-8-2014	293	250	545	167
29-8-2014	293	250	545	163
28-8-2014	293	250	545	156
27-8-2014	293	250	545	157
26-8-2014	293	250	545	164
25-8-2014	293	250	545	174
24-8-2014	293	250	545	174

=====
 HARDDISK USAGE LLG_PRD_vABS01
 =====

	Total disk space on C (GB)	Free disk space on C (GB)	Total disk space on D (GB)	Free disk space on D (GB)
30-8-2014	150	68	150	147
29-8-2014	150	68	150	147
28-8-2014	150	68	150	147
27-8-2014	150	68	150	147
26-8-2014	150	68	150	147
25-8-2014	150	68	150	147
24-8-2014	150	69	150	147

Weekly SLA Customer Report

Customer LLG_Production
 Database ID 53



=====
 HARDDISK USAGE LLG_PRD_vABS02
 =====

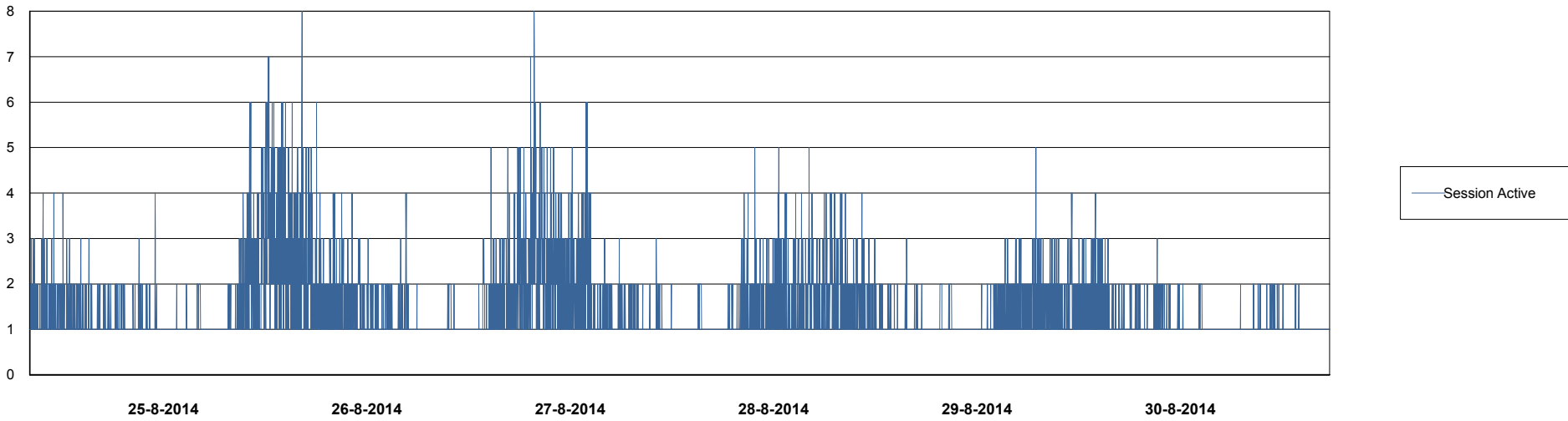
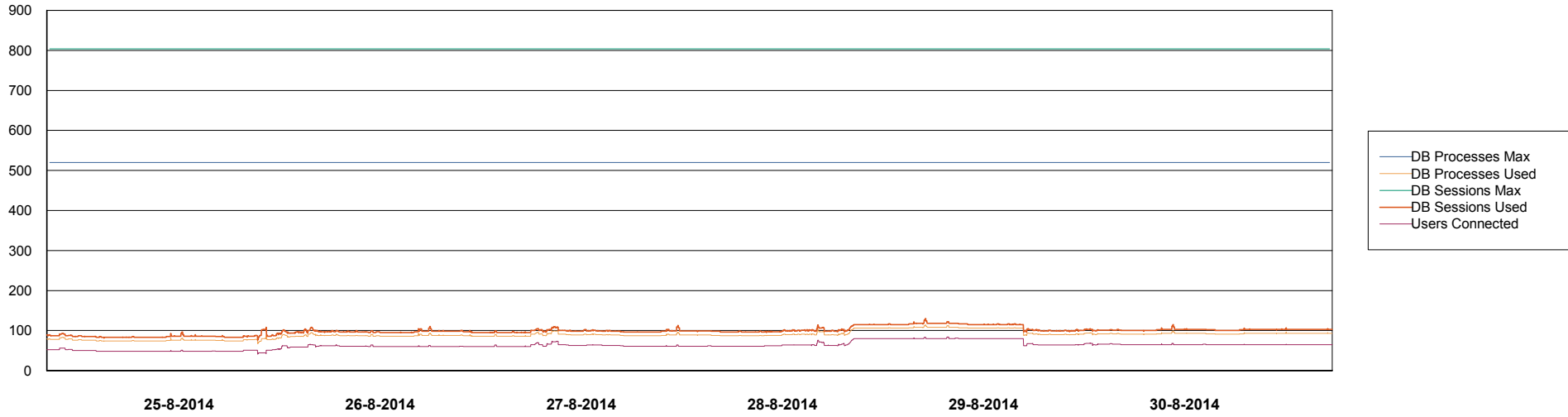
	Total disk space on C (GB)	Free disk space on C (GB)	Total disk space on D (GB)	Free disk space on D (GB)
30-8-2014	150	34	150	143
29-8-2014	150	34	150	143
28-8-2014	150	34	150	143
27-8-2014	150	35	150	143
26-8-2014	150	35	150	143
25-8-2014	150	35	150	143
24-8-2014	150	35	150	143

Weekly SLA Customer Report

Customer LLG_Production
Database ID 53



DATABASE PERFORMANCE LLGDB_Production

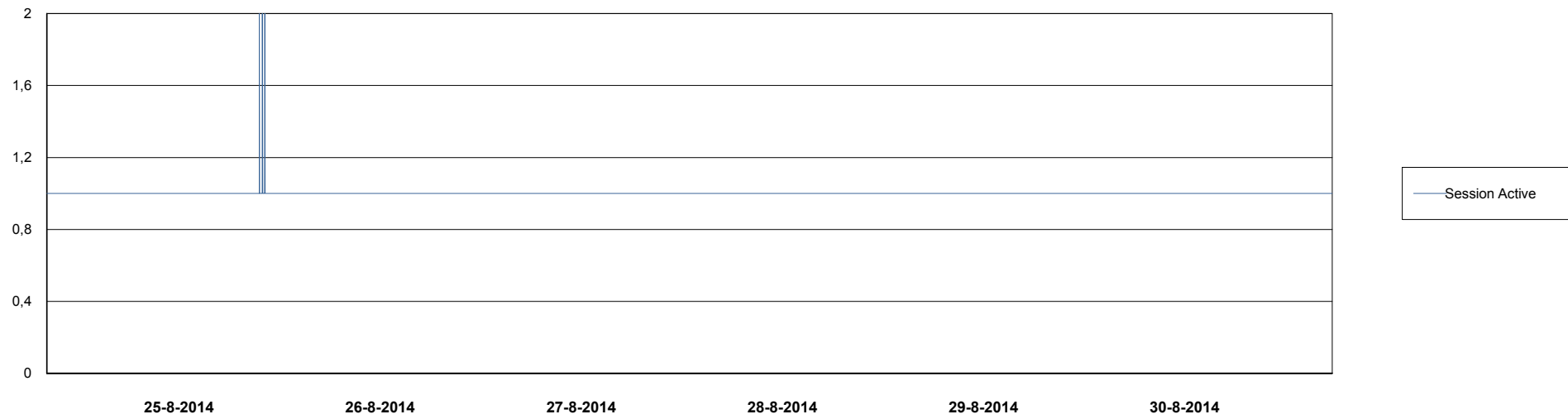
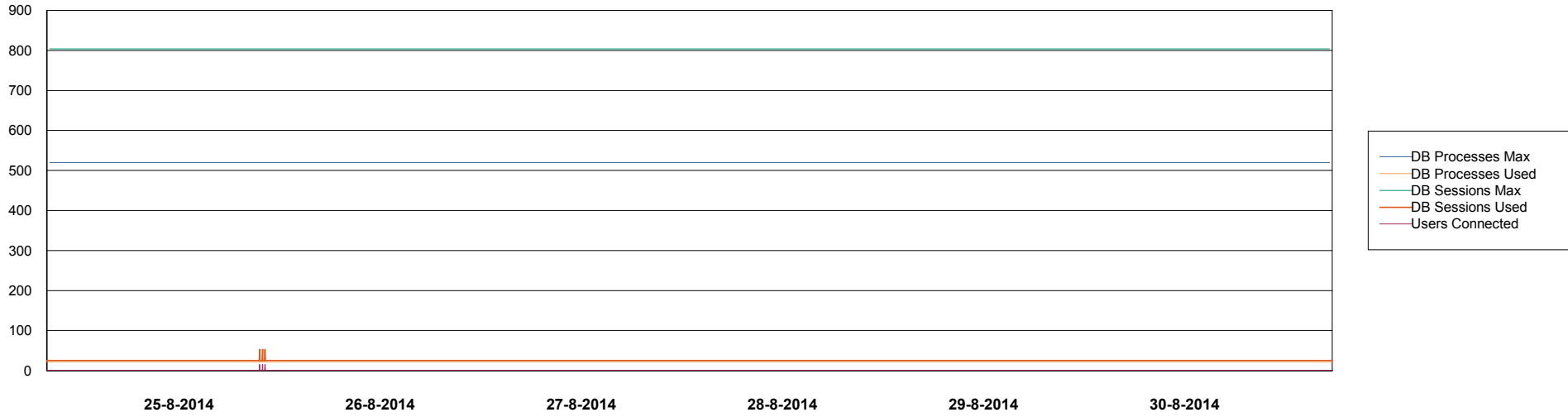


Weekly SLA Customer Report

Customer LLG_Production
Database ID 53



DATABASE PERFORMANCE LLGDB_Standby



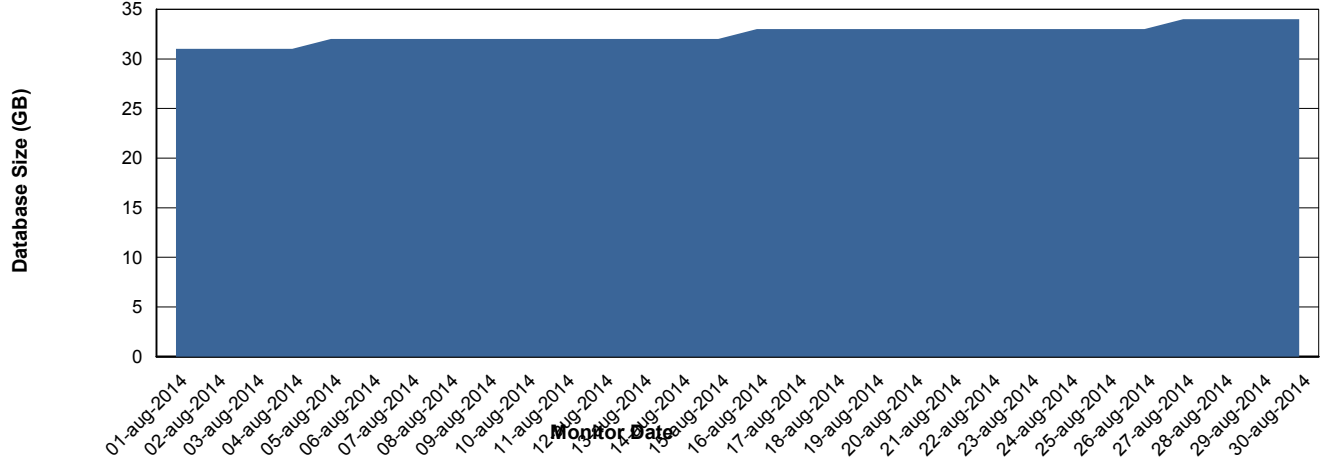
Weekly SLA Customer Report

Customer LLG_Production
 Database ID 53



=====
 DATABASE SIZE LLGDB_Production
 =====

Database growth over last month



=====
 DATABASE TABLESPACES LLGDB_Production
 =====

TOTAL DATABASE SIZE PER TABLESPACE

Date	Tablespace Name	Filesize (Gb)	Usedsize (Gb)	Percentage free
30-8-2014	ABSDATA	20	12	40
	INDX	40	20	50
29-8-2014	ABSDATA	20	12	40
	INDX	40	20	50
28-8-2014	ABSDATA	20	12	40
	INDX	40	20	50
27-8-2014	ABSDATA	20	12	40
	INDX	40	20	50
26-8-2014	ABSDATA	20	12	40
	INDX	40	20	50
25-8-2014	ABSDATA	20	11	45
	INDX	40	20	50
24-8-2014	ABSDATA	20	11	45
	INDX	40	20	50

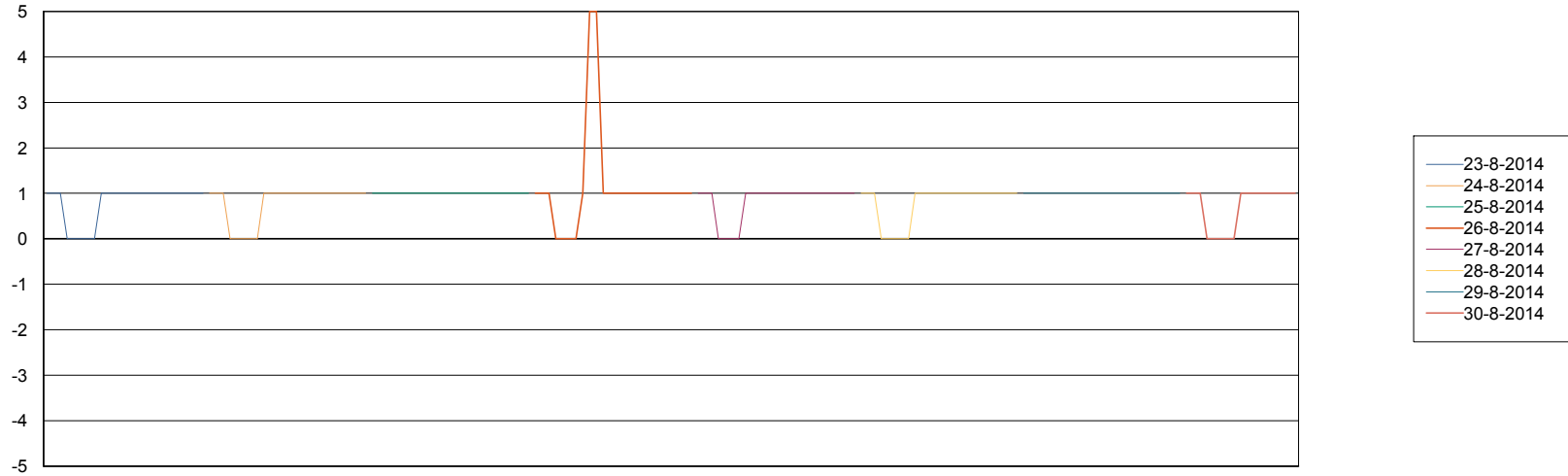
Weekly SLA Customer Report

Customer LLG_Production
Database ID 53



=====
STANDBY DATABASE HEALTH LLG_Production
=====

Recovery lag for last 7 days



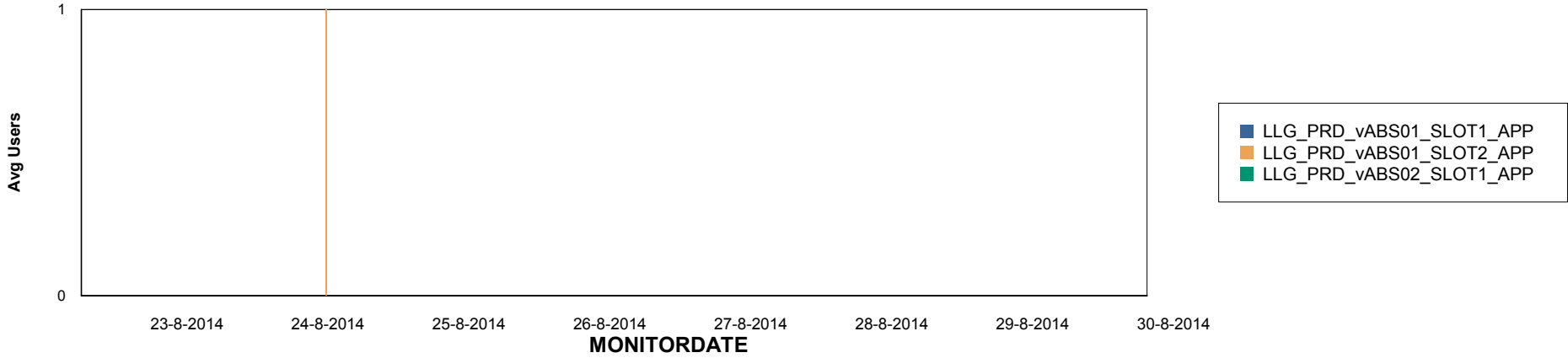
Weekly SLA Customer Report

Customer LLG_Production
Database ID 53

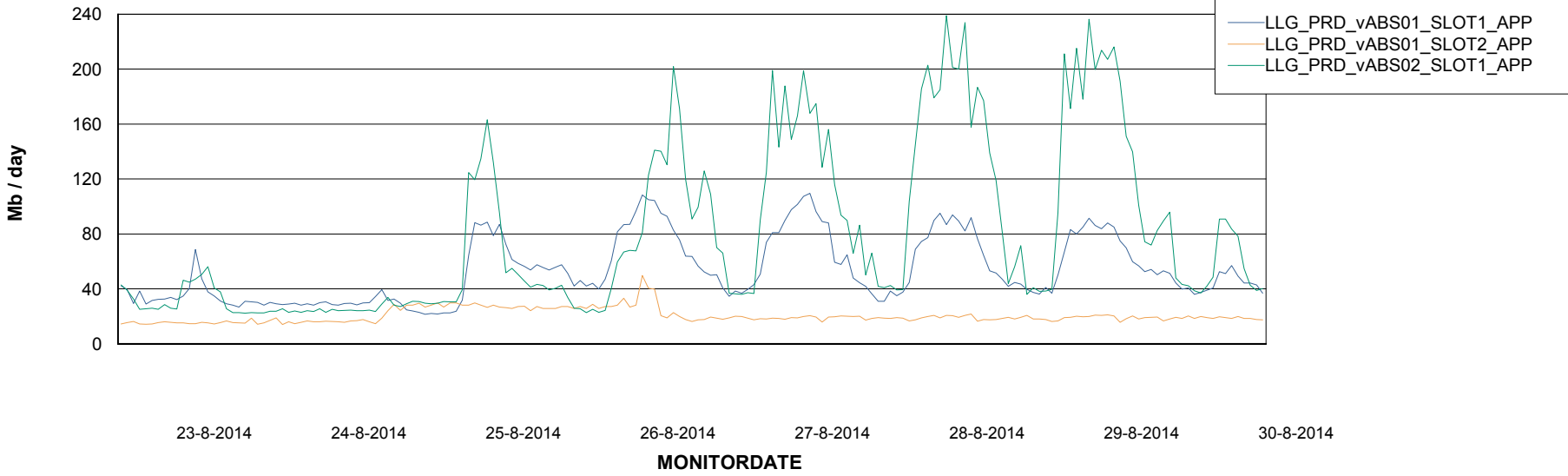


=====
ABSolute Application Server Services
=====

Disaster per ABS Server



Avg memory used per ABS Server Service



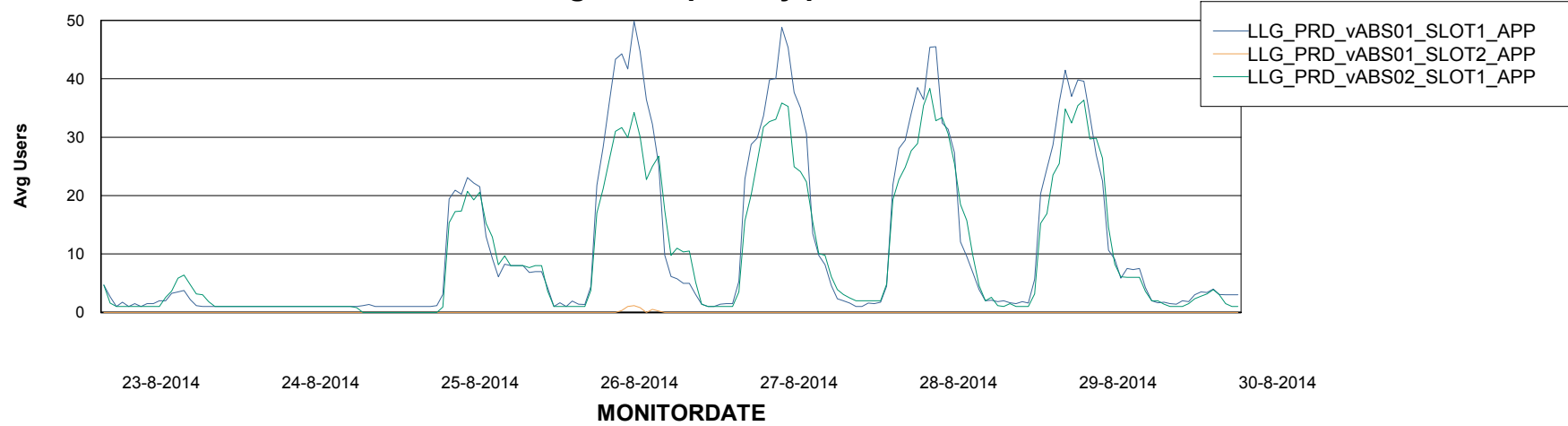
Weekly SLA Customer Report

Customer LLG_Production
Database ID 53



=====
ABSolute Application Server Services
=====

Avg users per day per ABS server



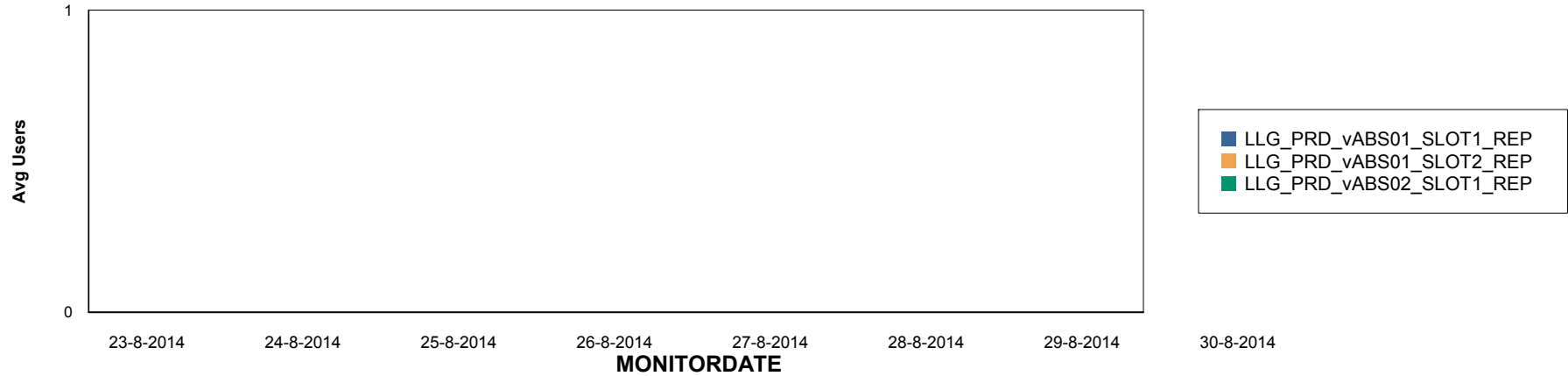
Weekly SLA Customer Report

Customer LLG_Production
Database ID 53

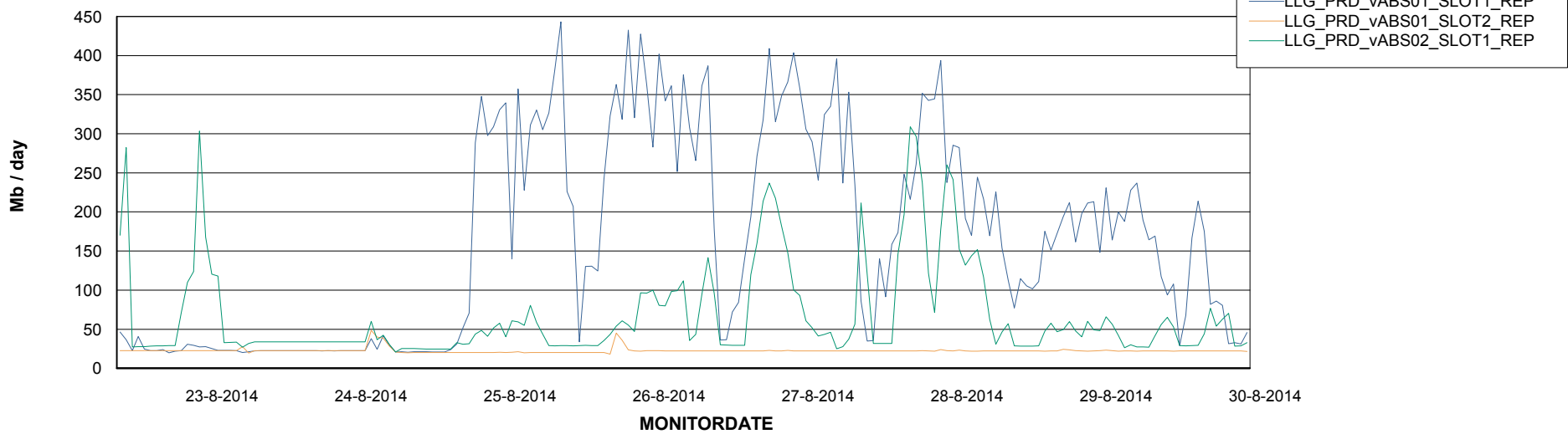


=====
ABSolute Application ReportServer Services
=====

Disaster per ReportServer



Avg memory used per ReportServer Service



Weekly SLA Customer Report

Customer LLG_Production
Database ID 53



Disaster per ABS component

