

Weekly SLA Customer Report

Customer JWR Production
 Database ID 43



=====
 HARDDISK USAGE JWR_PRD_JWR-ABS-01
 =====

	Used disk space on / (GB)	Total disk space on / (GB)	Free disk space on / (GB)
30-8-2014	27	49	20
29-8-2014	27	49	20
28-8-2014	27	49	20
27-8-2014	27	49	20
26-8-2014	27	49	20
25-8-2014	27	49	20
24-8-2014	27	49	20

=====
 HARDDISK USAGE JWR_PRD_JWR-ABS-02
 =====

	Used disk space on / (GB)	Total disk space on / (GB)	Free disk space on / (GB)
30-8-2014	24	49	23
29-8-2014	24	49	23
28-8-2014	24	49	23
27-8-2014	24	49	23
26-8-2014	24	49	23
25-8-2014	24	49	23
24-8-2014	24	49	23

Weekly SLA Customer Report

Customer JWR Production
 Database ID 43



=====

HARDDISK USAGE JWR_PRD_JWR-ODB-01

=====

	Used disk space on / (GB)	Total disk space on / (GB)	Free disk space on / (GB)
30-8-2014	72	90	14
29-8-2014	72	90	14
28-8-2014	72	90	14
27-8-2014	71	90	14
26-8-2014	71	90	14
25-8-2014	72	90	14
24-8-2014	71	90	14

=====

HARDDISK USAGE JWR_PRD_JWR-ODB-02

=====

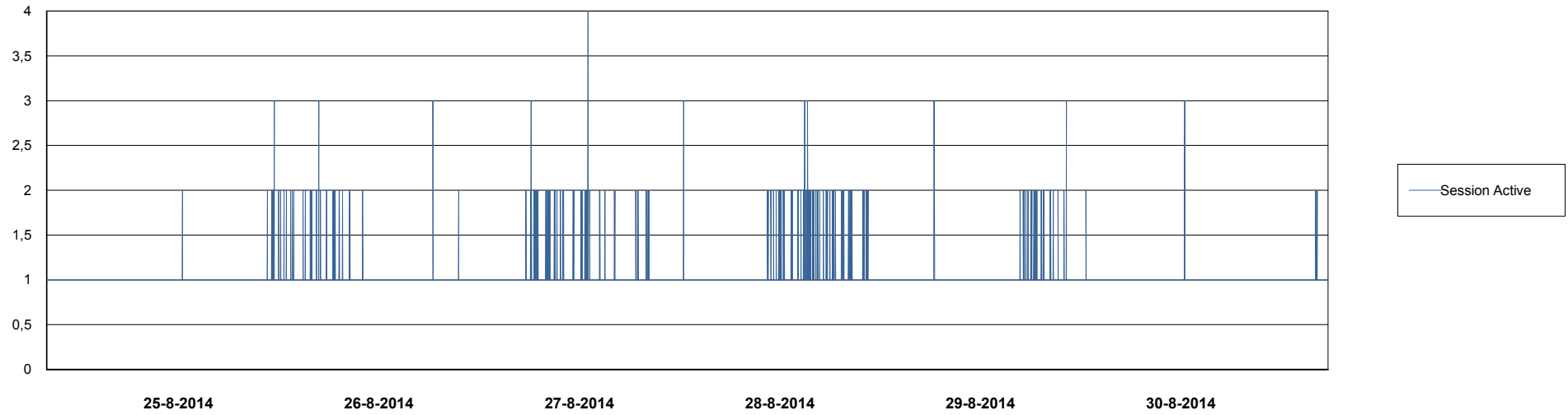
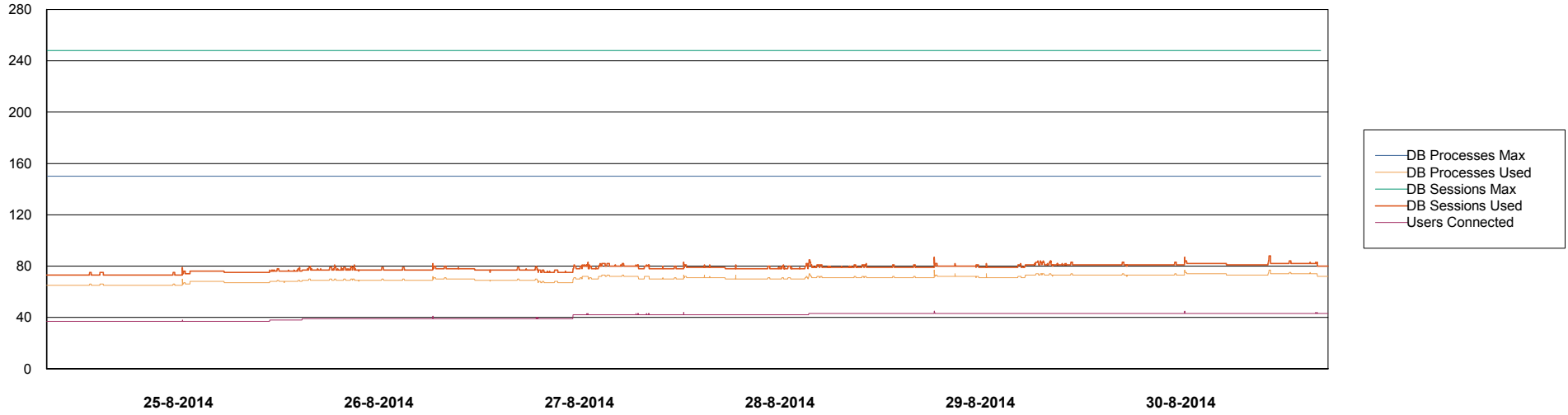
	Used disk space on / (GB)	Total disk space on / (GB)	Free disk space on / (GB)
30-8-2014	91	138	40
29-8-2014	91	138	40
28-8-2014	91	138	40
27-8-2014	91	138	40
26-8-2014	91	138	40
25-8-2014	91	138	40
24-8-2014	91	138	40

Weekly SLA Customer Report

Customer JWR Production
Database ID 43



DATABASE PERFORMANCE JWRDB_Production



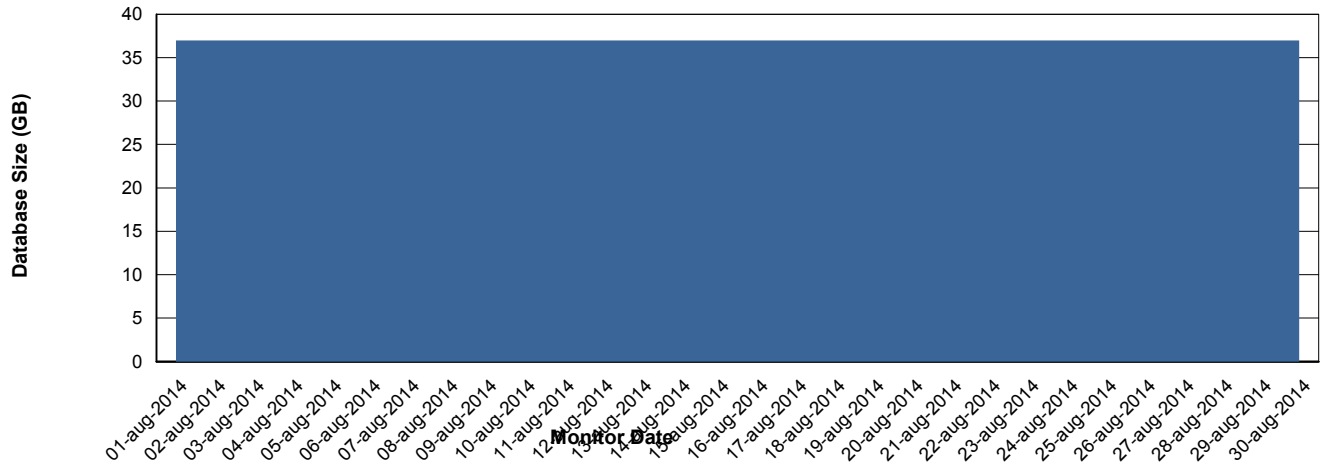
Weekly SLA Customer Report

Customer JWR Production
 Database ID 43



=====
 DATABASE SIZE JWRDB_Production
 =====

Database growth over last month



=====
 DATABASE TABLESPACES JWRDB_Production
 =====

TOTAL DATABASE SIZE PER TABLESPACE

Date	Tablespace Name	Filesize (Gb)	Usedsize (Gb)	Percentage free
30-8-2014	ABSDATA	15	11	27
	INDX	30	26	13
29-8-2014	ABSDATA	15	11	27
	INDX	30	26	13
28-8-2014	ABSDATA	15	11	27
	INDX	30	26	13
27-8-2014	ABSDATA	15	11	27
	INDX	30	26	13
26-8-2014	ABSDATA	15	11	27
	INDX	30	26	13
25-8-2014	ABSDATA	15	11	27
	INDX	30	26	13
24-8-2014	ABSDATA	15	11	27
	INDX	30	26	13

Weekly SLA Customer Report

Customer JWR Production
Database ID 43



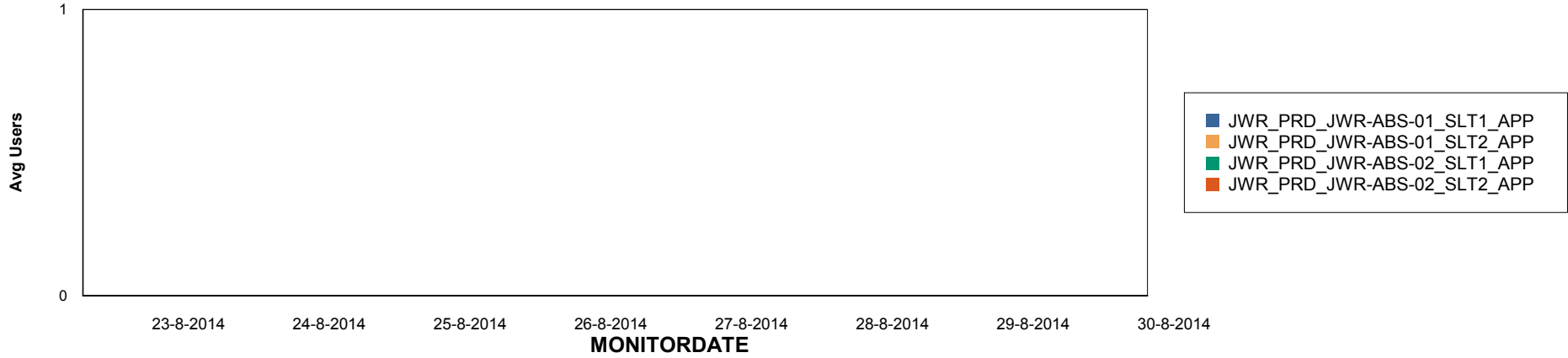
Weekly SLA Customer Report

Customer JWR Production
Database ID 43

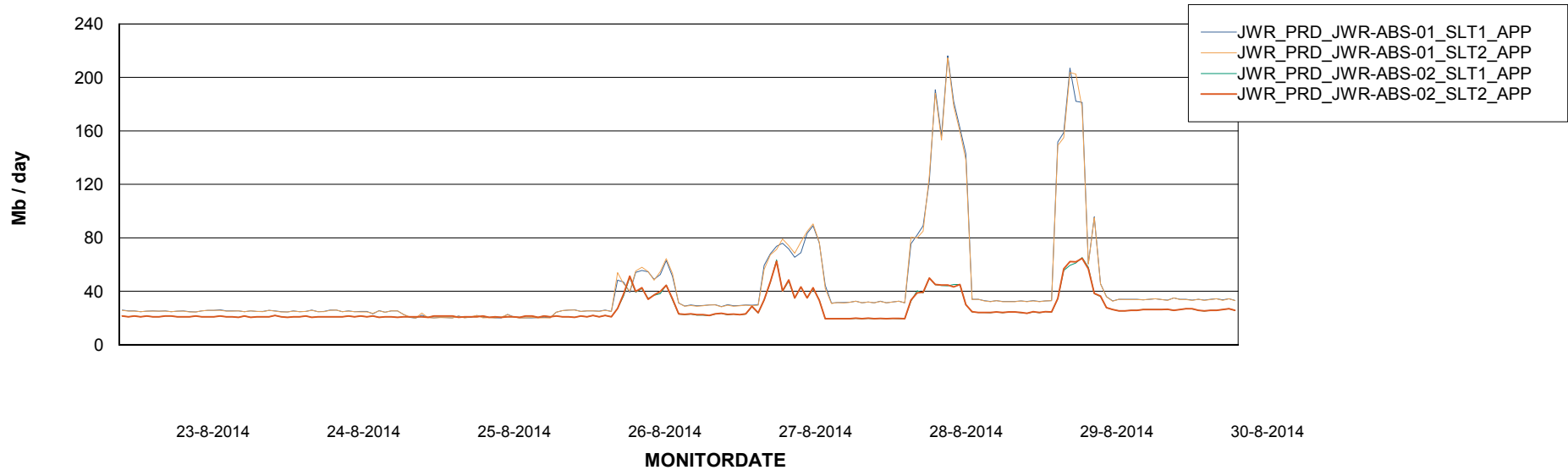


ABSolute Application Server Services

Disaster per ABS Server



Avg memory used per ABS Server Service



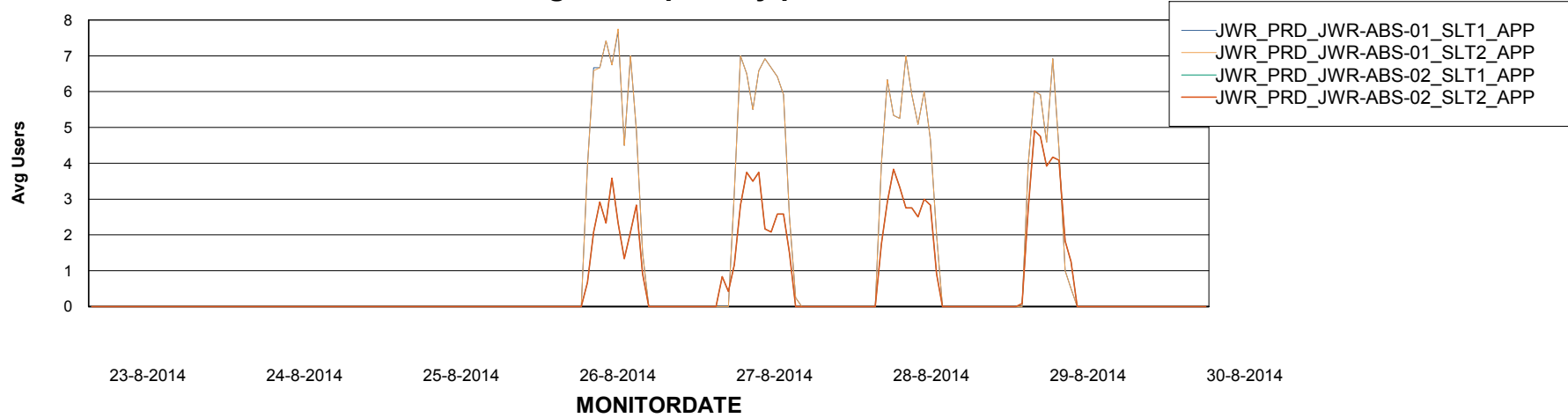
Weekly SLA Customer Report

Customer JWR Production
Database ID 43



=====
ABSolute Application Server Services
=====

Avg users per day per ABS server



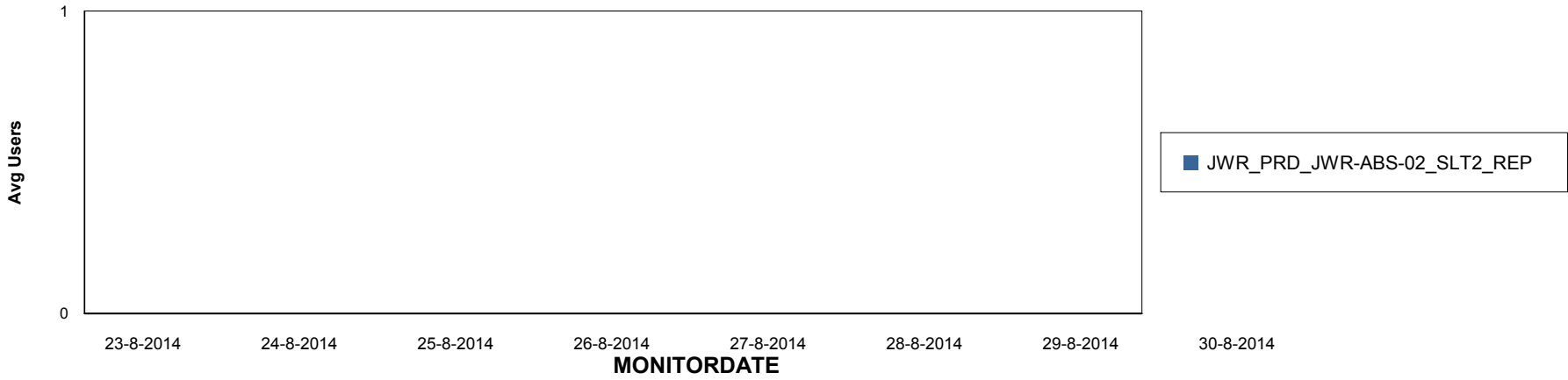
Weekly SLA Customer Report

Customer JWR Production
Database ID 43

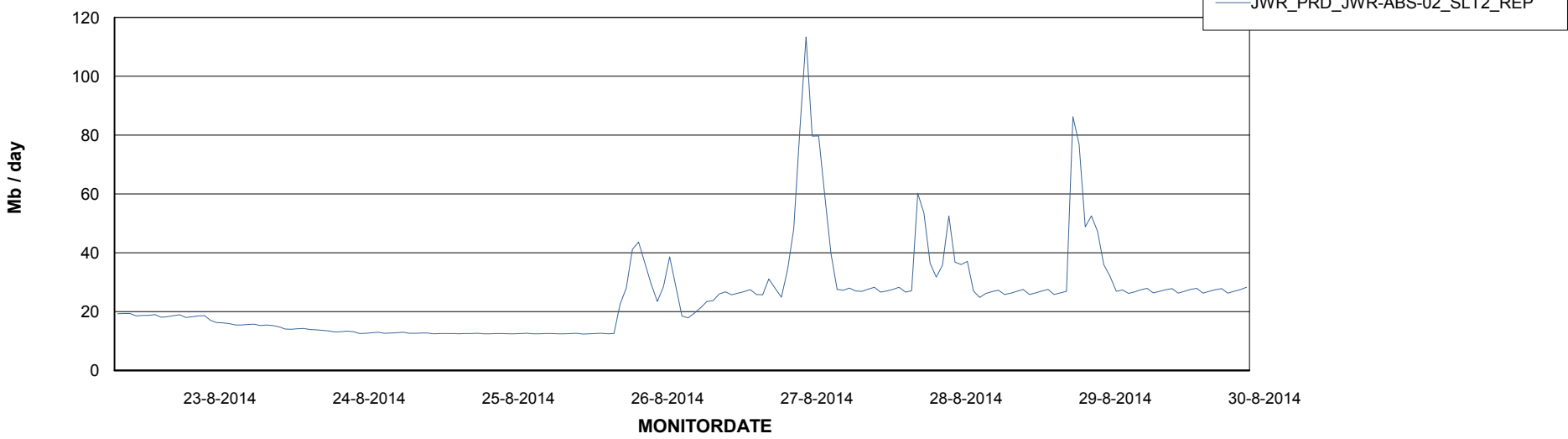


=====
ABSolute Application ReportServer Services
=====

Disaster per ReportServer



Avg memory used per ReportServer Service



Weekly SLA Customer Report

Customer JWR Production
Database ID 43



Disaster per ABS component

