

Weekly SLA Customer Report

Customer FIS_Production
 Database ID 46



=====
 HARDDISK USAGE FIS_PRD_ORACLE1
 =====

	Total disk space on C (GB)	Free disk space on C (GB)	Total disk space on L (GB)	Free disk space on L (GB)	Total disk space on O (GB)	Free disk space on O (GB)
30-8-2014	279	241	279	135	186	60
29-8-2014	279	241	279	137	186	60
28-8-2014	279	241	279	141	186	60
27-8-2014	279	241	279	142	186	60
26-8-2014	279	241	279	143	186	60
25-8-2014	279	241	279	145	186	60
24-8-2014	279	241	279	147	186	60

=====
 HARDDISK USAGE FIS_PRD_ORACLE2
 =====

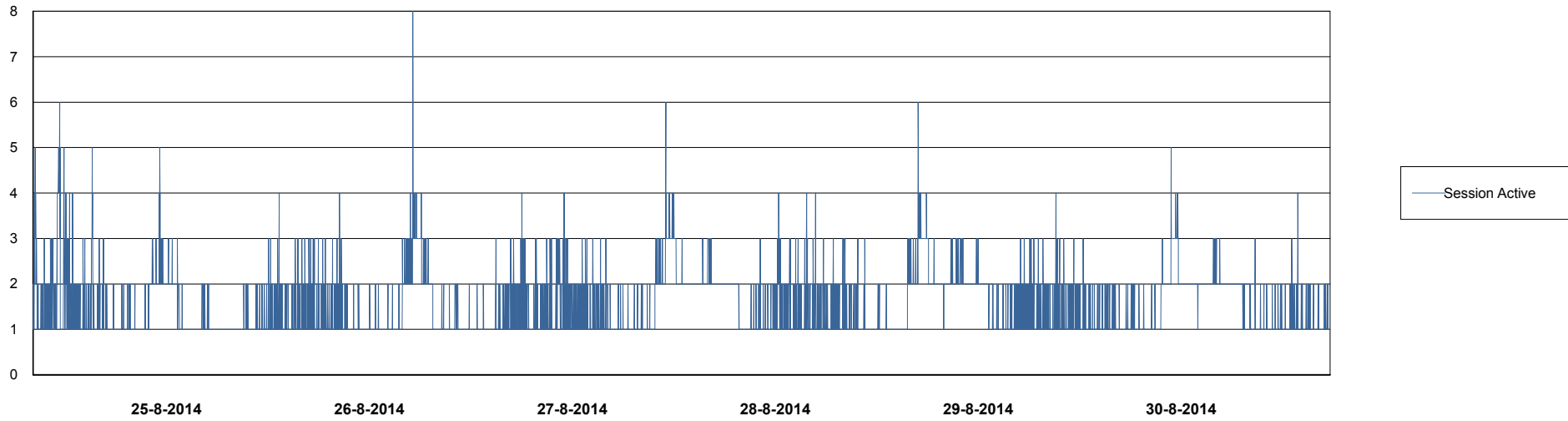
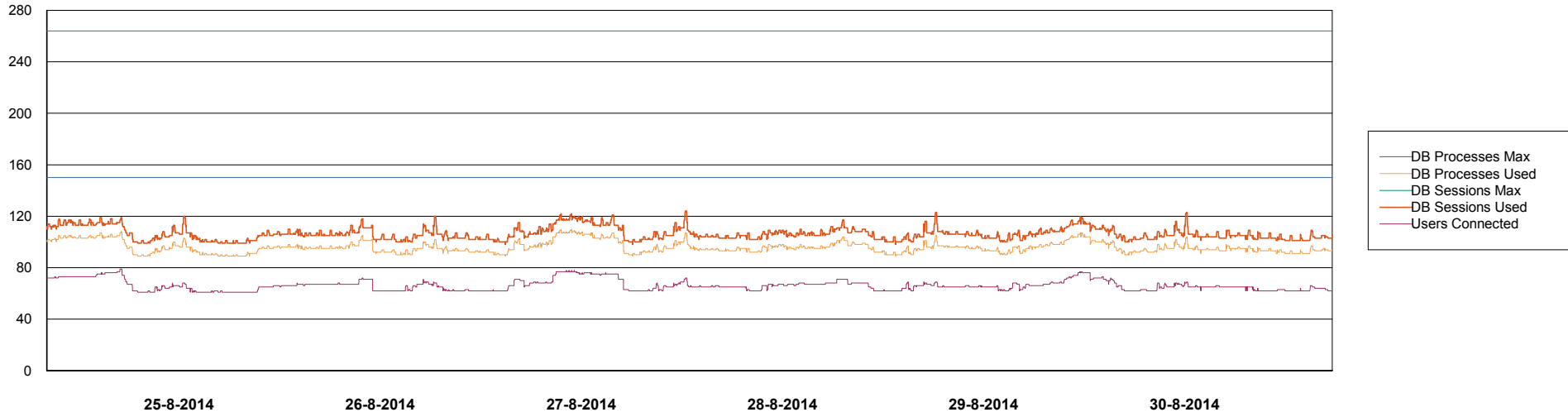
	Total disk space on C (GB)	Free disk space on C (GB)	Total disk space on L (GB)	Free disk space on L (GB)	Total disk space on O (GB)	Free disk space on O (GB)
30-8-2014	279	229	279	87	186	60
29-8-2014	279	229	279	88	186	60
28-8-2014	279	229	279	89	186	60
27-8-2014	279	229	279	91	186	60
26-8-2014	279	229	279	92	186	60
25-8-2014	279	229	279	94	186	60
24-8-2014	279	229	279	96	186	60

Weekly SLA Customer Report

Customer FIS_Production
Database ID 46



DATABASE PERFORMANCE FISDB_Production

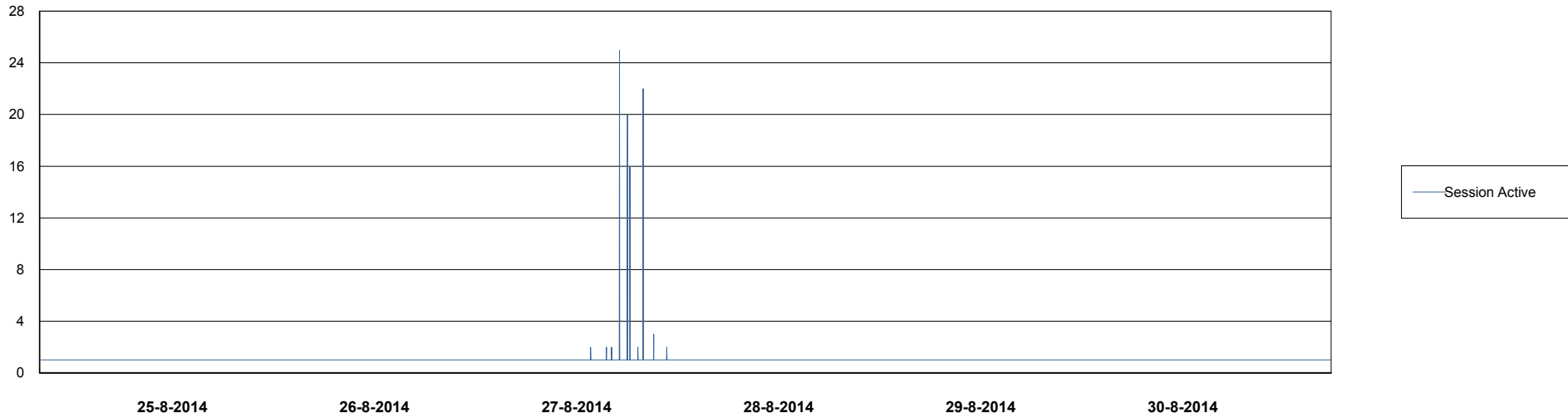
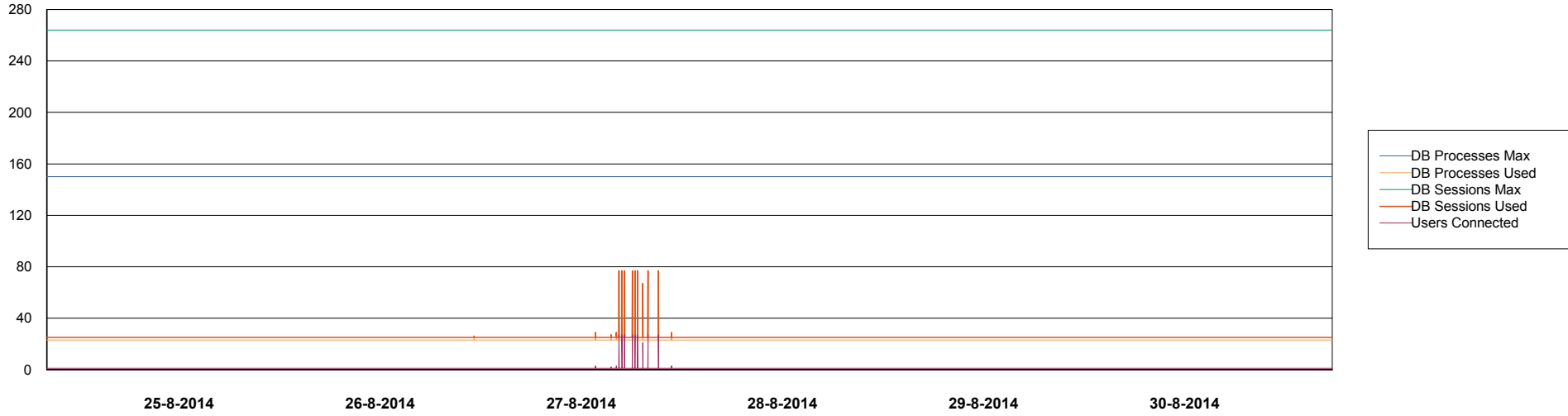


Weekly SLA Customer Report

Customer FIS_Production
Database ID 46



=====
DATABASE PERFORMANCE FISDB_Standby
=====



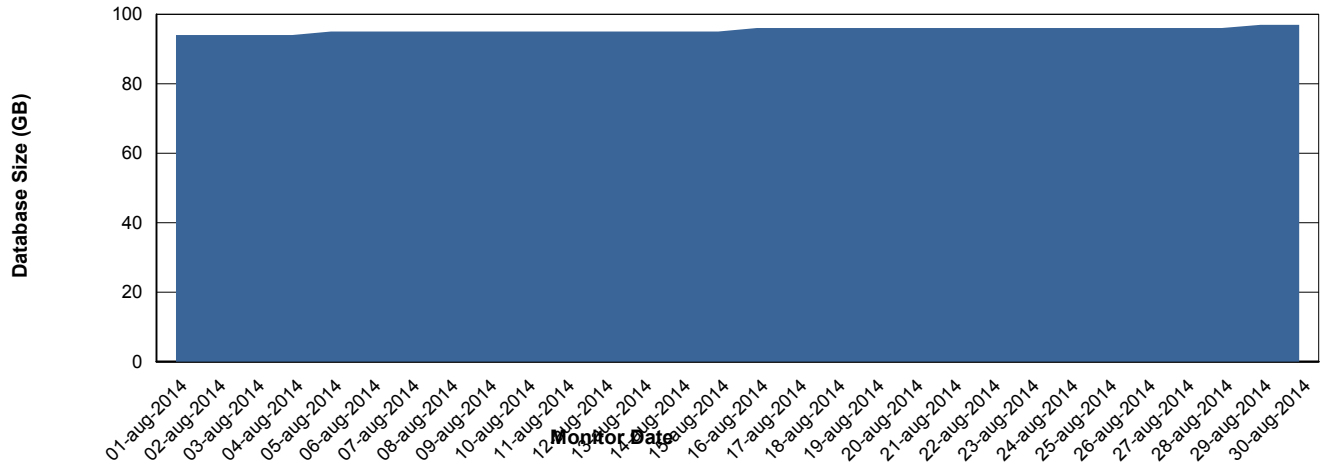
Weekly SLA Customer Report

Customer FIS_Production
 Database ID 46



=====
 DATABASE SIZE FISDB_Production
 =====

Database growth over last month



=====
 DATABASE TABLESPACES FISDB_Production
 =====

TOTAL DATABASE SIZE PER TABLESPACE

Date	Tablespace Name	Filesize (Gb)	Usedsize (Gb)	Percentage free
30-8-2014	ABSDATA	51	40	22
	INDX	61	50	18
29-8-2014	ABSDATA	51	40	22
	INDX	61	50	18
28-8-2014	ABSDATA	51	40	22
	INDX	61	50	18
27-8-2014	ABSDATA	51	40	22
	INDX	61	50	18
26-8-2014	ABSDATA	51	40	22
	INDX	61	50	18
25-8-2014	ABSDATA	51	40	22
	INDX	61	50	18
24-8-2014	ABSDATA	51	40	22
	INDX	61	50	18

