

## Weekly SLA Customer Report

Customer      BCH Production  
 Database ID    28



=====  
 HARDDISK USAGE    BCH\_PRD\_ABSAPP1  
 =====

	Total disk space on C (GB)	Free disk space on C (GB)	Total disk space on D (GB)	Free disk space on D (GB)
30-8-2014	45	9	30	30
29-8-2014	45	9	30	30
28-8-2014	45	9	30	30
27-8-2014	45	9	30	30
26-8-2014	45	9	30	30
25-8-2014	45	9	30	30
24-8-2014	45	9	30	30

=====  
 HARDDISK USAGE    BCH\_PRD\_ABSAPP2  
 =====

	Total disk space on C (GB)	Free disk space on C (GB)	Total disk space on D (GB)	Free disk space on D (GB)
30-8-2014	45	9	30	30
29-8-2014	45	9	30	30
28-8-2014	45	9	30	30
27-8-2014	45	9	30	30
26-8-2014	45	9	30	30
25-8-2014	45	9	30	30
24-8-2014	45	9	30	30

## Weekly SLA Customer Report

Customer      BCH Production  
 Database ID    28



=====  
 HARDDISK USAGE    BCH\_PRD\_ABSAPP3  
 =====

	Total disk space on C (GB)	Free disk space on C (GB)	Total disk space on D (GB)	Free disk space on D (GB)
30-8-2014	45	12	30	30
29-8-2014	45	12	30	30
28-8-2014	45	12	30	30
27-8-2014	45	12	30	30
26-8-2014	45	12	30	30
25-8-2014	45	12	30	30
24-8-2014	45	12	30	30

=====  
 HARDDISK USAGE    BCH\_PRD\_ABSWEB1  
 =====

	Used disk space on C (GB)	Total disk space on C (GB)	Free disk space on C (GB)
30-8-2014	30	45	15
29-8-2014	30	45	15
28-8-2014	30	45	15
27-8-2014	30	45	15
26-8-2014	30	45	15
25-8-2014	30	45	15
24-8-2014	30	45	15

## Weekly SLA Customer Report

Customer      BCH Production  
 Database ID    28



=====

HARDDISK USAGE    BCH\_PRD\_ABSWEB2

=====

	Used disk space on C (GB)	Total disk space on C (GB)	Free disk space on C (GB)
30-8-2014	29	45	16
29-8-2014	29	45	16
28-8-2014	29	45	16
27-8-2014	29	45	16
26-8-2014	29	45	16
25-8-2014	29	45	16
24-8-2014	29	45	16

=====

HARDDISK USAGE    BCH\_PRD\_ORCDB1

=====

	Total disk space on C (GB)	Free disk space on C (GB)	Total disk space on D (GB)	Free disk space on D (GB)
30-8-2014	278	162	278	52
29-8-2014	278	163	278	55
28-8-2014	278	163	278	58
27-8-2014	278	163	278	61
26-8-2014	278	163	278	64
25-8-2014	278	163	278	69
24-8-2014	278	163	278	72

## Weekly SLA Customer Report

Customer      BCH Production  
 Database ID    28



=====  
 HARDDISK USAGE    BCH\_PRD\_ORCDB2  
 =====

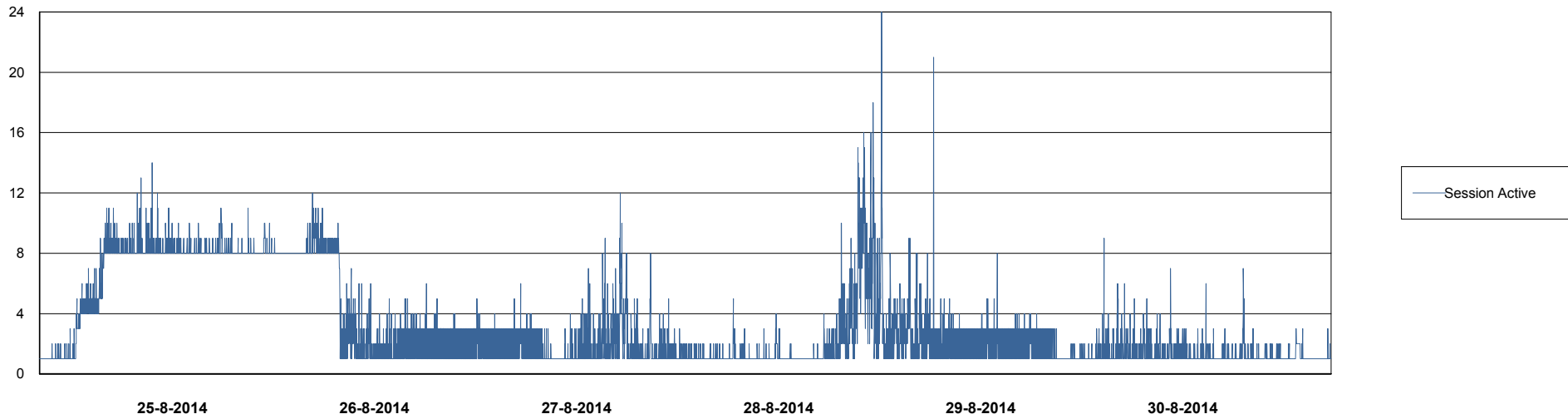
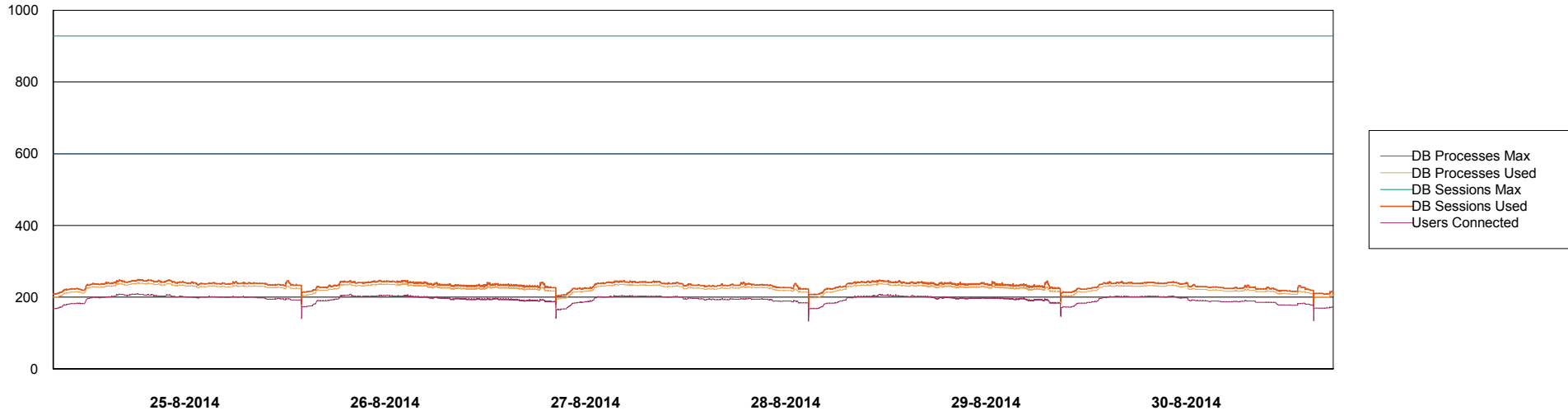
	Total disk space on C (GB)	Free disk space on C (GB)	Total disk space on D (GB)	Free disk space on D (GB)
30-8-2014	278	195	278	50
29-8-2014	278	195	278	52
28-8-2014	278	195	278	55
27-8-2014	278	195	278	58
26-8-2014	278	195	278	61
25-8-2014	278	195	278	66
24-8-2014	278	195	278	69

# Weekly SLA Customer Report

Customer BCH Production  
Database ID 28



## DATABASE PERFORMANCE BCHDB\_Production

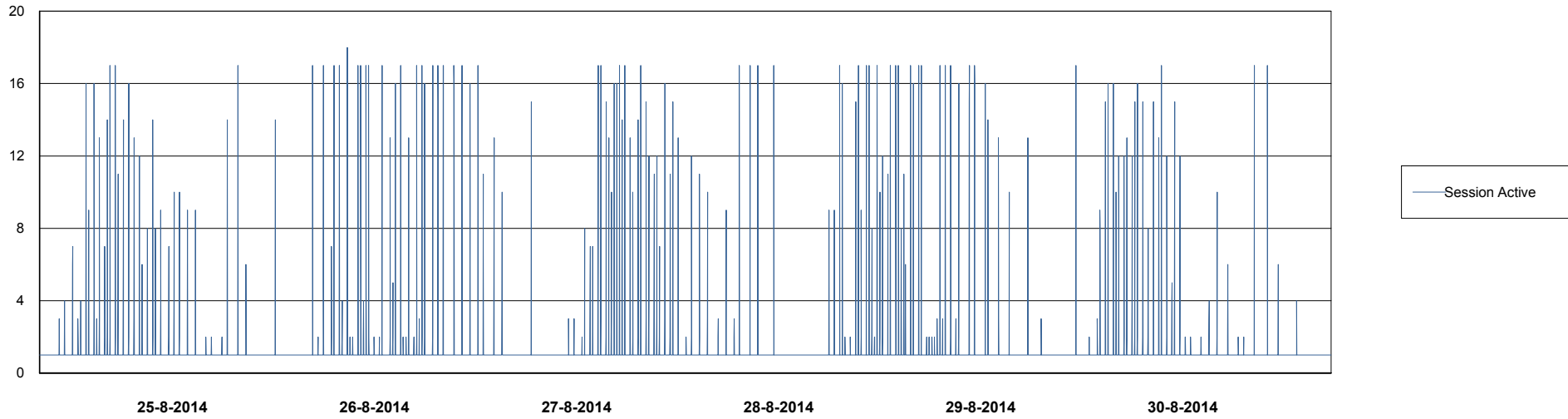
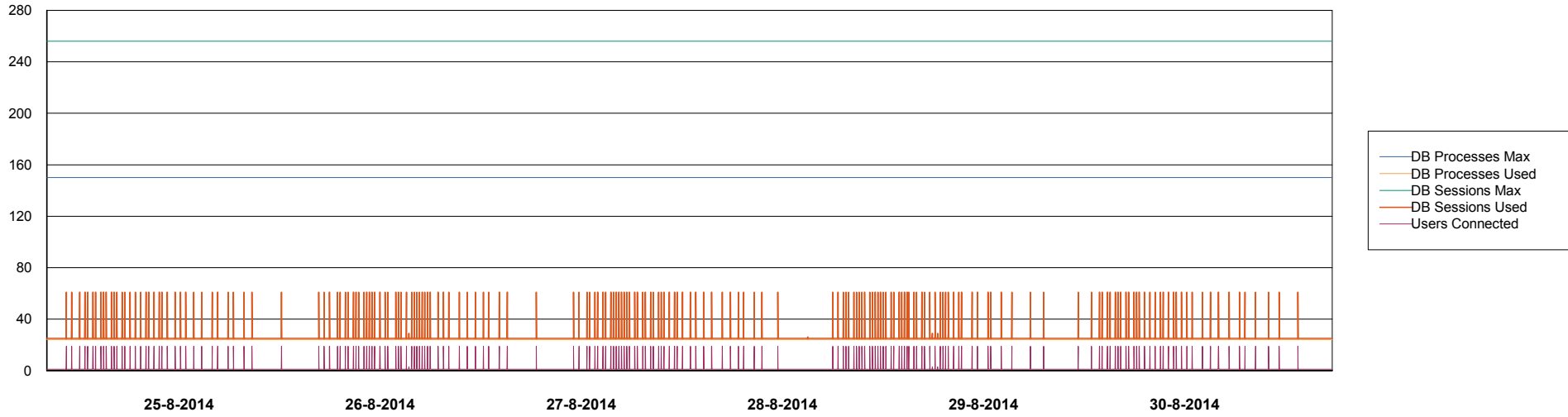


# Weekly SLA Customer Report

Customer BCH Production  
Database ID 28



DATABASE PERFORMANCE BCHDB\_Standby



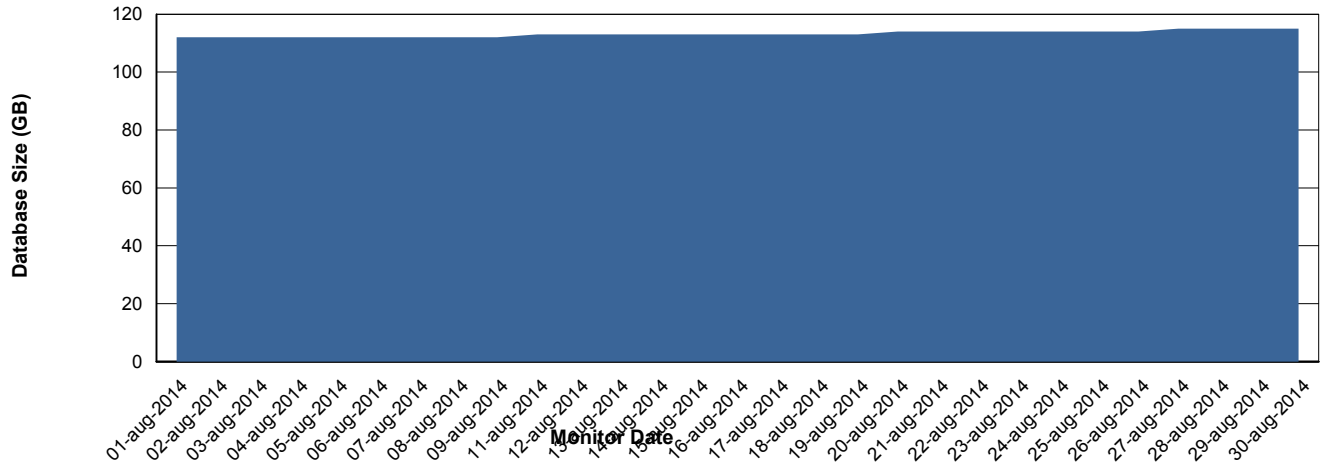
# Weekly SLA Customer Report

Customer BCH Production  
 Database ID 28



=====  
 DATABASE SIZE BCHDB\_Production  
 =====

## Database growth over last month



=====  
 DATABASE TABLESPACES BCHDB\_Production  
 =====

### TOTAL DATABASE SIZE PER TABLESPACE

Date	Tablespace Name	Filesize (Gb)	Usedsize (Gb)	Percentage free
30-8-2014	ABSDATA	26	0	100
	INDX	108	91	16
29-8-2014	ABSDATA	26	0	100
	INDX	108	91	16
28-8-2014	ABSDATA	26	0	100
	INDX	108	91	16
27-8-2014	ABSDATA	26	0	100
	INDX	108	91	16
26-8-2014	ABSDATA	26	0	100
	INDX	108	91	16
25-8-2014	ABSDATA	26	0	100
	INDX	108	91	16
24-8-2014	ABSDATA	26	0	100
	INDX	104	91	13

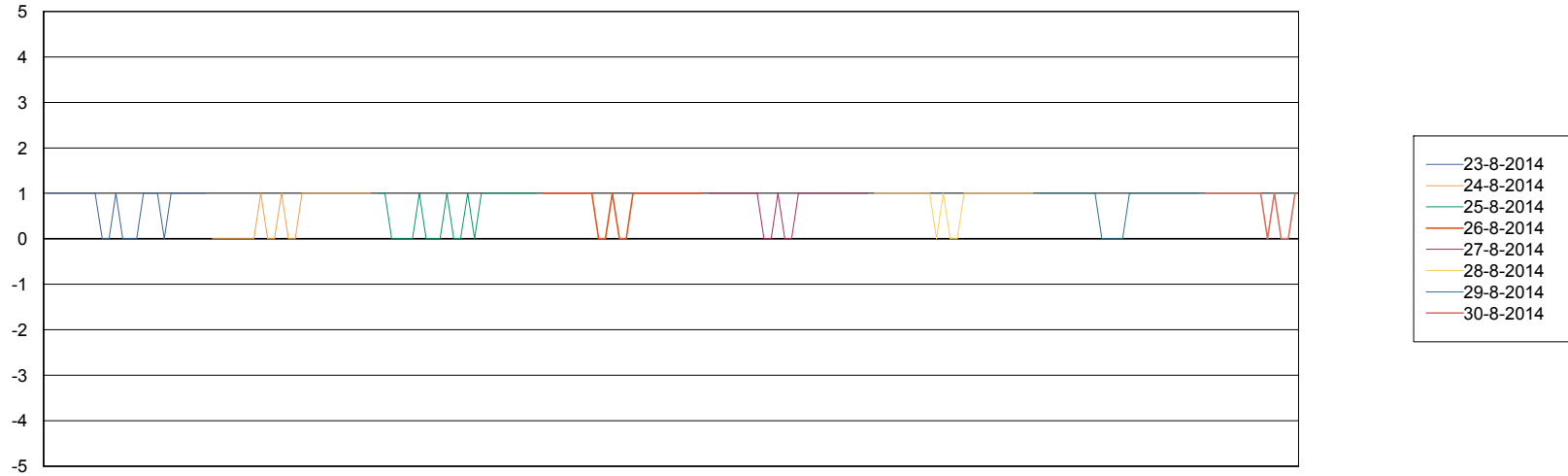
# Weekly SLA Customer Report

Customer BCH Production  
Database ID 28



=====  
STANDBY DATABASE HEALTH BCH Production  
=====

### Recovery lag for last 7 days



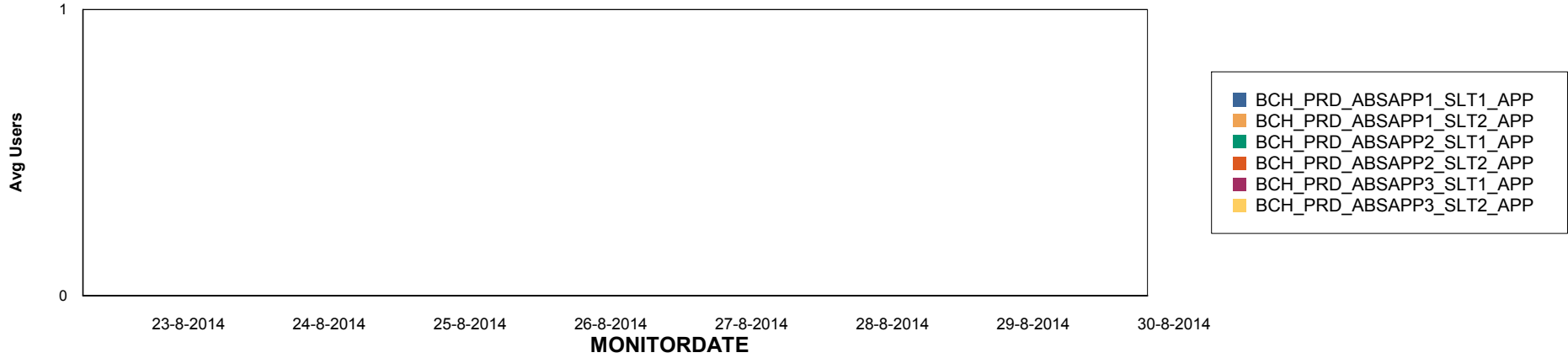
# Weekly SLA Customer Report

Customer BCH Production  
Database ID 28

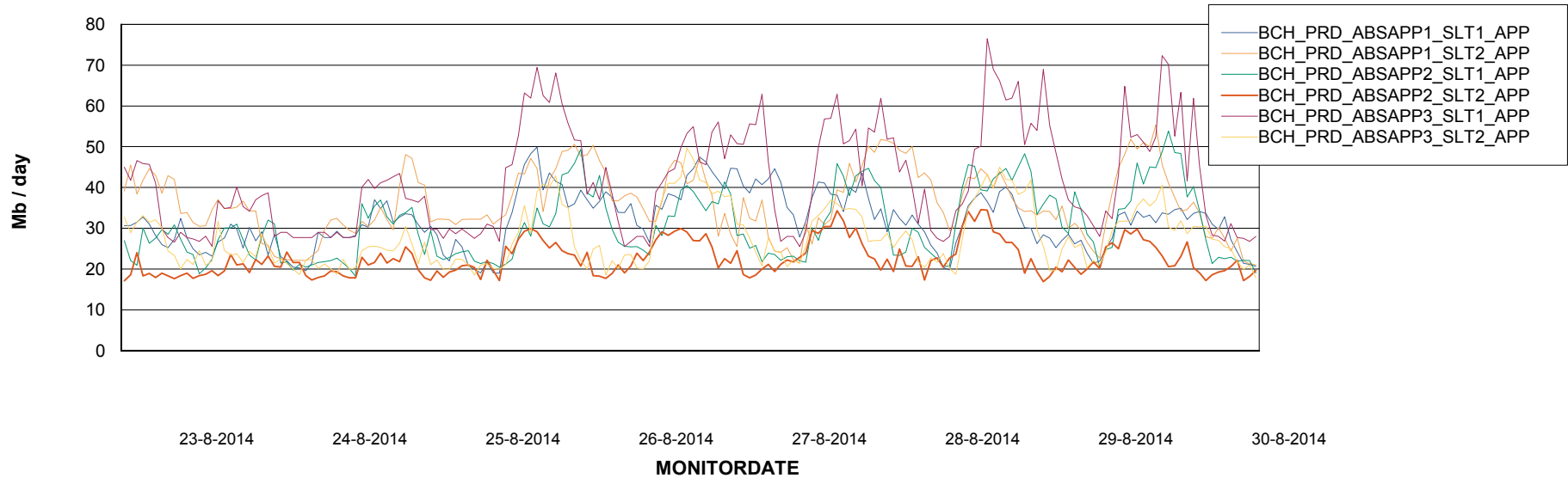


ABSSolute Application Server Services

## Disaster per ABS Server



## Avg memory used per ABS Server Service



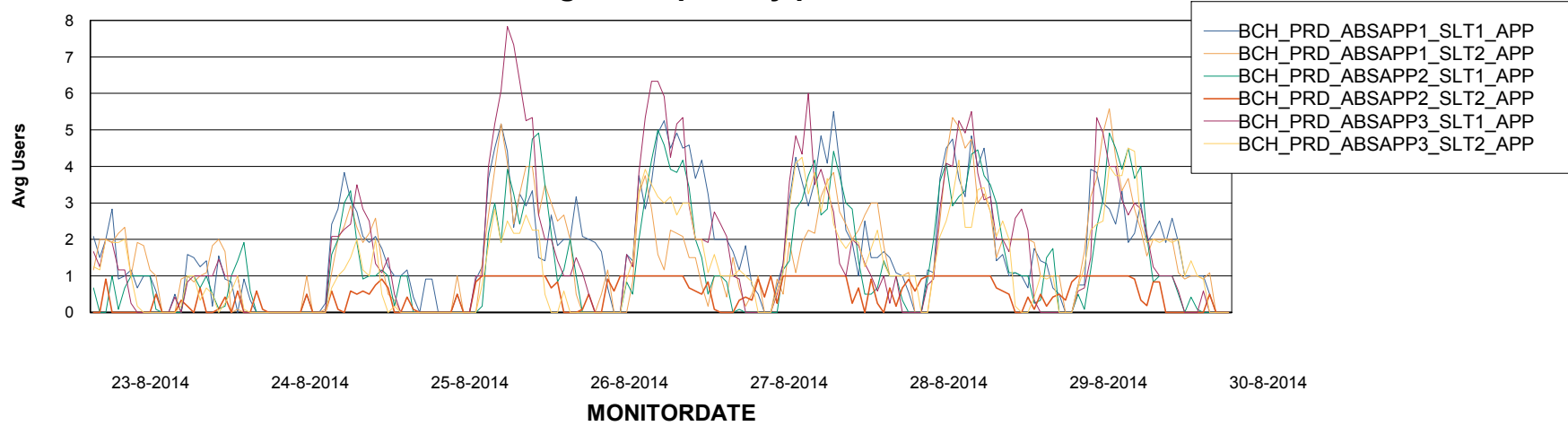
# Weekly SLA Customer Report

Customer BCH Production  
Database ID 28



=====  
ABSolute Application Server Services  
=====

### Avg users per day per ABS server



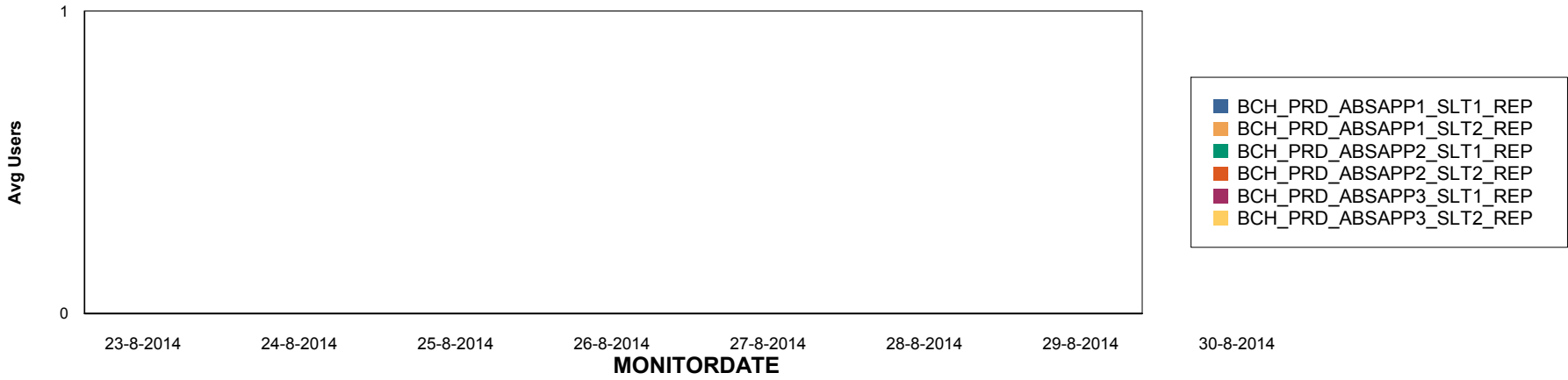
# Weekly SLA Customer Report

Customer BCH Production  
Database ID 28

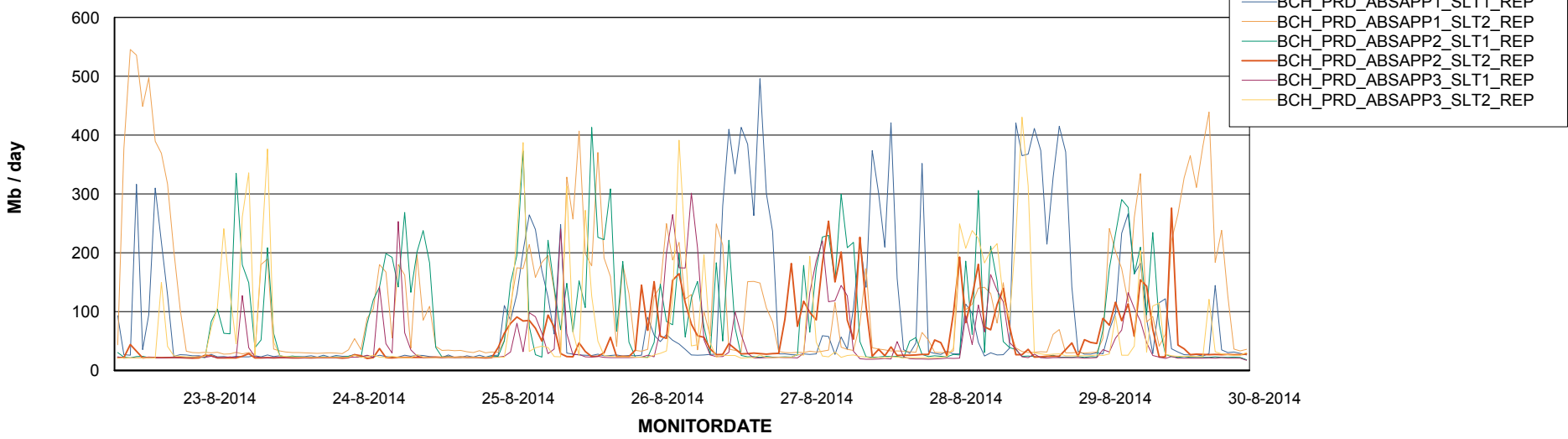


=====  
ABSolute Application ReportServer Services  
=====

## Disaster per ReportServer



## Avg memory used per ReportServer Service



# Weekly SLA Customer Report

Customer BCH Production  
Database ID 28



## Disaster per ABS component

