

## Weekly SLA Customer Report

Customer AUJ\_Production  
 Database ID 41



=====  
 HARDDISK USAGE AUJDB\_BI  
 =====

	Used disk space on / (GB)	Total disk space on / (GB)
30-8-2014	5	6
29-8-2014	5	6
28-8-2014	5	6
27-8-2014	5	6
26-8-2014	5	6
25-8-2014	5	6
24-8-2014	5	6

=====  
 HARDDISK USAGE AUJ\_PRD\_ORACLE1  
 =====

	Used disk space on \$1 (GB)	Total disk space on \$1 (GB)	Free disk space on \$1 (GB)
30-8-2014	109	282	67
29-8-2014	110	290	67
28-8-2014	111	290	67
27-8-2014	112	290	67
26-8-2014	112	290	67
25-8-2014	112	290	67
24-8-2014	112	290	67

## Weekly SLA Customer Report

Customer     AUJ\_Production  
 Database ID    41



=====  
 HARDDISK USAGE    AUJ\_PRD\_ORACLE2  
 =====

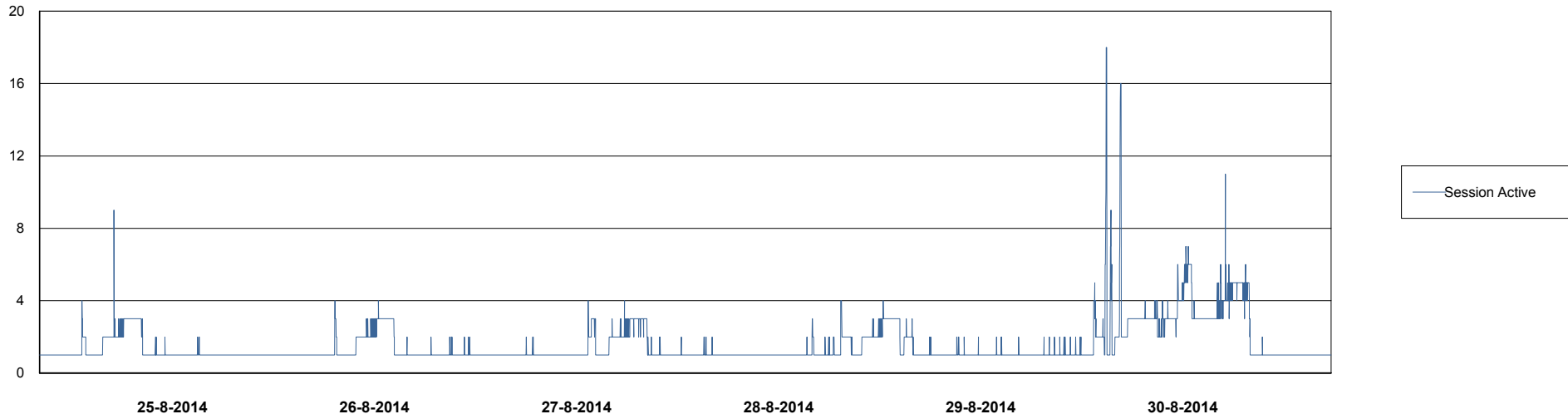
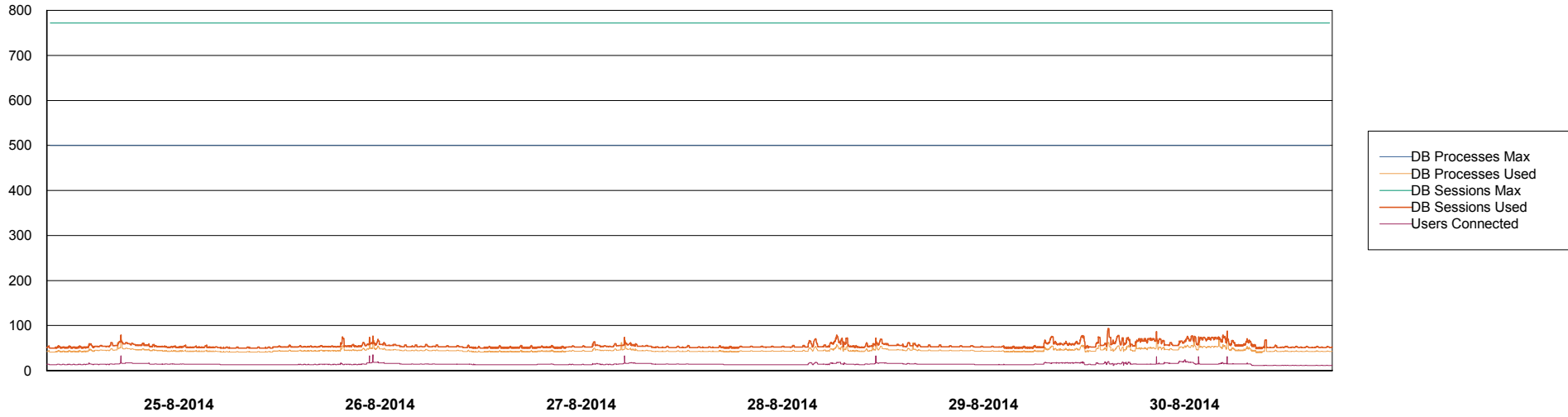
	Used disk space on \$1 (GB)	Total disk space on \$1 (GB)	Free disk space on \$1 (GB)
30-8-2014	6	109	98
29-8-2014	6	109	98
28-8-2014	6	109	98
27-8-2014	6	109	98
26-8-2014	6	109	98
25-8-2014	6	109	98
24-8-2014	6	109	98

# Weekly SLA Customer Report

Customer AUJ\_Production  
Database ID 41



DATABASE PERFORMANCE AUJDB\_BI

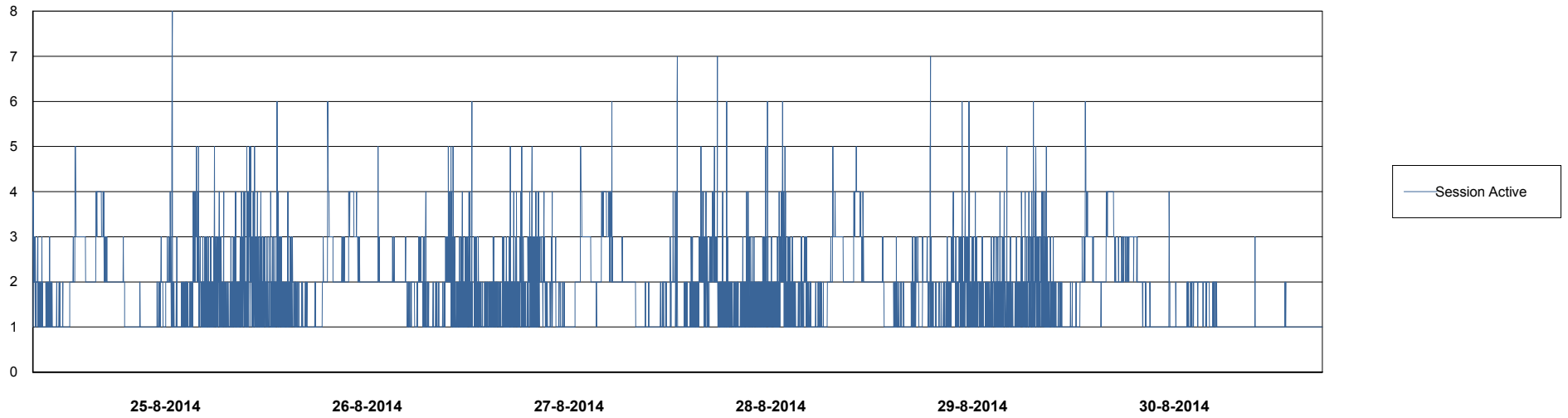
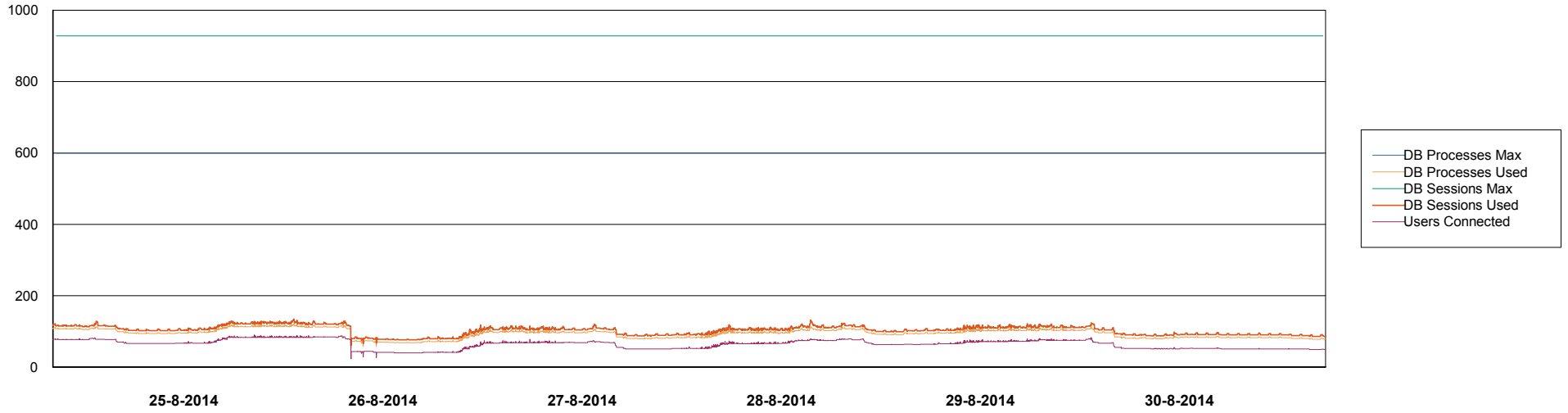


# Weekly SLA Customer Report

Customer AUJ\_Production  
Database ID 41



## DATABASE PERFORMANCE AUJDB\_Production



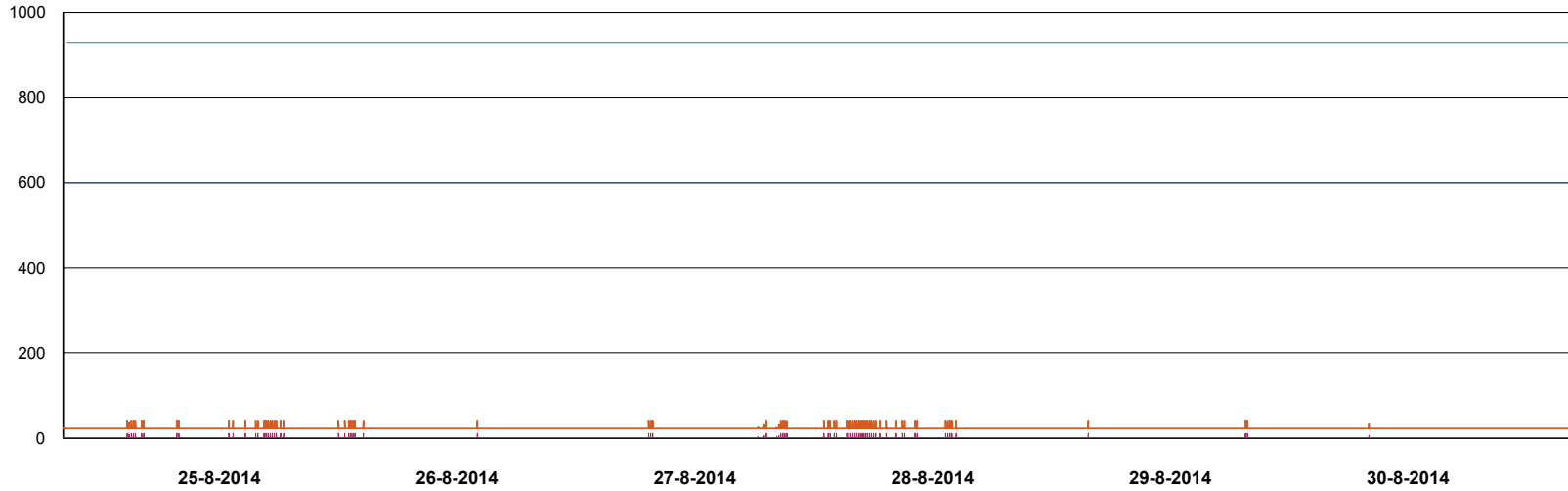
# Weekly SLA Customer Report

Customer AUJ\_Production  
Database ID 41

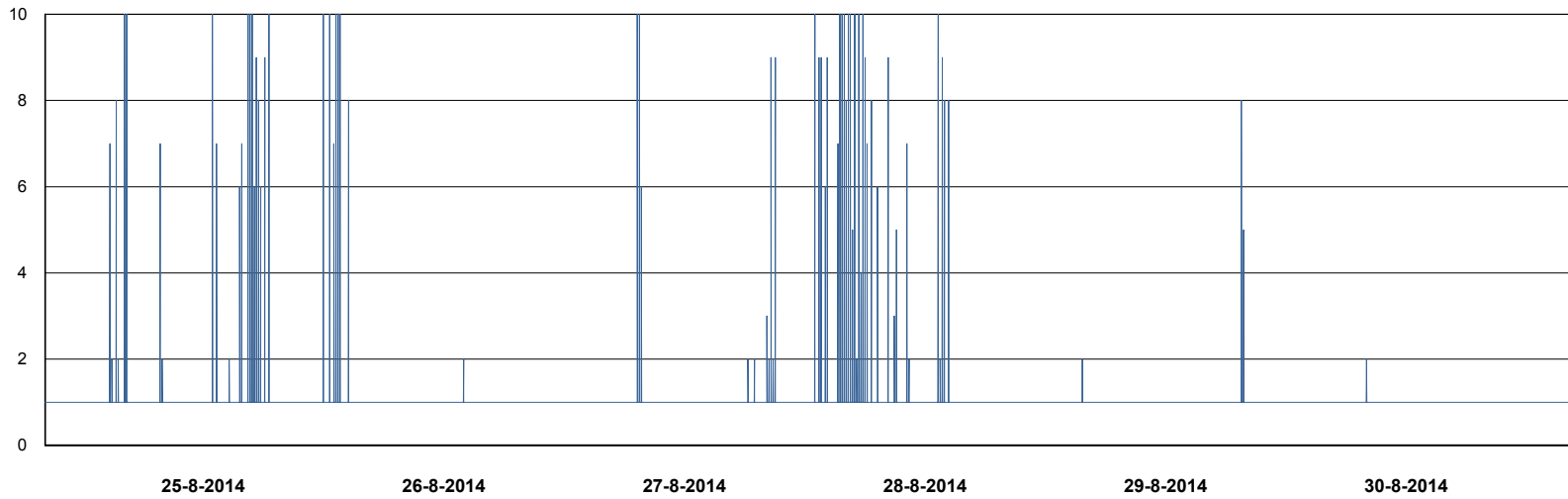


## DATABASE PERFORMANCE

AUJDB\_Standby



- DB Processes Max
- DB Processes Used
- DB Sessions Max
- DB Sessions Used
- Users Connected



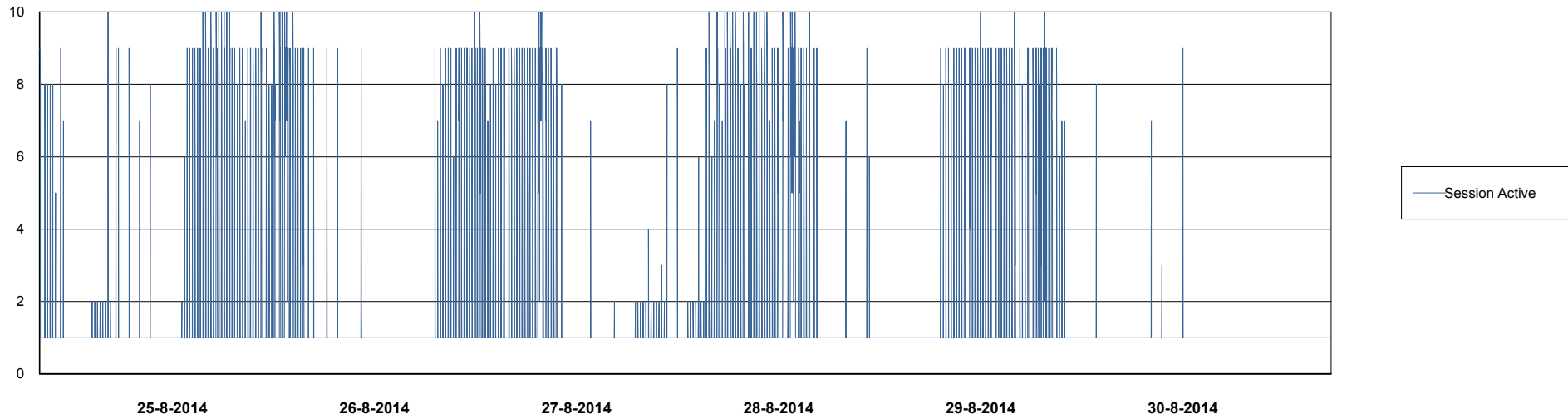
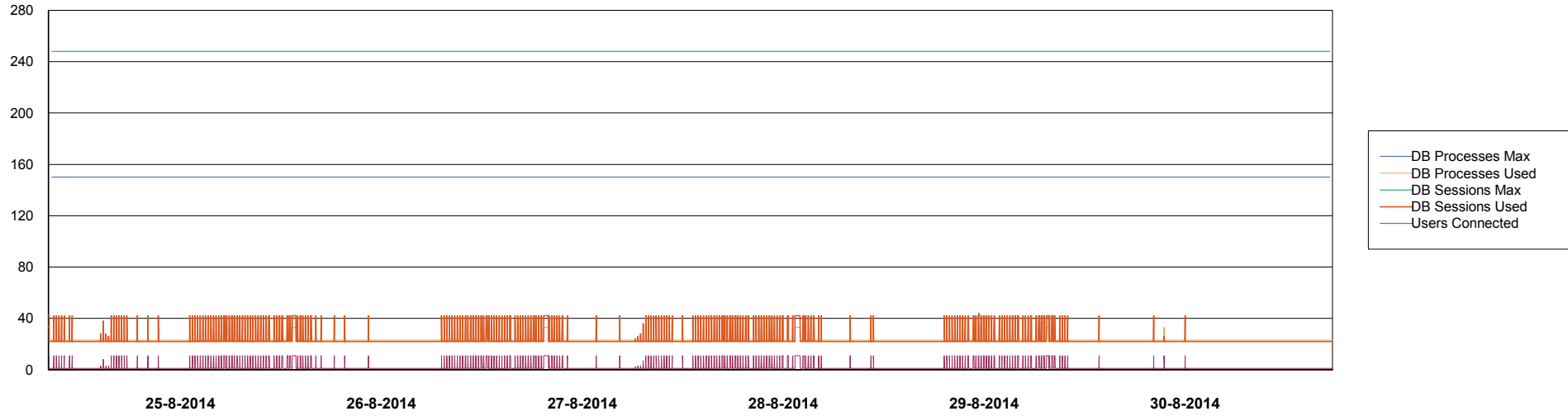
- Session Active

# Weekly SLA Customer Report

Customer AUJ\_Production  
Database ID 41



DATABASE PERFORMANCE AUJDB3\_Standby



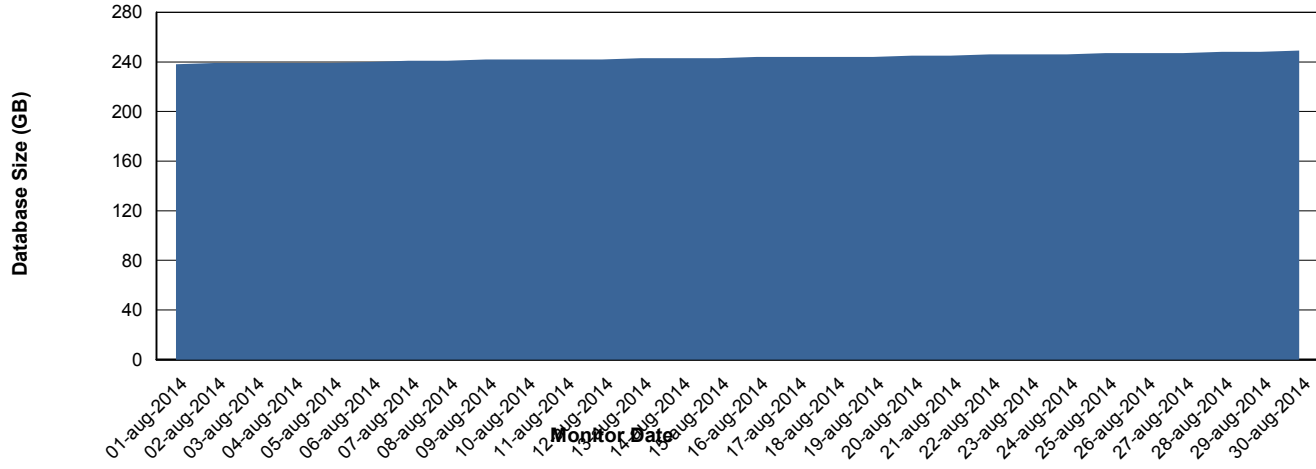
# Weekly SLA Customer Report

Customer AUJ\_Production  
Database ID 41



=====  
DATABASE SIZE AUJDB\_Production  
=====

## Database growth over last month



# Weekly SLA Customer Report

Customer AUJ\_Production  
 Database ID 41



=====  
 DATABASE TABLESPACES AUJDB\_BI  
 =====

TOTAL DATABASE SIZE PER TABLESPACE

Date	Tablespace Name	Filesize (Gb)	Usedsize (Gb)	Percentage free
30-8-2014	ABSDATA	93	81	13
	INDX	154	135	12
29-8-2014	ABSDATA	93	81	13
	INDX	154	135	12
28-8-2014	ABSDATA	93	80	14
	INDX	154	134	13
27-8-2014	ABSDATA	93	80	14
	INDX	154	134	13
26-8-2014	ABSDATA	93	80	14
	INDX	154	134	13
25-8-2014	ABSDATA	93	80	14
	INDX	154	134	13
24-8-2014	ABSDATA	93	80	14
	INDX	154	134	13

# Weekly SLA Customer Report

Customer AUJ\_Production  
 Database ID 41



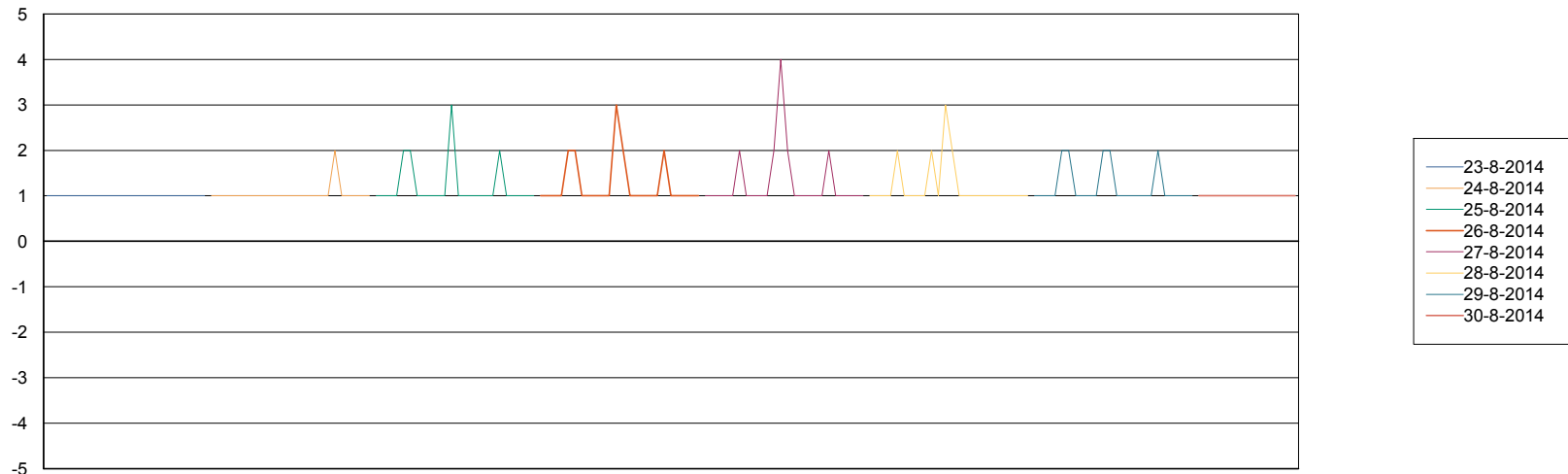
=====  
 DATABASE TABLESPACES AUJDB\_Production  
 =====

TOTAL DATABASE SIZE PER TABLESPACE

Date	Tablespace Name	Filesize (Gb)	Usedsize (Gb)	Percentage free
30-8-2014	ABSDATA	129	108	16
	INDX	157	139	11
29-8-2014	ABSDATA	129	108	16
	INDX	157	139	11
28-8-2014	ABSDATA	129	108	16
	INDX	157	138	12
27-8-2014	ABSDATA	129	108	16
	INDX	157	138	12
26-8-2014	ABSDATA	129	108	16
	INDX	157	138	12
25-8-2014	ABSDATA	129	108	16
	INDX	157	137	13
24-8-2014	ABSDATA	129	107	17
	INDX	157	137	13

=====  
 STANDBY DATABASE HEALTH AUJ\_Production  
 =====

Recovery lag for last 7 days



# Weekly SLA Customer Report

---

Customer AUJ\_Production  
Database ID 41

