

# Weekly SLA Customer Report

Customer PCO Production  
 Database ID 44



=====  
 HARDDISK USAGE PCO\_PRD\_ORACLE1  
 =====

	Total disk space on C (GB)	Free disk space on C (GB)	Total disk space on D (GB)	Free disk space on D (GB)
23-8-2014	279	218	838	374
22-8-2014	279	218	838	376
21-8-2014	279	218	838	379
20-8-2014	279	218	838	382
19-8-2014	279	218	838	385
18-8-2014	279	218	838	388
17-8-2014	279	218	838	389

=====  
 HARDDISK USAGE PCO\_PRD\_ORACLE2  
 =====

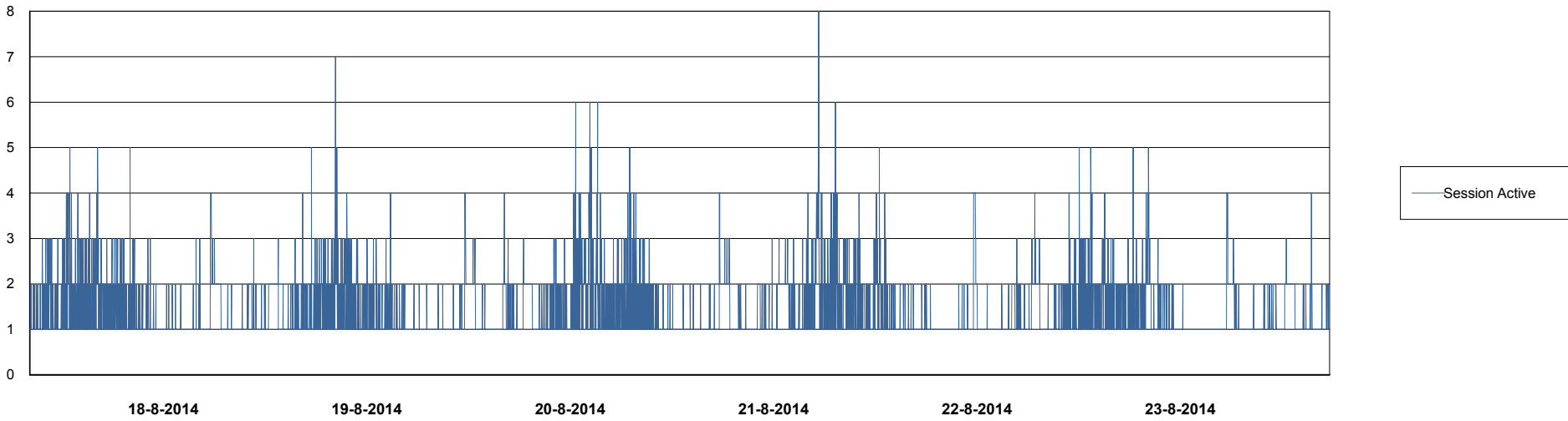
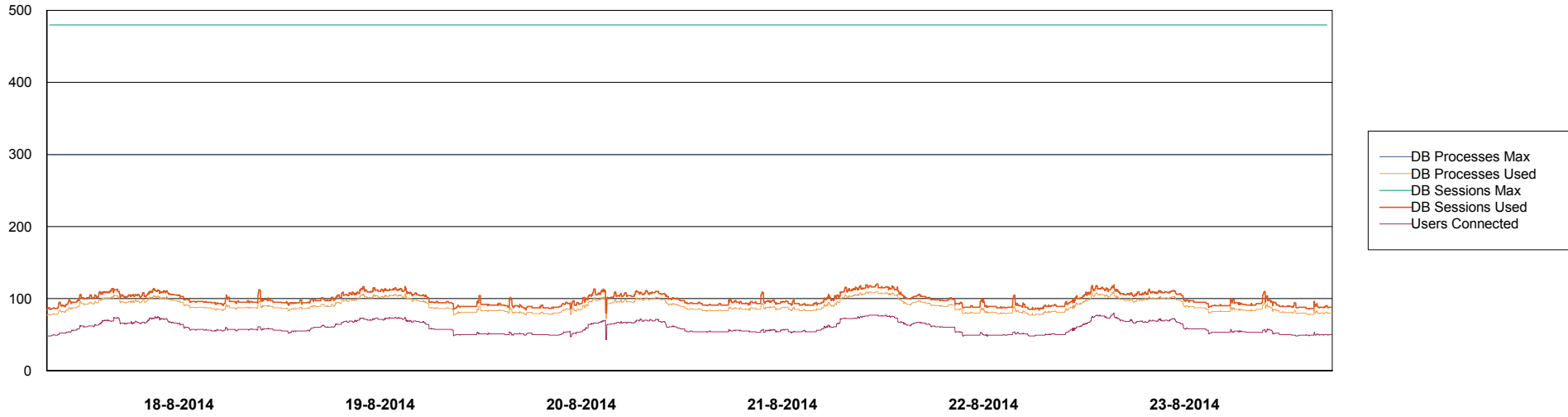
	Total disk space on C (GB)	Free disk space on C (GB)	Total disk space on D (GB)	Free disk space on D (GB)
23-8-2014	279	225	838	532
22-8-2014	279	224	838	534
21-8-2014	279	225	838	537
20-8-2014	279	225	838	540
19-8-2014	279	225	838	542
18-8-2014	279	225	838	545
17-8-2014	279	225	838	547

# Weekly SLA Customer Report

Customer PCO Production  
Database ID 44



DATABASE PERFORMANCE PCODB\_Production

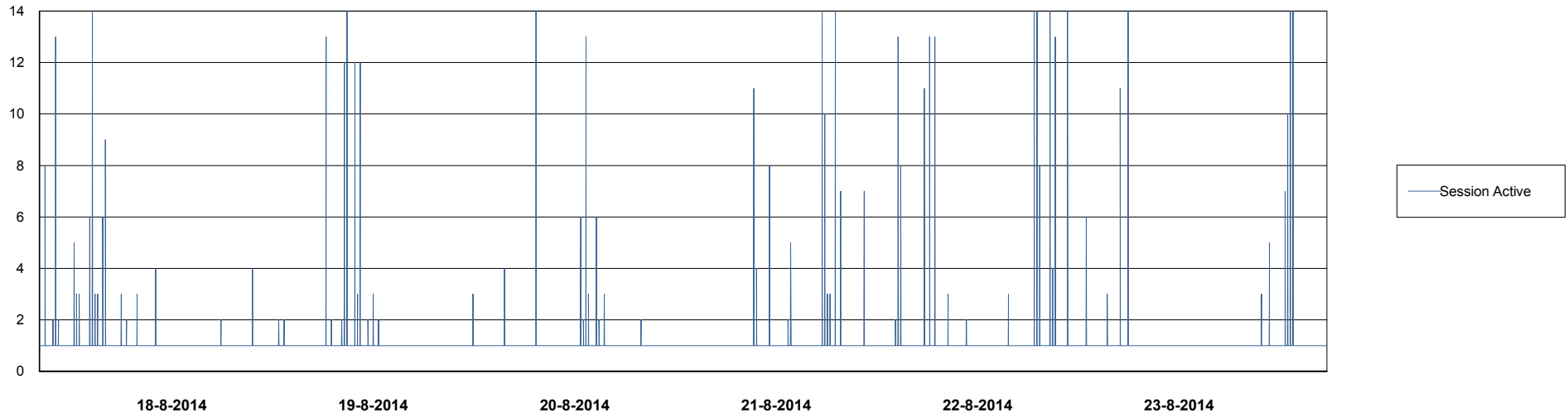
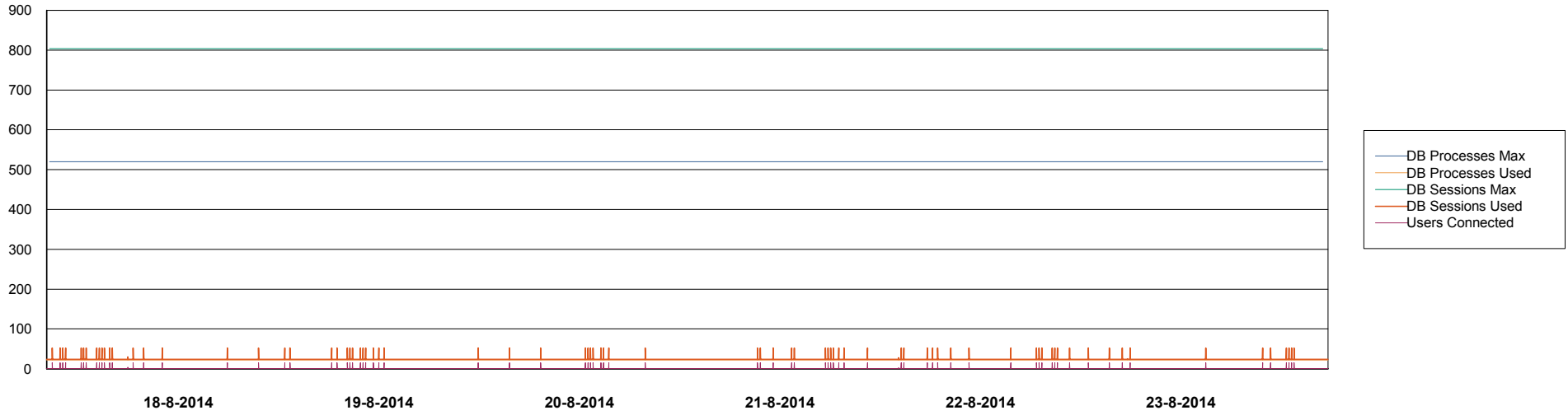


# Weekly SLA Customer Report

Customer PCO Production  
Database ID 44



## DATABASE PERFORMANCE PCODB\_Standby



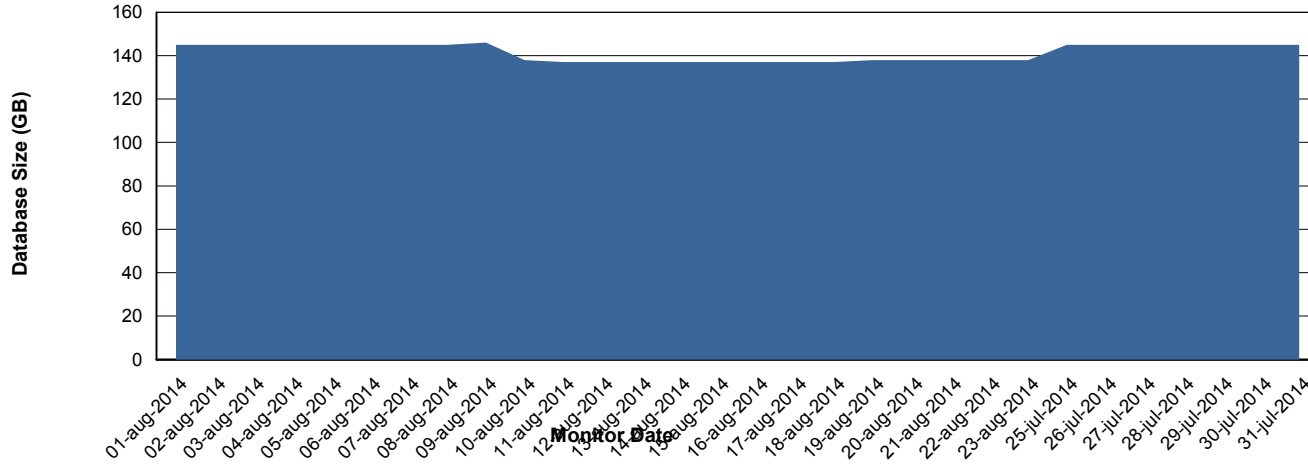
# Weekly SLA Customer Report

Customer PCO Production  
 Database ID 44



=====  
 DATABASE SIZE PCODB\_Production  
 =====

## Database growth over last month



=====  
 DATABASE TABLESPACES PCODB\_Production  
 =====

### TOTAL DATABASE SIZE PER TABLESPACE

Date	Tablespace Name	Filesize (Gb)	Usedsize (Gb)	Percentage free
23-8-2014	ABSDATA	72	57	21
	INDX	99	77	22
22-8-2014	ABSDATA	72	57	21
	INDX	99	77	22
21-8-2014	ABSDATA	72	57	21
	INDX	99	77	22
20-8-2014	ABSDATA	72	57	21
	INDX	99	76	23
19-8-2014	ABSDATA	72	57	21
	INDX	99	76	23
18-8-2014	ABSDATA	72	57	21
	INDX	99	76	23
17-8-2014	ABSDATA	72	56	22
	INDX	99	76	23

# Weekly SLA Customer Report

Customer PCO Production  
Database ID 44



=====  
STANDBY DATABASE HEALTH PCO Production  
=====

### Recovery lag for last 7 days

