

Weekly SLA Customer Report

Customer NIX_Production
 Database ID 51



=====
 HARDDISK USAGE NIX_PRD_ABSAPP1
 =====

	Total disk space on C (GB)	Free disk space on C (GB)
23-8-2014	136	87
22-8-2014	136	87
21-8-2014	136	87
20-8-2014	136	87
19-8-2014	136	87
18-8-2014	136	87
17-8-2014	136	87

=====
 HARDDISK USAGE NIX_PRD_ABSWEB1
 =====

	Total disk space on C (GB)	Free disk space on C (GB)
23-8-2014	930	725
22-8-2014	930	728
21-8-2014	930	728
20-8-2014	930	728
19-8-2014	930	728
18-8-2014	930	728
17-8-2014	930	728

Weekly SLA Customer Report

Customer NIX_Production
 Database ID 51



=====
 HARDDISK USAGE NIX_PRD_ORACLE_B11
 =====

	Total disk space on C (GB)	Free disk space on C (GB)	Total disk space on D (GB)	Free disk space on D (GB)	Total disk space on E (GB)	Free disk space on E (GB)
23-8-2014	40	7	279	180	236	170
22-8-2014	40	7	279	180	236	170
21-8-2014	40	7	279	180	236	170
20-8-2014	40	7	279	180	236	170
19-8-2014	40	7	279	180	236	170
18-8-2014	40	7	279	180	236	170
17-8-2014	40	7	279	180	236	170

=====
 HARDDISK USAGE NIX_PRD_ORCDB1
 =====

	Total disk space on C (GB)	Free disk space on C (GB)	Total disk space on D (GB)	Free disk space on D (GB)	Total disk space on E (GB)	Free disk space on E (GB)
23-8-2014	136	21	136	35	136	101
22-8-2014	136	21	136	35	136	102
21-8-2014	136	21	136	35	136	102
20-8-2014	136	21	136	35	136	102
19-8-2014	136	21	136	36	136	102
18-8-2014	136	21	136	36	136	102
17-8-2014	136	21	136	36	136	102

Weekly SLA Customer Report

Customer NIX_Production
 Database ID 51



=====
 HARDDISK USAGE NIX_PRD_ORCDB2
 =====

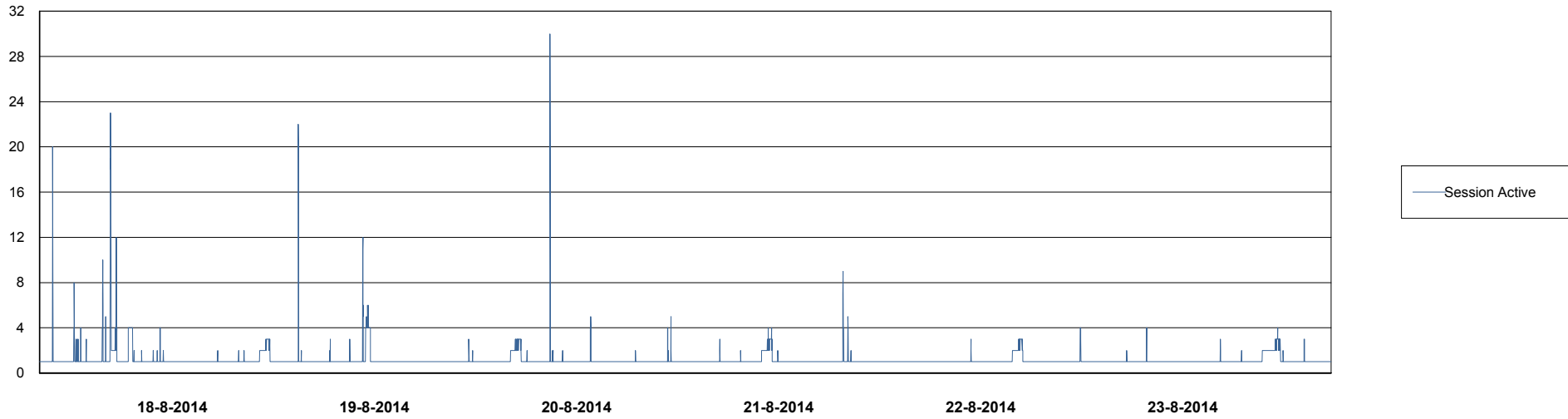
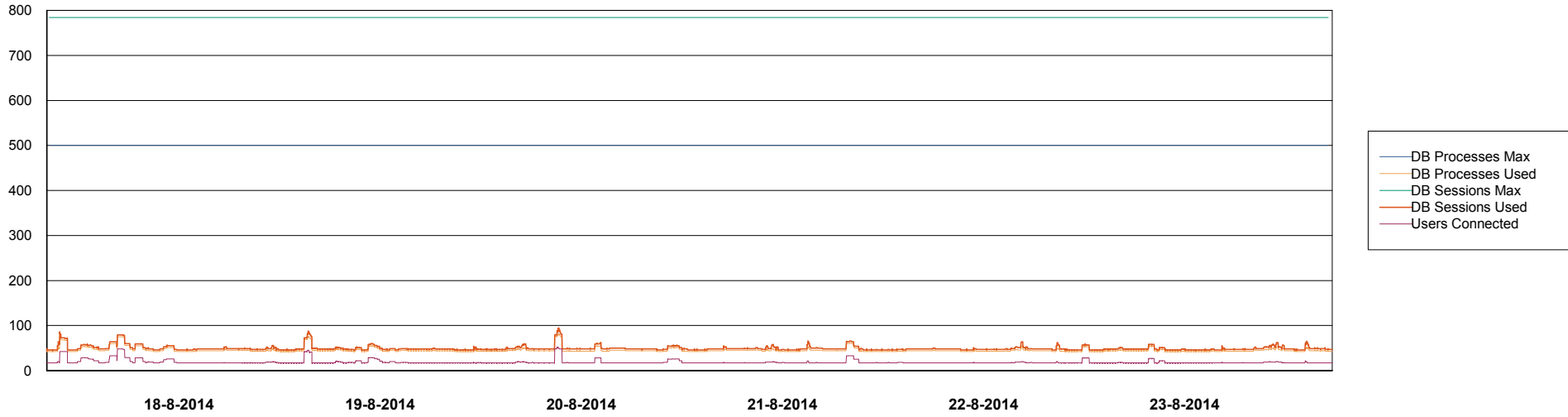
	Total disk space on C (GB)	Free disk space on C (GB)	Total disk space on D (GB)	Free disk space on D (GB)	Total disk space on E (GB)	Free disk space on E (GB)
23-8-2014	279	48	279	49	279	119
22-8-2014	279	43	279	49	279	141
21-8-2014	279	48	279	49	279	84
20-8-2014	279	48	279	49	279	90
19-8-2014	279	48	279	49	279	117
18-8-2014	279	48	279	49	279	72
17-8-2014	279	48	279	49	279	88

Weekly SLA Customer Report

Customer NIX_Production
Database ID 51



=====
DATABASE PERFORMANCE NIXDB_BI
=====



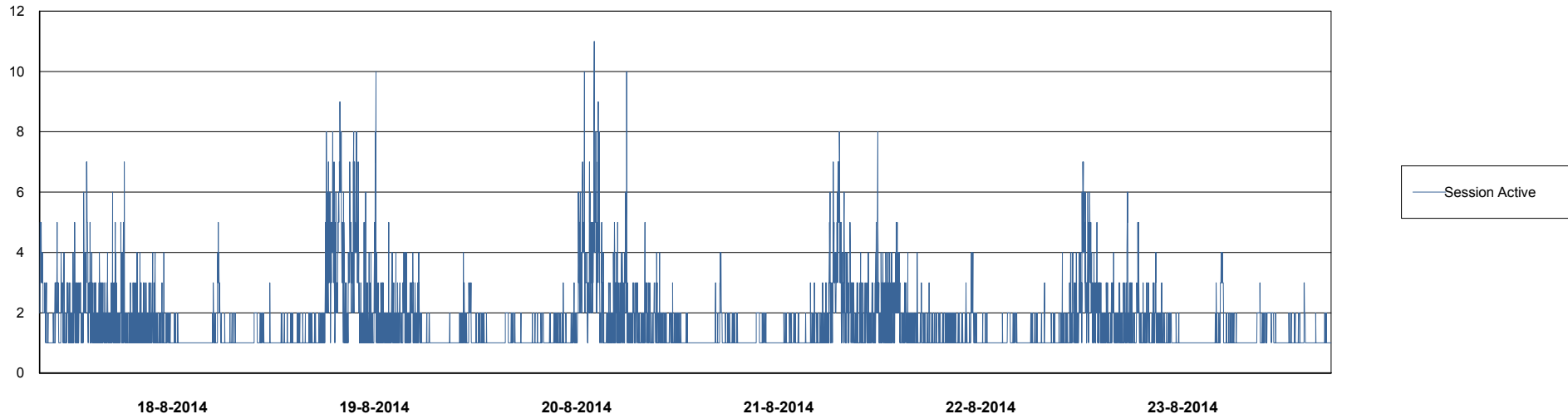
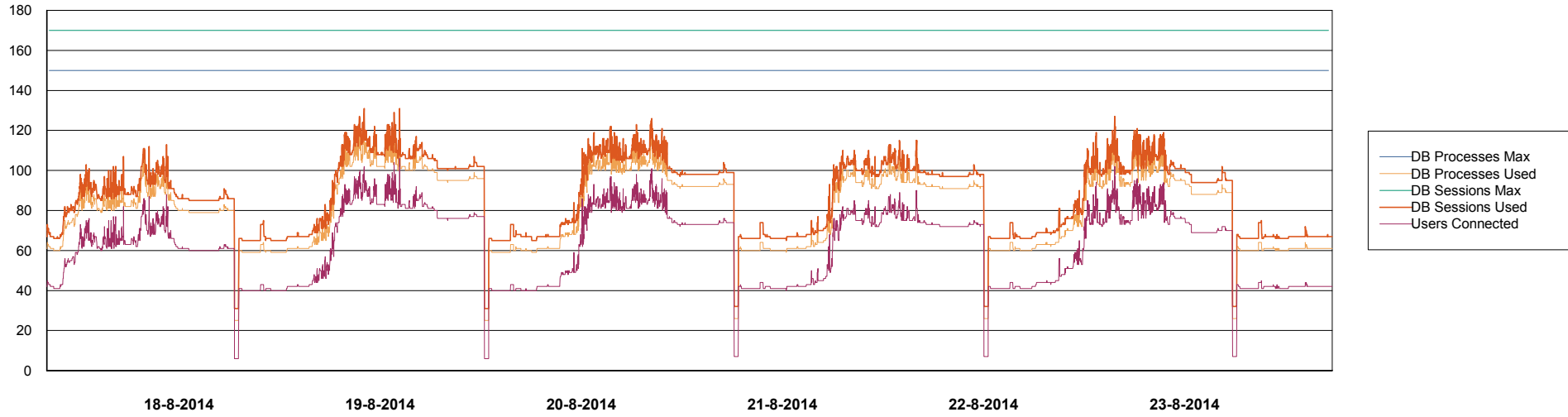
Weekly SLA Customer Report

Customer NIX_Production
Database ID 51



DATABASE PERFORMANCE

NIXDB_Production

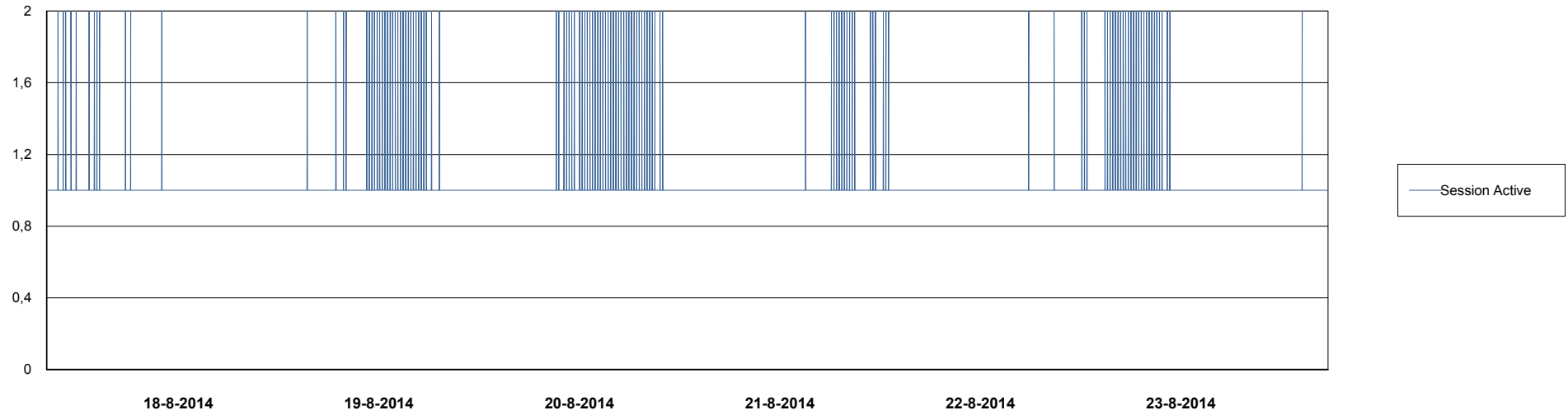
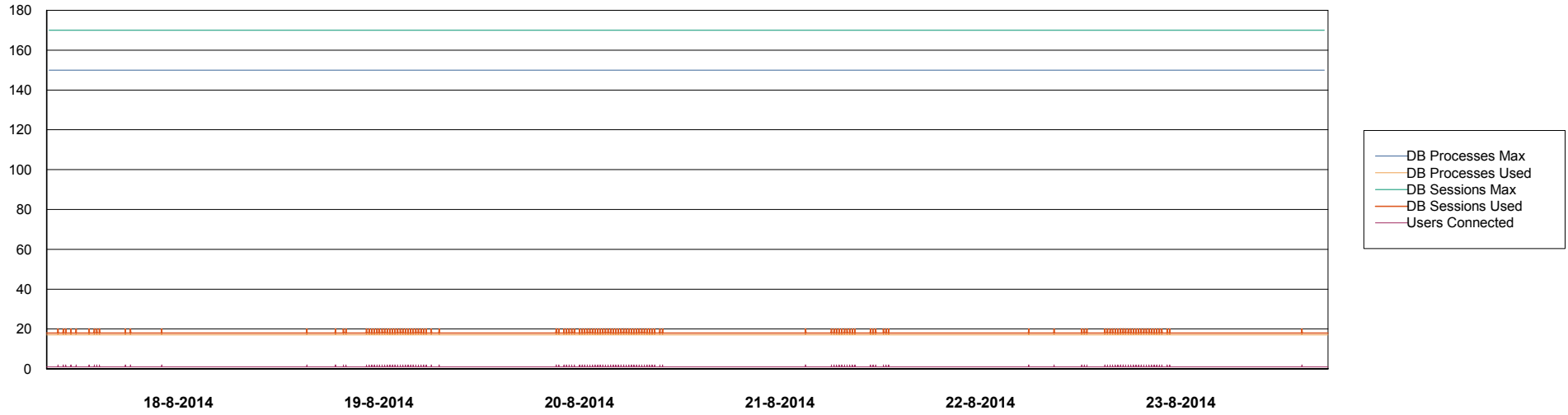


Weekly SLA Customer Report

Customer NIX_Production
Database ID 51



DATABASE PERFORMANCE NIXDB_Standby



Weekly SLA Customer Report

Customer NIX_Production
 Database ID 51



=====
 DATABASE TABLESPACES NIXDB_BI
 =====
 TOTAL DATABASE SIZE PER TABLESPACE

Date	Tablespace Name	Filesize (Gb)	Usedsize (Gb)	Percentage free
23-8-2014	ABSDATA	20	16	20
	INDX	40	26	35
22-8-2014	ABSDATA	20	16	20
	INDX	40	26	35
21-8-2014	ABSDATA	20	16	20
	INDX	40	26	35
20-8-2014	ABSDATA	20	16	20
	INDX	40	26	35
19-8-2014	ABSDATA	20	16	20
	INDX	40	26	35
18-8-2014	ABSDATA	20	16	20
	INDX	40	26	35
17-8-2014	ABSDATA	20	16	20
	INDX	40	26	35

Weekly SLA Customer Report

Customer NIX_Production
 Database ID 51



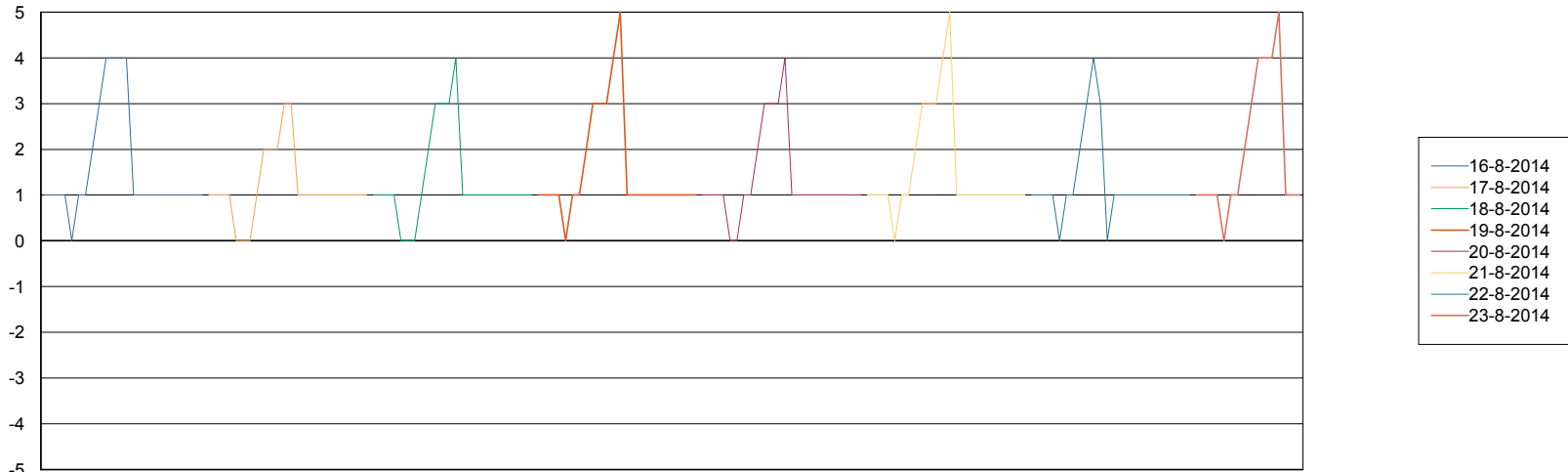
=====
 DATABASE TABLESPACES NIXDB_Production
 =====

TOTAL DATABASE SIZE PER TABLESPACE

Date	Tablespace Name	Filesize (Gb)	Usedsize (Gb)	Percentage free
23-8-2014	ABSDATA	40	27	33
	INDX	97	73	25
22-8-2014	ABSDATA	40	27	33
	INDX	97	73	25
21-8-2014	ABSDATA	40	27	33
	INDX	97	73	25
20-8-2014	ABSDATA	40	27	33
	INDX	97	72	26
19-8-2014	ABSDATA	40	27	33
	INDX	97	72	26
18-8-2014	ABSDATA	40	27	33
	INDX	97	72	26
17-8-2014	ABSDATA	40	27	33
	INDX	97	72	26

=====
 STANDBY DATABASE HEALTH NIX_Production
 =====

Recovery lag for last 7 days



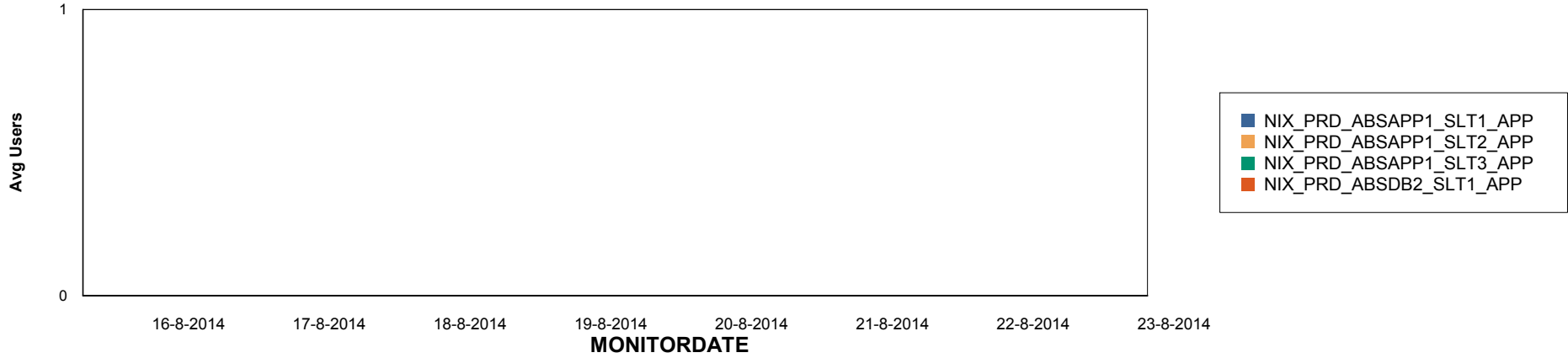
Weekly SLA Customer Report

Customer NIX_Production
Database ID 51

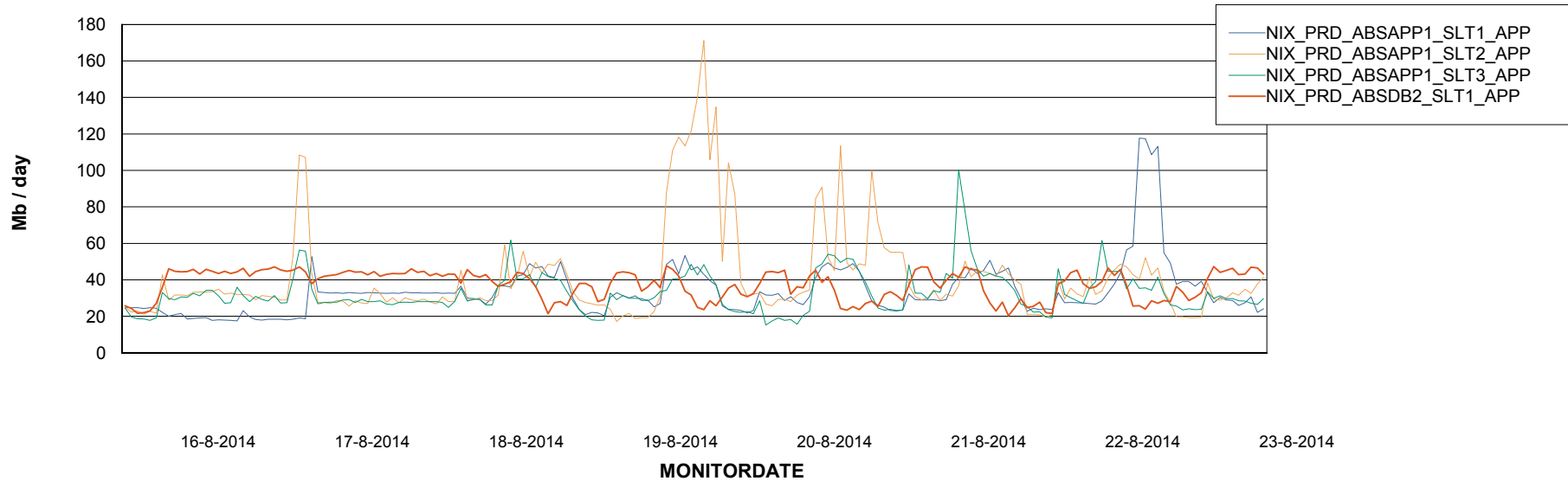


ABSolute Application Server Services

Disaster per ABS Server



Avg memory used per ABS Server Service



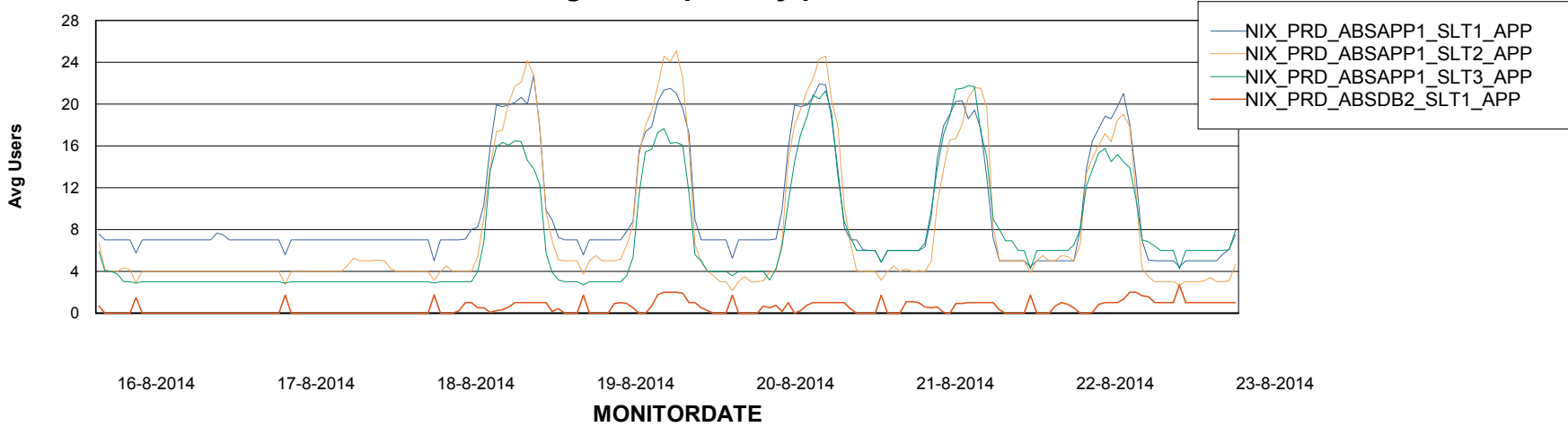
Weekly SLA Customer Report

Customer NIX_Production
Database ID 51



=====
ABSolute Application Server Services
=====

Avg users per day per ABS server



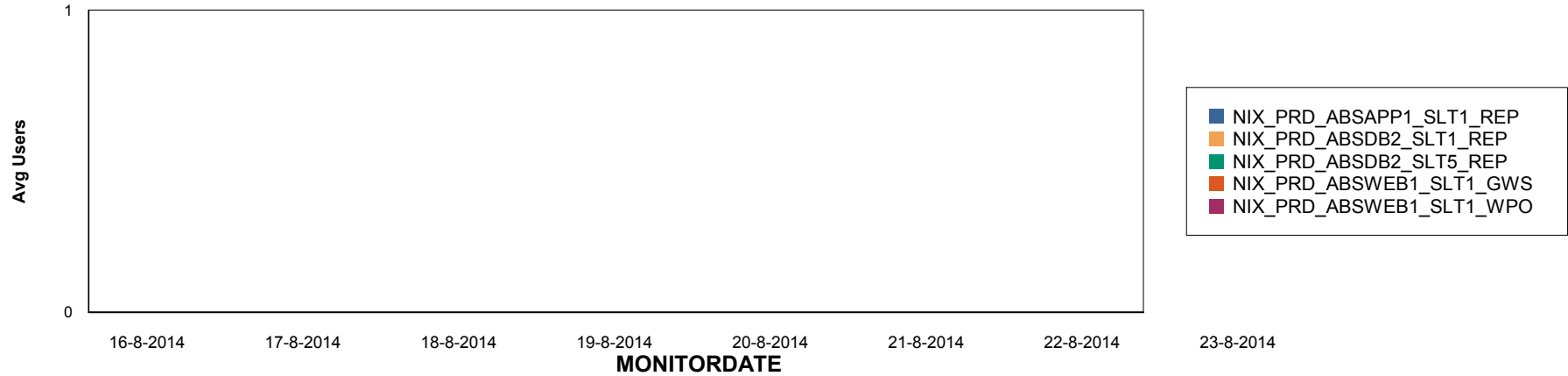
Weekly SLA Customer Report

Customer NIX_Production
Database ID 51

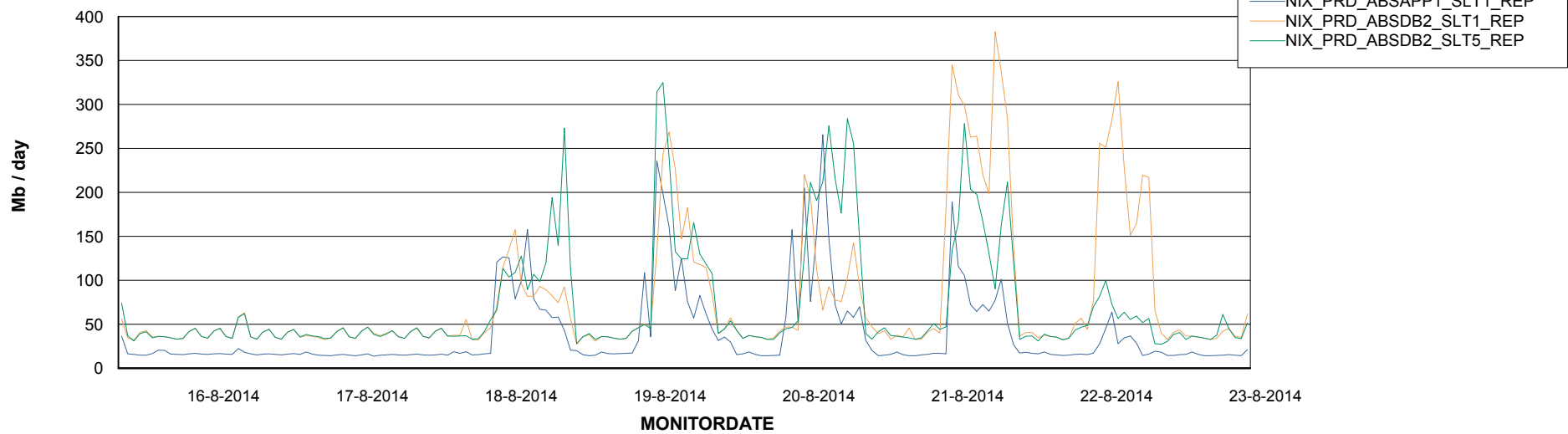


=====
ABSolute Application ReportServer Services
=====

Disaster per ReportServer



Avg memory used per ReportServer Service



Weekly SLA Customer Report

Customer NIX_Production
Database ID 51



Disaster per ABS component

