

Weekly SLA Customer Report

Customer JWR Production
 Database ID 43



=====
 HARDDISK USAGE JWR_PRD_JWR-ABS-01
 =====

	Used disk space on / (GB)	Total disk space on / (GB)	Free disk space on / (GB)
23-8-2014	27	49	20
22-8-2014	29	49	18
21-8-2014	27	49	19
20-8-2014	27	49	19
19-8-2014	28	49	18
18-8-2014	29	49	18
17-8-2014	29	49	18

=====
 HARDDISK USAGE JWR_PRD_JWR-ABS-02
 =====

	Used disk space on / (GB)	Total disk space on / (GB)	Free disk space on / (GB)
23-8-2014	24	49	23
22-8-2014	26	49	21
21-8-2014	25	49	22
20-8-2014	24	49	22
19-8-2014	25	49	21
18-8-2014	25	49	21
17-8-2014	25	49	21

Weekly SLA Customer Report

Customer JWR Production
 Database ID 43



=====

HARDDISK USAGE JWR_PRD_JWR-ODB-01

=====

	Used disk space on / (GB)	Total disk space on / (GB)	Free disk space on / (GB)
23-8-2014	71	90	14
22-8-2014	72	90	14
21-8-2014	72	90	13
20-8-2014	72	90	14
19-8-2014	72	90	14
18-8-2014	72	90	13
17-8-2014	71	90	14

=====

HARDDISK USAGE JWR_PRD_JWR-ODB-02

=====

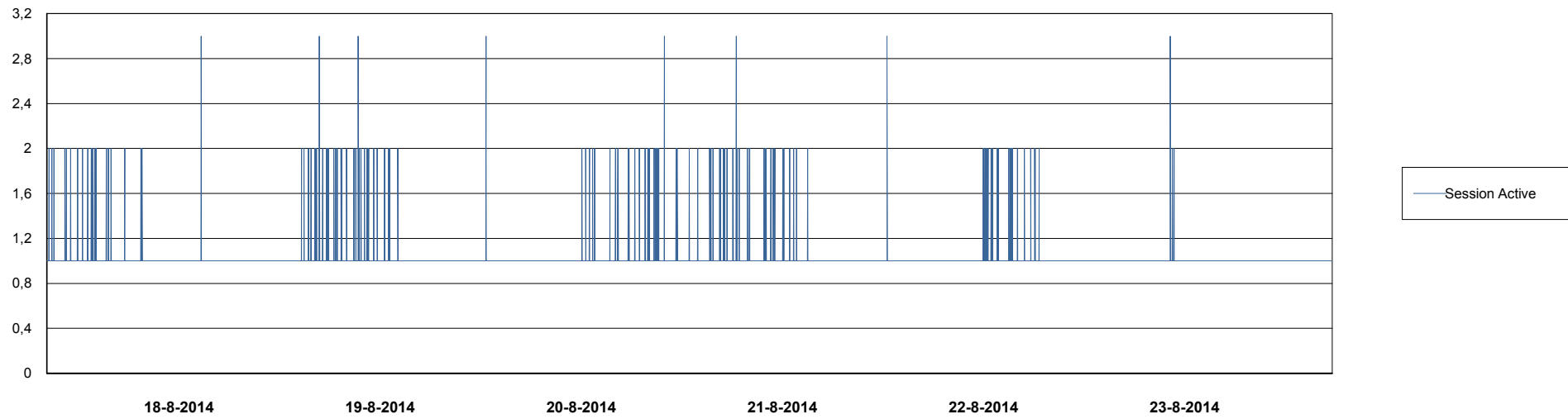
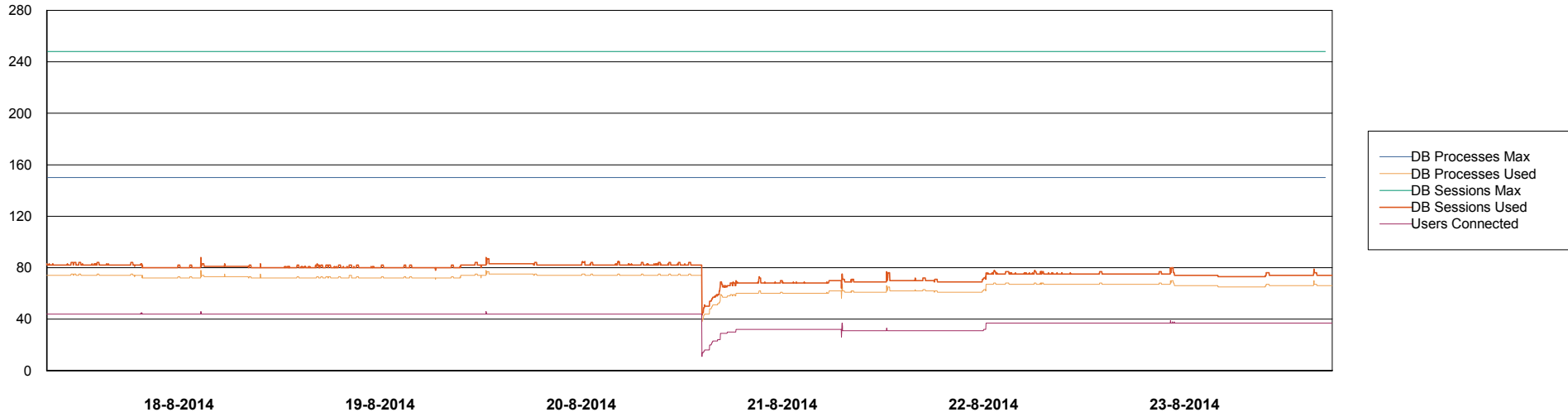
	Used disk space on / (GB)	Total disk space on / (GB)	Free disk space on / (GB)
23-8-2014	91	138	40
22-8-2014	91	138	40
21-8-2014	91	138	40
20-8-2014	91	138	40
19-8-2014	91	138	40
18-8-2014	91	138	40
17-8-2014	91	138	40

Weekly SLA Customer Report

Customer JWR Production
Database ID 43



DATABASE PERFORMANCE JWRDB_Production



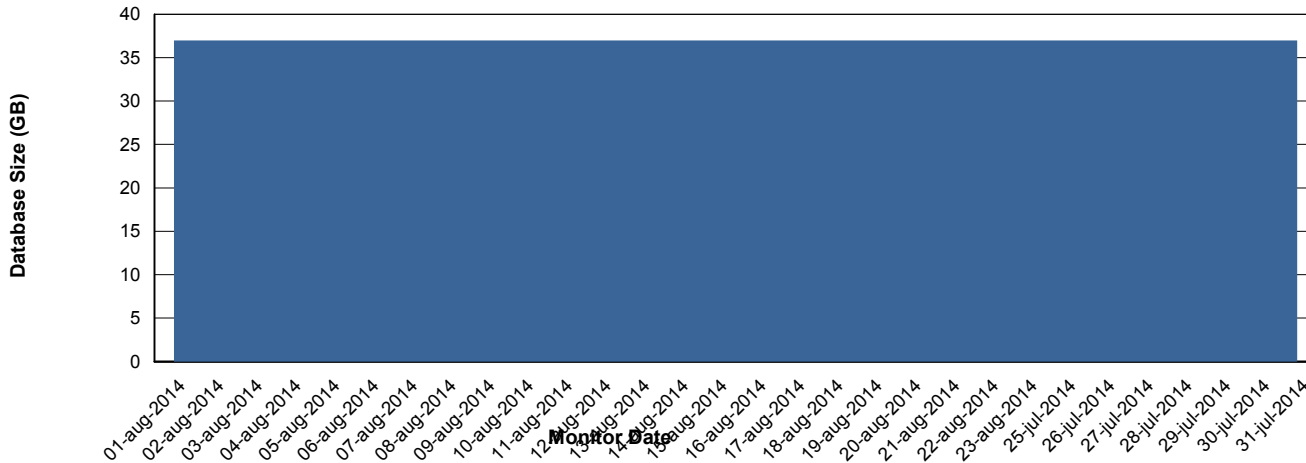
Weekly SLA Customer Report

Customer JWR Production
 Database ID 43



=====
 DATABASE SIZE JWRDB_Production
 =====

Database growth over last month



=====
 DATABASE TABLESPACES JWRDB_Production
 =====

TOTAL DATABASE SIZE PER TABLESPACE

Date	Tablespace Name	Filesize (Gb)	Usedsize (Gb)	Percentage free
23-8-2014	ABSDATA	15	11	27
	INDX	30	25	17
22-8-2014	ABSDATA	15	11	27
	INDX	30	25	17
21-8-2014	ABSDATA	15	11	27
	INDX	30	25	17
20-8-2014	ABSDATA	15	11	27
	INDX	30	25	17
19-8-2014	ABSDATA	15	11	27
	INDX	30	25	17
18-8-2014	ABSDATA	15	11	27
	INDX	30	25	17
17-8-2014	ABSDATA	15	11	27
	INDX	30	25	17

Weekly SLA Customer Report

Customer JWR Production
Database ID 43



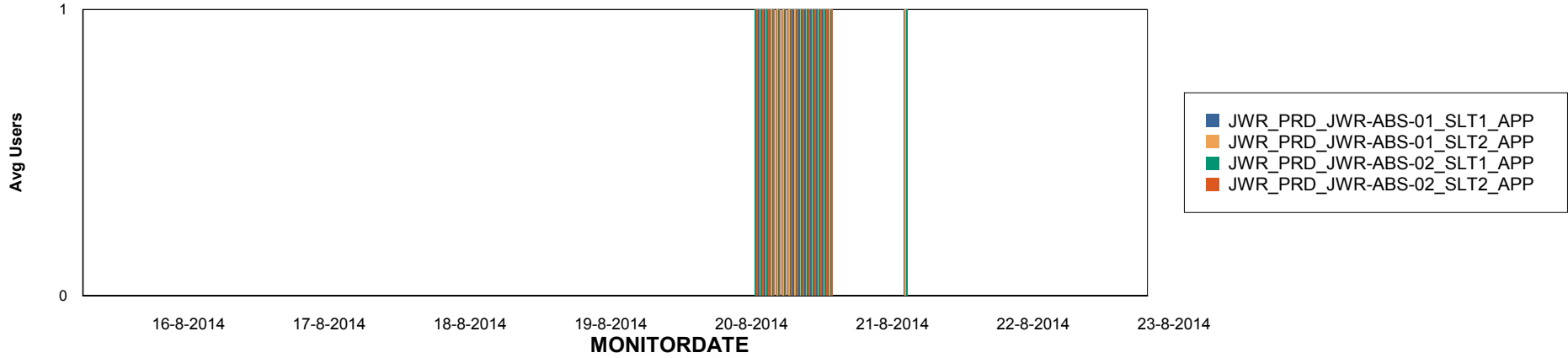
Weekly SLA Customer Report

Customer JWR Production
Database ID 43

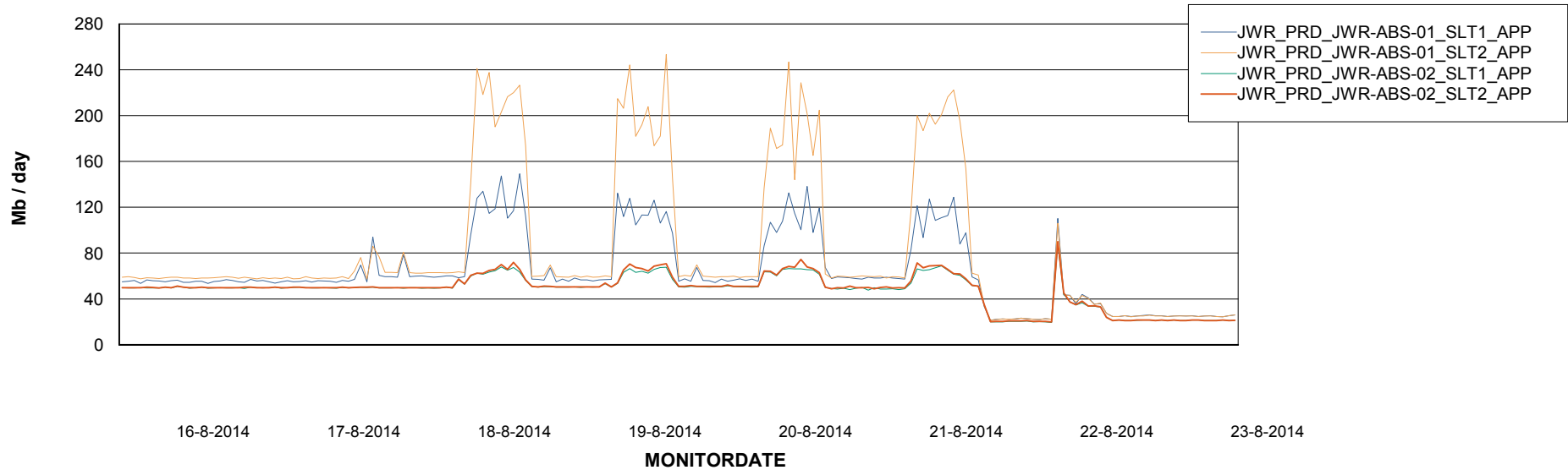


ABSolute Application Server Services

Disaster per ABS Server



Avg memory used per ABS Server Service



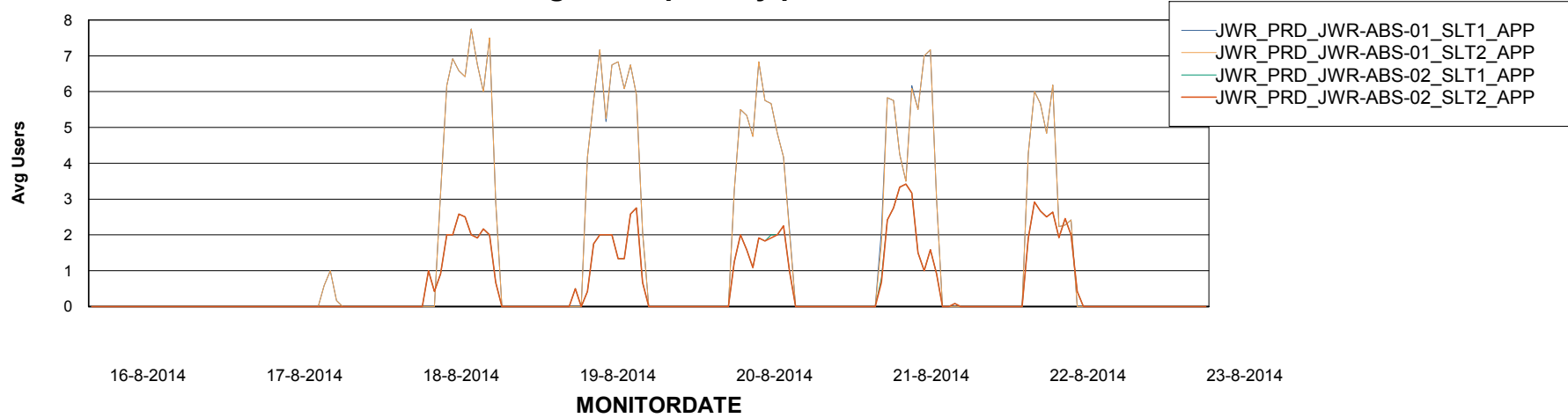
Weekly SLA Customer Report

Customer JWR Production
Database ID 43



=====
ABSolute Application Server Services
=====

Avg users per day per ABS server



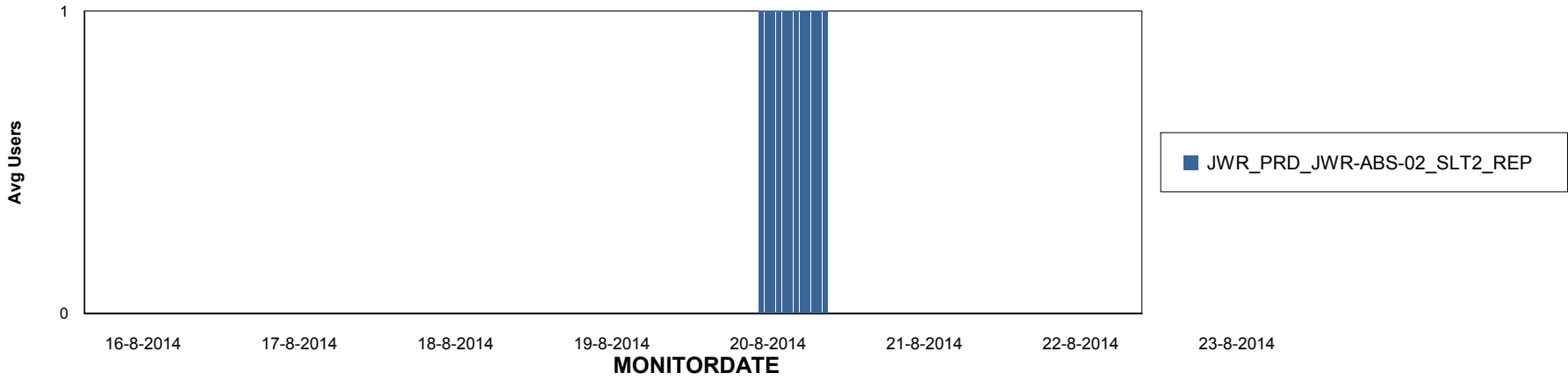
Weekly SLA Customer Report

Customer JWR Production
Database ID 43

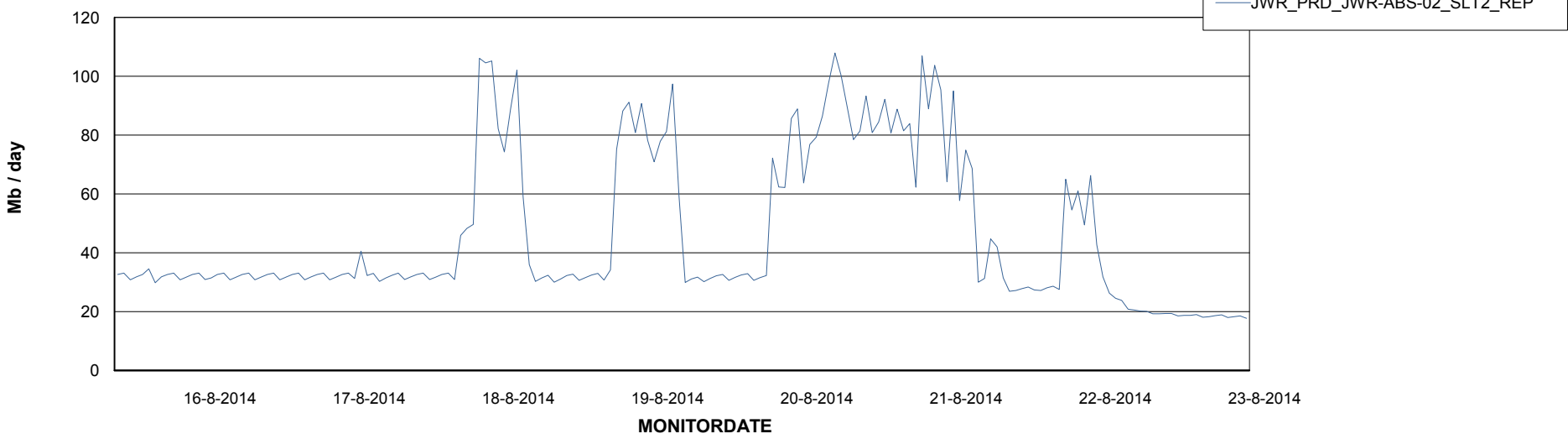


=====
ABSolute Application ReportServer Services
=====

Disaster per ReportServer



Avg memory used per ReportServer Service



Weekly SLA Customer Report

Customer JWR Production
Database ID 43



Disaster per ABS component

