

Weekly SLA Customer Report

Customer BCH Production
 Database ID 28



=====
 HARDDISK USAGE BCH_PRD_ABSAPP1
 =====

	Total disk space on C (GB)	Free disk space on C (GB)	Total disk space on D (GB)	Free disk space on D (GB)
23-8-2014	45	9	30	30
22-8-2014	45	9	30	30
21-8-2014	45	9	30	30
20-8-2014	45	9	30	30
19-8-2014	45	9	30	30
18-8-2014	45	10	30	30
17-8-2014	45	10	30	30

=====
 HARDDISK USAGE BCH_PRD_ABSAPP2
 =====

	Total disk space on C (GB)	Free disk space on C (GB)	Total disk space on D (GB)	Free disk space on D (GB)
23-8-2014	45	9	30	30
22-8-2014	45	9	30	30
21-8-2014	45	9	30	30
20-8-2014	45	9	30	30
19-8-2014	45	9	30	30
18-8-2014	45	9	30	30
17-8-2014	45	10	30	30

Weekly SLA Customer Report

Customer BCH Production
 Database ID 28



=====
 HARDDISK USAGE BCH_PRD_ABSAPP3
 =====

	Total disk space on C (GB)	Free disk space on C (GB)	Total disk space on D (GB)	Free disk space on D (GB)
23-8-2014	45	12	30	30
22-8-2014	45	12	30	30
21-8-2014	45	12	30	30
20-8-2014	45	12	30	30
19-8-2014	45	12	30	30
18-8-2014	45	12	30	30
17-8-2014	45	12	30	30

=====
 HARDDISK USAGE BCH_PRD_ABSWEB1
 =====

	Used disk space on C (GB)	Total disk space on C (GB)	Free disk space on C (GB)
23-8-2014	30	45	15
22-8-2014	30	45	15
21-8-2014	30	45	15
20-8-2014	30	45	15
19-8-2014	30	45	15
18-8-2014	30	45	15
17-8-2014	30	45	15

Weekly SLA Customer Report

Customer BCH Production
 Database ID 28



=====
 HARDDISK USAGE BCH_PRD_ABSWEB2
 =====

	Used disk space on C (GB)	Total disk space on C (GB)	Free disk space on C (GB)
23-8-2014	29	45	16
22-8-2014	29	45	16
21-8-2014	29	45	16
20-8-2014	29	45	16
19-8-2014	29	45	16
18-8-2014	29	45	16
17-8-2014	29	45	16

=====
 HARDDISK USAGE BCH_PRD_ORCDB1
 =====

	Total disk space on C (GB)	Free disk space on C (GB)	Total disk space on D (GB)	Free disk space on D (GB)
23-8-2014	278	162	278	74
22-8-2014	278	163	278	76
21-8-2014	278	163	278	79
20-8-2014	278	163	278	82
19-8-2014	278	163	278	85
18-8-2014	278	163	278	88
17-8-2014	278	163	278	90

Weekly SLA Customer Report

Customer BCH Production
 Database ID 28



=====
 HARDDISK USAGE BCH_PRD_ORCDB2
 =====

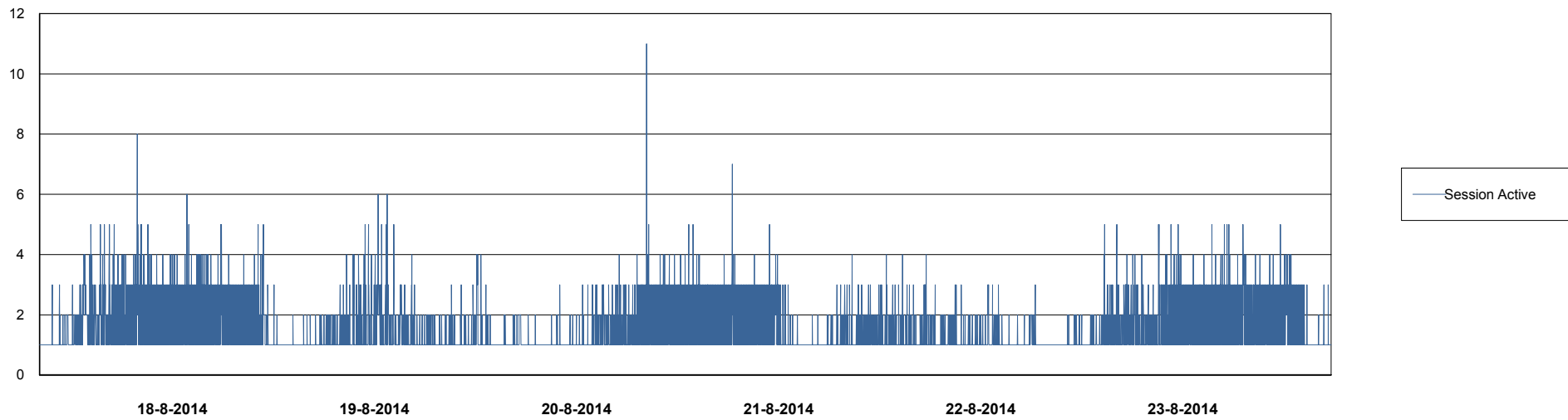
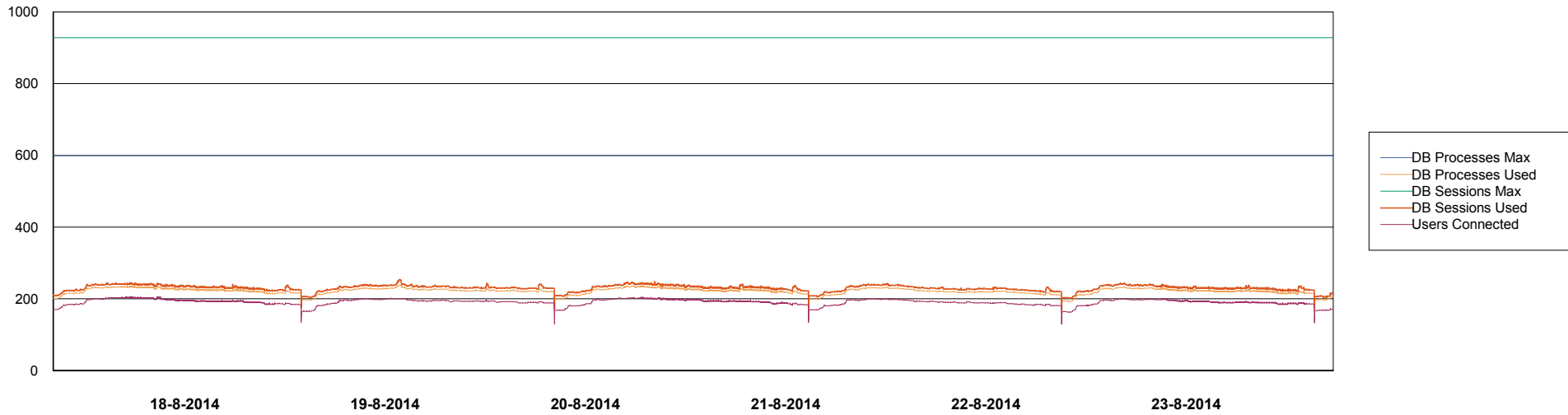
	Total disk space on C (GB)	Free disk space on C (GB)	Total disk space on D (GB)	Free disk space on D (GB)
23-8-2014	278	195	278	71
22-8-2014	278	195	278	73
21-8-2014	278	196	278	76
20-8-2014	278	196	278	79
19-8-2014	278	196	278	82
18-8-2014	278	196	278	85
17-8-2014	278	196	278	87

Weekly SLA Customer Report

Customer BCH Production
Database ID 28



DATABASE PERFORMANCE BCHDB_Production

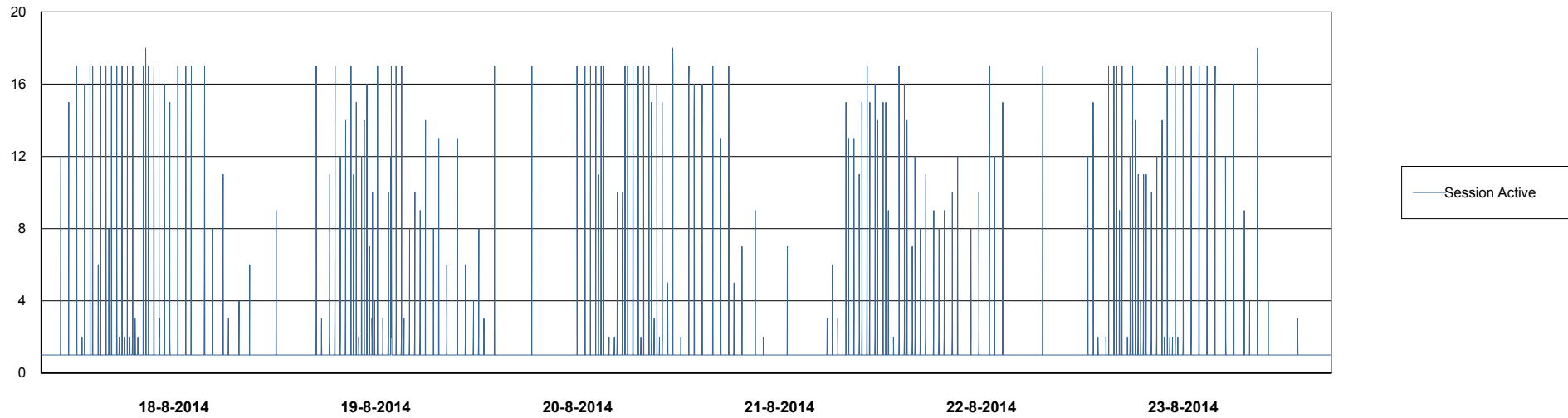
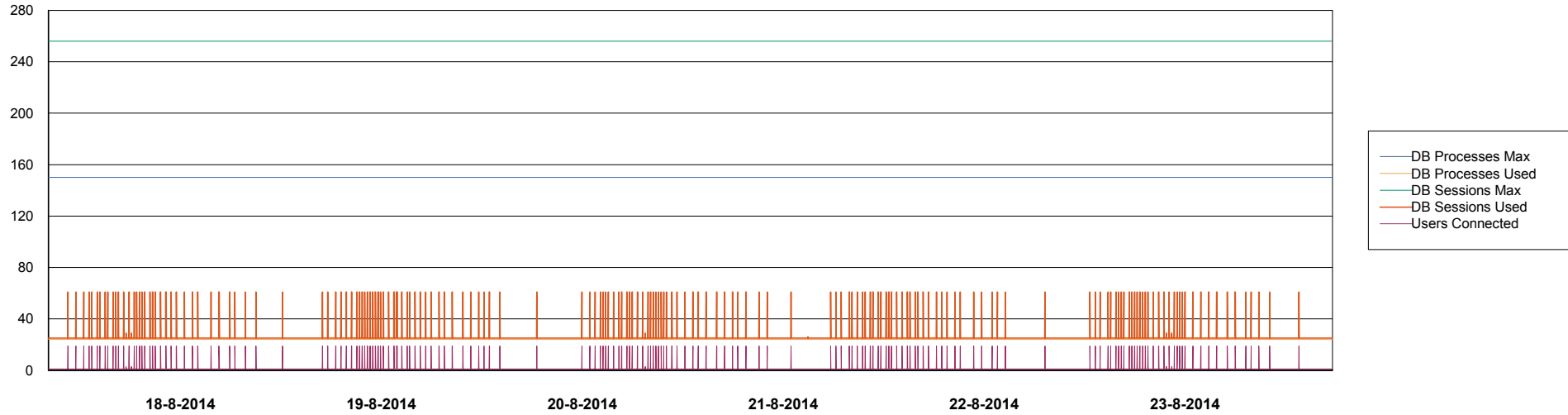


Weekly SLA Customer Report

Customer BCH Production
Database ID 28



=====
DATABASE PERFORMANCE BCHDB_Standby
=====



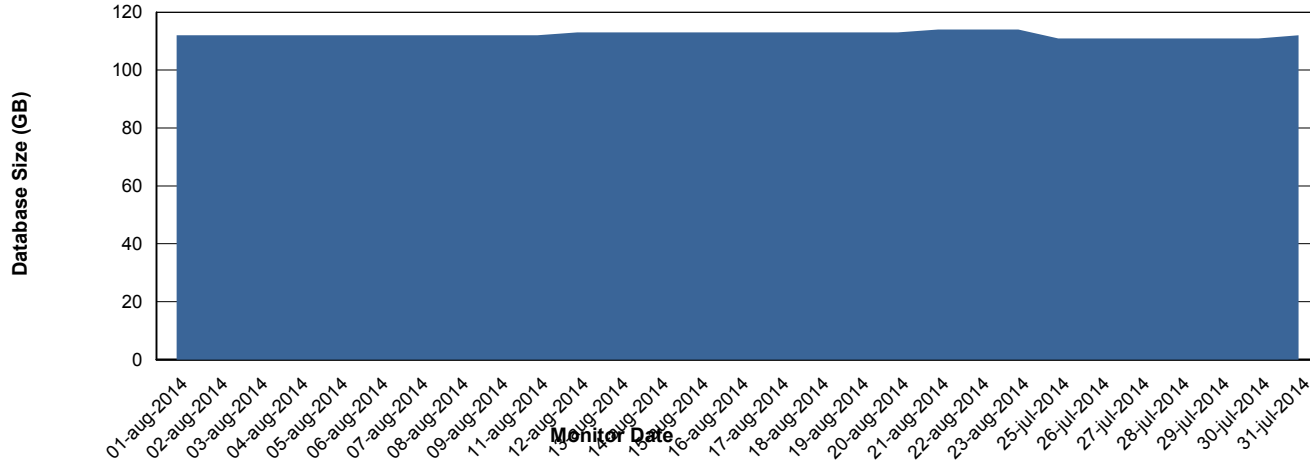
Weekly SLA Customer Report

Customer BCH Production
 Database ID 28



=====
 DATABASE SIZE BCHDB_Production
 =====

Database growth over last month



=====
 DATABASE TABLESPACES BCHDB_Production
 =====

TOTAL DATABASE SIZE PER TABLESPACE

Date	Tablespace Name	Filesize (Gb)	Usedsize (Gb)	Percentage free
23-8-2014	ABSDATA	26	0	100
	INDX	104	91	13
22-8-2014	ABSDATA	26	0	100
	INDX	104	91	13
21-8-2014	ABSDATA	26	0	100
	INDX	104	91	13
20-8-2014	ABSDATA	26	0	100
	INDX	104	91	13
19-8-2014	ABSDATA	26	0	100
	INDX	104	91	13
18-8-2014	ABSDATA	26	0	100
	INDX	104	91	13
17-8-2014	ABSDATA	26	0	100
	INDX	104	91	13

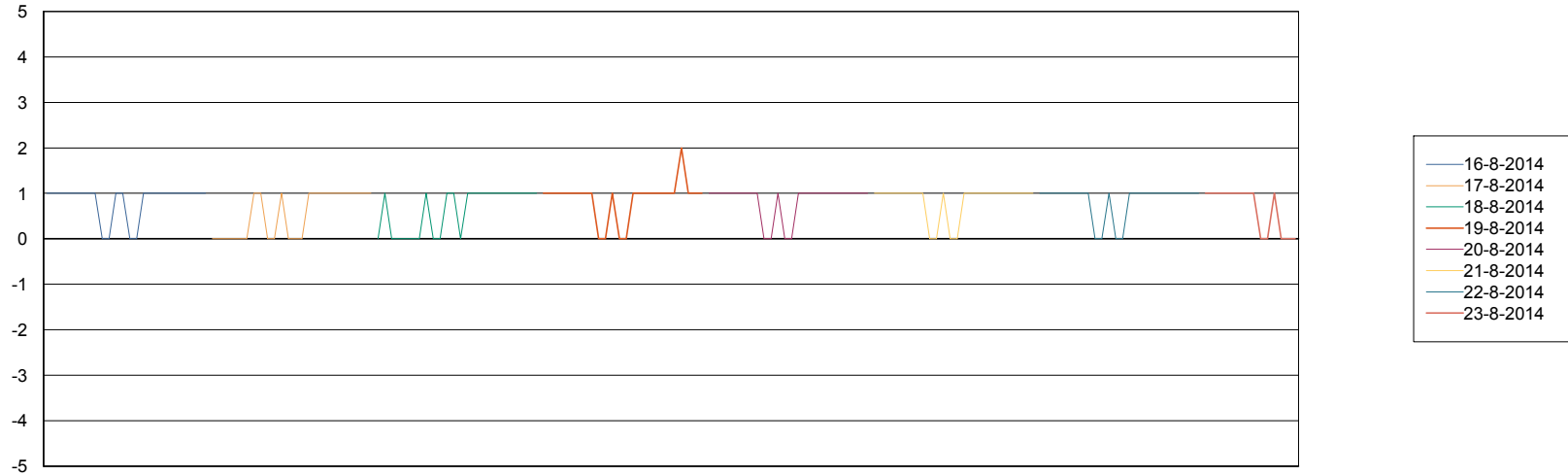
Weekly SLA Customer Report

Customer BCH Production
Database ID 28



=====
STANDBY DATABASE HEALTH BCH Production
=====

Recovery lag for last 7 days



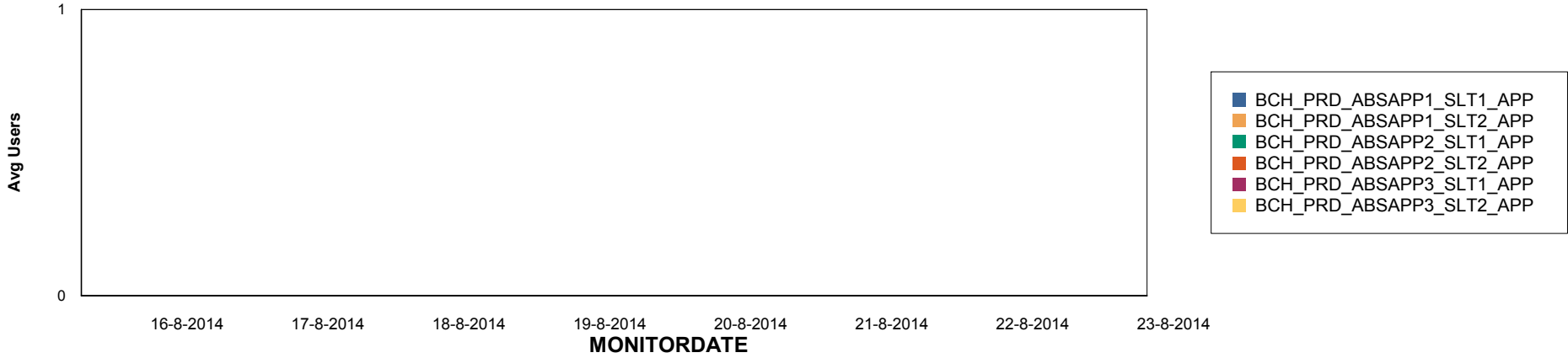
Weekly SLA Customer Report

Customer BCH Production
Database ID 28

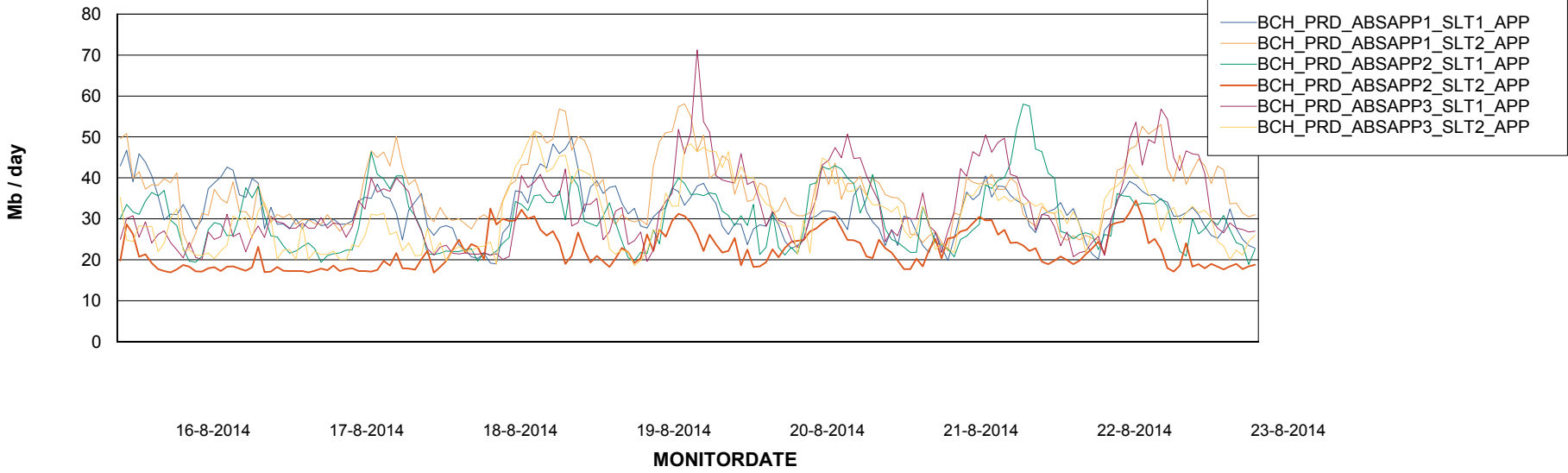


=====
ABSolute Application Server Services
=====

Disaster per ABS Server



Avg memory used per ABS Server Service



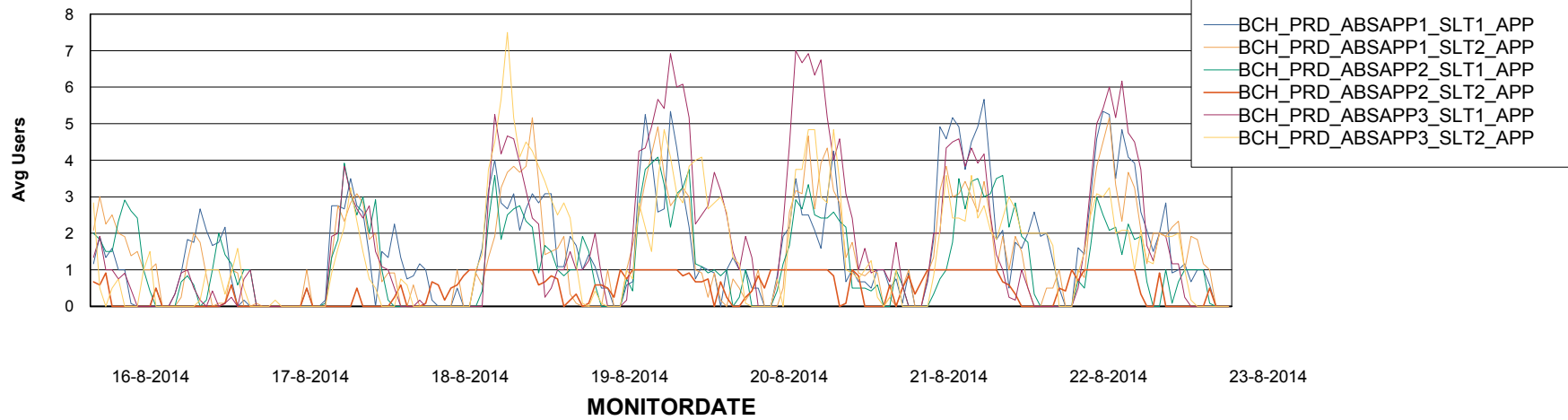
Weekly SLA Customer Report

Customer BCH Production
Database ID 28



=====
ABSolute Application Server Services
=====

Avg users per day per ABS server



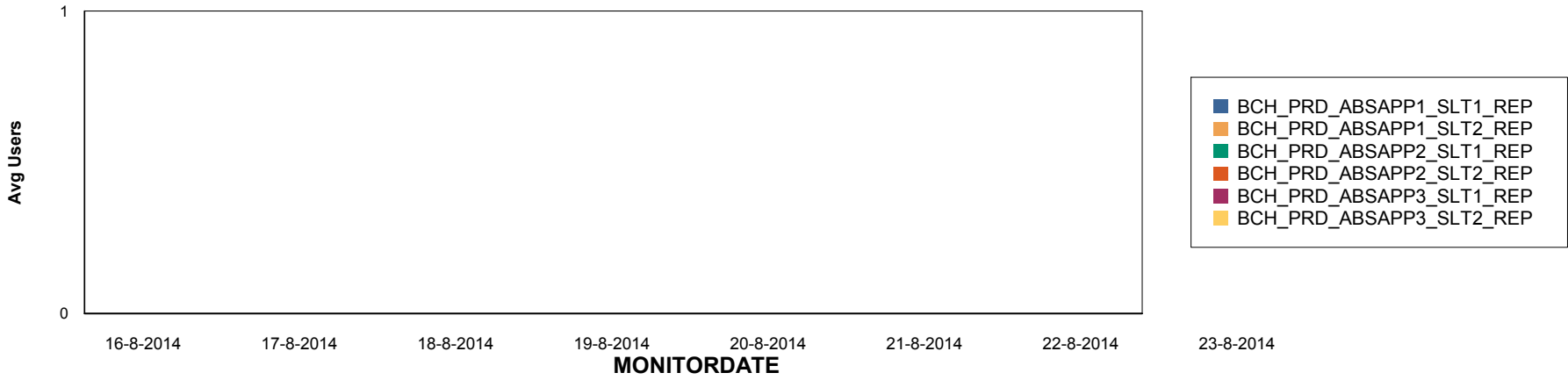
Weekly SLA Customer Report

Customer BCH Production
Database ID 28

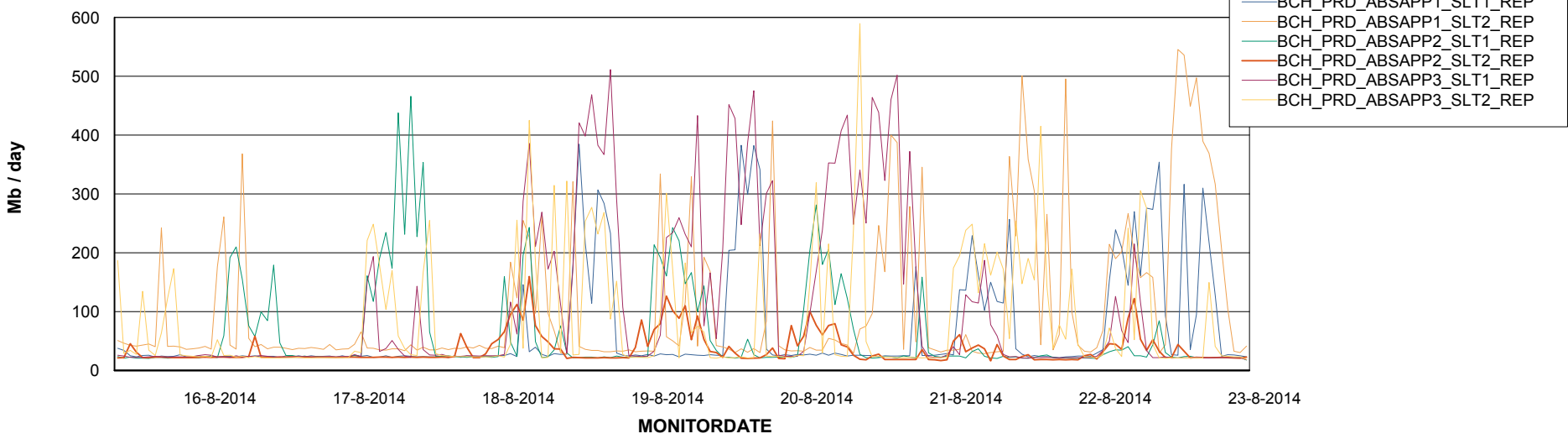


=====
ABSolute Application ReportServer Services
=====

Disaster per ReportServer



Avg memory used per ReportServer Service



Weekly SLA Customer Report

Customer BCH Production
Database ID 28



Disaster per ABS component

