

# Weekly SLA Customer Report

Customer AUJ\_Production  
 Database ID 41



=====  
 HARDDISK USAGE AUJDB\_BI  
 =====

	Used disk space on / (GB)	Total disk space on / (GB)
23-8-2014	5	6
22-8-2014	5	6
21-8-2014	5	6
20-8-2014	5	6
19-8-2014	5	6
18-8-2014	5	6
17-8-2014	5	6

=====  
 HARDDISK USAGE AUJ\_PRD\_ORACLE1  
 =====

	Used disk space on \$1 (GB)	Total disk space on \$1 (GB)	Free disk space on \$1 (GB)
23-8-2014	111	290	67
22-8-2014	112	290	67
21-8-2014	112	290	67
20-8-2014	112	290	67
19-8-2014	112	290	67
18-8-2014	111	290	67
17-8-2014	111	290	67

# Weekly SLA Customer Report

Customer AUJ\_Production  
Database ID 41



HARDDISK USAGE AUJ\_PRD\_ORACLE2

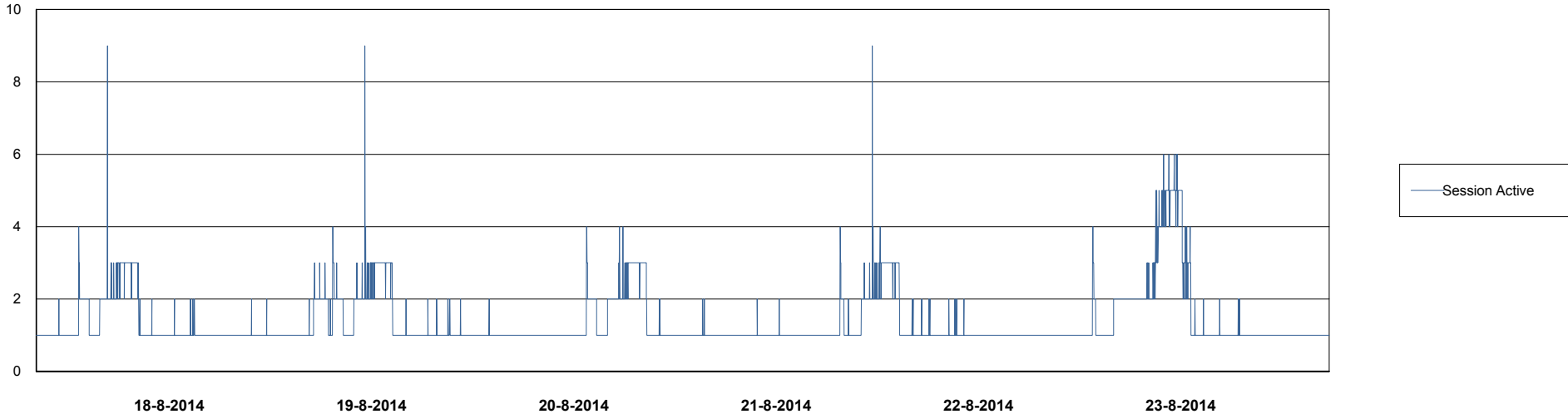
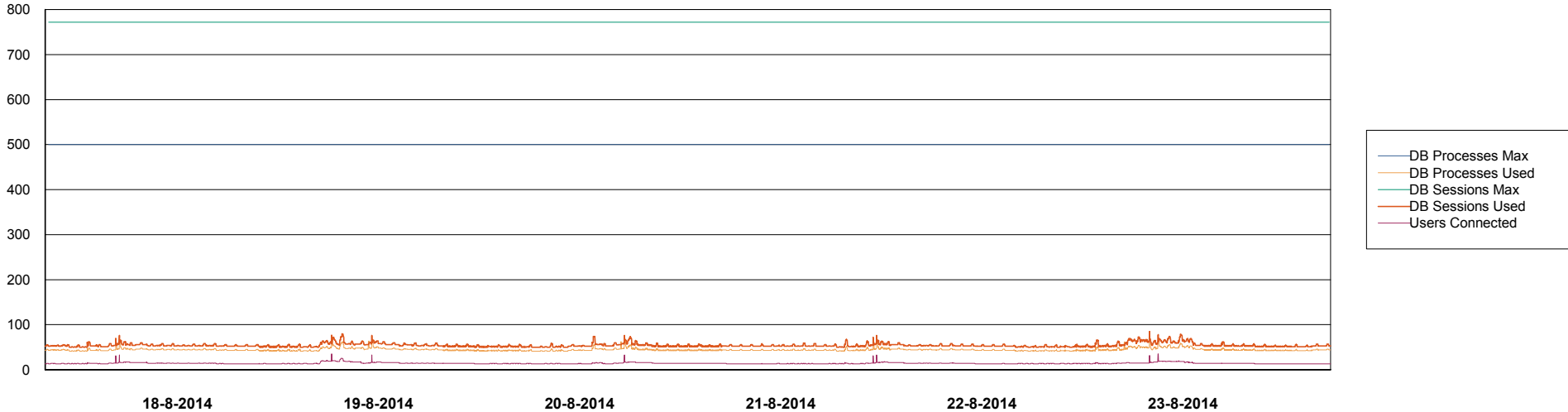
	Used disk space on \$1 (GB)	Total disk space on \$1 (GB)	Free disk space on \$1 (GB)
23-8-2014	6	109	98
22-8-2014	6	109	98
21-8-2014	6	109	98
20-8-2014	6	109	98
19-8-2014	6	109	98
18-8-2014	6	109	98
17-8-2014	6	109	98

# Weekly SLA Customer Report

Customer AUJ\_Production  
Database ID 41



=====  
DATABASE PERFORMANCE      AUJDB\_BI      =====  
=====

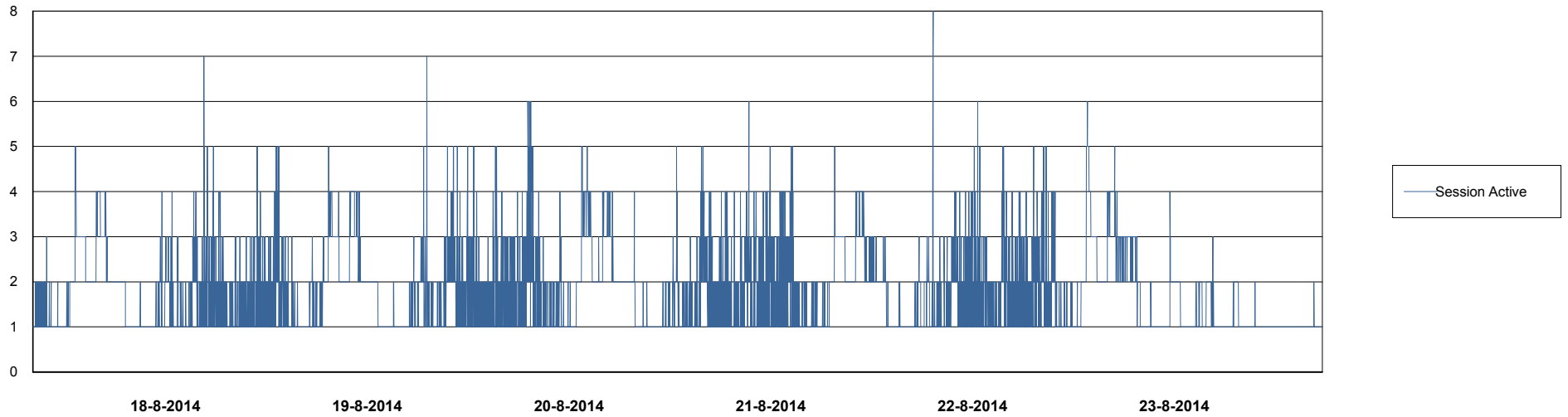
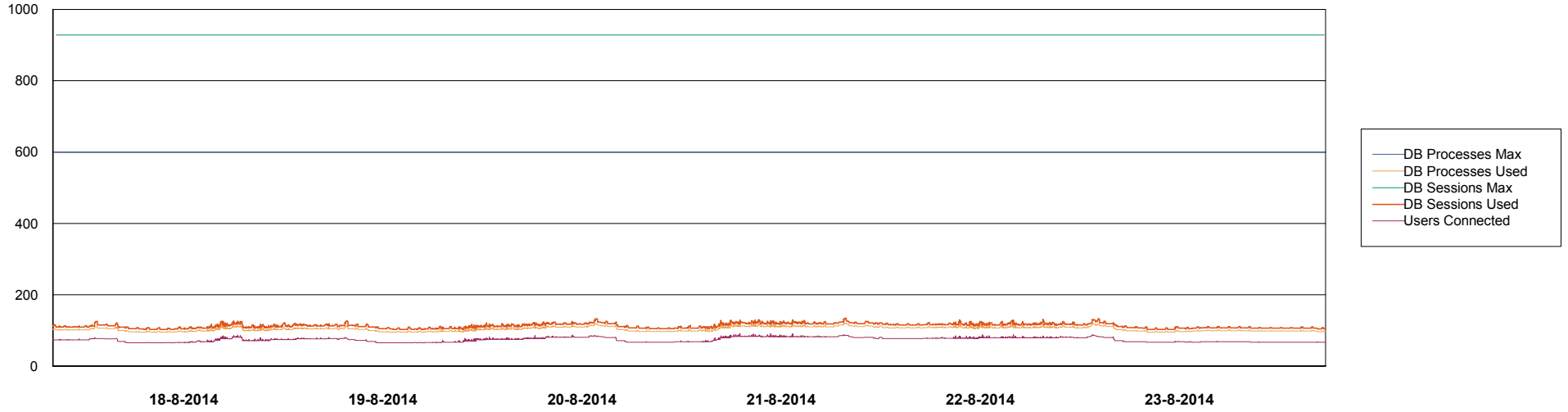


# Weekly SLA Customer Report

Customer AUJ\_Production  
Database ID 41



DATABASE PERFORMANCE AUJDB\_Production

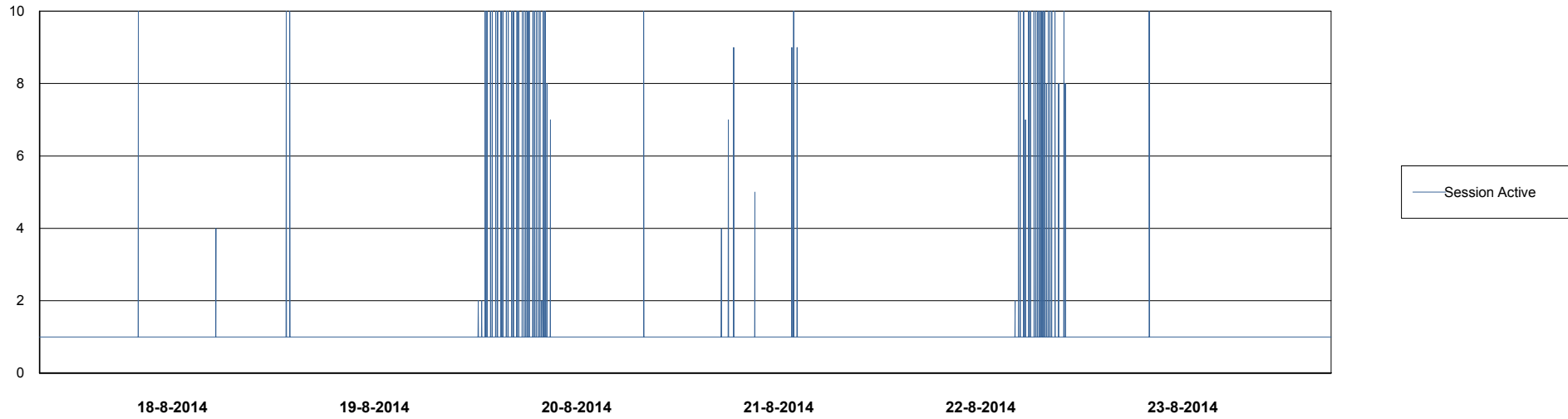
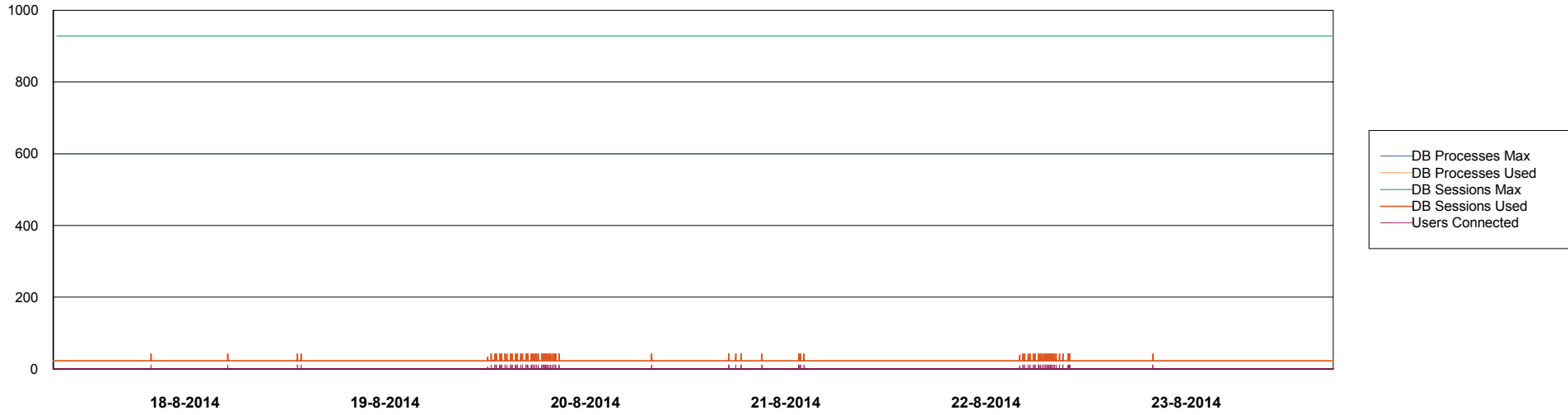


# Weekly SLA Customer Report

Customer AUJ\_Production  
Database ID 41



DATABASE PERFORMANCE AUJDB\_Standby

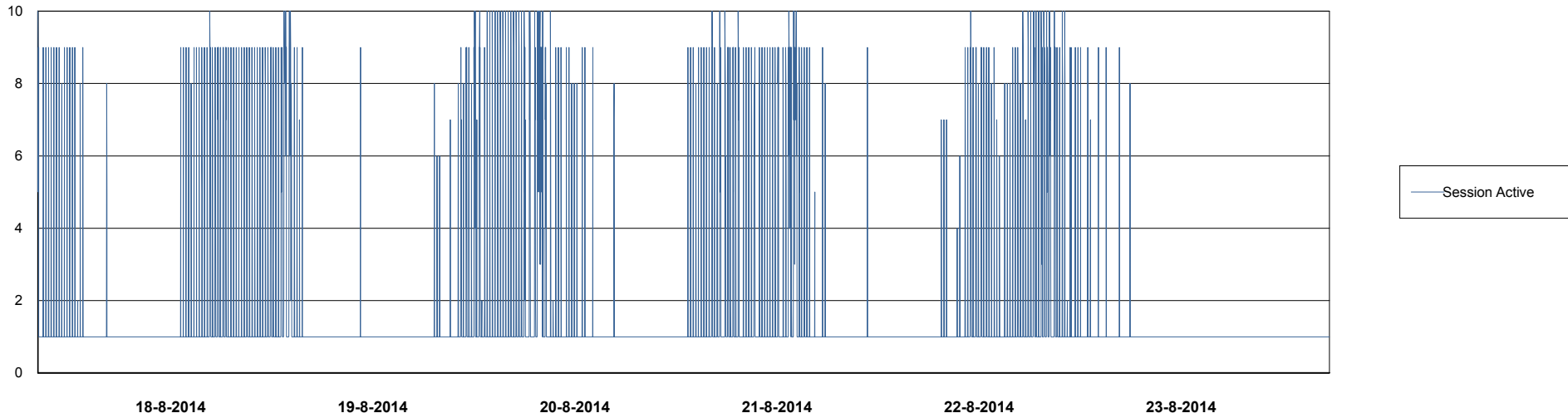
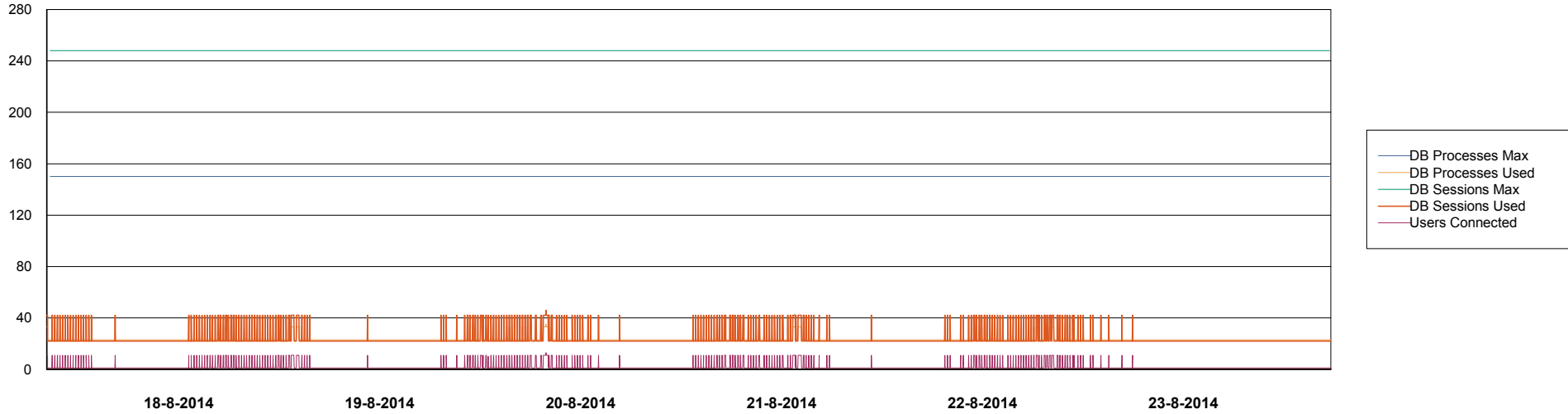


# Weekly SLA Customer Report

Customer AUJ\_Production  
Database ID 41



## DATABASE PERFORMANCE AUJDB3\_Standby



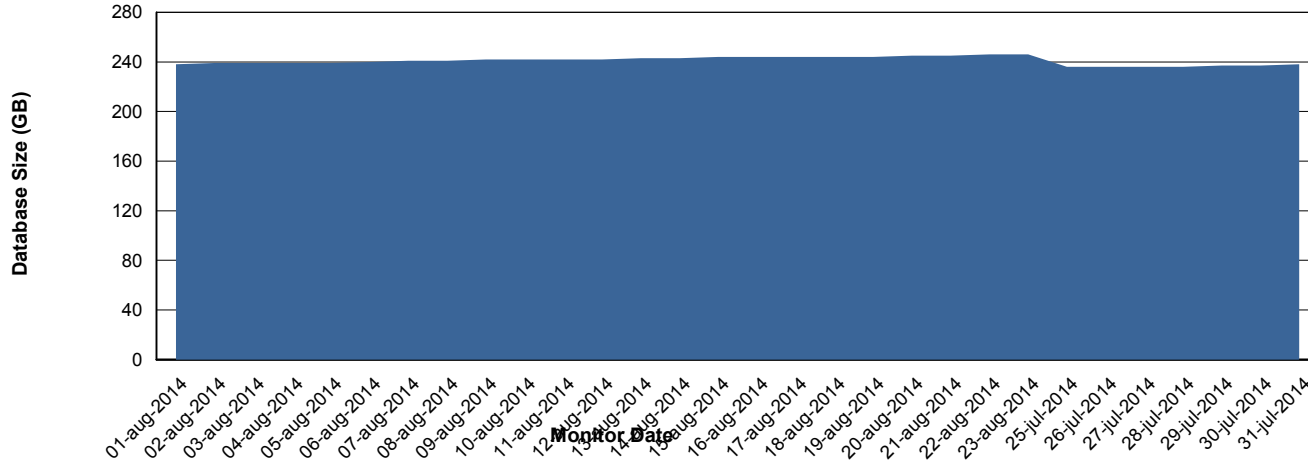
# Weekly SLA Customer Report

Customer AUJ\_Production  
Database ID 41



=====  
DATABASE SIZE AUJDB\_Production  
=====

## Database growth over last month



# Weekly SLA Customer Report

Customer AUJ\_Production  
 Database ID 41



=====  
 DATABASE TABLESPACES AUJDB\_BI  
 =====

TOTAL DATABASE SIZE PER TABLESPACE

Date	Tablespace Name	Filesize (Gb)	Usedsize (Gb)	Percentage free
23-8-2014	ABSDATA	93	80	14
	INDX	154	134	13
22-8-2014	ABSDATA	93	80	14
	INDX	154	134	13
21-8-2014	ABSDATA	93	80	14
	INDX	154	133	14
20-8-2014	ABSDATA	93	80	14
	INDX	154	133	14
19-8-2014	ABSDATA	93	79	15
	INDX	154	133	14
18-8-2014	ABSDATA	93	79	15
	INDX	154	132	14
17-8-2014	ABSDATA	93	79	15
	INDX	154	132	14

# Weekly SLA Customer Report

Customer AUJ\_Production  
 Database ID 41



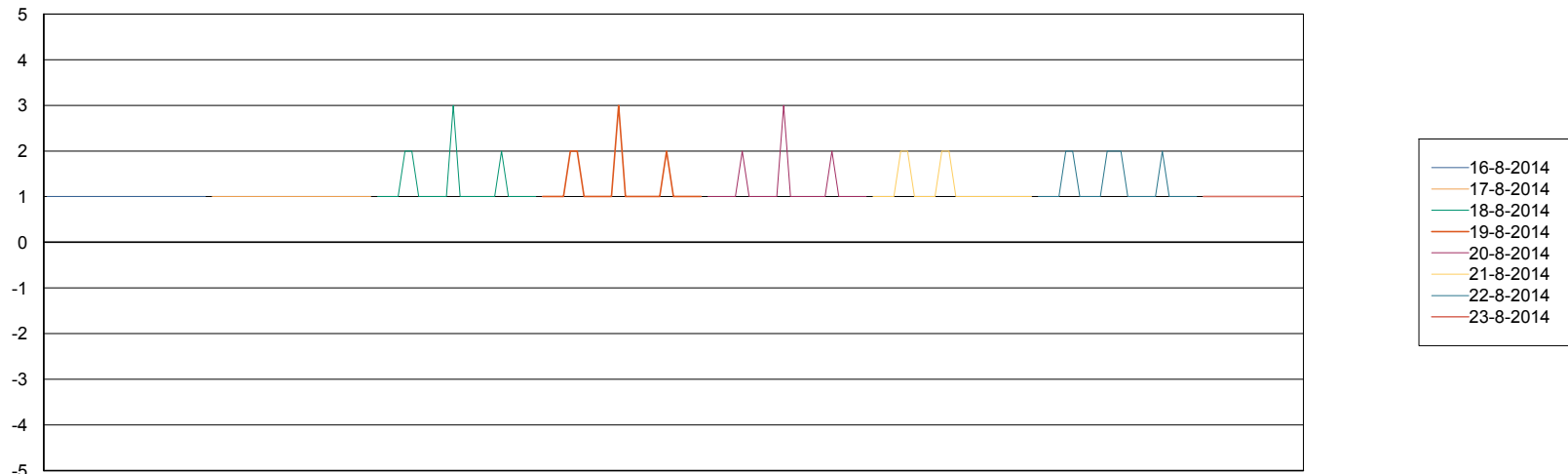
=====  
 DATABASE TABLESPACES AUJDB\_Production  
 =====

TOTAL DATABASE SIZE PER TABLESPACE

Date	Tablespace Name	Filesize (Gb)	Usedsize (Gb)	Percentage free
23-8-2014	ABSDATA	129	107	17
	INDX	157	137	13
22-8-2014	ABSDATA	129	107	17
	INDX	157	137	13
21-8-2014	ABSDATA	129	107	17
	INDX	157	137	13
20-8-2014	ABSDATA	129	107	17
	INDX	157	136	13
19-8-2014	ABSDATA	129	107	17
	INDX	157	136	13
18-8-2014	ABSDATA	129	107	17
	INDX	157	136	13
17-8-2014	ABSDATA	129	106	18
	INDX	157	136	13

=====  
 STANDBY DATABASE HEALTH AUJ\_Production  
 =====

Recovery lag for last 7 days



# Weekly SLA Customer Report

---

Customer AUJ\_Production  
Database ID 41

