

Weekly SLA Customer Report

Customer NIX_Production
 Database ID 51



=====
 HARDDISK USAGE NIX_PRD_ABSAPP1
 =====

	Total disk space on C (GB)	Free disk space on C (GB)
16-8-2014	136	88
15-8-2014	136	88
14-8-2014	136	88
13-8-2014	136	88
12-8-2014	136	88
11-8-2014	136	88
10-8-2014	136	88

=====
 HARDDISK USAGE NIX_PRD_ABSWEB1
 =====

	Total disk space on C (GB)	Free disk space on C (GB)
16-8-2014	930	728
15-8-2014	930	728
14-8-2014	930	729
13-8-2014	930	729
12-8-2014	930	729
11-8-2014	930	729
10-8-2014	930	729

Weekly SLA Customer Report

Customer NIX_Production
 Database ID 51



=====
 HARDDISK USAGE NIX_PRD_ORACLE_B11
 =====

	Total disk space on C (GB)	Free disk space on C (GB)	Total disk space on D (GB)	Free disk space on D (GB)	Total disk space on E (GB)	Free disk space on E (GB)
16-8-2014	40	7	279	180	236	170
15-8-2014	40	7	279	180	236	170
14-8-2014	40	7	279	180	236	170
13-8-2014	40	7	279	180	236	171
12-8-2014	40	7	279	180	236	171
11-8-2014	40	7	279	178	236	171
10-8-2014	40	7	279	176	236	162

=====
 HARDDISK USAGE NIX_PRD_ORCDB1
 =====

	Total disk space on C (GB)	Free disk space on C (GB)	Total disk space on D (GB)	Free disk space on D (GB)	Total disk space on E (GB)	Free disk space on E (GB)
16-8-2014	136	21	136	36	136	101
15-8-2014	136	21	136	36	136	102
14-8-2014	136	21	136	36	136	102
13-8-2014	136	21	136	36	136	102
12-8-2014	136	21	136	36	136	102
11-8-2014	136	21	136	36	136	102
10-8-2014	136	21	136	36	136	102

Weekly SLA Customer Report

Customer NIX_Production
Database ID 51



HARDDISK USAGE NIX_PRD_ORCDB2

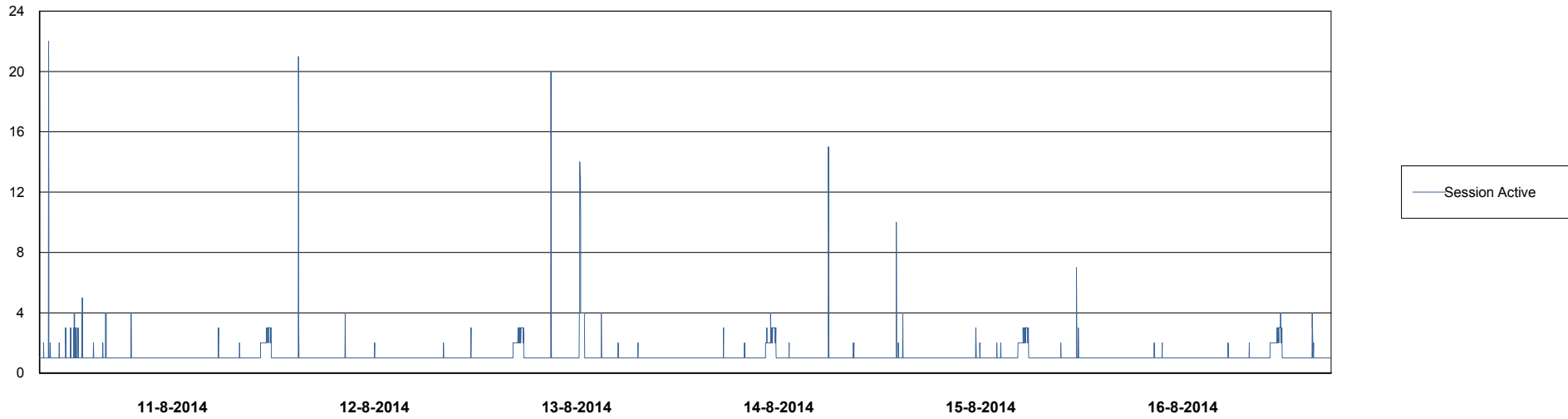
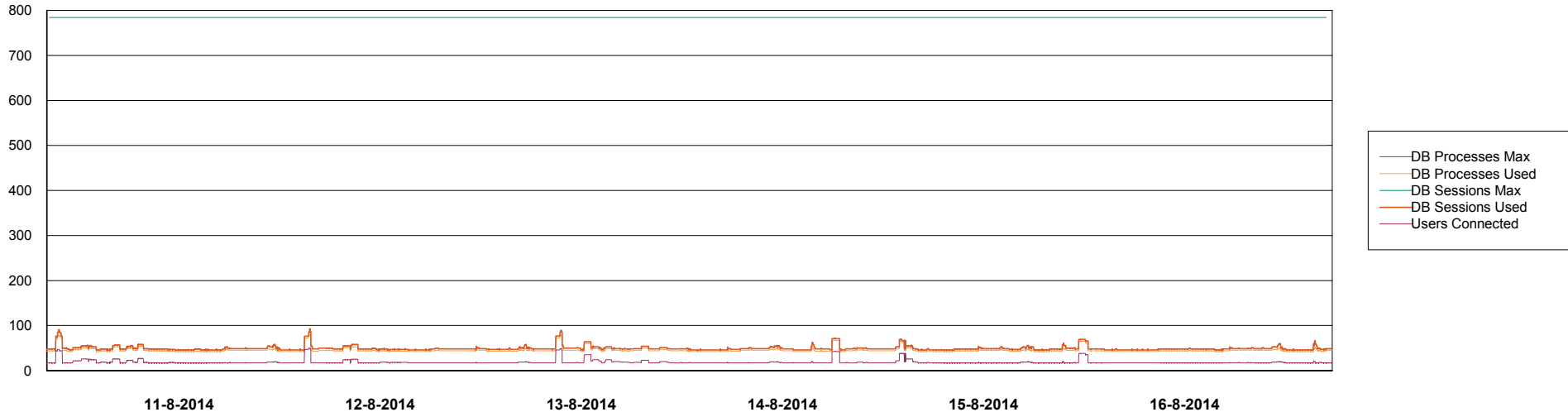
	Total disk space on C (GB)	Free disk space on C (GB)	Total disk space on D (GB)	Free disk space on D (GB)	Total disk space on E (GB)	Free disk space on E (GB)
16-8-2014	279	48	279	49	279	132
15-8-2014	279	48	279	49	279	167
14-8-2014	279	48	279	49	279	179
13-8-2014	279	49	279	49	279	181
12-8-2014	279	49	279	49	279	138
11-8-2014	279	49	279	49	279	83
10-8-2014	279	49	279	49	279	88

Weekly SLA Customer Report

Customer NIX_Production
Database ID 51



=====
DATABASE PERFORMANCE NIXDB_BI
=====

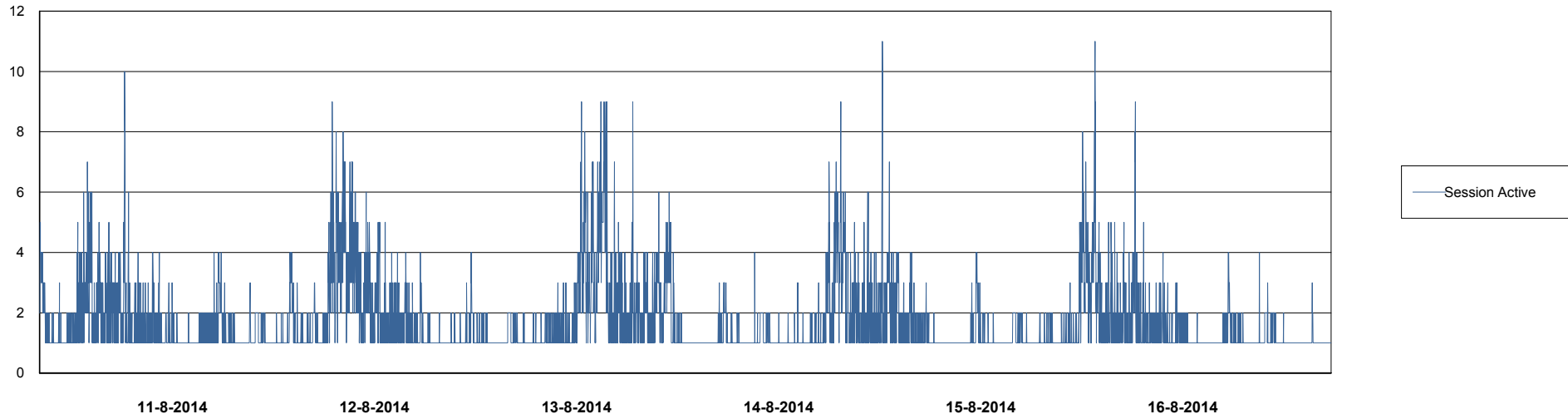
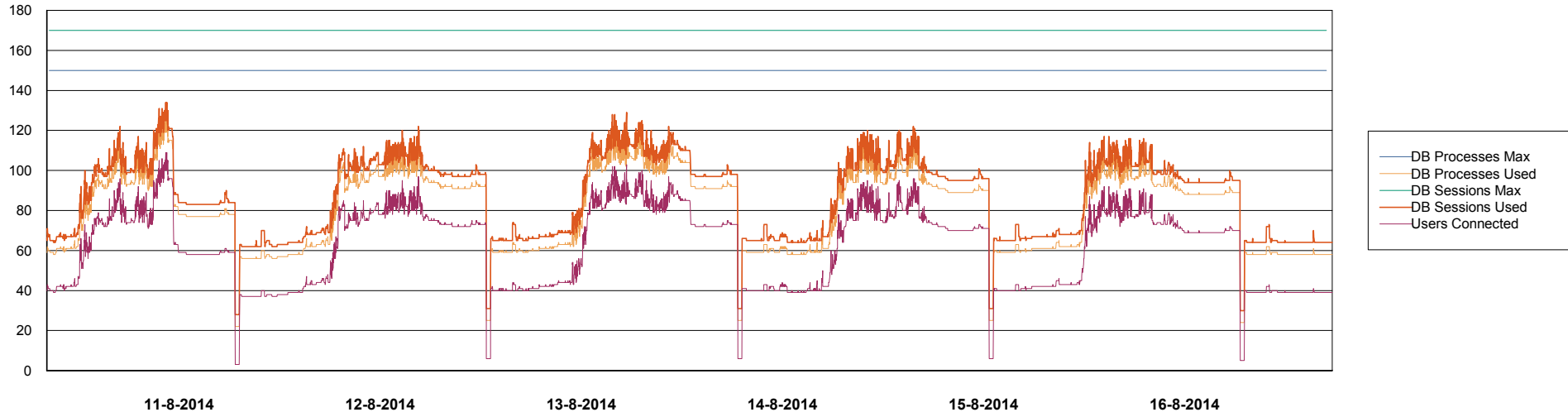


Weekly SLA Customer Report

Customer NIX_Production
Database ID 51



DATABASE PERFORMANCE NIXDB_Production

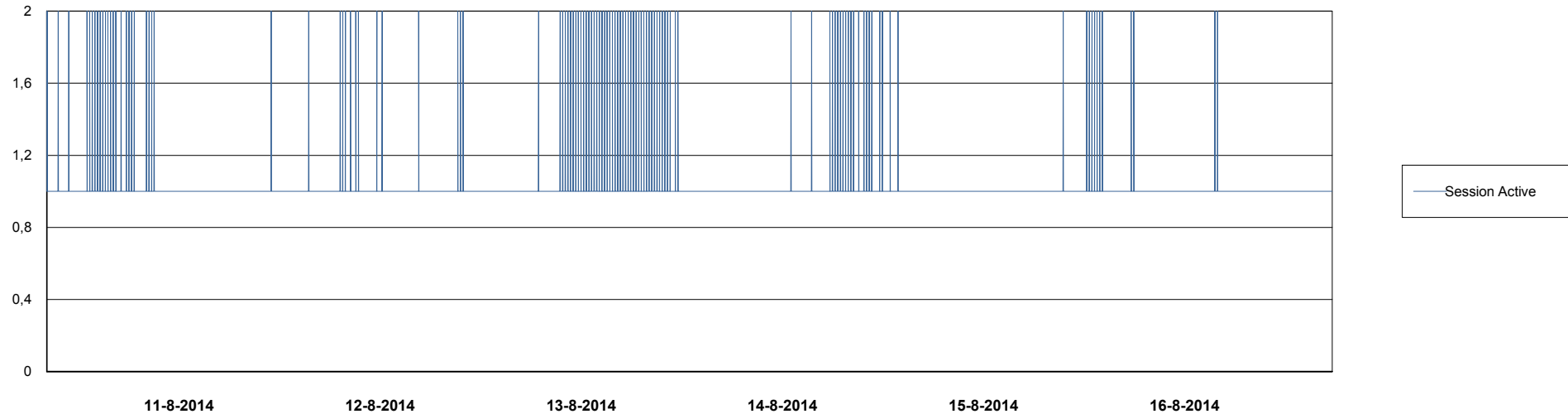
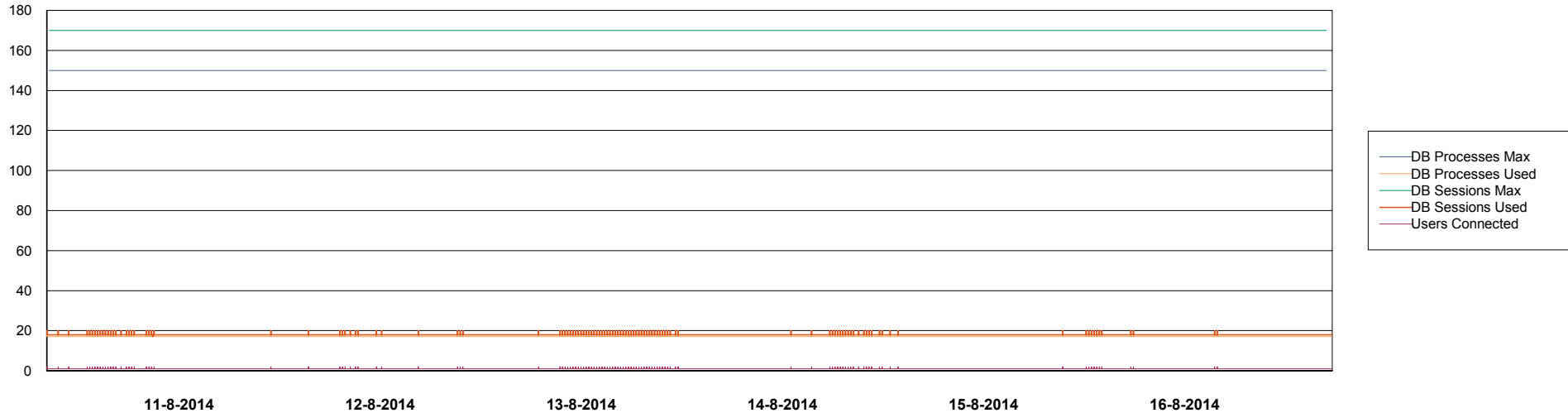


Weekly SLA Customer Report

Customer NIX_Production
Database ID 51



DATABASE PERFORMANCE NIXDB_Standby



Weekly SLA Customer Report

Customer NIX_Production
Database ID 51



=====
DATABASE TABLESPACES NIXDB_BI
=====

TOTAL DATABASE SIZE PER TABLESPACE

Date	Tablespace Name	Filesize (Gb)	Usedsize (Gb)	Percentage free
16-8-2014	ABSDATA	20	16	20
	INDX	40	26	35
15-8-2014	ABSDATA	20	16	20
	INDX	40	26	35
14-8-2014	ABSDATA	20	16	20
	INDX	40	26	35
13-8-2014	ABSDATA	20	16	20
	INDX	40	26	35
12-8-2014	ABSDATA	20	16	20
	INDX	40	26	35
11-8-2014	ABSDATA	20	16	20
	INDX	40	26	35
10-8-2014	ABSDATA	20	16	20
	INDX	40	26	35

Weekly SLA Customer Report

Customer NIX_Production
 Database ID 51



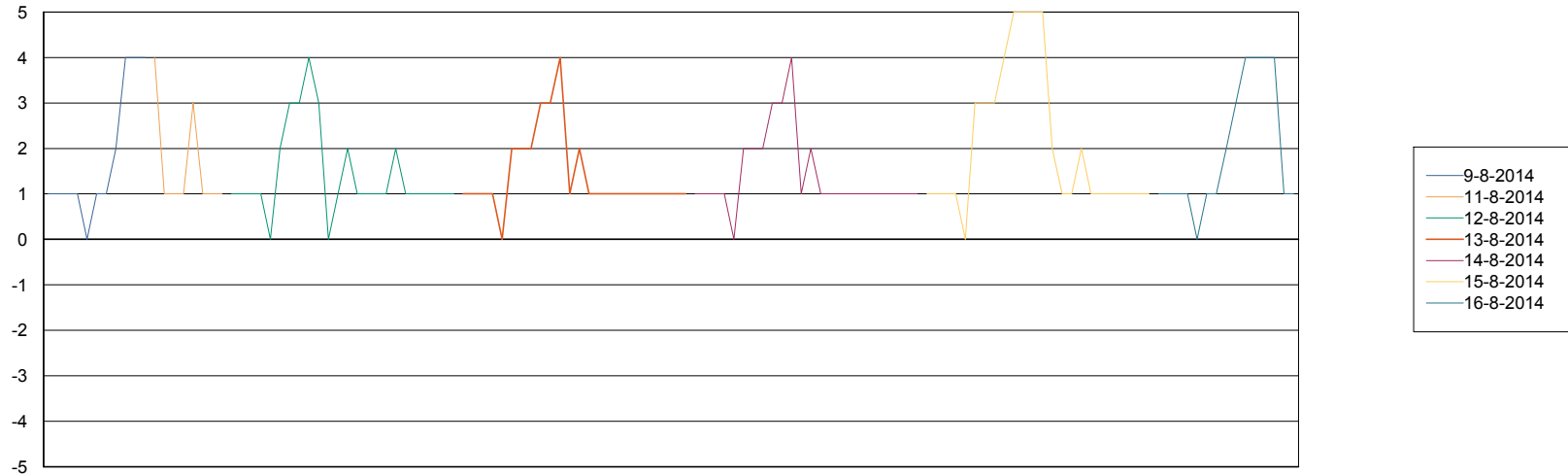
=====
 DATABASE TABLESPACES NIXDB_Production
 =====

TOTAL DATABASE SIZE PER TABLESPACE

Date	Tablespace Name	Filesize (Gb)	Usedsize (Gb)	Percentage free
16-8-2014	ABSDATA	40	27	33
	INDX	97	72	26
15-8-2014	ABSDATA	40	27	33
	INDX	97	72	26
14-8-2014	ABSDATA	40	27	33
	INDX	97	72	26
13-8-2014	ABSDATA	40	27	33
	INDX	97	72	26
12-8-2014	ABSDATA	40	27	33
	INDX	97	72	26
11-8-2014	ABSDATA	40	27	33
	INDX	97	72	26
10-8-2014	ABSDATA	40	27	33
	INDX	97	72	26

=====
 STANDBY DATABASE HEALTH NIX_Production
 =====

Recovery lag for last 7 days



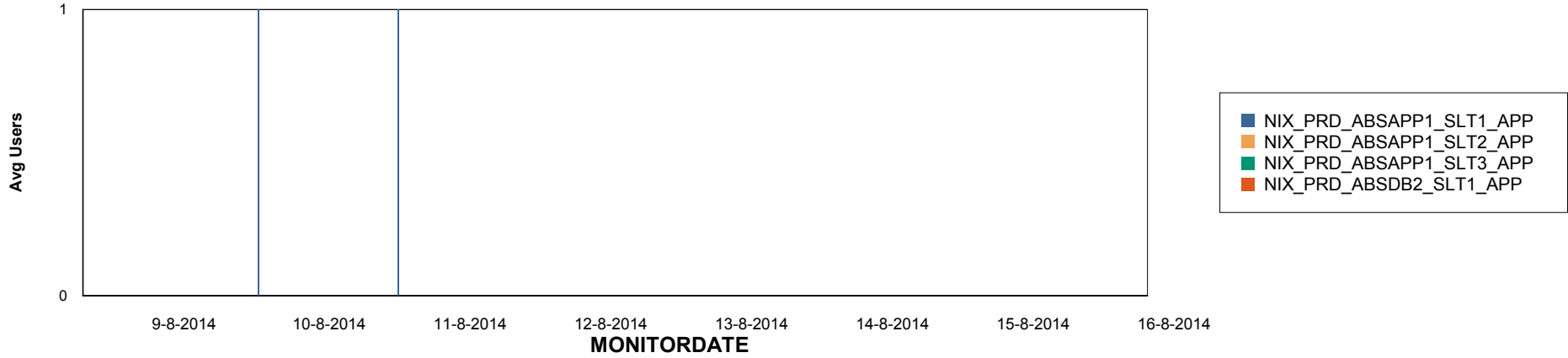
Weekly SLA Customer Report

Customer NIX_Production
Database ID 51

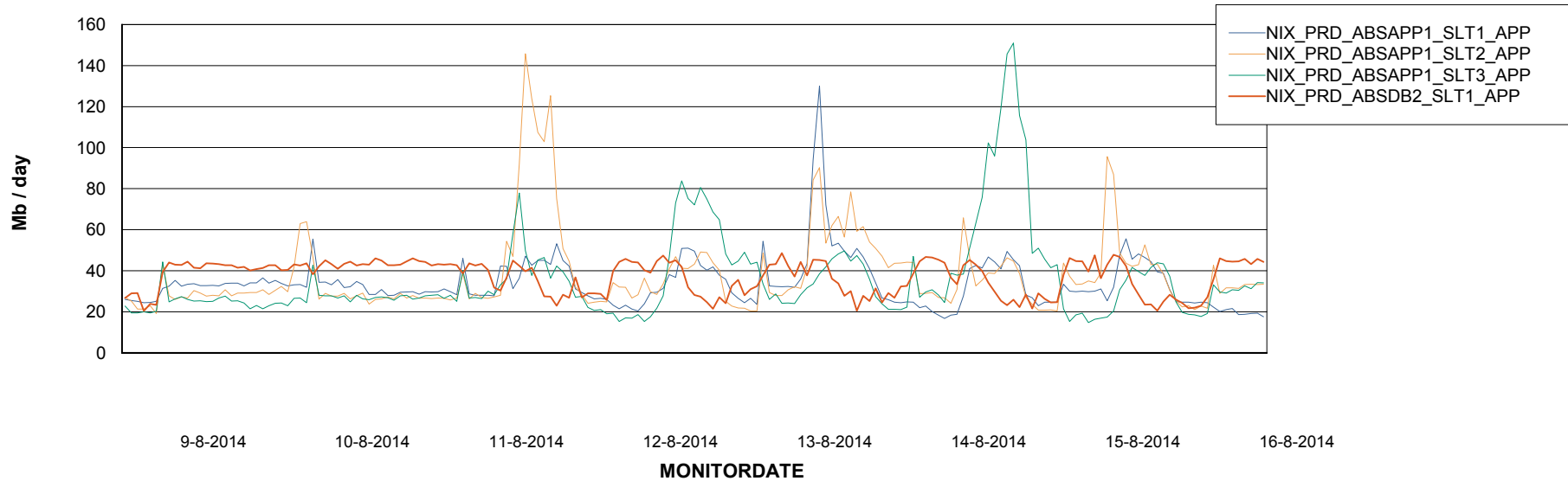


=====
ABSolute Application Server Services
=====

Disaster per ABS Server



Avg memory used per ABS Server Service



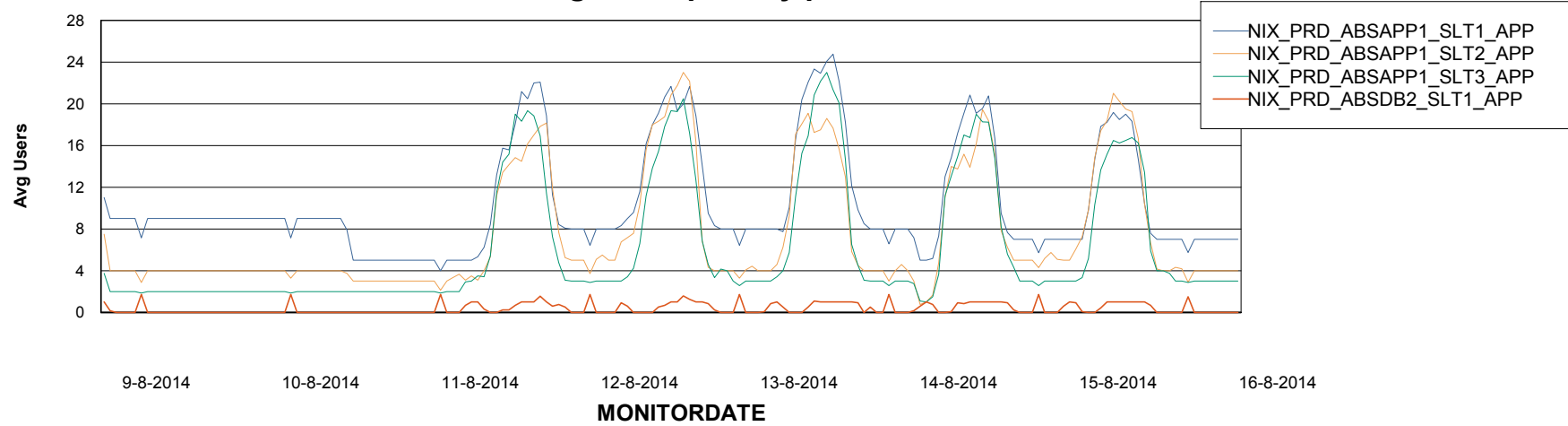
Weekly SLA Customer Report

Customer NIX_Production
Database ID 51



=====
ABSolute Application Server Services
=====

Avg users per day per ABS server



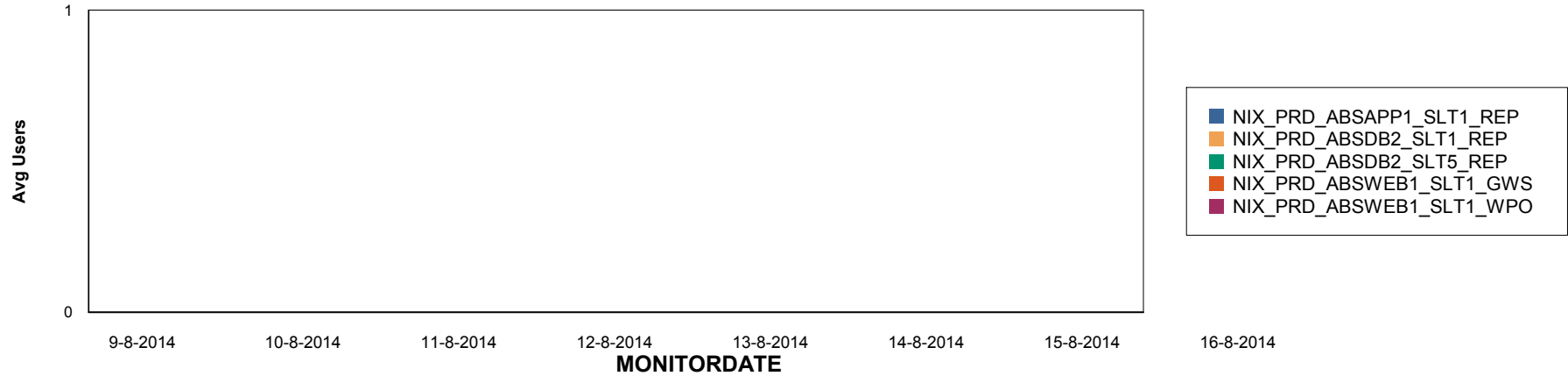
Weekly SLA Customer Report

Customer NIX_Production
Database ID 51

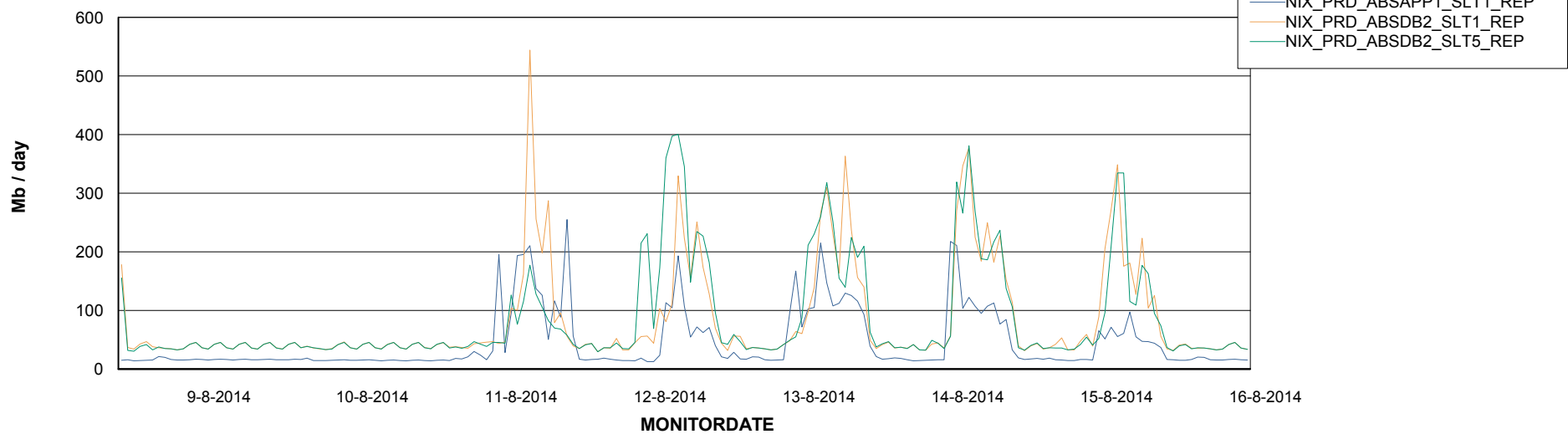


=====
ABSolute Application ReportServer Services
=====

Disaster per ReportServer



Avg memory used per ReportServer Service



Weekly SLA Customer Report

Customer NIX_Production
Database ID 51



Disaster per ABS component

