

Weekly SLA Customer Report

Customer LLG_Production
 Database ID 53



=====
 HARDDISK USAGE LLG_PRD_BI01
 =====

	Total disk space on C (GB)	Free disk space on C (GB)
16-8-2014	559	400
15-8-2014	559	400
14-8-2014	559	400
13-8-2014	559	400
12-8-2014	559	400
11-8-2014	559	400
10-8-2014	559	400

=====
 HARDDISK USAGE LLG_PRD_OR01
 =====

	Total disk space on C (GB)	Free disk space on C (GB)	Total disk space on D (GB)	Free disk space on D (GB)
16-8-2014	279	179	600	184
15-8-2014	279	179	600	188
14-8-2014	279	179	600	194
13-8-2014	279	179	600	199
12-8-2014	279	179	600	204
11-8-2014	279	179	600	212
10-8-2014	279	179	600	229

Weekly SLA Customer Report

Customer LLG_Production
 Database ID 53



=====

HARDDISK USAGE LLG_PRD_OR2

=====

	Total disk space on C (GB)	Free disk space on C (GB)	Total disk space on D (GB)	Free disk space on D (GB)
16-8-2014	293	250	545	195
15-8-2014	293	250	545	195
14-8-2014	293	250	545	196
13-8-2014	293	250	545	197
12-8-2014	293	250	545	198
11-8-2014	293	250	545	204
10-8-2014	293	250	545	214

=====

HARDDISK USAGE LLG_PRD_vABS01

=====

	Total disk space on C (GB)	Free disk space on C (GB)	Total disk space on D (GB)	Free disk space on D (GB)
16-8-2014	150	74	150	147
15-8-2014	150	74	150	147
14-8-2014	150	51	150	147
13-8-2014	150	56	150	147
12-8-2014	150	63	150	147
11-8-2014	150	64	150	147
10-8-2014	150	68	150	147

Weekly SLA Customer Report

Customer LLG_Production
Database ID 53



=====
HARDDISK USAGE LLG_PRD_vABS02
=====

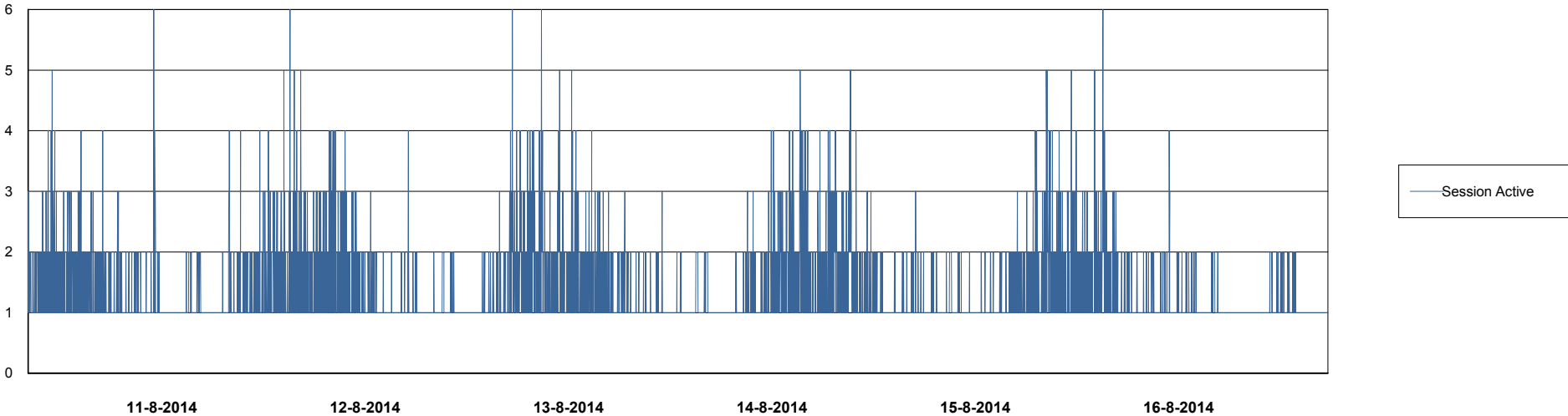
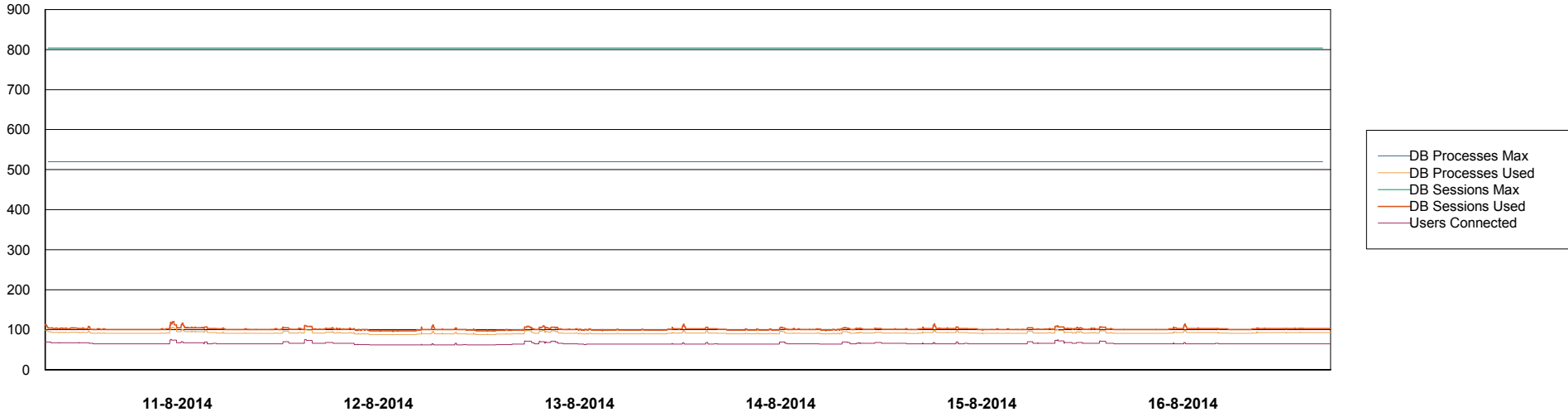
	Total disk space on C (GB)	Free disk space on C (GB)	Total disk space on D (GB)	Free disk space on D (GB)
16-8-2014	150	40	150	143
15-8-2014	150	40	150	143
14-8-2014	150	58	150	143
13-8-2014	150	69	150	143
12-8-2014	150	69	150	143
11-8-2014	150	70	150	143
10-8-2014	150	70	150	143

Weekly SLA Customer Report

Customer LLG_Production
Database ID 53



DATABASE PERFORMANCE LLGDB_Production

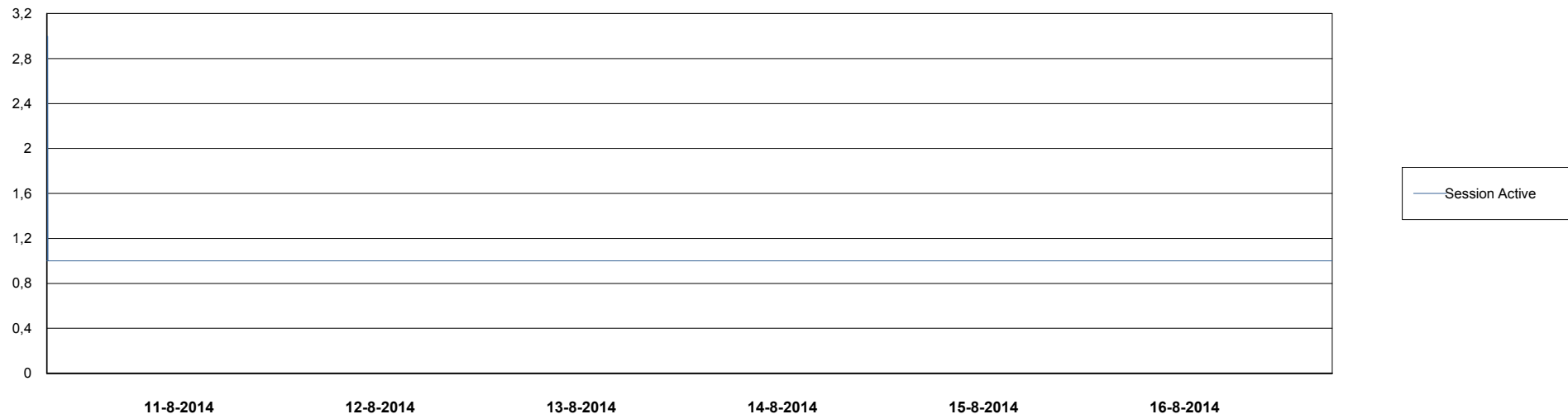
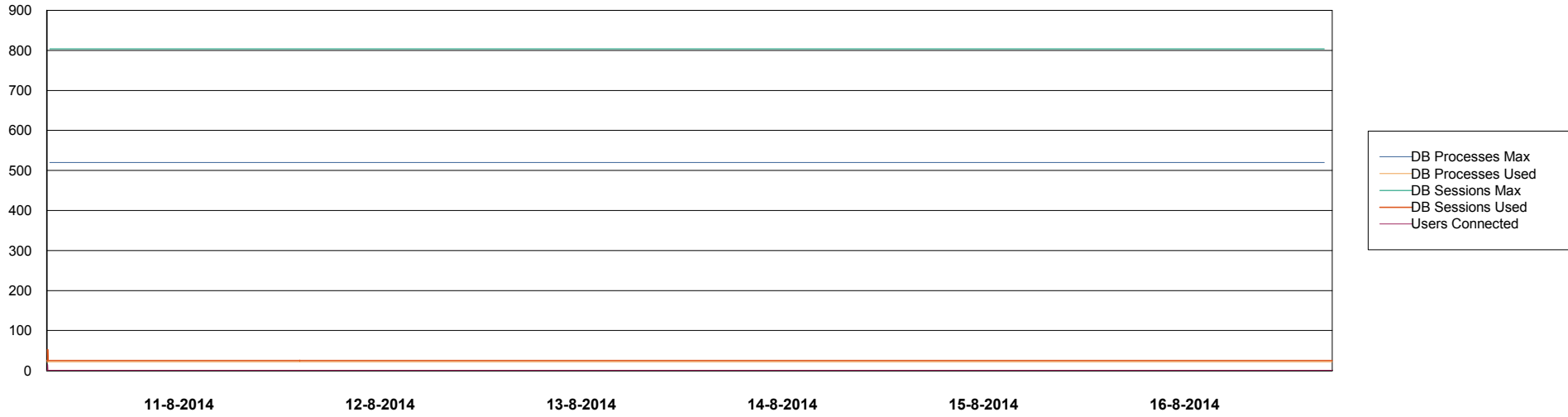


Weekly SLA Customer Report

Customer LLG_Production
Database ID 53



DATABASE PERFORMANCE LLGDB_Standby



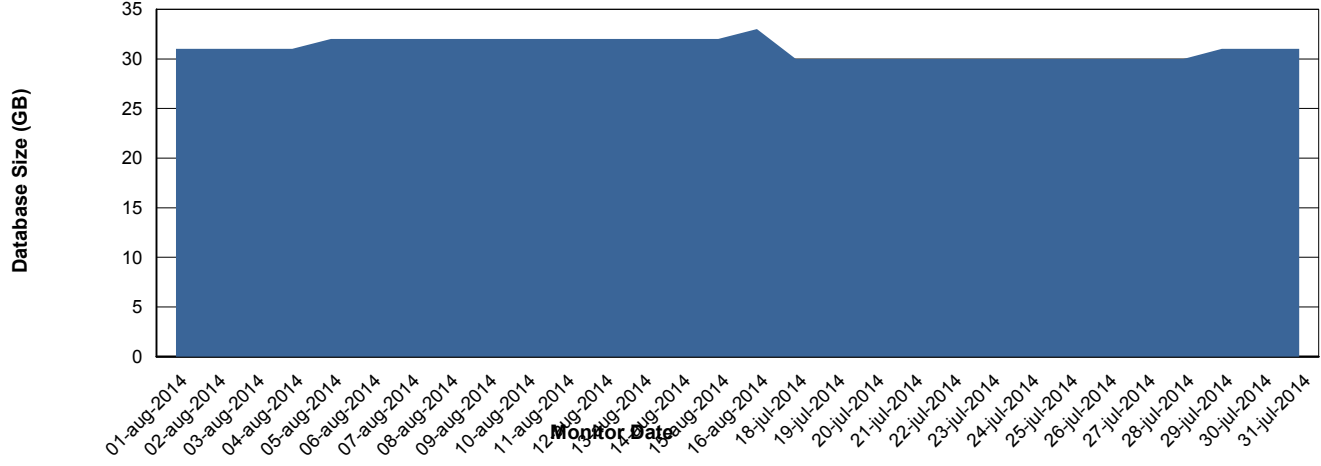
Weekly SLA Customer Report

Customer LLG_Production
 Database ID 53



=====
 DATABASE SIZE LLGDB_Production
 =====

Database growth over last month



=====
 DATABASE TABLESPACES LLGDB_Production
 =====

TOTAL DATABASE SIZE PER TABLESPACE

Date	Tablespace Name	Filesize (Gb)	Usedsize (Gb)	Percentage free
16-8-2014	ABSDATA	20	11	45
	INDX	40	19	53
15-8-2014	ABSDATA	20	11	45
	INDX	40	19	53
14-8-2014	ABSDATA	20	11	45
	INDX	40	19	53
13-8-2014	ABSDATA	20	11	45
	INDX	40	19	53
12-8-2014	ABSDATA	20	11	45
	INDX	40	19	53
11-8-2014	ABSDATA	20	11	45
	INDX	40	19	53
10-8-2014	ABSDATA	20	11	45
	INDX	40	19	53

Weekly SLA Customer Report

Customer LLG_Production
Database ID 53



=====
STANDBY DATABASE HEALTH LLG_Production
=====

Recovery lag for last 7 days



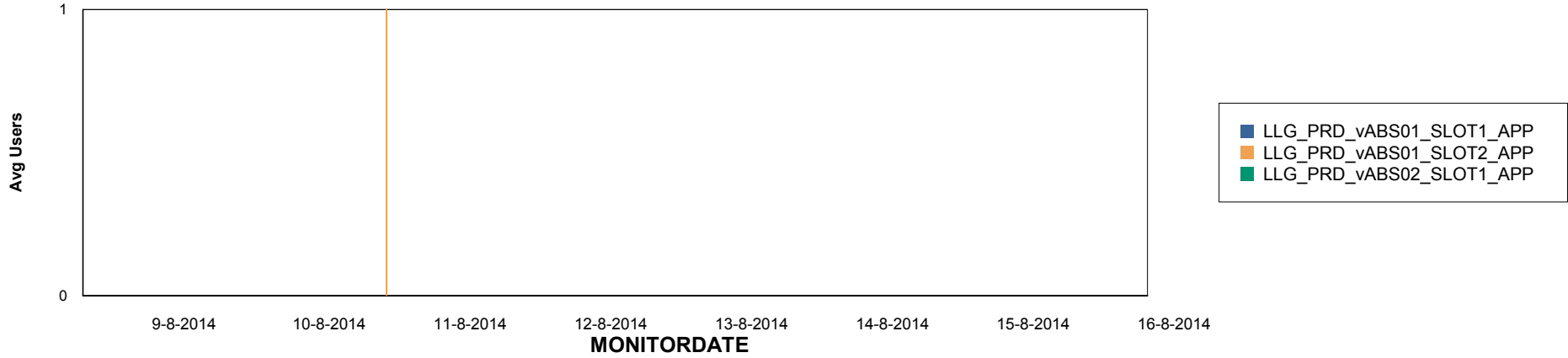
Weekly SLA Customer Report

Customer LLG_Production
Database ID 53

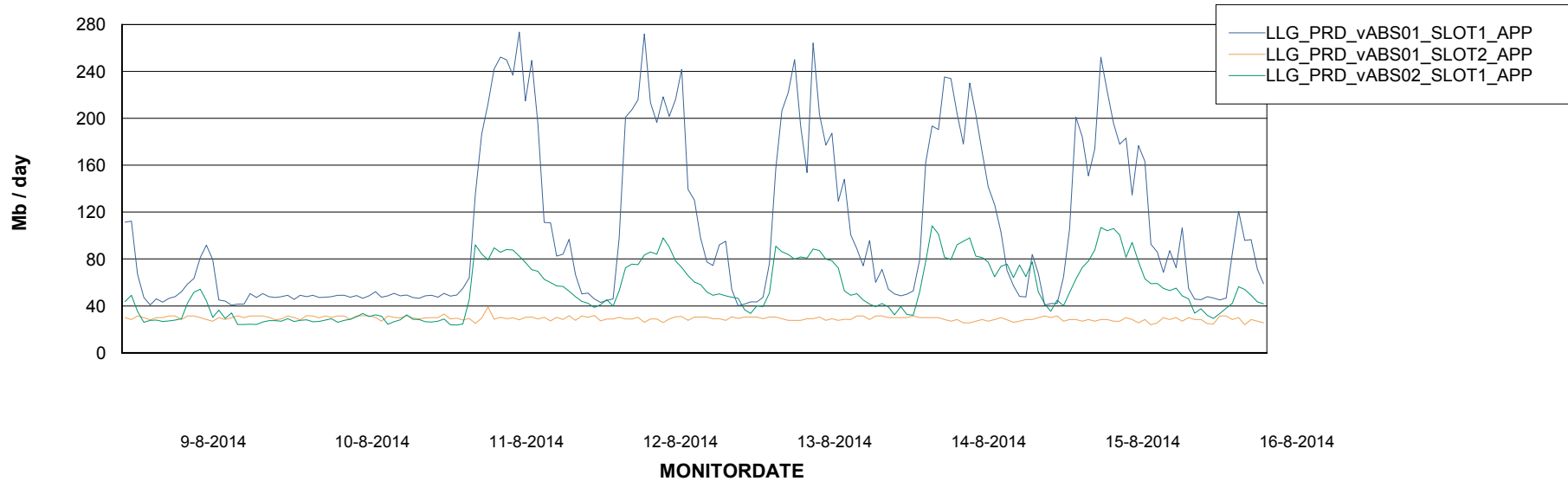


ABSolute Application Server Services

Disaster per ABS Server



Avg memory used per ABS Server Service



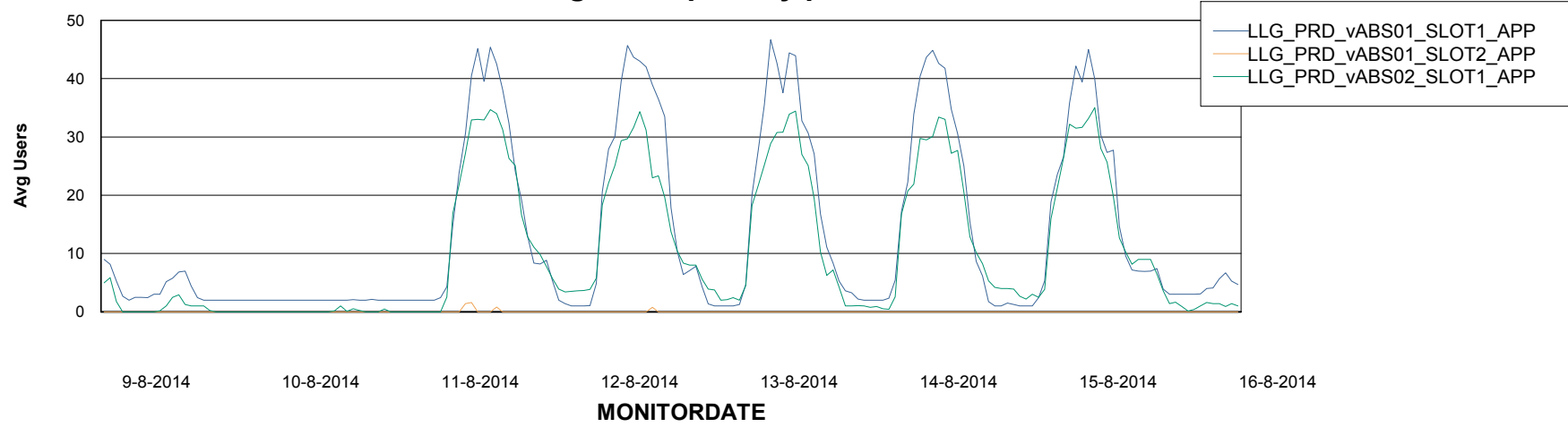
Weekly SLA Customer Report

Customer LLG_Production
Database ID 53



=====
ABSolute Application Server Services
=====

Avg users per day per ABS server



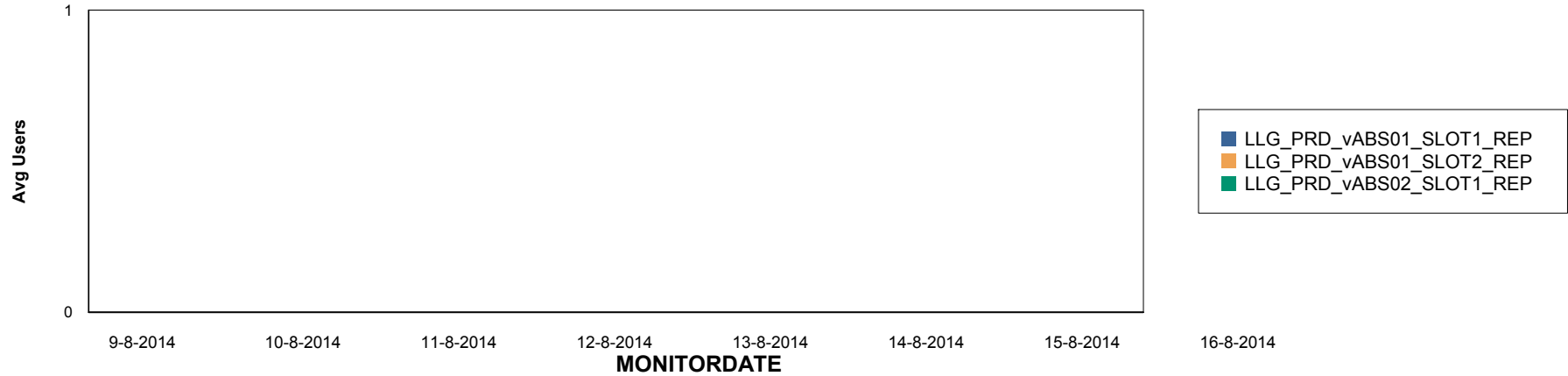
Weekly SLA Customer Report

Customer LLG_Production
Database ID 53

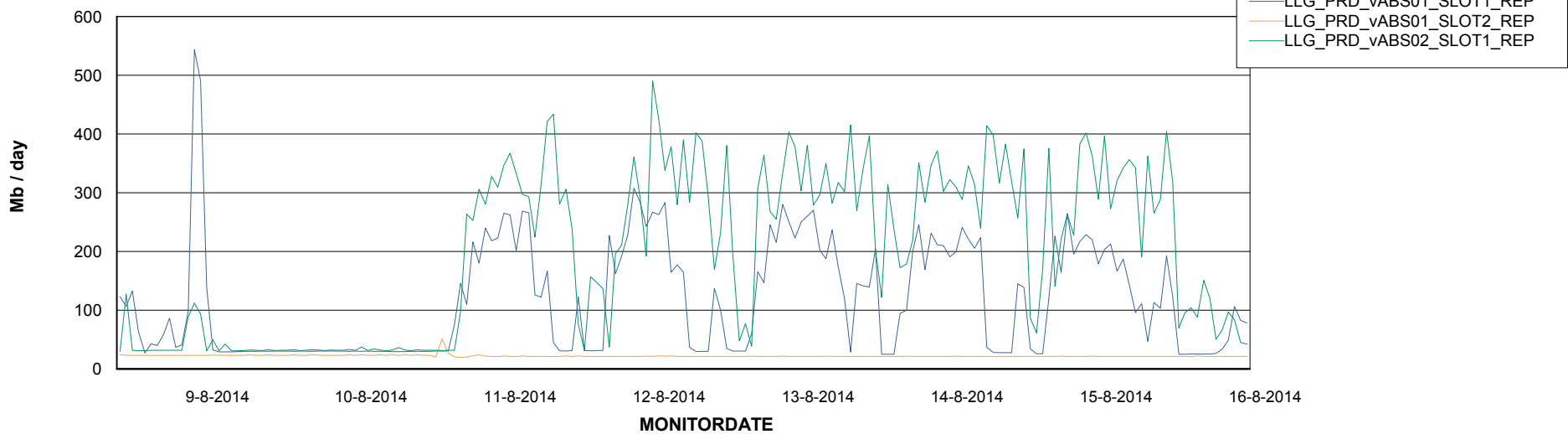


=====
ABSolute Application ReportServer Services
=====

Disaster per ReportServer



Avg memory used per ReportServer Service



Weekly SLA Customer Report

Customer LLG_Production
Database ID 53



Disaster per ABS component

