

Weekly SLA Customer Report

Customer JWR Production
Database ID 43



=====
HARDDISK USAGE JWR_PRD_JWR-ABS-01
=====

	Used disk space on / (GB)	Total disk space on / (GB)	Free disk space on / (GB)
16-8-2014	29	49	18
15-8-2014	28	49	19
14-8-2014	28	49	19
13-8-2014	28	49	18
12-8-2014	28	49	19
11-8-2014	28	49	18
10-8-2014	29	49	18

=====
HARDDISK USAGE JWR_PRD_JWR-ABS-02
=====

	Used disk space on / (GB)	Total disk space on / (GB)	Free disk space on / (GB)
16-8-2014	25	49	21
15-8-2014	25	49	22
14-8-2014	25	49	22
13-8-2014	25	49	22
12-8-2014	25	49	22
11-8-2014	25	49	22
10-8-2014	25	49	21

Weekly SLA Customer Report

Customer JWR Production
 Database ID 43



=====

HARDDISK USAGE JWR_PRD_JWR-ODB-01

=====

	Used disk space on / (GB)	Total disk space on / (GB)	Free disk space on / (GB)
16-8-2014	71	90	14
15-8-2014	72	90	14
14-8-2014	72	90	13
13-8-2014	72	90	13
12-8-2014	72	90	13
11-8-2014	72	90	13
10-8-2014	72	90	14

=====

HARDDISK USAGE JWR_PRD_JWR-ODB-02

=====

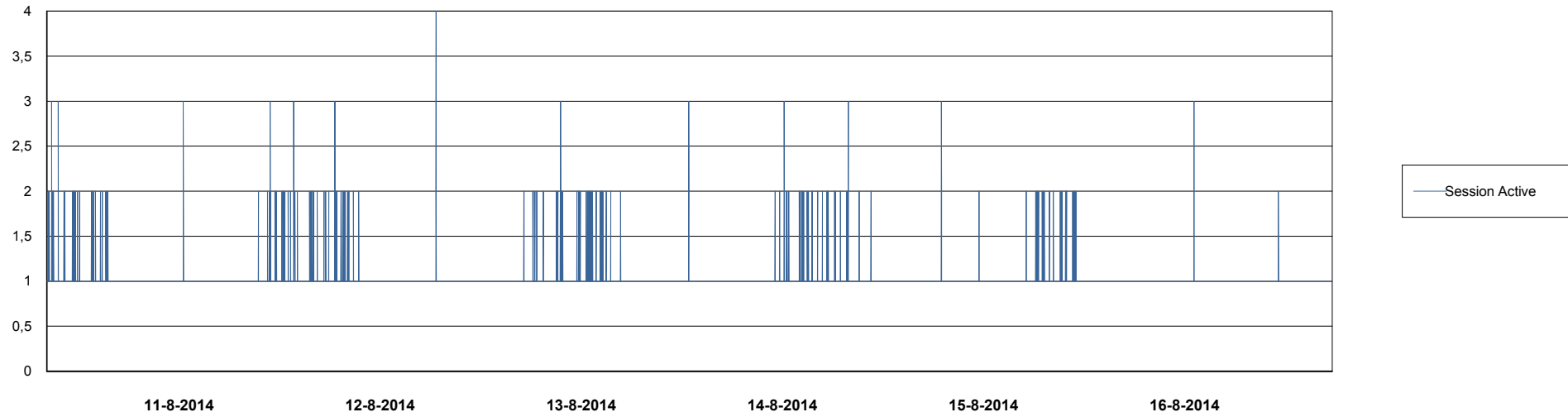
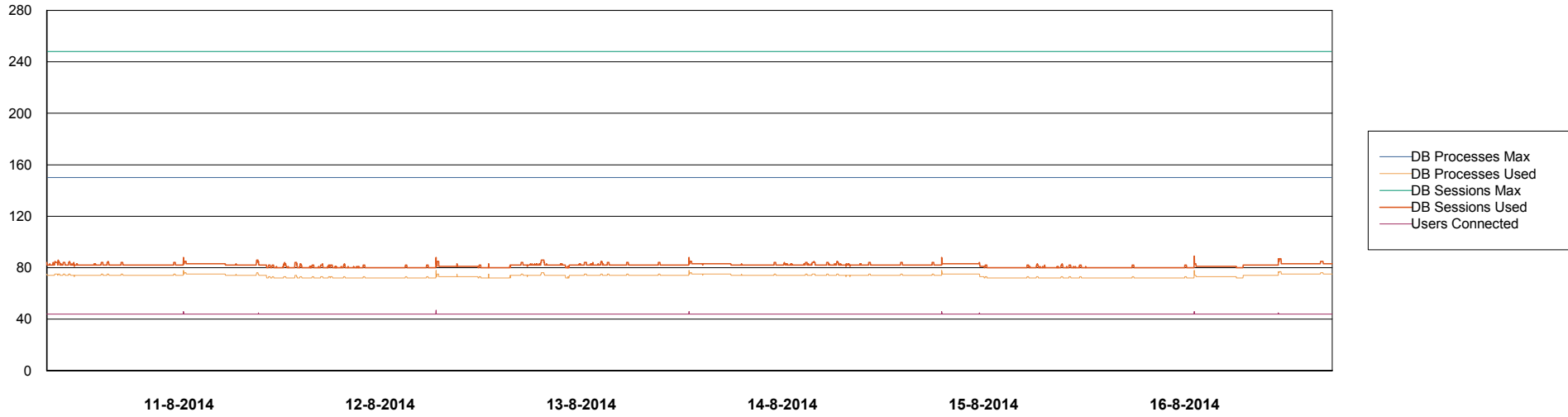
	Used disk space on / (GB)	Total disk space on / (GB)	Free disk space on / (GB)
16-8-2014	91	138	40
15-8-2014	91	138	40
14-8-2014	91	138	39
13-8-2014	91	138	40
12-8-2014	91	138	39
11-8-2014	92	138	39
10-8-2014	91	138	40

Weekly SLA Customer Report

Customer JWR Production
Database ID 43



DATABASE PERFORMANCE JWRDB_Production



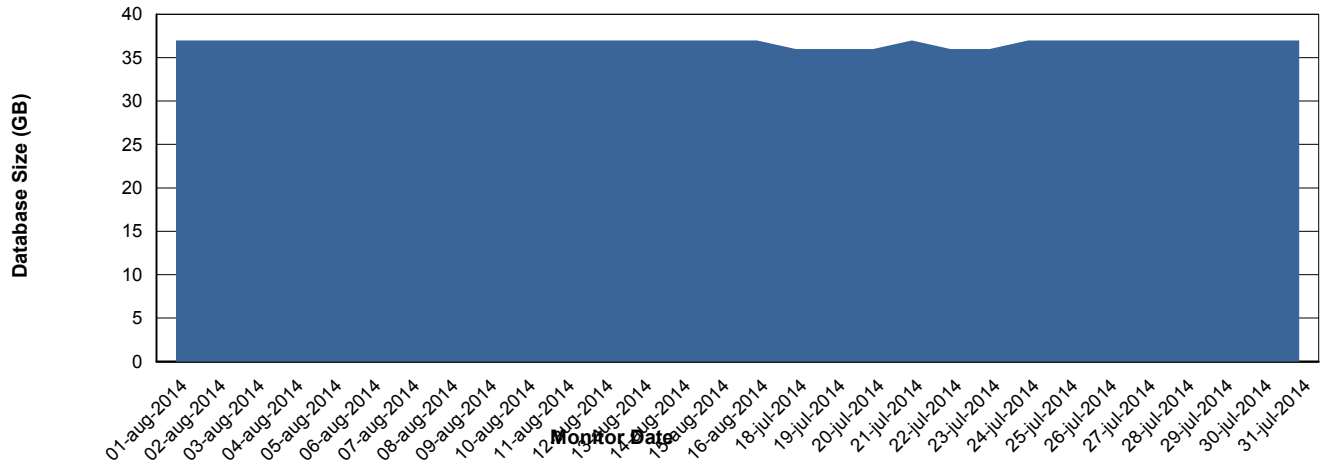
Weekly SLA Customer Report

Customer JWR Production
 Database ID 43



=====
 DATABASE SIZE JWRDB_Production
 =====

Database growth over last month



=====
 DATABASE TABLESPACES JWRDB_Production
 =====

TOTAL DATABASE SIZE PER TABLESPACE

Date	Tablespace Name	Filesize (Gb)	Usedsize (Gb)	Percentage free
16-8-2014	ABSDATA	15	11	27
	INDX	30	25	17
15-8-2014	ABSDATA	15	11	27
	INDX	30	25	17
14-8-2014	ABSDATA	15	11	27
	INDX	30	25	17
13-8-2014	ABSDATA	15	11	27
	INDX	30	25	17
12-8-2014	ABSDATA	15	11	27
	INDX	30	25	17
11-8-2014	ABSDATA	15	11	27
	INDX	30	25	17
10-8-2014	ABSDATA	15	11	27
	INDX	30	25	17

Weekly SLA Customer Report

Customer JWR Production
Database ID 43



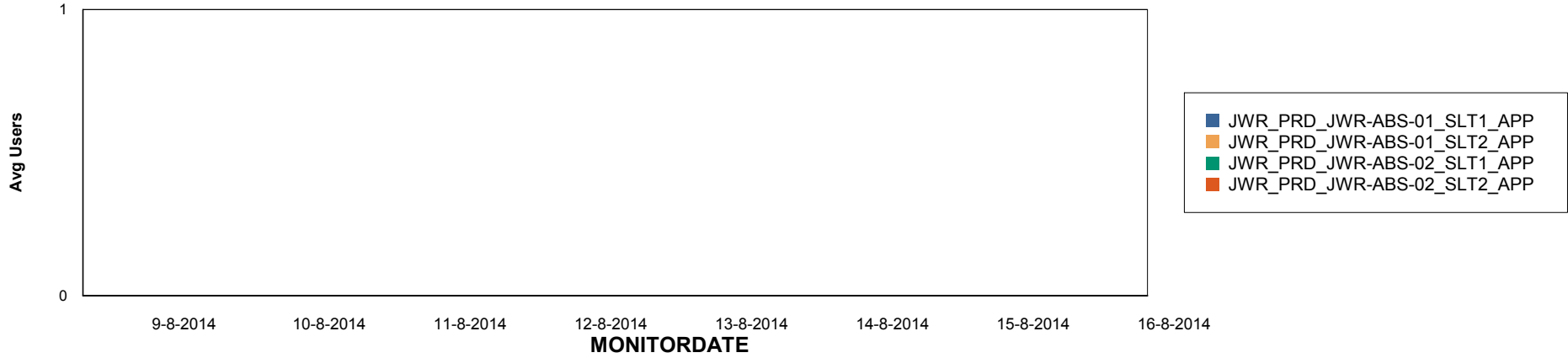
Weekly SLA Customer Report

Customer JWR Production
Database ID 43

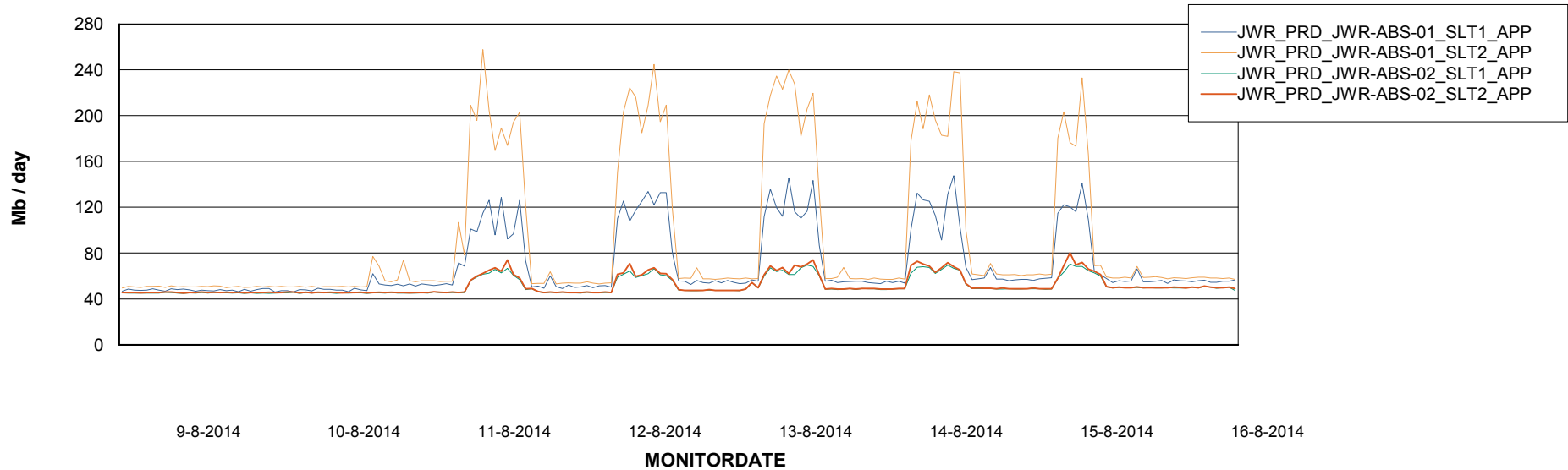


ABSolute Application Server Services

Disaster per ABS Server



Avg memory used per ABS Server Service



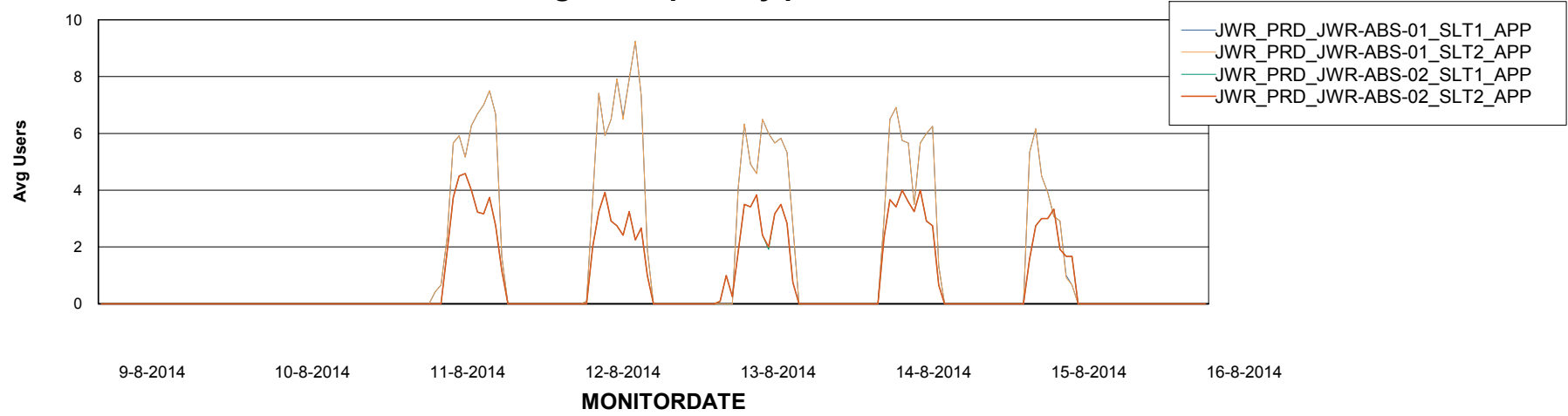
Weekly SLA Customer Report

Customer JWR Production
Database ID 43



=====
ABSolute Application Server Services
=====

Avg users per day per ABS server



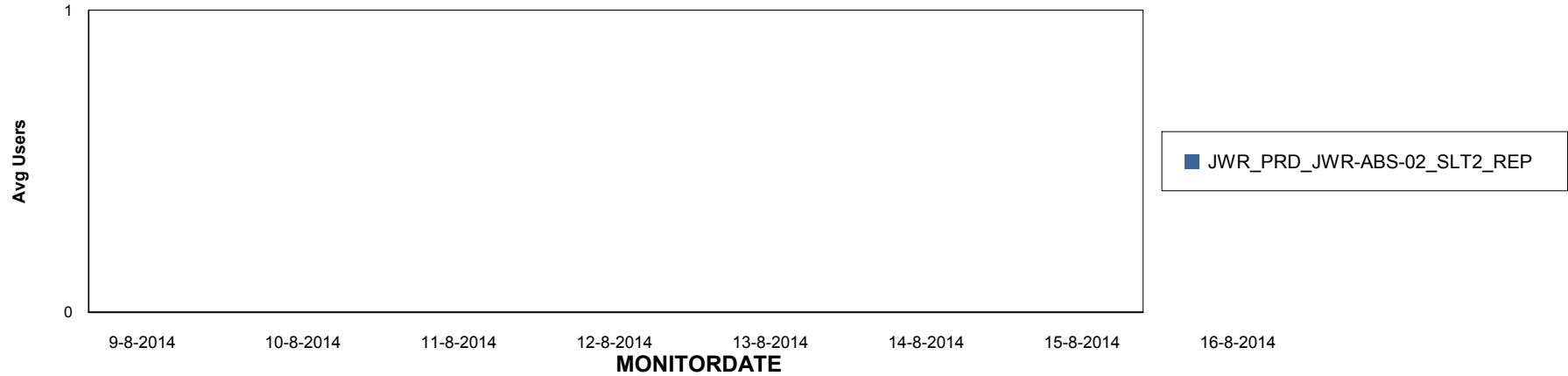
Weekly SLA Customer Report

Customer JWR Production
Database ID 43

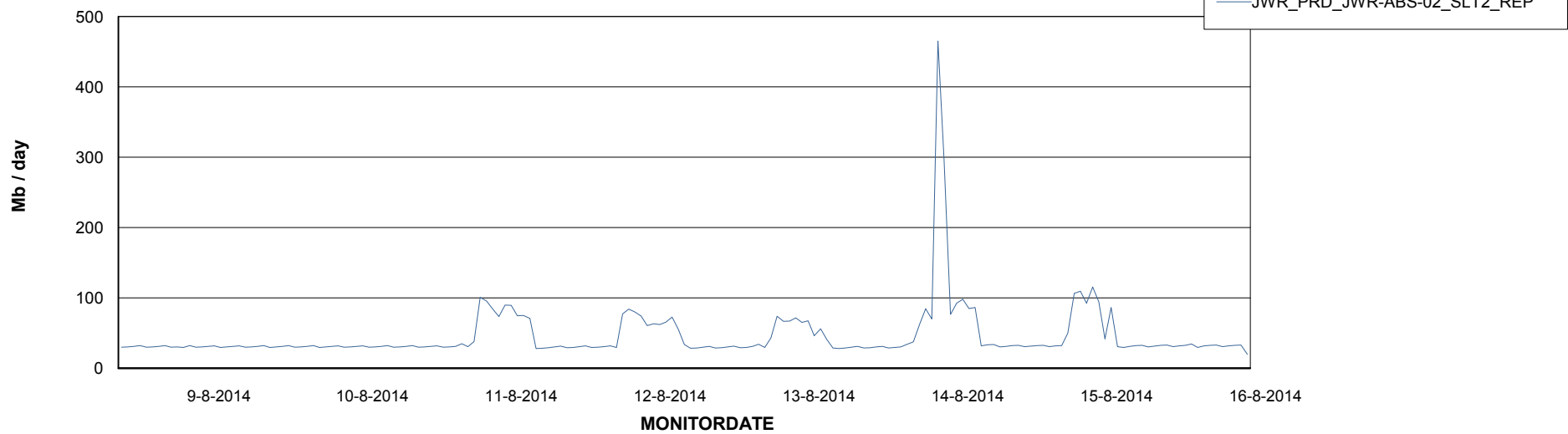


=====
ABSolute Application ReportServer Services
=====

Disaster per ReportServer



Avg memory used per ReportServer Service



Weekly SLA Customer Report

Customer JWR Production
Database ID 43



Disaster per ABS component

