

## Weekly SLA Customer Report

Customer      BCH Production  
 Database ID    28



=====  
 HARDDISK USAGE    BCH\_PRD\_ABSAPP1  
 =====

	Total disk space on C (GB)	Free disk space on C (GB)	Total disk space on D (GB)	Free disk space on D (GB)
16-8-2014	45	10	30	30
15-8-2014	45	10	30	30
14-8-2014	45	10	30	30
13-8-2014	45	10	30	30
12-8-2014	45	10	30	30
11-8-2014	45	10	30	30

=====  
 HARDDISK USAGE    BCH\_PRD\_ABSAPP2  
 =====

	Total disk space on C (GB)	Free disk space on C (GB)	Total disk space on D (GB)	Free disk space on D (GB)
16-8-2014	45	10	30	30
15-8-2014	45	10	30	30
14-8-2014	45	10	30	30
13-8-2014	45	10	30	30
12-8-2014	45	10	30	30
11-8-2014	45	10	30	30

=====  
 HARDDISK USAGE    BCH\_PRD\_ABSAPP3  
 =====

## Weekly SLA Customer Report

Customer      BCH Production  
 Database ID    28



	Total disk space on C (GB)	Free disk space on C (GB)	Total disk space on D (GB)	Free disk space on D (GB)
16-8-2014	45	12	30	30
15-8-2014	45	12	30	30
14-8-2014	45	12	30	30
13-8-2014	45	12	30	30
12-8-2014	45	12	30	30
11-8-2014	45	12	30	30

=====  
 HARDDISK USAGE    BCH\_PRD\_ABSWEB1  
 =====

	Used disk space on C (GB)	Total disk space on C (GB)	Free disk space on C (GB)
16-8-2014	30	45	15
15-8-2014	30	45	15
14-8-2014	30	45	15
13-8-2014	30	45	15
12-8-2014	30	45	15
11-8-2014	30	45	15

=====  
 HARDDISK USAGE    BCH\_PRD\_ABSWEB2  
 =====

## Weekly SLA Customer Report

Customer      BCH Production  
 Database ID    28



	Used disk space on C (GB)	Total disk space on C (GB)	Free disk space on C (GB)
16-8-2014	29	45	16
15-8-2014	29	45	16
14-8-2014	29	45	16
13-8-2014	29	45	16
12-8-2014	29	45	16
11-8-2014	29	45	16

=====  
 HARDDISK USAGE    BCH\_PRD\_ORCDB1  
 =====

	Total disk space on C (GB)	Free disk space on C (GB)	Total disk space on D (GB)	Free disk space on D (GB)
16-8-2014	278	162	278	91
15-8-2014	278	163	278	94
14-8-2014	278	163	278	96
13-8-2014	278	163	278	74
12-8-2014	278	163	278	46
11-8-2014	278	164	278	48

=====  
 HARDDISK USAGE    BCH\_PRD\_ORCDB2  
 =====

## Weekly SLA Customer Report

Customer      BCH Production  
 Database ID    28



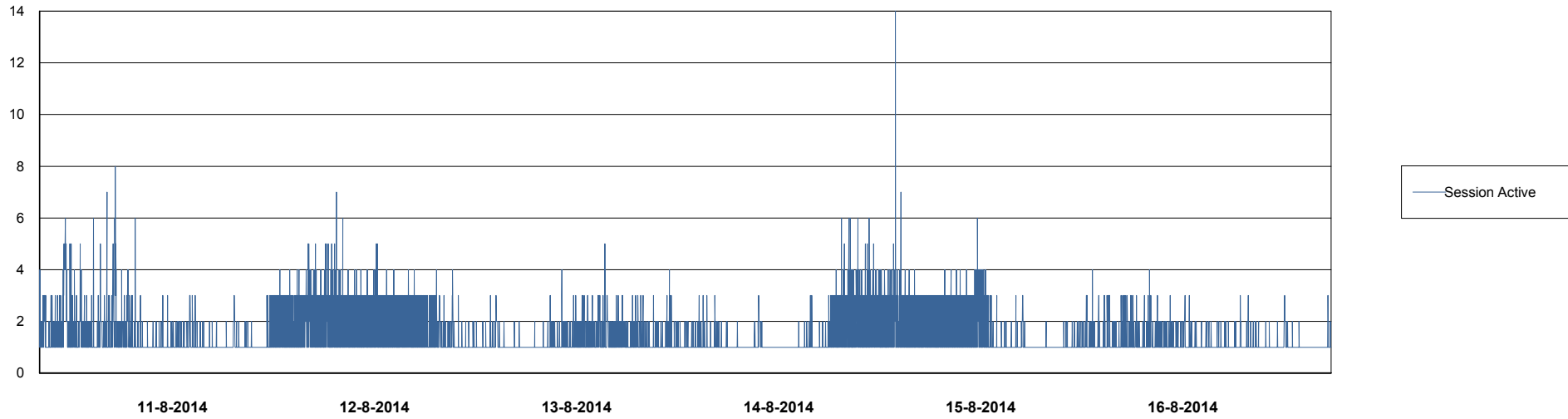
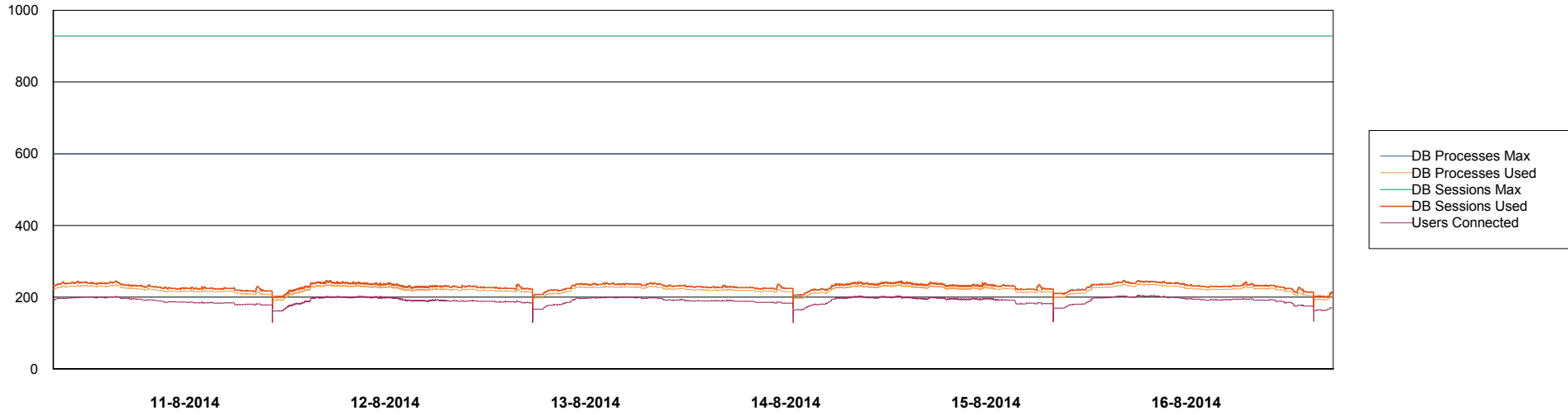
	Total disk space on C (GB)	Free disk space on C (GB)	Total disk space on D (GB)	Free disk space on D (GB)
<b>16-8-2014</b>	278	196	278	88
<b>15-8-2014</b>	278	196	278	91
<b>14-8-2014</b>	278	196	278	93
<b>13-8-2014</b>	278	196	278	71
<b>12-8-2014</b>	278	196	278	43
<b>11-8-2014</b>	278	196	278	45

# Weekly SLA Customer Report

Customer BCH Production  
Database ID 28



DATABASE PERFORMANCE BCHDB\_Production

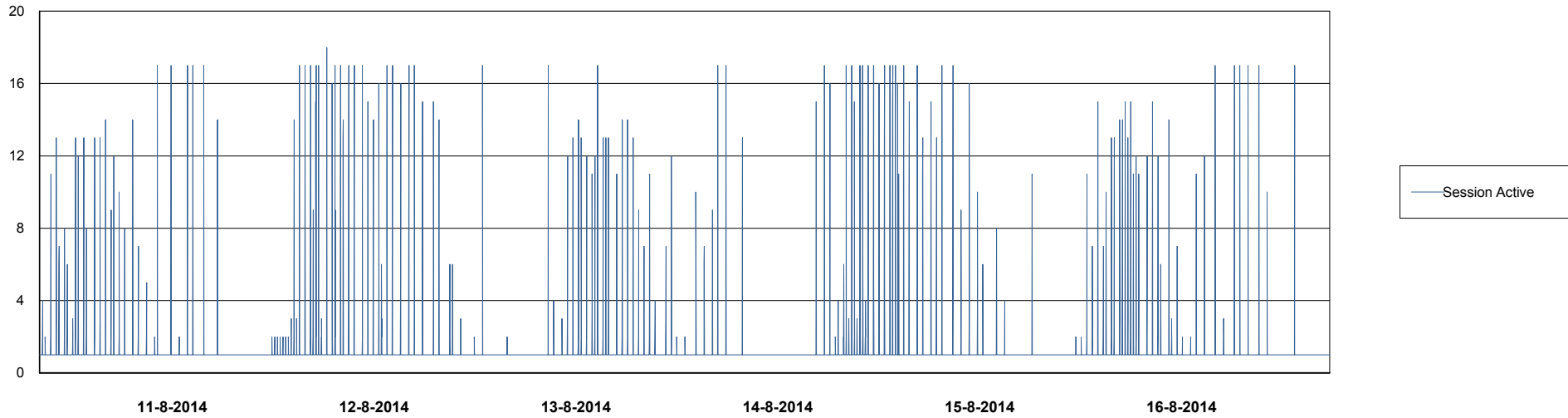
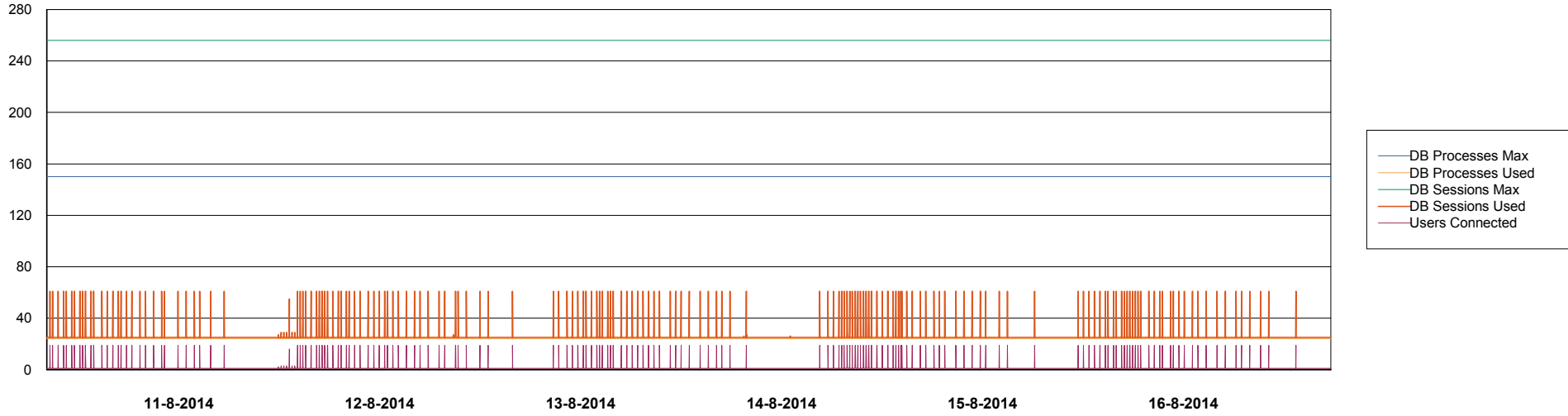


# Weekly SLA Customer Report

Customer BCH Production  
Database ID 28



## DATABASE PERFORMANCE BCHDB\_Standby



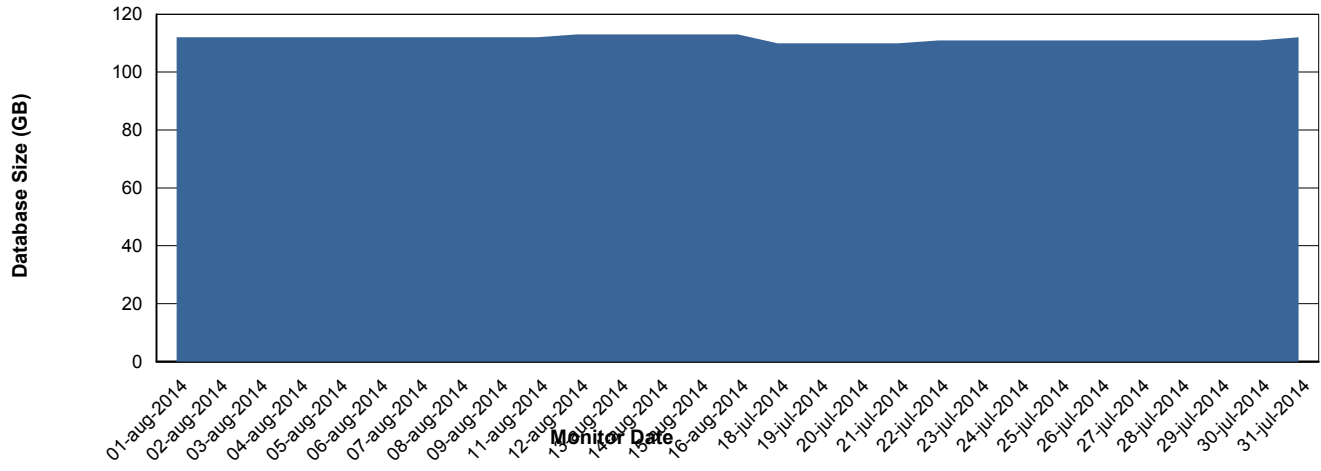
# Weekly SLA Customer Report

Customer BCH Production  
 Database ID 28



=====  
 DATABASE SIZE BCHDB\_Production  
 =====

## Database growth over last month



=====  
 DATABASE TABLESPACES BCHDB\_Production  
 =====

### TOTAL DATABASE SIZE PER TABLESPACE

Date	Tablespace Name	Filesize (Gb)	Usedsize (Gb)	Percentage free
16-8-2014	ABSDATA	26	0	100
	INDX	104	91	13
15-8-2014	ABSDATA	26	0	100
	INDX	104	90	13
14-8-2014	ABSDATA	26	0	100
	INDX	104	89	14
13-8-2014	ABSDATA	26	0	100
	INDX	104	89	14
12-8-2014	ABSDATA	26	0	100
	INDX	104	89	14
11-8-2014	ABSDATA	26	0	100
	INDX	104	89	14

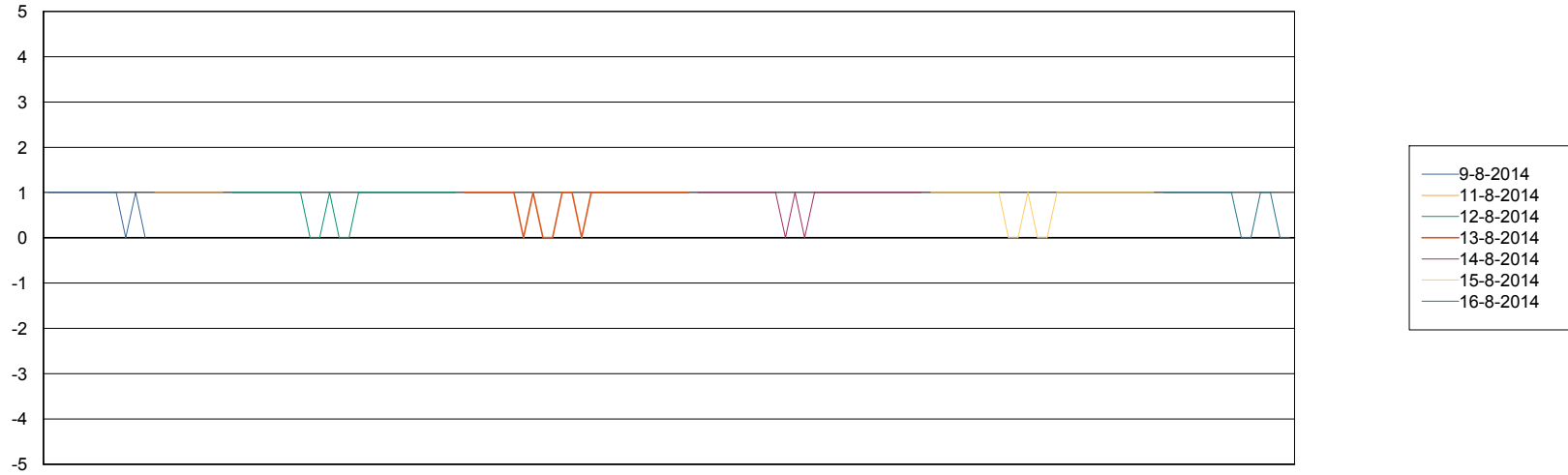
# Weekly SLA Customer Report

Customer BCH Production  
Database ID 28



=====  
STANDBY DATABASE HEALTH BCH Production  
=====

### Recovery lag for last 7 days



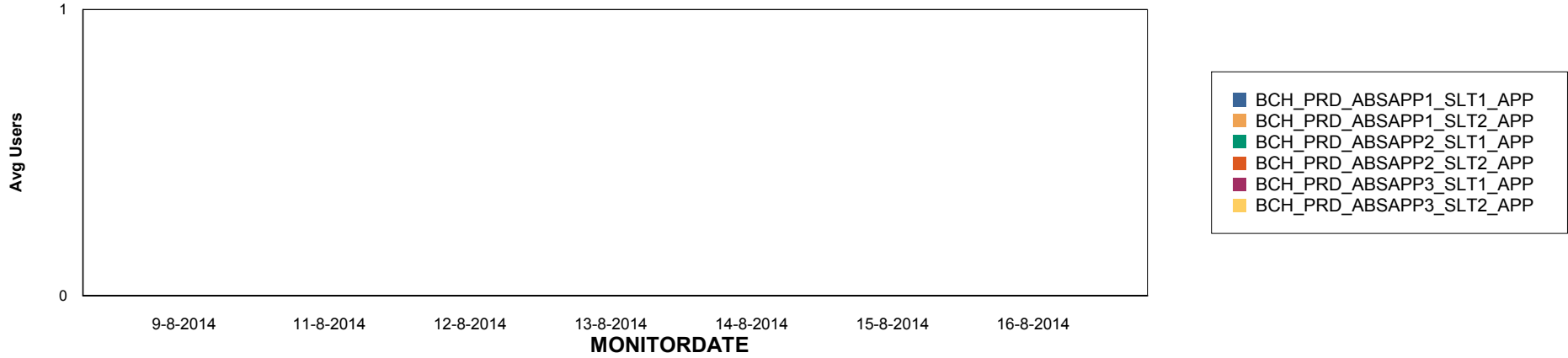
# Weekly SLA Customer Report

Customer BCH Production  
Database ID 28

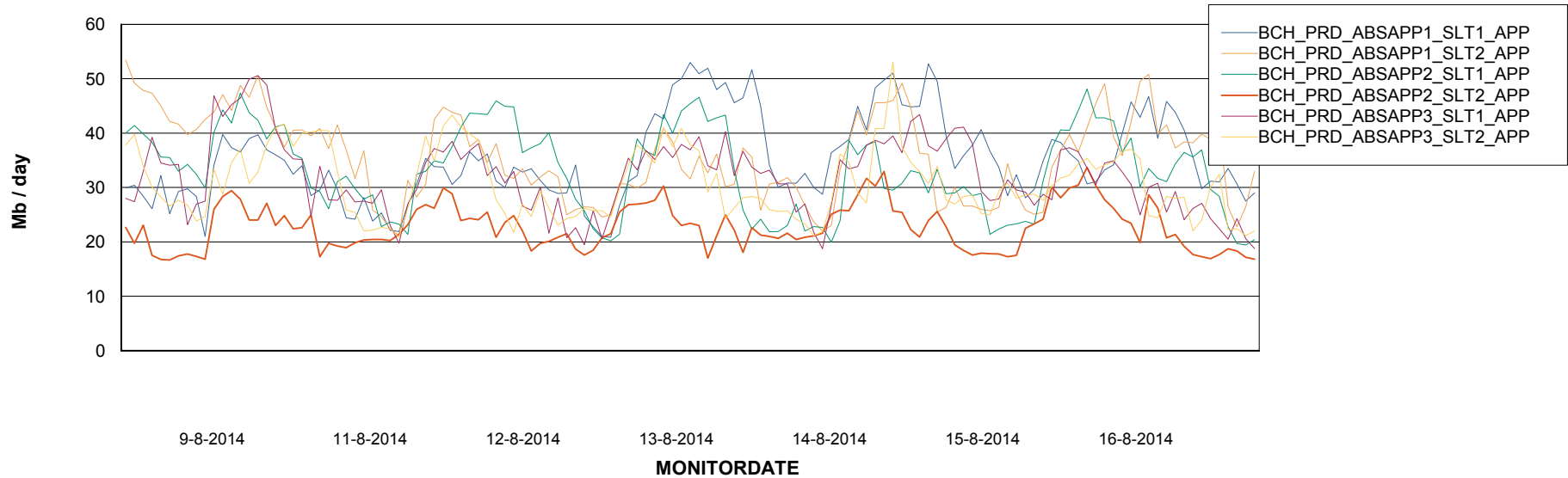


=====  
ABSolute Application Server Services  
=====

## Disaster per ABS Server



## Avg memory used per ABS Server Service



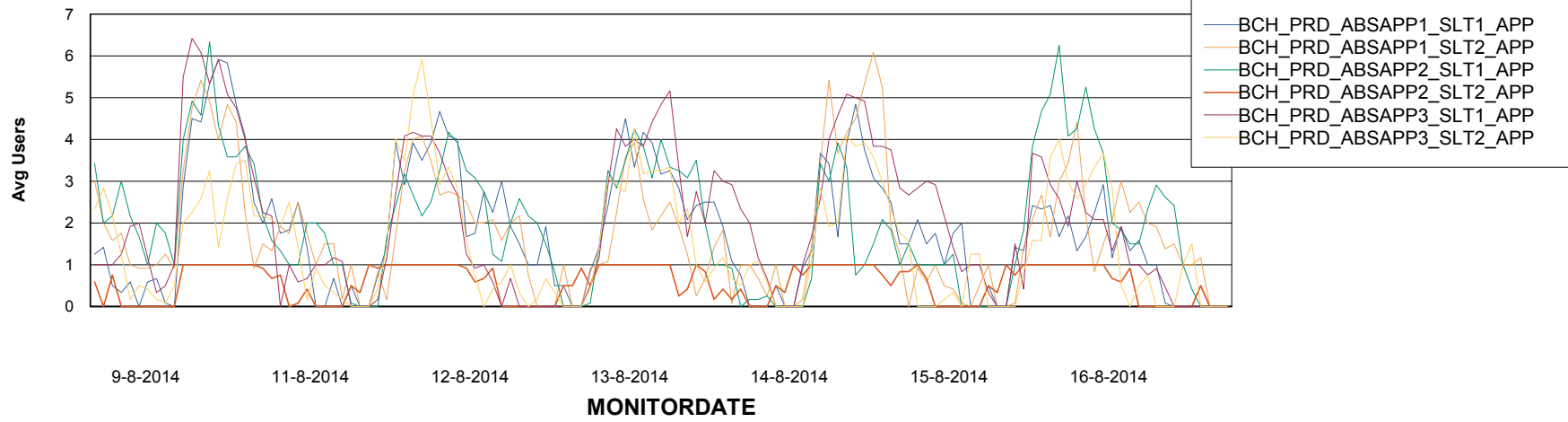
# Weekly SLA Customer Report

Customer BCH Production  
Database ID 28



=====  
ABSolute Application Server Services  
=====

### Avg users per day per ABS server



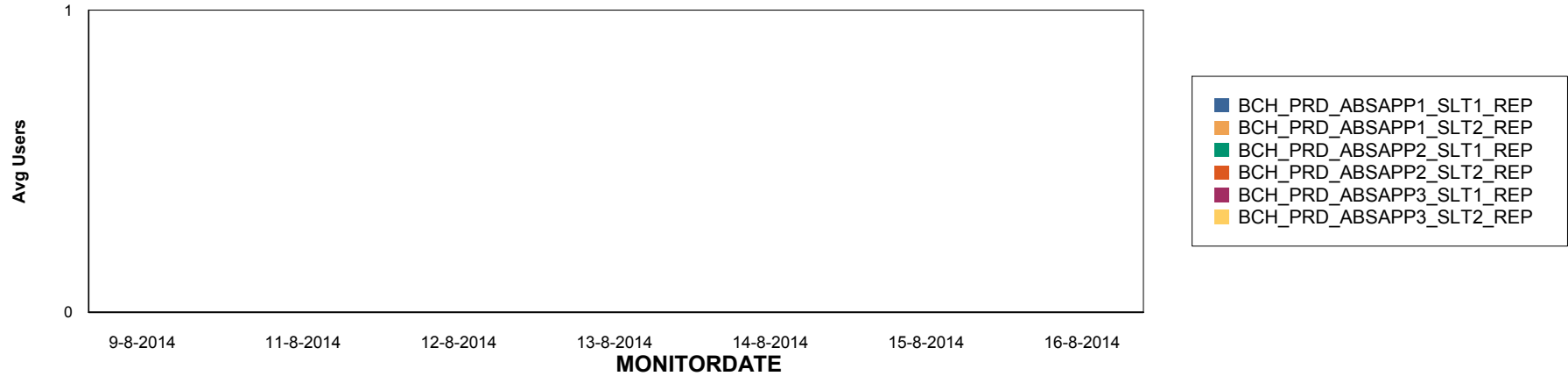
# Weekly SLA Customer Report

Customer BCH Production  
Database ID 28

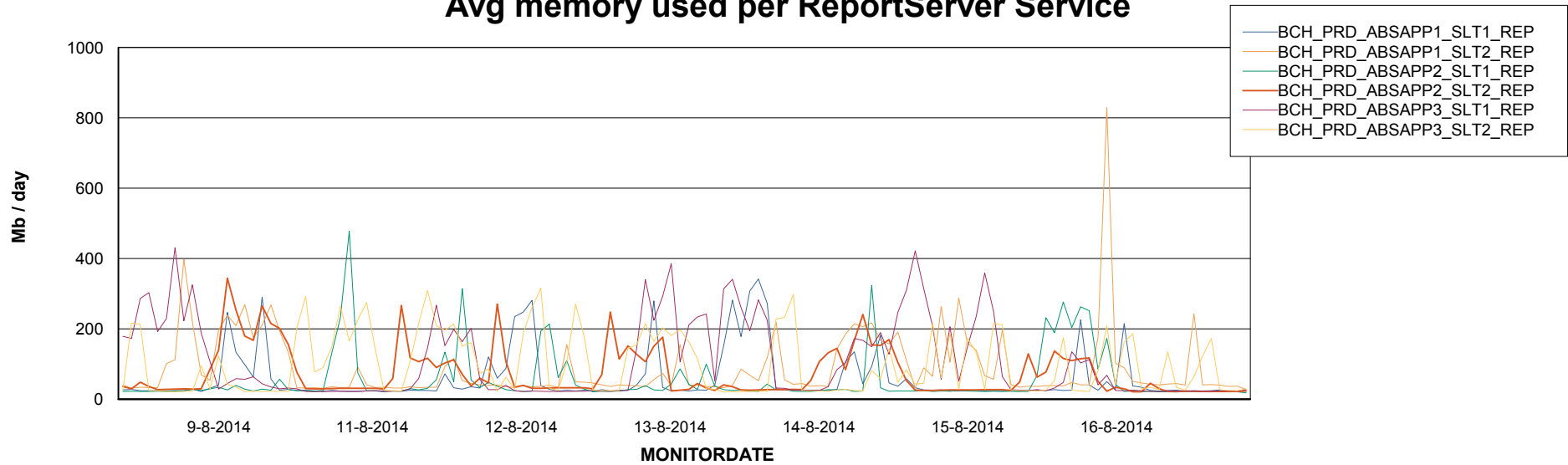


=====  
ABSolute Application ReportServer Services  
=====

## Disaster per ReportServer



## Avg memory used per ReportServer Service



# Weekly SLA Customer Report

Customer BCH Production  
Database ID 28



## Disaster per ABS component

