

Weekly SLA Customer Report

Customer AUJ_Production
 Database ID 41



=====
 HARDDISK USAGE AUJDB_BI
 =====

	Used disk space on / (GB)	Total disk space on / (GB)
16-8-2014	5	6
15-8-2014	5	6
14-8-2014	5	6
13-8-2014	5	6
12-8-2014	5	6
11-8-2014	5	6
10-8-2014	5	6

=====
 HARDDISK USAGE AUJ_PRD_ORACLE1
 =====

	Used disk space on \$1 (GB)	Total disk space on \$1 (GB)	Free disk space on \$1 (GB)
16-8-2014	111	290	67
15-8-2014	111	290	67
14-8-2014	111	290	67
13-8-2014	111	290	67
12-8-2014	111	290	67
11-8-2014	111	290	67
10-8-2014	111	290	67

Weekly SLA Customer Report

Customer AUJ_Production
Database ID 41



HARDDISK USAGE AUJ_PRD_ORACLE2

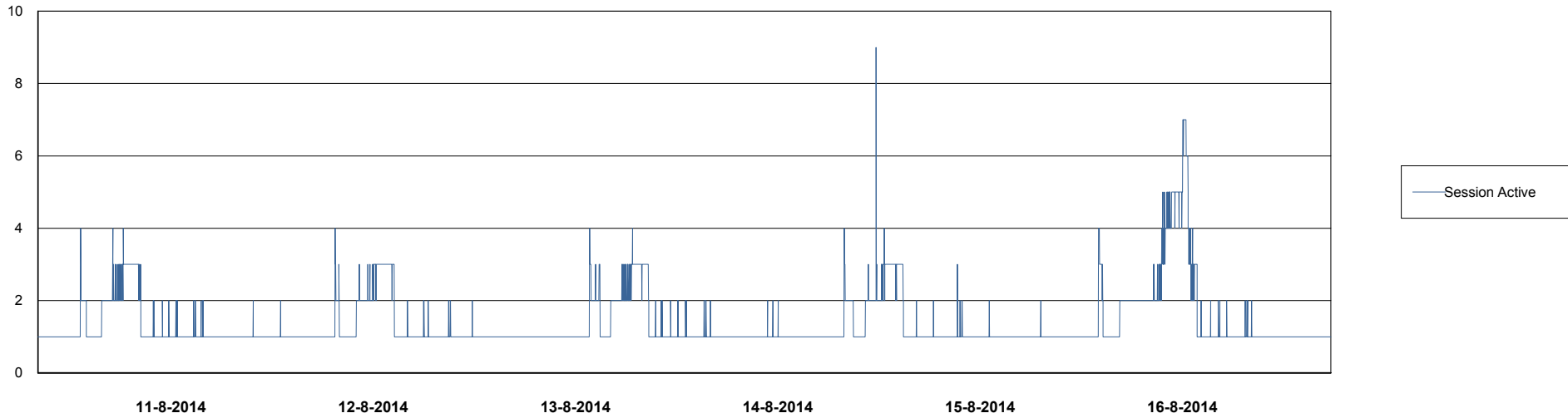
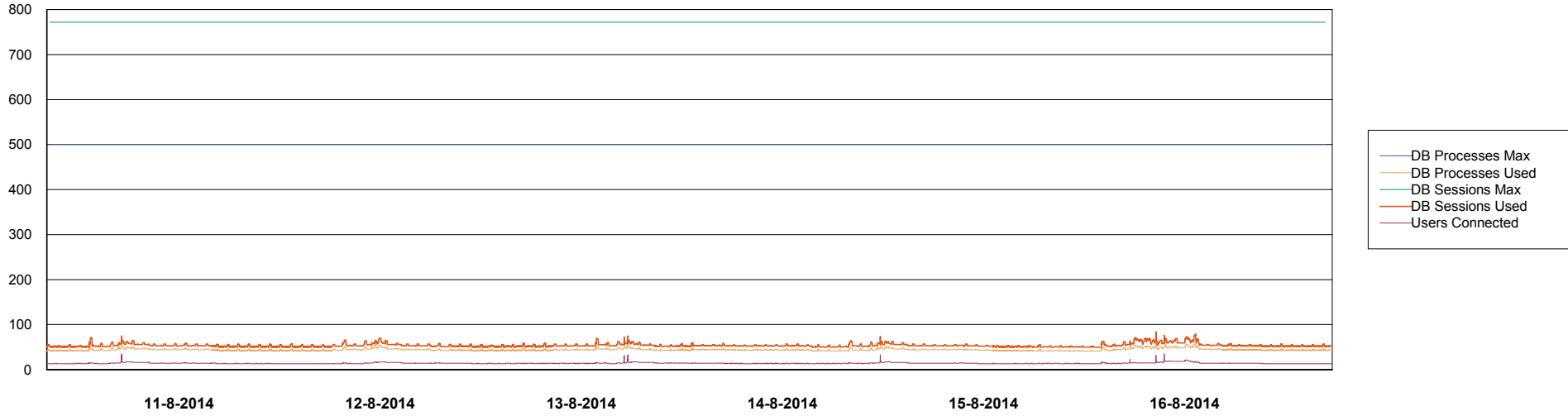
	Used disk space on \$1 (GB)	Total disk space on \$1 (GB)	Free disk space on \$1 (GB)
16-8-2014	6	109	98
15-8-2014	6	109	98
14-8-2014	6	109	98
13-8-2014	6	109	98
12-8-2014	6	109	98
11-8-2014	6	109	98
10-8-2014	6	109	98

Weekly SLA Customer Report

Customer AUJ_Production
Database ID 41



DATABASE PERFORMANCE AUJDB_BI

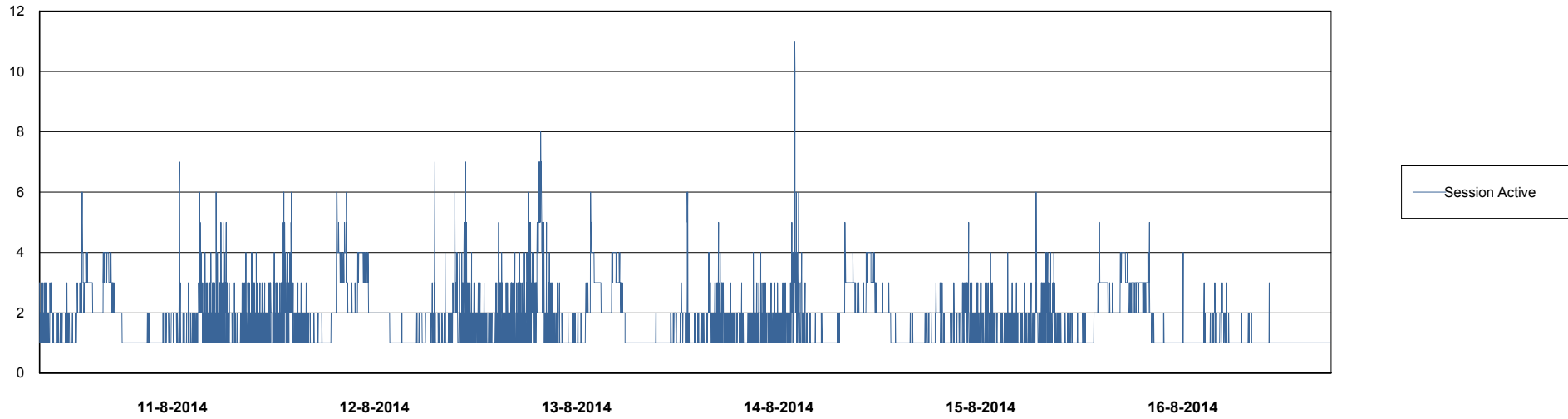
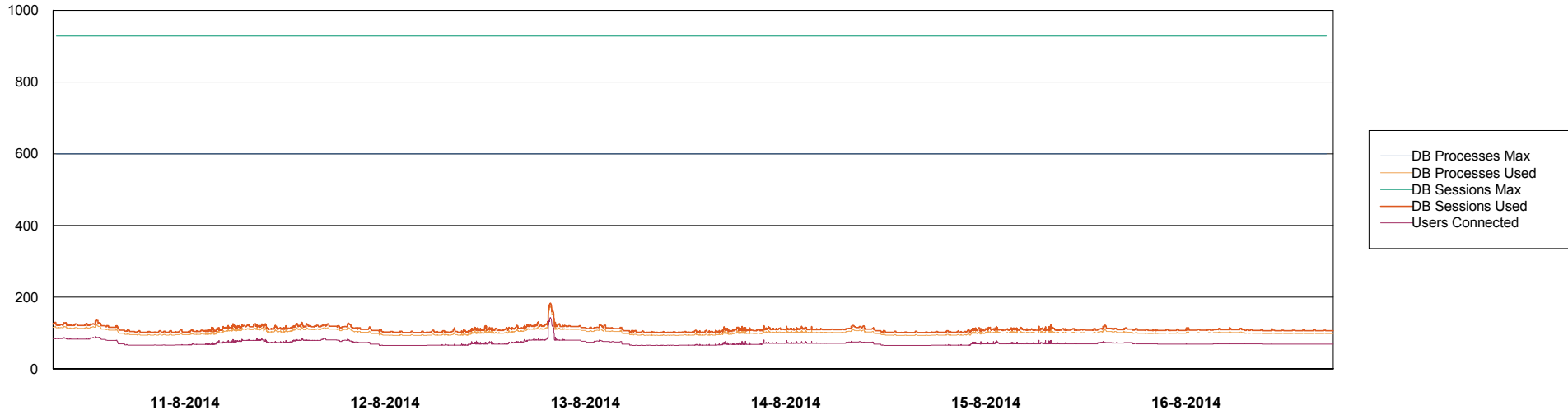


Weekly SLA Customer Report

Customer AUJ_Production
Database ID 41



DATABASE PERFORMANCE AUJDB_Production

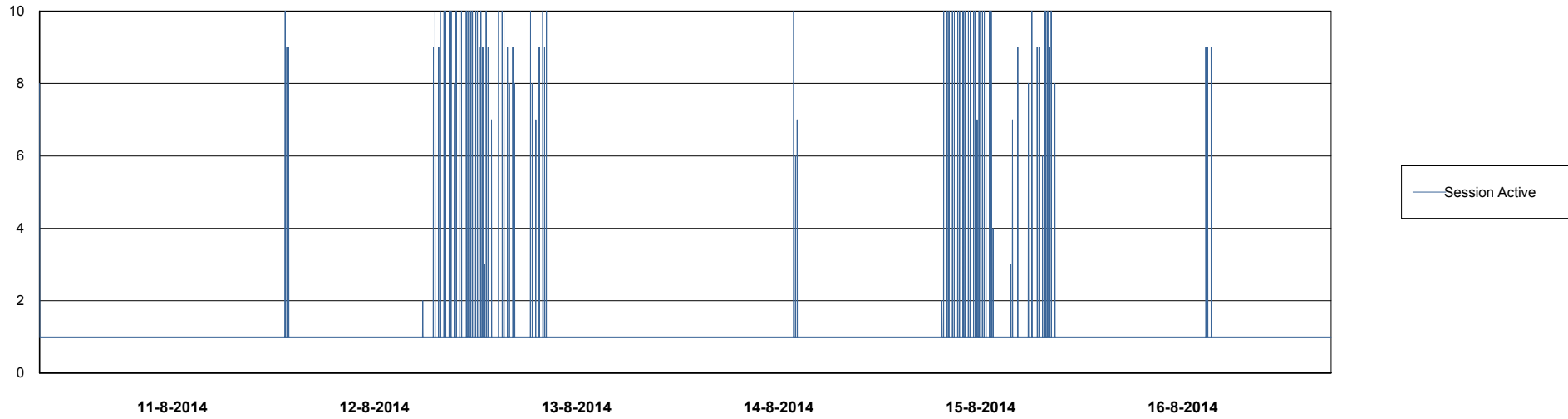
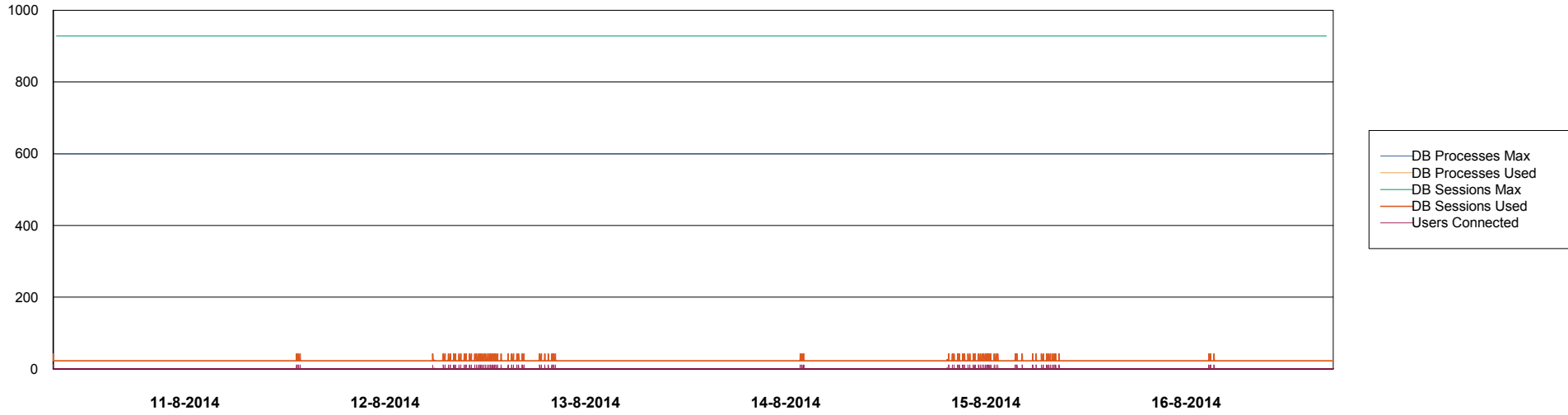


Weekly SLA Customer Report

Customer AUJ_Production
Database ID 41



DATABASE PERFORMANCE AUJDB_Standby

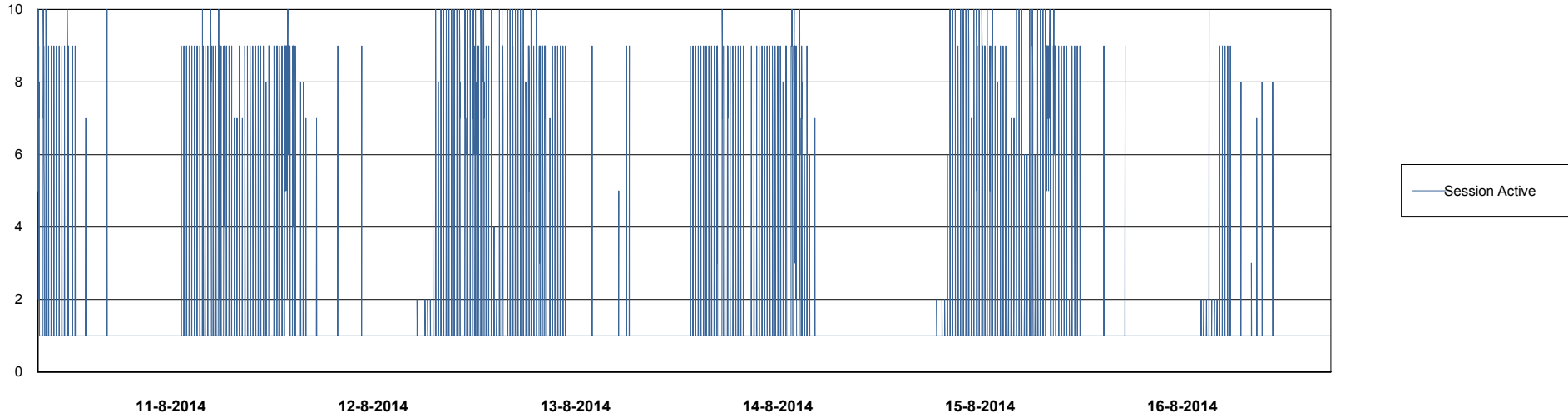
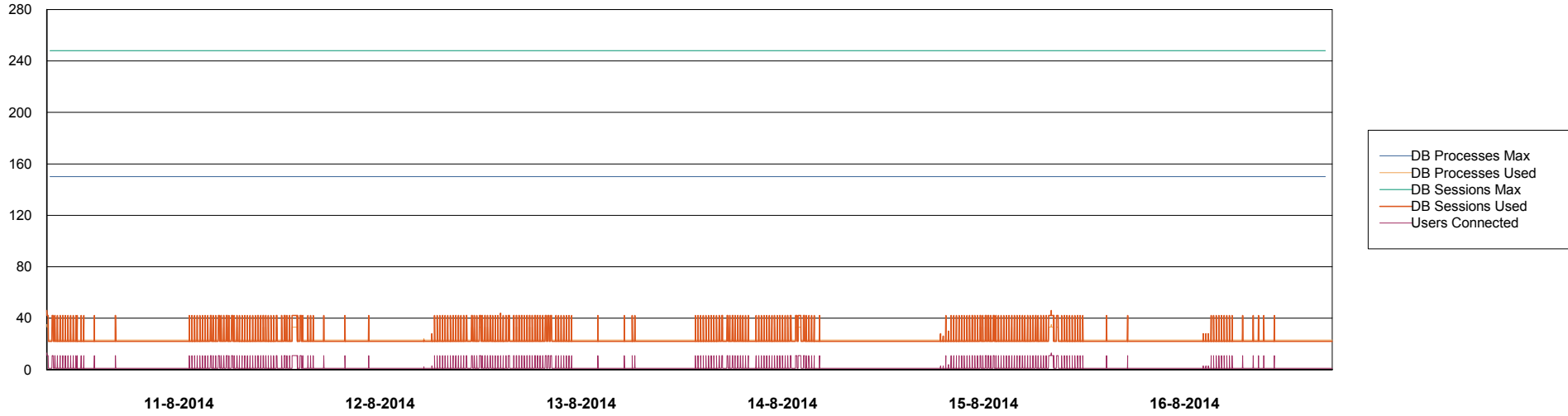


Weekly SLA Customer Report

Customer AUJ_Production
Database ID 41



DATABASE PERFORMANCE AUJDB3_Standby



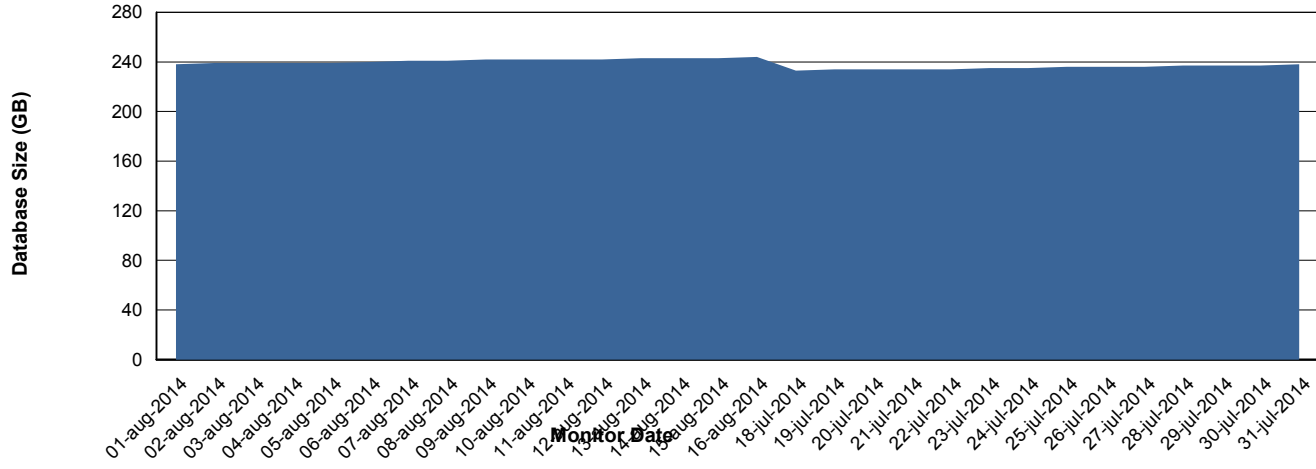
Weekly SLA Customer Report

Customer AUJ_Production
Database ID 41



=====
DATABASE SIZE AUJDB_Production
=====

Database growth over last month



Weekly SLA Customer Report

Customer AUJ_Production
Database ID 41



=====
DATABASE TABLESPACES AUJDB_BI
=====

TOTAL DATABASE SIZE PER TABLESPACE

Date	Tablespace Name	Filesize (Gb)	Usedsize (Gb)	Percentage free
16-8-2014	ABSDATA	93	79	15
	INDX	154	132	14
15-8-2014	ABSDATA	93	79	15
	INDX	154	132	14
14-8-2014	ABSDATA	93	79	15
	INDX	154	132	14
13-8-2014	ABSDATA	93	79	15
	INDX	154	132	14
12-8-2014	ABSDATA	93	79	15
	INDX	154	132	14
11-8-2014	ABSDATA	93	79	15
	INDX	154	132	14
10-8-2014	ABSDATA	93	79	15
	INDX	154	132	14

Weekly SLA Customer Report

Customer AUJ_Production
 Database ID 41



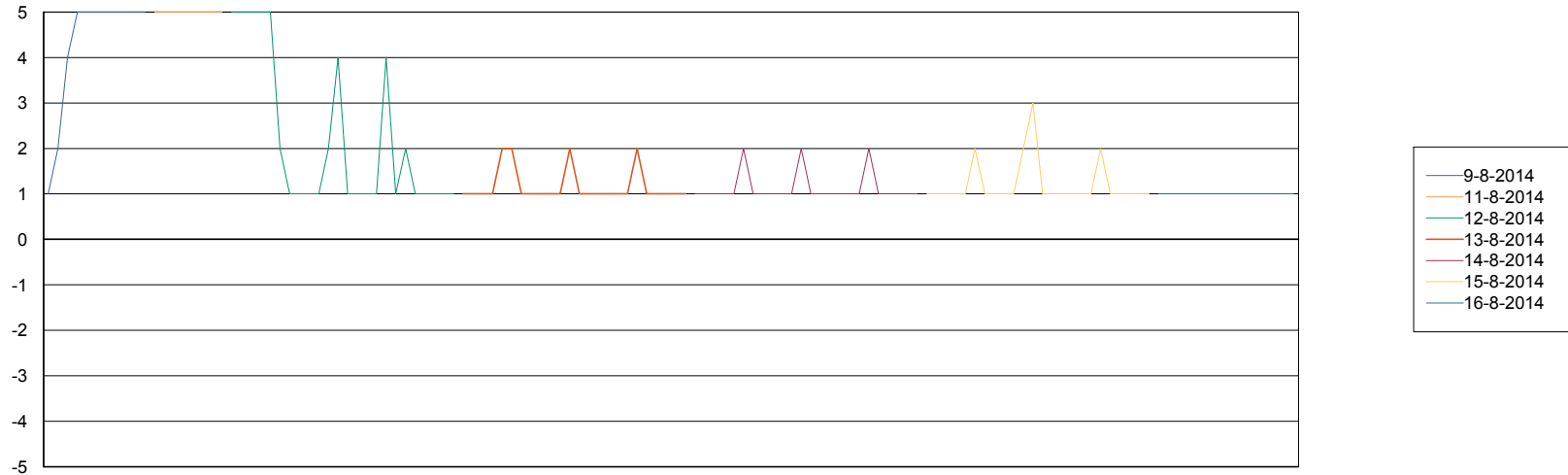
=====
 DATABASE TABLESPACES AUJDB_Production
 =====

TOTAL DATABASE SIZE PER TABLESPACE

Date	Tablespace Name	Filesize (Gb)	Usedsize (Gb)	Percentage free
16-8-2014	ABSDATA	129	106	18
	INDX	157	136	13
15-8-2014	ABSDATA	129	106	18
	INDX	157	136	13
14-8-2014	ABSDATA	129	106	18
	INDX	157	135	14
13-8-2014	ABSDATA	129	106	18
	INDX	157	135	14
12-8-2014	ABSDATA	129	106	18
	INDX	157	135	14
11-8-2014	ABSDATA	129	106	18
	INDX	157	135	14
10-8-2014	ABSDATA	129	106	18
	INDX	157	134	15

=====
 STANDBY DATABASE HEALTH AUJ_Production
 =====

Recovery lag for last 7 days



Weekly SLA Customer Report

Customer AUJ_Production
Database ID 41

