

Weekly SLA Customer Report

Customer NIX_Production
Database ID 51



=====
HARDDISK USAGE NIX_PRD_ABSAPP1
=====

	Total disk space on C (GB)	Free disk space on C (GB)
9-8-2014	136	88
8-8-2014	136	88
7-8-2014	136	88
6-8-2014	136	88
5-8-2014	136	88
4-8-2014	136	88
3-8-2014	136	88

=====
HARDDISK USAGE NIX_PRD_ABSWEB1
=====

	Total disk space on C (GB)	Free disk space on C (GB)
9-8-2014	930	729
8-8-2014	930	729
7-8-2014	930	729
6-8-2014	930	729
5-8-2014	930	729
4-8-2014	930	729
3-8-2014	930	729

Weekly SLA Customer Report

Customer NIX_Production
 Database ID 51



=====
 HARDDISK USAGE NIX_PRD_ORACLE_B11
 =====

	Total disk space on C (GB)	Free disk space on C (GB)	Total disk space on D (GB)	Free disk space on D (GB)	Total disk space on E (GB)	Free disk space on E (GB)
9-8-2014	40	7	279	181	236	171
8-8-2014	40	7	279	181	236	171
7-8-2014	40	7	279	178	236	167
6-8-2014	40	7	279	181	236	171
5-8-2014	40	7	279	179	236	169
4-8-2014	40	7	279	175	236	171
3-8-2014	40	7	279	173	236	162

=====
 HARDDISK USAGE NIX_PRD_ORCDB1
 =====

	Total disk space on C (GB)	Free disk space on C (GB)	Total disk space on D (GB)	Free disk space on D (GB)	Total disk space on E (GB)	Free disk space on E (GB)
9-8-2014	136	21	136	36	136	101
8-8-2014	136	21	136	36	136	102
7-8-2014	136	21	136	36	136	103
6-8-2014	136	21	136	36	136	103
5-8-2014	136	21	136	36	136	103
4-8-2014	136	21	136	36	136	103
3-8-2014	136	21	136	36	136	103

Weekly SLA Customer Report

Customer NIX_Production
 Database ID 51



=====
 HARDDISK USAGE NIX_PRD_ORCDB2
 =====

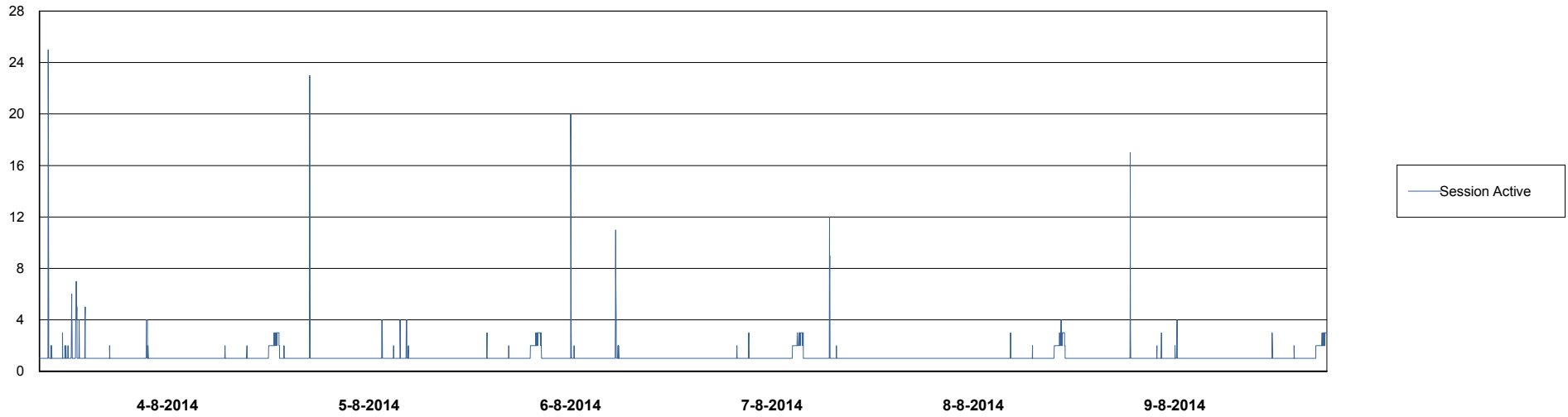
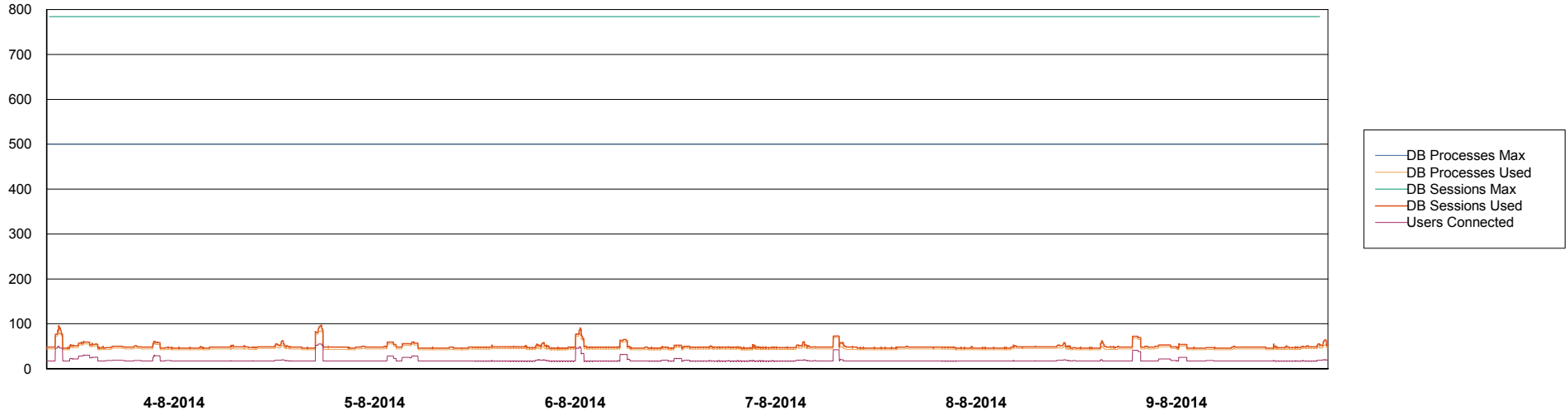
	Total disk space on C (GB)	Free disk space on C (GB)	Total disk space on D (GB)	Free disk space on D (GB)	Total disk space on E (GB)	Free disk space on E (GB)
9-8-2014	279	49	279	49	279	144
8-8-2014	279	49	279	49	279	125
7-8-2014	279	49	279	49	279	110
6-8-2014	279	49	279	49	279	75
5-8-2014	279	49	279	49	279	45
4-8-2014	279	49	279	49	279	63
3-8-2014	279	49	279	49	279	90

Weekly SLA Customer Report

Customer NIX_Production
Database ID 51



DATABASE PERFORMANCE NIXDB_BI

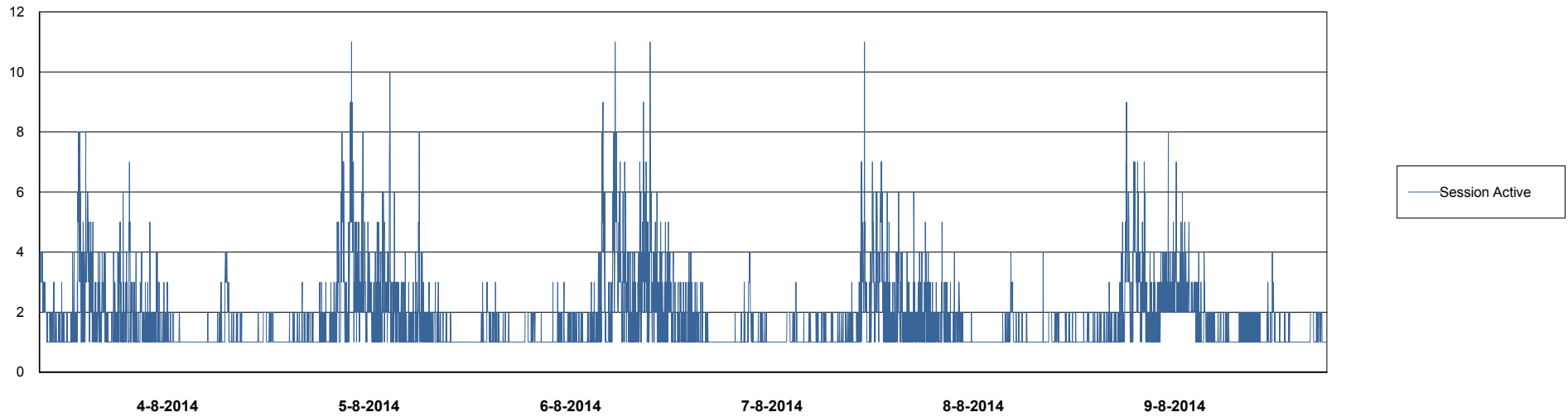
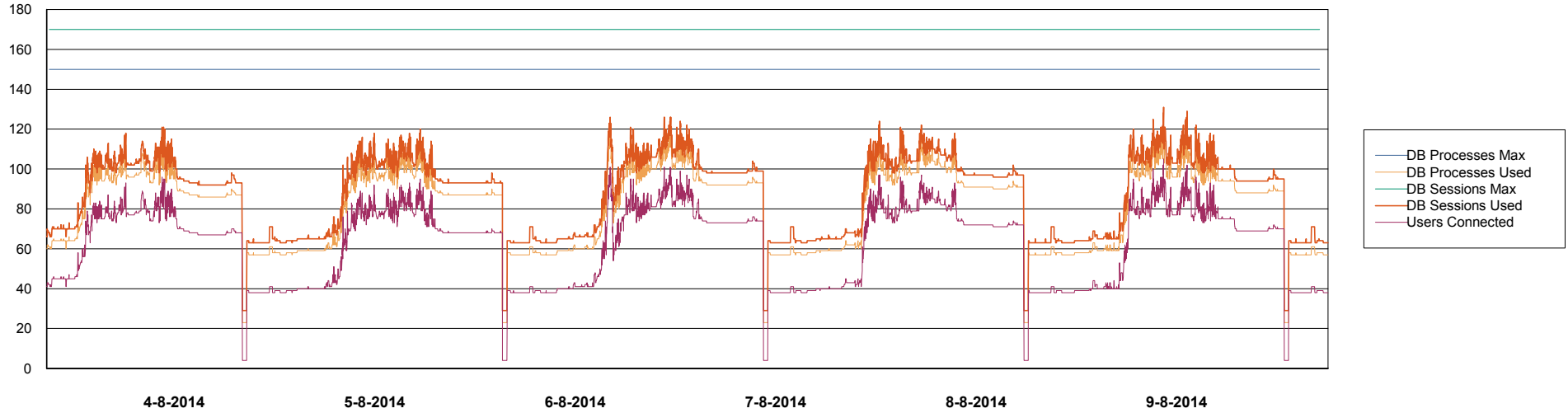


Weekly SLA Customer Report

Customer NIX_Production
Database ID 51



=====
DATABASE PERFORMANCE NIXDB_Production
=====

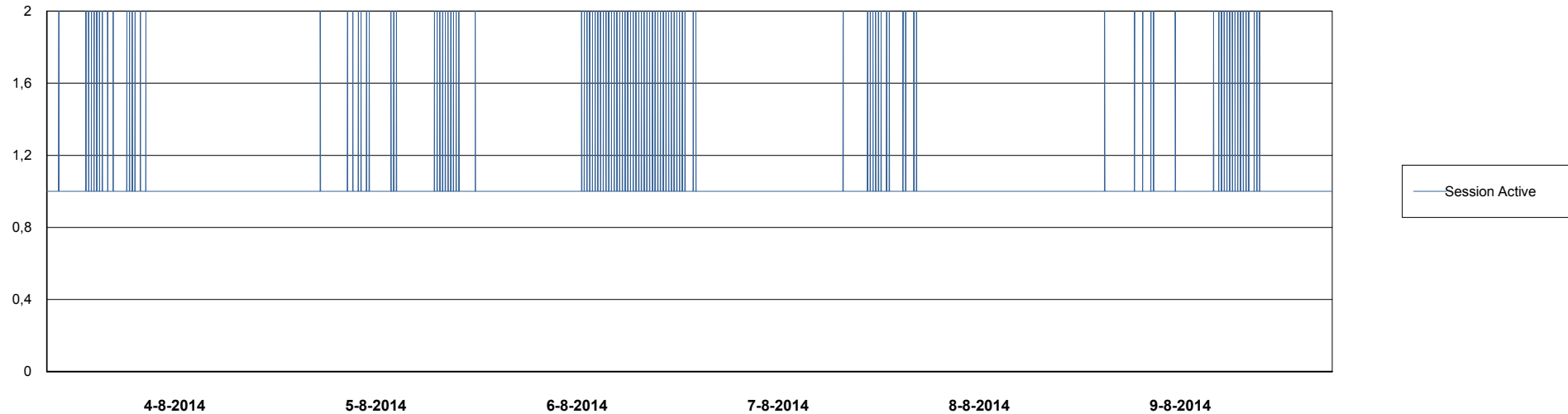
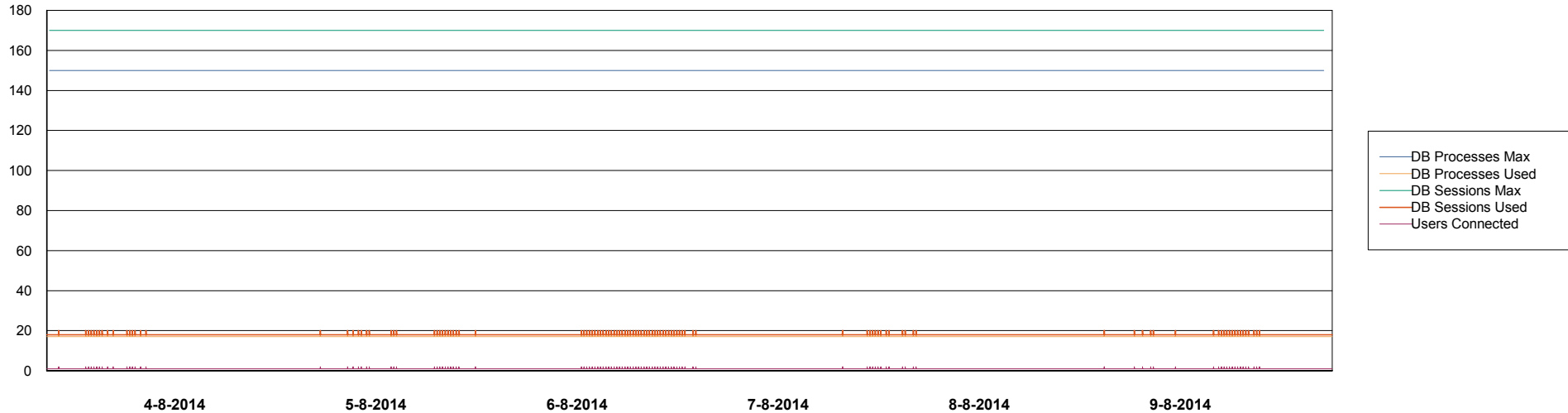


Weekly SLA Customer Report

Customer NIX_Production
Database ID 51



DATABASE PERFORMANCE NIXDB_Standby



Weekly SLA Customer Report

Customer NIX_Production
Database ID 51



=====
DATABASE TABLESPACES NIXDB_BI
=====

TOTAL DATABASE SIZE PER TABLESPACE

Date	Tablespace Name	Filesize (Gb)	Usedsize (Gb)	Percentage free
9-8-2014	ABSDATA	20	16	20
	INDX	40	26	35
8-8-2014	ABSDATA	20	16	20
	INDX	40	26	35
7-8-2014	ABSDATA	20	16	20
	INDX	40	25	38
6-8-2014	ABSDATA	20	16	20
	INDX	40	25	38
5-8-2014	ABSDATA	20	16	20
	INDX	40	25	38
4-8-2014	ABSDATA	20	16	20
	INDX	40	25	38
3-8-2014	ABSDATA	20	16	20
	INDX	40	25	38

Weekly SLA Customer Report

Customer NIX_Production
 Database ID 51



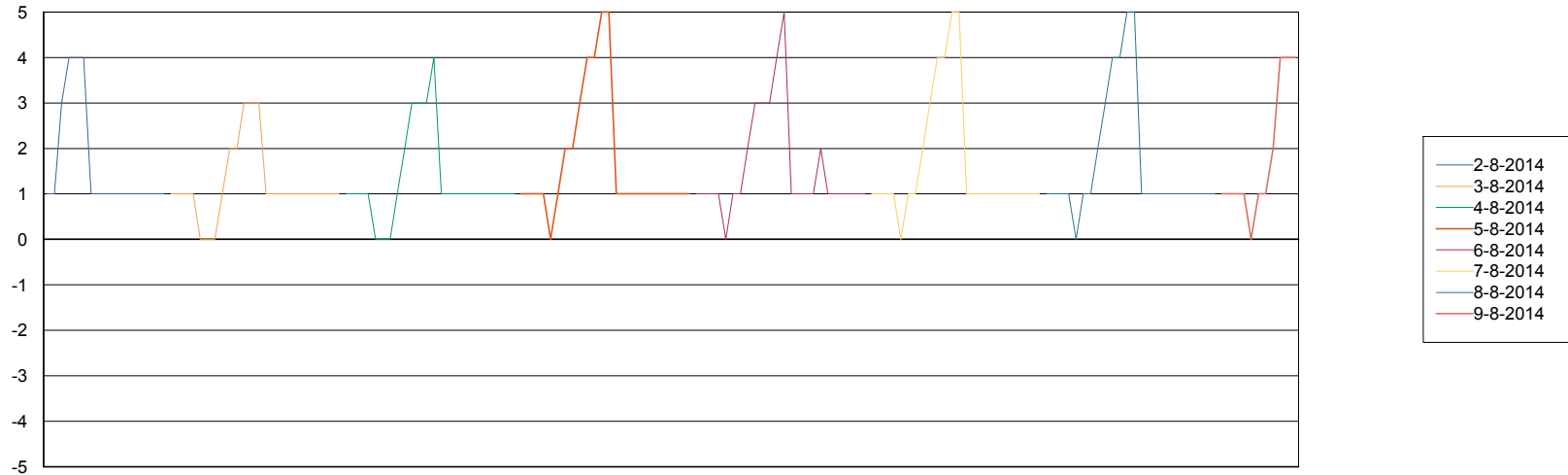
=====
 DATABASE TABLESPACES NIXDB_Production
 =====

TOTAL DATABASE SIZE PER TABLESPACE

Date	Tablespace Name	Filesize (Gb)	Usedsize (Gb)	Percentage free
9-8-2014	ABSDATA	40	27	33
	INDX	97	72	26
8-8-2014	ABSDATA	40	27	33
	INDX	97	72	26
7-8-2014	ABSDATA	40	27	33
	INDX	97	72	26
6-8-2014	ABSDATA	40	27	33
	INDX	97	71	27
5-8-2014	ABSDATA	40	27	33
	INDX	97	71	27
4-8-2014	ABSDATA	40	27	33
	INDX	97	71	27
3-8-2014	ABSDATA	40	27	33
	INDX	97	71	27

=====
 STANDBY DATABASE HEALTH NIX_Production
 =====

Recovery lag for last 7 days



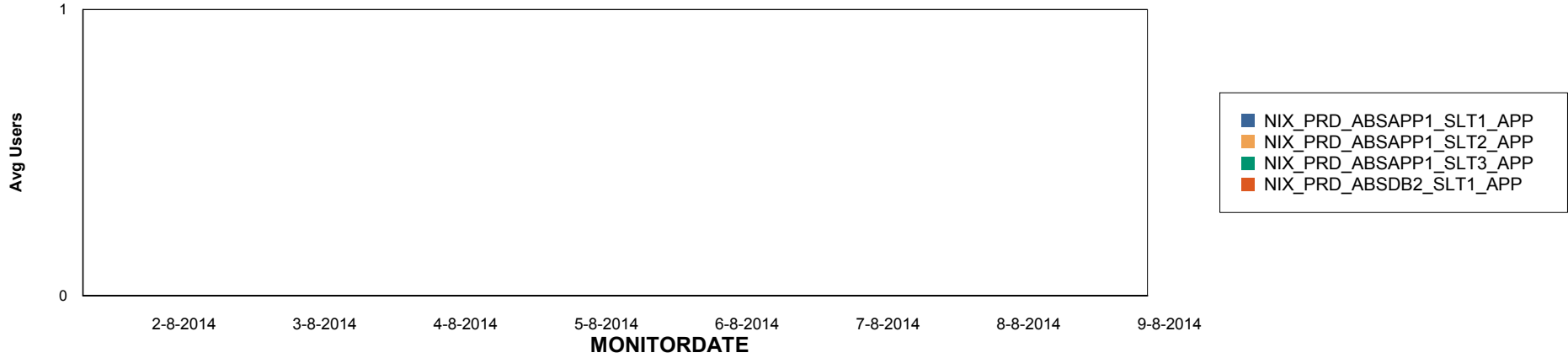
Weekly SLA Customer Report

Customer NIX_Production
Database ID 51

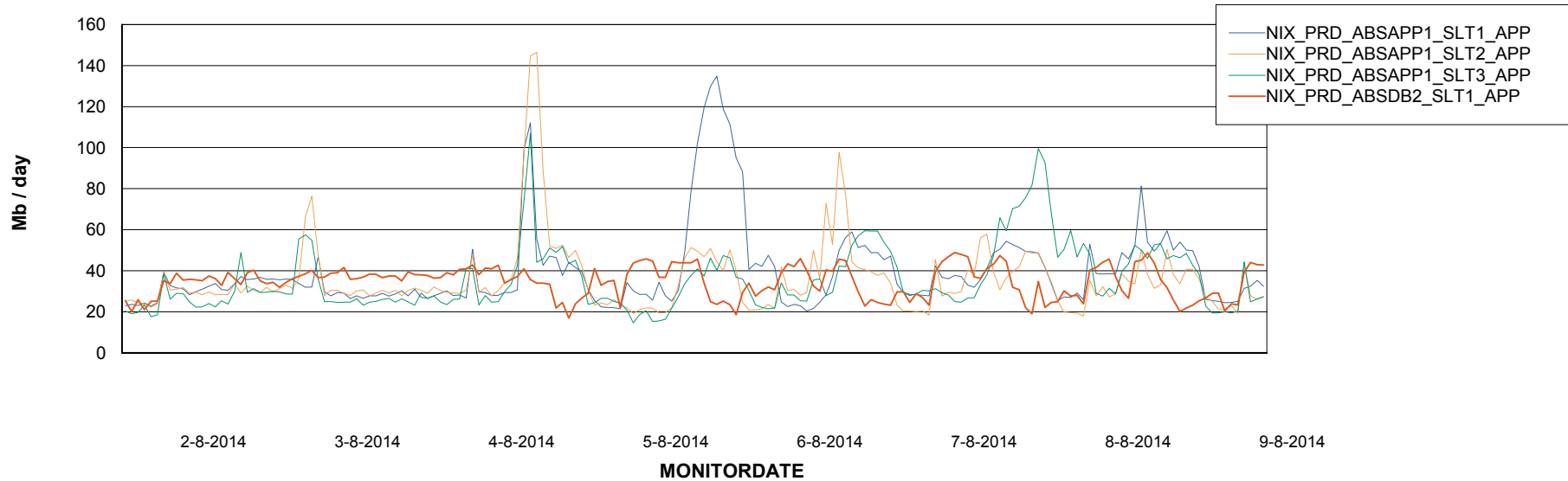


ABSolute Application Server Services

Disaster per ABS Server



Avg memory used per ABS Server Service



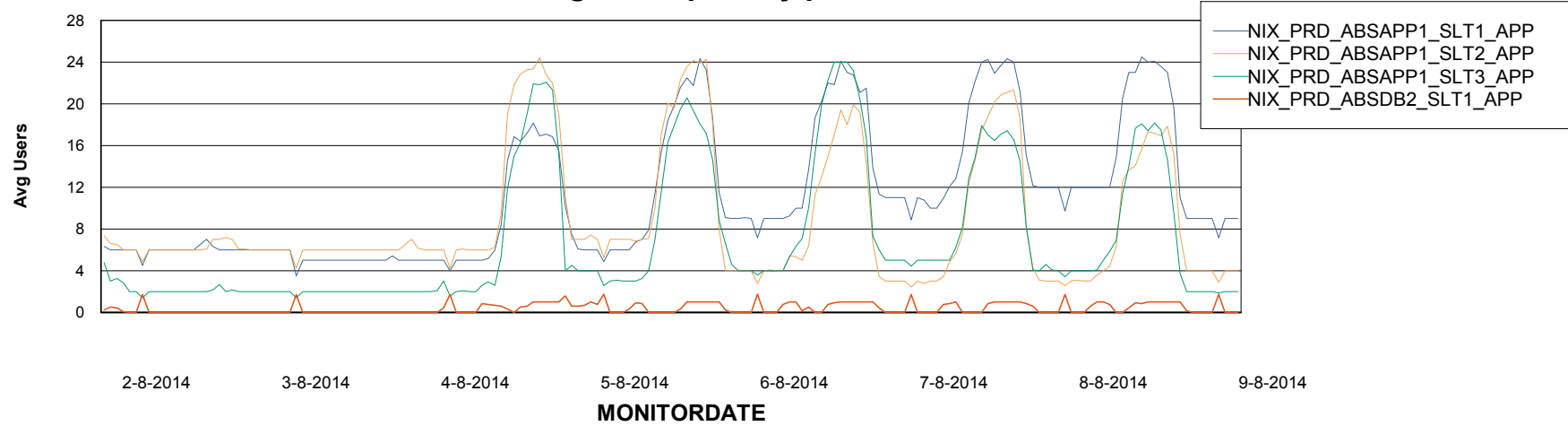
Weekly SLA Customer Report

Customer NIX_Production
Database ID 51



=====
ABSolute Application Server Services
=====

Avg users per day per ABS server



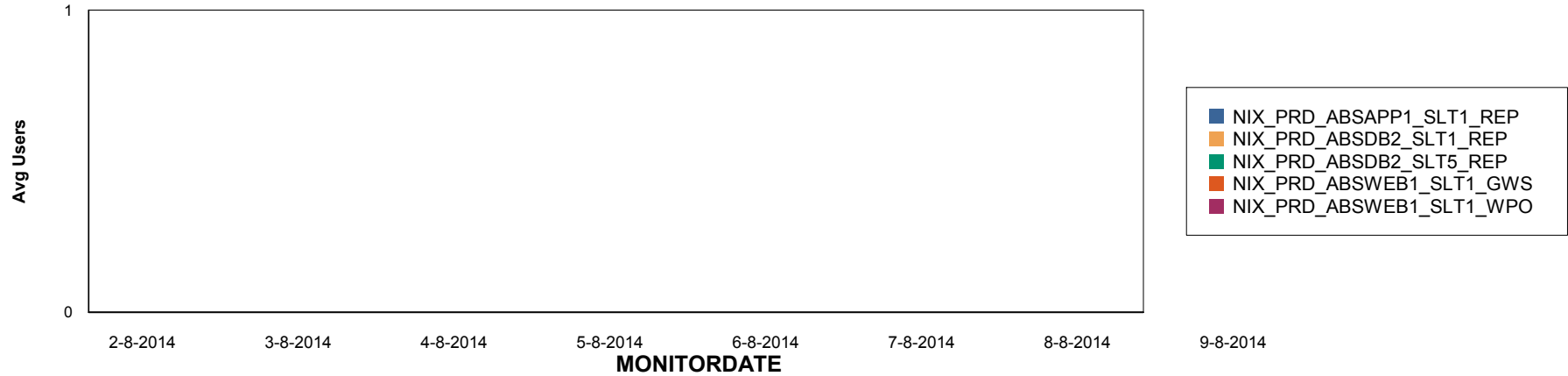
Weekly SLA Customer Report

Customer NIX_Production
Database ID 51

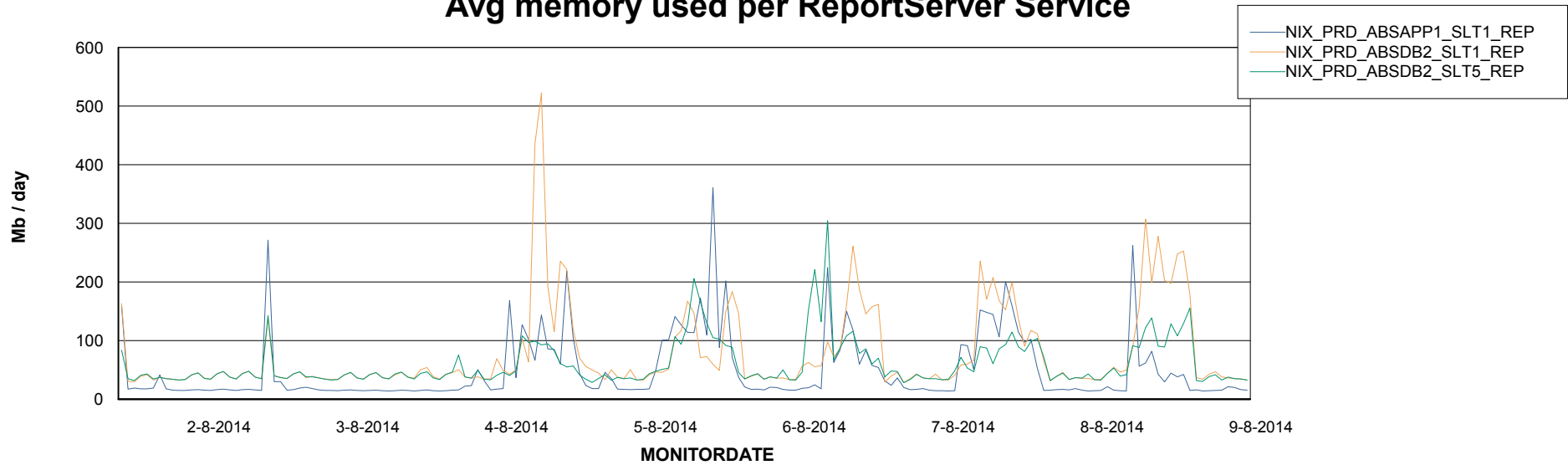


=====
ABSolute Application ReportServer Services
=====

Disaster per ReportServer



Avg memory used per ReportServer Service



Weekly SLA Customer Report

Customer NIX_Production
Database ID 51



Disaster per ABS component

