

Weekly SLA Customer Report

Customer FIS_Production
Database ID 46



=====
HARDDISK USAGE FIS_PRD_ORACLE1
=====

	Total disk space on C (GB)	Free disk space on C (GB)
9-8-2014	279	241
8-8-2014	279	241
7-8-2014	279	241
6-8-2014	279	241
5-8-2014	279	241
4-8-2014	279	241
3-8-2014	279	241

=====
HARDDISK USAGE FIS_PRD_ORACLE2
=====

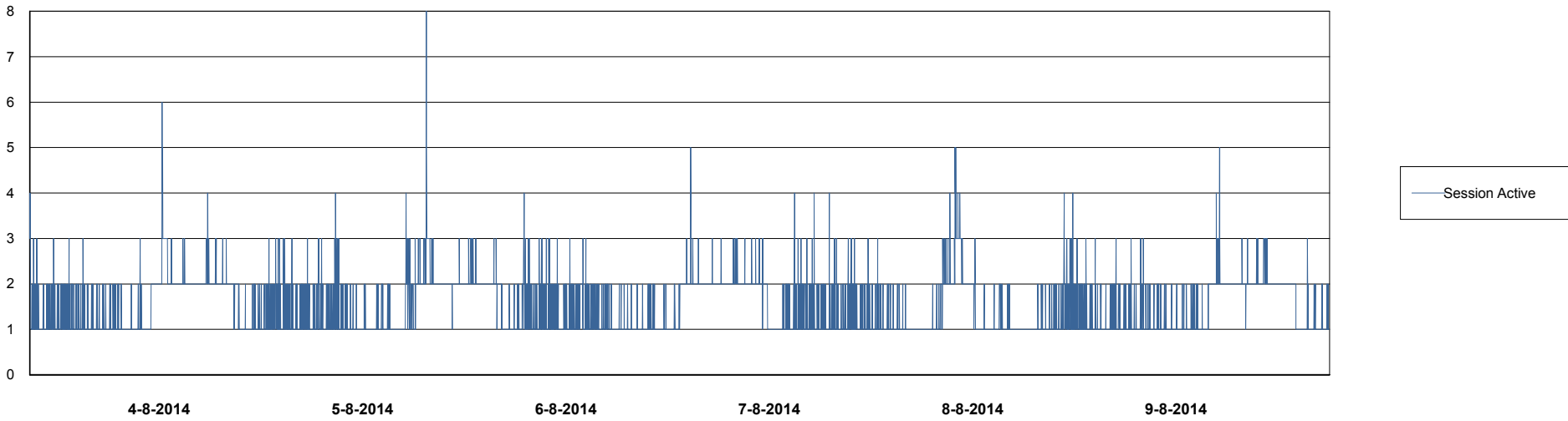
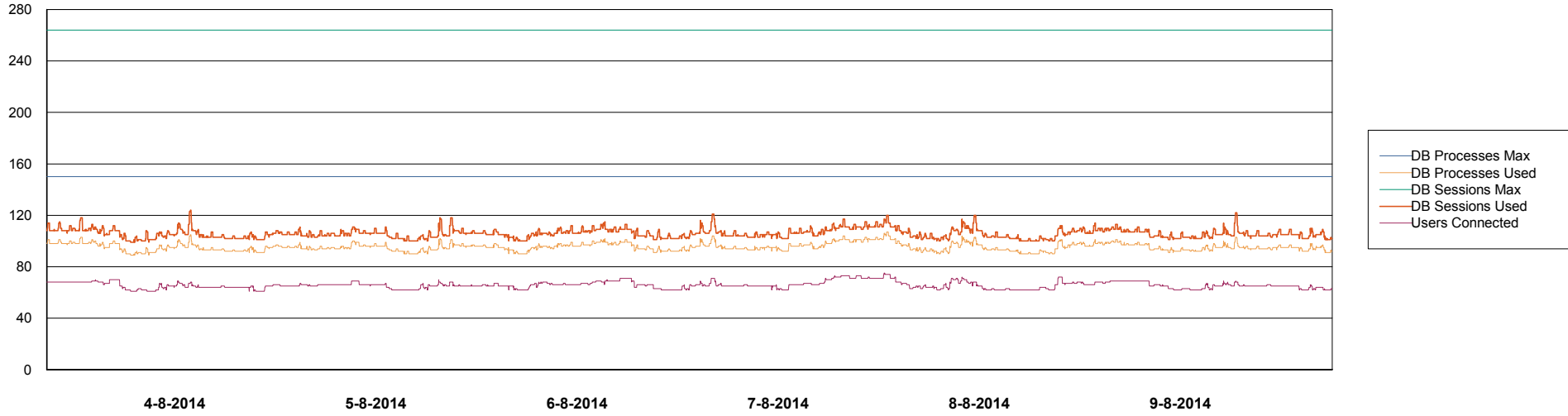
	Total disk space on C (GB)	Free disk space on C (GB)
9-8-2014	279	229
8-8-2014	279	229
7-8-2014	279	229
6-8-2014	279	229
5-8-2014	279	229
4-8-2014	279	229
3-8-2014	279	229

Weekly SLA Customer Report

Customer FIS_Production
Database ID 46



DATABASE PERFORMANCE FISDB_Production

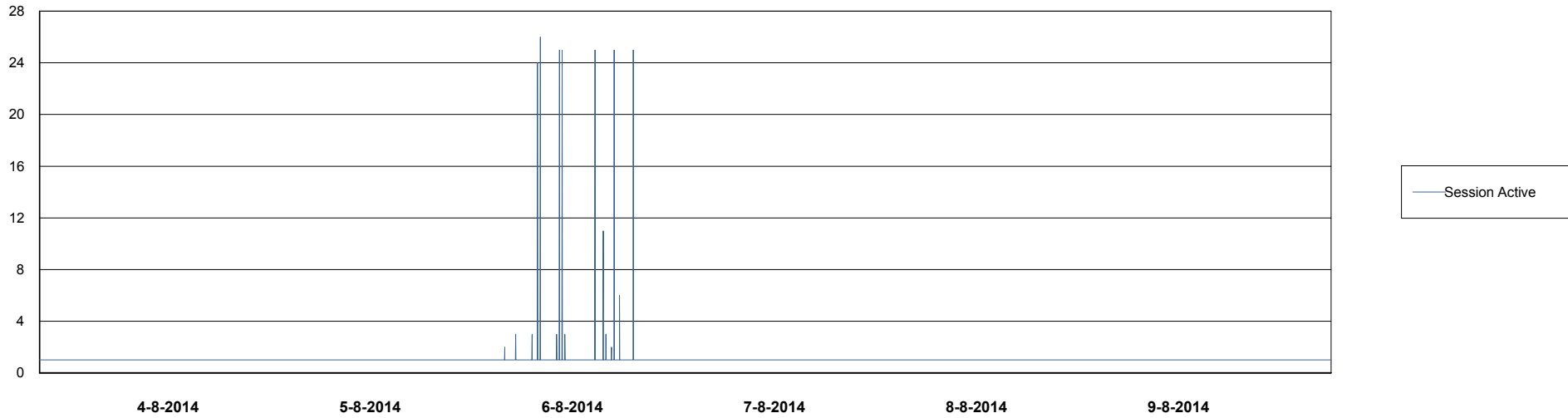
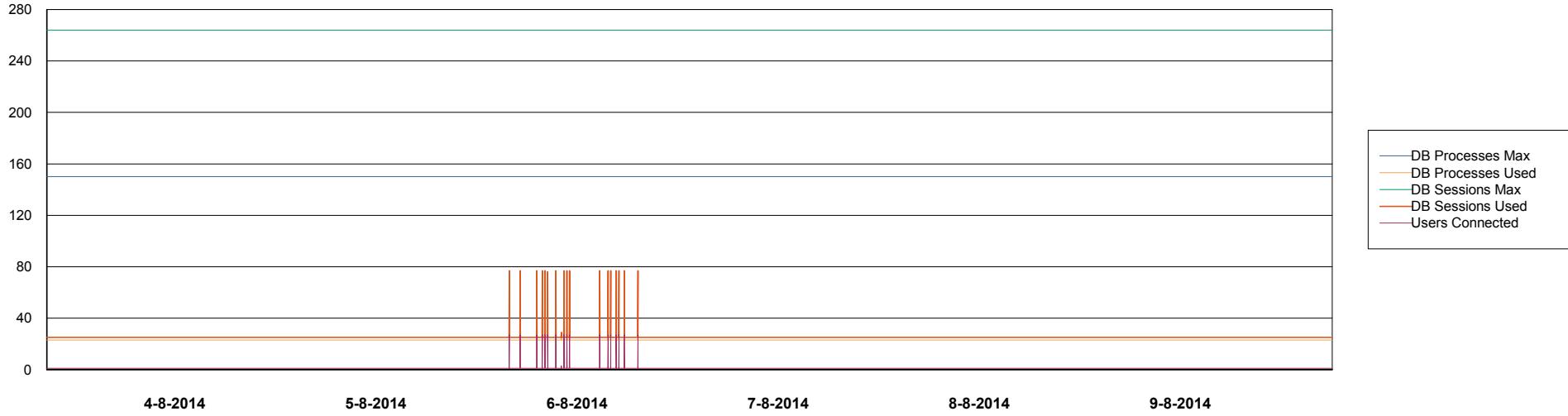


Weekly SLA Customer Report

Customer FIS_Production
Database ID 46



DATABASE PERFORMANCE FISDB_Standby



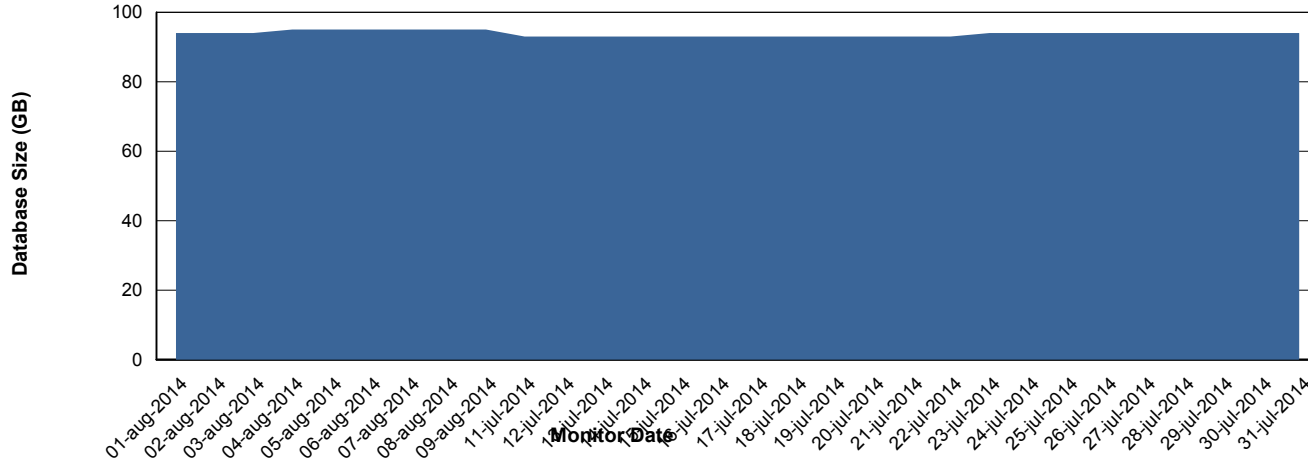
Weekly SLA Customer Report

Customer FIS_Production
 Database ID 46



=====
 DATABASE SIZE FISDB_Production
 =====

Database growth over last month



=====
 DATABASE TABLESPACES FISDB_Production
 =====

TOTAL DATABASE SIZE PER TABLESPACE

Date	Tablespace Name	Filesize (Gb)	Usedsize (Gb)	Percentage free
9-8-2014	ABSDATA	51	40	22
	INDX	61	50	18
8-8-2014	ABSDATA	51	40	22
	INDX	61	50	18
7-8-2014	ABSDATA	51	40	22
	INDX	61	50	18
6-8-2014	ABSDATA	51	40	22
	INDX	61	50	18
5-8-2014	ABSDATA	51	40	22
	INDX	61	50	18
4-8-2014	ABSDATA	51	40	22
	INDX	61	50	18
3-8-2014	ABSDATA	51	40	22
	INDX	61	50	18

Weekly SLA Customer Report

Customer FIS_Production
Database ID 46



=====
STANDBY DATABASE HEALTH FIS_Production
=====

Recovery lag for last 7 days

